

**MISSION DATA CARD**

OPORD		Callsign	Mission	Date/Time		
3668/2025		Monster 1	Training	172000FEB25		
Task	CAS				Freq	
AO	ESR04				132.15	
Departure			Recovery			
VFR Departure			VFR Approach			
#	Callsign	Pilot	IFF	TCN	LSR	NET
-1	Monster 1-1	Toolface	1411	1Y	1611	21/01
-2	Monster 1-2	addiks	1412	64Y	1612	21/02
-3	Monster 1-3	Lenzi	1413	64X	1613	21/03

**LOADOUT**

A/A	A9M	GUN	100% CM
A/G	7M282L, 2xA65D, 2xM82	CHF	360
POD	TGP, A184	FLR	120
TKS		FUEL	75%

**TOLD**

	Takeoff	Target	Joker	Bingo	Land
FUEL	8315				

**AIRBASES**

	Name	TCN	ATIS	GND	TWR	RWY	Elev	ILS
Dep	Rovaniemi	14X	282.8	282.5	250.55	21	643	111.7
Arr	Rovaniemi	14X	282.8	282.5	250.55	21	643	111.7

**FLIGHTPLAN**

#	Name	Navaid/Coords/DME	ALT	TOT
1	IBSAN	N66 42.500 E025 01.083		
2	NAFFI	N67 04.630 E023 11.660		
3	ENOXI	N66 54.960 E021 38.780		
4	ESR04Entry	N66 03.805 E021 37.096		
5	T.ESR04.Cros sroads	N65 50.819 E021 43.955		
6	IMARI	N66 28.406 E025 31.291		
7	SIERRA	N66 25.711 E025 46.610		
8	VIKA	N66 37.474 E026 13.557		
9	PERUN	N66 44.135 E026 01.630		

**COMMS**

Radio	Usage
1	132.15
2	2-4-16-2-4
3	35.50

## NOTES

JTAC NASTY6  
Contact Point NAFFI

## OTHER FLIGHTS

Callsign	Mission	Airframe	Freq	TCN	Grpld	Laser
Nazgul 7	Training	4x F-15E	262.45	1/64	2	116X
AO		Task	FAM-Flight			
Raptor 1	Training	4x F-16C	134.0	1/64		162X
AO	ESR01	Task	SA2/3 Sead / DEAD Training			
Edelweiss 1	Training	4x F-16C	134.75	1/64		171X
AO	South Rovaniemi	Task	BJT			
Nasty 6	JTAC	1x Ground	35.5	1/64		160X
AO		Task	JTAC ESR04			
Nazgul 6	Training	4x F-15E	262.45	1/64		156X
AO	ENR02	Task	WVR Training			
Rattler 2	Training	4x AH-64D	133.5	1/64		125X
AO	R92 A, B, C	Task				

## RADIO CHANNELS

#	Freq	Name
1		Flight/Squadron specific
2	282.8	Rovaniemi ATIS
3	282.5	Rovaniemi Ground
4	250.55	Rovaniemi Tower
5	320.7	Bodo ATIS
6	250.75	Bodo Tower
7	235.45	Kallax ATIS
8	250.3	Kallax Tower
9	265.0	Texaco-1   KC-135   Medium / Slow   71Y
10	319.8	Arco-1   KC-135   High / Fast   22Y
11	360.8	Shell-1   KC-135 MPRS   High / Fast   41Y
12	304.0	CVN-71 Rough Rider (RRR)   71X
13	303.0	LHA-1 Tarawa (TWA)   79X
14	247.8	S-3B Mauler-1 (MAU)  64Y
15	347.8	Loki (E-2D)
16	348.7	Heimdall (E-3A)
17	242.17	ESR02 - CAS Range Operator
18	34.7	ESR02 - JTAC Odin
19	270.5	Blue
20	270.75	Red

**RAMROD**

0	1	2	3	4	5	6	7	8	9
C	U	R	T	S	E	Y	I	N	G

**KTC 1400 C**

	0	1	2	3	4	5	6	7	8	9
A	VKMG	WTE	DXS	CJ	OI	QBL	FU	PA	HN	YR
B	STHE	RLN	MYP	QC	JV	WAD	FK	OU	BX	IG
C	WVSP	ECT	BIQ	YG	NL	MRK	UX	JD	AO	HF
D	JFMO	CWP	KXI	TH	BY	GQV	EL	NR	UA	DS
E	QYMV	JAG	EHT	XD	WS	KNO	PC	IB	UL	FR
F	KXGE	FIJ	RON	UH	VW	TQY	BD	AC	ML	PS
G	OCEI	NGV	HQM	DB	XY	TPW	LK	SF	UA	JR
H	AEGL	BXU	CHY	IM	WR	ODJ	FP	QT	NV	KS
I	JQUL	OFD	AIG	XW	EH	VCB	RK	SY	MT	NP
J	MULV	HIQ	RGS	DC	PW	EAN	FB	TO	KY	XJ
K	MQBP	GUN	YIH	AV	CX	EOW	TS	JR	DK	FL
L	CUVT	HDP	ONK	QE	YM	GAF	LS	XW	BR	IJ
M	JRYQ	VIO	KXD	EA	CW	UMS	NH	BT	FL	GP
N	VHBY	PRW	IUS	DN	MT	JQG	EC	OA	LX	FK
O	YLUS	IBJ	XPQ	KN	CO	WVG	DH	FE	TA	RM
P	VXAW	GEQ	RDU	TO	MY	HNI	BJ	KF	PL	SC
Q	DOSQ	PHU	CXW	NG	AF	LIK	TB	ME	RJ	VY
R	BUHY	TFN	SLX	IV	GW	RAJ	MC	OK	QE	PD
S	JVHW	KXE	PUR	OM	TY	CGF	IL	DA	QN	BS
T	UROL	BTP	ACH	SM	VQ	EYD	WX	KJ	NG	FI
U	TVSH	DAO	UCR	KB	GY	JQL	PF	MN	EW	XI
V	JYSA	LUR	BQE	MF	XD	CTK	WV	NI	PG	OH
W	VKSO	EBA	LQR	XG	HN	JCP	WF	TY	MU	DI
X	CXRI	QAU	EOP	TJ	BY	WKF	VS	DG	MN	HL
Y	EWDV	OIS	KJT	PB	NR	MUG	QH	AL	CY	XF

**NAVAIDS**

Id	Name	Channel	Position	Elevation
BOO	Bodo	45	N67 15.838 E014 20.046	43
BNK	Banak	47	N70 03.937 E024 58.181	17
OYA	Andoya	28	N69 17.175 E016 08.658	19

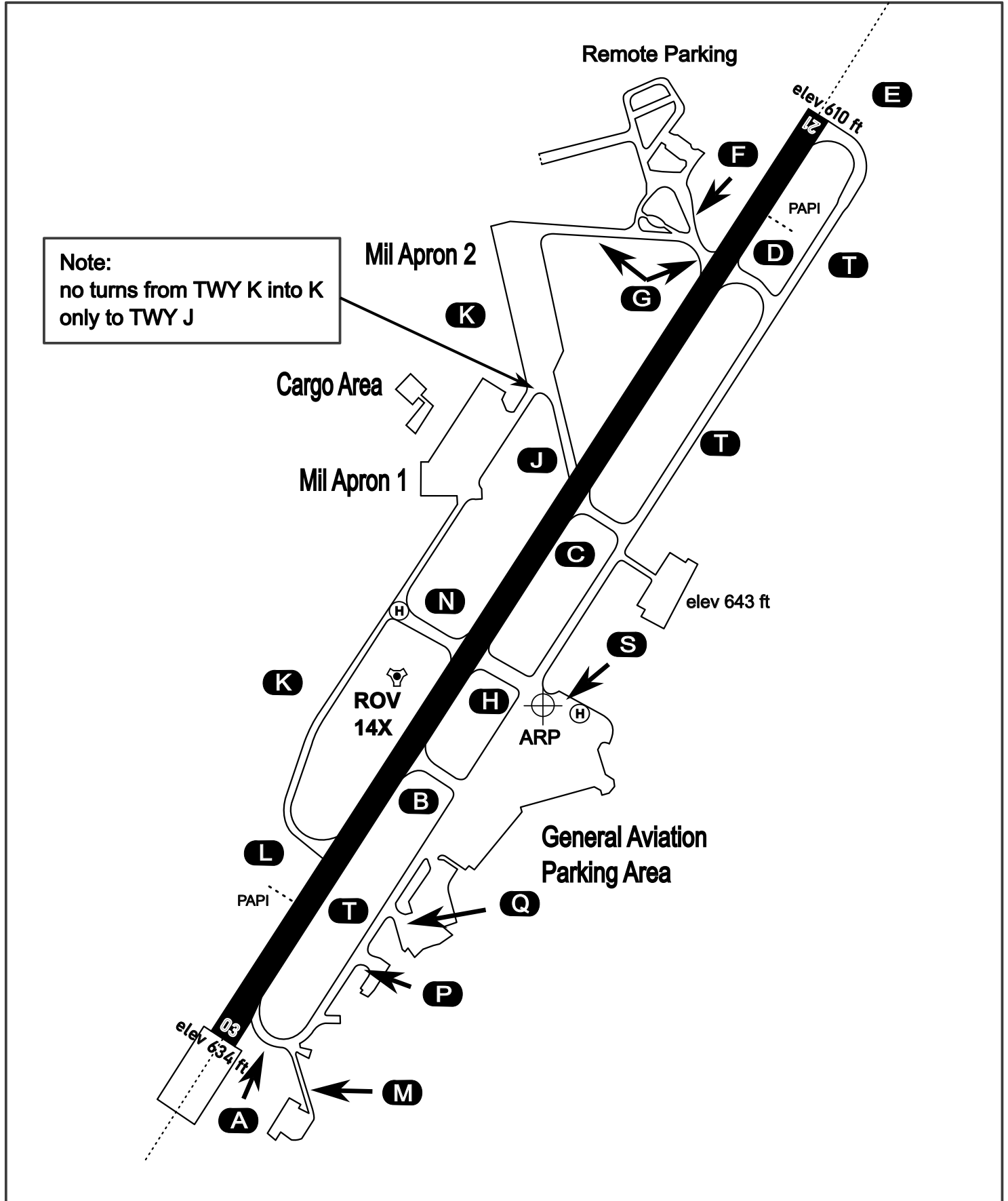
# AERODROME CHART

Rovaniemi Aerodrome

ARP N66° 33' 42" E025° 49' 51"

elev 643 ft

## ROVANIEMI, FINLAND



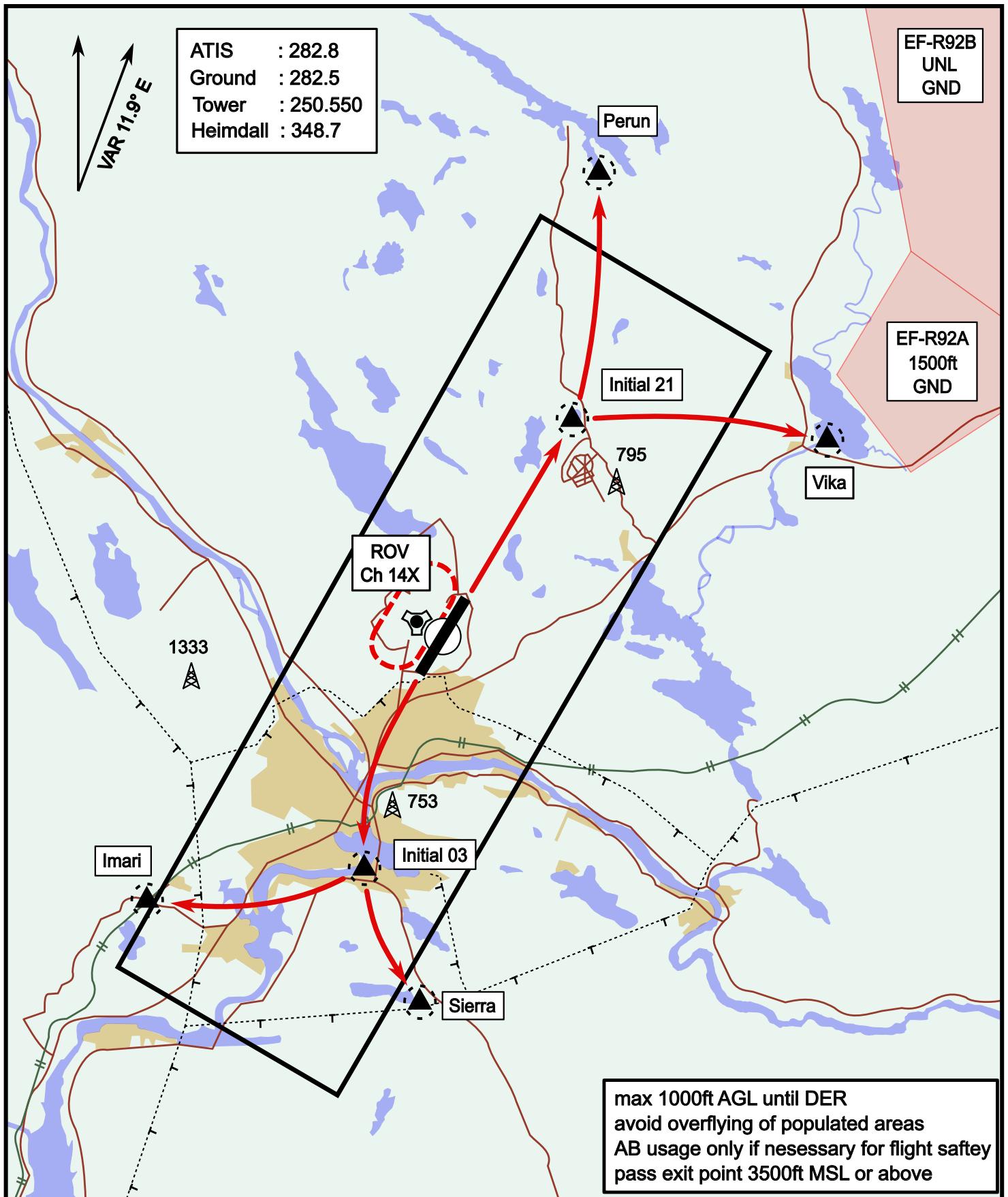
ATIS	Ground	Tower	Radar
282.800	282.500	250.550	348.700



# Visual Departure Jet

elev 643 ft

# Rovaniemi, Finland

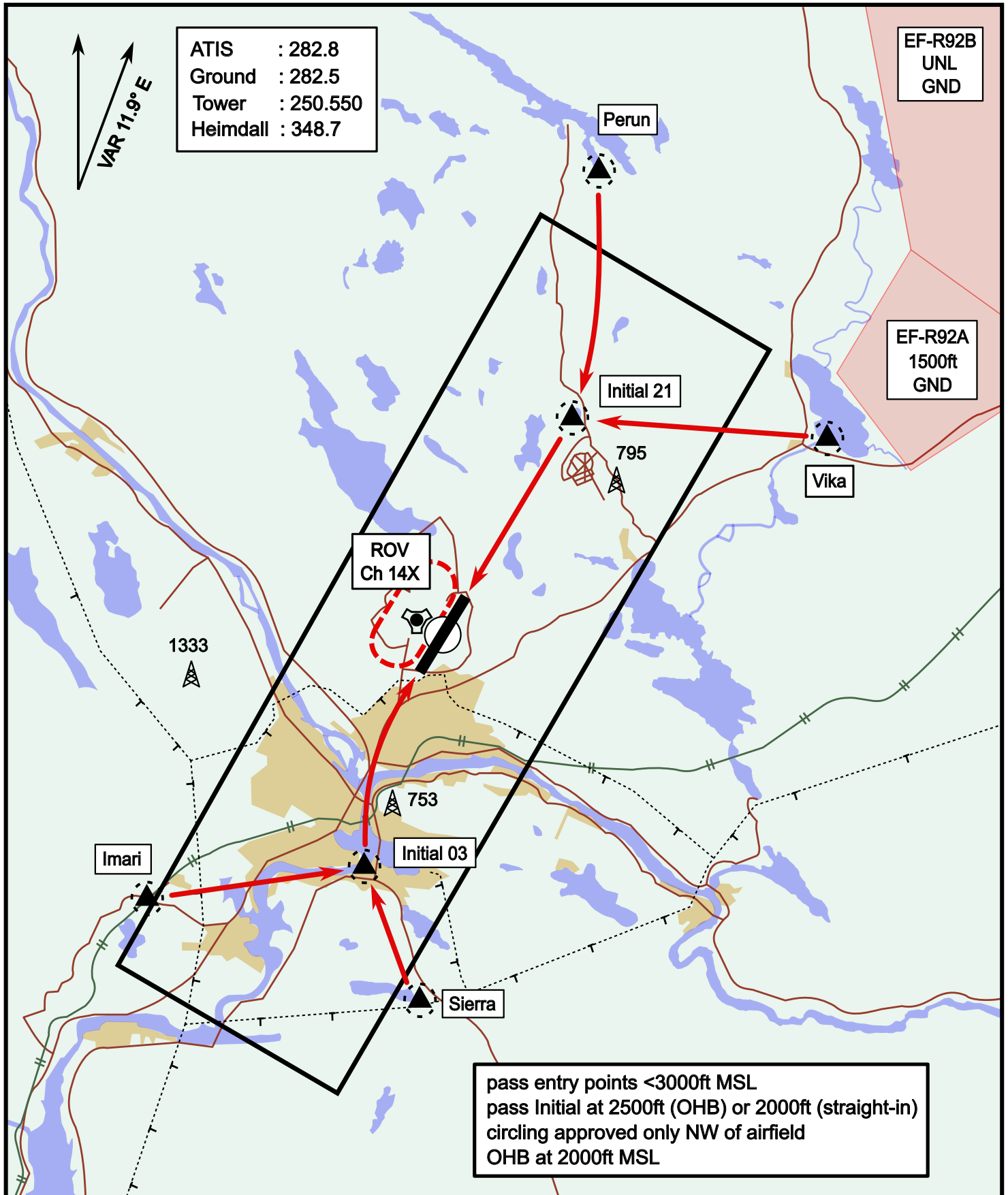


Vika	N66° 37.474 / E026° 13.557	Sierra	N66° 25.711 / E025° 46.610
Perun	N66° 44.135 / E026° 01.630	Imari	N66° 28.406 / E025° 31.291
Initial21	N66° 38.421 / E025° 58.682	Initial03	N66° 28.793 / E025° 44.105

# Visual Approach Jet

elev 643 ft

# Rovaniemi, Finland



Vika	N66° 37.474 / E026° 13.557	Sierra	N66° 25.711 / E025° 46.610
Perun	N66° 44.135 / E026° 01.630	Imari	N66° 28.406 / E025° 31.291
Initial21	N66° 38.421 / E025° 58.682	Initial03	N66° 28.793 / E025° 44.105