

MISSION DATA CARD

OPORD		Callsign		Mission		Date/Time		
3664/2025		Edelweiss 1		Training		172000FEB25		
Task	BJT					Freq		
AO	South Rovaniemi					134.75		
Departure				Recovery				
SID RWY 21				VFR Approach				
#	Callsign		Pilot		IFF	TCN	LSR	NET
-1	Edelweiss 1-1		Jinx		1711	1Y	1711	
-2	Edelweiss 1-2		Meteor		1712	64Y	1712	

LOADOUT

A/A						GUN	
A/G						CHF	
POD						FLR	
TKS						FUEL	

TOLD

	Takeoff	Target	Joker	Bingo	Land
FUEL	7163				

AIRBASES

	Name	TCN	ATIS	GND	TWR	RWY	Elev	ILS
Dep	Rovaniemi	14X	282.8	282.5	250.55	21	643	111.7
Arr	Rovaniemi	14X	282.8	282.5	250.55	21	643	111.7
Div	Kemi Tornio	106X			250.3	36	62	110.9

FLIGHTPLAN

#	Name	Navaid/Coords/DME	ALT	TOT
1	ROTKO	N66 57.633 E025 57.667	12000	
2	PERUN	N66 44 08.120 E026 01 37.812	3000	
3	VIKA	N66 37 28.469 E026 13 33.460	3000	
4	SIERRA	N66 25 42.681 E025 46 36.642	3000	
5	IMARI	N66 28 24.377 E025 31 17.480	3000	
6	NEMGU	N66 20 24.029 E024 41 39.025	3000	
7	6	N65 56 24.116 E024 36 10.547	3000	
8	Kemi Tornio	N65 46 53.344 E024 34 56.221	3000	
9	8	N65 37 09.287 E024 33 57.190	3000	
10	RENVİ	N66 04 33.600 E025 31 54.003	3000	
11	IBSAN	N66 42 30.019 E025 01 04.824	3000	
12	Rovaniemi	N66 33 53.445 E025 49 49.755	2000	

OTHER FLIGHTS

Callsign	Mission	Airframe	Freq	TCN	Grpld	Laser
Nazgul 7	Training	4x F-15E	262.45	1/64	2	116X
AO		Task	FAM-Flight			
Raptor 1	Training	4x F-16C	134.0	1/64		162X
AO	ESR01	Task	SA2/3 Sead / DEAD Training			
Monster 1	Training	4x A-10C	132.15	1/64	21	161X
AO	ESR04	Task	CAS			
Nasty 6	JTAC	1x Ground	35.5	1/64		160X
AO		Task	JTAC ESR04			
Nazgul 6	Training	4x F-15E	262.45	1/64		156X
AO	ENR02	Task	WVR Training			
Rattler 2	Training	4x AH-64D	133.5	1/64		125X
AO	R92 A, B, C	Task				

RADIO CHANNELS

#	Freq	Name
1		Flight/Squadron specific
2	282.8	Rovaniemi ATIS
3	282.5	Rovaniemi Ground
4	250.55	Rovaniemi Tower
5	320.7	Bodo ATIS
6	250.75	Bodo Tower
7	235.45	Kallax ATIS
8	250.3	Kallax Tower
9	265.0	Texaco-1 KC-135 Medium / Slow 71Y
10	319.8	Arco-1 KC-135 High / Fast 22Y
11	360.8	Shell-1 KC-135 MPRS High / Fast 41Y
12	304.0	CVN-71 Rough Rider (RRR) 71X
13	303.0	LHA-1 Tarawa (TWA) 79X
14	247.8	S-3B Mauler-1 (MAU) 64Y
15	347.8	Loki (E-2D)
16	348.7	Heimdall (E-3A)
17	242.17	ESR02 - CAS Range Operator
18	34.7	ESR02 - JTAC Odin
19	270.5	Blue
20	270.75	Red

RAMROD

0	1	2	3	4	5	6	7	8	9
C	U	R	T	S	E	Y	I	N	G

KTC 1400 C

	0	1	2	3	4	5	6	7	8	9
A	VKMG	WTE	DXS	CJ	OI	QBL	FU	PA	HN	YR
B	STHE	RLN	MYP	QC	JV	WAD	FK	OU	BX	IG
C	WVSP	ECT	BIQ	YG	NL	MRK	UX	JD	AO	HF
D	JFMO	CWP	KXI	TH	BY	GQV	EL	NR	UA	DS
E	QYMV	JAG	EHT	XD	WS	KNO	PC	IB	UL	FR
F	KXGE	FIJ	RON	UH	VW	TQY	BD	AC	ML	PS
G	OCEI	NGV	HQM	DB	XY	TPW	LK	SF	UA	JR
H	AEGL	BXU	CHY	IM	WR	ODJ	FP	QT	NV	KS
I	JQUL	OFD	AIG	XW	EH	VCB	RK	SY	MT	NP
J	MULV	HIQ	RGS	DC	PW	EAN	FB	TO	KY	XJ
K	MQBP	GUN	YIH	AV	CX	EOW	TS	JR	DK	FL
L	CUVT	HDP	ONK	QE	YM	GAF	LS	XW	BR	IJ
M	JRYQ	VIO	KXD	EA	CW	UMS	NH	BT	FL	GP
N	VHBY	PRW	IUS	DN	MT	JQG	EC	OA	LX	FK
O	YLUS	IBJ	XPQ	KN	CO	WVG	DH	FE	TA	RM
P	VXAW	GEQ	RDU	TO	MY	HNI	BJ	KF	PL	SC
Q	DOSQ	PHU	CXW	NG	AF	LIK	TB	ME	RJ	VY
R	BUHY	TFN	SLX	IV	GW	RAJ	MC	OK	QE	PD
S	JVHW	KXE	PUR	OM	TY	CGF	IL	DA	QN	BS
T	UROL	BTP	ACH	SM	VQ	EYD	WX	KJ	NG	FI
U	TVSH	DAO	UCR	KB	GY	JQL	PF	MN	EW	XI
V	JYSA	LUR	BQE	MF	XD	CTK	WV	NI	PG	OH
W	VKSO	EBA	LQR	XG	HN	JCP	WF	TY	MU	DI
X	CXRI	QAU	EOP	TJ	BY	WKF	VS	DG	MN	HL
Y	EWDV	OIS	KJT	PB	NR	MUG	QH	AL	CY	XF

NAVAIDS

Id	Name	Channel	Position	Elevation
BOO	Bodo	45	N67 15.838 E014 20.046	43
BNK	Banak	47	N70 03.937 E024 58.181	17
OYA	Andoya	28	N69 17.175 E016 08.658	19

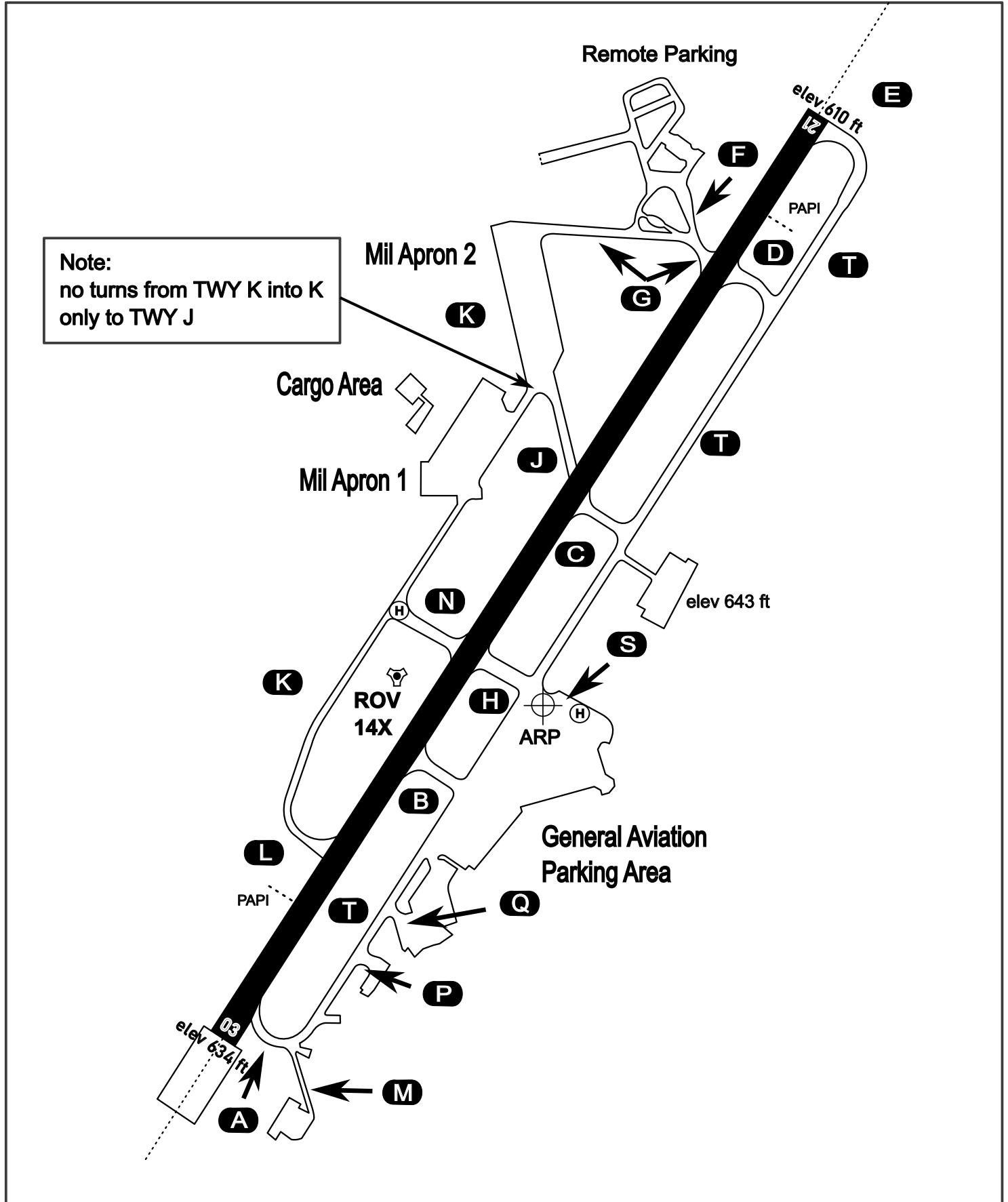
AERODROME CHART

Rovaniemi Aerodrome

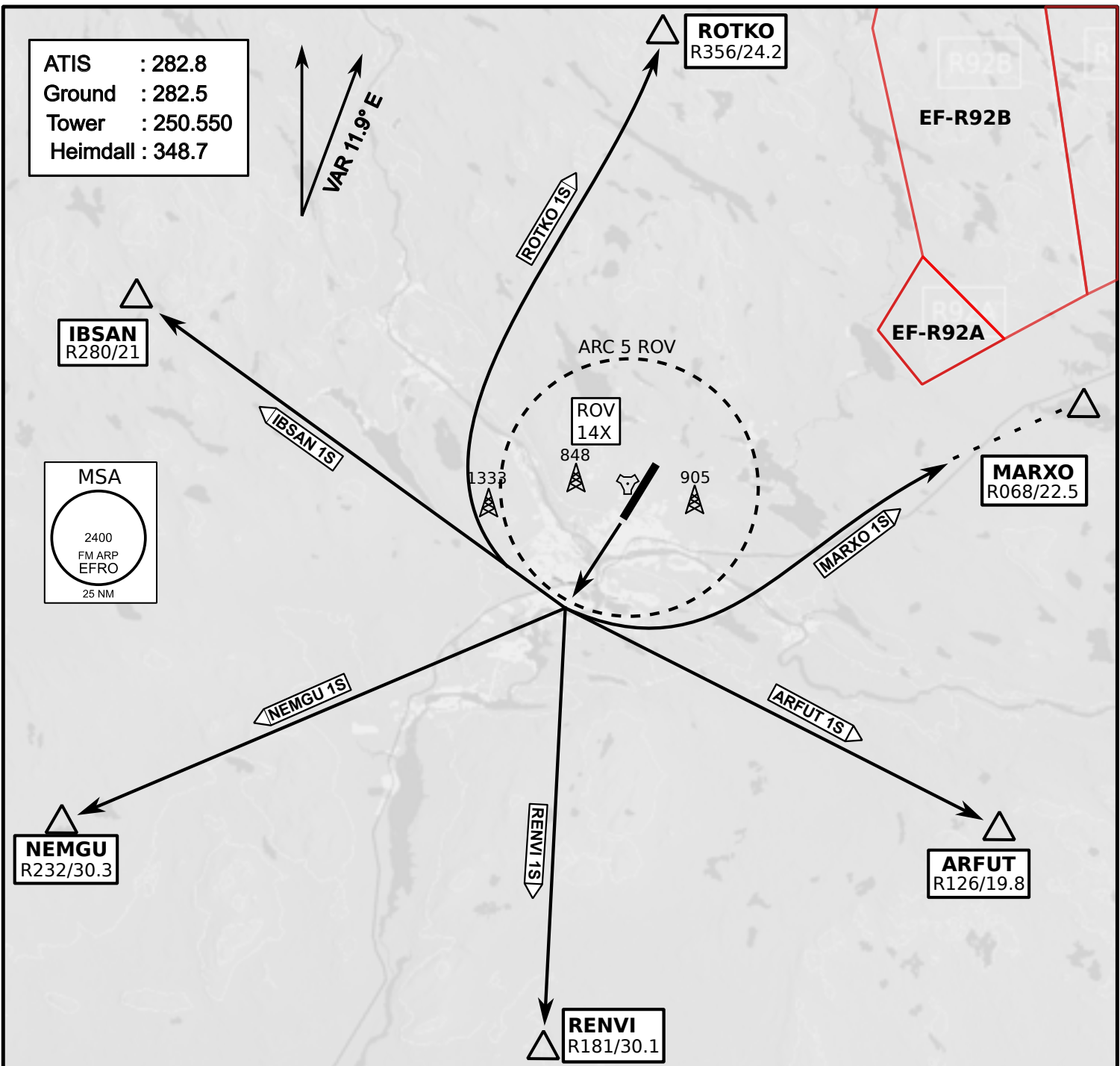
ARP N66° 33' 42" E025° 49' 51"

elev 643 ft

ROVANIEMI, FINLAND



ATIS	Ground	Tower	Radar
282.800	282.500	250.550	348.700

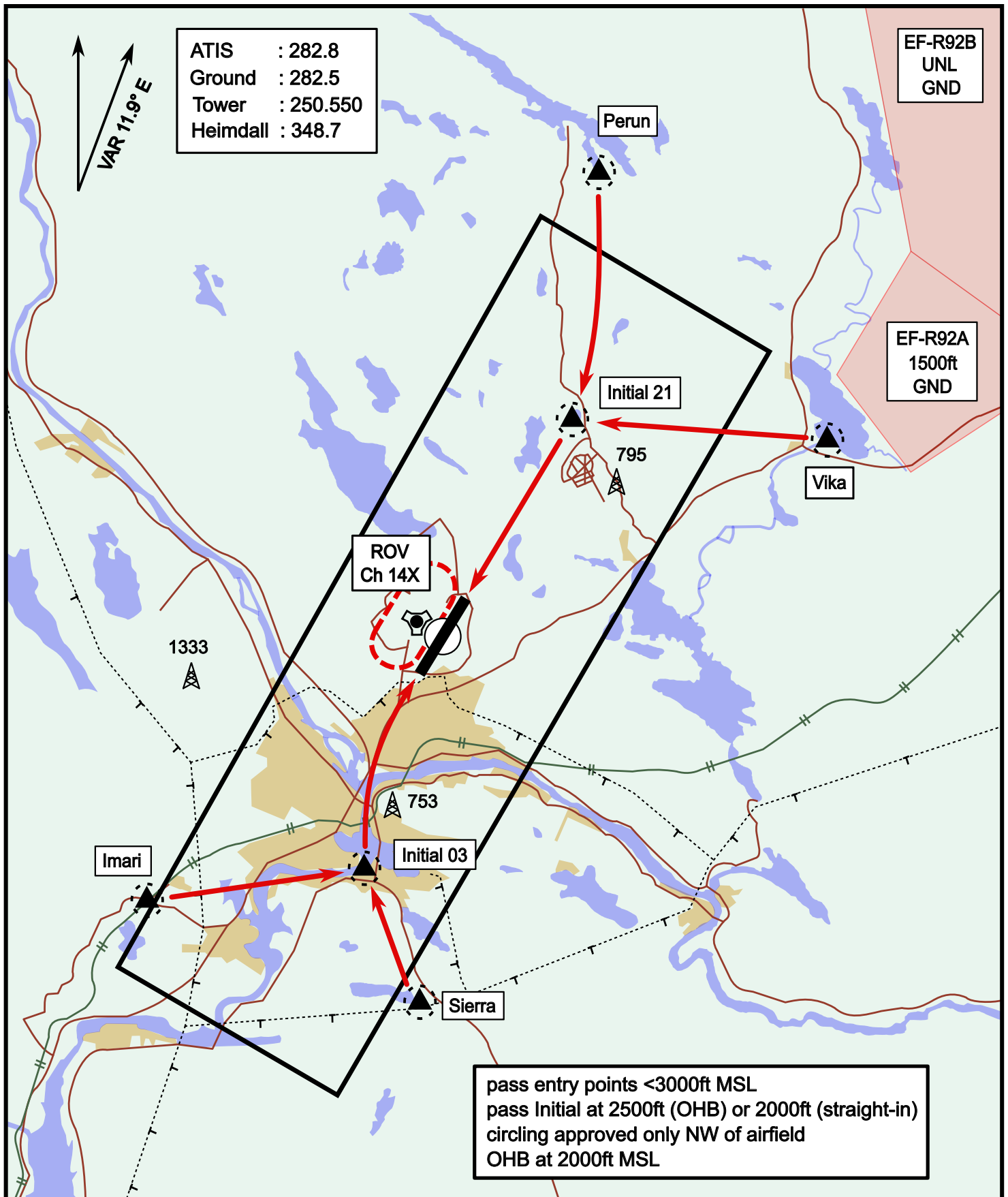


- Climb on Rwy heading to min A2000ft
- when passing A2000ft OR 5 DME ROV (whichever is later) turn direct exit point
- Stay outside ARC 5 ROV
- AB usage only if necessary for flight safety

Visual Approach Jet

elev 643 ft

Rovaniemi, Finland



Vika	N66° 37.474 / E026° 13.557	Sierra	N66° 25.711 / E025° 46.610
Perun	N66° 44.135 / E026° 01.630	Imari	N66° 28.406 / E025° 31.291
Initial21	N66° 38.421 / E025° 58.682	Initial03	N66° 28.793 / E025° 44.105

NOT AVAILABLE

NOT AVAILABLE