

**MISSION DATA CARD**

OPORD	Callsign	Mission	Date/Time			
3663/2025	Monster 1	Training	151300FEB25			
Task	CAS TRAINING					Freq
AO	ESR04					132.15
Departure			Recovery			
VFR Depature			VFR Approach			
#	Callsign	Pilot	IFF	TCN	LSR	NET
-1	Monster 1-1	addiks	1411	1Y	1611	21/01

**LOADOUT**

A/A	A9M	GUN	100% CM
A/G	7M282L, 2xA65D, 2xM82	CHF	360
POD	A184, TGP	FLR	120
TKS		FUEL	75%

**TOLD**

	Takeoff	Target	Joker	Bingo	Land
FUEL	8315				

**AIRBASES**

	Name	TCN	ATIS	GND	TWR	RWY	Elev	ILS
Dep	Rovaniemi	14X	282.8	282.5	250.55	21	643	111.7
Arr	Rovaniemi	14X	282.8	282.5	250.55	21	643	111.7

**FLIGHTPLAN**

#	Name	Navaid/Coords/DME	ALT	TOT
1	IBSAN	N66 42.500 E025 01.083		
2	NAFFI	N67 04.630 E023 11.660		
3	ENOXI	N66 54.960 E021 38.780		
4	ESR04Entry	N66 E021 37.096		
5	ESR04Cross	N65 50.819 E021 43.955		
6	IMARI	N66 28.406 E025 31.291		
7	SIERRA	N66 25.711 E025 46.610		
8	VIKA	N66 37.474 E026 13.557		
9	PERUN	N66 44.135 E026 01.630		

**COMMS**

Radio	Usage
1	132.15
2	2-4-16-2-4
3	35.50

## NOTES

JTAG NASTY-6

Contact Point NAFFI

## RADIO CHANNELS

#	Freq	Name
1		Flight/Squadron specific
2	282.8	Rovaniemi ATIS
3	282.5	Rovaniemi Ground
4	250.55	Rovaniemi Tower
5	320.7	Bodo ATIS
6	250.75	Bodo Tower
7	235.45	Kallax ATIS
8	250.3	Kallax Tower
9	265.0	Texaco-1   KC-135   Medium / Slow   71Y
10	319.8	Arco-1   KC-135   High / Fast   22Y
11	360.8	Shell-1   KC-135 MPRS   High / Fast   41Y
12	304.0	CVN-71 Rough Rider (RRR)   71X
13	303.0	LHA-1 Tarawa (TWA)   79X
14	247.8	S-3B Mauler-1 (MAU)  64Y
15	347.8	Loki (E-2D)
16	348.7	Heimdall (E-3A)
17	242.17	ESR02 - CAS Range Operator
18	34.7	ESR02 - JTAC Odin
19	270.5	Blue
20	270.75	Red

**RAMROD**

0	1	2	3	4	5	6	7	8	9
M	I	C	R	O	W	A	V	E	D

**KTC 1400 C**

	0	1	2	3	4	5	6	7	8	9
A	WTPU	OKB	YLQ	CF	EN	GDI	HJ	MX	VS	RA
B	JHOU	SAT	KWF	QX	RM	BYG	VE	DC	IL	NP
C	VKEA	SFU	NDP	JQ	GM	WRT	IL	BO	CH	XY
D	NQYE	IRM	TOJ	FG	XC	VPB	DK	WL	HU	SA
E	SMWY	TDX	LKV	CR	FH	PUB	GA	IO	NJ	QE
F	JLWS	NIT	AFU	HC	DM	VKB	YR	OP	GX	EQ
G	QXMV	PHK	JCF	DL	GY	AEN	SI	RW	BO	UT
H	DKYU	NLQ	OSF	CR	GE	WAT	HI	BM	JV	PX
I	PBUW	YRC	ADJ	MT	KL	XVE	GF	OS	NQ	HI
J	KCHR	UIE	TJL	OQ	AS	YWX	VD	MF	BN	GP
K	DEAH	WLI	NGT	QC	XP	UJR	MY	SV	FO	BK
L	BFAM	GRV	CDW	TL	JU	ESY	NX	HP	QI	OK
M	GTYH	PLR	UIC	WE	JM	VNQ	DO	KS	FB	XA
N	KXRY	LSD	PCU	JA	QW	OVH	NM	TE	FG	BI
O	NCUJ	GOL	SEP	DA	YI	KBF	TQ	XV	WR	MH
P	FEJG	ADT	VKR	OW	PS	MCU	QL	XH	BY	NI
Q	RESC	LMU	FYI	AB	VQ	WXK	HJ	DT	GO	NP
R	TLBR	QYN	SPI	DV	KX	UGF	JC	AM	OH	WE
S	IWLX	TAD	RQO	JF	NK	PUV	MH	CE	SG	YB
T	PHUI	EKL	ACV	RF	MD	YWX	GT	OJ	SN	QB
U	FKSL	CYU	DIH	VT	NR	WMB	XE	GP	JQ	OA
V	OVHP	IDN	EWT	XM	BK	USQ	AG	RJ	FY	LC
W	LXVY	ORI	SFN	CA	MB	UWT	QH	JG	PE	DK
X	ADIB	YCQ	PXS	GK	HJ	RON	LU	FW	VE	MT
Y	RYQV	EBC	OGH	NL	PS	XDT	UM	KF	JW	IA

**NAVAIDS**

Id	Name	Channel	Position	Elevation
BOO	Bodo	45	N67 15.838 E014 20.046	43
BNK	Banak	47	N70 03.937 E024 58.181	17
OYA	Andoya	28	N69 17.175 E016 08.658	19

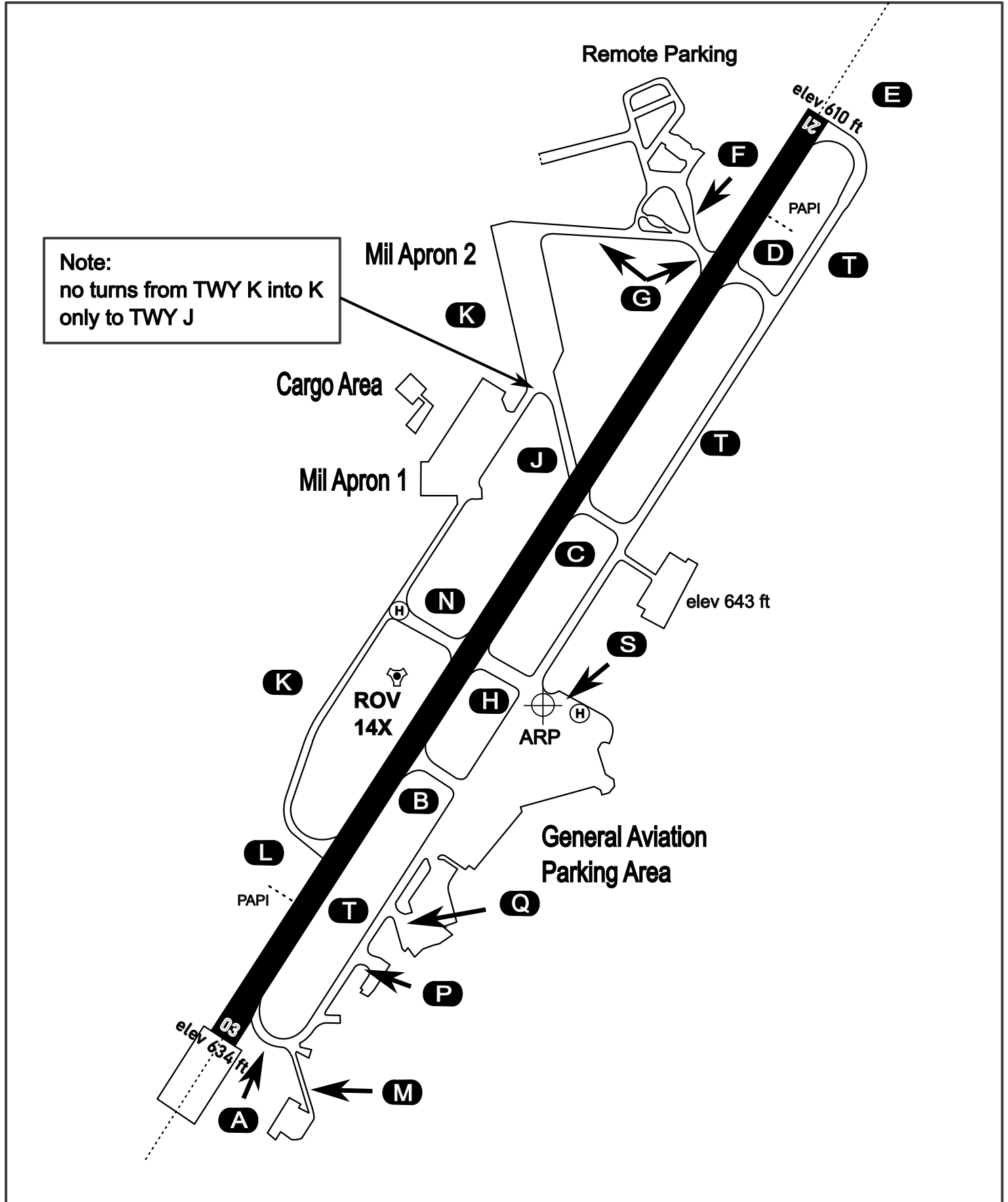
# AERODROME CHART

Rovaniemi Aerodrome

ARP N66° 33' 42" E025° 49' 51"

elev 643 ft

## ROVANIEMI, FINLAND

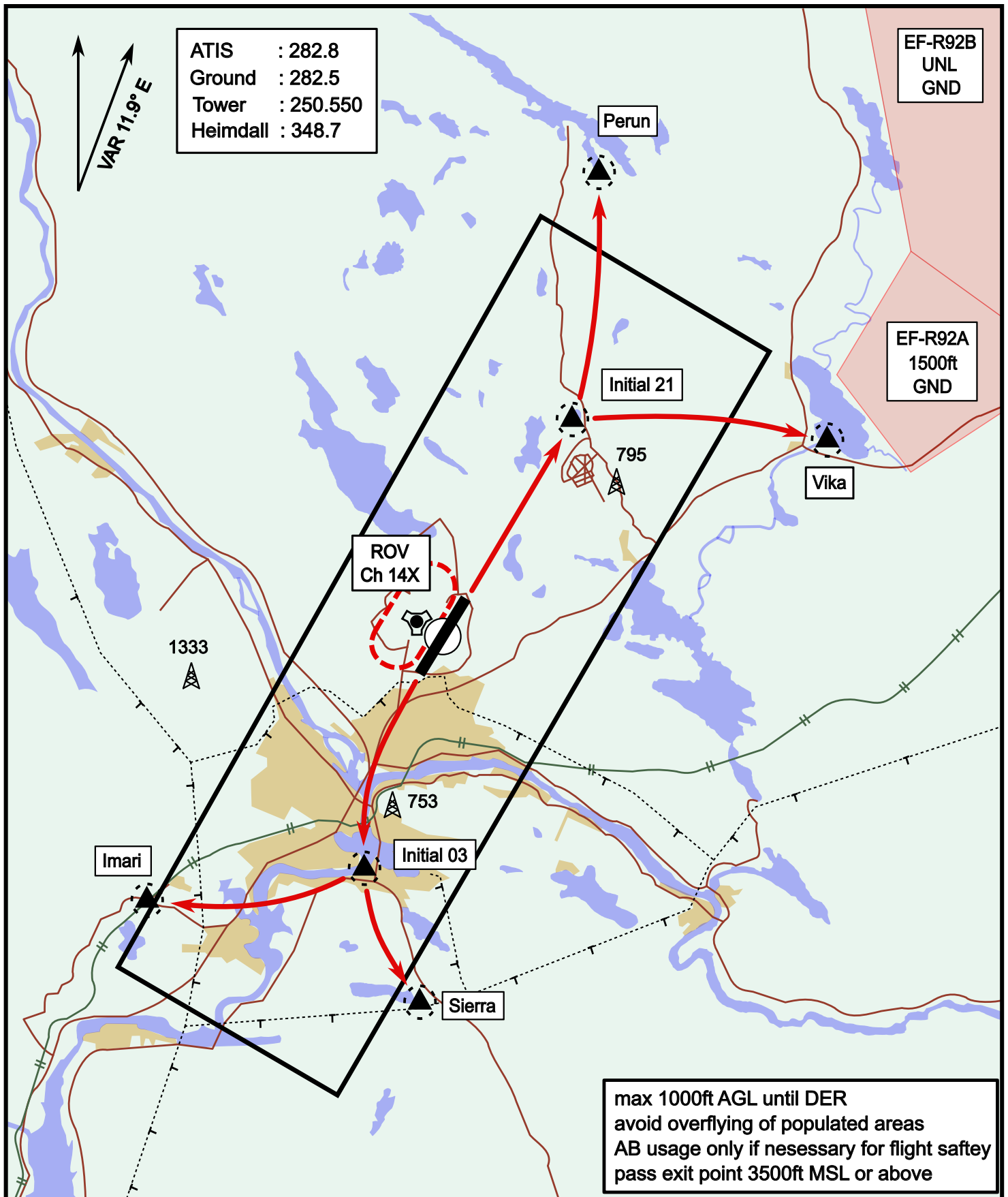


ATIS	Ground	Tower	Radar
282.800	282.500	250.550	348.700

# Visual Departure Jet

elev 643 ft

# Rovaniemi, Finland



Vika	N66° 37.474 / E026° 13.557	Sierra	N66° 25.711 / E025° 46.610
Perun	N66° 44.135 / E026° 01.630	Imari	N66° 28.406 / E025° 31.291
Initial21	N66° 38.421 / E025° 58.682	Initial03	N66° 28.793 / E025° 44.105



