

MISSION DATA CARD

OPORD		Callsign		Mission		Date/Time		
3662/2025		Edelweiss 1		Training		142230FEB25		
Task	Bomb Circles R93A-North					Freq		
AO						264.45		
Departure				Recovery				
VFR Departure				VFR Approach				
#	Callsign		Pilot		IFF	TCN	LSR	NET
-1	Edelweiss 1-1		Monte		1741	1Y	1741	

LOADOUT

A/A	2xA9X				GUN	100% HEI-T	
A/G	4xM82				CHF	120	
POD					FLR	0	
TKS	3xFPU-8A				FUEL	100%	

TOLD

	Takeoff	Target	Joker	Bingo	Land
FUEL	17535				

AIRBASES

	Name	TCN	ATIS	GND	TWR	RWY	Elev	ILS
Dep	Rovaniemi	14X	282.8	282.5	250.55	21	643	111.7
Arr	Rovaniemi	14X	282.8	282.5	250.55	21	643	111.7

FLIGHTPLAN

#	Name	Navaid/Coords/DME	ALT	TOT
1	RVNInit21	N66 38.642 E025 58.682	2000	
2	PERUN	N66 44.135 E026 01.630	3500	
3	R93A-BC- North	N67 22.646 E026 22.790	740	
4	RVNInit03	N66 28.793 E025 44.105	2000	
5	IMARI	N66 28.406 E025 31.291	3500	

SUPPORT**Tanker**

Callsign	TCN	Freq	ALT	TAS
SHELL 1	41Y	360.8		
Pos				

RADIO CHANNELS

#	Freq	Name
1		Flight/Squadron specific
2	282.8	Rovaniemi ATIS
3	282.5	Rovaniemi Ground
4	250.55	Rovaniemi Tower
5	320.7	Bodo ATIS
6	250.75	Bodo Tower
7	235.45	Kallax ATIS
8	250.3	Kallax Tower
9	265.0	Texaco-1 KC-135 Medium / Slow 71Y
10	319.8	Arco-1 KC-135 High / Fast 22Y
11	360.8	Shell-1 KC-135 MPRS High / Fast 41Y
12	304.0	CVN-71 Rough Rider (RRR) 71X
13	303.0	LHA-1 Tarawa (TWA) 79X
14	247.8	S-3B Mauler-1 (MAU) 64Y
15	347.8	Loki (E-2D)
16	348.7	Heimdall (E-3A)
17	242.17	ESR02 - CAS Range Operator
18	34.7	ESR02 - JTAC Odin
19	270.5	Blue
20	270.75	Red

RAMROD

0	1	2	3	4	5	6	7	8	9
R	E	S	T	U	D	Y	I	N	G

KTC 1400 C

	0	1	2	3	4	5	6	7	8	9
A	BJWK	FCS	YUR	QX	AP	EHO	IT	VD	LM	NG
B	NTRM	GWU	KBS	EP	QA	VCD	OI	XL	FY	HJ
C	DNQO	MYK	ICG	HJ	EV	FSB	WU	RT	PL	XA
D	JCGX	QKD	SFV	OY	WE	ATP	HB	MI	UL	RN
E	JUVO	EWA	SXH	KG	CM	LFB	RQ	YI	NP	TD
F	ATKJ	UQP	OCW	DR	FI	YEM	XB	VN	GL	SH
G	VNUH	EIR	AYB	GM	XD	WOP	FQ	JS	LC	TK
H	YPCA	HDU	IWF	TV	JX	GSK	BO	EQ	LM	NR
I	GECI	HFA	VJO	PK	DX	QNR	SU	BL	MY	TW
J	FRGM	LUI	WKY	OT	HB	PJA	NQ	CD	VX	ES
K	FLRJ	NBI	YXE	QW	KV	UAC	SD	HT	MO	PG
L	BLDT	RHM	WNX	US	QF	KAI	EC	VY	JO	PG
M	JRPX	VHW	NFM	TE	YK	UDQ	OC	SG	AB	IL
N	EIDG	JFY	CLK	HR	AQ	UOM	TX	BP	VN	WS
O	OVPE	JHM	GWS	TF	UC	RBQ	DK	LY	AN	IX
P	PJWG	NTO	CUS	VI	KQ	DHF	RA	XE	BL	YM
Q	HUAS	LYT	KNO	RM	IC	QXJ	FW	GP	VE	DB
R	WRKJ	FIT	USG	LN	MH	OBV	CX	PY	AD	QE
S	NARI	DHV	MXU	KE	WJ	CPL	QB	GY	FS	TO
T	UGRQ	SPX	NJM	TO	AF	YBE	DK	VW	LC	IH
U	YFER	QBL	AKI	CG	VH	SXO	DT	UM	PN	JW
V	PGSN	QJE	KXR	LD	AM	WOU	TB	HC	FI	YV
W	SVYN	WQU	HRP	CO	BE	GFK	IX	JT	AL	MD
X	OKBQ	XAM	RWU	HS	LF	VYG	DT	IC	PN	EJ
Y	RINS	KPL	GOT	AH	UX	DVF	WM	QC	BY	EJ

NAVAIDS

Id	Name	Channel	Position	Elevation
BOO	Bodo	45	N67 15.838 E014 20.046	43
BNK	Banak	47	N70 03.937 E024 58.181	17
OYA	Andoya	28	N69 17.175 E016 08.658	19

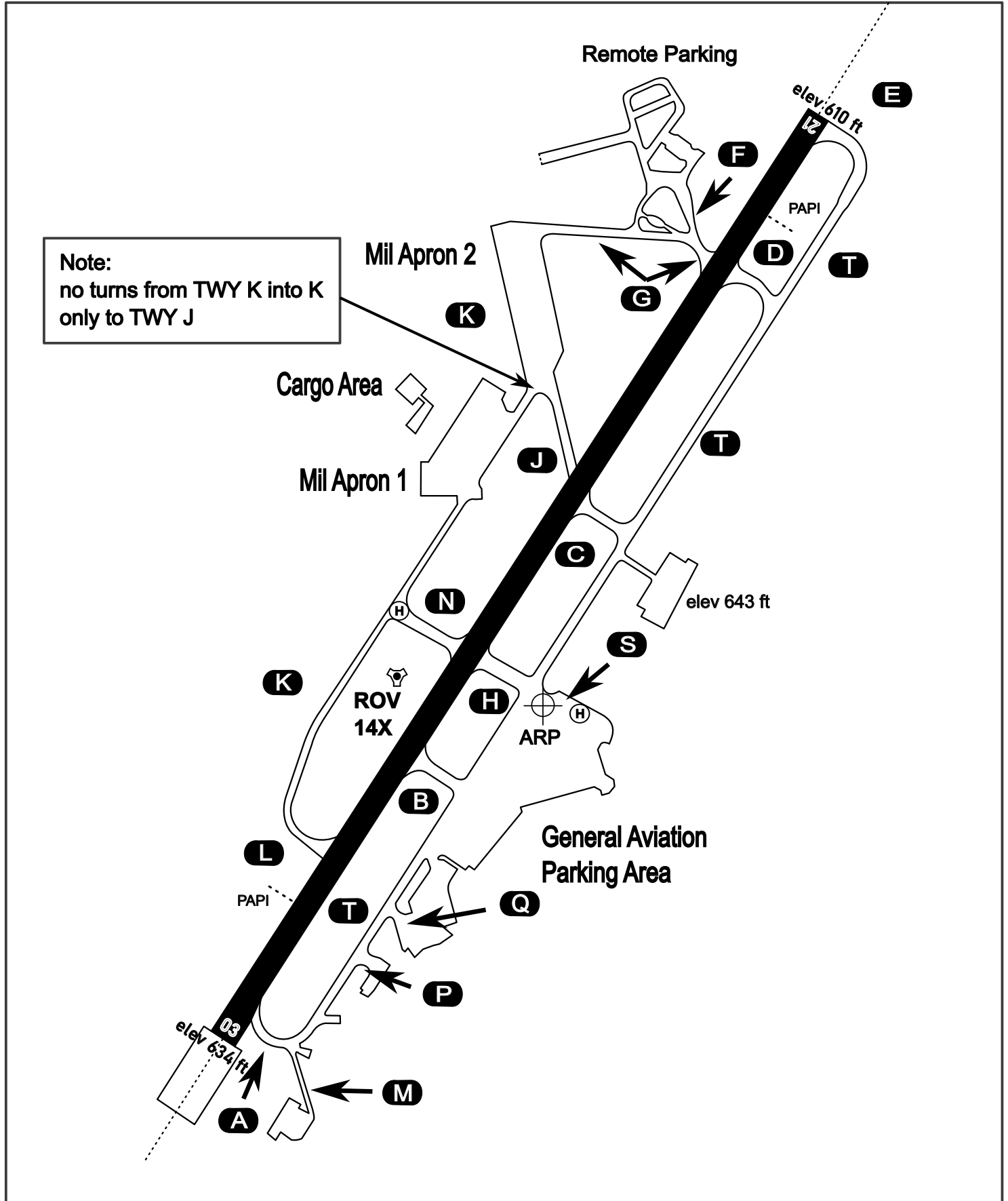
AERODROME CHART

Rovaniemi Aerodrome

ARP N66° 33' 42" E025° 49' 51"

elev 643 ft

ROVANIEMI, FINLAND

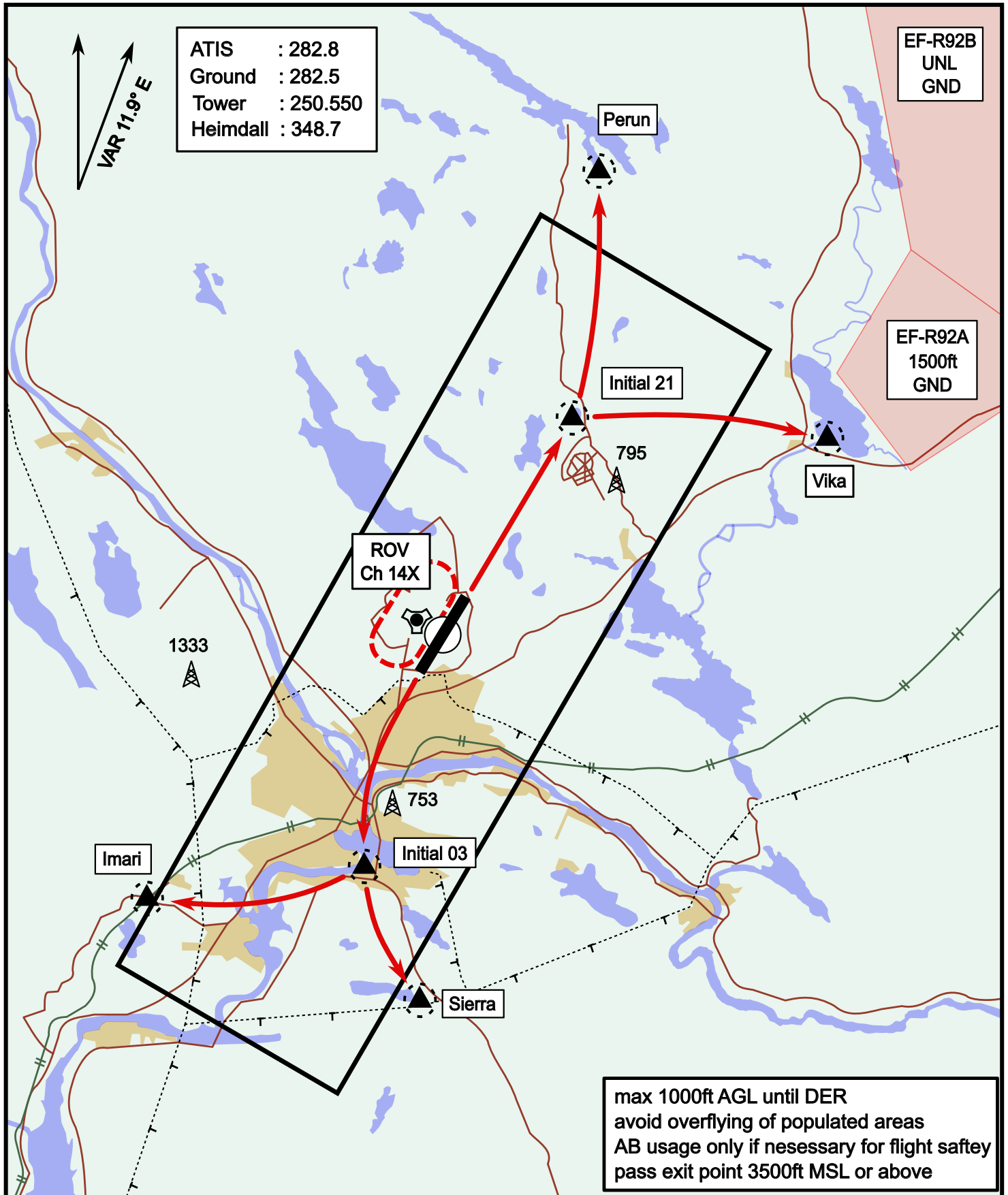


ATIS	Ground	Tower	Radar
282.800	282.500	250.550	348.700

Visual Departure Jet

elev 643 ft

Rovaniemi, Finland

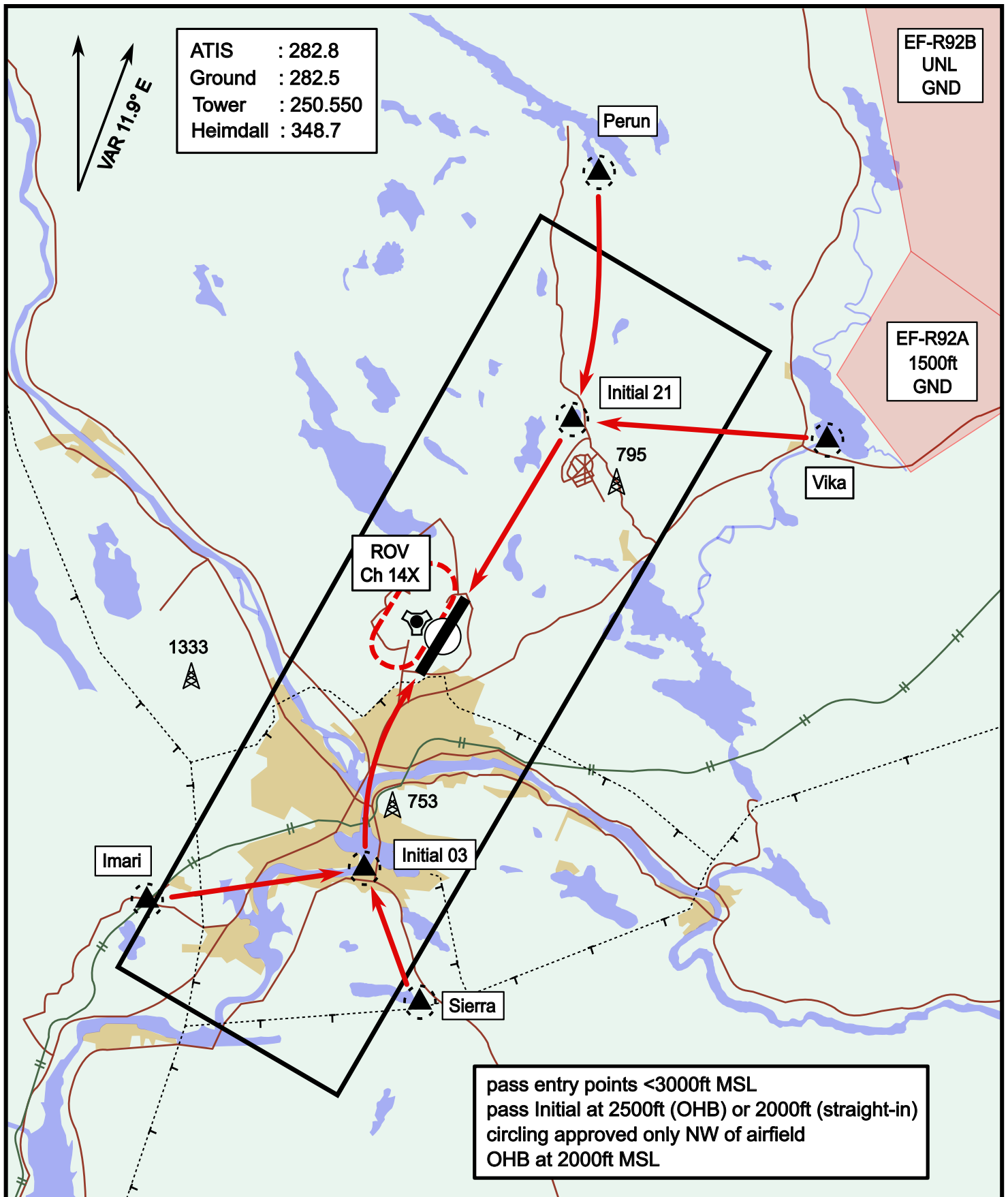


Vika	N66° 37.474 / E026° 13.557	Sierra	N66° 25.711 / E025° 46.610
Perun	N66° 44.135 / E026° 01.630	Imari	N66° 28.406 / E025° 31.291
Initial21	N66° 38.421 / E025° 58.682	Initial03	N66° 28.793 / E025° 44.105

Visual Approach Jet

elev 643 ft

Rovaniemi, Finland



Vika	N66° 37.474 / E026° 13.557	Sierra	N66° 25.711 / E025° 46.610
Perun	N66° 44.135 / E026° 01.630	Imari	N66° 28.406 / E025° 31.291
Initial21	N66° 38.421 / E025° 58.682	Initial03	N66° 28.793 / E025° 44.105