

MISSION DATA CARD

OPORD		Callsign		Mission		Date/Time	
3657/2025		Raptor 2		Training		132030FEB25	
Task	SEAD Training SA-2					Freq	
AO						134.5	
Departure				Recovery			
SID RWY 21				VFR Approach			
#	Callsign	Pilot	IFF	TCN	LSR	NET	
-1	Raptor 2-1	Jinx	1621	21Y	1621		
-2	Raptor 2-2	Beathovenz	1622	84Y	1622		
-3	Raptor 2-3	Hercules	1623	84X	1623		

LOADOUT

A/A	2xA120B, 2xA9L	GUN	100% SAPHEI
A/G	2xA88C	CHF	90
POD	HTS, A184L, TGP	FLR	30
TKS	2xFT300	FUEL	100%

TOLD

	Takeoff	Target	Joker	Bingo	Land
FUEL	11169	9000	5500	3500	1500

AIRBASES

	Name	TCN	ATIS	GND	TWR	RWY	Elev	ILS
Dep	Rovaniemi	14X	282.8	282.5	250.55	21	643	111.7
Arr	Rovaniemi	14X	282.8	282.5	250.55	21	643	111.7

FLIGHTPLAN

#	Name	Navaid/Coords/DME	ALT	TOT
1	RVNInit21	N66 38.642 E025 58.682	2500	
2	PERUN	N66 44.135 E026 01.630	3500	
3	IBSAN	N66 42.500 E025 01.083	15000	
4	NAFFI	N67 04.630 E023 11.660	22000	
5	SEPJA	N67 27.300 E021 12.080	22000	
6	T-ESR01 SA3	N68 21.971 E021 20.001	1854	
7	SEPJA	N67 27.300 E021 12.080	20000	
8	NAFFI	N67 04.630 E023 11.660	20000	
9	IBSAN	N66 42.500 E025 01.083	20000	
10	IMARI	N66 28.406 E025 31.291	3000	
11	RVNInit03	N66 28.793 E025 44.105	2000	

SUPPORT**Tanker**

Callsign	TCN	Freq	ALT	TAS
ARCO 1	22Y	319.8		
	Pos			

AWACS

Callsign	Freq	ALT	Pos
HEIMDALL	348.7		

OTHER FLIGHTS

Callsign	Mission	Airframe	Freq	TCN	Grpld	Laser
Edelweiss 1	Training	4x F-16C	134.75	1/64		171X
AO		Task				
Tiger 1	Training	4x F/A-18C	261.15	1/64		155X
AO	ENR06	Task	Anti Ship			
Raptor 1	Training	4x F-16C	134.0	1/64		162X
AO		Task	SEAD Training SA-2			
Monster 1	Training	4x A-10C	132.15	1/64	21	161X
AO	ESR04	Task	CAS			
Nasty 6	JTAC	1x Ground	35.5	1/64		160X
AO		Task	JTAC ESR04			
Edelweiss 4	Training	1x F/A-18C	264.45	1/64		174X
AO		Task	Bomb Circles R93A-North			
Tiger 7	Training	3x F/A-18C	263.35	1/64		155X
AO		Task				
Rattler 2	Training	4x AH-64D	133.5	1/64		125X
AO	R92 A, B, C	Task				

RADIO CHANNELS

#	Freq	Name
1		Flight/Squadron specific
2	282.8	Rovaniemi ATIS
3	282.5	Rovaniemi Ground
4	250.55	Rovaniemi Tower
5	320.7	Bodo ATIS
6	250.75	Bodo Tower
7	235.45	Kallax ATIS
8	250.3	Kallax Tower
9	265.0	Texaco-1 KC-135 Medium / Slow 71Y
10	319.8	Arco-1 KC-135 High / Fast 22Y
11	360.8	Shell-1 KC-135 MPRS High / Fast 41Y
12	304.0	CVN-71 Rough Rider (RRR) 71X
13	303.0	LHA-1 Tarawa (TWA) 79X
14	247.8	S-3B Mauler-1 (MAU) 64Y
15	347.8	Loki (E-2D)
16	348.7	Heimdall (E-3A)
17	242.17	ESR02 - CAS Range Operator
18	34.7	ESR02 - JTAC Odin
19	270.5	Blue
20	270.75	Red

RAMROD

0	1	2	3	4	5	6	7	8	9
H	U	M	A	N	I	Z	E	R	S

KTC 1400 C

	0	1	2	3	4	5	6	7	8	9
A	XTLP	EHB	WRS	OK	FA	MVN	YC	IU	QG	JD
B	EYGW	TJQ	NPL	UR	HB	IOA	SC	FK	VX	MD
C	OFER	MLW	DTN	BJ	XA	PGS	HC	UQ	KY	VI
D	UXET	APR	LVQ	NG	IM	CHB	DK	SO	YF	JW
E	TENG	MUO	CQJ	DL	AB	IVR	YW	PS	XH	FK
F	TRUY	XCF	VQI	JS	MD	AGP	BO	EK	NH	LW
G	TVIK	Ouw	BJE	QA	NX	FGH	LC	SR	MY	PD
H	EQMO	VUD	RNT	KC	JG	FIP	AW	YH	LB	XS
I	PBUA	MRG	XHI	KT	EL	CWO	NF	QD	SY	JV
J	YVHE	BJP	XMR	CI	LQ	UDS	ON	AT	FK	GW
K	DUEI	XLB	KNP	OH	FV	WTA	GY	SC	MR	JQ
L	BWIR	VFL	XMU	SP	GD	OCQ	HT	YE	JA	NK
M	LHRW	UEO	JIT	DY	VN	PXB	GF	QC	KM	SA
N	DOTI	MAE	XUY	LG	NW	VCH	BK	QS	FP	RJ
O	LGyv	TWO	IBU	FK	RD	MPQ	XS	NJ	AH	CE
P	KJIH	OEB	TNY	RX	GC	VMS	QA	PU	LD	WF
Q	QRFP	DEW	IOY	AJ	SU	XNH	KV	MT	BL	GC
R	COYV	MGB	NHW	TE	PK	IFX	LQ	AR	UD	JS
S	LOIM	BGH	UWK	YV	FE	TDN	CP	RA	SJ	XQ
T	NKLF	RHG	CUP	OE	VJ	XAS	TI	YW	MQ	BD
U	CNGJ	PKQ	DLM	VO	WU	YRT	IE	XB	HF	SA
V	NAOR	BFS	KVW	GD	CH	JIQ	MT	XE	YU	LP
W	EGSK	CVM	OHU	DW	YA	FXR	QI	LP	BN	JT
X	CBVW	LPF	TYN	MR	HA	EIK	XO	JD	UQ	GS
Y	EGJP	YAR	MLD	KF	NS	WBX	CQ	HT	IO	VU

NAVAIDS

Id	Name	Channel	Position	Elevation
BOO	Bodo	45	N67 15.838 E014 20.046	43
BNK	Banak	47	N70 03.937 E024 58.181	17
OYA	Andoya	28	N69 17.175 E016 08.658	19

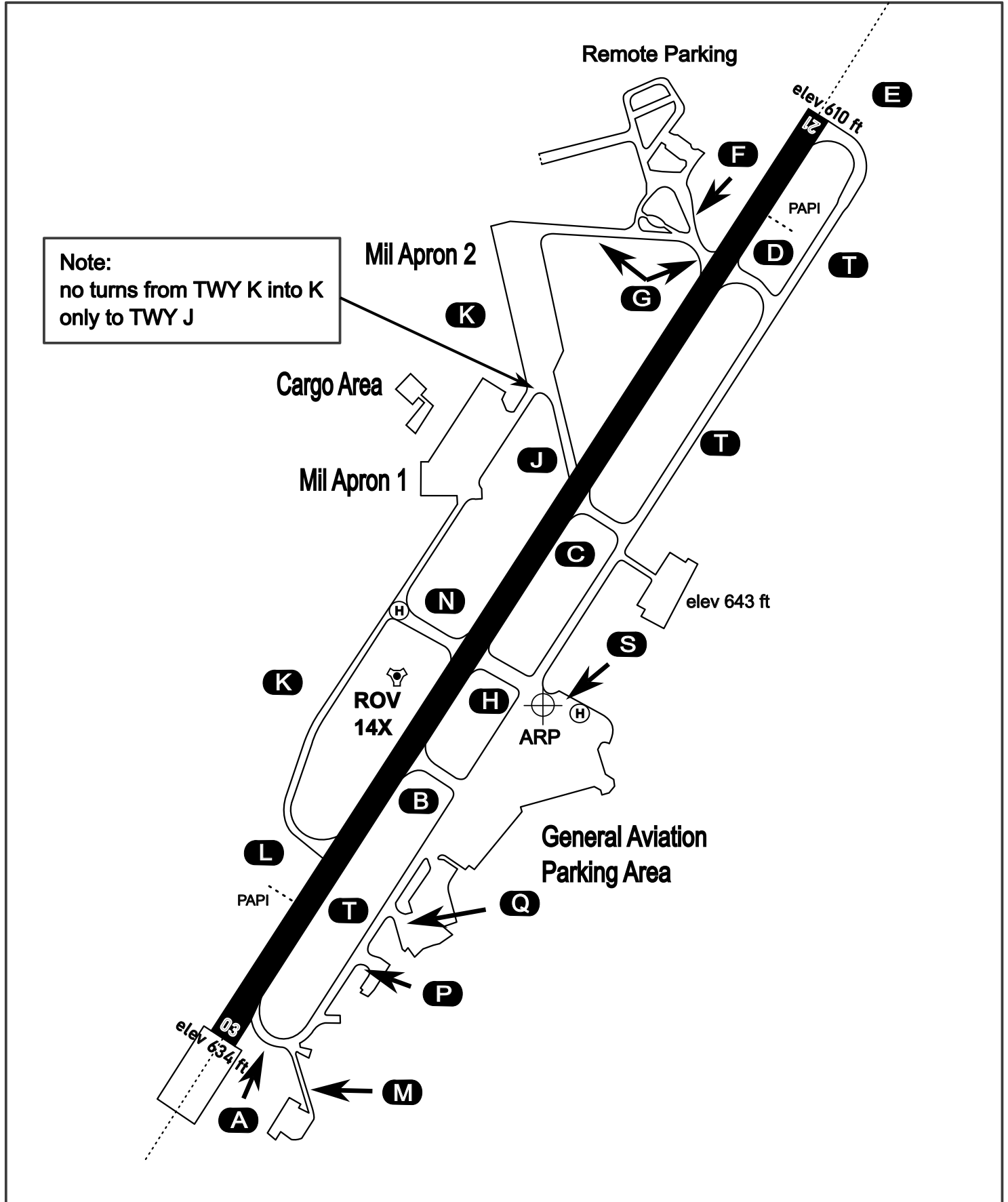
AERODROME CHART

Rovaniemi Aerodrome

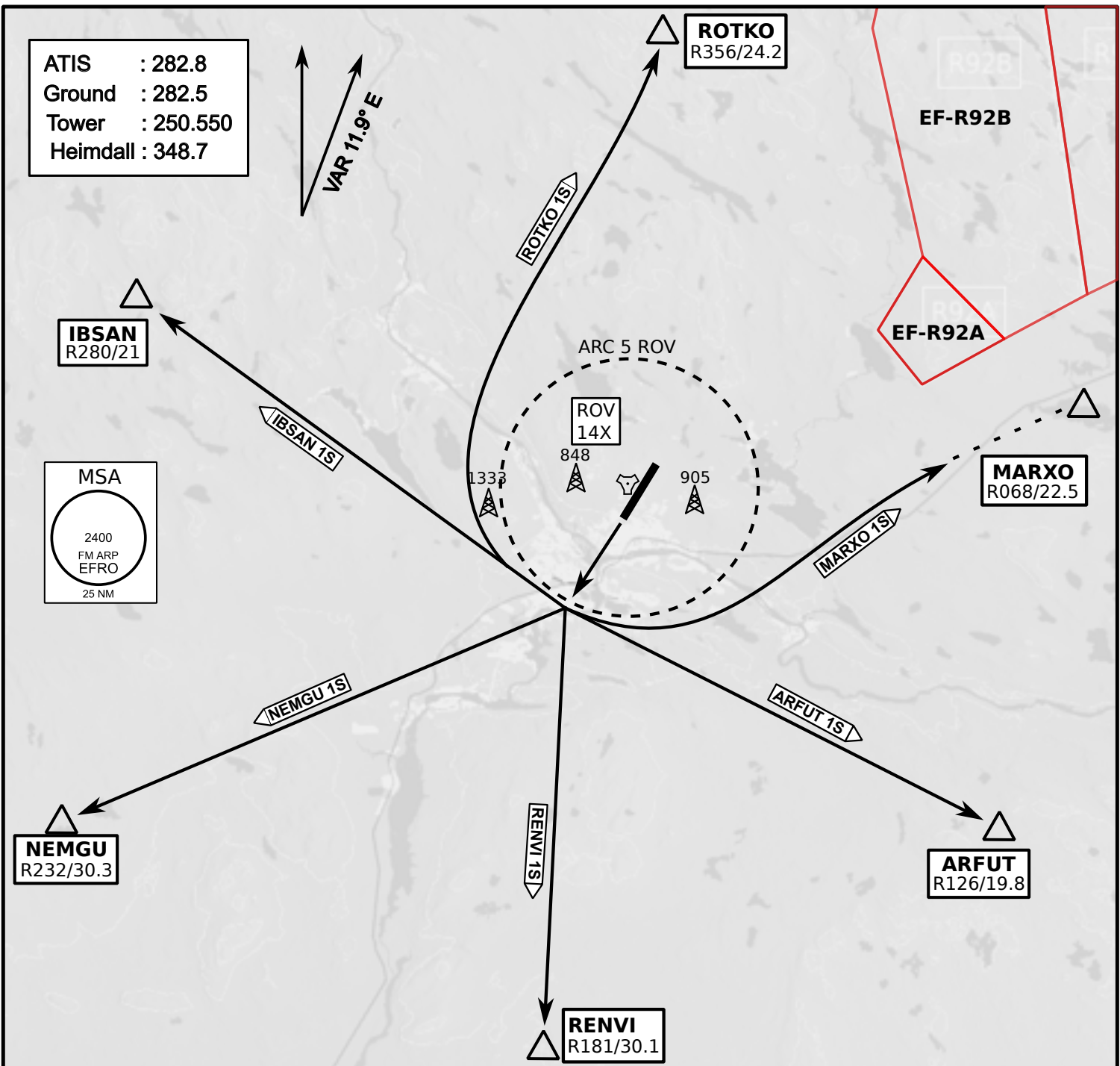
ARP N66° 33' 42" E025° 49' 51"

elev 643 ft

ROVANIEMI, FINLAND



ATIS	Ground	Tower	Radar
282.800	282.500	250.550	348.700



ATIS : 282.8
Ground : 282.5
Tower : 250.550
Heimdall : 348.7

MSA
2400
FM ARP
EFRO
25 NM

IBSAN
R280/21

ROTKO
R356/24.2

EF-R92B

EF-R92A

MARXO
R068/22.5

NEMGU
R232/30.3

ARFUT
R126/19.8

REIVI
R181/30.1

- Climb on Rwy heading to min A2000ft
- when passing A2000ft OR 5 DME ROV (whichever is later) turn direct exit point
- Stay outside ARC 5 ROV
- AB usage only if necessary for flight safety

Visual Approach Jet

elev 643 ft

Rovaniemi, Finland



Vika	N66° 37.474 / E026° 13.557	Sierra	N66° 25.711 / E025° 46.610
Perun	N66° 44.135 / E026° 01.630	Imari	N66° 28.406 / E025° 31.291
Initial21	N66° 38.421 / E025° 58.682	Initial03	N66° 28.793 / E025° 44.105