

**MISSION DATA CARD**

OPORD		Callsign		Mission		Date/Time	
3654/2025		Raptor 1		Training		132030FEB25	
Task	SEAD Training SA-2					Freq	
AO						134.0	
Departure				Recovery			
VFR Depature				VFR Approach			
#	Callsign	Pilot	IFF	TCN	LSR	NET	
-1	Raptor 1-1	Void	1611	1Y	1621		
-2	Raptor 1-2	Woodman	1612	64Y	1622		
-3	Raptor 1-3	Newbie	1613	64X	1623		

**LOADOUT**

A/A	2xA120B, 2xA9L			GUN	100% SAPHEI
A/G	2xC105			CHF	90
POD	HTS, A184L, TGP			FLR	30
TKS	2xFT300			FUEL	100%

**TOLD**

	Takeoff	Target	Joker	Bingo	Land
FUEL	11169	9000	5500	3500	1500

**AIRBASES**

	Name	TCN	ATIS	GND	TWR	RWY	Elev	ILS
Dep	Rovaniemi	14X	282.8	282.5	250.55	21	643	111.7
Arr	Rovaniemi	14X	282.8	282.5	250.55	21	643	111.7

**FLIGHTPLAN**

#	Name	Navaid/Coords/DME	ALT	TOT
1	RVNInit21	N66 38.642 E025 58.682	2500	
2	PERUN	N66 44.135 E026 01.630	3500	
3	IBSAN	N66 42.500 E025 01.083	15000	
4	NAFFI	N67 04.630 E023 11.660	22000	
5	SEPJA	N67 27.300 E021 12.080	22000	
6	T-ESR01 SA3	N68 21.971 E021 20.001	1854	
7	SEPJA	N67 27.300 E021 12.080	20000	
8	NAFFI	N67 04.630 E023 11.660	20000	
9	IBSAN	N66 42.500 E025 01.083	20000	
10	IMARI	N66 28.406 E025 31.291	3000	
11	RVNInit03	N66 28.793 E025 44.105	2000	

**SUPPORT****Tanker**

Callsign	TCN	Freq	ALT	TAS
ARCO 1	22Y	319.8		
	Pos			

**AWACS**

Callsign	Freq	ALT	Pos
HEIMDALL	348.7		

## OTHER FLIGHTS

Callsign	Mission	Airframe	Freq	TCN	Grpld	Laser
Edelweiss 1	Training	4x F-16C	134.75	1/64		171X
AO		Task				
Tiger 1	Training	4x F/A-18C	261.15	1/64		155X
AO	ENR06	Task	Anti Ship			
Monster 1	Training	4x A-10C	132.15	1/64	21	161X
AO	ESR04	Task	CAS			
Nasty 6	JTAC	1x Ground	35.5	1/64		160X
AO		Task	JTAC ESR04			
Raptor 2	Training	4x F-16C	134.5	21/84		162X
AO		Task	SEAD Training SA-2			
Edelweiss 4	Training	1x F/A-18C	264.45	1/64		174X
AO		Task	Bomb Circles R93A-North			
Tiger 7	Training	3x F/A-18C	263.35	1/64		155X
AO		Task				
Rattler 2	Training	4x AH-64D	133.5	1/64		125X
AO	R92 A, B, C	Task				

## RADIO CHANNELS

#	Freq	Name
1		Flight/Squadron specific
2	282.8	Rovaniemi ATIS
3	282.5	Rovaniemi Ground
4	250.55	Rovaniemi Tower
5	320.7	Bodo ATIS
6	250.75	Bodo Tower
7	235.45	Kallax ATIS
8	250.3	Kallax Tower
9	265.0	Texaco-1   KC-135   Medium / Slow   71Y
10	319.8	Arco-1   KC-135   High / Fast   22Y
11	360.8	Shell-1   KC-135 MPRS   High / Fast   41Y
12	304.0	CVN-71 Rough Rider (RRR)   71X
13	303.0	LHA-1 Tarawa (TWA)   79X
14	247.8	S-3B Mauler-1 (MAU)  64Y
15	347.8	Loki (E-2D)
16	348.7	Heimdall (E-3A)
17	242.17	ESR02 - CAS Range Operator
18	34.7	ESR02 - JTAC Odin
19	270.5	Blue
20	270.75	Red

**RAMROD**

0	1	2	3	4	5	6	7	8	9
H	U	M	A	N	I	Z	E	R	S

**KTC 1400 C**

	0	1	2	3	4	5	6	7	8	9
A	XTLP	EHB	WRS	OK	FA	MVN	YC	IU	QG	JD
B	EYGW	TJQ	NPL	UR	HB	IOA	SC	FK	VX	MD
C	OFER	MLW	DTN	BJ	XA	PGS	HC	UQ	KY	VI
D	UXET	APR	LVQ	NG	IM	CHB	DK	SO	YF	JW
E	TENG	MUO	CQJ	DL	AB	IVR	YW	PS	XH	FK
F	TRUY	XCF	VQI	JS	MD	AGP	BO	EK	NH	LW
G	TVIK	OUW	BJE	QA	NX	FGH	LC	SR	MY	PD
H	EQMO	VUD	RNT	KC	JG	FIP	AW	YH	LB	XS
I	PBUA	MRG	XHI	KT	EL	CWO	NF	QD	SY	JV
J	YVHE	BJP	XMR	CI	LQ	UDS	ON	AT	FK	GW
K	DUEI	XLB	KNP	OH	FV	WTA	GY	SC	MR	JQ
L	BWIR	VFL	XMU	SP	GD	OCQ	HT	YE	JA	NK
M	LHRW	UEO	JIT	DY	VN	PXB	GF	QC	KM	SA
N	DOTI	MAE	XUY	LG	NW	VCH	BK	QS	FP	RJ
O	LGYV	TWO	IBU	FK	RD	MPQ	XS	NJ	AH	CE
P	KJIH	OEB	TNY	RX	GC	VMS	QA	PU	LD	WF
Q	QRFP	DEW	IOY	AJ	SU	XNH	KV	MT	BL	GC
R	COYV	MGB	NHW	TE	PK	IFX	LQ	AR	UD	JS
S	LOIM	BGH	UWK	YV	FE	TDN	CP	RA	SJ	XQ
T	NKLF	RHG	CUP	OE	VJ	XAS	TI	YW	MQ	BD
U	CNGJ	PKQ	DLM	VO	WU	YRT	IE	XB	HF	SA
V	NAOR	BFS	KVW	GD	CH	JIQ	MT	XE	YU	LP
W	EGSK	CVM	OHU	DW	YA	FXR	QI	LP	BN	JT
X	CBVW	LPF	TYN	MR	HA	EIK	XO	JD	UQ	GS
Y	EGJP	YAR	MLD	KF	NS	WBX	CQ	HT	IO	VU

**NAVAIDS**

Id	Name	Channel	Position	Elevation
BOO	Bodo	45	N67 15.838 E014 20.046	43
BNK	Banak	47	N70 03.937 E024 58.181	17
OYA	Andoya	28	N69 17.175 E016 08.658	19

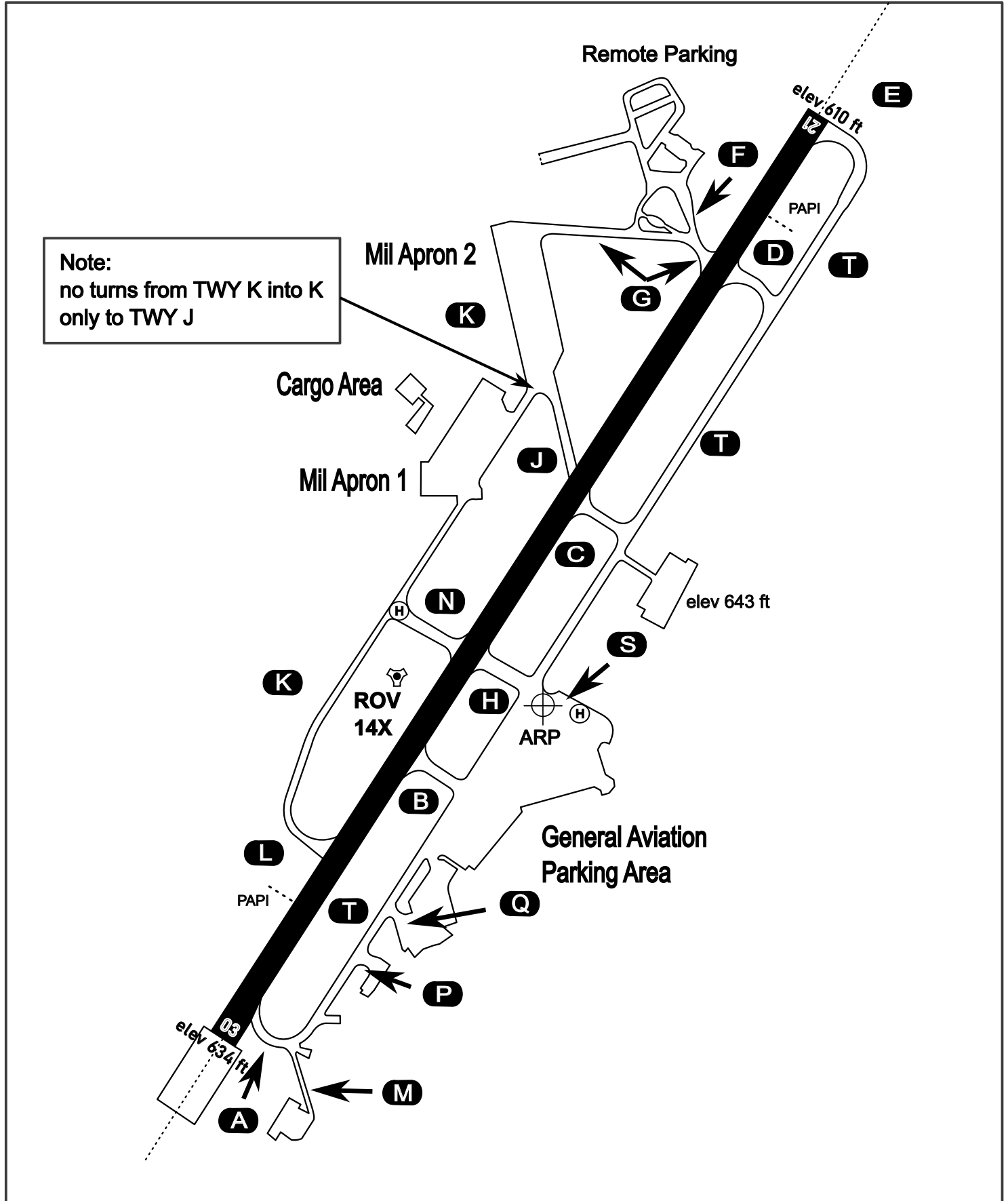
# AERODROME CHART

Rovaniemi Aerodrome

ARP N66° 33' 42" E025° 49' 51"

elev 643 ft

## ROVANIEMI, FINLAND



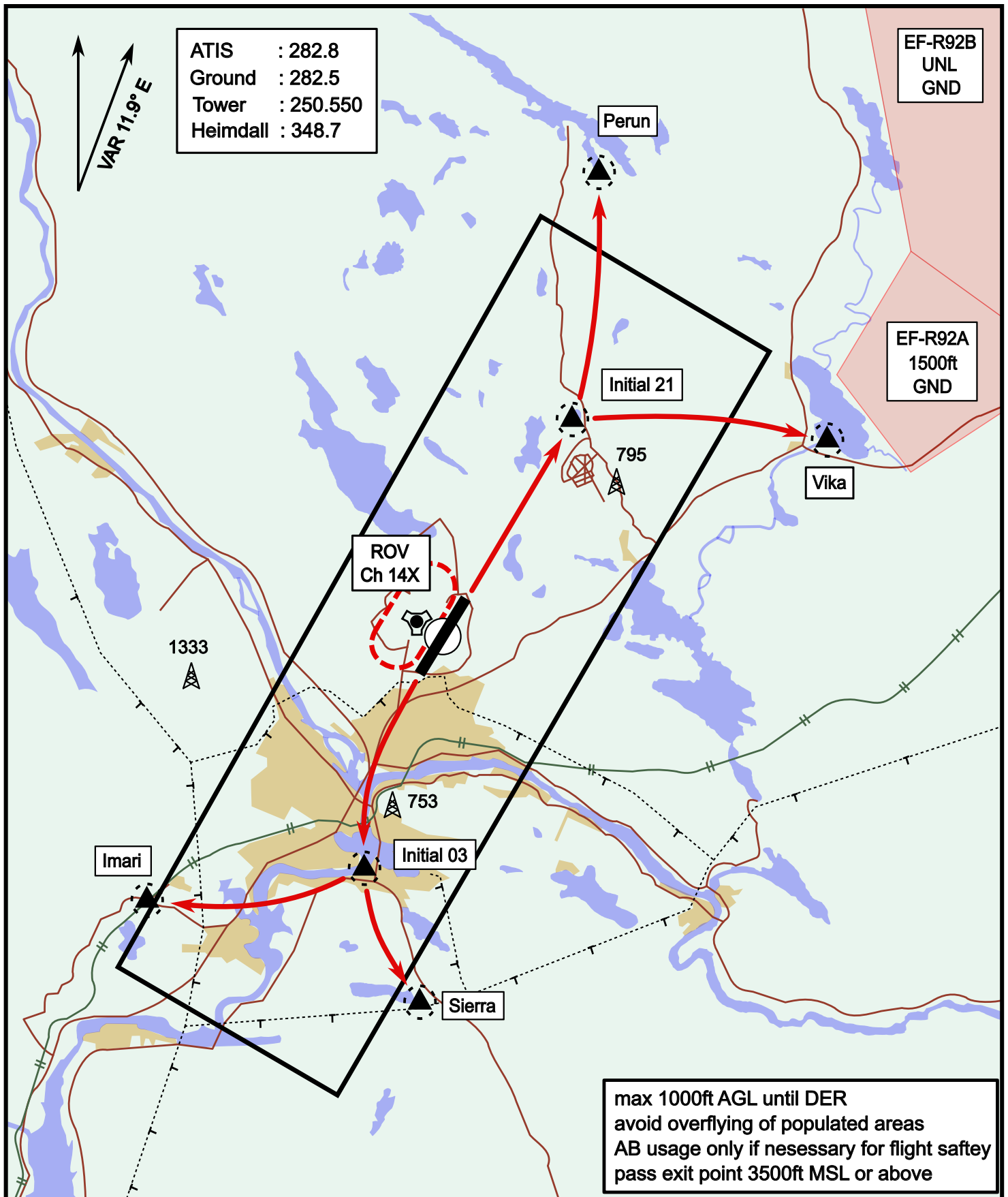
ATIS	Ground	Tower	Radar
282.800	282.500	250.550	348.700



# Visual Departure Jet

elev 643 ft

# Rovaniemi, Finland

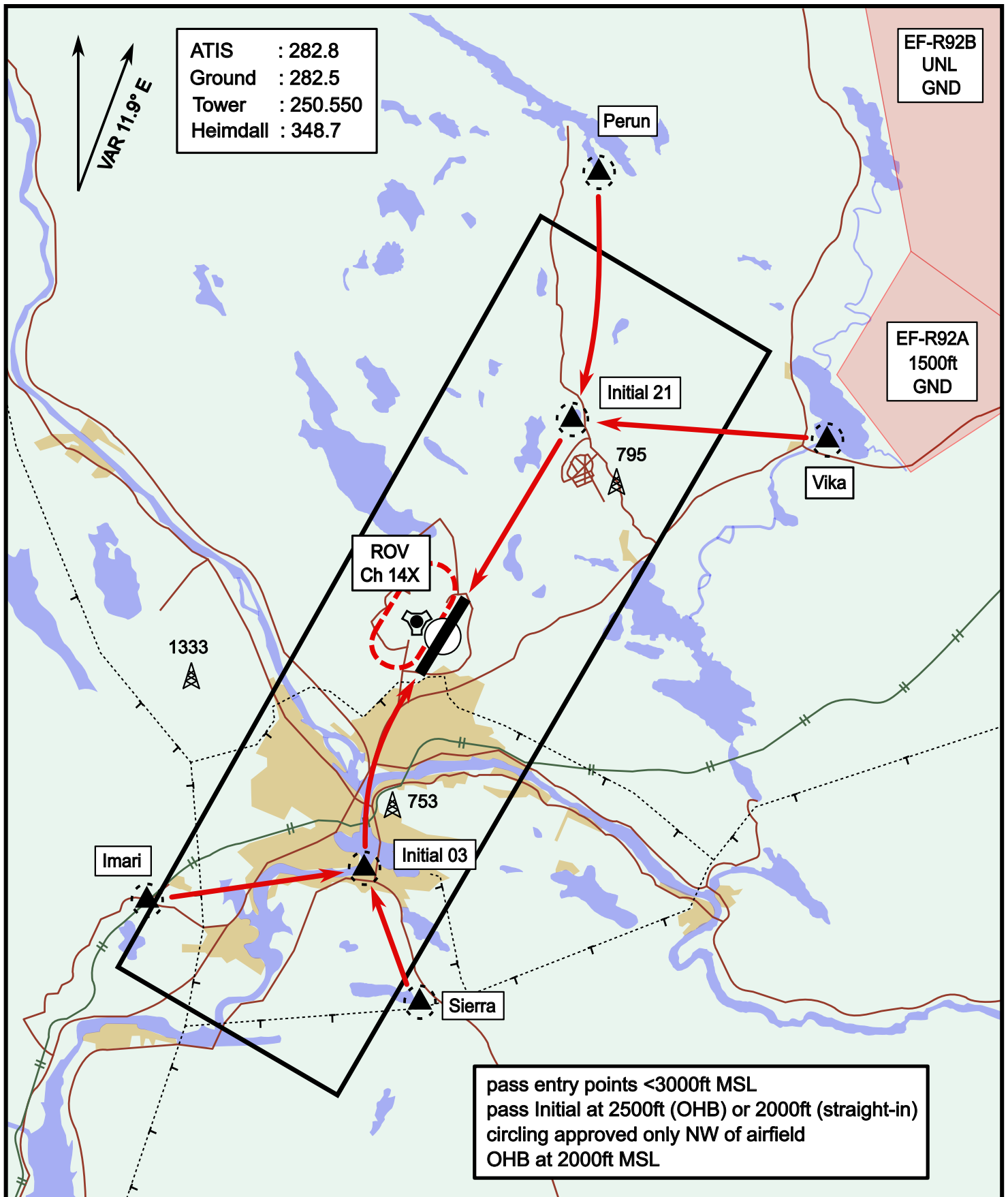


Vika	N66° 37.474 / E026° 13.557	Sierra	N66° 25.711 / E025° 46.610
Perun	N66° 44.135 / E026° 01.630	Imari	N66° 28.406 / E025° 31.291
Initial21	N66° 38.421 / E025° 58.682	Initial03	N66° 28.793 / E025° 44.105

# Visual Approach Jet

elev 643 ft

# Rovaniemi, Finland



Vika	N66° 37.474 / E026° 13.557	Sierra	N66° 25.711 / E025° 46.610
Perun	N66° 44.135 / E026° 01.630	Imari	N66° 28.406 / E025° 31.291
Initial21	N66° 38.421 / E025° 58.682	Initial03	N66° 28.793 / E025° 44.105