

MISSION DATA CARD

OPORD		Callsign		Mission		Date/Time		
3651/2025		Edelweiss 6		Training		112055FEB25		
Task						Freq		
AO						134.65		
Departure				Recovery				
VFR Departure				VFR Approach				
#	Callsign		Pilot		IFF	TCN	LSR	NET
-1	Edelweiss 6-1		Monte		1761	1Y	1661	40/01

LOADOUT

A/A						GUN	
A/G						CHF	
POD						FLR	
TKS						FUEL	

TOLD

	Takeoff	Target	Joker	Bingo	Land
FUEL	10803				

AIRBASES

	Name	TCN	ATIS	GND	TWR	RWY	Elev	ILS
Dep	Rovaniemi	14X	282.8	282.5	250.55	21	643	111.7
Arr	Rovaniemi	14X	282.8	282.5	250.55	21	643	111.7

FLIGHTPLAN

#	Name	Navaid/Coords/DME	ALT	TOT
1	IMARI	N66 28.406 E025 31.291	3000	
2	PERUN	N66 44.135 E026 01.630	3000	
3	R93A-BC-North	N67 22.646 E026 22.790	18000	
4	R93A-BC-South	N67 21.228 E026 22.468	18000	
5	RVNInit21	N66 38.642 E025 58.682	2500	
6	RVNInit03	N66 28.793 E025 44.105	2500	

SUPPORT**Tanker**

Callsign	TCN	Freq	ALT	TAS
SHELL 1	41Y	360.8		
Pos				

OTHER FLIGHTS

Callsign	Mission	Airframe	Freq	TCN	GrpId	Laser
Rattler 1	Training	2x AH-64D	133.5	1/64		125X
AO	R92ABC	Task				

RADIO CHANNELS

#	Freq	Name
1		Flight/Squadron specific
2	282.8	Rovaniemi ATIS
3	282.5	Rovaniemi Ground
4	250.55	Rovaniemi Tower
5	320.7	Bodo ATIS
6	250.75	Bodo Tower
7	235.45	Kallax ATIS
8	250.3	Kallax Tower
9	265.0	Texaco-1 KC-135 Medium / Slow 71Y
10	319.8	Arco-1 KC-135 High / Fast 22Y
11	360.8	Shell-1 KC-135 MPRS High / Fast 41Y
12	304.0	CVN-71 Rough Rider (RRR) 71X
13	303.0	LHA-1 Tarawa (TWA) 79X
14	247.8	S-3B Mauler-1 (MAU) 64Y
15	347.8	Loki (E-2D)
16	348.7	Heimdall (E-3A)
17	242.17	ESR02 - CAS Range Operator
18	34.7	ESR02 - JTAC Odin
19	270.5	Blue
20	270.75	Red

RAMROD

0	1	2	3	4	5	6	7	8	9
P	A	T	H	O	G	E	N	I	C

KTC 1400 C

	0	1	2	3	4	5	6	7	8	9
A	BIFW	PSM	HLE	TN	UO	KRA	QD	VC	YG	XJ
B	YTNP	LKI	OVB	CR	DW	HMU	QJ	EF	AG	XS
C	RYKO	LEP	MTS	AN	BQ	FUH	XV	GD	JI	CW
D	MCJP	DUN	ESX	GF	KI	OBT	AV	HL	QW	YR
E	BQOT	HAL	NWX	JY	CF	VIP	GK	ER	DM	US
F	PGIO	UVH	WXQ	EJ	SM	RNA	BC	TL	YD	KF
G	KSXO	TIV	NBF	HM	YP	AUE	CR	WG	QJ	DL
H	FKPM	RDN	CGQ	OA	YW	SIB	JU	TV	LX	EH
I	OJTU	FRD	WHE	BN	AQ	VPK	LG	MS	XI	CY
J	EQVS	AJN	LFU	WM	GR	HDT	OY	XP	IC	KB
K	XGYQ	EVC	NOB	MU	JT	ADH	SI	WK	RL	PF
L	SGBJ	YHM	WVO	KF	NC	PID	LA	QE	XR	TU
M	BOEM	FLX	WHU	RT	SN	YAI	GV	PC	QK	DJ
N	AORG	BVC	QMX	KY	HJ	TEW	SD	IF	NP	UL
O	QKXS	YBW	CDT	MF	LH	IPG	VE	AO	UN	RJ
P	UMJH	ESC	KLX	OV	GA	PQN	YT	WD	RF	IB
Q	FVKR	WQS	EXJ	TC	ML	UIB	GA	YH	DP	NO
R	NCFI	WAL	SKO	XT	PJ	UHG	BD	QR	MV	EY
S	VSHL	DAC	PRG	XI	BT	UMO	EK	YQ	WF	NJ
T	XLBE	DTN	OCW	QV	MA	UYR	PH	KG	FJ	IS
U	TOCE	SVH	KXU	MB	QA	YJN	IP	RW	LD	FG
V	WUFA	BJN	EHS	RV	GT	QOL	KY	CX	PI	MD
W	DLRQ	UPM	VFW	EA	HO	XJB	YK	CT	NG	SI
X	XRIT	VGA	YWJ	HF	LU	DCQ	EP	BN	SK	MO
Y	VYWA	LJR	QPS	NE	GU	DFX	TH	IK	CO	MB

NAVAIDS

Id	Name	Channel	Position	Elevation
BOO	Bodo	45	N67 15.838 E014 20.046	43
BNK	Banak	47	N70 03.937 E024 58.181	17
OYA	Andoya	28	N69 17.175 E016 08.658	19

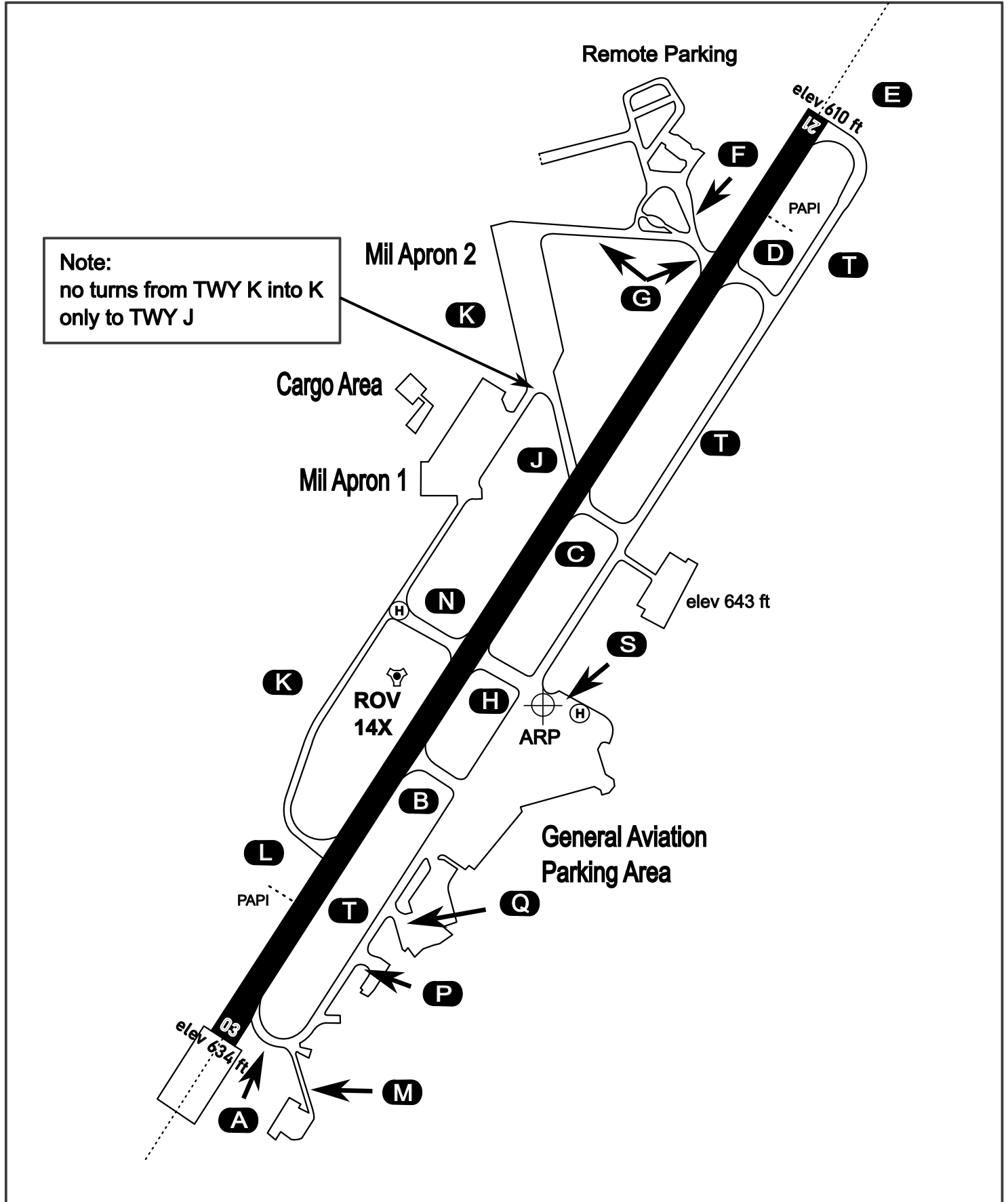
AERODROME CHART

Rovaniemi Aerodrome

ARP N66° 33' 42" E025° 49' 51"

elev 643 ft

ROVANIEMI, FINLAND

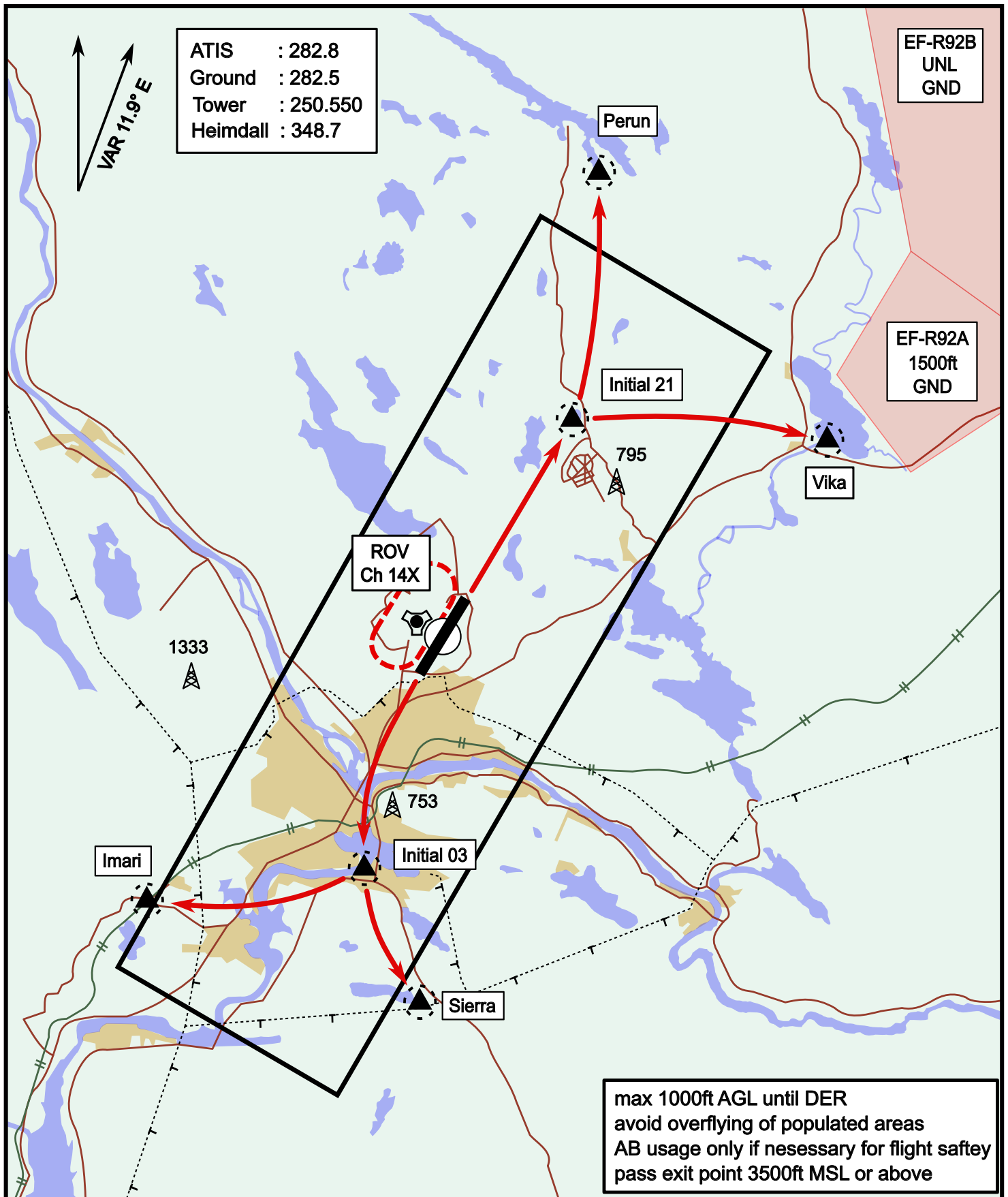


ATIS	Ground	Tower	Radar
282.800	282.500	250.550	348.700

Visual Departure Jet

elev 643 ft

Rovaniemi, Finland

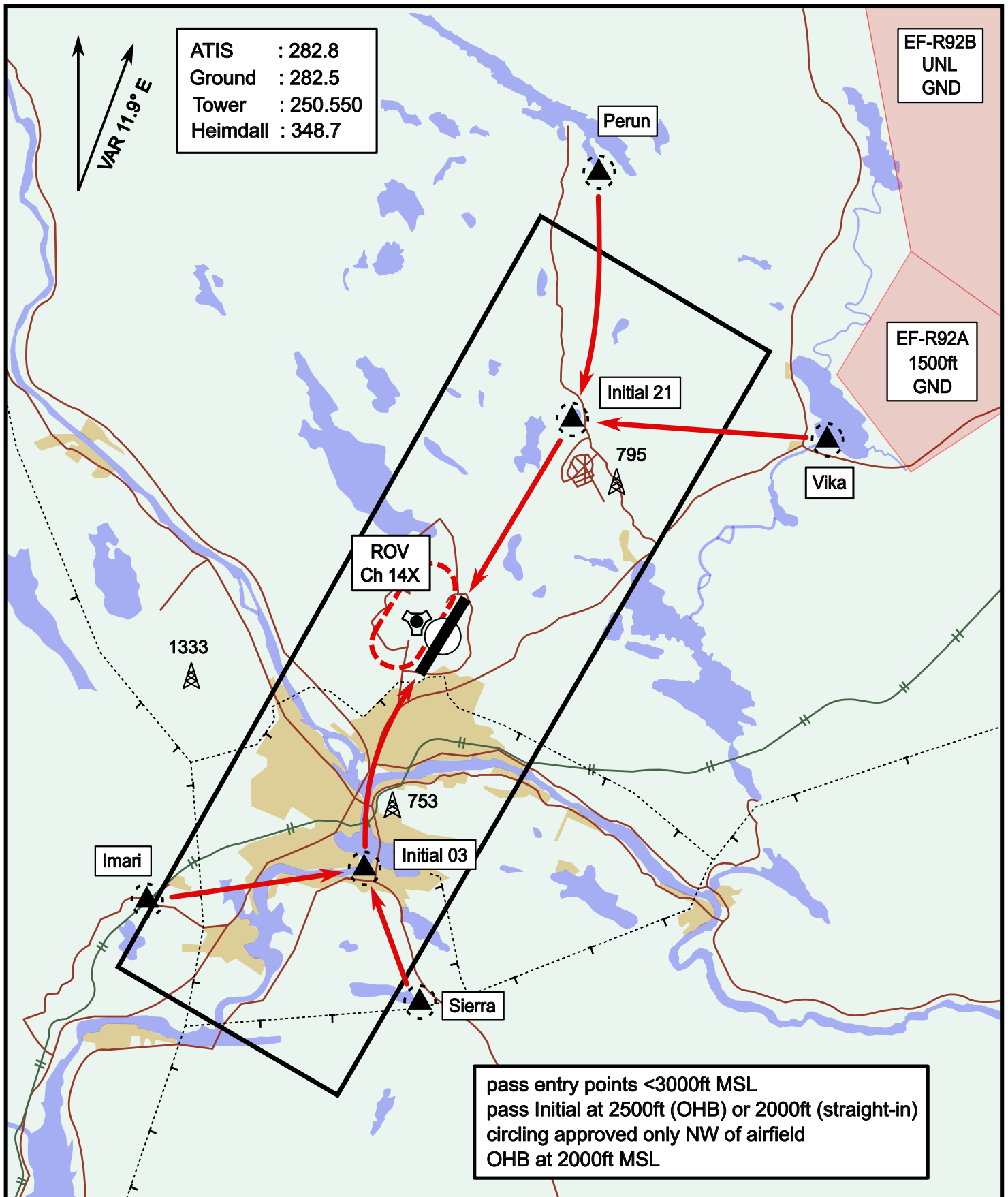


Vika	N66° 37.474 / E026° 13.557	Sierra	N66° 25.711 / E025° 46.610
Perun	N66° 44.135 / E026° 01.630	Imari	N66° 28.406 / E025° 31.291
Initial21	N66° 38.421 / E025° 58.682	Initial03	N66° 28.793 / E025° 44.105

Visual Approach Jet

elev 643 ft

Rovaniemi, Finland



Vika	N66° 37.474 / E026° 13.557	Sierra	N66° 25.711 / E025° 46.610
Perun	N66° 44.135 / E026° 01.630	Imari	N66° 28.406 / E025° 31.291
Initial21	N66° 38.421 / E025° 58.682	Initial03	N66° 28.793 / E025° 44.105