

MISSION DATA CARD

| | | | | | | | | |
|----------------|-------------|-----------|-------|----------------|------|-------------|------|-----|
| OPORD | | Callsign | | Mission | | Date/Time | | |
| 3649/2025 | | Rattler 1 | | Training | | 111900FEB25 | | |
| Task | | | | | | Freq | | |
| AO | R92ABC | | | | | 133.5 | | |
| Departure | | | | Recovery | | | | |
| VFR Helicopter | | | | VFR Helicopter | | | | |
| # | Callsign | | Pilot | | IFF | TCN | LSR | NET |
| -1 | Rattler 1-1 | | Laud | | 4611 | 1Y | 1251 | |

LOADOUT

| | | | | | | | |
|-----|--|--|--|--|--|------|--|
| A/A | | | | | | GUN | |
| A/G | | | | | | CHF | |
| POD | | | | | | FLR | |
| TKS | | | | | | FUEL | |

TOLD

| | | | | | |
|------|---------|--------|-------|-------|------|
| | Takeoff | Target | Joker | Bingo | Land |
| FUEL | 2513 | | | | |

AIRBASES

| | | | | | | | | |
|-----|-----------|-----|-------|-------|--------|-----|------|-------|
| | Name | TCN | ATIS | GND | TWR | RWY | Elev | ILS |
| Dep | Rovaniemi | 14X | 282.8 | 282.5 | 250.55 | 21 | 643 | 111.7 |
| Arr | Rovaniemi | 14X | 282.8 | 282.5 | 250.55 | 21 | 643 | 111.7 |

FLIGHTPLAN

| # | Name | Navaid/Coords/DME | ALT | TOT |
|---|------------------|------------------------|-----|-----|
| 1 | VIKA | N66 37.474 E026 13.557 | | |
| 2 | R92A-FARP-KIMI | N66 37.800 E026 22.717 | | |
| 3 | R92B-ENTRY-SOUTH | N66 39.117 E026 25.200 | | |
| 4 | R92B-RP EAST | N66 44.217 E026 26.250 | | |
| 5 | R92B-BP HUNTER | N66 47.250 E026 28.283 | | |

COMMS

| Radio | Usage |
|-------|------------------------|
| 1 | 133.5 |
| 2 | 282.5 / 250.55 / 348.7 |
| 3 | 35.35 |
| 4 | 30.00 |

SUPPORT**AWACS**

Callsign

Freq

ALT

Pos

HEIMDALL

348.7

OTHER FLIGHTS

| Callsign | Mission | Airframe | Freq | TCN | Grpld | Laser |
|-------------|----------|------------|--------|------|-------|-------|
| Edelweiss 6 | Training | 2x F/A-18C | 134.65 | 1/64 | 40 | 166X |
| AO | | Task | | | | |

RADIO CHANNELS

| # | Freq | Name |
|----|--------|---|
| 1 | | Flight/Squadron specific |
| 2 | 282.8 | Rovaniemi ATIS |
| 3 | 282.5 | Rovaniemi Ground |
| 4 | 250.55 | Rovaniemi Tower |
| 5 | 320.7 | Bodo ATIS |
| 6 | 250.75 | Bodo Tower |
| 7 | 235.45 | Kallax ATIS |
| 8 | 250.3 | Kallax Tower |
| 9 | 265.0 | Texaco-1 KC-135 Medium / Slow 71Y |
| 10 | 319.8 | Arco-1 KC-135 High / Fast 22Y |
| 11 | 360.8 | Shell-1 KC-135 MPRS High / Fast 41Y |
| 12 | 304.0 | CVN-71 Rough Rider (RRR) 71X |
| 13 | 303.0 | LHA-1 Tarawa (TWA) 79X |
| 14 | 247.8 | S-3B Mauler-1 (MAU) 64Y |
| 15 | 347.8 | Loki (E-2D) |
| 16 | 348.7 | Heimdall (E-3A) |
| 17 | 242.17 | ESR02 - CAS Range Operator |
| 18 | 34.7 | ESR02 - JTAC Odin |
| 19 | 270.5 | Blue |
| 20 | 270.75 | Red |

RAMROD

| | | | | | | | | | |
|---|---|---|---|---|---|---|---|---|---|
| 0 | 1 | 2 | 3 | 4 | 5 | 6 | 7 | 8 | 9 |
| P | A | T | H | O | G | E | N | I | C |

KTC 1400 C

| | 0 | 1 | 2 | 3 | 4 | 5 | 6 | 7 | 8 | 9 |
|---|------|-----|-----|----|----|-----|----|----|----|----|
| A | BIFW | PSM | HLE | TN | UO | KRA | QD | VC | YG | XJ |
| B | YTNP | LKI | OVB | CR | DW | HMU | QJ | EF | AG | XS |
| C | RYKO | LEP | MTS | AN | BQ | FUH | XV | GD | JI | CW |
| D | MCJP | DUN | ESX | GF | KI | OBT | AV | HL | QW | YR |
| E | BQOT | HAL | NWX | JY | CF | VIP | GK | ER | DM | US |
| F | PGIO | UVH | WXQ | EJ | SM | RNA | BC | TL | YD | KF |
| G | KSXO | TIV | NBF | HM | YP | AUE | CR | WG | QJ | DL |
| H | FKPM | RDN | CGQ | OA | YW | SIB | JU | TV | LX | EH |
| I | OJTU | FRD | WHE | BN | AQ | VPK | LG | MS | XI | CY |
| J | EQVS | AJN | LFU | WM | GR | HDT | OY | XP | IC | KB |
| K | XGYQ | EVC | NOB | MU | JT | ADH | SI | WK | RL | PF |
| L | SGBJ | YHM | WVO | KF | NC | PID | LA | QE | XR | TU |
| M | BOEM | FLX | WHU | RT | SN | YAI | GV | PC | QK | DJ |
| N | AORG | BVC | QMX | KY | HJ | TEW | SD | IF | NP | UL |
| O | QKXS | YBW | CDT | MF | LH | IPG | VE | AO | UN | RJ |
| P | UMJH | ESC | KLX | OV | GA | PQN | YT | WD | RF | IB |
| Q | FVKR | WQS | EXJ | TC | ML | UIB | GA | YH | DP | NO |
| R | NCFI | WAL | SKO | XT | PJ | UHG | BD | QR | MV | EY |
| S | VSHL | DAC | PRG | XI | BT | UMO | EK | YQ | WF | NJ |
| T | XLBE | DTN | OCW | QV | MA | UYR | PH | KG | FJ | IS |
| U | TOCE | SVH | KXU | MB | QA | YJN | IP | RW | LD | FG |
| V | WUFA | BJN | EHS | RV | GT | QOL | KY | CX | PI | MD |
| W | DLRQ | UPM | VFW | EA | HO | XJB | YK | CT | NG | SI |
| X | XRIT | VGA | YWJ | HF | LU | DCQ | EP | BN | SK | MO |
| Y | VYWA | LJR | QPS | NE | GU | DFX | TH | IK | CO | MB |

NAVAIDS

| Id | Name | Channel | Position | Elevation |
|-----|--------|---------|------------------------|-----------|
| BOO | Bodo | 45 | N67 15.838 E014 20.046 | 43 |
| BNK | Banak | 47 | N70 03.937 E024 58.181 | 17 |
| OYA | Andoya | 28 | N69 17.175 E016 08.658 | 19 |

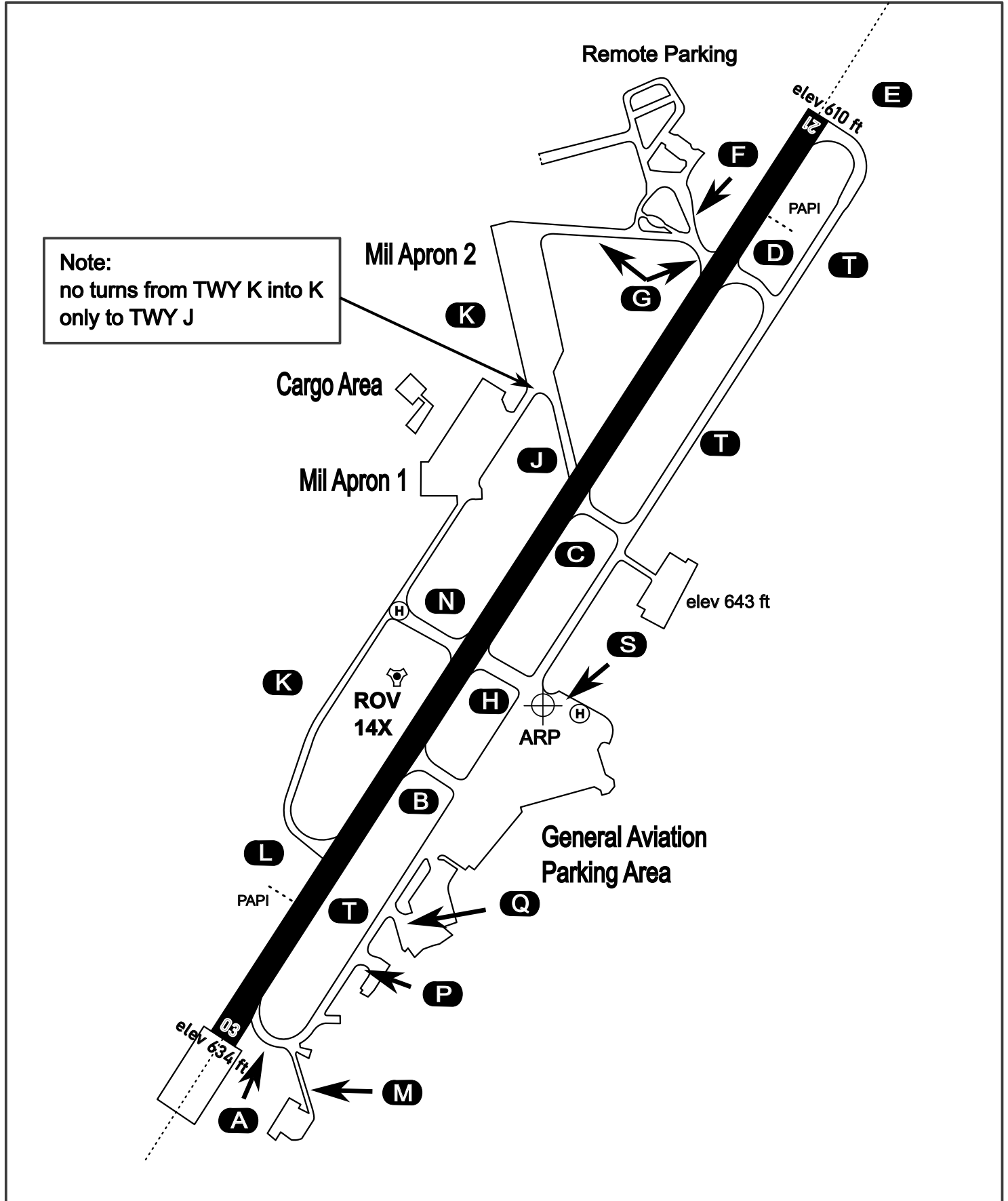
AERODROME CHART

Rovaniemi Aerodrome

ARP N66° 33' 42" E025° 49' 51"

elev 643 ft

ROVANIEMI, FINLAND

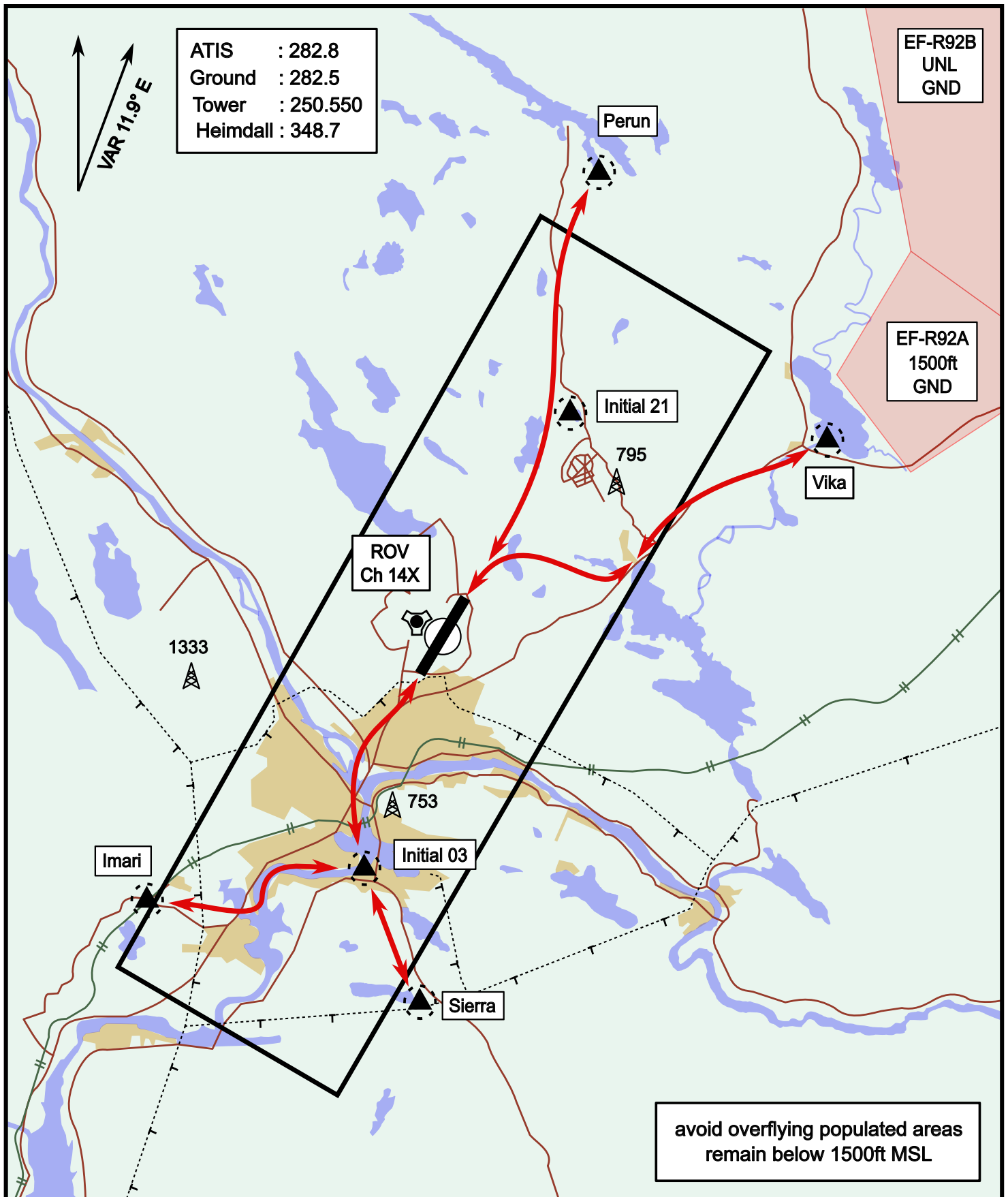


| ATIS | Ground | Tower | Radar |
|---------|---------|---------|---------|
| 282.800 | 282.500 | 250.550 | 348.700 |

Helicopter Routing

elev 643 ft

Rovaniemi, Finland

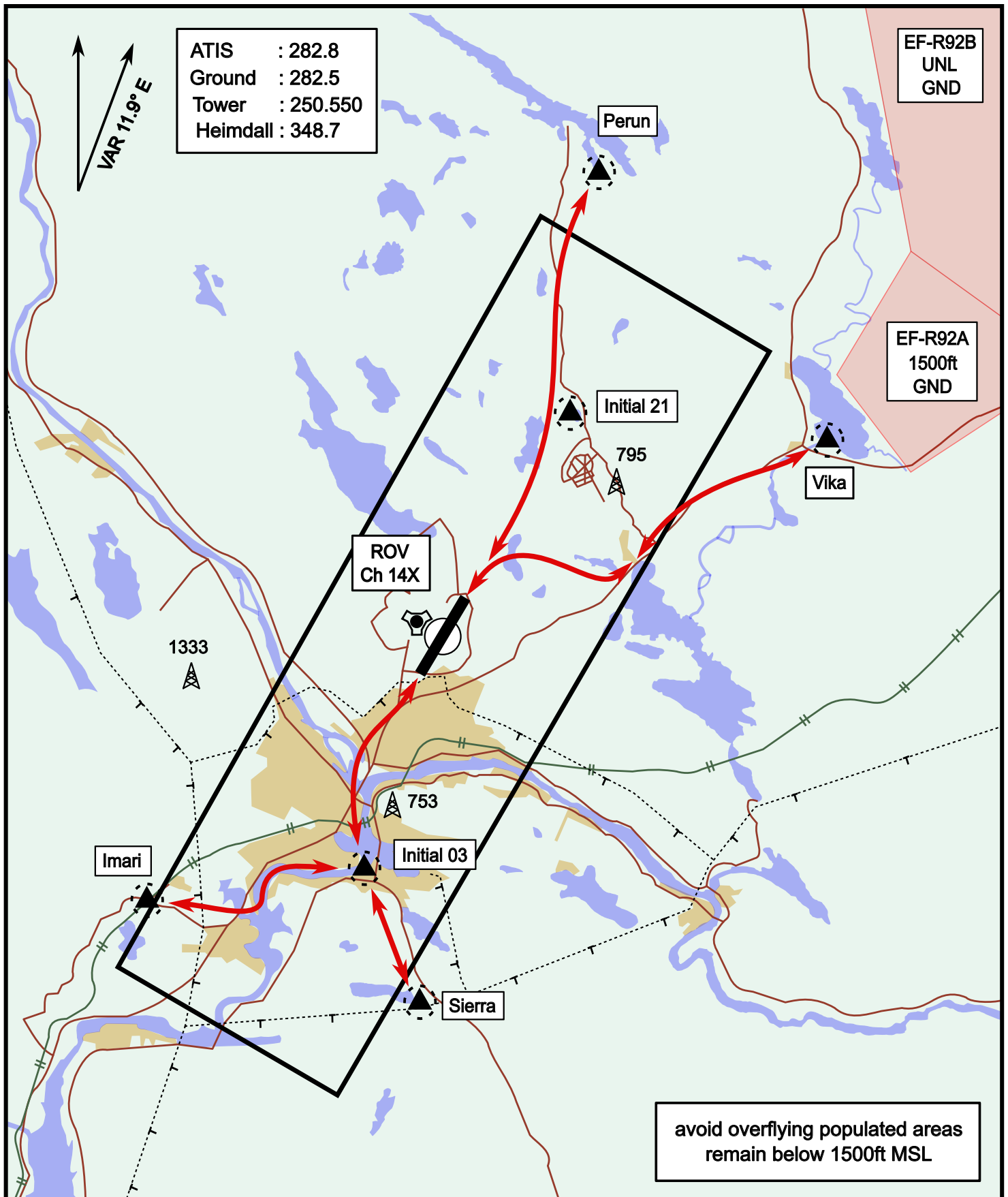


| | | | |
|-----------|----------------------------|-----------|----------------------------|
| Vika | N66° 37.474 / E026° 13.557 | Sierra | N66° 25.711 / E025° 46.610 |
| Perun | N66° 44.135 / E026° 01.630 | Imari | N66° 28.406 / E025° 31.291 |
| Initial21 | N66° 38.421 / E025° 58.682 | Initial03 | N66° 28.793 / E025° 44.105 |

Helicopter Routing

elev 643 ft

Rovaniemi, Finland



| | | | |
|-----------|----------------------------|-----------|----------------------------|
| Vika | N66° 37.474 / E026° 13.557 | Sierra | N66° 25.711 / E025° 46.610 |
| Perun | N66° 44.135 / E026° 01.630 | Imari | N66° 28.406 / E025° 31.291 |
| Initial21 | N66° 38.421 / E025° 58.682 | Initial03 | N66° 28.793 / E025° 44.105 |