

MISSION DATA CARD

OPORD		Callsign		Mission		Date/Time		
3648/2025		Edelweiss 1		Training		132000FEB25		
Task						Freq		
AO						134.75		
Departure				Recovery				
VFR Depature				VFR Approach				
#	Callsign		Pilot		IFF	TCN	LSR	NET
-1	Edelweiss 1-1		Meteor		1711	1Y	1711	

LOADOUT

A/A						GUN	100% HEI-T
A/G						CHF	60
POD						FLR	60
TKS	FT300					FUEL	100%

TOLD

	Takeoff	Target	Joker	Bingo	Land
FUEL	9166				

AIRBASES

	Name	TCN	ATIS	GND	TWR	RWY	Elev	ILS
Dep	Rovaniemi	14X	282.8	282.5	250.55	21	643	111.7
Arr	Rovaniemi	14X	282.8	282.5	250.55	21	643	111.7
Div	Kemi Tornio	106X			250.3	36	62	110.9

FLIGHTPLAN

#	Name	Navaid/Coords/DME	ALT	TOT
1	PERUN	N66 44 08.120 E026 01 37.812	3000	
2	VIKA	N66 37 28.469 E026 13 33.460	3000	
3	SIERRA	N66 25 42.681 E025 46 36.642	3000	
4	IMARI	N66 28 24.377 E025 31 17.480	3000	
5	IBSAN	N66 42 30.019 E025 01 04.824	3000	
6	NEMGU	N66 20 24.029 E024 41 39.025	3000	
7	6	N65 56 24.116 E024 36 10.547	3000	
8	Kemi Tornio	N65 46 53.344 E024 34 56.221	3000	
9	8	N65 37 09.287 E024 33 57.190	3000	
10	RENVİ	N66 04 33.600 E025 31 54.003	3000	
11	SIERRA	N66 25.711 E025 46.610		
12	RVNInit03	N66 28.793 E025 44.105		
13	Rovaniemi	N66 33 53.445 E025 49 49.755	2000	

OTHER FLIGHTS

Callsign	Mission	Airframe	Freq	TCN	Grpld	Laser
Tiger 1	Training	4x F/A-18C	261.15	1/64		155X
AO	ENR06	Task	Anti Ship			
Raptor 1	Training	4x F-16C	134.0	1/64		162X
AO		Task	SEAD Training SA-2			
Monster 1	Training	4x A-10C	132.15	1/64	21	161X
AO	ESR04	Task	CAS			
Nasty 6	JTAC	1x Ground	35.5	1/64		160X
AO		Task	JTAC ESR04			
Raptor 2	Training	4x F-16C	134.5	21/84		162X
AO		Task	SEAD Training SA-2			
Edelweiss 4	Training	1x F/A-18C	264.45	1/64		174X
AO		Task	Bomb Circles R93A-North			
Tiger 7	Training	3x F/A-18C	263.35	1/64		155X
AO		Task				
Rattler 2	Training	4x AH-64D	133.5	1/64		125X
AO	R92 A, B, C	Task				

RADIO CHANNELS

#	Freq	Name
1		Flight/Squadron specific
2	282.8	Rovaniemi ATIS
3	282.5	Rovaniemi Ground
4	250.55	Rovaniemi Tower
5	320.7	Bodo ATIS
6	250.75	Bodo Tower
7	235.45	Kallax ATIS
8	250.3	Kallax Tower
9	265.0	Texaco-1 KC-135 Medium / Slow 71Y
10	319.8	Arco-1 KC-135 High / Fast 22Y
11	360.8	Shell-1 KC-135 MPRS High / Fast 41Y
12	304.0	CVN-71 Rough Rider (RRR) 71X
13	303.0	LHA-1 Tarawa (TWA) 79X
14	247.8	S-3B Mauler-1 (MAU) 64Y
15	347.8	Loki (E-2D)
16	348.7	Heimdall (E-3A)
17	242.17	ESR02 - CAS Range Operator
18	34.7	ESR02 - JTAC Odin
19	270.5	Blue
20	270.75	Red

RAMROD

0	1	2	3	4	5	6	7	8	9
H	U	M	A	N	I	Z	E	R	S

KTC 1400 C

	0	1	2	3	4	5	6	7	8	9
A	XTLP	EHB	WRS	OK	FA	MVN	YC	IU	QG	JD
B	EYGW	TJQ	NPL	UR	HB	IOA	SC	FK	VX	MD
C	OFER	MLW	DTN	BJ	XA	PGS	HC	UQ	KY	VI
D	UXET	APR	LVQ	NG	IM	CHB	DK	SO	YF	JW
E	TENG	MUO	CQJ	DL	AB	IVR	YW	PS	XH	FK
F	TRUY	XCF	VQI	JS	MD	AGP	BO	EK	NH	LW
G	TVIK	OUW	BJE	QA	NX	FGH	LC	SR	MY	PD
H	EQMO	VUD	RNT	KC	JG	FIP	AW	YH	LB	XS
I	PBUA	MRG	XHI	KT	EL	CWO	NF	QD	SY	JV
J	YVHE	BJP	XMR	CI	LQ	UDS	ON	AT	FK	GW
K	DUEI	XLB	KNP	OH	FV	WTA	GY	SC	MR	JQ
L	BWIR	VFL	XMU	SP	GD	OCQ	HT	YE	JA	NK
M	LHRW	UEO	JIT	DY	VN	PXB	GF	QC	KM	SA
N	DOTI	MAE	XUY	LG	NW	VCH	BK	QS	FP	RJ
O	LGYV	TWO	IBU	FK	RD	MPQ	XS	NJ	AH	CE
P	KJIH	OEB	TNY	RX	GC	VMS	QA	PU	LD	WF
Q	QRFP	DEW	IOY	AJ	SU	XNH	KV	MT	BL	GC
R	COYV	MGB	NHW	TE	PK	IFX	LQ	AR	UD	JS
S	LOIM	BGH	UWK	YV	FE	TDN	CP	RA	SJ	XQ
T	NKLF	RHG	CUP	OE	VJ	XAS	TI	YW	MQ	BD
U	CNGJ	PKQ	DLM	VO	WU	YRT	IE	XB	HF	SA
V	NAOR	BFS	KVW	GD	CH	JIQ	MT	XE	YU	LP
W	EGSK	CVM	OHU	DW	YA	FXR	QI	LP	BN	JT
X	CBVW	LPF	TYN	MR	HA	EIK	XO	JD	UQ	GS
Y	EGJP	YAR	MLD	KF	NS	WBX	CQ	HT	IO	VU

NAVAIDS

Id	Name	Channel	Position	Elevation
BOO	Bodo	45	N67 15.838 E014 20.046	43
BNK	Banak	47	N70 03.937 E024 58.181	17
OYA	Andoya	28	N69 17.175 E016 08.658	19

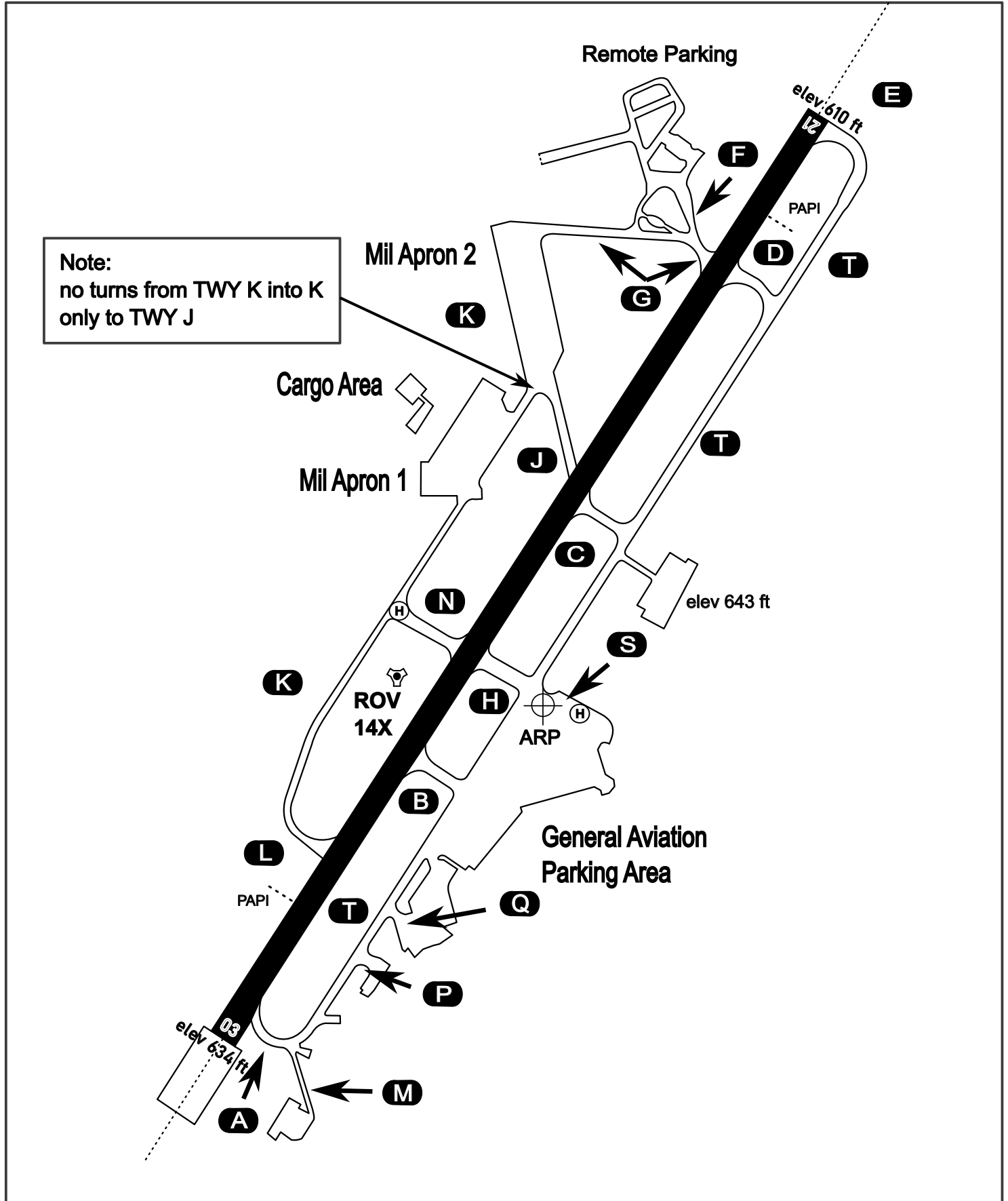
AERODROME CHART

Rovaniemi Aerodrome

ARP N66° 33' 42" E025° 49' 51"

elev 643 ft

ROVANIEMI, FINLAND

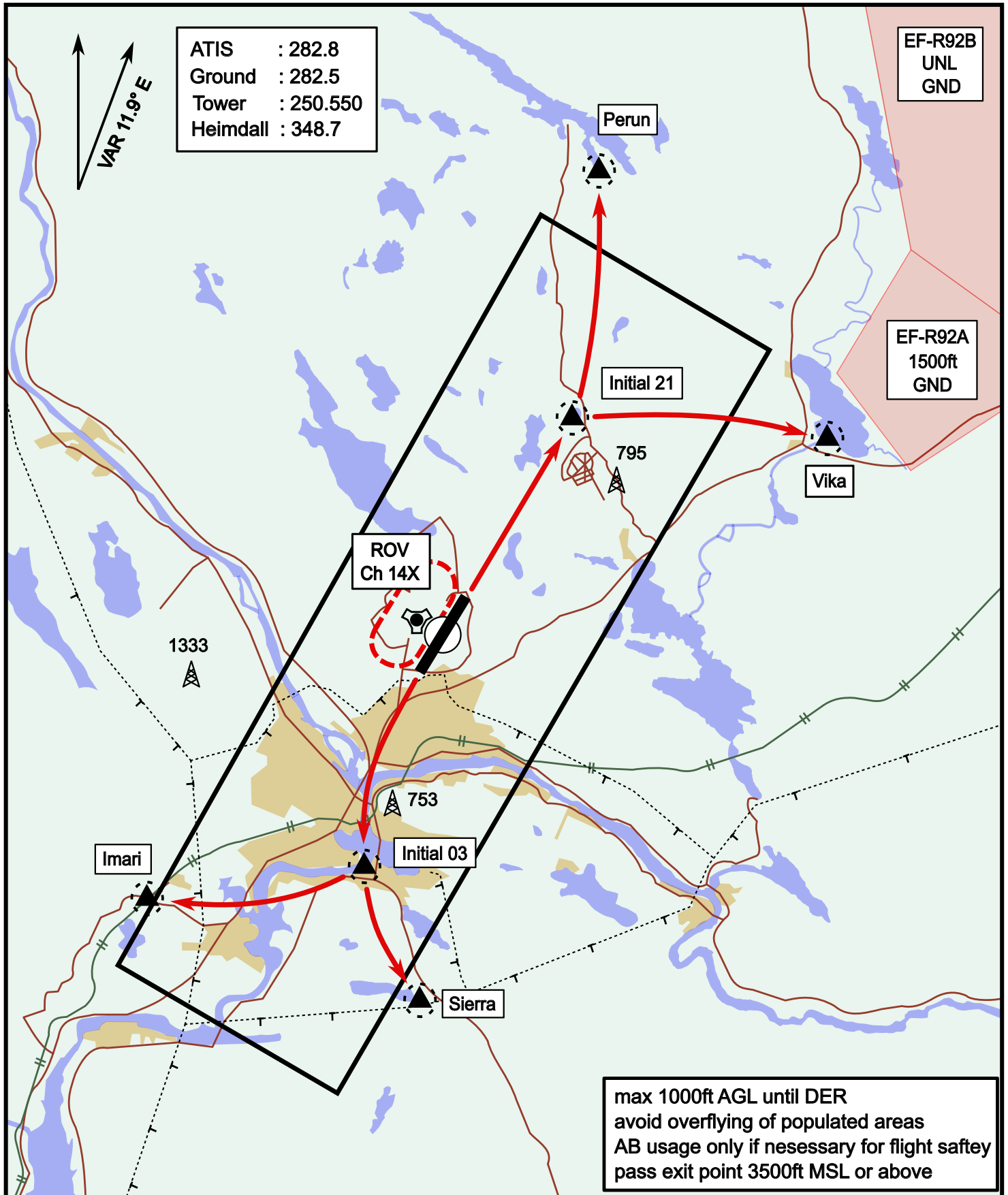


ATIS	Ground	Tower	Radar
282.800	282.500	250.550	348.700

Visual Departure Jet

elev 643 ft

Rovaniemi, Finland

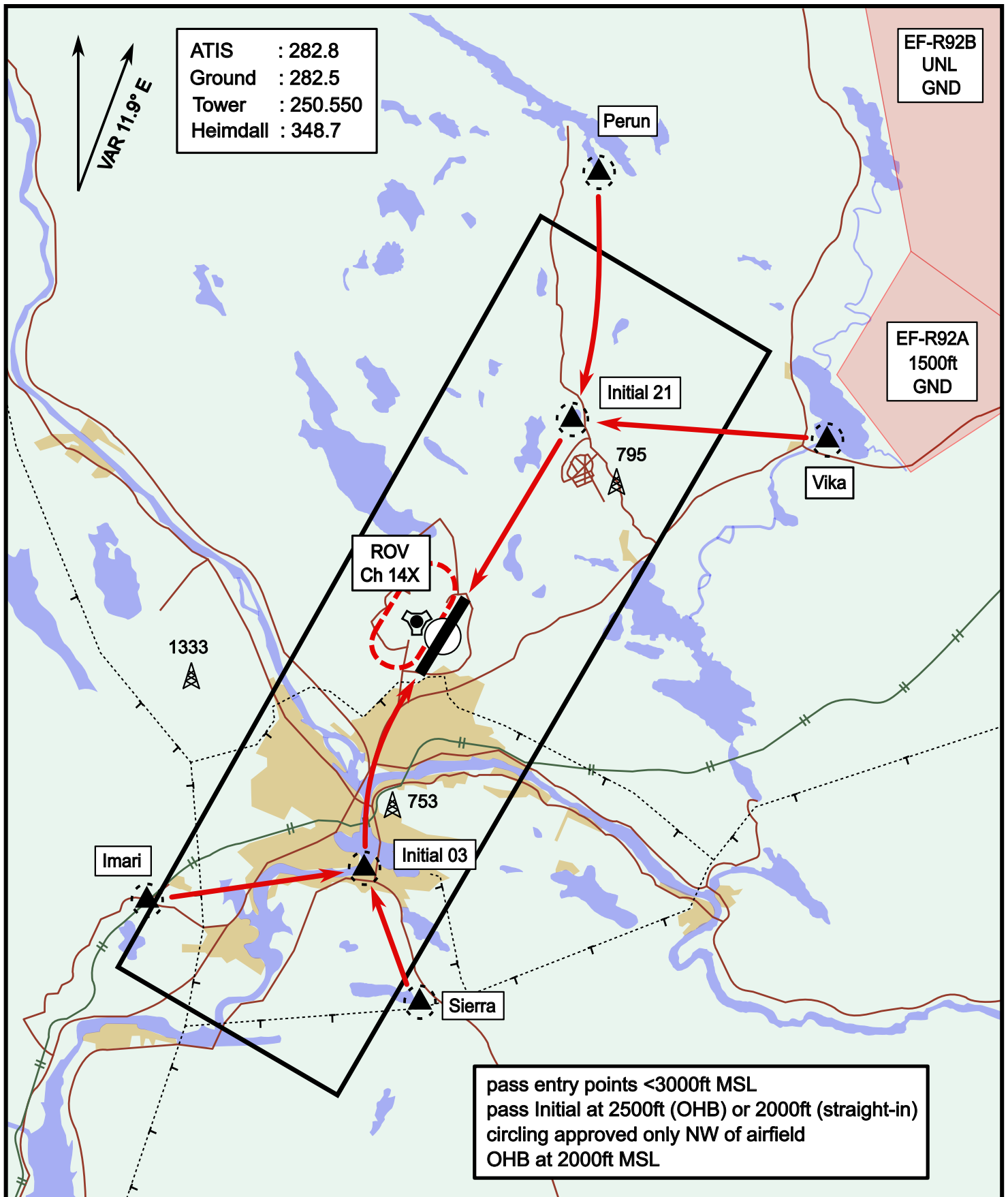


Vika	N66° 37.474 / E026° 13.557	Sierra	N66° 25.711 / E025° 46.610
Perun	N66° 44.135 / E026° 01.630	Imari	N66° 28.406 / E025° 31.291
Initial21	N66° 38.421 / E025° 58.682	Initial03	N66° 28.793 / E025° 44.105

Visual Approach Jet

elev 643 ft

Rovaniemi, Finland



Vika	N66° 37.474 / E026° 13.557	Sierra	N66° 25.711 / E025° 46.610
Perun	N66° 44.135 / E026° 01.630	Imari	N66° 28.406 / E025° 31.291
Initial21	N66° 38.421 / E025° 58.682	Initial03	N66° 28.793 / E025° 44.105

NOT AVAILABLE

NOT AVAILABLE