

**MISSION DATA CARD**

OPORD		Callsign		Mission		Date/Time		
3642/2025		Nazgul 7		Training		172030FEB25		
Task	FAM-Flight					Freq		
AO						262.45		
Departure				Recovery				
VFR Departure				VFR Approach				
#	Callsign		Pilot		IFF	TCN	LSR	NET
-1	Nazgul 7-1		Tank		1161	1Y	1161	02/01

**LOADOUT**

A/A	2xA120C, 2xA9M				GUN	100% SAPHEI	
A/G					CHF	120	
POD	TGT, NAV				FLR	60	
TKS	2xFT610				FUEL	100%	

**TOLD**

	Takeoff	Target	Joker	Bingo	Land
FUEL	30518			4000	

**AIRBASES**

	Name	TCN	ATIS	GND	TWR	RWY	Elev	ILS
Dep	Rovaniemi	14X	282.8	282.5	250.55	21	643	111.7
Arr	Rovaniemi	14X	282.8	282.5	250.55	21	643	111.7
Div	Kallax		235.45		250.3	32	66	109.9

**FLIGHTPLAN**

#	Name	Navaid/Coords/DME	ALT	TOT
1	PERUN	N66 44 08.120 E026 01 37.812	3000	
2	VIKA	N66 37 28.469 E026 13 33.460	3000	
3	SIERRA	N66 25 42.681 E025 46 36.642	3000	
4	IMARI	N66 28 24.377 E025 31 17.480	3000	
5	Kemi Tornio	N65 46 53.344 E024 34 56.221	25000	
6	Kallax	N65 32 37.629 E022 07 18.722	25000	
7	9	N65 52 57.581 E022 19 46.341	25000	
8	10	N66 35 08.832 E022 35 50.014	25000	
9	ITVAV	N66 44 37.836 E019 56 45.628	25000	
10	SEPJA	N67 27 18.033 E021 12 04.808	25000	
11	13	N67 47 45.639 E021 17 37.061	25000	
12	14	N68 31 08.530 E022 01 45.975	25000	
13	IBSAN	N66 42 30.019 E025 01 04.824	10000	
14	Rovaniemi	N66 33 53.445 E025 49 49.755	2000	

**COMMS**

Radio	Usage
1	2, 3, 4, 16, 4, 3
2	262.45

## NOTES

AWACS = Heimdall

**SUPPORT****Tanker**

Callsign	TCN	Freq	ALT	TAS
ARCO 1	22Y	319.8		
	Pos			

**AWACS**

Callsign	Freq	ALT	Pos
HEIMDALL	348.7		

## OTHER FLIGHTS

Callsign	Mission	Airframe	Freq	TCN	Grpld	Laser
Raptor 1	Training	4x F-16C	134.0	1/64		162X
AO	ESR01	Task	SA2/3 Sead / DEAD Training			
Edelweiss 1	Training	4x F-16C	134.75	1/64		171X
AO	South Rovaniemi	Task	BJT			
Monster 1	Training	4x A-10C	132.15	1/64	21	161X
AO	ESR04	Task	CAS			
Nasty 6	JTAC	1x Ground	35.5	1/64		160X
AO		Task	JTAC ESR04			
Nazgul 6	Training	4x F-15E	262.45	1/64		156X
AO	ENR02	Task	WVR Training			
Rattler 2	Training	4x AH-64D	133.5	1/64		125X
AO	R92 A, B, C	Task				

## RADIO CHANNELS

#	Freq	Name
1		Flight/Squadron specific
2	282.8	Rovaniemi ATIS
3	282.5	Rovaniemi Ground
4	250.55	Rovaniemi Tower
5	320.7	Bodo ATIS
6	250.75	Bodo Tower
7	235.45	Kallax ATIS
8	250.3	Kallax Tower
9	265.0	Texaco-1   KC-135   Medium / Slow   71Y
10	319.8	Arco-1   KC-135   High / Fast   22Y
11	360.8	Shell-1   KC-135 MPRS   High / Fast   41Y
12	304.0	CVN-71 Rough Rider (RRR)   71X
13	303.0	LHA-1 Tarawa (TWA)   79X
14	247.8	S-3B Mauler-1 (MAU)  64Y
15	347.8	Loki (E-2D)
16	348.7	Heimdall (E-3A)
17	242.17	ESR02 - CAS Range Operator
18	34.7	ESR02 - JTAC Odin
19	270.5	Blue
20	270.75	Red

**RAMROD**

0	1	2	3	4	5	6	7	8	9
C	U	R	T	S	E	Y	I	N	G

**KTC 1400 C**

	0	1	2	3	4	5	6	7	8	9
A	VKMG	WTE	DXS	CJ	OI	QBL	FU	PA	HN	YR
B	STHE	RLN	MYP	QC	JV	WAD	FK	OU	BX	IG
C	WVSP	ECT	BIQ	YG	NL	MRK	UX	JD	AO	HF
D	JFMO	CWP	KXI	TH	BY	GQV	EL	NR	UA	DS
E	QYMV	JAG	EHT	XD	WS	KNO	PC	IB	UL	FR
F	KXGE	FIJ	RON	UH	VW	TQY	BD	AC	ML	PS
G	OCEI	NGV	HQM	DB	XY	TPW	LK	SF	UA	JR
H	AEGL	BXU	CHY	IM	WR	ODJ	FP	QT	NV	KS
I	JQUL	OFD	AIG	XW	EH	VCB	RK	SY	MT	NP
J	MULV	HIQ	RGS	DC	PW	EAN	FB	TO	KY	XJ
K	MQBP	GUN	YIH	AV	CX	EOW	TS	JR	DK	FL
L	CUVT	HDP	ONK	QE	YM	GAF	LS	XW	BR	IJ
M	JRYQ	VIO	KXD	EA	CW	UMS	NH	BT	FL	GP
N	VHBY	PRW	IUS	DN	MT	JQG	EC	OA	LX	FK
O	YLUS	IBJ	XPQ	KN	CO	WVG	DH	FE	TA	RM
P	VXAW	GEQ	RDU	TO	MY	HNI	BJ	KF	PL	SC
Q	DOSQ	PHU	CXW	NG	AF	LIK	TB	ME	RJ	VY
R	BUHY	TFN	SLX	IV	GW	RAJ	MC	OK	QE	PD
S	JVHW	KXE	PUR	OM	TY	CGF	IL	DA	QN	BS
T	UROL	BTP	ACH	SM	VQ	EYD	WX	KJ	NG	FI
U	TVSH	DAO	UCR	KB	GY	JQL	PF	MN	EW	XI
V	JYSA	LUR	BQE	MF	XD	CTK	WV	NI	PG	OH
W	VKSO	EBA	LQR	XG	HN	JCP	WF	TY	MU	DI
X	CXRI	QAU	EOP	TJ	BY	WKF	VS	DG	MN	HL
Y	EWDV	OIS	KJT	PB	NR	MUG	QH	AL	CY	XF

**NAVAIDS**

Id	Name	Channel	Position	Elevation
BOO	Bodo	45	N67 15.838 E014 20.046	43
BNK	Banak	47	N70 03.937 E024 58.181	17
OYA	Andoya	28	N69 17.175 E016 08.658	19



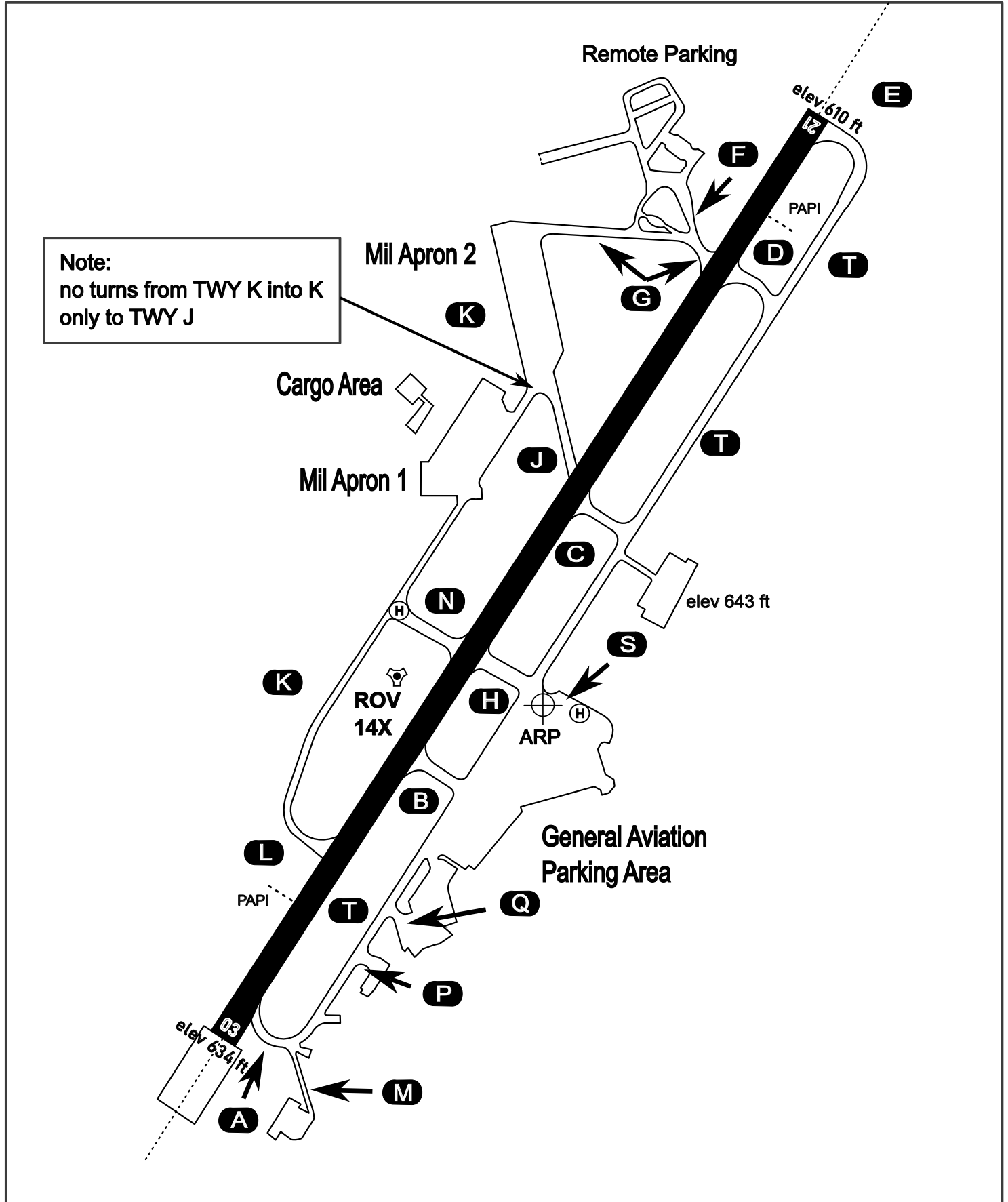
# AERODROME CHART

Rovaniemi Aerodrome

ARP N66° 33' 42" E025° 49' 51"

elev 643 ft

## ROVANIEMI, FINLAND

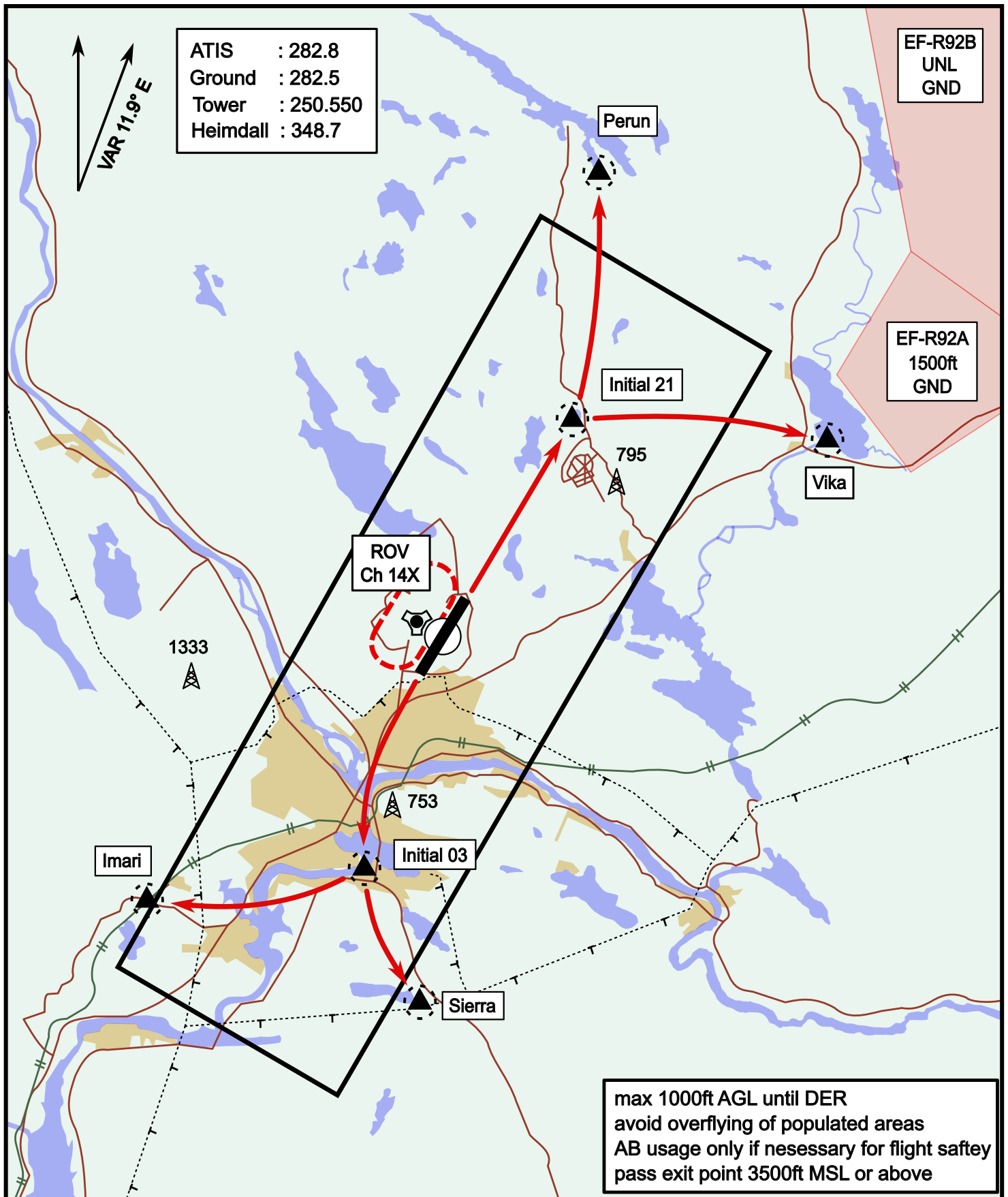


ATIS	Ground	Tower	Radar
282.800	282.500	250.550	348.700

# Visual Departure Jet

elev 643 ft

# Rovaniemi, Finland

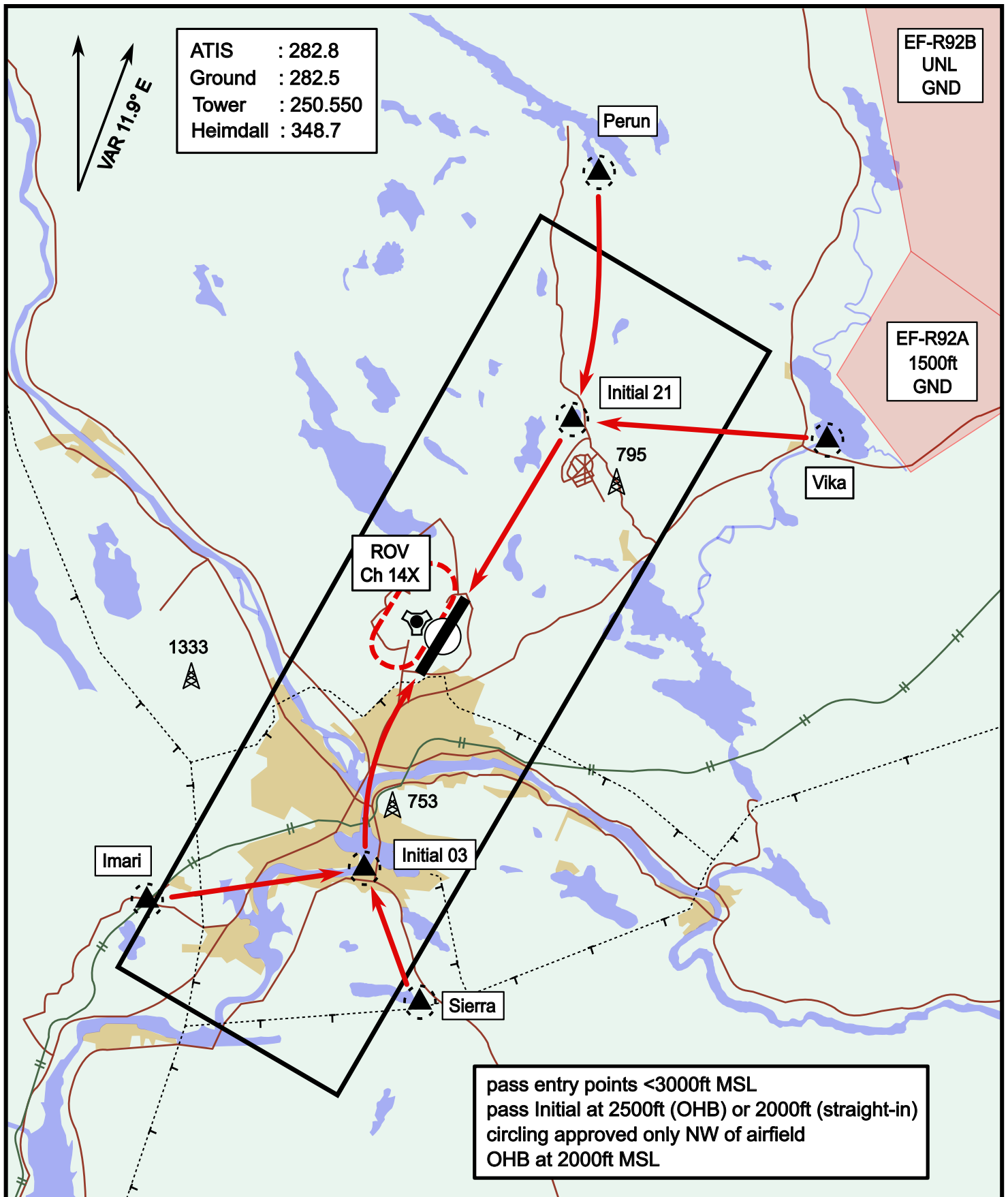


Vika	N66° 37.474 / E026° 13.557	Sierra	N66° 25.711 / E025° 46.610
Perun	N66° 44.135 / E026° 01.630	Imari	N66° 28.406 / E025° 31.291
Initial21	N66° 38.421 / E025° 58.682	Initial03	N66° 28.793 / E025° 44.105

# Visual Approach Jet

elev 643 ft

# Rovaniemi, Finland



Vika	N66° 37.474 / E026° 13.557	Sierra	N66° 25.711 / E025° 46.610
Perun	N66° 44.135 / E026° 01.630	Imari	N66° 28.406 / E025° 31.291
Initial21	N66° 38.421 / E025° 58.682	Initial03	N66° 28.793 / E025° 44.105

**NOT AVAILABLE**

**NOT AVAILABLE**