

**MISSION DATA CARD**

OPORD		Callsign		Mission		Date/Time		
3638/2025		Edelweiss 1		Training		102000FEB25		
Task						Freq		
AO						134.75		
Departure				Recovery				
VFR Departure				VFR Approach				
#	Callsign		Pilot		IFF	TCN	LSR	NET
-1	Edelweiss 1-1		Nerkub		1711	1Y	1711	
-2	Edelweiss 1-2		Meteor		1712	64Y	1712	

**LOADOUT**

A/A					GUN	100% HEI-T	
A/G					CHF	60	
POD					FLR	60	
TKS	FT300				FUEL	100%	

**TOLD**

	Takeoff	Target	Joker	Bingo	Land
FUEL	9166				

**AIRBASES**

	Name	TCN	ATIS	GND	TWR	RWY	Elev	ILS
Dep	Rovaniemi	14X	282.8	282.5	250.55	21	643	111.7
Arr	Rovaniemi	14X	282.8	282.5	250.55	21	643	111.7
Div	Kemi Tornio	106X			250.3	36	62	110.9

**FLIGHTPLAN**

#	Name	Navaid/Coords/DME	ALT	TOT
1	PERUN	N66 44 08.120 E026 01 37.812	3000	
2	NEMGU	N66 20 24.029 E024 41 39.025	3000	
3	6	N65 56 24.116 E024 36 10.547	3000	
4	Kemi Tornio	N65 46 53.344 E024 34 56.221	3000	
5	8	N65 37 09.287 E024 33 57.190	3000	
6	RENV1	N66 04 33.600 E025 31 54.003	3000	
7	SIERRA	N66 25 42.681 E025 46 36.642	3000	
8	RVNInit03	N66 28.793 E025 44.105	2500	
9	Rovaniemi	N66 33 53.445 E025 49 49.755	2000	

## OTHER FLIGHTS

Callsign	Mission	Airframe	Freq	TCN	Grpld	Laser
Tiger 1	Training	4x F/A-18C	261.15	1/64		155X
AO	ESR03	Task	Convoy Hunt			
Panther 1	Training	4x F/A-18C	261.35	1/64		157X
AO	ESR03	Task	Convoy Hunt			
Monster 1	Training	4x A-10C	132.15	1/64	21	161X
AO	Visit R93A,B & ESR03,4,6	Task	FAM Flight			
Raptor 1	Training	4x F-16C	134.0	1/64		162X
AO		Task	SEAD Training SA-2			
Raptor 2	Training	4x F-16C	134.0	2/65		162X
AO		Task	SEAD Training SA-2			
Rattler 1	Training	4x AH-64D	133.5	1/64		125X
AO	R92A R92B R92C	Task				
T-Rex 1	Training	4x A-10C	132.25	1/64	25	165X
AO	Visit Ranges	Task	FAM Flight			
Edelweiss 6	Training	2x F/A-18C	134.65	1/64	40	166X
AO		Task				

## RADIO CHANNELS

#	Freq	Name
1		Flight/Squadron specific
2	282.8	Rovaniemi ATIS
3	282.5	Rovaniemi Ground
4	250.55	Rovaniemi Tower
5	320.7	Bodo ATIS
6	250.75	Bodo Tower
7	235.45	Kallax ATIS
8	250.3	Kallax Tower
9	265.0	Texaco-1   KC-135   Medium / Slow   71Y
10	319.8	Arco-1   KC-135   High / Fast   22Y
11	360.8	Shell-1   KC-135 MPRS   High / Fast   41Y
12	304.0	CVN-71 Rough Rider (RRR)   71X
13	303.0	LHA-1 Tarawa (TWA)   79X
14	247.8	S-3B Mauler-1 (MAU)  64Y
15	347.8	Loki (E-2D)
16	348.7	Heimdall (E-3A)
17	242.17	ESR02 - CAS Range Operator
18	34.7	ESR02 - JTAC Odin
19	270.5	Blue
20	270.75	Red

**RAMROD**

0	1	2	3	4	5	6	7	8	9
P	A	L	I	N	D	R	O	M	E

**KTC 1400 C**

	0	1	2	3	4	5	6	7	8	9
A	USKJ	VAQ	ERN	WC	PL	MXI	GB	YO	TH	FD
B	ANFI	JQB	PYT	GS	MR	CVH	XE	WO	KD	LU
C	NOGL	MKR	WFU	ED	BJ	YSP	IQ	HA	CX	VT
D	WOAH	LYT	SFV	NP	GR	DXE	JC	QM	BU	IK
E	AHMI	TDO	XGK	PF	UE	SJL	NC	BR	WY	QV
F	NDKQ	BYX	WJH	GF	SU	IEV	MC	OP	AR	TL
G	PLRE	UJQ	DCS	TW	BO	MHI	XF	GY	KN	VA
H	GLVF	OJT	NMQ	IY	UR	XWE	AH	KD	PB	CS
I	RCMP	HKW	GBV	EL	YD	USO	AN	TF	JI	XQ
J	PRKX	OBC	HJU	FM	DT	IWG	SN	AQ	EL	YV
K	YKHV	TMB	EWN	GA	UO	SCL	JF	IX	PR	DQ
L	DRIS	EWL	AGN	TO	FK	YXB	CM	HJ	VU	QP
M	GFOB	AHK	YRV	NP	CI	JLE	SM	WU	XT	QD
N	WFEX	HLC	PUT	ID	VB	JNY	KM	QS	GA	RO
O	SAJB	WVU	NLO	ET	KR	MDY	PQ	IG	XC	HF
P	BDAC	EJW	KPG	RX	HO	QIN	UV	FS	ML	TY
Q	WMFA	VRO	YHK	UT	CB	JNQ	PI	ED	LG	XS
R	WVAG	OFX	NSR	TM	YU	PHB	DK	EC	IL	QJ
S	FEBK	SRQ	LHT	WO	NM	XPD	AJ	YI	VC	UG
T	JTAP	NRH	ILV	EO	WC	BSG	XY	UK	QM	DF
U	UNWK	FHD	VYG	BE	TC	ASO	RX	LJ	PI	QM
V	UPOX	EWY	NVT	DH	KL	RAI	FS	BC	JG	QM
W	NBDX	YQF	IJR	OM	KE	LWT	SG	HU	PC	AV
X	YIMN	FTW	SLO	JP	GA	VCH	DB	EQ	XR	UK
Y	UWIN	DGB	ASM	RT	HJ	CFY	OX	PV	QL	KE

**NAVAIDS**

Id	Name	Channel	Position	Elevation
BOO	Bodo	45	N67 15.838 E014 20.046	43
BNK	Banak	47	N70 03.937 E024 58.181	17
OYA	Andoya	28	N69 17.175 E016 08.658	19

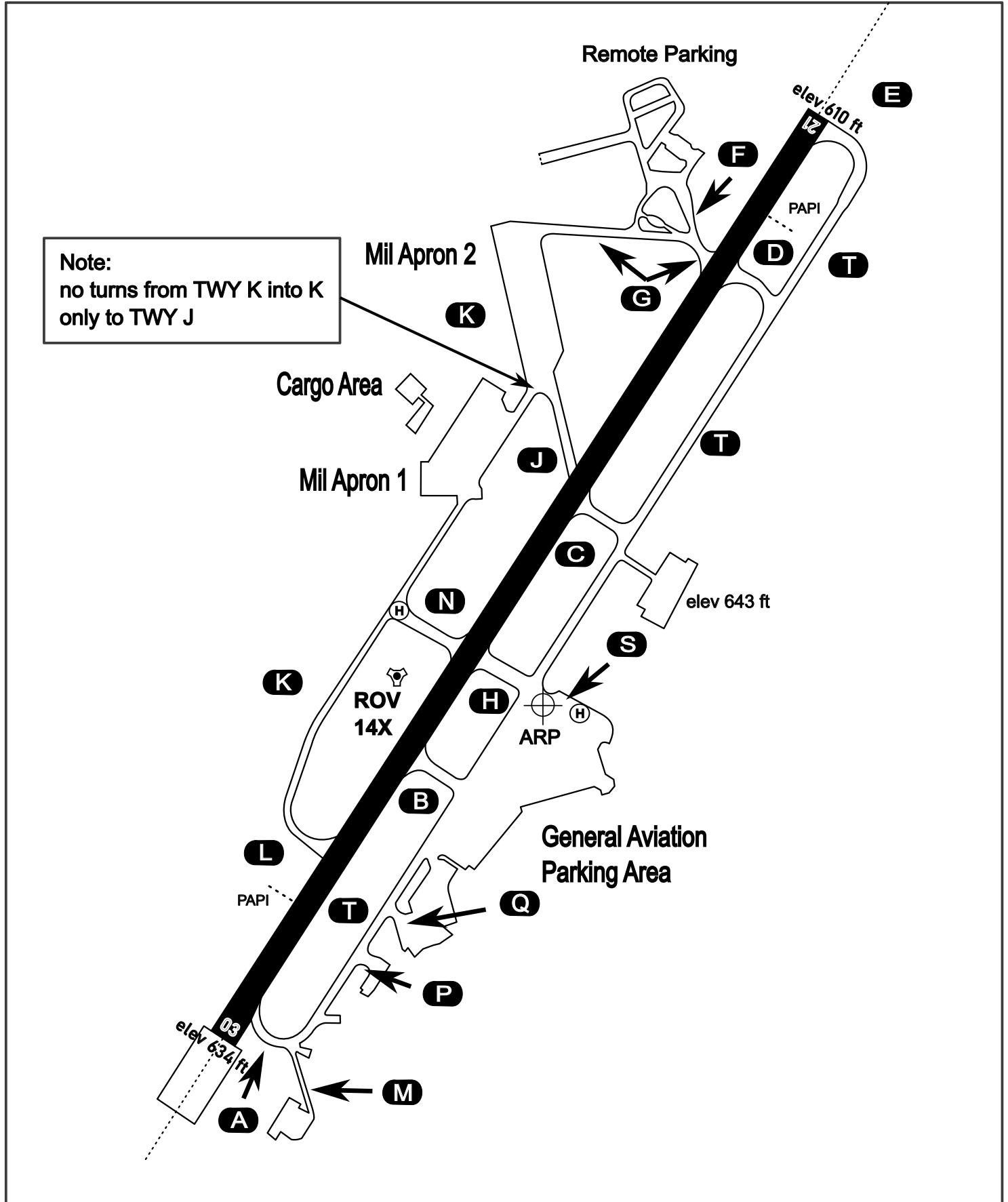
# AERODROME CHART

Rovaniemi Aerodrome

ARP N66° 33' 42" E025° 49' 51"

elev 643 ft

## ROVANIEMI, FINLAND

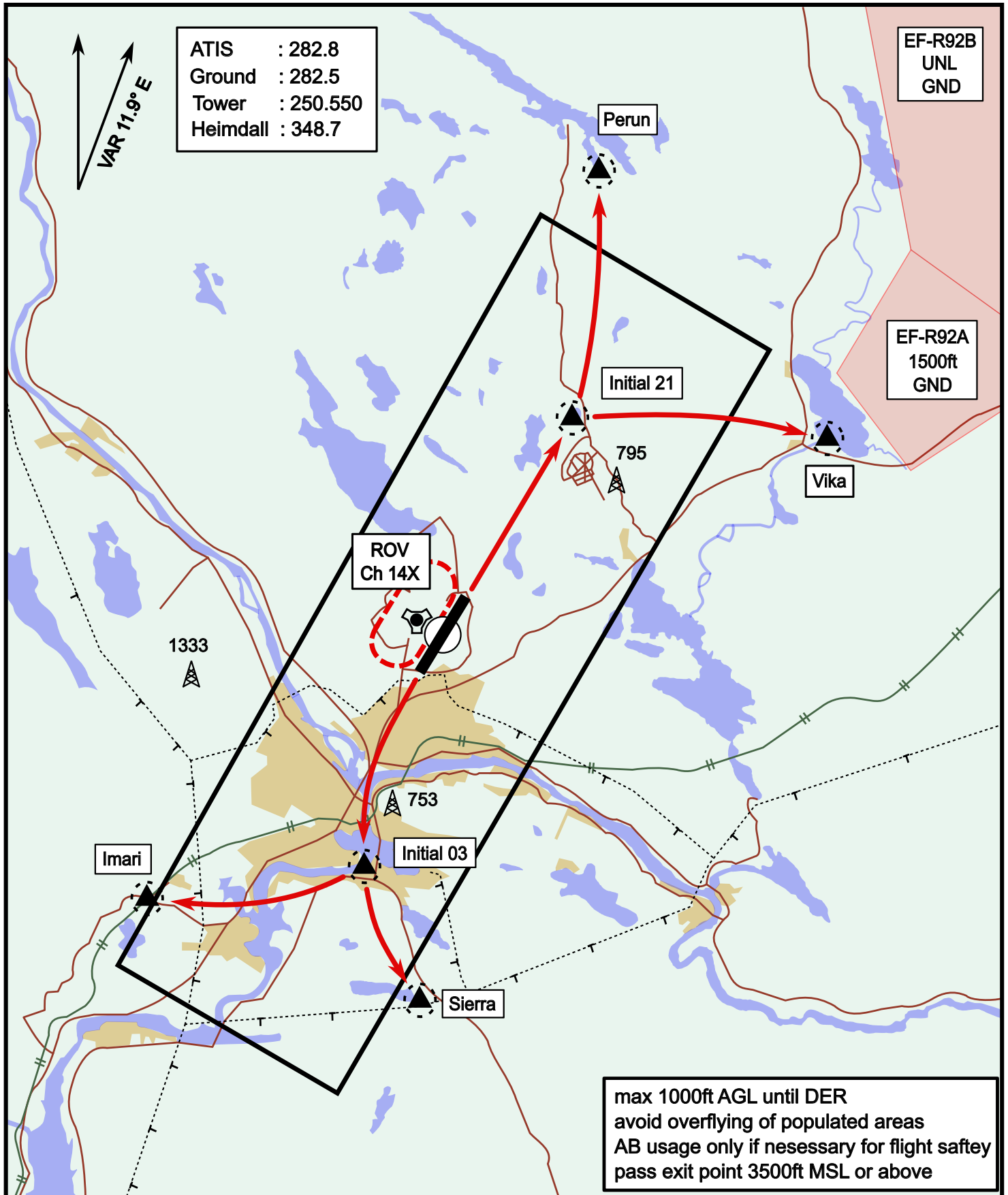


ATIS	Ground	Tower	Radar
282.800	282.500	250.550	348.700

# Visual Departure Jet

elev 643 ft

# Rovaniemi, Finland



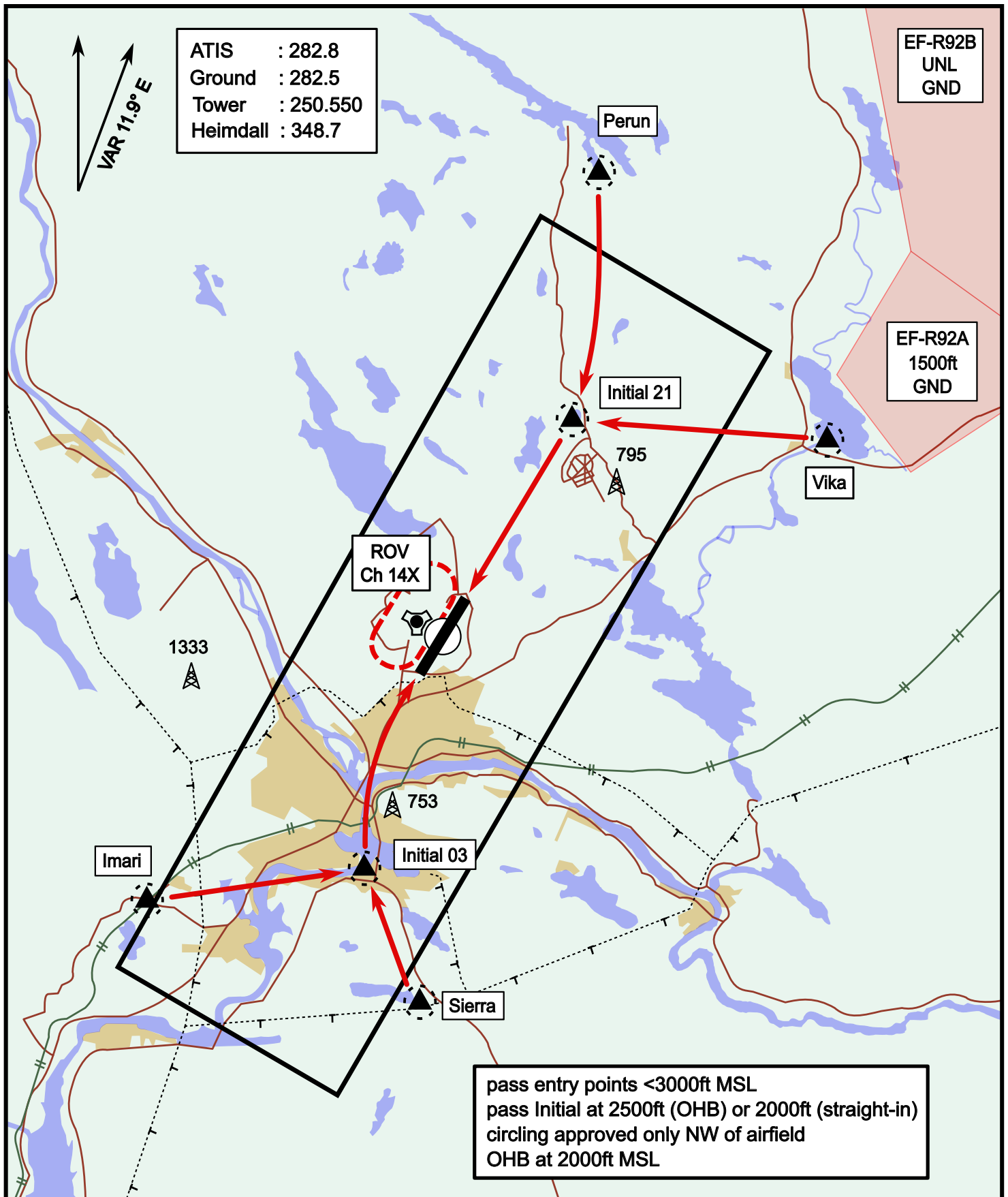
Vika	N66° 37.474 / E026° 13.557	Sierra	N66° 25.711 / E025° 46.610
Perun	N66° 44.135 / E026° 01.630	Imari	N66° 28.406 / E025° 31.291
Initial21	N66° 38.421 / E025° 58.682	Initial03	N66° 28.793 / E025° 44.105



# Visual Approach Jet

elev 643 ft

# Rovaniemi, Finland



Vika	N66° 37.474 / E026° 13.557	Sierra	N66° 25.711 / E025° 46.610
Perun	N66° 44.135 / E026° 01.630	Imari	N66° 28.406 / E025° 31.291
Initial21	N66° 38.421 / E025° 58.682	Initial03	N66° 28.793 / E025° 44.105

**NOT AVAILABLE**

**NOT AVAILABLE**