

**MISSION DATA CARD**

OPORD		Callsign		Mission		Date/Time		
3633/2025		Gunslinger* 1		Training		091800FEB25		
Task						Freq		
AO	R92A R92B R92C					132.0		
Departure				Recovery				
VFR Helicopter				VFR Helicopter				
#	Callsign		Pilot		IFF	TCN	LSR	NET
-1	Gunslinger* 1-1		Butcher		4621	1Y	1251	

**LOADOUT**

A/A						GUN	
A/G						CHF	
POD						FLR	
TKS						FUEL	

**TOLD**

	Takeoff	Target	Joker	Bingo	Land
FUEL	736				

**AIRBASES**

	Name	TCN	ATIS	GND	TWR	RWY	Elev	ILS
Dep	Rovaniemi	14X	282.8	282.5	250.55	21	643	111.7
Arr	Rovaniemi	14X	282.8	282.5	250.55	21	643	111.7

**FLIGHTPLAN**

#	Name	Navaid/Coords/DME	ALT	TOT
1	RVNInit21	N66 38.642 E025 58.682		
2	VIKA	N66 37.474 E026 13.557		
3	R92A-FARP-KIMI	N66 37.800 E026 22.717		
4	R92B-ENTRY-SOUTH	N66 39.117 E026 25.200		
5	R92B-BP ALPHA	N66 39.867 E026 28.783		
6	R92B-RP EAST	N66 44.217 E026 26.250		
7	R92B-BP HUNTER	N66 47.250 E026 28.283		

**COMMS**

Radio	Usage
1	133.5
2	282.5 / 250.55 / 348.7
3	35.00
4	30.00

## NOTES

Range functionality test

**SUPPORT****AWACS**

Callsign

Freq

ALT

Pos

HEIMDALL

348.7

## RADIO CHANNELS

#	Freq	Name
1		Flight/Squadron specific
2	282.8	Rovaniemi ATIS
3	282.5	Rovaniemi Ground
4	250.55	Rovaniemi Tower
5	320.7	Bodo ATIS
6	250.75	Bodo Tower
7	235.45	Kallax ATIS
8	250.3	Kallax Tower
9	265.0	Texaco-1   KC-135   Medium / Slow   71Y
10	319.8	Arco-1   KC-135   High / Fast   22Y
11	360.8	Shell-1   KC-135 MPRS   High / Fast   41Y
12	304.0	CVN-71 Rough Rider (RRR)   71X
13	303.0	LHA-1 Tarawa (TWA)   79X
14	247.8	S-3B Mauler-1 (MAU)  64Y
15	347.8	Loki (E-2D)
16	348.7	Heimdall (E-3A)
17	242.17	ESR02 - CAS Range Operator
18	34.7	ESR02 - JTAC Odin
19	270.5	Blue
20	270.75	Red

**RAMROD**

0	1	2	3	4	5	6	7	8	9
P	A	T	R	O	N	Y	M	I	C

**KTC 1400 C**

	0	1	2	3	4	5	6	7	8	9
A	JKTL	UVX	DFY	ER	QG	NHC	SP	AO	IW	BM
B	VBDT	LMA	CEG	RY	FQ	XKP	SH	UO	JI	NW
C	EJYF	CLP	VMI	HU	XA	TDO	BS	RK	GQ	WN
D	PNOX	QEL	RAS	DU	HB	VYI	MK	GC	WF	TJ
E	VPXM	QSK	BCG	UL	TO	JNE	FI	DA	RW	HY
F	KRJG	BCE	XAP	WO	ND	YML	UQ	TS	HV	IF
G	DYAE	WON	UQF	MG	VK	HIT	CL	JP	RB	SX
H	UCHB	WAG	QTK	VX	FI	MYL	ON	RD	JE	SP
I	BDPV	USH	IWK	GQ	FT	NEJ	CA	XR	MY	LO
J	LKJS	HNW	PED	XG	VQ	FAI	CM	OT	UB	RY
K	CRQT	APV	KLM	ED	BS	YNH	FI	JX	OU	WG
L	RYVN	GXE	DBS	PJ	CT	IML	WH	OF	UK	QA
M	VBRO	CMU	NAL	EW	XD	KTH	PQ	JI	SG	FY
N	DLWN	JVC	MTI	GU	AF	PQE	SK	XY	RH	OB
O	LOQE	NPG	WKD	MV	HB	AYR	JS	XI	UT	FC
P	POGT	VXA	HDW	BM	RQ	FSY	IC	JN	UK	EL
Q	AUNF	SCJ	RLB	XV	TK	OHW	MI	PE	DQ	GY
R	JOKA	UBI	FSR	HN	QY	LWC	PG	VD	ET	XM
S	ANYH	OSQ	CBX	TM	IU	VJF	WD	GL	EP	RK
T	XAYB	CWG	JHN	TQ	SM	FIL	PR	OV	UD	KE
U	HLTR	VQD	NBG	FJ	PA	WXI	US	OE	KM	CY
V	NBHI	GXK	RSQ	FT	VM	JUE	LY	CD	AO	PW
W	VIQO	DFJ	UGK	MN	YE	BHA	XL	SC	TP	RW
X	CVEA	PJX	WDO	NF	GB	URH	IT	QS	MY	LK
Y	EFAH	PGN	LSJ	YB	DT	CUQ	WX	IK	RO	MV

**NAVAIDS**

Id	Name	Channel	Position	Elevation
BOO	Bodo	45	N67 15.838 E014 20.046	43
BNK	Banak	47	N70 03.937 E024 58.181	17
OYA	Andoya	28	N69 17.175 E016 08.658	19

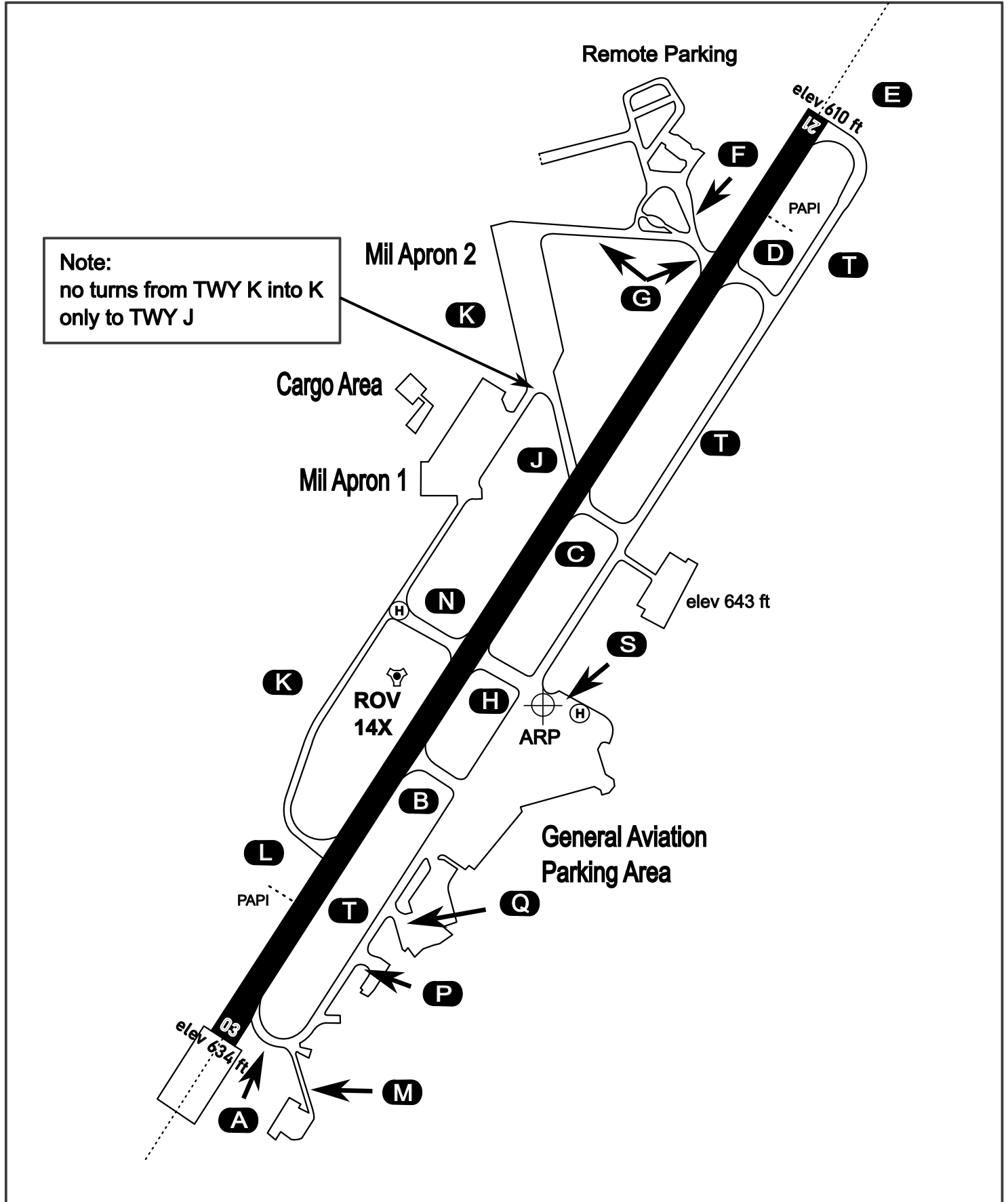
# AERODROME CHART

Rovaniemi Aerodrome

ARP N66° 33' 42" E025° 49' 51"

elev 643 ft

## ROVANIEMI, FINLAND



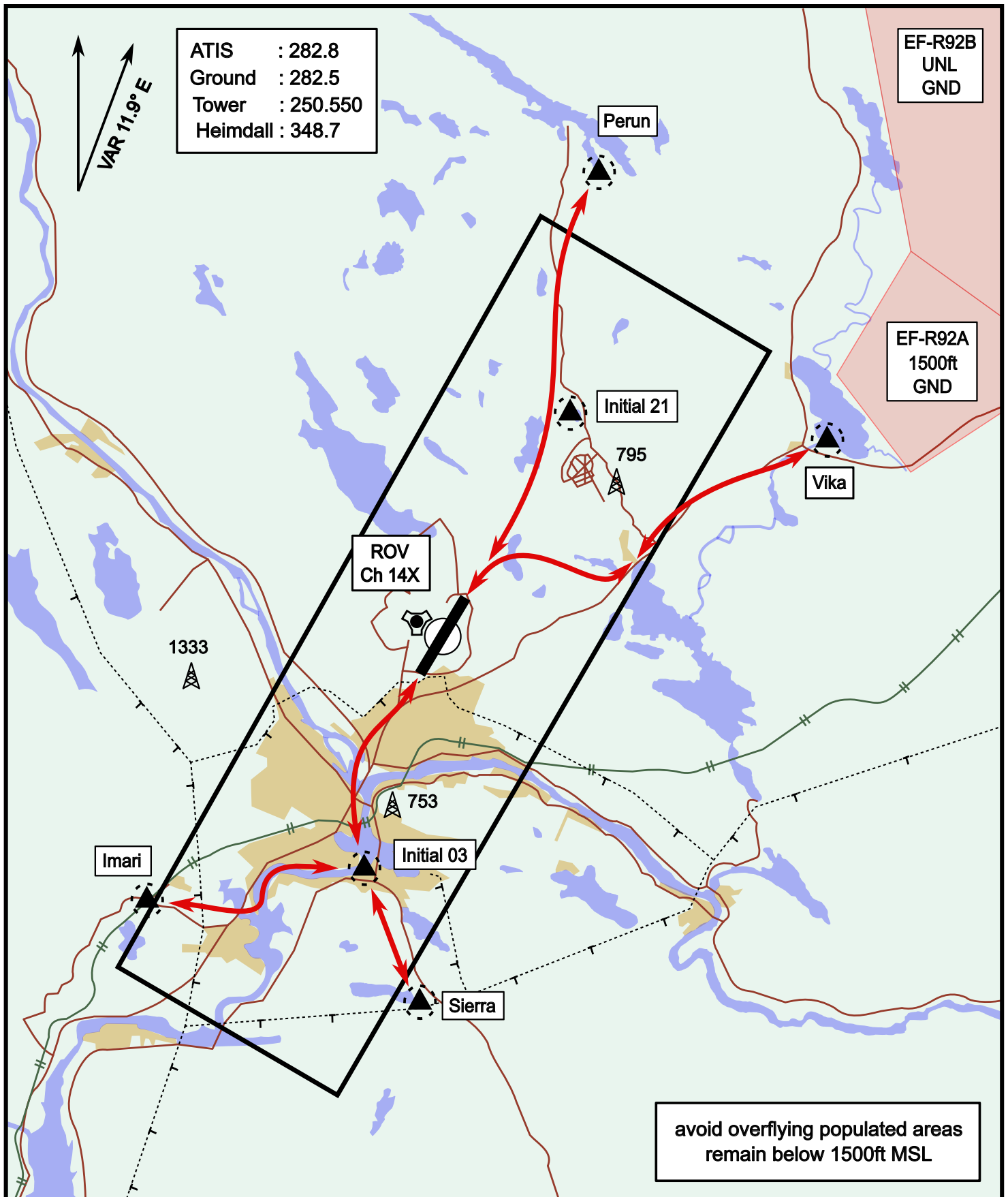
ATIS	Ground	Tower	Radar
282.800	282.500	250.550	348.700



# Helicopter Routing

elev 643 ft

# Rovaniemi, Finland

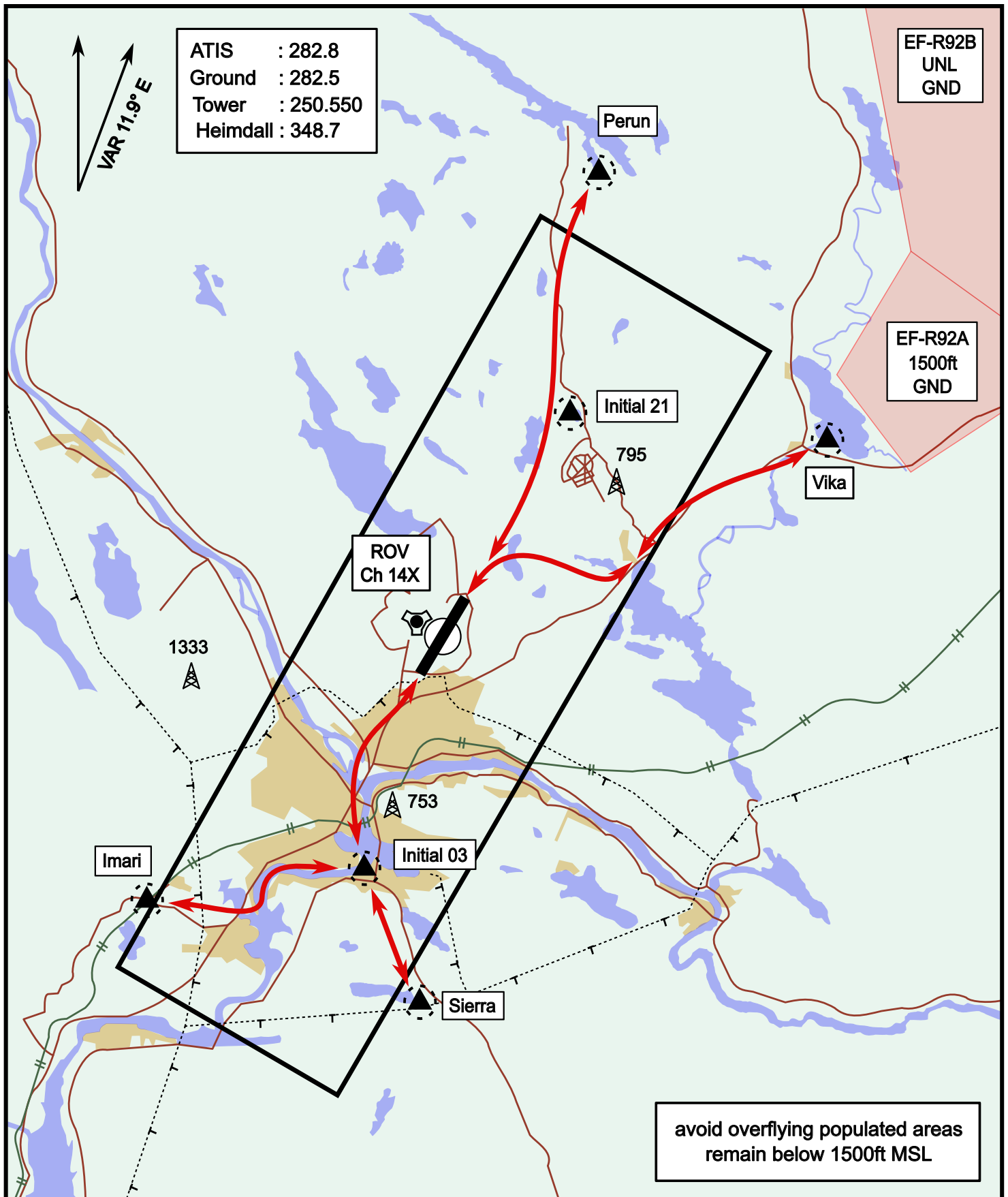


Vika	N66° 37.474 / E026° 13.557	Sierra	N66° 25.711 / E025° 46.610
Perun	N66° 44.135 / E026° 01.630	Imari	N66° 28.406 / E025° 31.291
Initial21	N66° 38.421 / E025° 58.682	Initial03	N66° 28.793 / E025° 44.105

# Helicopter Routing

elev 643 ft

# Rovaniemi, Finland



Vika	N66° 37.474 / E026° 13.557	Sierra	N66° 25.711 / E025° 46.610
Perun	N66° 44.135 / E026° 01.630	Imari	N66° 28.406 / E025° 31.291
Initial21	N66° 38.421 / E025° 58.682	Initial03	N66° 28.793 / E025° 44.105