

**MISSION DATA CARD**

OPORD		Callsign		Mission		Date/Time		
3631/2025		Edelweiss 1		Training		082059FEB25		
Task						Freq		
AO						264.15		
Departure				Recovery				
SID RWY 21				ILS RWY 21				
#	Callsign		Pilot		IFF	TCN	LSR	NET

**LOADOUT**

A/A						GUN	
A/G						CHF	
POD						FLR	
TKS						FUEL	

**TOLD**

	Takeoff	Target	Joker	Bingo	Land
FUEL	10803				

**AIRBASES**

	Name	TCN	ATIS	GND	TWR	RWY	Elev	ILS
Dep	Rovaniemi	14X	282.8	282.5	250.55	21	643	111.7
Arr	Rovaniemi	14X	282.8	282.5	250.55	21	643	111.7

## RADIO CHANNELS

#	Freq	Name
1		Flight/Squadron specific
2	282.8	Rovaniemi ATIS
3	282.5	Rovaniemi Ground
4	250.55	Rovaniemi Tower
5	320.7	Bodo ATIS
6	250.75	Bodo Tower
7	235.45	Kallax ATIS
8	250.3	Kallax Tower
9	265.0	Texaco-1   KC-135   Medium / Slow   71Y
10	319.8	Arco-1   KC-135   High / Fast   22Y
11	360.8	Shell-1   KC-135 MPRS   High / Fast   41Y
12	304.0	CVN-71 Rough Rider (RRR)   71X
13	303.0	LHA-1 Tarawa (TWA)   79X
14	247.8	S-3B Mauler-1 (MAU)  64Y
15	347.8	Loki (E-2D)
16	348.7	Heimdall (E-3A)
17	242.17	ESR02 - CAS Range Operator
18	34.7	ESR02 - JTAC Odin
19	270.5	Blue
20	270.75	Red

RAMROD										
0	1	2	3	4	5	6	7	8	9	
S	H	O	P	L	I	F	T	E	D	
KTC 1400 C										
	0	1	2	3	4	5	6	7	8	9
A	FVYQ	XHU	IBG	NT	KP	OWC	SL	JR	DE	AM
B	RNCQ	EXA	JDP	UH	BL	VKT	MO	WG	SY	FI
C	LAKB	DFS	QMJ	IO	XU	VCW	HE	RG	TP	YN
D	BMOQ	CXH	ILN	AS	WV	KEF	DJ	UY	GR	PT
E	EMBT	PYX	OHQ	WG	UK	RND	VF	JS	LA	IC
F	BWDR	JKX	SEI	QY	OM	NTH	LG	VU	FA	PC
G	SJHA	KMT	XYO	CB	WD	FVU	PQ	NR	EG	IL
H	ILPQ	CXS	KAV	ON	WY	MTB	UJ	EF	RH	DG
I	EROI	QTN	CHS	LK	XJ	UDB	GP	FV	WM	YA
J	CMGS	QUK	YRI	FT	OD	PXL	HV	NJ	AE	BW
K	ETBM	VOK	WRN	SJ	QF	HAU	IP	GC	DL	YX
L	QWHV	RLU	JCI	OG	TF	MBX	KA	EN	YD	SP
M	RMQF	CHI	LGV	NX	JT	PDE	SY	OW	AK	BU
N	PTQC	WAU	KGB	JO	EI	MNL	XY	RS	FV	DH
O	FVHL	WJX	NGY	CU	OB	KDT	SA	IE	QM	RP
P	KNLF	JYU	QHA	PR	DX	SVC	BW	OE	GT	MI
Q	SFOB	YGC	TJA	HX	RQ	LVU	ID	EP	WN	MK
R	MFVK	JUH	TLD	AQ	YR	CWG	BO	IN	PX	SE
S	WPYU	SLM	EFV	CQ	HJ	TDB	NK	GI	AO	RX
T	LOFB	NRC	YAJ	HV	QX	DIK	SU	TP	GM	EW
U	NWTC	JLR	MFX	VG	HK	DEO	YB	US	QI	AP
V	LYTK	RAM	QPD	FS	CX	WVI	NB	OG	UE	HJ
W	DUEF	IMS	GLC	QK	BH	AVO	TR	WN	YX	PJ
X	DABW	YNP	HFJ	UG	MC	KQI	TV	XL	OR	SE
Y	MNGS	KWX	RTY	UA	ID	OCH	FL	JV	QP	EB

**NAVAIDS**

Id	Name	Channel	Position	Elevation
BOO	Bodo	45	N67 15.838 E014 20.046	43
BNK	Banak	47	N70 03.937 E024 58.181	17
OYA	Andoya	28	N69 17.175 E016 08.658	19

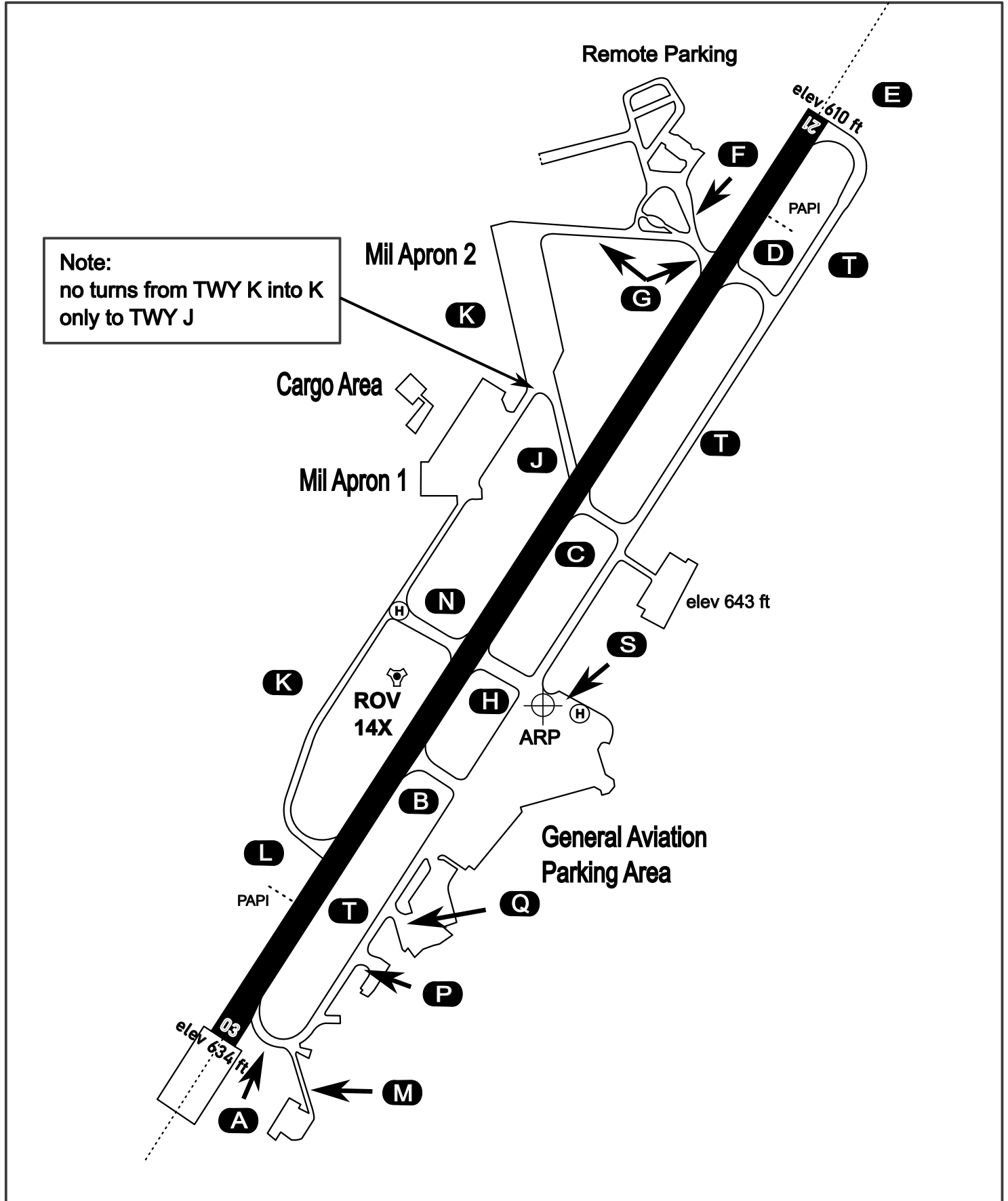
# AERODROME CHART

Rovaniemi Aerodrome

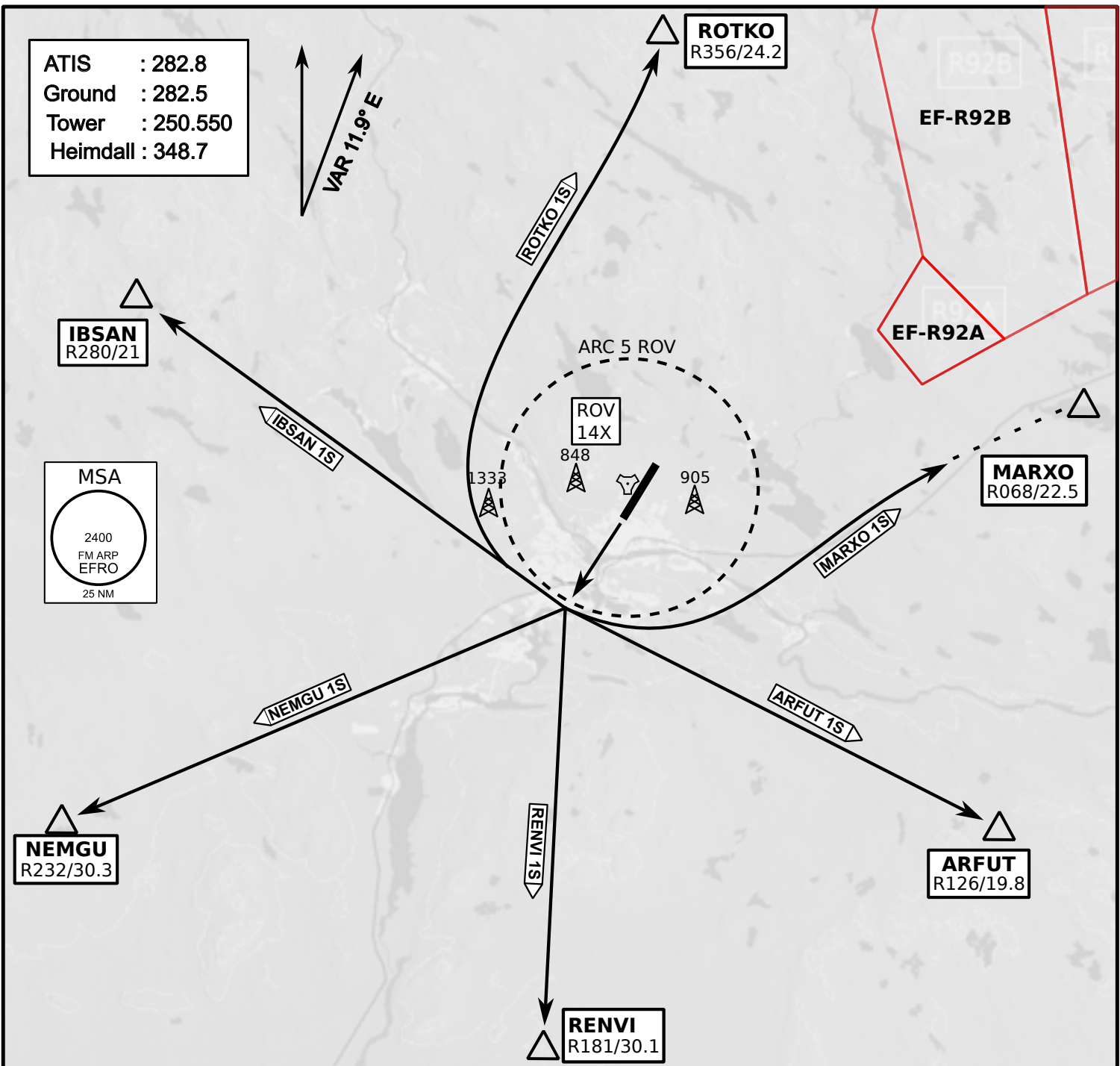
ARP N66° 33' 42" E025° 49' 51"

elev 643 ft

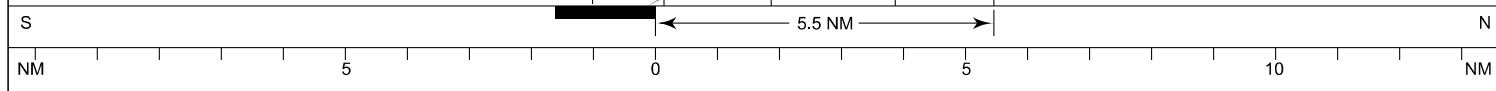
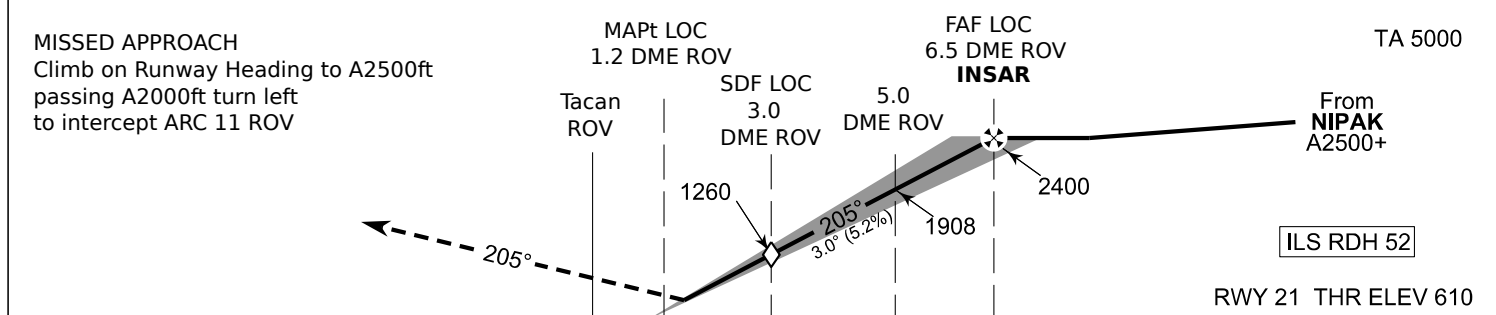
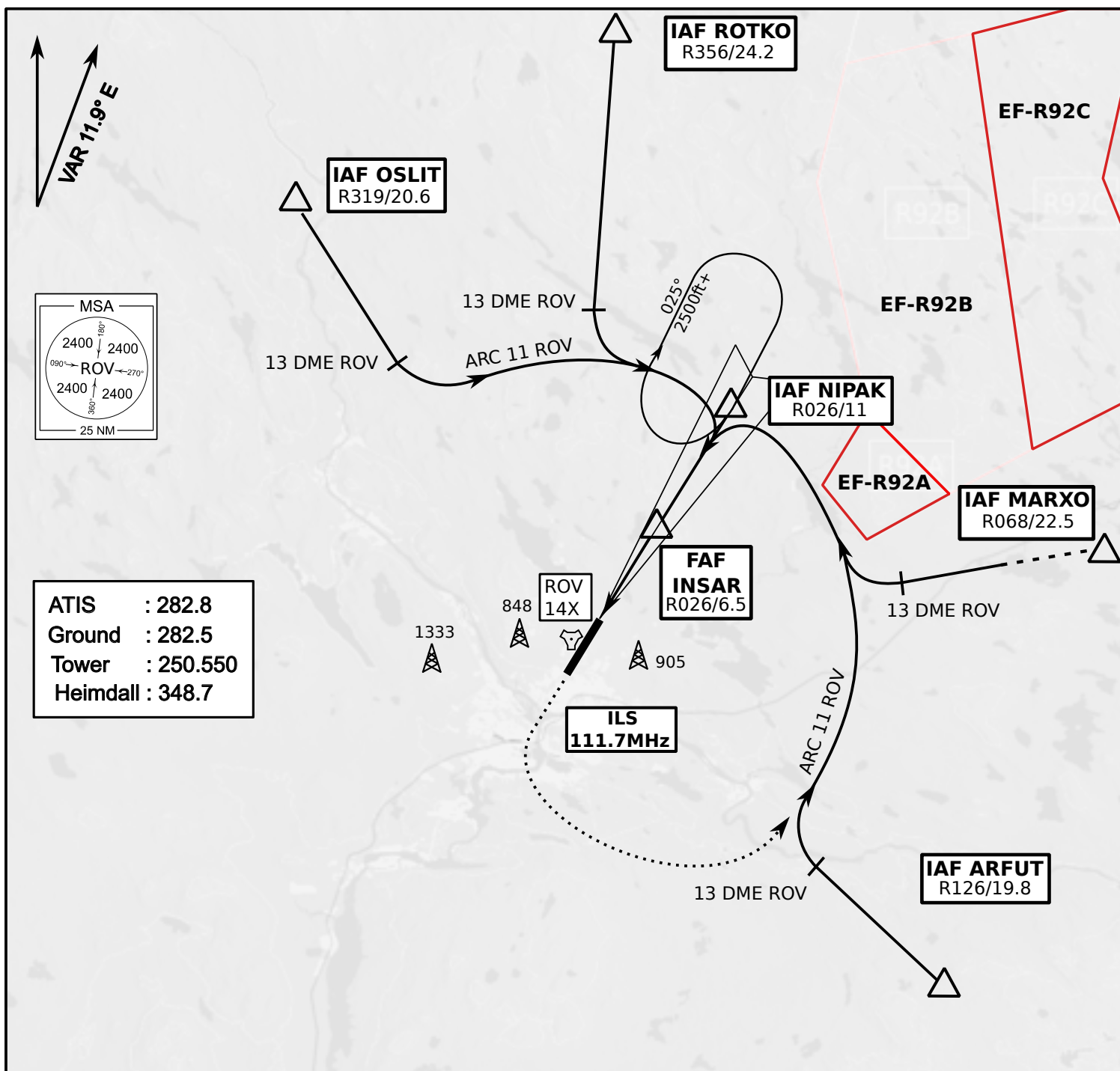
## ROVANIEMI, FINLAND



ATIS	Ground	Tower	Radar
282.800	282.500	250.550	348.700



- Climb on Rwy heading to min A2000ft
- when passing A2000ft OR 5 DME ROV (whichever is later) turn direct exit point
- Stay outside ARC 5 ROV
- AB usage only if necessary for flight safety



OCA (H)	A	B	C	D
ILS CAT I	773 (164)	784 (175)	795 (186)	809 (200)
LOC	930 (320)			
LOC WO SDF	1260 (650)			
Circling	1120 (470)	1150 (510)	1300 (660)	1340 (690)

	kt	90	100	120	140	160
FAF - MAPt 5.4 NM	min:sec	3:36	3:14	2:42	2:19	2:01
Rate of descent	ft/min	480	530	640	740	850

Timing not authorized for defining the MAPt