

**MISSION DATA CARD**

OPORD		Callsign		Mission		Date/Time		
3630/2025		Raptor 1		Training		080000FEB25		
Task	SA 10 DEAD					Freq		
AO	ESR01					134.0		
Departure				Recovery				
SID RWY 21				VFR Approach				
#	Callsign		Pilot		IFF	TCN	LSR	NET
-1	Raptor 1-1		Newbie		1621	1Y	1621	
-2	Raptor 1-2		Void		1622	64Y	1622	

**LOADOUT**

A/A						GUN	
A/G						CHF	
POD						FLR	
TKS						FUEL	

**TOLD**

	Takeoff	Target	Joker	Bingo	Land
FUEL	7163				

**AIRBASES**

	Name	TCN	ATIS	GND	TWR	RWY	Elev	ILS
Dep	Rovaniemi	14X	282.8	282.5	250.55	21	643	111.7
Arr	Rovaniemi	14X	282.8	282.5	250.55	21	643	111.7

**FLIGHTPLAN**

#	Name	Navaid/Coords/DME	ALT	TOT
1	IBSAN	N66 42 30.019 E025 01 04.824	15000	
2	Entry ERS01	N67 47 25.437 E021 06 56.183	23000	
3	Holding Sa10	N68 11 05.160 E020 30 23.220	20000	
4	T-ESR01 SA10	N68 27 55.800 E020 52 54.181	1854	
5	PERUN	N66 44 08.120 E026 01 37.812	3000	
6	Initial 21	N66 38 25.261 E025 58 40.958	2500	
7	Rovaniemi	N66 33 53.445 E025 49 49.755	636	

**SUPPORT****Tanker**

Callsign	TCN	Freq	ALT	TAS
ARCO 1	22Y	319.8		
Pos				

**OTHER FLIGHTS**

Callsign	Mission	Airframe	Freq	TCN	Grpld	Laser
Edelweiss	Training	1x A-10C	264.05	1/64		170X
AO		Task				

## RADIO CHANNELS

#	Freq	Name
1		Flight/Squadron specific
2	282.8	Rovaniemi ATIS
3	282.5	Rovaniemi Ground
4	250.55	Rovaniemi Tower
5	320.7	Bodo ATIS
6	250.75	Bodo Tower
7	235.45	Kallax ATIS
8	250.3	Kallax Tower
9	265.0	Texaco-1   KC-135   Medium / Slow   71Y
10	319.8	Arco-1   KC-135   High / Fast   22Y
11	360.8	Shell-1   KC-135 MPRS   High / Fast   41Y
12	304.0	CVN-71 Rough Rider (RRR)   71X
13	303.0	LHA-1 Tarawa (TWA)   79X
14	247.8	S-3B Mauler-1 (MAU)  64Y
15	347.8	Loki (E-2D)
16	348.7	Heimdall (E-3A)
17	242.17	ESR02 - CAS Range Operator
18	34.7	ESR02 - JTAC Odin
19	270.5	Blue
20	270.75	Red

**RAMROD**

0	1	2	3	4	5	6	7	8	9
S	H	O	P	L	I	F	T	E	D

**KTC 1400 C**

	0	1	2	3	4	5	6	7	8	9
A	FVYQ	XHU	IBG	NT	KP	OWC	SL	JR	DE	AM
B	RNCQ	EXA	JDP	UH	BL	VKT	MO	WG	SY	FI
C	LAKB	DFS	QMJ	IO	XU	VCW	HE	RG	TP	YN
D	BMOQ	CXH	ILN	AS	WV	KEF	DJ	UY	GR	PT
E	EMBT	PYX	OHQ	WG	UK	RND	VF	JS	LA	IC
F	BWDR	JKX	SEI	QY	OM	NTH	LG	VU	FA	PC
G	SJHA	KMT	XYO	CB	WD	FVU	PQ	NR	EG	IL
H	ILPQ	CXS	KAV	ON	WY	MTB	UJ	EF	RH	DG
I	EROI	QTN	CHS	LK	XJ	UDB	GP	FV	WM	YA
J	CMGS	QUK	YRI	FT	OD	PXL	HV	NJ	AE	BW
K	ETBM	VOK	WRN	SJ	QF	HAU	IP	GC	DL	YX
L	QWHV	RLU	JCI	OG	TF	MBX	KA	EN	YD	SP
M	RMQF	CHI	LGV	NX	JT	PDE	SY	OW	AK	BU
N	PTQC	WAU	KGB	JO	EI	MNL	XY	RS	FV	DH
O	FVHL	WJX	NGY	CU	OB	KDT	SA	IE	QM	RP
P	KNLF	JYU	QHA	PR	DX	SVC	BW	OE	GT	MI
Q	SFOB	YGC	TJA	HX	RQ	LVU	ID	EP	WN	MK
R	MFVK	JUH	TLD	AQ	YR	CWG	BO	IN	PX	SE
S	WPYU	SLM	EFV	CQ	HJ	TDB	NK	GI	AO	RX
T	LOFB	NRC	YAJ	HV	QX	DIK	SU	TP	GM	EW
U	NWTC	JLR	MFX	VG	HK	DEO	YB	US	QI	AP
V	LYTK	RAM	QPD	FS	CX	WVI	NB	OG	UE	HJ
W	DUEF	IMS	GLC	QK	BH	AVO	TR	WN	YX	PJ
X	DABW	YNP	HFJ	UG	MC	KQI	TV	XL	OR	SE
Y	MNGS	KWX	RTY	UA	ID	OCH	FL	JV	QP	EB

**NAVAIDS**

Id	Name	Channel	Position	Elevation
BOO	Bodo	45	N67 15.838 E014 20.046	43
BNK	Banak	47	N70 03.937 E024 58.181	17
OYA	Andoya	28	N69 17.175 E016 08.658	19

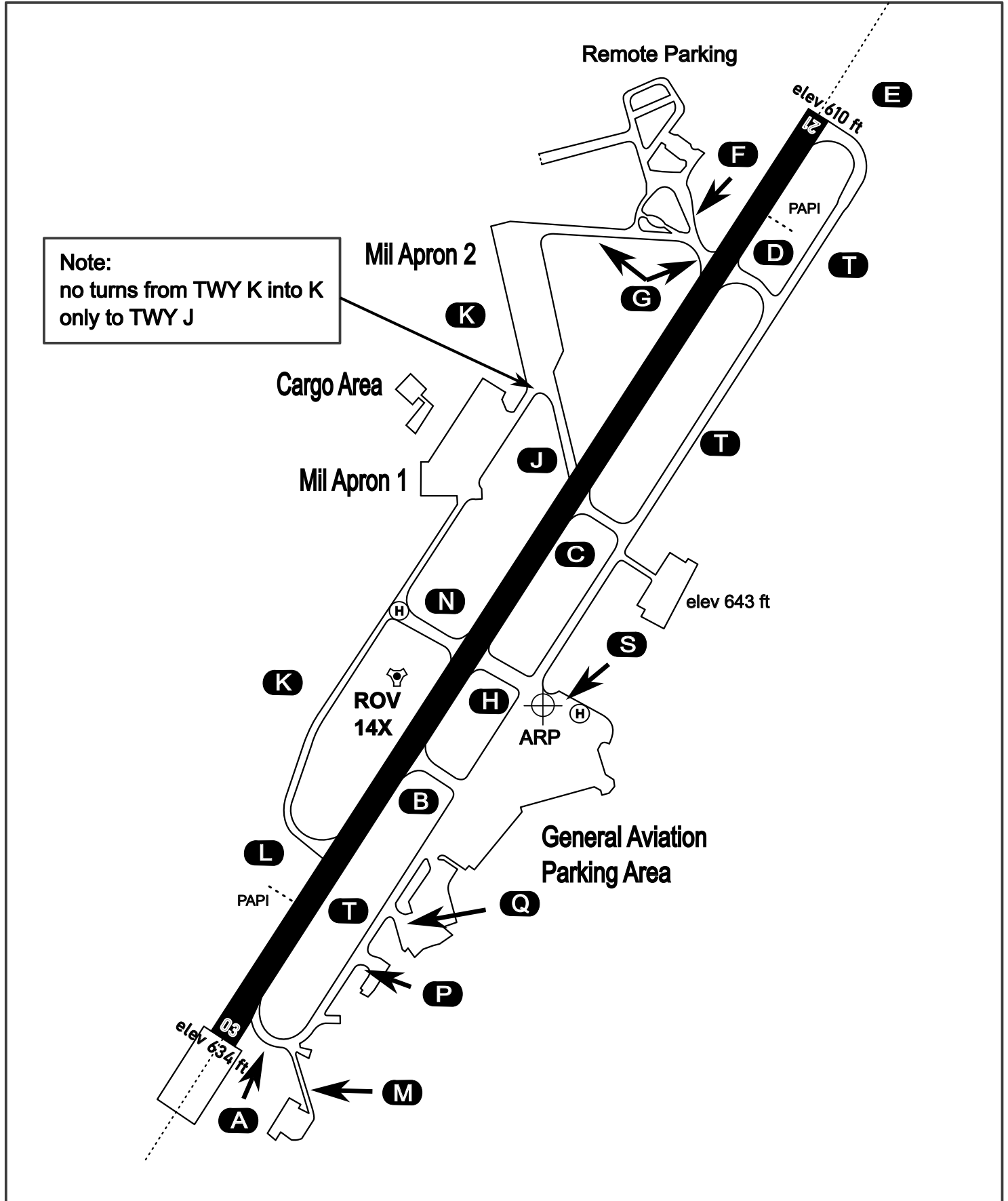
# AERODROME CHART

Rovaniemi Aerodrome

ARP N66° 33' 42" E025° 49' 51"

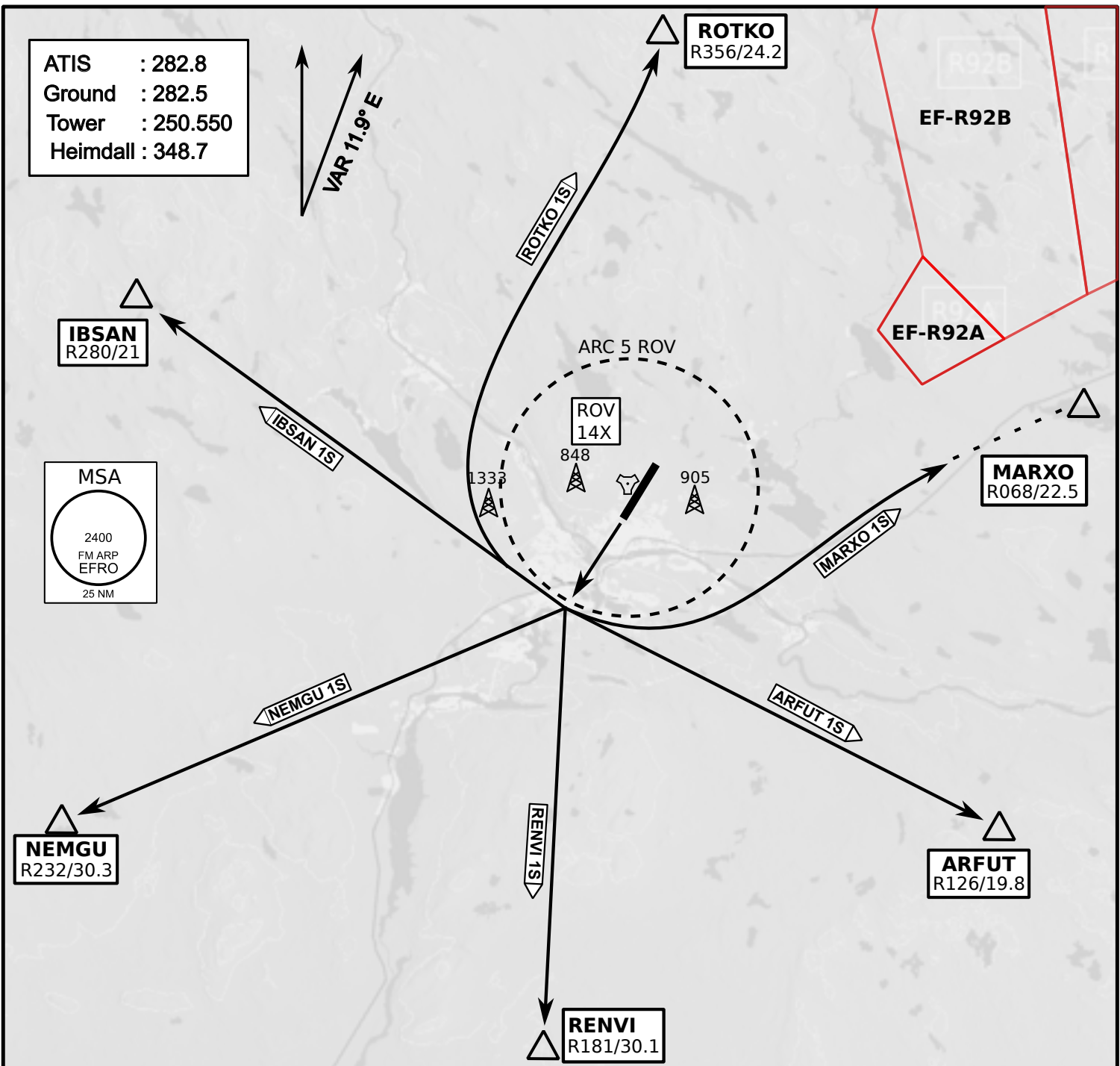
elev 643 ft

## ROVANIEMI, FINLAND



ATIS	Ground	Tower	Radar
282.800	282.500	250.550	348.700



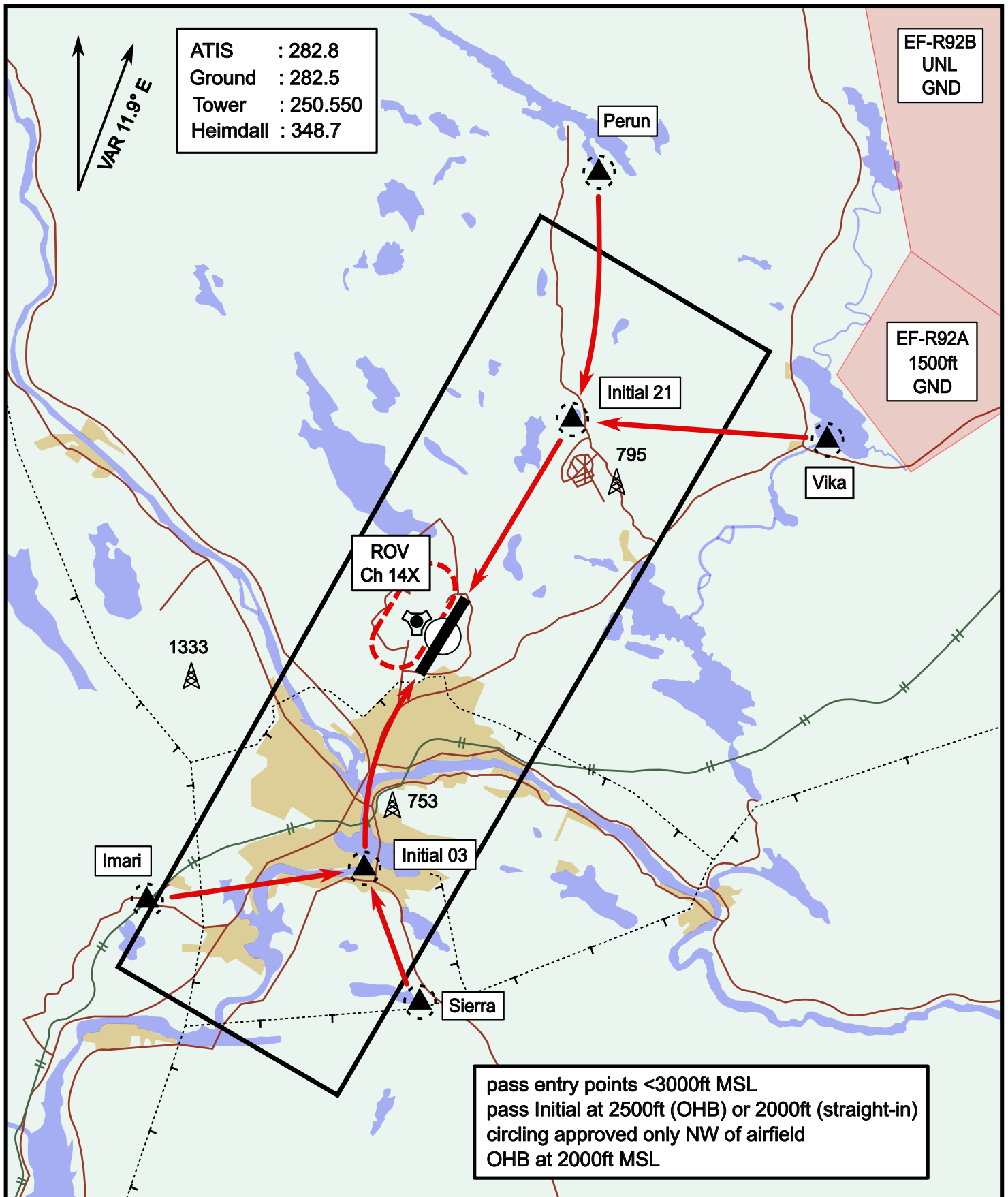


- Climb on Rwy heading to min A2000ft
- when passing A2000ft OR 5 DME ROV (whichever is later) turn direct exit point
- Stay outside ARC 5 ROV
- AB usage only if necessary for flight safety

# Visual Approach Jet

elev 643 ft

# Rovaniemi, Finland



Vika	N66° 37.474 / E026° 13.557	Sierra	N66° 25.711 / E025° 46.610
Perun	N66° 44.135 / E026° 01.630	Imari	N66° 28.406 / E025° 31.291
Initial21	N66° 38.421 / E025° 58.682	Initial03	N66° 28.793 / E025° 44.105