

**MISSION DATA CARD**

OPORD		Callsign		Mission		Date/Time		
3626/2025		Monster 1		Training		071900FEB25		
Task	FAM Flight					Freq		
AO	Visit ESR03-6					132.15		
Departure				Recovery				
VFR Departure				VFR Approach				
#	Callsign		Pilot		IFF	TCN	LSR	NET
-1	Monster 1-1		Lenzi		1411	1Y	1611	21/01

**LOADOUT**

A/A	2xA9M				GUN	100% CM	
A/G	2xA65G, 2xM82, 7M282L				CHF	240	
POD	TGP, A184L				FLR	240	
TKS					FUEL	80%	

**TOLD**

	Takeoff	Target	Joker	Bingo	Land
FUEL	8869				

**AIRBASES**

	Name	TCN	ATIS	GND	TWR	RWY	Elev	ILS
Dep	Rovaniemi	14X	282.8	282.5	250.55	21	643	111.7
Arr	Rovaniemi	14X	282.8	282.5	250.55	21	643	111.7

**FLIGHTPLAN**

#	Name	Navaid/Coords/DME	ALT	TOT
1	PERUN	N66 44.135 E026 01.630		
2	IMARI	N66 28.406 E025 31.291		
3	AMUBA	N67 22.100 E026 19.760		
4	ESR03	N66 E022 50.579		
5	ESR04	N65 55.086 E021 38.994		
6	ESR05	N65 42.852 E021 28.477		
7	ESR06	N65 24.003 E023 54.737		
8	SIERRA	N66 25.711 E025 46.610		
9	VIKA	N66 37.474 E026 13.557		
10	RVNInit21	N66 38.642 E025 58.682		
11	RVNInit03	N66 28.793 E025 44.105		

**COMMS**

Radio	Usage
1	132.15
2	2-3-4-16-2-4-3
3	32.00

## NOTES

ESR03 - MT & statics

ESR04 - CAS

ESR05 - ????

ESR06 - AntiShip

**SUPPORT****Tanker**

Callsign	TCN	Freq	ALT	TAS
TEXACO 1	71Y	265.0		
Pos				

**OTHER FLIGHTS**

Callsign	Mission	Airframe	Freq	TCN	Grpld	Laser
Edelweiss	Training	1x A-10C	264.05	1/64		170X
	AO		Task			
Raptor	Training	2x F-16C	134.0	1/64		162X
	AO		Task	SEAD Training SA-2		

## RADIO CHANNELS

#	Freq	Name
1		Flight/Squadron specific
2	282.8	Rovaniemi ATIS
3	282.5	Rovaniemi Ground
4	250.55	Rovaniemi Tower
5	320.7	Bodo ATIS
6	250.75	Bodo Tower
7	235.45	Kallax ATIS
8	250.3	Kallax Tower
9	265.0	Texaco-1   KC-135   Medium / Slow   71Y
10	319.8	Arco-1   KC-135   High / Fast   22Y
11	360.8	Shell-1   KC-135 MPRS   High / Fast   41Y
12	304.0	CVN-71 Rough Rider (RRR)   71X
13	303.0	LHA-1 Tarawa (TWA)   79X
14	247.8	S-3B Mauler-1 (MAU)  64Y
15	347.8	Loki (E-2D)
16	348.7	Heimdall (E-3A)
17	242.17	ESR02 - CAS Range Operator
18	34.7	ESR02 - JTAC Odin
19	270.5	Blue
20	270.75	Red

**RAMROD**

0	1	2	3	4	5	6	7	8	9
C	O	M	P	L	A	I	N	E	D

**KTC 1400 C**

	0	1	2	3	4	5	6	7	8	9
A	UPEN	GMK	CHF	SR	TL	DIY	AV	WB	JO	XQ
B	OJPT	IDS	GWV	LC	FQ	YKA	HN	RM	EU	XB
C	MCFD	VOQ	SUK	AN	LP	IHB	JW	YR	GT	XE
D	SUEI	MDJ	YQT	CH	FO	PGR	BX	NW	VL	KA
E	LQNW	RKO	HEG	XD	UV	AIC	PS	YJ	BT	MF
F	SDHJ	IUR	GPX	WY	NQ	BFT	CM	KO	LE	AV
G	PTYG	UVI	WCR	LN	XD	SHF	MQ	KA	OE	JB
H	BKQF	PVR	LYM	CU	OJ	ISE	XG	TD	AW	HN
I	OGAR	IDS	QNM	FV	TJ	KPC	LB	YX	WE	UH
J	HGIR	BAF	VNJ	YD	QK	XUT	SO	EP	CL	MW
K	MTSP	EFN	OGQ	DW	IY	RJA	KU	HB	VL	CX
L	TVFH	EIY	DCP	NB	SM	AOX	RG	JL	QU	WK
M	GDKU	QWR	VYM	LA	ET	HXP	CJ	OB	NI	FS
N	VYAR	EXN	GLW	SO	UC	HFP	MQ	DJ	KB	IT
O	OKBJ	SIU	MQR	XD	FE	ALN	TP	GC	VH	YW
P	TJYX	BFR	IEC	KS	QA	HUV	MD	NG	WP	LO
Q	GCFL	YEH	JBK	XV	OD	QUM	RA	WT	IN	SP
R	HYCS	NRX	QOM	DL	FJ	BUT	WV	KG	PI	AE
S	FTIG	OLW	XYD	ME	HU	KBQ	CJ	VP	RA	SN
T	UXMF	ECV	WGY	AQ	RL	SPI	NO	JH	KB	DT
U	XPIA	SRY	LET	KM	UJ	ODC	NH	QW	GF	BV
V	WFKU	CQI	LDS	BJ	TR	HXM	PA	YN	VG	OE
W	TXUW	SRL	NAJ	EP	GM	FVC	YI	DQ	HO	BK
X	BKHL	RPQ	YDC	AF	OS	XIW	NG	JT	UE	VM
Y	QDXC	RWK	UNV	OP	HY	LGM	FI	ST	EB	AJ

**NAVAIDS**

Id	Name	Channel	Position	Elevation
BOO	Bodo	45	N67 15.838 E014 20.046	43
BNK	Banak	47	N70 03.937 E024 58.181	17
OYA	Andoya	28	N69 17.175 E016 08.658	19



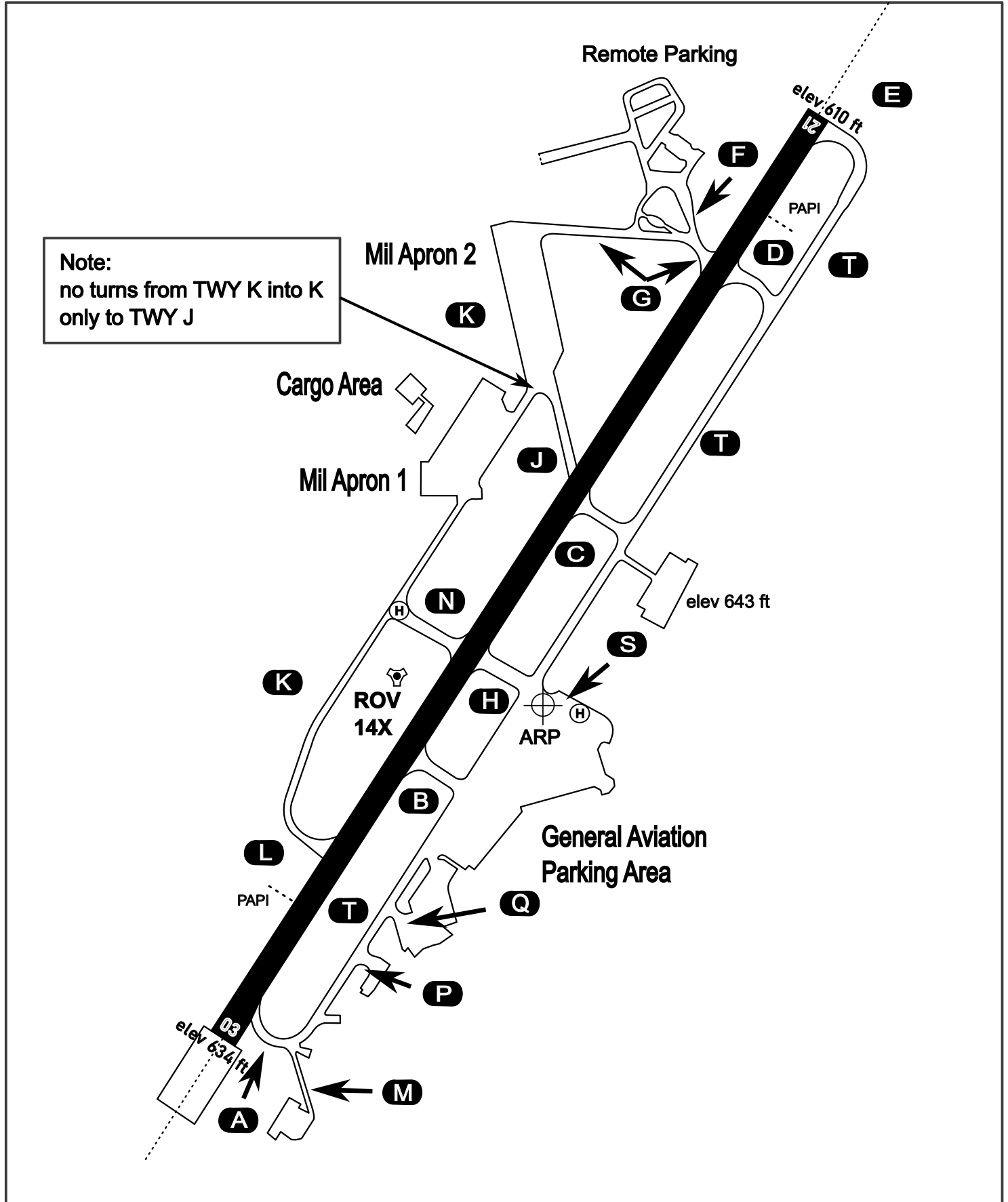
# AERODROME CHART

Rovaniemi Aerodrome

ARP N66° 33' 42" E025° 49' 51"

elev 643 ft

## ROVANIEMI, FINLAND

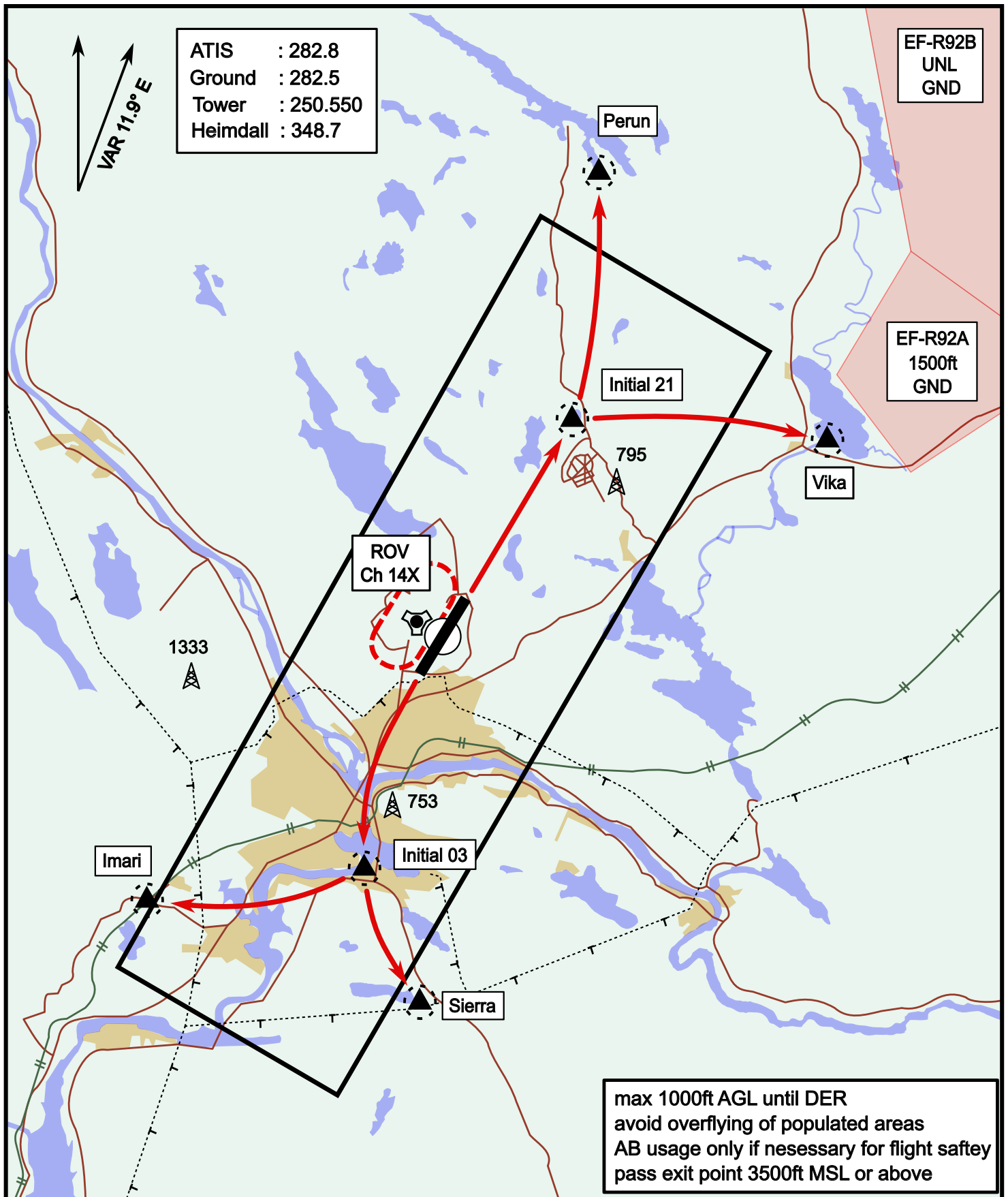


ATIS	Ground	Tower	Radar
282.800	282.500	250.550	348.700

# Visual Departure Jet

elev 643 ft

# Rovaniemi, Finland

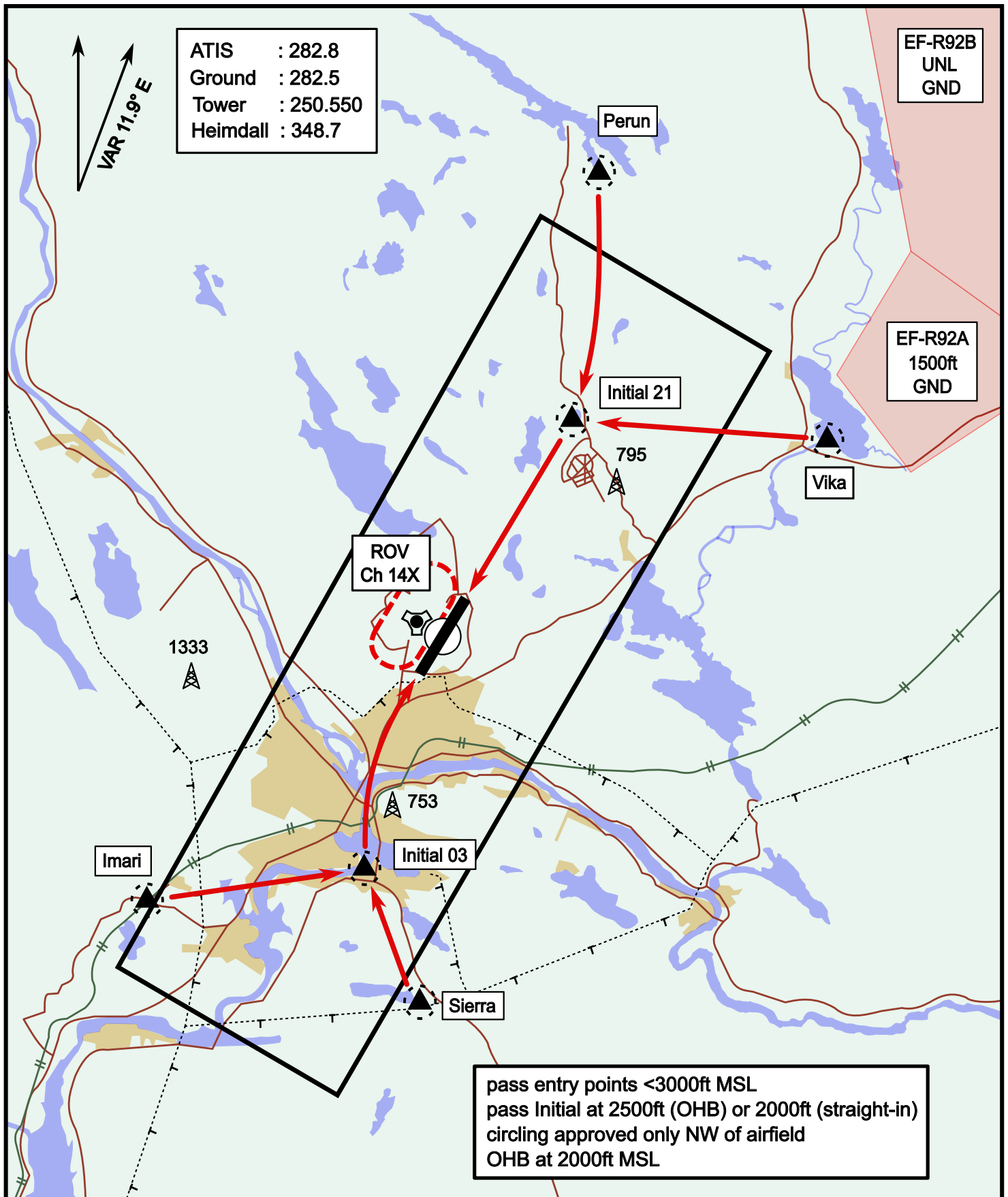


Vika	N66° 37.474 / E026° 13.557	Sierra	N66° 25.711 / E025° 46.610
Perun	N66° 44.135 / E026° 01.630	Imari	N66° 28.406 / E025° 31.291
Initial21	N66° 38.421 / E025° 58.682	Initial03	N66° 28.793 / E025° 44.105

# Visual Approach Jet

elev 643 ft

# Rovaniemi, Finland



Vika	N66° 37.474 / E026° 13.557	Sierra	N66° 25.711 / E025° 46.610
Perun	N66° 44.135 / E026° 01.630	Imari	N66° 28.406 / E025° 31.291
Initial21	N66° 38.421 / E025° 58.682	Initial03	N66° 28.793 / E025° 44.105