

MISSION DATA CARD

OPORD		Callsign		Mission		Date/Time		
3625/2025		Raptor		Training		071845FEB25		
Task	SEAD Training SA-2					Freq		
AO						134.0		
Departure				Recovery				
VFR Departure				VFR Approach				
#	Callsign		Pilot		IFF	TCN	LSR	NET
-1	Raptor-1		Void		1601	1Y	1621	

LOADOUT

A/A	2xA120B, 2xA9L				GUN	100% SAPHEI	
A/G	A88C, 2xC87				CHF	120	
POD	HTS, A184L, TGP				FLR	0	
TKS	2xFT300				FUEL	100%	

TOLD

	Takeoff	Target	Joker	Bingo	Land
FUEL	11169	9000	5000	3500	1500

AIRBASES

	Name	TCN	ATIS	GND	TWR	RWY	Elev	ILS
Dep	Rovaniemi	14X	282.8	282.5	250.55	21	643	111.7
Arr	Rovaniemi	14X	282.8	282.5	250.55	21	643	111.7

FLIGHTPLAN

#	Name	Navaid/Coords/DME	ALT	TOT
1	IMARI	N66 28.406 E025 31.291	3500	
2	IBSAN	N66 42.500 E025 01.083	15000	
3	NAFFI	N67 04.630 E023 11.660	22000	
4	SEPJA	N67 27.300 E021 12.080	22000	
5	T-ESR01 SA2	N68 28.397 E021 21.225	1854	
6	SEPJA	N67 27.300 E021 12.080	20000	
7	NAFFI	N67 04.630 E023 11.660	20000	
8	IBSAN	N66 42.500 E025 01.083	20000	
9	IMARI	N66 28.406 E025 31.291	3000	
10	RVNInit03	N66 28.793 E025 44.105	2000	

OTHER FLIGHTS

Callsign	Mission	Airframe	Freq	TCN	Grpld	Laser
Edelweiss	Training	1x A-10C	264.05	1/64		170X
AO		Task				
Monster 1	Training	4x A-10C	132.15	1/64	21	161X
AO	Visit ESR03-6	Task	FAM Flight			

RADIO CHANNELS

#	Freq	Name
1		Flight/Squadron specific
2	282.8	Rovaniemi ATIS
3	282.5	Rovaniemi Ground
4	250.55	Rovaniemi Tower
5	320.7	Bodo ATIS
6	250.75	Bodo Tower
7	235.45	Kallax ATIS
8	250.3	Kallax Tower
9	265.0	Texaco-1 KC-135 Medium / Slow 71Y
10	319.8	Arco-1 KC-135 High / Fast 22Y
11	360.8	Shell-1 KC-135 MPRS High / Fast 41Y
12	304.0	CVN-71 Rough Rider (RRR) 71X
13	303.0	LHA-1 Tarawa (TWA) 79X
14	247.8	S-3B Mauler-1 (MAU) 64Y
15	347.8	Loki (E-2D)
16	348.7	Heimdall (E-3A)
17	242.17	ESR02 - CAS Range Operator
18	34.7	ESR02 - JTAC Odin
19	270.5	Blue
20	270.75	Red

RAMROD

0	1	2	3	4	5	6	7	8	9
C	O	M	P	L	A	I	N	E	D

KTC 1400 C

	0	1	2	3	4	5	6	7	8	9
A	UPEN	GMK	CHF	SR	TL	DIY	AV	WB	JO	XQ
B	OJPT	IDS	GWV	LC	FQ	YKA	HN	RM	EU	XB
C	MCFD	VOQ	SUK	AN	LP	IHB	JW	YR	GT	XE
D	SUEI	MDJ	YQT	CH	FO	PGR	BX	NW	VL	KA
E	LQNW	RKO	HEG	XD	UV	AIC	PS	YJ	BT	MF
F	SDHJ	IUR	GPX	WY	NQ	BFT	CM	KO	LE	AV
G	PTYG	UVI	WCR	LN	XD	SHF	MQ	KA	OE	JB
H	BKQF	PVR	LYM	CU	OJ	ISE	XG	TD	AW	HN
I	OGAR	IDS	QNM	FV	TJ	KPC	LB	YX	WE	UH
J	HGIR	BAF	VNJ	YD	QK	XUT	SO	EP	CL	MW
K	MTSP	EFN	OGQ	DW	IY	RJA	KU	HB	VL	CX
L	TVFH	EIY	DCP	NB	SM	AOX	RG	JL	QU	WK
M	GDKU	QWR	VYM	LA	ET	HXP	CJ	OB	NI	FS
N	VYAR	EXN	GLW	SO	UC	HFP	MQ	DJ	KB	IT
O	OKBJ	SIU	MQR	XD	FE	ALN	TP	GC	VH	YW
P	TJYX	BFR	IEC	KS	QA	HUV	MD	NG	WP	LO
Q	GCFL	YEH	JBK	XV	OD	QUM	RA	WT	IN	SP
R	HYCS	NRX	QOM	DL	FJ	BUT	WV	KG	PI	AE
S	FTIG	OLW	XYD	ME	HU	KBQ	CJ	VP	RA	SN
T	UXMF	ECV	WGY	AQ	RL	SPI	NO	JH	KB	DT
U	XPIA	SRY	LET	KM	UJ	ODC	NH	QW	GF	BV
V	WFKU	CQI	LDS	BJ	TR	HXM	PA	YN	VG	OE
W	TXUW	SRL	NAJ	EP	GM	FVC	YI	DQ	HO	BK
X	BKHL	RPQ	YDC	AF	OS	XIW	NG	JT	UE	VM
Y	QDXC	RWK	UNV	OP	HY	LGM	FI	ST	EB	AJ

NAVAIDS

Id	Name	Channel	Position	Elevation
BOO	Bodo	45	N67 15.838 E014 20.046	43
BNK	Banak	47	N70 03.937 E024 58.181	17
OYA	Andoya	28	N69 17.175 E016 08.658	19

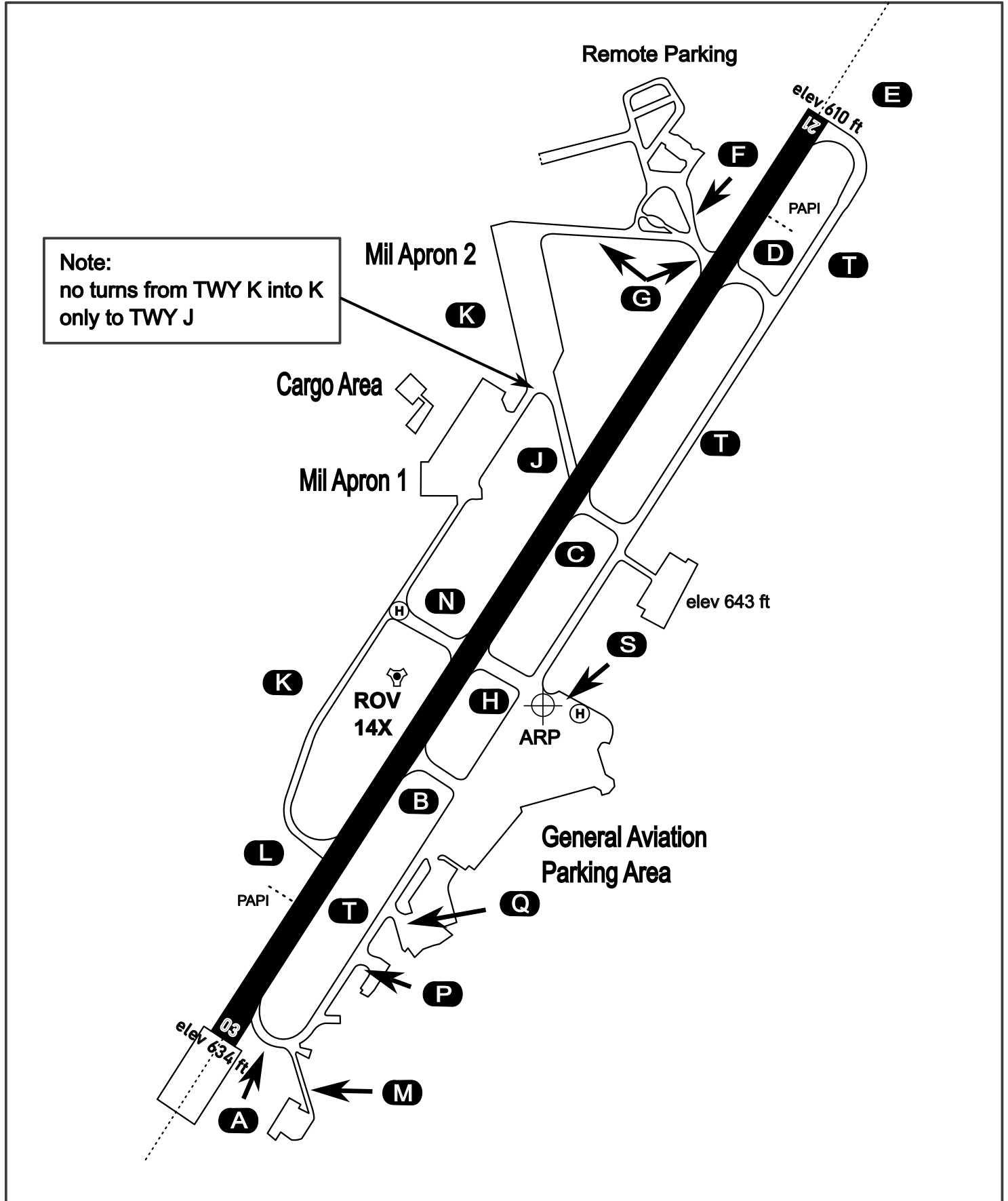
AERODROME CHART

Rovaniemi Aerodrome

ARP N66° 33' 42" E025° 49' 51"

elev 643 ft

ROVANIEMI, FINLAND

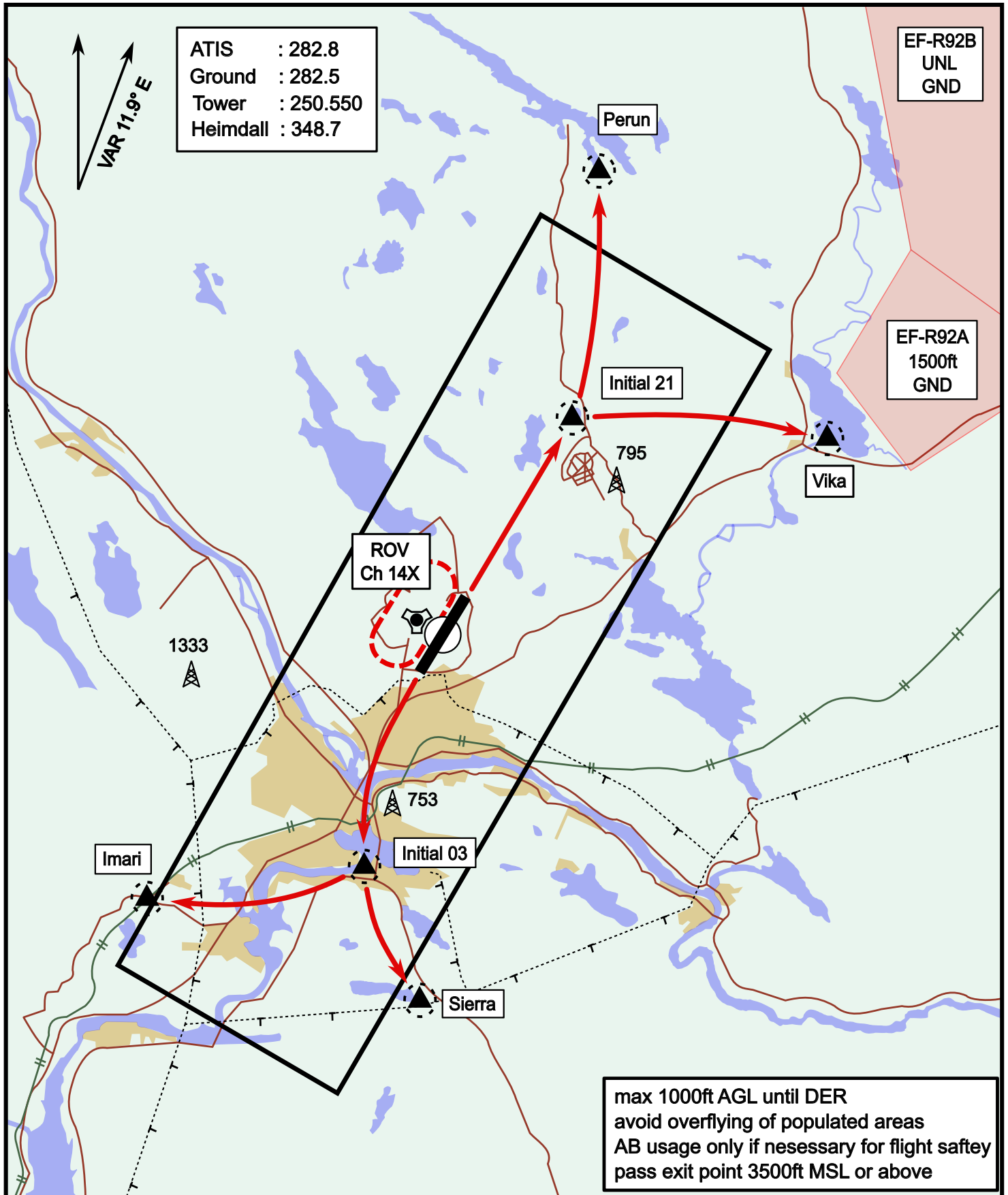


ATIS	Ground	Tower	Radar
282.800	282.500	250.550	348.700

Visual Departure Jet

elev 643 ft

Rovaniemi, Finland

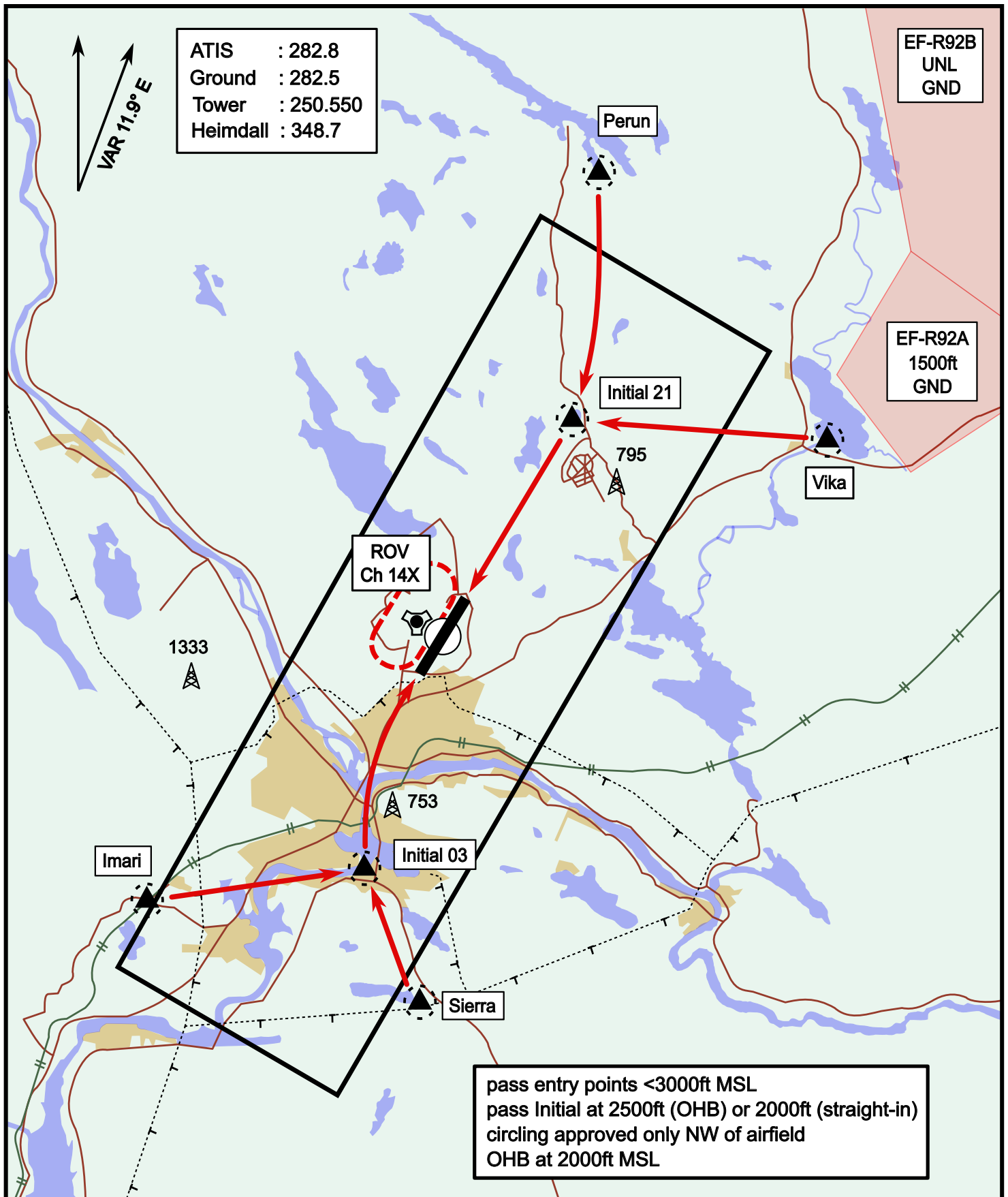


Vika	N66° 37.474 / E026° 13.557
Perun	N66° 44.135 / E026° 01.630
Initial21	N66° 38.421 / E025° 58.682
Sierra	N66° 25.711 / E025° 46.610
Imari	N66° 28.406 / E025° 31.291
Initial03	N66° 28.793 / E025° 44.105

Visual Approach Jet

elev 643 ft

Rovaniemi, Finland



Vika	N66° 37.474 / E026° 13.557	Sierra	N66° 25.711 / E025° 46.610
Perun	N66° 44.135 / E026° 01.630	Imari	N66° 28.406 / E025° 31.291
Initial21	N66° 38.421 / E025° 58.682	Initial03	N66° 28.793 / E025° 44.105