

MISSION DATA CARD

OPORD		Callsign		Mission		Date/Time	
3622/2025		Wolf*		Training		062000FEB25	
Task							Freq
AO							264.05
Departure				Recovery			
VFR Helicopter				VFR Helicopter			
#	Callsign	Pilot		IFF	TCN	LSR	NET
-1	Wolf*-1	Laud		1701	1Y	1701	
-2	Wolf*-2	Hudson		1702	64Y	1702	
-3	Wolf*-3	Mütze		1703	64X	1703	

LOADOUT

A/A						GUN	
A/G						CHF	
POD						FLR	
TKS						FUEL	

TOLD

	Takeoff	Target	Joker	Bingo	Land
FUEL	2513				

AIRBASES

	Name	TCN	ATIS	GND	TWR	RWY	Elev	ILS
Dep	Rovaniemi	14X	282.8	282.5	250.55	21	643	111.7
Arr	Rovaniemi	14X	282.8	282.5	250.55	21	643	111.7

FLIGHTPLAN

#	Name	Navaid/Coords/DME	ALT	TOT
1	FARP KIMI	N66 37.764 E026 22.775		
2	R92B-ENTRY-SOUTH	N66 39.117 E026 25.200		
3	R92B-RP EAST	N66 44.217 E026 26.250		
4	R92B-BP HUNTER	N66 47.250 E026 28.283		

COMMS

Radio	Usage
1	133.5
2	250.55

OTHER FLIGHTS

Callsign	Mission	Airframe	Freq	TCN	Grpld	Laser
Raptor 1	Training	4x F-16C	134.0	1/64		162X
AO		Task	FAM Flight			
Monster 1	Training	4x A-10C	132.15	1/64	21	161X
AO	Visit ESR03-6	Task	FAM Flight			
Raptor 2	Training	4x F-16C	134.5	2/65		162X
AO		Task	FAM Flight			
Nazgul 6	Training	4x F-15E	262.45	1/64		156X
AO	R92C / ESR03	Task	A/G Moving Targets Training			
Tiger 1	Training	4x F/A-18C	261.15	1/64	1	155X
AO		Task	FAM-Flight			
Panther 2	Training	4x F/A-18C	261.25	1/64	2	156X
AO		Task	FAM-Flight			
T-Rex 1	Training	4x A-10C	132.25	1/64	22	161X
AO	Visit ESR03-6	Task	FAM Flight			

RADIO CHANNELS

#	Freq	Name
1		Flight/Squadron specific
2	282.8	Rovaniemi ATIS
3	282.5	Rovaniemi Ground
4	250.55	Rovaniemi Tower
5	320.7	Bodo ATIS
6	250.75	Bodo Tower
7	235.45	Kallax ATIS
8	250.3	Kallax Tower
9	265.0	Texaco-1 KC-135 Medium / Slow 71Y
10	319.8	Arco-1 KC-135 High / Fast 22Y
11	360.8	Shell-1 KC-135 MPRS High / Fast 41Y
12	304.0	CVN-71 Rough Rider (RRR) 71X
13	303.0	LHA-1 Tarawa (TWA) 79X
14	247.8	S-3B Mauler-1 (MAU) 64Y
15	347.8	Loki (E-2D)
16	348.7	Heimdall (E-3A)
17	242.17	ESR02 - CAS Range Operator
18	34.7	ESR02 - JTAC Odin
19	270.5	Blue
20	270.75	Red

RAMROD										
0	1	2	3	4	5	6	7	8	9	
C	R	E	D	I	T	A	B	L	Y	
KTC 1400 C										
	0	1	2	3	4	5	6	7	8	9
A	JMBV	TOU	NXQ	SA	YH	IWC	GE	KD	FR	PL
B	FTDW	NAR	PUQ	GE	MB	HIY	XJ	CS	OV	LK
C	DGAN	CMQ	VEH	XY	RJ	OIL	WF	BK	SP	TU
D	OTVI	JKR	BWU	MD	NS	HXA	GY	CQ	EL	PF
E	QKUR	NHB	CIT	OX	PA	GYS	EJ	LV	DW	MF
F	JVIO	UMG	HLB	RK	CA	NXY	EP	FD	QT	SW
G	TBGF	CQL	XVU	ON	KY	EJH	AR	PI	DW	MS
H	NIOA	PGB	LKD	JY	MU	TSE	FR	VX	WH	CQ
I	OAXC	WYN	ETM	BK	FD	HPG	IR	SL	QU	VJ
J	SKRL	YEJ	CMF	PT	DN	QGX	UA	WO	VB	HI
K	JUMH	LKY	DEO	AX	PN	BFR	VC	QT	GW	IS
L	ETWN	DRC	YAV	JU	LB	HGX	IF	MO	PS	QK
M	CMRN	BSJ	FXT	IO	WG	EAL	YH	PU	QV	DK
N	KHJA	IFW	CEP	UD	RX	YON	QS	LV	MG	BT
O	PRGS	KVC	LHN	QW	IA	XDF	YE	TU	MO	JB
P	AKGR	CDJ	HPY	TM	UF	NIS	WB	EO	VX	LQ
Q	TLSM	YEA	BNW	JH	CF	KRQ	XO	VU	IG	PD
R	CKFS	MTI	OVN	AD	XG	HYW	UB	LP	EQ	RJ
S	LHNO	YIF	EKB	DM	RT	VWS	JA	XP	CQ	GU
T	TKIH	AXQ	NEF	PD	YJ	UWG	LR	VB	MS	CO
U	KMSN	AEF	URV	HJ	GT	OBW	XQ	CL	IY	PD
V	LBCM	GUV	OWT	AJ	FD	HKX	SI	YQ	PN	RE
W	CQLP	VXD	AER	TH	JN	MSU	OB	KG	YI	FW
X	JWYH	UEG	FQL	RC	KN	VSB	TA	IO	MP	XD
Y	AQUX	RGY	LSD	KP	IF	WVN	JH	OB	CT	EM

NAVAIDS

Id	Name	Channel	Position	Elevation
BOO	Bodo	45	N67 15.838 E014 20.046	43
BNK	Banak	47	N70 03.937 E024 58.181	17
OYA	Andoya	28	N69 17.175 E016 08.658	19

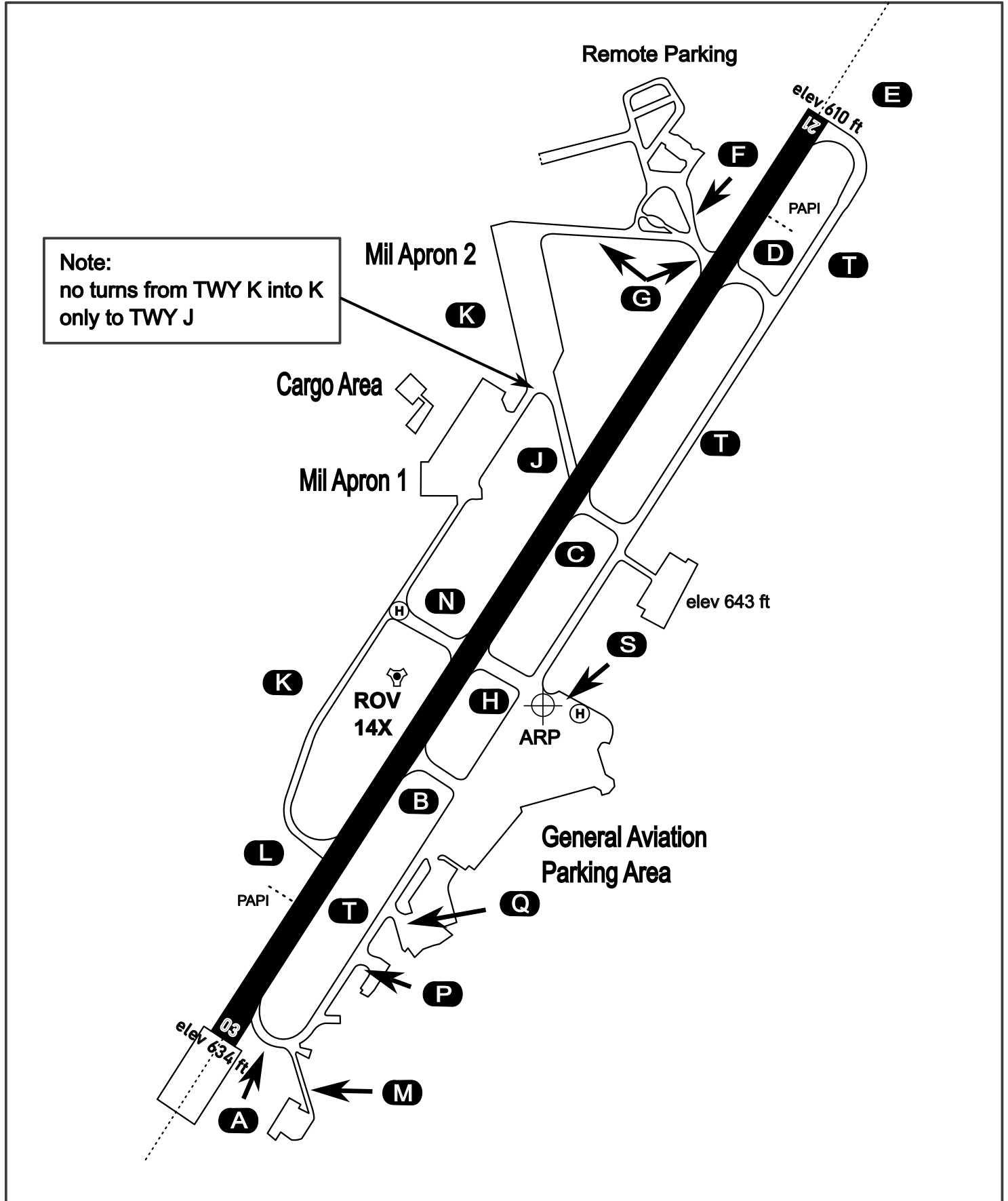
AERODROME CHART

Rovaniemi Aerodrome

ARP N66° 33' 42" E025° 49' 51"

elev 643 ft

ROVANIEMI, FINLAND

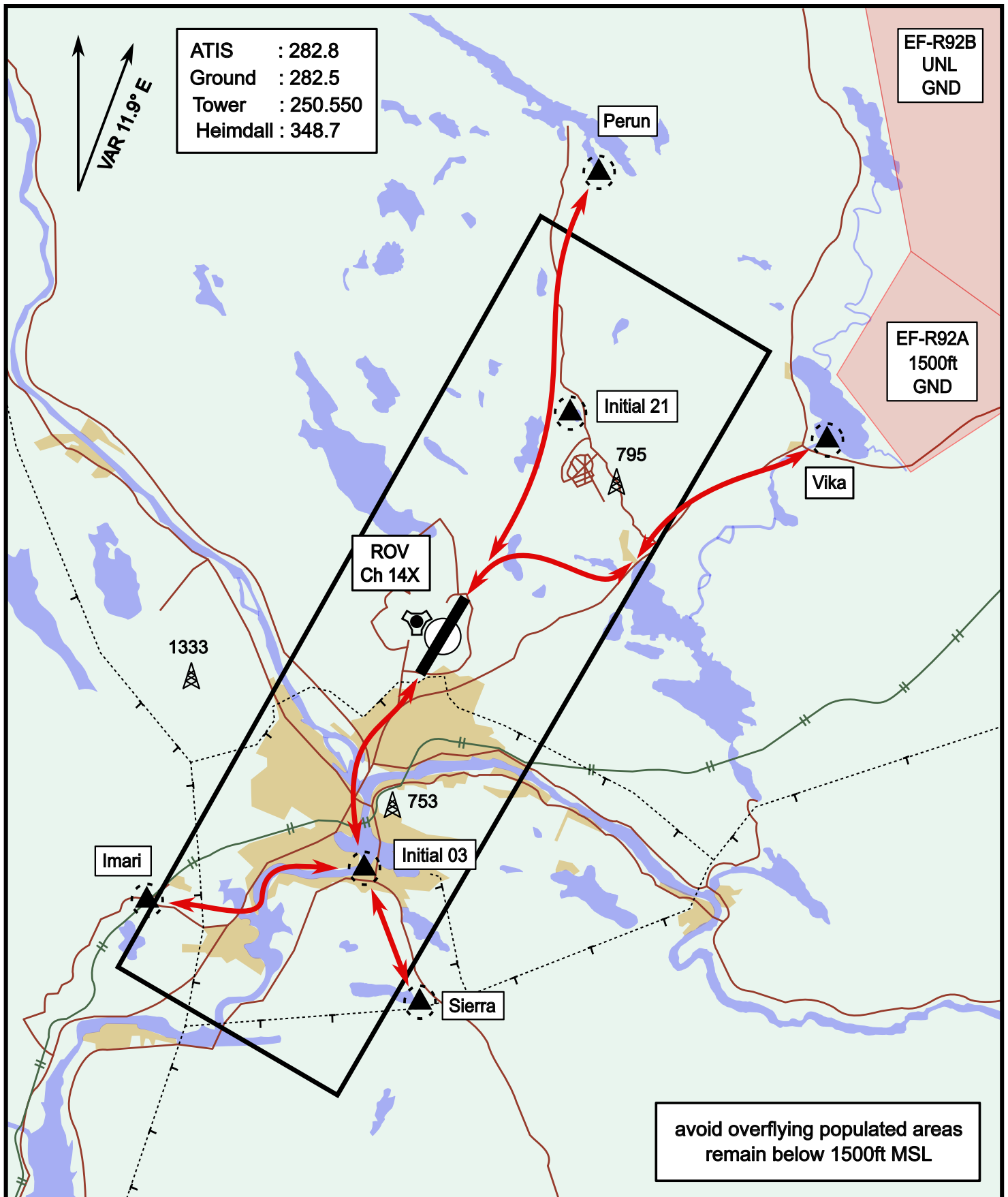


ATIS	Ground	Tower	Radar
282.800	282.500	250.550	348.700

Helicopter Routing

elev 643 ft

Rovaniemi, Finland

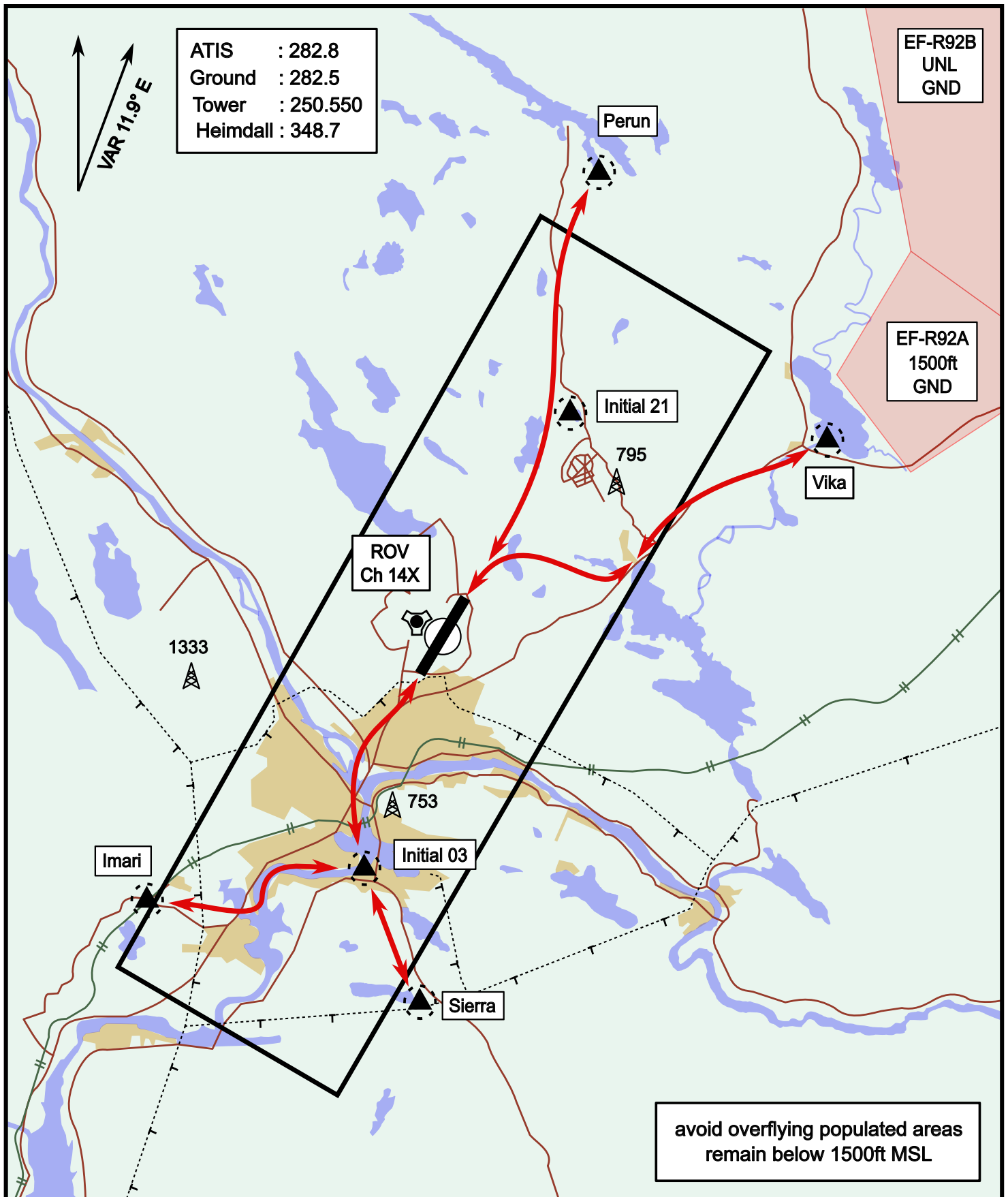


Vika	N66° 37.474 / E026° 13.557	Sierra	N66° 25.711 / E025° 46.610
Perun	N66° 44.135 / E026° 01.630	Imari	N66° 28.406 / E025° 31.291
Initial21	N66° 38.421 / E025° 58.682	Initial03	N66° 28.793 / E025° 44.105

Helicopter Routing

elev 643 ft

Rovaniemi, Finland



Vika	N66° 37.474 / E026° 13.557	Sierra	N66° 25.711 / E025° 46.610
Perun	N66° 44.135 / E026° 01.630	Imari	N66° 28.406 / E025° 31.291
Initial21	N66° 38.421 / E025° 58.682	Initial03	N66° 28.793 / E025° 44.105