

MISSION DATA CARD

OPORD		Callsign		Mission		Date/Time	
3618/2025		Tiger 1		Training		062200FEB25	
Task	FAM-Flight					Freq	
AO						261.15	
Departure				Recovery			
VFR Departure				VFR Approach			
#	Callsign	Pilot		IFF	TCN	LSR	NET
-1	Tiger 1-1	Ghost		1011	1Y	1551	01/01
-2	Tiger 1-2	Jemi		1012	64Y	1552	01/02
-3	Tiger 1-3	Hawk		1013	64X	1553	01/03
-4	Tiger 1-4	Kosmoss		1014	1X	1554	01/04

LOADOUT

A/A	2xA9X, A120C				GUN	100% HEI-T	
A/G					CHF	90	
POD	TGP				FLR	30	
TKS	3xFPU-8A				FUEL	100%	

TOLD

	Takeoff	Target	Joker	Bingo	Land		
FUEL	17535			4000			

AIRBASES

	Name	TCN	ATIS	GND	TWR	RWY	Elev	ILS
Dep	Rovaniemi	14X	282.8	282.5	250.55	21	643	111.7
Arr	Rovaniemi	14X	282.8	282.5	250.55	21	643	111.7
Div	Kallax		235.45		250.3	32	66	109.9

FLIGHTPLAN

#	Name	Navaid/Coords/DME	ALT	TOT
1	PERUN	N66 44 08.120 E026 01 37.812	3000	
2	VIKA	N66 37 28.469 E026 13 33.460	3000	
3	SIERRA	N66 25 42.681 E025 46 36.642	3000	
4	IMARI	N66 28 24.377 E025 31 17.480	3000	
5	RENOVI	N66 04 33.600 E025 31 54.003	15000	
6	Kemi Tornio	N65 46 53.344 E024 34 56.221	3000	
7	7	N65 39 45.037 E022 59 44.997	3000	
8	Kallax	N65 32 37.629 E022 07 18.722	3000	
9	9	N65 52 57.581 E022 19 46.341	3000	
10	10	N66 35 08.832 E022 35 50.014	3000	
11	ITVAV	N66 44 37.836 E019 56 45.628	25000	
12	SEPJA	N67 27 18.033 E021 12 04.808	25000	
13	13	N67 47 45.639 E021 17 37.061	25000	
14	14	N68 31 08.530 E022 01 45.975	25000	
15	NAFFI	N67 04 37.837 E023 11 40.006	25000	
16	IBSAN	N66 42 30.019 E025 01 04.824	10000	
17	Rovaniemi	N66 33 53.445 E025 49 49.755	2000	

COMMS

Radio	Usage
1	2(Atis), 3(RG), 4(RT), 16(HD), 11(SH-1), 16(HD), 4(RT), 3(RG)
2	Inhouse 261.15
3	MIDS A:22 / B:44

NOTES

Overlord = HEIMDALL

SUPPORT**Tanker**

Callsign	TCN	Freq	ALT	TAS
SHELL 1	41Y	360.8		
	Pos			

AWACS

Callsign	Freq	ALT	Pos
HEIMDALL	348.7		

OTHER FLIGHTS

Callsign	Mission	Airframe	Freq	TCN	Grpld	Laser
Raptor 1	Training	4x F-16C	134.0	1/64		162X
AO		Task	FAM Flight			
Monster 1	Training	4x A-10C	132.15	1/64	21	161X
AO	Visit ESR03-6	Task	FAM Flight			
Raptor 2	Training	4x F-16C	134.5	2/65		162X
AO		Task	FAM Flight			
Nazgul 6	Training	4x F-15E	262.45	1/64		156X
AO	R92C / ESR03	Task	A/G Moving Targets Training			
Panther 2	Training	4x F/A-18C	261.25	1/64	2	156X
AO		Task	FAM-Flight			
T-Rex 1	Training	4x A-10C	132.25	1/64	22	161X
AO	Visit ESR03-6	Task	FAM Flight			
Wolf*	Training	4x AH-64D	264.05	1/64		170X
AO		Task				

RADIO CHANNELS

#	Freq	Name
1		Flight/Squadron specific
2	282.8	Rovaniemi ATIS
3	282.5	Rovaniemi Ground
4	250.55	Rovaniemi Tower
5	320.7	Bodo ATIS
6	250.75	Bodo Tower
7	235.45	Kallax ATIS
8	250.3	Kallax Tower
9	265.0	Texaco-1 KC-135 Medium / Slow 71Y
10	319.8	Arco-1 KC-135 High / Fast 22Y
11	360.8	Shell-1 KC-135 MPRS High / Fast 41Y
12	304.0	CVN-71 Rough Rider (RRR) 71X
13	303.0	LHA-1 Tarawa (TWA) 79X
14	247.8	S-3B Mauler-1 (MAU) 64Y
15	347.8	Loki (E-2D)
16	348.7	Heimdall (E-3A)
17	242.17	ESR02 - CAS Range Operator
18	34.7	ESR02 - JTAC Odin
19	270.5	Blue
20	270.75	Red

RAMROD

0	1	2	3	4	5	6	7	8	9
C	R	E	D	I	T	A	B	L	Y

KTC 1400 C

	0	1	2	3	4	5	6	7	8	9
A	JMBV	TOU	NXQ	SA	YH	IWC	GE	KD	FR	PL
B	FTDW	NAR	PUQ	GE	MB	HIY	XJ	CS	OV	LK
C	DGAN	CMQ	VEH	XY	RJ	OIL	WF	BK	SP	TU
D	OTVI	JKR	BWU	MD	NS	HXA	GY	CQ	EL	PF
E	QKUR	NHB	CIT	OX	PA	GYS	EJ	LV	DW	MF
F	JVIO	UMG	HBL	RK	CA	NXY	EP	FD	QT	SW
G	TBGF	CQL	XVU	ON	KY	EJH	AR	PI	DW	MS
H	NIOA	PGB	LKD	JY	MU	TSE	FR	VX	WH	CQ
I	OAXC	WYN	ETM	BK	FD	HPG	IR	SL	QU	VJ
J	SKRL	YEJ	CMF	PT	DN	QGX	UA	WO	VB	HI
K	JUMH	LKY	DEO	AX	PN	BFR	VC	QT	GW	IS
L	ETWN	DRC	YAV	JU	LB	HGX	IF	MO	PS	QK
M	CMRN	BSJ	FXT	IO	WG	EAL	YH	PU	QV	DK
N	KHJA	IFW	CEP	UD	RX	YON	QS	LV	MG	BT
O	PRGS	KVC	LHN	QW	IA	XDF	YE	TU	MO	JB
P	AKGR	CDJ	HPY	TM	UF	NIS	WB	EO	VX	LQ
Q	TLSM	YEA	BNW	JH	CF	KRQ	XO	VU	IG	PD
R	CKFS	MTI	OVN	AD	XG	HYW	UB	LP	EQ	RJ
S	LHNO	YIF	EKB	DM	RT	VWS	JA	XP	CQ	GU
T	TKIH	AXQ	NEF	PD	YJ	UWG	LR	VB	MS	CO
U	KMSN	AEF	URV	HJ	GT	OBW	XQ	CL	IY	PD
V	LBCM	GUV	OWT	AJ	FD	HKX	SI	YQ	PN	RE
W	CQLP	VXD	AER	TH	JN	MSU	OB	KG	YI	FW
X	JWYH	UEG	FQL	RC	KN	VSB	TA	IO	MP	XD
Y	AQUX	RGY	LSD	KP	IF	WVN	JH	OB	CT	EM

NAVAIDS

Id	Name	Channel	Position	Elevation
BOO	Bodo	45	N67 15.838 E014 20.046	43
BNK	Banak	47	N70 03.937 E024 58.181	17
OYA	Andoya	28	N69 17.175 E016 08.658	19

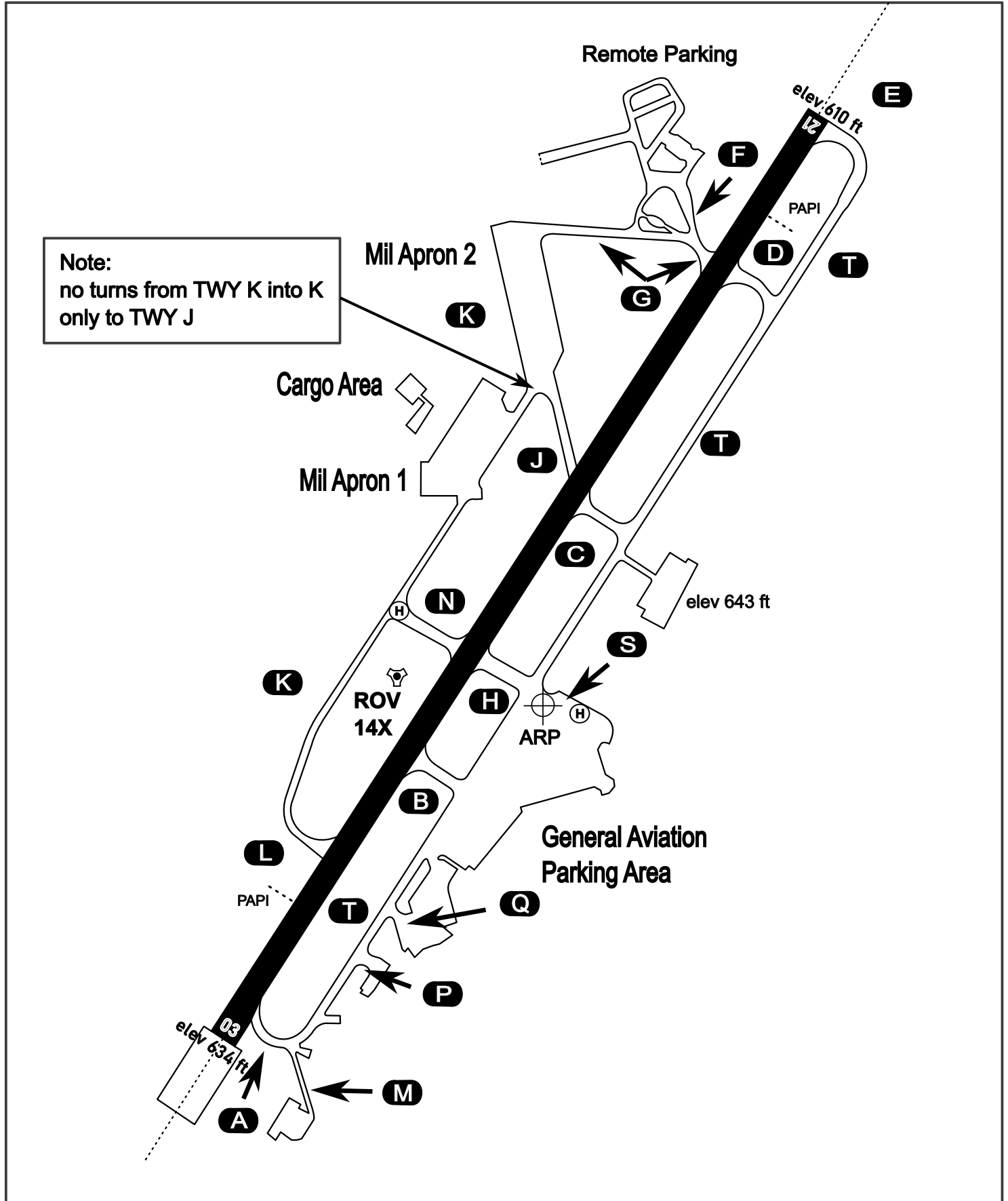
AERODROME CHART

Rovaniemi Aerodrome

ARP N66° 33' 42" E025° 49' 51"

elev 643 ft

ROVANIEMI, FINLAND

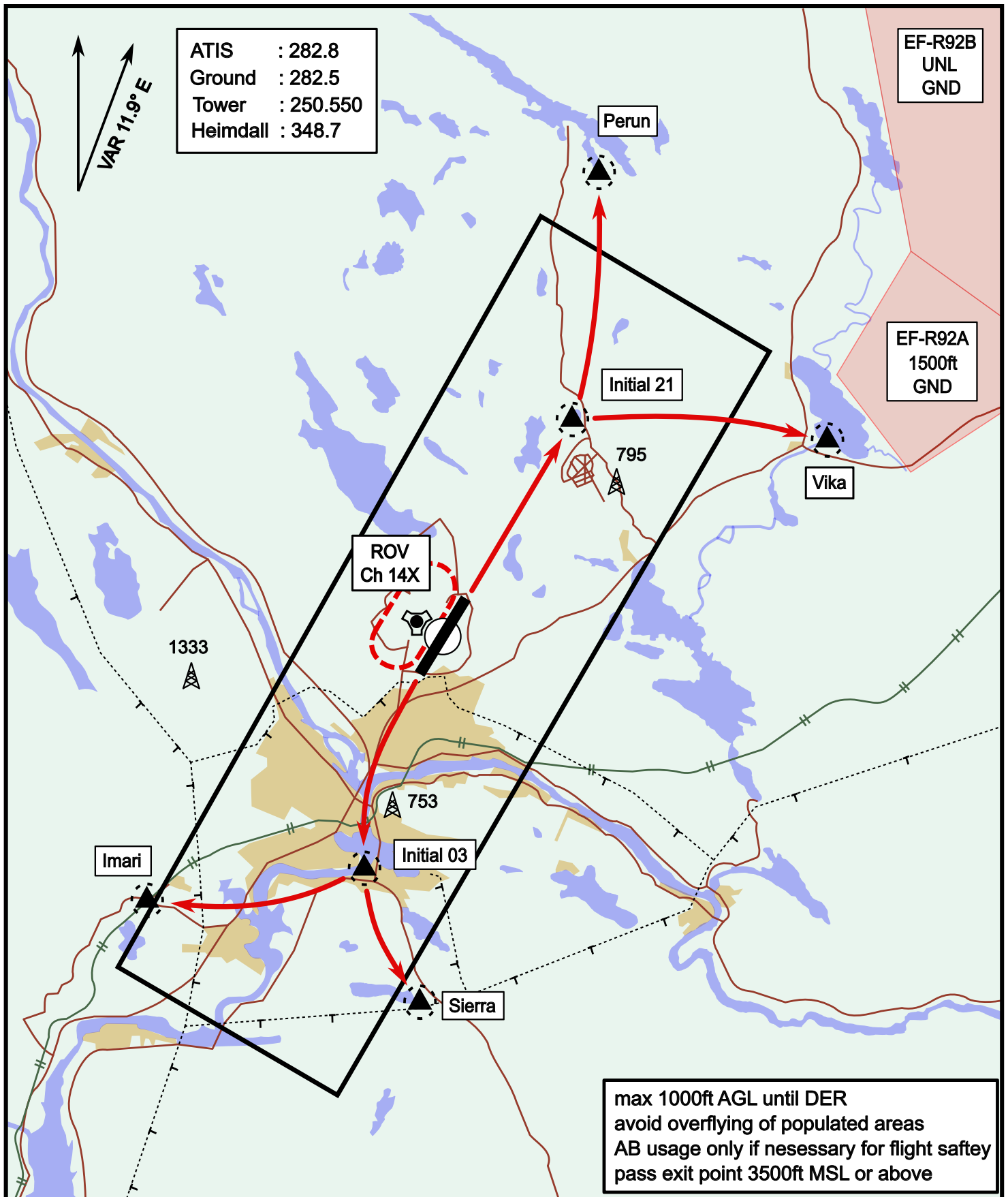


ATIS	Ground	Tower	Radar
282.800	282.500	250.550	348.700

Visual Departure Jet

elev 643 ft

Rovaniemi, Finland

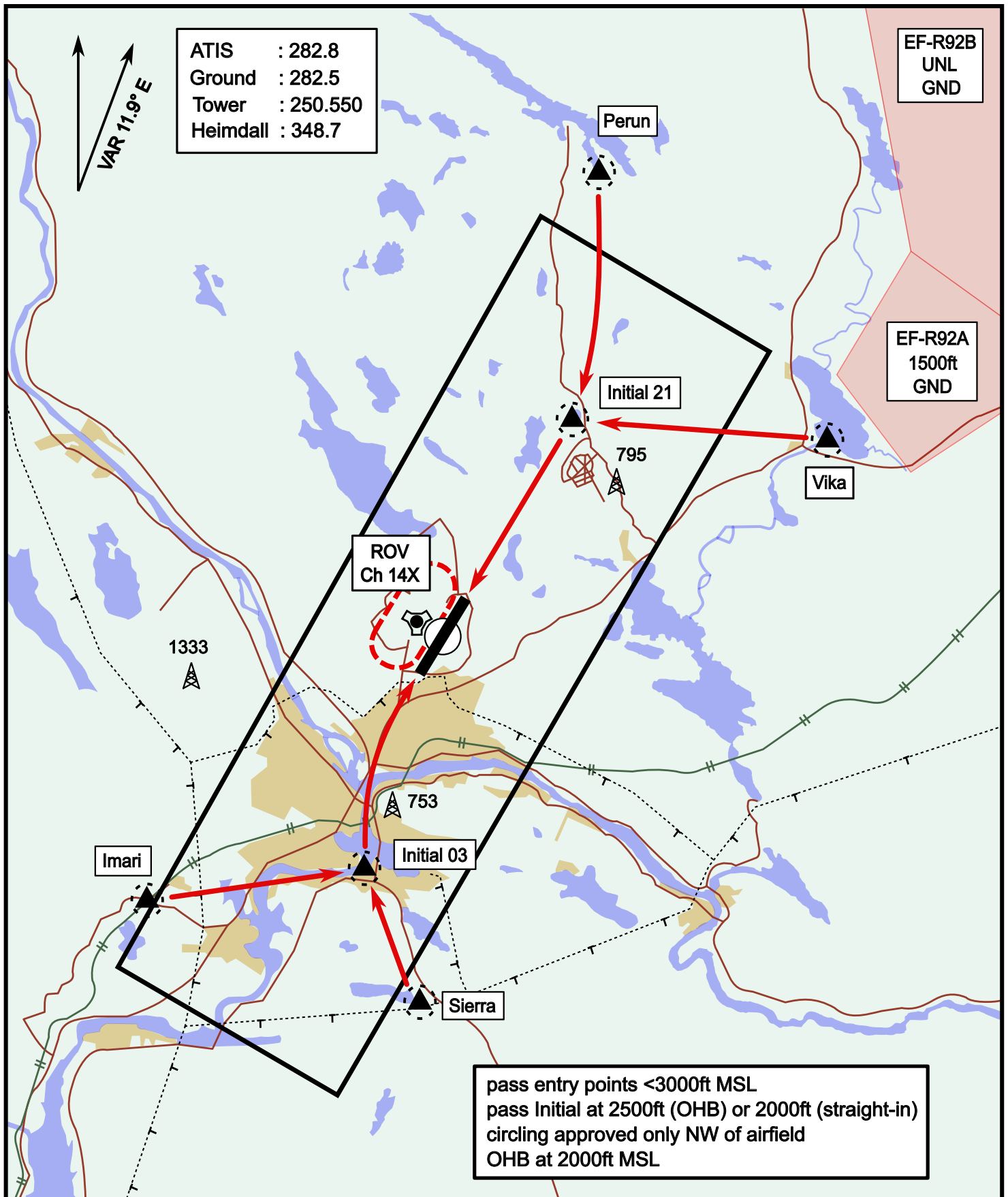


Vika	N66° 37.474 / E026° 13.557	Sierra	N66° 25.711 / E025° 46.610
Perun	N66° 44.135 / E026° 01.630	Imari	N66° 28.406 / E025° 31.291
Initial21	N66° 38.421 / E025° 58.682	Initial03	N66° 28.793 / E025° 44.105

Visual Approach Jet

elev 643 ft

Rovaniemi, Finland



Vika	N66° 37.474 / E026° 13.557	Sierra	N66° 25.711 / E025° 46.610
Perun	N66° 44.135 / E026° 01.630	Imari	N66° 28.406 / E025° 31.291
Initial21	N66° 38.421 / E025° 58.682	Initial03	N66° 28.793 / E025° 44.105

NOT AVAILABLE

NOT AVAILABLE