

**MISSION DATA CARD**

OPORD		Callsign		Mission		Date/Time	
3617/2025		Nazgul 6		Training		062000FEB25	
Task	A/G Moving Targets Training					Freq	
AO	R92C / ESR03					262.45	
Departure				Recovery			
VFR Departure				VFR Approach			
#	Callsign	Pilot		IFF	TCN	LSR	NET
-1	Nazgul 6-1	Striver		1161	1Y	1561	
-2	Nazgul 6-2	Razorback		1162	64Y	1562	
-3	Nazgul 6-3	Repsus		1163	64X	1563	

**LOADOUT**

A/A	2xA9M, 2xA120C				GUN	100% SAPHEI
A/G	6xM82SE, G24, 4xG12				CHF	0
POD	TGT, NAV				FLR	120
TKS	2xFT610				FUEL	100%

**TOLD**

	Takeoff	Target	Joker	Bingo	Land
FUEL	30518				

**AIRBASES**

	Name	TCN	ATIS	GND	TWR	RWY	Elev	ILS
Dep	Rovaniemi	14X	282.8	282.5	250.55	21	643	111.7
Arr	Rovaniemi	14X	282.8	282.5	250.55	21	643	111.7
Div	Kemi Tornio	106X			250.3	36	62	110.9

**FLIGHTPLAN**

#	Name	Navaid/Coords/DME	ALT	TOT
1	IMARI	N66 28.406 E025 31.291	3000	
2	RVNInit03	N66 28.793 E025 44.105		
3	Rovaniemi	N66 33.890 E025 49.821	582	
4	RVNInit21	N66 38.642 E025 58.682		
5	VIKA	N66 37.474 E026 13.557	3500	
6	R92C	N66 48.330 E026 40.210	646	
7	T-ESR03-08 (APC)	N65 59.460 E023 16.190	266	
8	T-ESR03-09 (Boat)	N65 52.240 E023 04.040	5	

## OTHER FLIGHTS

Callsign	Mission	Airframe	Freq	TCN	Grpld	Laser
Raptor 1	Training	4x F-16C	134.0	1/64		162X
AO		Task	FAM Flight			
Monster 1	Training	4x A-10C	132.15	1/64	21	161X
AO	Visit ESR03-6	Task	FAM Flight			
Raptor 2	Training	4x F-16C	134.5	2/65		162X
AO		Task	FAM Flight			
Tiger 1	Training	4x F/A-18C	261.15	1/64	1	155X
AO		Task	FAM-Flight			
Panther 2	Training	4x F/A-18C	261.25	1/64	2	156X
AO		Task	FAM-Flight			
T-Rex 1	Training	4x A-10C	132.25	1/64	22	161X
AO	Visit ESR03-6	Task	FAM Flight			
Wolf*	Training	4x AH-64D	264.05	1/64		170X
AO		Task				

## RADIO CHANNELS

#	Freq	Name
1		Flight/Squadron specific
2	282.8	Rovaniemi ATIS
3	282.5	Rovaniemi Ground
4	250.55	Rovaniemi Tower
5	320.7	Bodo ATIS
6	250.75	Bodo Tower
7	235.45	Kallax ATIS
8	250.3	Kallax Tower
9	265.0	Texaco-1   KC-135   Medium / Slow   71Y
10	319.8	Arco-1   KC-135   High / Fast   22Y
11	360.8	Shell-1   KC-135 MPRS   High / Fast   41Y
12	304.0	CVN-71 Rough Rider (RRR)   71X
13	303.0	LHA-1 Tarawa (TWA)   79X
14	247.8	S-3B Mauler-1 (MAU)  64Y
15	347.8	Loki (E-2D)
16	348.7	Heimdall (E-3A)
17	242.17	ESR02 - CAS Range Operator
18	34.7	ESR02 - JTAC Odin
19	270.5	Blue
20	270.75	Red

**RAMROD**

0	1	2	3	4	5	6	7	8	9
C	R	E	D	I	T	A	B	L	Y

**KTC 1400 C**

	0	1	2	3	4	5	6	7	8	9
A	JMBV	TOU	NXQ	SA	YH	IWC	GE	KD	FR	PL
B	FTDW	NAR	PUQ	GE	MB	HIY	XJ	CS	OV	LK
C	DGAN	CMQ	VEH	XY	RJ	OIL	WF	BK	SP	TU
D	OTVI	JKR	BWU	MD	NS	HXA	GY	CQ	EL	PF
E	QKUR	NHB	CIT	OX	PA	GYS	EJ	LV	DW	MF
F	JVIO	UMG	HBL	RK	CA	NXY	EP	FD	QT	SW
G	TBGF	CQL	XVU	ON	KY	EJH	AR	PI	DW	MS
H	NIOA	PGB	LKD	JY	MU	TSE	FR	VX	WH	CQ
I	OAXC	WYN	ETM	BK	FD	HPG	IR	SL	QU	VJ
J	SKRL	YEJ	CMF	PT	DN	QGX	UA	WO	VB	HI
K	JUMH	LKY	DEO	AX	PN	BFR	VC	QT	GW	IS
L	ETWN	DRC	YAV	JU	LB	HGX	IF	MO	PS	QK
M	CMRN	BSJ	FXT	IO	WG	EAL	YH	PU	QV	DK
N	KHJA	IFW	CEP	UD	RX	YON	QS	LV	MG	BT
O	PRGS	KVC	LHN	QW	IA	XDF	YE	TU	MO	JB
P	AKGR	CDJ	HPY	TM	UF	NIS	WB	EO	VX	LQ
Q	TLSM	YEA	BNW	JH	CF	KRQ	XO	VU	IG	PD
R	CKFS	MTI	OVN	AD	XG	HYW	UB	LP	EQ	RJ
S	LHNO	YIF	EKB	DM	RT	VWS	JA	XP	CQ	GU
T	TKIH	AXQ	NEF	PD	YJ	UWG	LR	VB	MS	CO
U	KMSN	AEF	URV	HJ	GT	OBW	XQ	CL	IY	PD
V	LBCM	GUV	OWT	AJ	FD	HKX	SI	YQ	PN	RE
W	CQLP	VXD	AER	TH	JN	MSU	OB	KG	YI	FW
X	JWYH	UEG	FQL	RC	KN	VSB	TA	IO	MP	XD
Y	AQUX	RGY	LSD	KP	IF	WVN	JH	OB	CT	EM

**NAVAIDS**

Id	Name	Channel	Position	Elevation
BOO	Bodo	45	N67 15.838 E014 20.046	43
BNK	Banak	47	N70 03.937 E024 58.181	17
OYA	Andoya	28	N69 17.175 E016 08.658	19

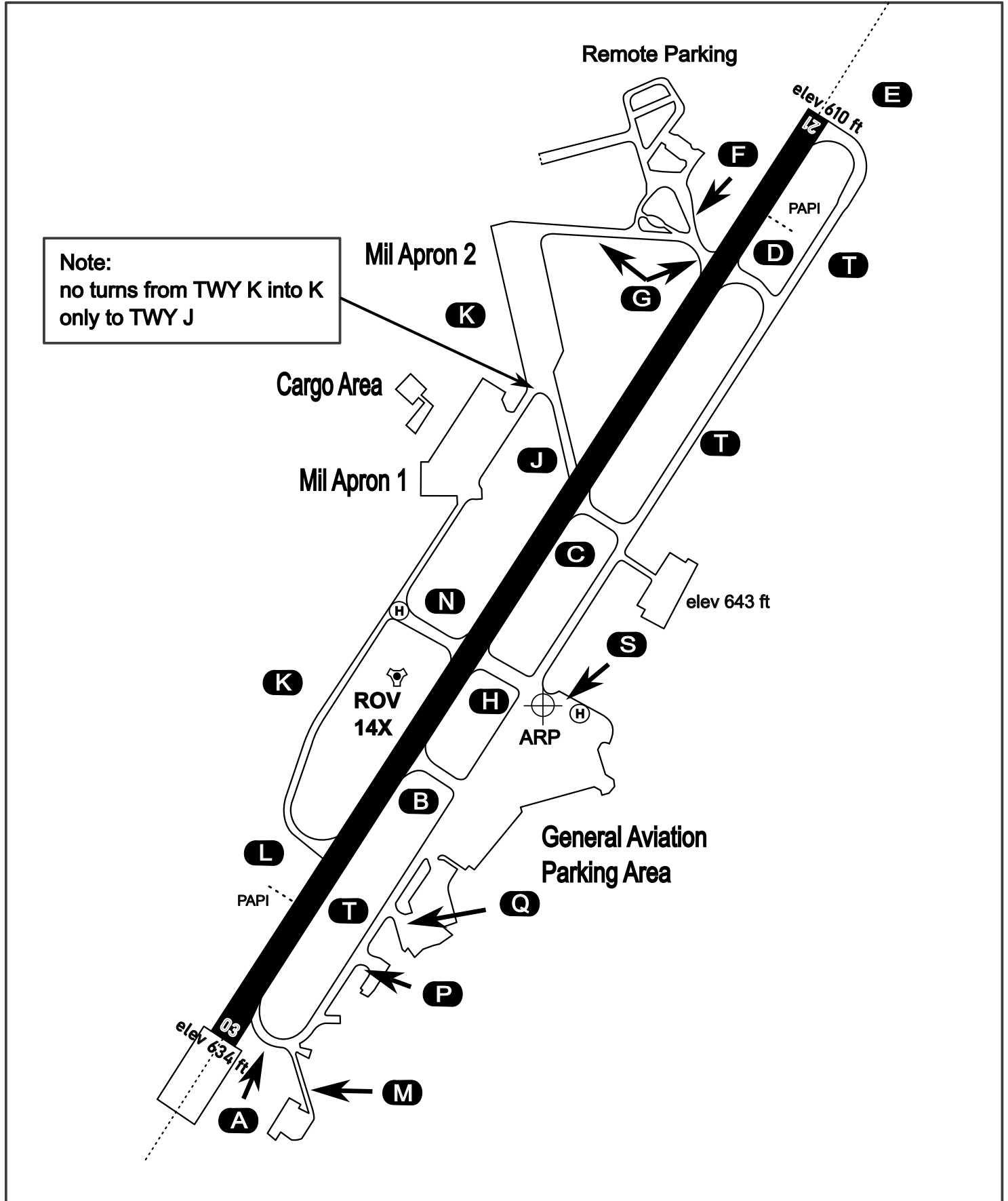
# AERODROME CHART

Rovaniemi Aerodrome

ARP N66° 33' 42" E025° 49' 51"

elev 643 ft

## ROVANIEMI, FINLAND

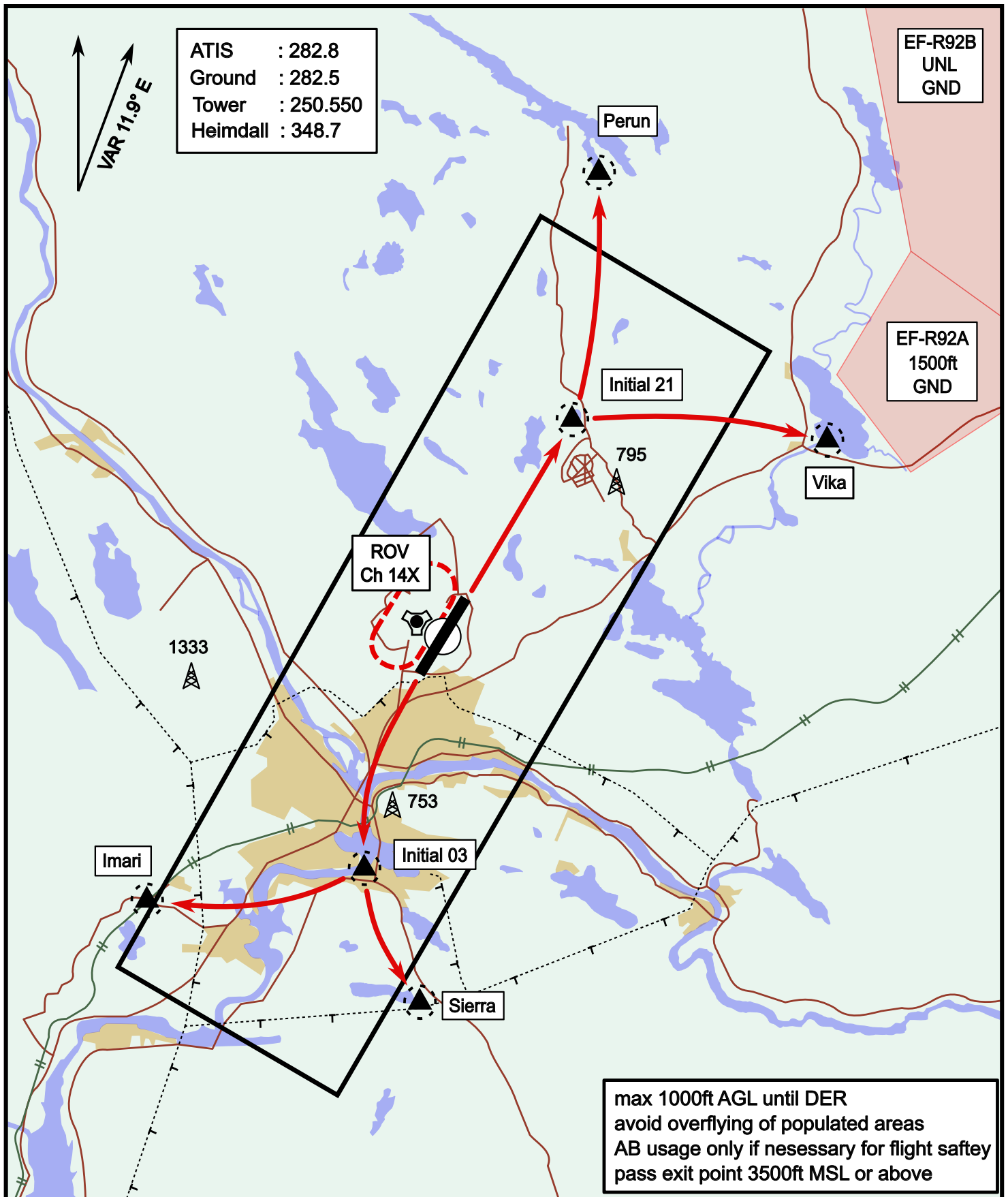


ATIS	Ground	Tower	Radar
282.800	282.500	250.550	348.700

# Visual Departure Jet

elev 643 ft

# Rovaniemi, Finland



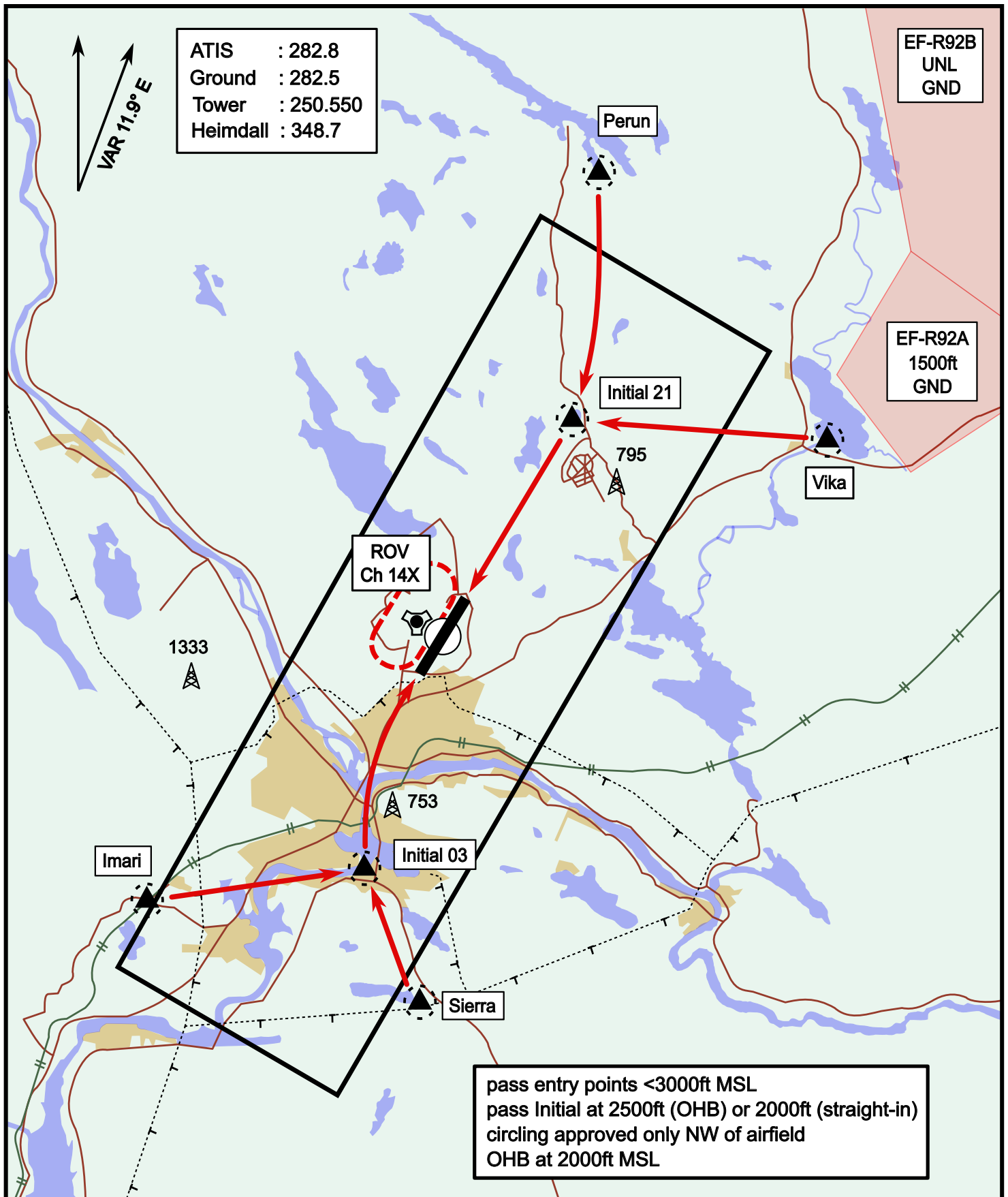
Vika	N66° 37.474 / E026° 13.557	Sierra	N66° 25.711 / E025° 46.610
Perun	N66° 44.135 / E026° 01.630	Imari	N66° 28.406 / E025° 31.291
Initial21	N66° 38.421 / E025° 58.682	Initial03	N66° 28.793 / E025° 44.105



# Visual Approach Jet

elev 643 ft

# Rovaniemi, Finland



Vika	N66° 37.474 / E026° 13.557	Sierra	N66° 25.711 / E025° 46.610
Perun	N66° 44.135 / E026° 01.630	Imari	N66° 28.406 / E025° 31.291
Initial21	N66° 38.421 / E025° 58.682	Initial03	N66° 28.793 / E025° 44.105

**NOT AVAILABLE**

**NOT AVAILABLE**