

MISSION DATA CARD

OPORD		Callsign		Mission		Date/Time		
3612/2025		Raptor 1		Training		041249FEB25		
Task						Freq		
AO						134.0		
Departure				Recovery				
SID RWY 03				ILS RWY 21				
#	Callsign		Pilot		IFF	TCN	LSR	NET
-1	Raptor 1-1		Jinx		1611	1Y	1621	

LOADOUT

A/A						GUN	
A/G						CHF	
POD						FLR	
TKS						FUEL	

TOLD

	Takeoff	Target	Joker	Bingo	Land
FUEL	7163				

AIRBASES

	Name	TCN	ATIS	GND	TWR	RWY	Elev	ILS
Dep	Rovaniemi	14X	282.8	282.5	250.55	21	643	111.7
Arr	Rovaniemi	14X	282.8	282.5	250.55	21	643	111.7

FLIGHTPLAN

#	Name	Navaid/Coords/DME	ALT	TOT
1	NEMGU	N66 20.400 E024 41.650	10000	
2	IMARI	N66 28 24.377 E025 31 17.480	3000	
3	IBSAN	N66 42 30.019 E025 01 04.824	15000	
4	NAFFI	N67 04 37.837 E023 11 40.006	23000	
5	SEPJA	N67 27 18.033 E021 12 04.808	23000	
6	Entry ERS01	N67 47 25.437 E021 06 56.183	23000	
7	Holding IP	N67 59 47.394 E021 07 34.343	20000	
8	ESR01 SA2	N68 28 24.337 E021 21 08.680	1854	
9	PERUN	N66 44 08.120 E026 01 37.812	3000	
10	Initial 21	N66 38 25.261 E025 58 40.958	2500	
11	Rovaniemi	N66 33 53.445 E025 49 49.755	636	

SUPPORT**Tanker**

Callsign	TCN	Freq	ALT	TAS
ARCO 1	22Y	319.8		
Pos				

RADIO CHANNELS

#	Freq	Name
1		Flight/Squadron specific
2	282.8	Rovaniemi ATIS
3	282.5	Rovaniemi Ground
4	250.55	Rovaniemi Tower
5	320.7	Bodo ATIS
6	250.75	Bodo Tower
7	235.45	Kallax ATIS
8	250.3	Kallax Tower
9	265.0	Texaco-1 KC-135 Medium / Slow 71Y
10	319.8	Arco-1 KC-135 High / Fast 22Y
11	360.8	Shell-1 KC-135 MPRS High / Fast 41Y
12	304.0	CVN-71 Rough Rider (RRR) 71X
13	303.0	LHA-1 Tarawa (TWA) 79X
14	247.8	S-3B Mauler-1 (MAU) 64Y
15	347.8	Loki (E-2D)
16	348.7	Heimdall (E-3A)
17	242.17	ESR02 - CAS Range Operator
18	34.7	ESR02 - JTAC Odin
19	270.5	Blue
20	270.75	Red

RAMROD

0	1	2	3	4	5	6	7	8	9
D	E	C	O	R	A	T	I	N	G

KTC 1400 C

	0	1	2	3	4	5	6	7	8	9
A	IOBU	JGX	QDR	EV	YN	CKF	AW	SH	PM	TL
B	EIYG	LQF	SAR	KX	TN	UOM	VD	BH	WC	JP
C	DEWC	SGH	QKU	LB	RY	XMT	VO	JN	AI	FP
D	HBGC	NQR	IYJ	DX	UT	SVE	AW	ML	KO	PF
E	AMWO	EJB	QDG	RU	VI	FHK	SY	LP	TC	NX
F	NCEW	KIY	QAM	PX	HU	RST	GV	OD	JL	BF
G	SMAB	LRF	HEC	WD	UK	OQV	GN	YP	JI	TX
H	USMP	EFX	HIY	TR	VQ	GNB	OD	KA	JL	WC
I	KDHR	MIX	SEU	NP	CW	TOY	FV	LB	GJ	QA
J	KDLJ	PFQ	UWH	XN	GE	ABS	OC	MI	VR	YT
K	IRJF	YEW	OQA	DP	LU	XST	MH	CK	NG	VB
L	TGFB	QHY	UIV	KL	JW	OCM	XS	NP	AE	RD
M	ERSD	MXG	YPW	UL	TK	IQO	NJ	VC	HF	BA
N	JOER	THY	SXL	CF	DG	WBP	VI	UM	AQ	NK
O	SQFC	WJR	PXL	YO	GK	MNU	IV	DT	BH	EA
P	DUHI	YTC	XFP	BN	VO	LEG	JA	RK	WM	QS
Q	MHXW	JUK	NDS	IC	QV	OLR	GF	BT	PY	AE
R	TAJV	KPI	RDO	FN	YL	UHQ	GX	ES	CB	WM
S	RBAF	KOI	WEL	YM	JS	DGT	PC	NV	HX	QU
T	XRNF	SKM	WJG	CA	EY	ODT	IH	LQ	VP	BU
U	ARBL	UQV	PSY	CJ	DX	GIE	MT	FH	OK	WN
V	KQYF	GMW	EJR	PU	IX	TVN	BD	OL	HA	CS
W	PUMA	CDY	BIR	WG	ES	KLJ	VX	QN	FH	OT
X	TGAE	UYN	KWJ	FH	XO	VBP	SI	MQ	CD	LR
Y	LBAV	IJX	SKY	FP	WO	GQH	DU	ME	RC	TN

NAVAIDS

Id	Name	Channel	Position	Elevation
BOO	Bodo	45	N67 15.838 E014 20.046	43
BNK	Banak	47	N70 03.937 E024 58.181	17
OYA	Andoya	28	N69 17.175 E016 08.658	19

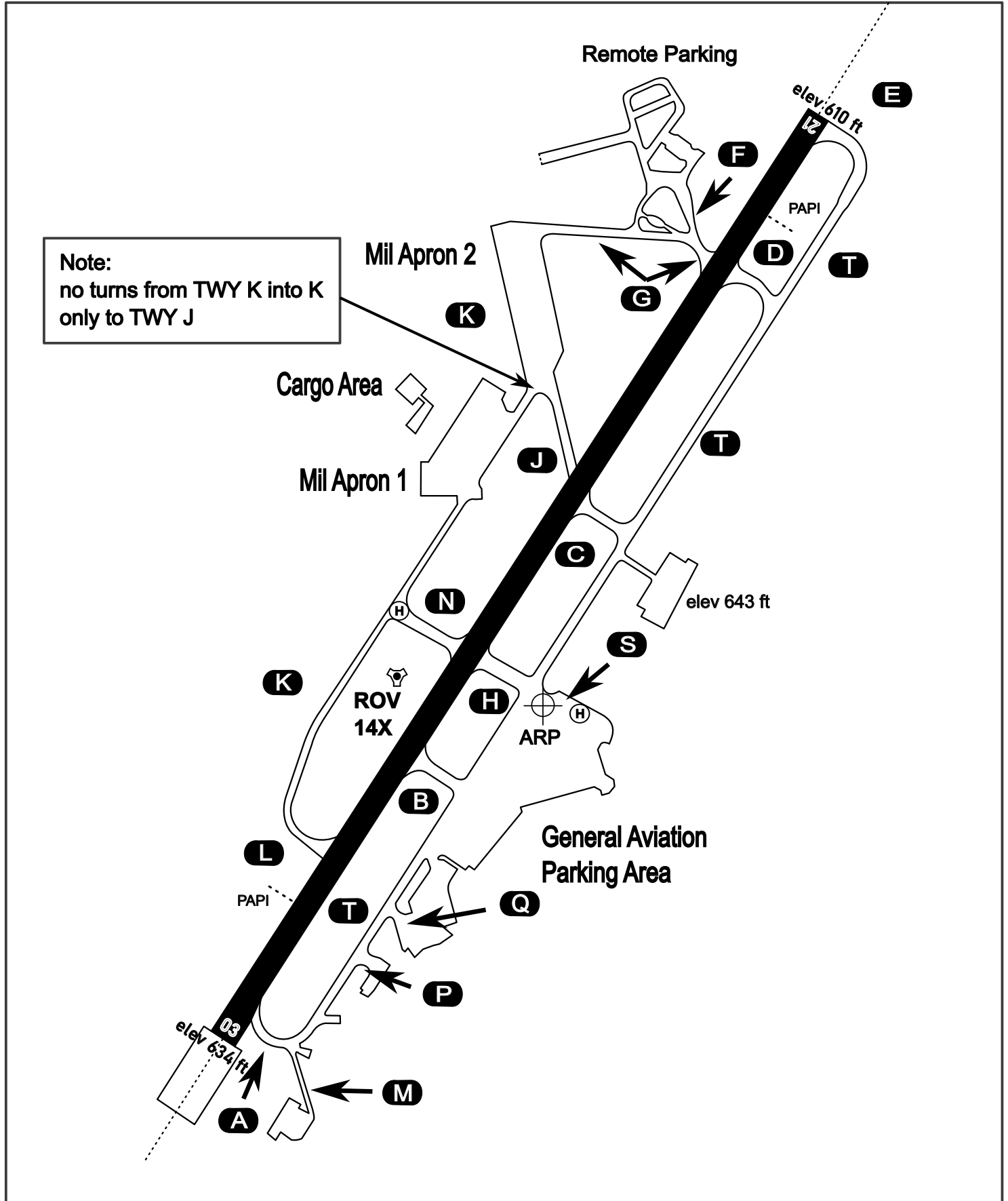
AERODROME CHART

Rovaniemi Aerodrome

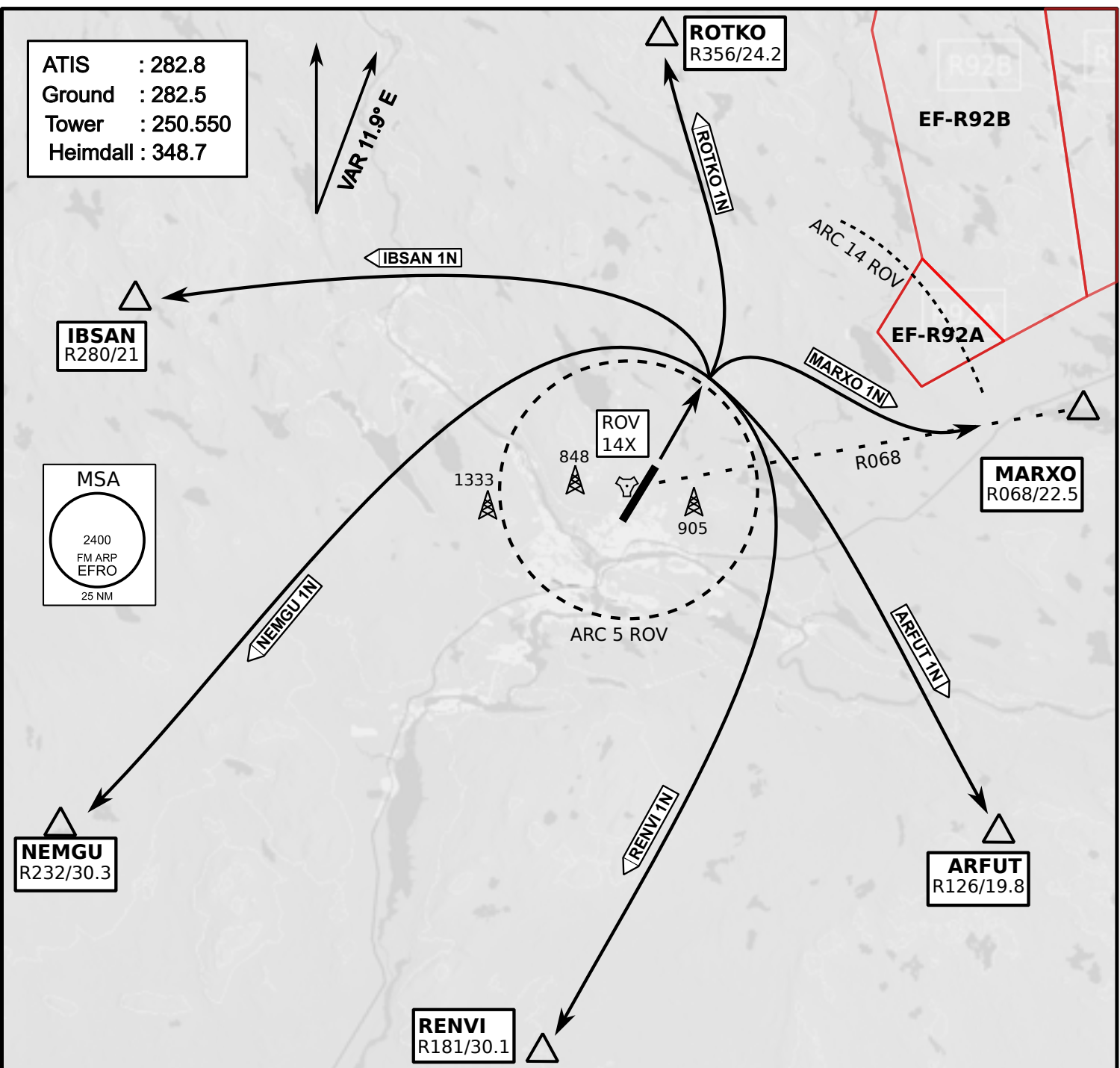
ARP N66° 33' 42" E025° 49' 51"

elev 643 ft

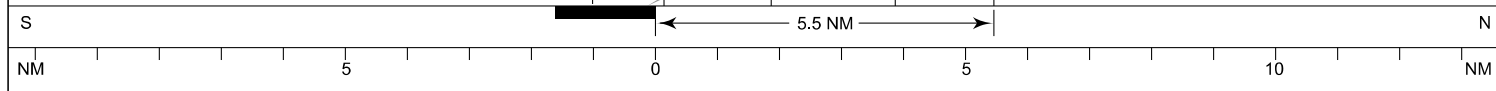
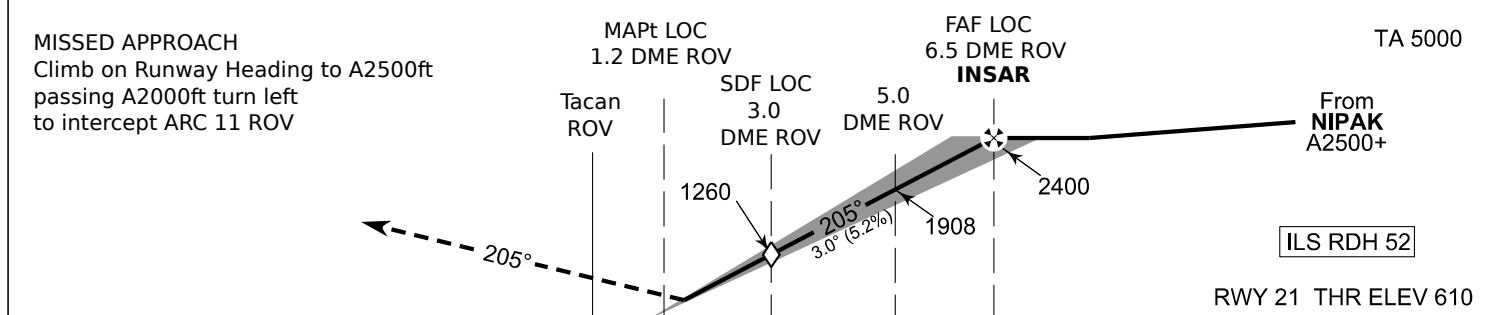
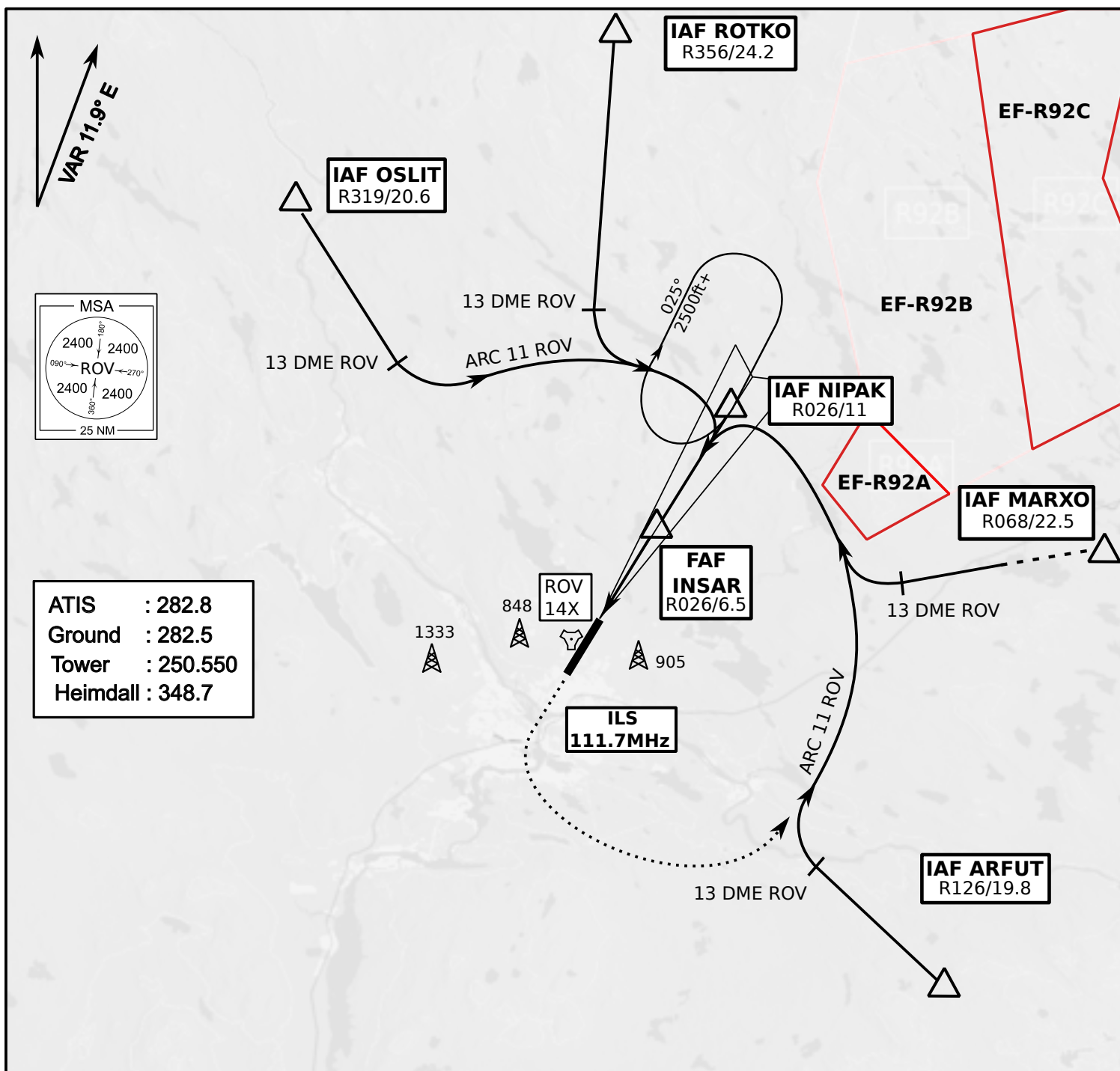
ROVANIEMI, FINLAND



ATIS	Ground	Tower	Radar
282.800	282.500	250.550	348.700



- Climb on Rwy heading to min A2000ft
- when passing A2000ft OR 5 DME ROV (whichever is later) turn to exit point
- Stay outside ARC 5 ROV
- if EF-R92B is active :
intercept R068 ROV inside 14 DME ROV to MARXO
- AB usage only if necessary for flight safety



OCA (H)	A	B	C	D
ILS CAT I	773 (164)	784 (175)	795 (186)	809 (200)
LOC	930 (320)			
LOC WO SDF	1260 (650)			
Circling	1120 (470)	1150 (510)	1300 (660)	1340 (690)

	kt	90	100	120	140	160
FAF - MAPt 5.4 NM	min:sec	3:36	3:14	2:42	2:19	2:01
Rate of descent	ft/min	480	530	640	740	850

Timing not authorized for defining the MAPt