

**MISSION DATA CARD**

OPORD		Callsign		Mission		Date/Time	
3600/2025		Rattler 3		Training		032000FEB25	
Task							Freq
AO							133.5
Departure				Recovery			
CAT				VFR Helicopter			
#	Callsign	Pilot		IFF	TCN	LSR	NET
-1	Rattler 3-1	Laud		4631	1Y	1251	
-2	Rattler 3-2	addiks/Hudson		4632	64Y	1252	
-3	Rattler 3-3	Remotex		4633	64X	1253	
-4	Rattler 3-4	Mütze		4634	1X	1254	

**LOADOUT**

A/A					GUN	
A/G					CHF	
POD					FLR	
TKS					FUEL	

**TOLD**

	Takeoff	Target	Joker	Bingo	Land
FUEL	2513				

**AIRBASES**

	Name	TCN	ATIS	GND	TWR	RWY	Elev	ILS
Dep	LHA-1 USS Tarawa				305.0			
Arr	Rovaniemi	14X	282.8	282.5	250.55	21	643	111.7

**FLIGHTPLAN**

#	Name	Navaid/Coords/DME	ALT	TOT
1	IMARI	N66 28.406 E025 31.291		

**COMMS**

Radio	Usage
1	133.50

## OTHER FLIGHTS

Callsign	Mission	Airframe	Freq	TCN	Grpld	Laser
Raptor 1	Training	4x F-16C	134.0	1/64		162X
AO	Norway / Sweden / Finland	Task	Ferry Flight			
Tiger 1	Training	4x F/A-18C	261.15	1/64	1	155X
AO	Norway / Sweden / Finland	Task	Ferry Flight			
Nazgul 6	Training	4x F-15E	262.45	1/64		156X
AO	Norway / Sweden / Finland	Task	Ferry Flight			
Panther 7	Training	4x F/A-18C	261.35	1/64	1	157X
AO	Norway / Sweden / Finland	Task	Ferry Flight			
Raptor 2	Training	4x F-16C	134.5	1/64		162X
AO	Norway / Sweden / Finland	Task	Ferry Flight			
Monster	Training	4x A-10C	132.15	1/64	21	161X
AO	STTR	Task	Ferry to Rovaniemi			
Edelweiss	Training	1x A-10C	264.05	1/64		170X
AO		Task				

## RADIO CHANNELS

#	Freq	Name
1		Flight/Squadron specific
2	282.8	Rovaniemi ATIS
3	282.5	Rovaniemi Ground
4	250.55	Rovaniemi Tower
5	320.7	Bodo ATIS
6	250.75	Bodo Tower
7	235.45	Kallax ATIS
8	250.3	Kallax Tower
9	265.0	Texaco-1   KC-135   Medium / Slow   71Y
10	319.8	Arco-1   KC-135   High / Fast   22Y
11	360.8	Shell-1   KC-135 MPRS   High / Fast   41Y
12	304.0	CVN-71 Rough Rider (RRR)   71X
13	303.0	LHA-1 Tarawa (TWA)   79X
14	247.8	S-3B Mauler-1 (MAU)  64Y
15	347.8	Loki (E-2D)
16	348.7	Heimdall (E-3A)
17	242.17	ESR02 - CAS Range Operator
18	34.7	ESR02 - JTAC Odin
19	270.5	Blue
20	270.75	Red

**RAMROD**

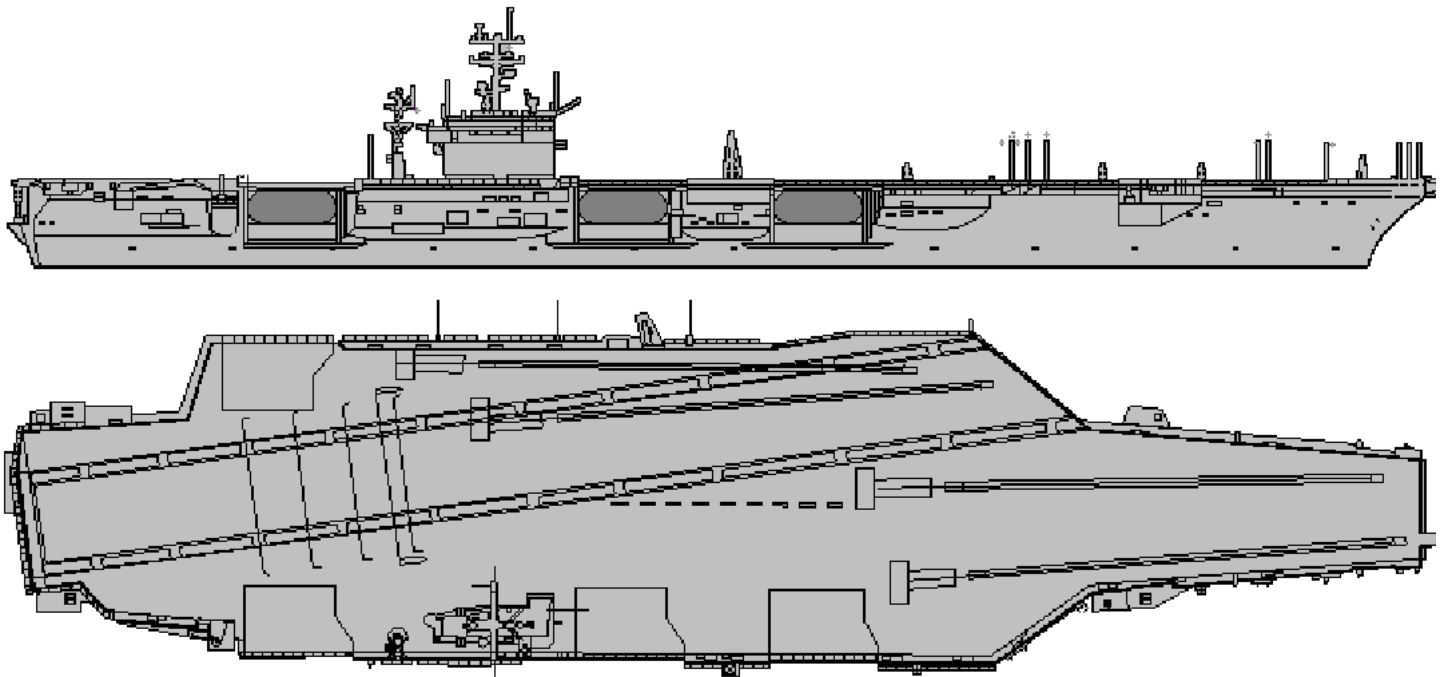
0	1	2	3	4	5	6	7	8	9
B	L	U	S	T	E	R	I	N	G

**KTC 1400 C**

	0	1	2	3	4	5	6	7	8	9
A	GRFS	IEP	WJT	ON	MH	LXQ	YU	VK	AB	DC
B	XLGO	WQY	CJN	MV	KA	FRI	PS	BH	TD	UE
C	QRPF	UHC	BIX	LO	AK	WND	TG	YE	JM	VS
D	INRX	POF	AYC	EB	QL	DWG	MJ	TH	KU	VS
E	JXMF	KUN	VID	BG	CS	YQE	RO	PT	WA	HL
F	ENRW	OLB	MGF	YV	QD	CHK	IP	JX	SA	TU
G	DQPX	UCT	NRK	FV	YA	HJW	IS	GE	ML	BO
H	WTJV	DLN	XOQ	CU	KS	HBR	GF	MI	YA	EP
I	MYJK	DNB	RIP	HX	GO	TEL	QA	FS	VC	UW
J	IAQF	KCO	GYN	PU	LV	RJX	WE	TB	MS	DH
K	RWAE	VPK	CHJ	TG	XY	LOM	SD	UQ	NB	IF
L	JUKL	OMN	PXF	GH	YB	EAR	ID	WV	QS	TC
M	XQAR	BTV	OLC	WU	YE	NJK	PI	FH	MG	SD
N	RGWK	OYU	MPL	TC	QF	SIB	JA	NE	VH	DX
O	YKSI	BXM	ATG	HD	QP	WJE	LR	OU	CF	NV
P	TDXJ	YAQ	BCH	OF	WN	GRE	SK	UI	LM	VP
Q	AILD	GTO	SNV	UP	KC	HXF	MB	WJ	YR	QE
R	IEUP	QOF	LMW	VA	XJ	HKG	RC	DS	NY	TB
S	RDFG	NPL	BYC	UK	AE	JVQ	MO	SX	TW	HI
T	QNJO	WVU	SDB	RT	YG	IXK	CE	PA	HL	MF
U	XFHI	CNA	PJL	QK	UO	TEM	GD	BR	SY	WV
V	BAKF	LVX	OEI	JC	TU	YNH	PD	QG	MS	RW
W	SMRC	NOK	JBF	WY	PI	TGH	VE	AX	UL	QD
X	PWNR	MUQ	HJK	CS	AB	IGO	FL	DT	YV	XE
Y	XJWN	LBP	KDO	MF	CA	RIH	YT	VS	GU	EQ

**NAVAIDS**

Id	Name	Channel	Position	Elevation
BOO	Bodo	45	N67 15.838 E014 20.046	43
BNK	Banak	47	N70 03.937 E024 58.181	17
OYA	Andoya	28	N69 17.175 E016 08.658	19



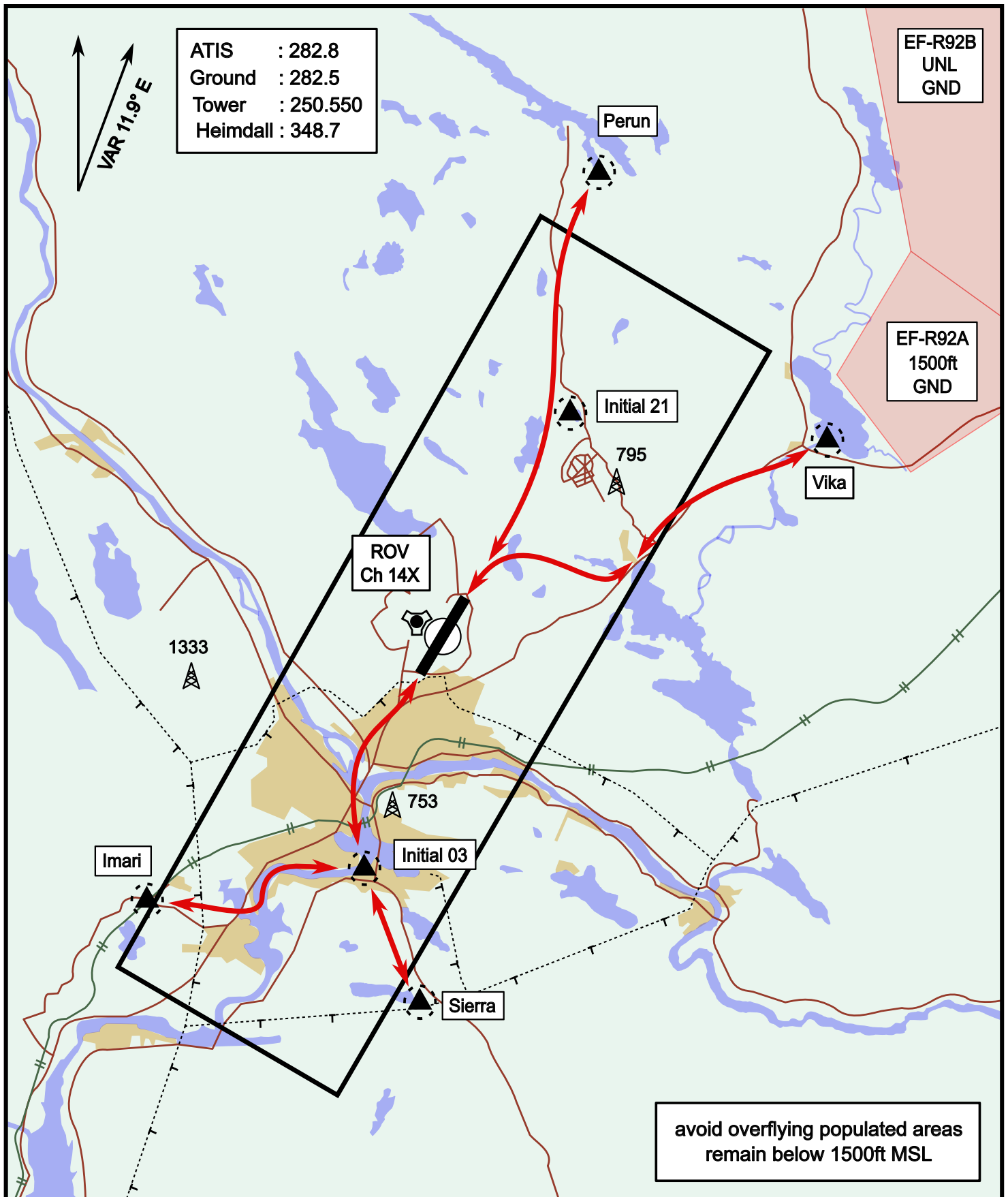




# Helicopter Routing

elev 643 ft

# Rovaniemi, Finland



Vika	N66° 37.474 / E026° 13.557	Sierra	N66° 25.711 / E025° 46.610
Perun	N66° 44.135 / E026° 01.630	Imari	N66° 28.406 / E025° 31.291
Initial21	N66° 38.421 / E025° 58.682	Initial03	N66° 28.793 / E025° 44.105

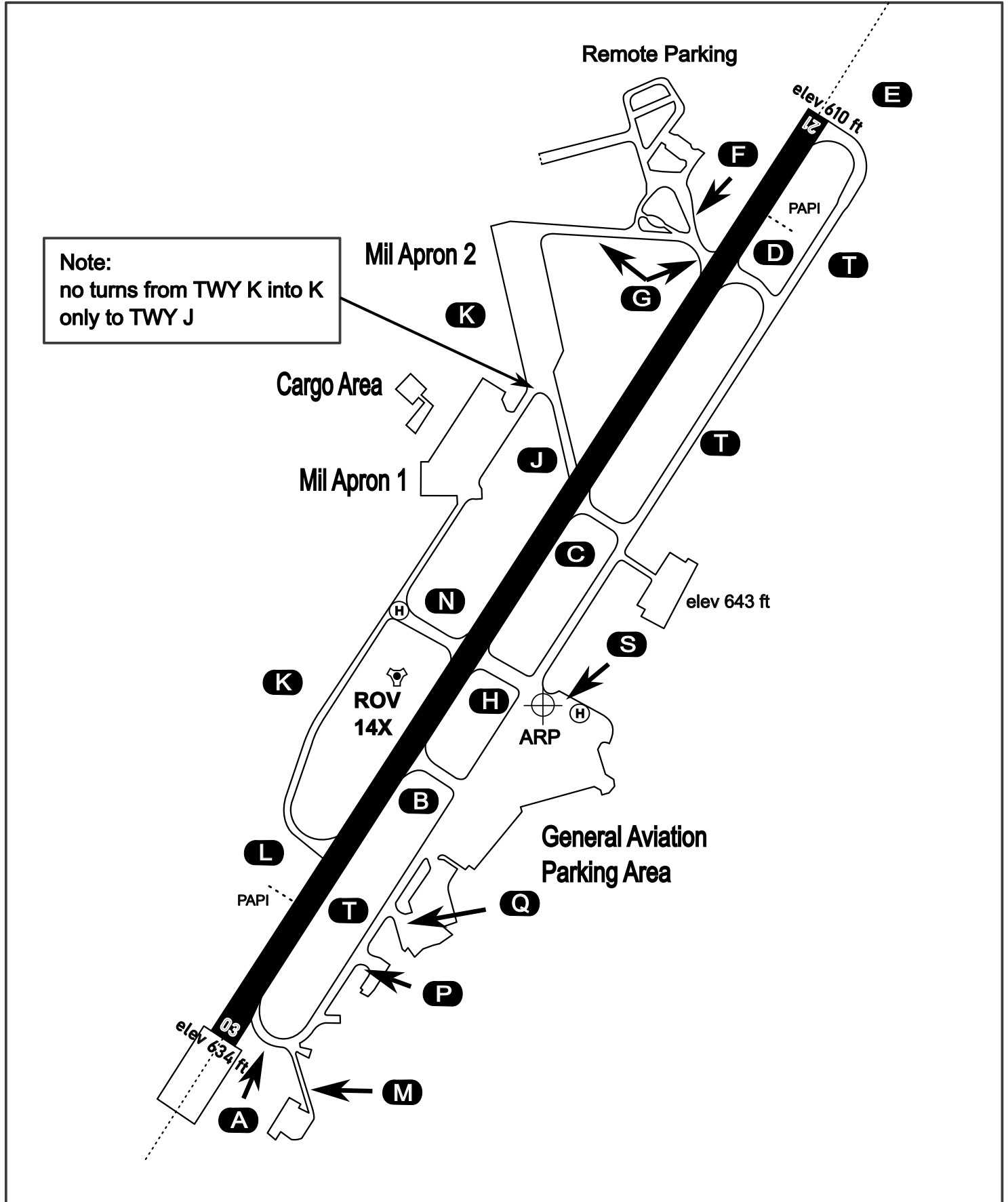
# AERODROME CHART

Rovaniemi Aerodrome

ARP N66° 33' 42" E025° 49' 51"

elev 643 ft

## ROVANIEMI, FINLAND



ATIS	Ground	Tower	Radar
282.800	282.500	250.550	348.700