

MISSION DATA CARD

OPORD		Callsign		Mission		Date/Time		
3599/2025		Panther 7		Training		032130FEB25		
Task	Ferry Flight					Freq		
AO	Norway / Sweden / Finland					261.35		
Departure				Recovery				
				VFR Approach				
#	Callsign		Pilot		IFF	TCN	LSR	NET
-1	Panther 7-1		Prinz		1261	1Y	1571	01/01
-2	Panther 7-2		Ghost		1262	64Y	1572	01/02
-3	Panther 7-3		Hawk		1263	64X	1573	01/03
-4	Panther 7-4		Jemi		1264	1X	1574	01/04

LOADOUT

A/A	2xA9X				GUN	100% HEI-T	
A/G					CHF	120	
POD					FLR	0	
TKS	3xFPU-8A				FUEL	100%	

TOLD

	Takeoff	Target	Joker	Bingo	Land		
FUEL	17535			4000			

AIRBASES

	Name	TCN	ATIS	GND	TWR	RWY	Elev	ILS
Arr	Rovaniemi	14X	282.8	282.5	250.55	21	643	111.7
Div	Kallax		235.45		250.3	32	66	109.9

FLIGHTPLAN

#	Name	Navaid/Coords/DME	ALT	TOT
1	Bodo	N67 16.619 E014 18.591	24000	
2	LIVLI	N67 16 E016 47.420	24000	
3	SEPJA	N67 27.300 E021 12.080	24000	
4	NAFFI	N67 04.630 E023 11.660	24000	
5	IMARI	N66 28.406 E025 31.291	5000	
6	Rovaniemi	N66 33.890 E025 49.821	582	

COMMS

Radio	Usage
1	348.7 (16), 250.55 (4), 282.5 (3)
2	Inhouse 261.35
3	MIDS A:23 / B:44

NOTES

- Take off Nellis via DREAM FOUR Departure
- After passing DREAM check-in on BLACKJACK and turn East (090)

- Enter cockpit above Norwegian Sea northwest of Bodo.
- Follow predefined Waypoints
- Rendezvous with Tankers along route
- Tankers available between WP1 to WP3
- Continue with Flight Plan towards Rovaniemi
- Contact Rovaniemi Tower and Land.

Fliegende Rentiere sind nach Möglichkeit zu dokumentieren.

Shell2: Tacan: 42Y Radio: 360.90 24000 feet 330 kn

SUPPORT**Tanker**

Callsign	TCN	Freq	ALT	TAS
SHELL 1	41Y	360.8		

Pos

AWACS

Callsign	Freq	ALT	Pos
HEIMDALL	348.7		
LOKI	347.8		

OTHER FLIGHTS

Callsign	Mission	Airframe	Freq	TCN	Grpld	Laser
Raptor 1	Training	4x F-16C	134.0	1/64		162X
AO	Norway / Sweden / Finland	Task	Ferry Flight			
Tiger 1	Training	4x F/A-18C	261.15	1/64	1	155X
AO	Norway / Sweden / Finland	Task	Ferry Flight			
Nazgul 6	Training	4x F-15E	262.45	1/64		156X
AO	Norway / Sweden / Finland	Task	Ferry Flight			
Rattler 3	Training	4x AH-64D	133.5	1/64		125X
AO		Task				
Raptor 2	Training	4x F-16C	134.5	1/64		162X
AO	Norway / Sweden / Finland	Task	Ferry Flight			
Monster	Training	4x A-10C	132.15	1/64	21	161X
AO	STTR	Task	Ferry to Rovaniemi			
Edelweiss	Training	1x A-10C	264.05	1/64		170X
AO		Task				

RADIO CHANNELS

#	Freq	Name
1		Flight/Squadron specific
2	282.8	Rovaniemi ATIS
3	282.5	Rovaniemi Ground
4	250.55	Rovaniemi Tower
5	320.7	Bodo ATIS
6	250.75	Bodo Tower
7	235.45	Kallax ATIS
8	250.3	Kallax Tower
9	265.0	Texaco-1 KC-135 Medium / Slow 71Y
10	319.8	Arco-1 KC-135 High / Fast 22Y
11	360.8	Shell-1 KC-135 MPRS High / Fast 41Y
12	304.0	CVN-71 Rough Rider (RRR) 71X
13	303.0	LHA-1 Tarawa (TWA) 79X
14	247.8	S-3B Mauler-1 (MAU) 64Y
15	347.8	Loki (E-2D)
16	348.7	Heimdall (E-3A)
17	242.17	ESR02 - CAS Range Operator
18	34.7	ESR02 - JTAC Odin
19	270.5	Blue
20	270.75	Red

RAMROD

0	1	2	3	4	5	6	7	8	9
B	L	U	S	T	E	R	I	N	G

KTC 1400 C

	0	1	2	3	4	5	6	7	8	9
A	GRFS	IEP	WJT	ON	MH	LXQ	YU	VK	AB	DC
B	XLGO	WQY	CJN	MV	KA	FRI	PS	BH	TD	UE
C	QRPF	UHC	BIX	LO	AK	WND	TG	YE	JM	VS
D	INRX	POF	AYC	EB	QL	DWG	MJ	TH	KU	VS
E	JXMF	KUN	VID	BG	CS	YQE	RO	PT	WA	HL
F	ENRW	OLB	MGF	YV	QD	CHK	IP	JX	SA	TU
G	DQPX	UCT	NRK	FV	YA	HJW	IS	GE	ML	BO
H	WTJV	DLN	XOQ	CU	KS	HBR	GF	MI	YA	EP
I	MYJK	DNB	RIP	HX	GO	TEL	QA	FS	VC	UW
J	IAQF	KCO	GYN	PU	LV	RJX	WE	TB	MS	DH
K	RWAE	VPK	CHJ	TG	XY	LOM	SD	UQ	NB	IF
L	JUKL	OMN	PFX	GH	YB	EAR	ID	WV	QS	TC
M	XQAR	BTV	OLC	WU	YE	NJK	PI	FH	MG	SD
N	RGWK	OYU	MPL	TC	QF	SIB	JA	NE	VH	DX
O	YKSI	BXM	ATG	HD	QP	WJE	LR	OU	CF	NV
P	TDXJ	YAQ	BCH	OF	WN	GRE	SK	UI	LM	VP
Q	AILD	GTO	SNV	UP	KC	HXF	MB	WJ	YR	QE
R	IEUP	QOF	LMW	VA	XJ	HKG	RC	DS	NY	TB
S	RDFG	NPL	BYC	UK	AE	JVQ	MO	SX	TW	HI
T	QNJO	WVU	SDB	RT	YG	IXK	CE	PA	HL	MF
U	XFHI	CNA	PJL	QK	UO	TEM	GD	BR	SY	WV
V	BAKF	LVX	OEI	JC	TU	YNH	PD	QG	MS	RW
W	SMRC	NOK	JBF	WY	PI	TGH	VE	AX	UL	QD
X	PWNR	MUQ	HJK	CS	AB	IGO	FL	DT	YV	XE
Y	XJWN	LBP	KDO	MF	CA	RIH	YT	VS	GU	EQ

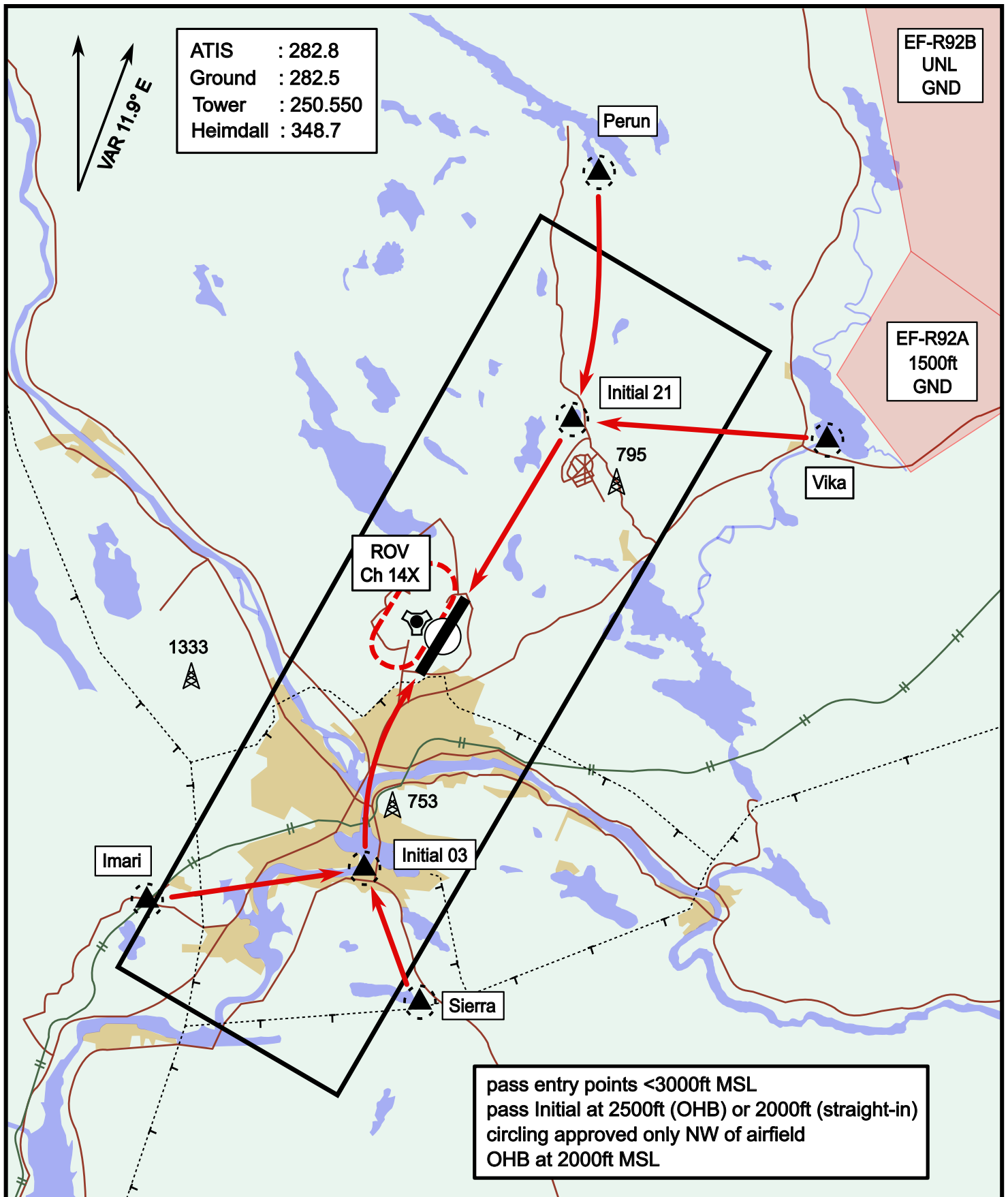
NAVAIDS

Id	Name	Channel	Position	Elevation
BOO	Bodo	45	N67 15.838 E014 20.046	43
BNK	Banak	47	N70 03.937 E024 58.181	17
OYA	Andoya	28	N69 17.175 E016 08.658	19

Visual Approach Jet

elev 643 ft

Rovaniemi, Finland



Vika	N66° 37.474 / E026° 13.557	Sierra	N66° 25.711 / E025° 46.610
Perun	N66° 44.135 / E026° 01.630	Imari	N66° 28.406 / E025° 31.291
Initial21	N66° 38.421 / E025° 58.682	Initial03	N66° 28.793 / E025° 44.105

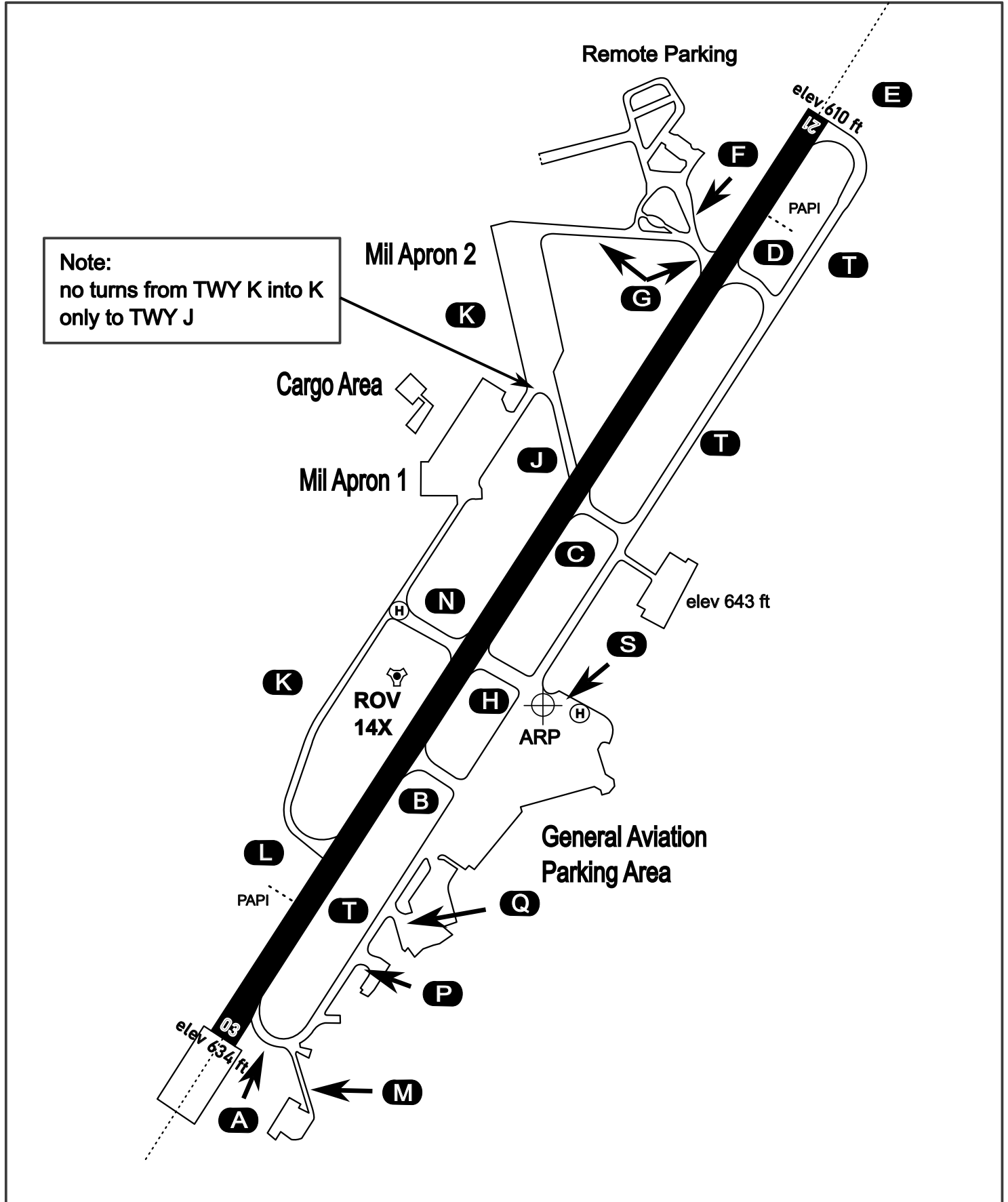
AERODROME CHART

Rovaniemi Aerodrome

ARP N66° 33' 42" E025° 49' 51"

elev 643 ft

ROVANIEMI, FINLAND



ATIS	Ground	Tower	Radar
282.800	282.500	250.550	348.700

NOT AVAILABLE

NOT AVAILABLE