

**MISSION DATA CARD**

OPORD		Callsign		Mission		Date/Time		
3591/2025		Raptor 1		Training		012000FEB25		
Task						Freq		
AO						134.0		
Departure				Recovery				
VFR Departure				VFR Approach				
#	Callsign		Pilot		IFF	TCN	LSR	NET
-1	Raptor 1-1		Snowbird		1611	1Y	1621	

**LOADOUT**

A/A	C9M				GUN	100% HEI-T	
A/G					CHF	60	
POD	AT50				FLR	60	
TKS	2xFT300				FUEL	100%	

**TOLD**

	Takeoff	Target	Joker	Bingo	Land
FUEL	11169				

**AIRBASES**

	Name	TCN	ATIS	GND	TWR	RWY	Elev	ILS
Dep	Rovaniemi	14X	282.8	282.5	250.55	21	643	111.7
Arr	Rovaniemi	14X	282.8	282.5	250.55	21	643	111.7
Div	Bodo	45X	320.7		250.75	25	19	110.3

**FLIGHTPLAN**

#	Name	Navaid/Coords/DME	ALT	TOT
1	ROTKO	N66 57.633 E025 57.667	5000	
2	Bodo IAF	N67 18.327 E014 43.204	3000	
3	Bodo	N67 16.123 E014 21.575	0	
4	OSLIT	N66 51.750 E025 24.383	5000	
5	NIPAK	N66 42.350 E026 06.083	3000	
6	RVNInit21	N66 38.642 E025 58.682	2400	
7	EFRO	N66 33.898 E025 49.842	610	

**SUPPORT****Tanker**

Callsign	TCN	Freq	ALT	TAS
TEXACO 1	71Y	265.0		
	Pos			
ARCO 1	22Y	319.8		
	Pos			

## RADIO CHANNELS

#	Freq	Name
1		Flight/Squadron specific
2	282.8	Rovaniemi ATIS
3	282.5	Rovaniemi Ground
4	250.55	Rovaniemi Tower
5	320.7	Bodo ATIS
6	250.75	Bodo Tower
7	235.45	Kallax ATIS
8	250.3	Kallax Tower
9	265.0	Texaco-1   KC-135   Medium / Slow   71Y
10	319.8	Arco-1   KC-135   High / Fast   22Y
11	360.8	Shell-1   KC-135 MPRS   High / Fast   41Y
12	304.0	CVN-71 Rough Rider (RRR)   71X
13	303.0	LHA-1 Tarawa (TWA)   79X
14	247.8	S-3B Mauler-1 (MAU)  64Y
15	347.8	Loki (E-2D)
16	348.7	Heimdall (E-3A)
17	242.17	ESR02 - CAS Range Operator
18	34.7	ESR02 - JTAC Odin
19	270.5	Blue
20	270.75	Red

RAMROD										
0	1	2	3	4	5	6	7	8	9	
W	I	N	D	B	R	E	A	K	S	
KTC 1400 C										
	0	1	2	3	4	5	6	7	8	9
A	GVWR	FES	UAH	YD	IK	JOT	QX	NP	BC	LM
B	QNKU	CGS	JEF	VP	XM	WAD	TH	LR	YB	OI
C	SEGT	XBQ	NJD	WK	YL	HPI	AO	FU	CR	MV
D	FSML	RAI	GDB	VK	QJ	PNX	HC	EU	WY	TO
E	NHOB	LXR	PKA	YC	QS	TWG	EF	IU	JM	DV
F	VOHJ	ALD	XIN	TM	FS	KBQ	RY	EC	UG	PW
G	OCTK	GMU	PWJ	XR	SQ	VFY	LH	AN	EI	BD
H	NPRY	TSK	DWB	GX	QH	VJA	ME	CU	IL	FO
I	NRGT	ODC	MWK	VY	JQ	HXE	PB	UI	LS	FA
J	LCSF	ABT	WJY	DQ	XR	OGH	PV	KE	NI	MU
K	HWYQ	NGI	FAC	KP	RD	VTO	EL	XM	JU	BS
L	OBKN	QLU	WFT	GS	CA	MPY	RD	JI	EX	HV
M	RHKD	NME	FSV	CY	TQ	XGL	UW	IO	AB	PJ
N	QROK	PEI	BNW	YX	GT	JLU	DM	CH	SV	AF
O	WKPS	FOM	YIB	HR	GX	JTA	VN	CQ	UD	LE
P	WJKS	TXC	IYO	FV	DA	ENB	HP	RG	MQ	UL
Q	VBAG	QUN	DXK	OY	FW	PSJ	CI	HR	LM	TE
R	WQPF	AOJ	TVX	EH	IS	LGR	NC	YB	KM	DU
S	SNXR	HML	FYB	QA	VG	OIE	CP	UT	KD	WJ
T	QIFB	XLD	KEA	VN	OR	GTU	JP	WH	CM	SY
U	EUFH	OLY	VDG	IW	CQ	KMR	TA	BN	JP	SX
V	PSJQ	BXT	YID	EA	HG	NCO	LM	KR	UF	WV
W	WQUB	GCN	MAD	LI	OK	TYV	FS	PX	ER	JH
X	MADP	NTK	ULY	HO	VQ	EIJ	CR	WF	XG	BS
Y	JTLU	SAN	VOF	BD	YI	KPW	QC	MR	EX	HG

**NAVAIDS**

Id	Name	Channel	Position	Elevation
BOO	Bodo	45	N67 15.838 E014 20.046	43
BNK	Banak	47	N70 03.937 E024 58.181	17
OYA	Andoya	28	N69 17.175 E016 08.658	19

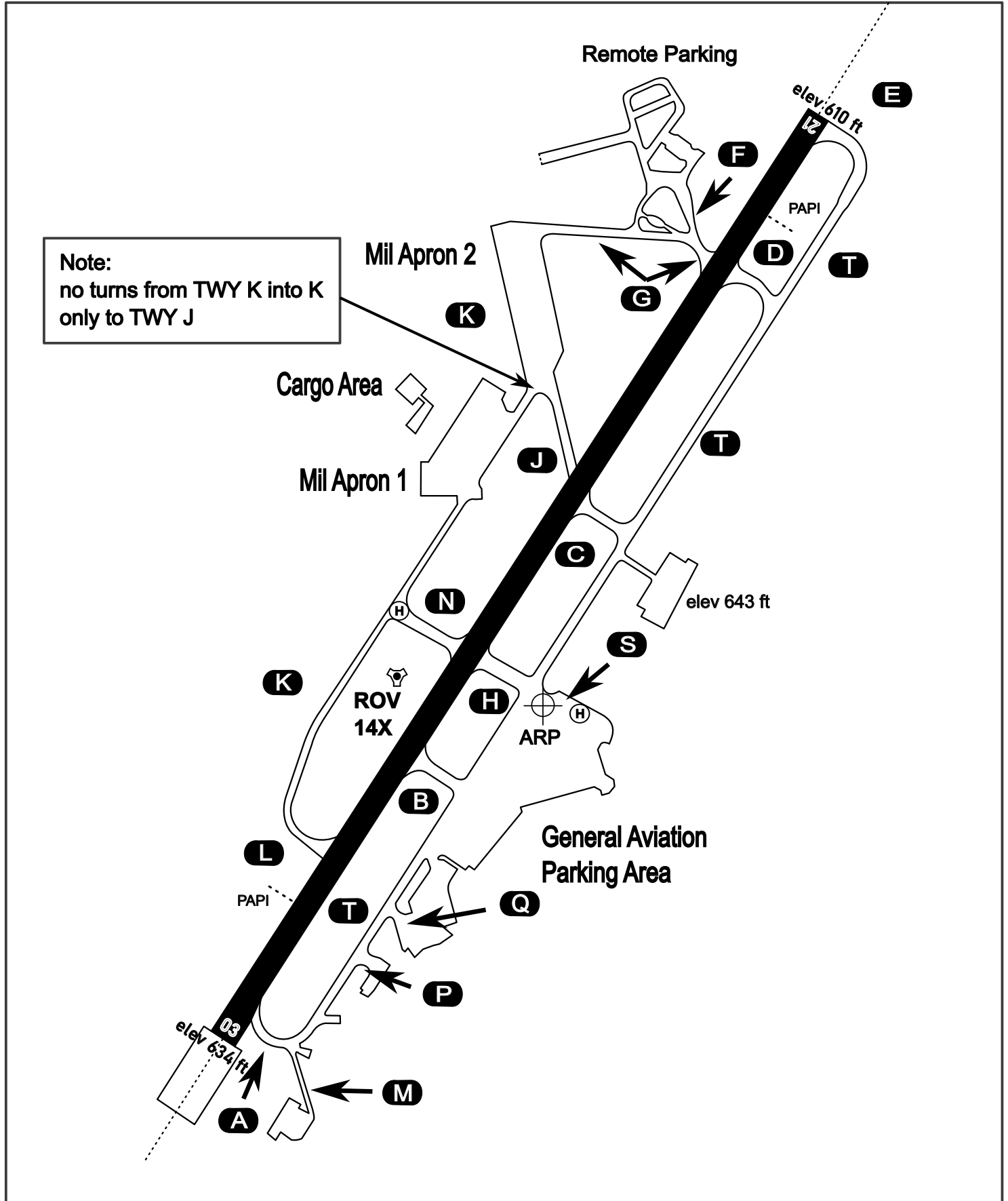
# AERODROME CHART

Rovaniemi Aerodrome

ARP N66° 33' 42" E025° 49' 51"

elev 643 ft

## ROVANIEMI, FINLAND

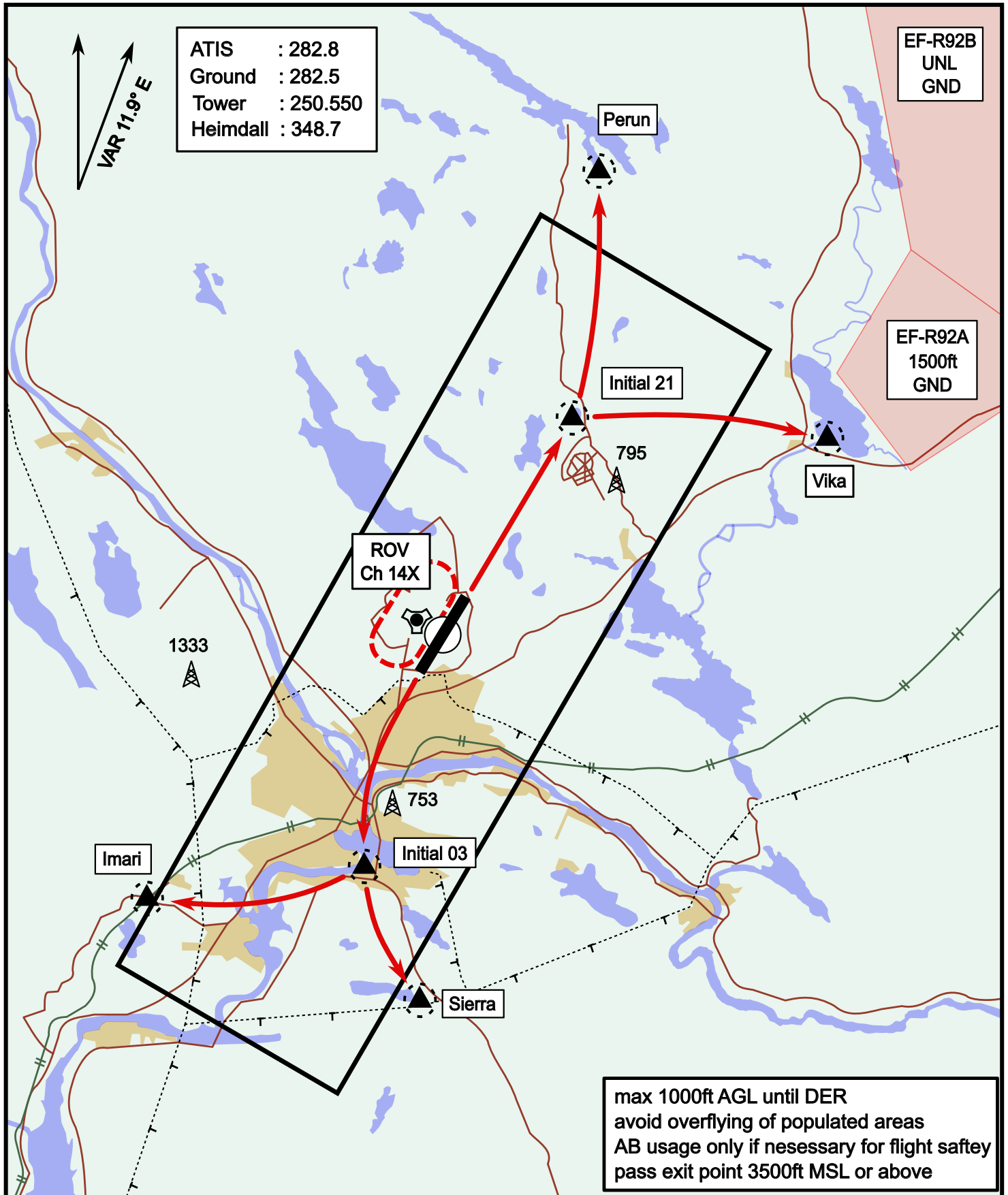


ATIS	Ground	Tower	Radar
282.800	282.500	250.550	348.700

# Visual Departure Jet

elev 643 ft

# Rovaniemi, Finland



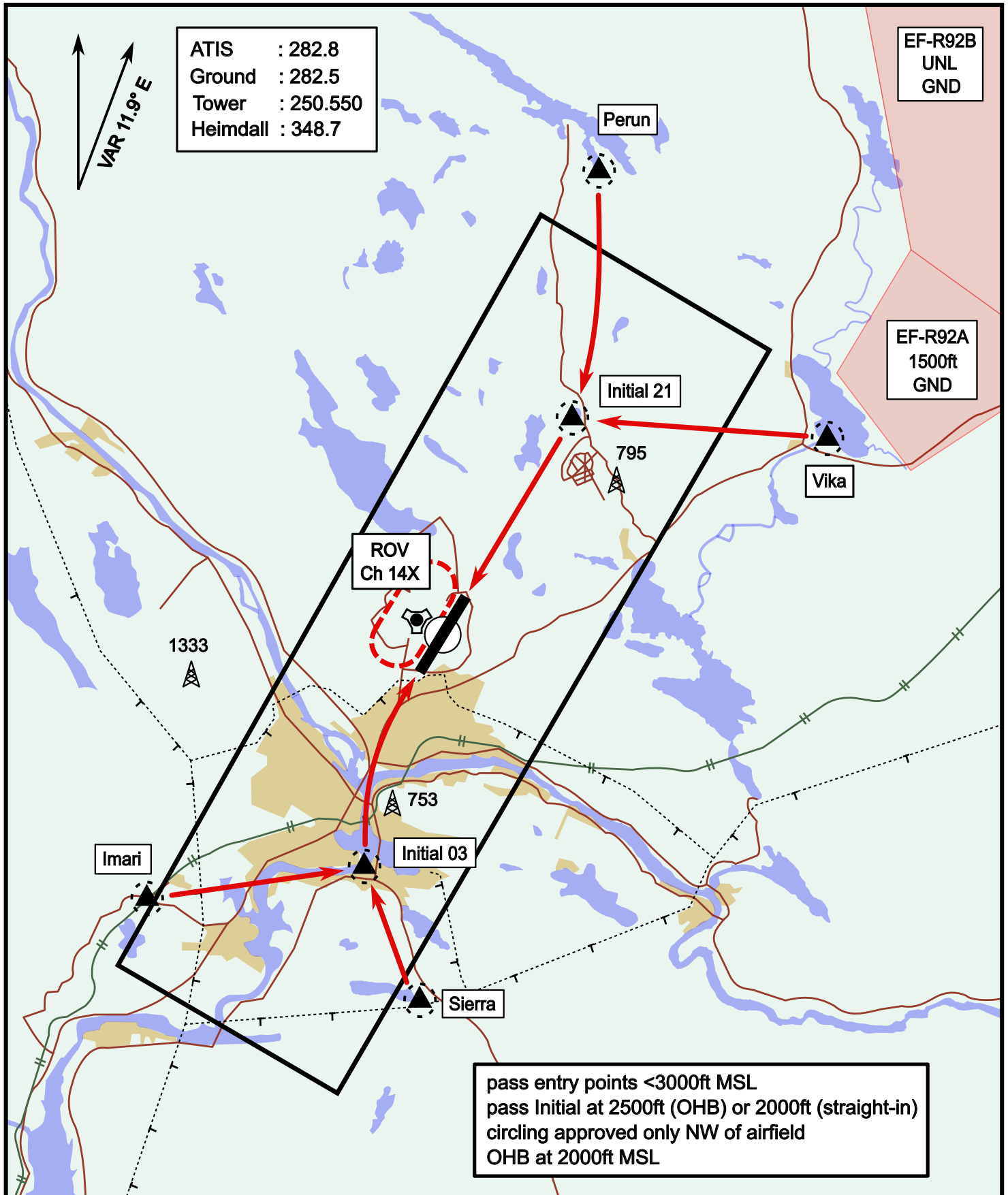
Vika	N66° 37.474 / E026° 13.557	Sierra	N66° 25.711 / E025° 46.610
Perun	N66° 44.135 / E026° 01.630	Imari	N66° 28.406 / E025° 31.291
Initial21	N66° 38.421 / E025° 58.682	Initial03	N66° 28.793 / E025° 44.105



# Visual Approach Jet

elev 643 ft

# Rovaniemi, Finland

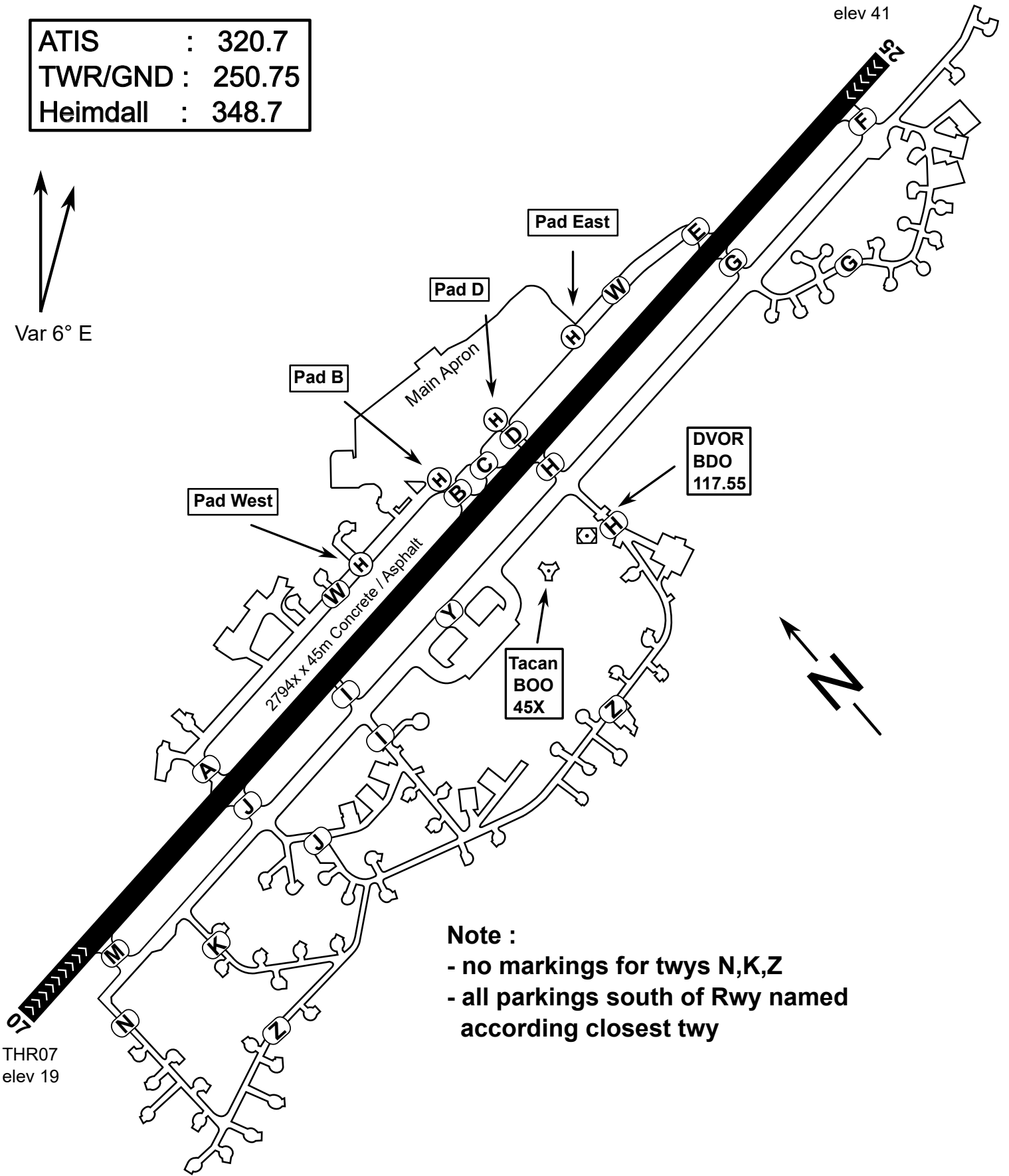
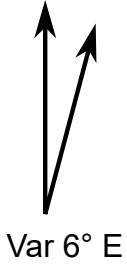


Vika	N66° 37.474 / E026° 13.557	Sierra	N66° 25.711 / E025° 46.610
Perun	N66° 44.135 / E026° 01.630	Imari	N66° 28.406 / E025° 31.291
Initial21	N66° 38.421 / E025° 58.682	Initial03	N66° 28.793 / E025° 44.105

**NOT AVAILABLE**

ATIS	: 320.7
TWR/GND	: 250.75
Heimdall	: 348.7

THR25  
elev 41



**Note :**

- no markings for twys N,K,Z
- all parkings south of Rwy named according closest twy