

MISSION DATA CARD

OPORD	Callsign	Mission	Date/Time			
3590/2025	Edelweiss	Training	312148JAN25			
Task						Freq
AO						264.05
Departure			Recovery			
SID RWY 03			ILS RWY 21			
#	Callsign	Pilot	IFF	TCN	LSR	NET
-1	Edelweiss-1	Snowbird	1701	1Y	1701	

LOADOUT

A/A					GUN	
A/G					CHF	
POD					FLR	
TKS					FUEL	

TOLD

	Takeoff	Target	Joker	Bingo	Land
FUEL	7163				

AIRBASES

	Name	TCN	ATIS	GND	TWR	RWY	Elev	ILS
Dep	Rovaniemi	14X	282.8	282.5	250.55	21	643	111.7
Arr	Rovaniemi	14X	282.8	282.5	250.55	21	643	111.7

RADIO CHANNELS

#	Freq	Name
1		Flight/Squadron specific
2	282.8	Rovaniemi ATIS
3	282.5	Rovaniemi Ground
4	250.55	Rovaniemi Tower
5	320.7	Bodo ATIS
6	250.75	Bodo Tower
7	235.45	Kallax ATIS
8	250.3	Kallax Tower
9	265.0	Texaco-1 KC-135 Medium / Slow 71Y
10	319.8	Arco-1 KC-135 High / Fast 22Y
11	360.8	Shell-1 KC-135 MPRS High / Fast 41Y
12	304.0	CVN-71 Rough Rider (RRR) 71X
13	303.0	LHA-1 Tarawa (TWA) 79X
14	247.8	S-3B Mauler-1 (MAU) 64Y
15	347.8	Loki (E-2D)
16	348.7	Heimdall (E-3A)
17	242.17	ESR02 - CAS Range Operator
18	34.7	ESR02 - JTAC Odin
19	270.5	Blue
20	270.75	Red

RAMROD

0	1	2	3	4	5	6	7	8	9
T	R	A	V	E	L	I	N	G	S

KTC 1400 C

	0	1	2	3	4	5	6	7	8	9
A	WADF	LKY	XNS	MP	EG	JIR	BV	CH	UQ	OT
B	XDIU	TSK	HGN	PL	JC	BWA	VF	QR	EY	MO
C	XJCH	KYF	PTS	NQ	UR	WLI	DO	GV	AM	EB
D	WOUT	SQV	LDM	PC	RK	NFX	YA	BI	GJ	EH
E	CGXY	LSD	OAU	HQ	WJ	MPN	VB	TE	FR	KI
F	YTBV	LJF	QGA	PR	OM	EKH	NS	UX	WD	IC
G	NXPB	VHO	LJI	SY	BG	EKU	FC	QW	MR	AT
H	PGDK	WEC	MHN	VY	TS	JBI	FL	AO	QU	RX
I	CLRO	SUN	KTH	GX	AF	WBJ	IM	YP	QV	DE
J	VRKC	OEA	BJQ	GN	WM	YXP	FD	LH	UT	IS
K	XKGR	JAU	MYS	LC	NQ	VOH	BW	DT	EF	PI
L	YVUL	TEJ	RFB	IS	HX	KDG	MN	WO	PC	AQ
M	SMKO	UAP	YVD	LC	BF	XJI	QH	TE	WN	GR
N	JIXD	RSC	VEG	KF	HT	WUY	QM	AN	BO	PL
O	KTEV	IQB	RNF	UY	HM	ASG	CJ	OP	WD	XL
P	MQPL	TNW	DVY	UO	HB	FRE	CJ	SX	GI	KA
Q	FAEC	JGB	LPR	NO	XT	WID	SK	MH	QY	UV
R	FKUN	IMJ	LPV	AE	QO	GYT	CR	WS	HX	DB
S	MRGQ	HOW	SDV	YL	TI	KXB	EU	CN	FA	PJ
T	IEMP	RCW	VAX	HF	OK	BNJ	SG	DT	QY	UL
U	VBRP	NJC	IWM	OL	QE	TKG	UD	XF	HS	YA
V	TJBR	OKN	MSL	FI	DQ	VEY	XA	CP	UH	GW
W	GPMO	ADC	UIW	VY	FN	JQS	RH	ET	KB	XL
X	HQGJ	IYO	PWB	CK	RA	DFN	LU	ST	EV	MX
Y	IMER	UOD	HTB	NK	SW	CPG	JA	YQ	XF	VL

NAVAIDS

Id	Name	Channel	Position	Elevation
BOO	Bodo	45	N67 15.838 E014 20.046	43
BNK	Banak	47	N70 03.937 E024 58.181	17
OYA	Andoya	28	N69 17.175 E016 08.658	19

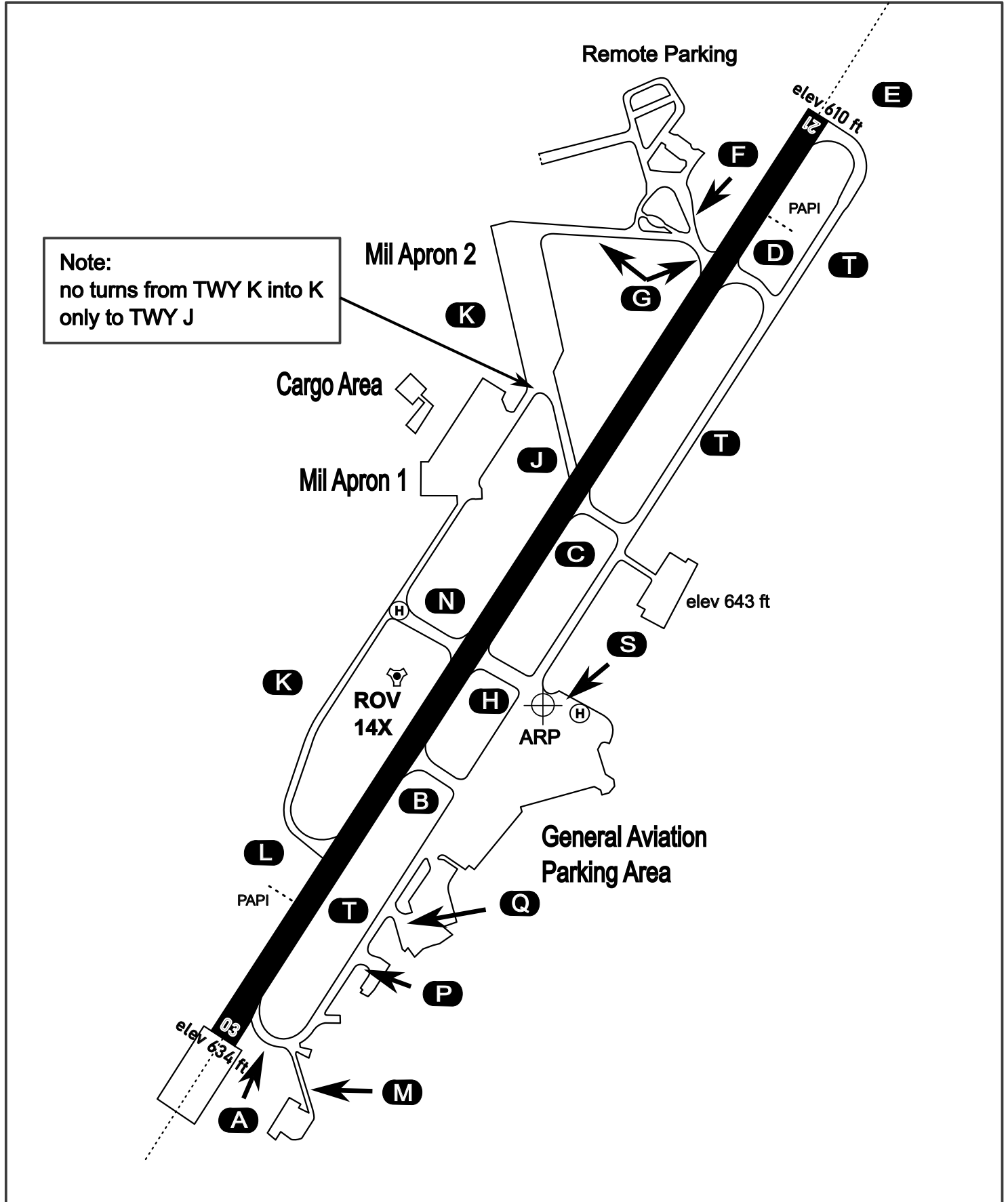
AERODROME CHART

Rovaniemi Aerodrome

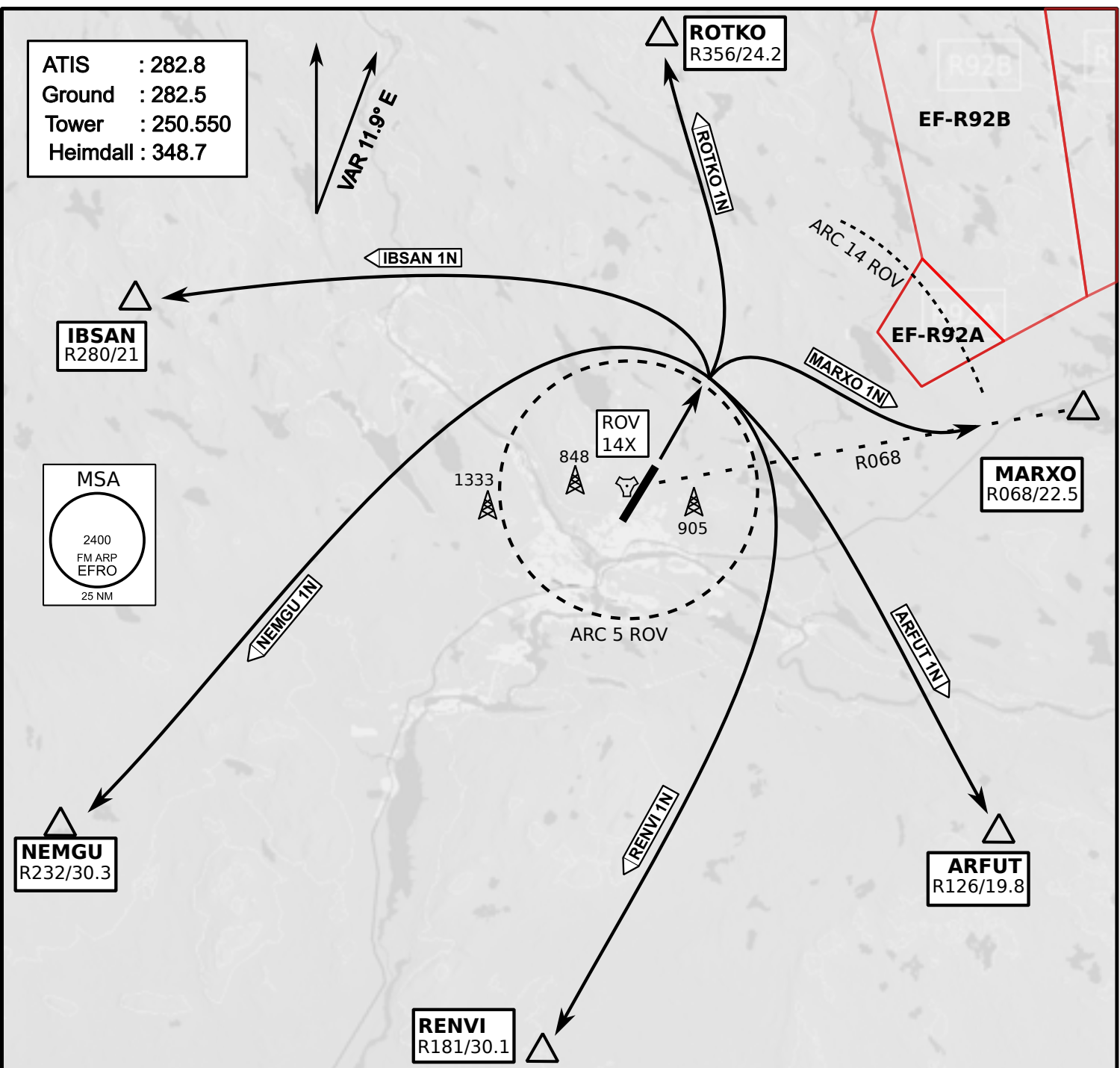
ARP N66° 33' 42" E025° 49' 51"

elev 643 ft

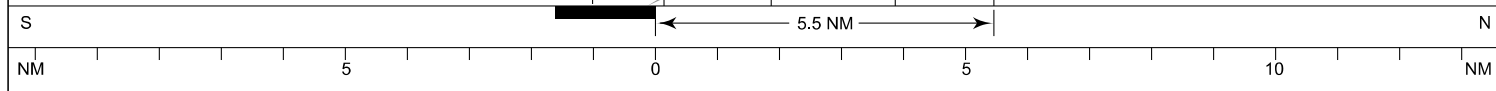
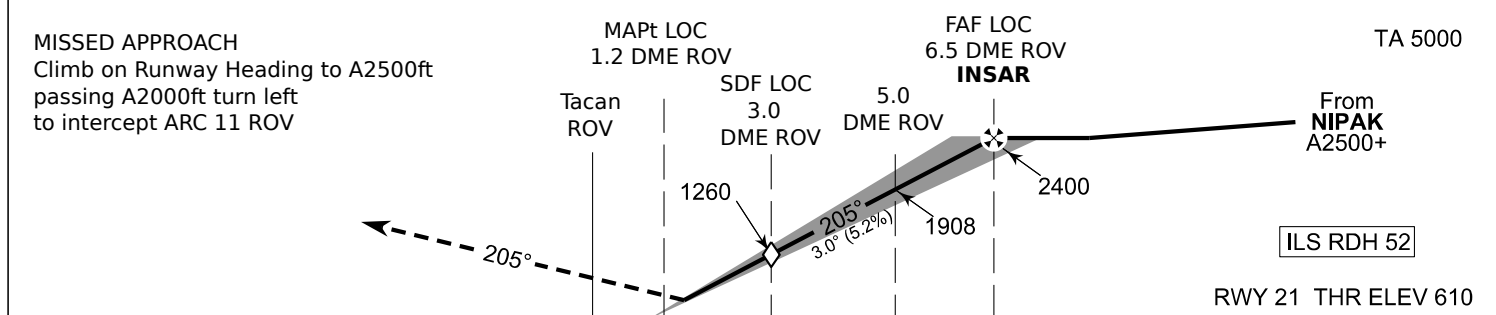
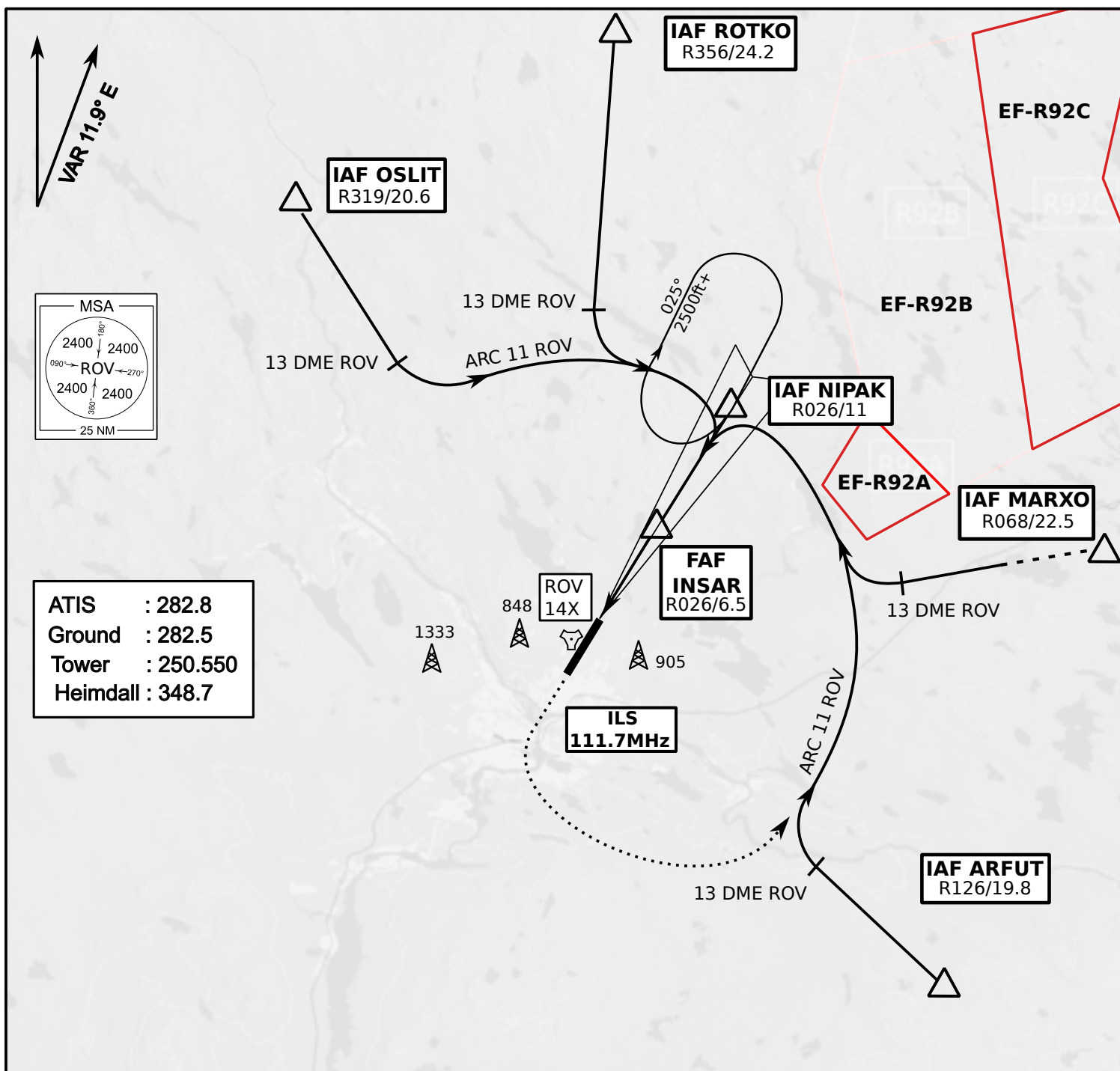
ROVANIEMI, FINLAND



ATIS	Ground	Tower	Radar
282.800	282.500	250.550	348.700



- Climb on Rwy heading to min A2000ft
- when passing A2000ft OR 5 DME ROV (whichever is later) turn to exit point
- Stay outside ARC 5 ROV
- if EF-R92B is active :
intercept R068 ROV inside 14 DME ROV to MARXO
- AB usage only if necessary for flight safety



OCA (H)	A	B	C	D
ILS CAT I	773 (164)	784 (175)	795 (186)	809 (200)
LOC	930 (320)			
LOC WO SDF	1260 (650)			
Circling	1120 (470)	1150 (510)	1300 (660)	1340 (690)

	kt	90	100	120	140	160
FAF - MAPt 5.4 NM	min:sec	3:36	3:14	2:42	2:19	2:01
Rate of descent	ft/min	480	530	640	740	850

Timing not authorized for defining the MAPt