

MISSION DATA CARD

OPORD		Callsign		Mission		Date/Time		
3589/2025		Outlaw 3		Training		302000JAN25		
Task						Freq		
AO						133.5		
Departure				Recovery				
Helicopter VFR				Helicopter VFR				
#	Callsign		Pilot		IFF	TCN	LSR	NET
-1	Outlaw 3-1		Hudson/Remotex		5731	1Y	1571	
-2	Outlaw 3-2		Warblade/Laud		5732	64Y	1572	

LOADOUT

A/A						GUN	100% HEDP
A/G	10xAGM114K					CHF	30
POD						FLR	60
TKS						FUEL	100%

TOLD

	Takeoff	Target	Joker	Bingo	Land
FUEL	2513				

AIRBASES

	Name	TCN	ATIS	GND	TWR	RWY	Elev	ILS
Dep	Akrotiri AFB	107X	288.2	240.1	339.85	28	62	109.7
Arr	Akrotiri AFB	107X	288.2	240.1	339.85	28	62	109.7

FLIGHTPLAN

#	Name	Navaid/Coords/DME	ALT	TOT
1	LAKE	N34 45.15 E032 55.40		
2	ITR.T1	N34 47.32 E032 58.62		

COMMS

Radio	Usage
1	133.5

RADIO CHANNELS

#	Freq	Name
1		Flight/Squadron specific
2	288.2	Akrotiri ATIS
3	240.1	Akrotiri Ground
4	339.85	Aktrotiri Tower
5	335.05	Akrotiri Approach
6	360.1	Incirlik Tower
7	371.35	Incirlik Ground
8	377.475	Incirlik ATIS
9		No Preset
10	127.3	Paphos ATIS
11	353.8	Paphos Tower
12	304.0	CVN-73 George Washington
13	302.0	LHA-1 Tarawa
14	259.0	CV-59 Forrestal
15		No Preset
16	377.8	Overlord
17	265.0	KC-135 Texaco-1 medium/slow
18	319.8	KC-135 Arco-1
19	360.8	KC-135MPRS Arco-2
20	256.0	S-3B Recovery Tanker

RAMROD

0	1	2	3	4	5	6	7	8	9
M	U	D	S	L	I	N	G	E	R

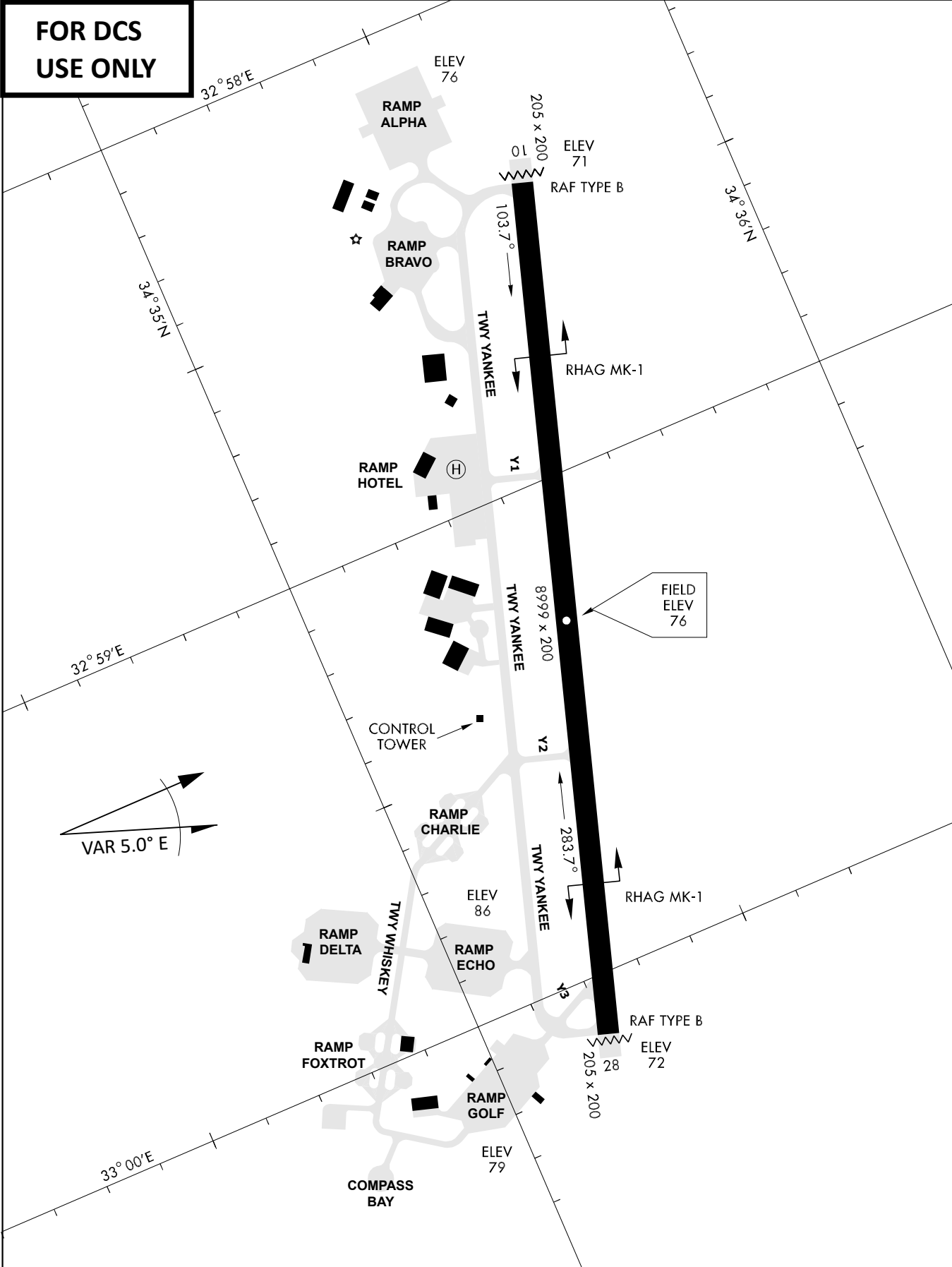
KTC 1400 C

	0	1	2	3	4	5	6	7	8	9
A	RCIQ	ANK	GFU	PX	TW	VSE	BY	DH	LJ	OM
B	OQXL	UGN	BEF	JD	AW	CIT	KM	HS	YP	VR
C	NWGJ	UPS	IRD	FX	AB	HOC	LQ	KT	ME	VY
D	LXFD	HNB	IQY	OP	RA	MKV	GE	JC	ST	UW
E	TPJA	WSB	CMR	HD	YQ	EOL	FV	KX	IN	GU
F	QNHD	SMP	AWX	GL	KJ	BEF	YV	RT	IU	CO
G	JQUW	OVF	APH	YM	RK	LBS	GD	TN	XI	CE
H	HBCK	JGS	LQU	OT	YW	RFI	XD	MN	EV	PA
I	WHLE	DSB	CMF	JK	PV	QYU	AT	OR	NI	XG
J	QTWC	RLK	AGX	OU	YM	JHP	FD	VN	SE	BI
K	WFKP	GXH	UTA	LO	NJ	SVE	DM	BR	QY	IC
L	YWHS	LVT	RQP	DB	MG	XUA	NK	CO	EJ	IF
M	ILJU	KXH	CFB	NG	VM	YRD	AQ	WE	OT	PS
N	MTHG	VQD	EIF	YB	XA	NUO	LP	CJ	WS	KR
O	MQBT	CWV	GXO	YJ	SD	AKP	HN	LF	RU	IE
P	UMFK	ANS	DVG	EJ	PO	IHC	WQ	YR	TL	XB
Q	DOSL	YWM	PQB	JA	FT	EUI	GR	KC	XN	HV
R	AXDR	TYI	VQS	KO	UJ	GBH	CE	WL	MP	NF
S	GNPK	THW	JSI	MR	UD	QEB	YV	XF	LO	AC
T	DOIX	EGP	QLK	WU	FM	YVS	JN	AB	HT	CR
U	PXLS	VRJ	YNQ	IU	EO	KAG	FC	DW	MT	HB
V	IKPX	GVW	MJB	SN	RL	OYH	DE	FA	TQ	UC
W	KIUS	BQA	CTG	PE	FD	JOH	MN	WV	LR	YX
X	RNDK	JXT	QYE	IL	SO	GUA	WP	HM	FV	BC
Y	PQJT	XSU	YAG	RF	VB	MDN	HE	IC	OK	WL

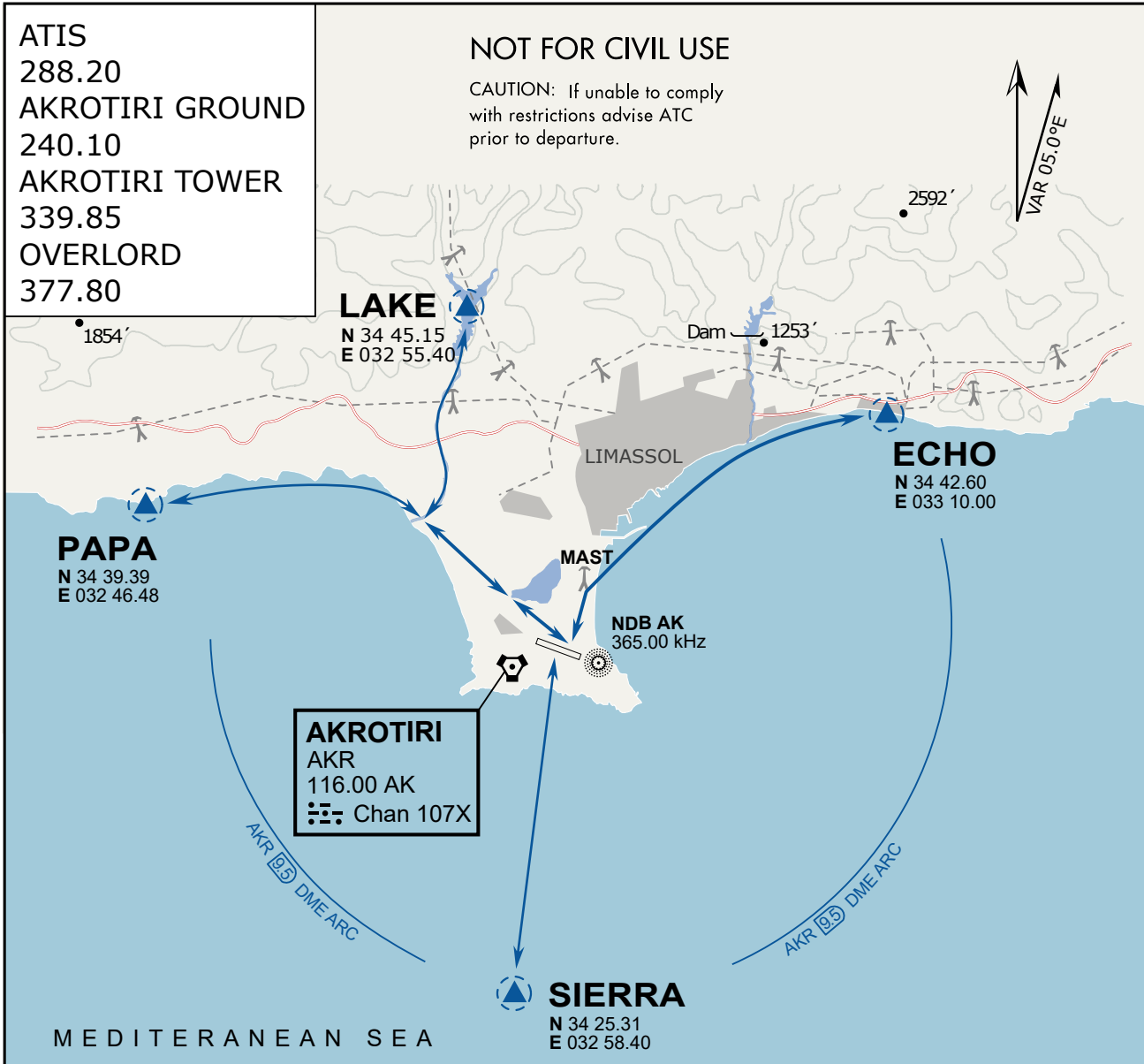
NAVAIDS

Id	Name	Channel	Position	Elevation
DAN	Incirlik	21	N37 00.950 E035 26.883	243
AKR	Akrotiri	107	N34 34.765 E032 57.769	147
PHA	Paphos	79	N34 42.997 E032 28.963	35
RMD	Ramat David	84	N32 39.892 E035 11.265	136
OS66	Kuweires Military Aviation Institute	36	N36 11.362 E037 34.226	1200

**FOR DCS
 USE ONLY**



ATIS	AKROTIRI GND	AKROTIRI TWR	OVERLORD CONTROL	TACAN	FIELD ELEVATION
288.20 MHz	240.10 122.10	339.85 130.075	377.8	AKR 107X	75 [ft] 23 [m]



ARR / DEP ROUTE DESCRIPTION

GENERAL

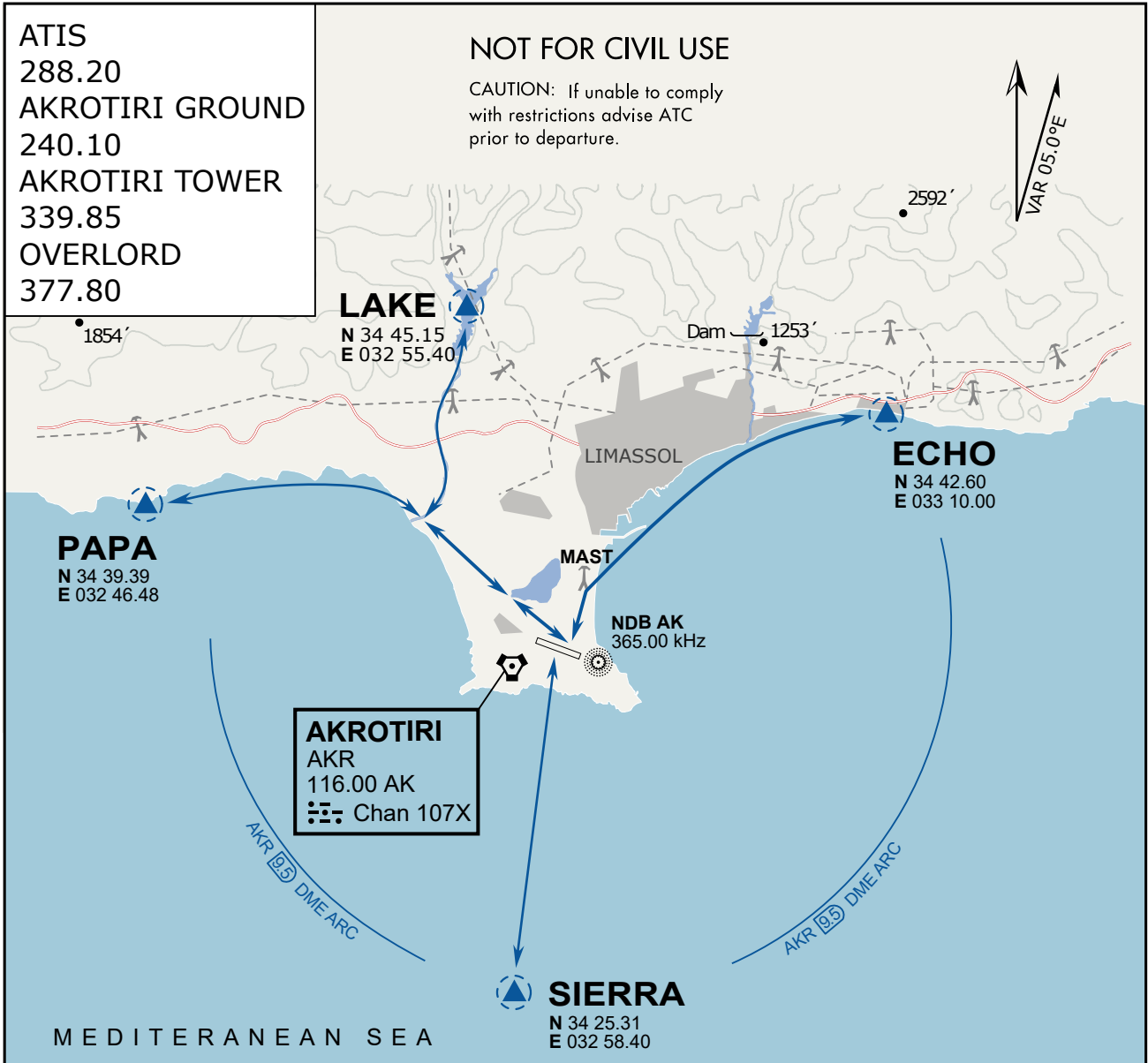
Stay at or below 500' AGL.

DEPARTURE

- ECHO: Via the 4 masts, along the coastline to EXIT.
- LAKE: Stay SOUTH WEST of the dry lake, to the river mouth, follow river to EXIT.
- PAPA: Stay SOUTH WEST of the dry lake, follow coastline to EXIT.
- SIERRA: Direct EXIT.

ARRIVAL

- LAKE: Follow river to coastline, then direct LCRA.
- PAPA: Follow coastline to rivermouth, then direct LCRA.
- ECHO: Follow coastline to the 4 masts, then to LCRA.
- SIERRA: Direct to LCRA.



ARR / DEP ROUTE DESCRIPTION

GENERAL

Stay at or below 500' AGL.

DEPARTURE

- ECHO: Via the 4 masts, along the coastline to EXIT.
- LAKE: Stay SOUTH WEST of the dry lake, to the river mouth, follow river to EXIT.
- PAPA: Stay SOUTH WEST of the dry lake, follow coastline to EXIT.
- SIERRA: Direct EXIT.

ARRIVAL

- LAKE: Follow river to coastline, then direct LCRA.
- PAPA: Follow coastline to rivermouth, then direct LCRA.
- ECHO: Follow coastline to the 4 masts, then to LCRA.
- SIERRA: Direct to LCRA.