

**MISSION DATA CARD**

OPORD		Callsign		Mission		Date/Time	
3588/2025		Monster 4		Training		302000JAN25	
Task	JDAM TRAINING					Freq	
AO	R65B/C					132.15	
Departure				Recovery			
FYTTR LOW				STRYK			
#	Callsign	Pilot	IFF	TCN	LSR	NET	
-1	Monster 4-1	addiks	1441	1Y	1611	21/01	
-2	Monster 4-2	Toolface	1442	64Y	1612	21/02	
-3	Monster 4-3	Stoner	1443	64X	1613	21/03	

**LOADOUT**

A/A	A9M	GUN	100% CM
A/G	7M282L, 2xG54	CHF	120
POD	A184L, TGP	FLR	360
TKS		FUEL	70%

**TOLD**

	Takeoff	Target	Joker	Bingo	Land
FUEL	7760				

**AIRBASES**

	Name	TCN	ATIS	GND	TWR	RWY	Elev	ILS
Dep	Nellis AFB	12X	270.1	275.8	327.0	21L	1850	109.1
Arr	Nellis AFB	12X	270.1	275.8	327.0	21L	1850	109.1
Div	Creech AFB	87X	290.45	275.8	360.6			

**FLIGHTPLAN**

#	Name	Navaid/Coords/DME	ALT	TOT
1	FYTTR	LSV 269/33 (N36 21.440 W115 41.470)	12000	
2	HOLDING	N36 55.792 W115 50.543	15000	
3	STRYK	LSV 282/26 (N36 25.620 W115 30.700)	9500	
4	GASS PEAK	LSV 309/12 (N36 24.140 W115 10.660)	8500	
5	APEX	LSV 027/09 (N36 21.580 W114 54.340)	4500	
6	SIMNS	LSV 276/8 (N36 17.340 W115 10.750)	5500	
7	CRAIG	LSV 263/5.5 (N36 15.250 W115 08.270)	5000	
8	Nellis	N36 14.680 W115 01.500	0	

**COMMS**

Radio	Usage
1	132.15
2	11-3-4-16-11-4-3

## NOTES

- Abflug über FYTTR-LOW
- Holding über R-65B
- Bomb-On-Target, Coordinates kommen per Funk
- Time-on-Target nach Absprache
- Multiple JDAM Release in R-65C
- (Optional) Tanken!
- Rückflug über STRYK

**SUPPORT****Tanker**

Callsign	TCN	Freq	ALT	TAS
TEXACO 1	94Y	265.0	17000	290
Pos	AR-641A: CDC 242/78 (N3728 W11439)			

**OTHER FLIGHTS**

Callsign	Mission	Airframe	Freq	TCN	Grpld	Laser
Tiger 1	Training	4x F/A-18C	261.15	1/64	1	155X
AO	R71S	Task	Toos Bombing			

**RADIO CHANNELS**

#	Freq	Name
1		Flight/Squadron specific
2	289.4	Nellis Clearance Delivery
3	275.8	Nellis Ground
4	327.0	Nellis Tower
5	385.4	Nellis Approach/Departure West
6	273.55	Nellis Approach/Departure East
7	317.525	Nellis Control -- Sally
8	254.4	Nellis Control-- Lee
9	305.6	SOF Bullseye
10	343.725	EMERGENCY SINGLE FRQ
11	270.1	Nellis ATIS
12	360.625	Creech AFB Tower
13	250.1	HAVE QUICK 13
14	251.1	HAVE QUICK 14
15	252.1	HAVE QUICK 15
16	377.8	Blackjack
17	265.0	KC-135 AR-641A
18	360.8	KC-135MPRS AR-635
19	319.8	KC-135MPRS AR-625
20	300.05	KC-135 AR-231V

**RAMROD**

0	1	2	3	4	5	6	7	8	9
M	U	D	S	L	I	N	G	E	R

**KTC 1400 C**

	0	1	2	3	4	5	6	7	8	9
A	RCIQ	ANK	GFU	PX	TW	VSE	BY	DH	LJ	OM
B	OQXL	UGN	BEF	JD	AW	CIT	KM	HS	YP	VR
C	NWGJ	UPS	IRD	FX	AB	HOC	LQ	KT	ME	VY
D	LXFD	HNB	IQY	OP	RA	MKV	GE	JC	ST	UW
E	TPJA	WSB	CMR	HD	YQ	EOL	FV	KX	IN	GU
F	QNHD	SMP	AWX	GL	KJ	BEF	YV	RT	IU	CO
G	JQUW	OVF	APH	YM	RK	LBS	GD	TN	XI	CE
H	HBCK	JGS	LQU	OT	YW	RFI	XD	MN	EV	PA
I	WHLE	DSB	CMF	JK	PV	QYU	AT	OR	NI	XG
J	QTWC	RLK	AGX	OU	YM	JHP	FD	VN	SE	BI
K	WFKP	GXH	UTA	LO	NJ	SVE	DM	BR	QY	IC
L	YWHS	LVT	RQP	DB	MG	XUA	NK	CO	EJ	IF
M	ILJU	KXH	CFB	NG	VM	YRD	AQ	WE	OT	PS
N	MTHG	VQD	EIF	YB	XA	NUO	LP	CJ	WS	KR
O	MQBT	CWV	GXO	YJ	SD	AKP	HN	LF	RU	IE
P	UMFK	ANS	DVG	EJ	PO	IHC	WQ	YR	TL	XB
Q	DOSL	YWM	PQB	JA	FT	EUI	GR	KC	XN	HV
R	AXDR	TYI	VQS	KO	UJ	GBH	CE	WL	MP	NF
S	GNPK	THW	JSI	MR	UD	QEB	YV	XF	LO	AC
T	DOIX	EGP	QLK	WU	FM	YVS	JN	AB	HT	CR
U	PXLS	VRJ	YNQ	IU	EO	KAG	FC	DW	MT	HB
V	IKPX	GVW	MJB	SN	RL	OYH	DE	FA	TQ	UC
W	KIUS	BQA	CTG	PE	FD	JOH	MN	WV	LR	YX
X	RNDK	JXT	QYE	IL	SO	GUA	WP	HM	FV	BC
Y	PQJT	XSU	YAG	RF	VB	MDN	HE	IC	OK	WL

**NAVAIDS**

<b>Id</b>	<b>Name</b>	<b>Channel</b>	<b>Position</b>	<b>Elevation</b>
BCE	Bryce Canyon	75	N3741.35 W11218.23	9040
BIH	Bishop	33	N3722.62 W11821.99	4114
BLD	Boulder	114	N3559.75 W11451.82	3650
BTY	Beatty	94	N3648.54 W11644.86	2925
CDC	Cedar City	120	N3747.24 W11304.90	5463
DAG	Daggett	79	N3457.75 W11634.69	1760
EED	Needles	99	N3445.96 W11428.43	650
GFS	Goffs	91	N3507.87 W11510.59	4019
GRL	Groom Lake	18	N3713.91 W11548.16	4475
HEC	Hector	74	N3447.83 W11627.78	1854
ILC	Wilson Creek	110	N3815.02 W11423.65	9318
INS	Creech AFB	87	N3635.20 W11540.12	3101
LAS	McCarran Intl	116	N3604.78 W11509.59	2142
LSV	Nellis	12	N3614.68 W11501.50	1864
MLF	Milford	58	N3821.62 W11300.79	4977
MMM	Mormon Mesa	90	N3646.16 W11416.65	2120
MVA	Mina	98	N3833.92 W11801.97	7860
OAL	Coale Dale	124	N3800.20 W11746.23	4800
PGS	Peach Springs	57	N3537.48 W11332.67	4754
TPH	Tonopah Muni	119	N3801.84 W11702.01	5330
TQQ	Silverbow	77	N3748.00 W11647.00	5500
UTI	St George	23	N3705.29 W11335.53	2871





PAR	RWY	CAT	MINIMA	ARP	ELEV	Scale 1:35'500
	21L	A B D E	2057 - 0.8 200 (200-0.8/1.6) GS 3°	36° 14.060° N 115° 01.058° W	1857 [ft] 566 [m]	0 300 600 900 1200 1500 [m]
	3R	A B D E	2057 - 0.8 200 (200-0.8/1.6) GS 3°			0 1000 2000 3000 4000 5000 [ft]
SRA	21R	A C D E	2257 - 1.2 350 (350-1.2/1.6)			
	3L	A C D E	2257 - 1.2 350 (350-1.2/1.6)			

RWY	TORA	TODA	ASDA	LDA	PSN	THR	ALS
21L	10051 [ft] 3063 [m]	11051 [ft] 3368 [m]	11051 [ft] 3368 [m]	10051 [ft] 3063 [m]	36°14.043' N	115°01.018' W	⊕
3R	10120 [ft] 3084 [m]	11120 [ft] 3398 [m]	11120 [ft] 3398 [m]	10120 [ft] 3084 [m]	36°13.029' N	115°02.038' W	

ATIS	NELLIS GROUND	NELLIS TOWER	NELLIS CONTROL	TACAN	ILS RWY 21L	NELLIS EAST	NELLIS WEST
270.100 MHz	275.800   121.800	327.000   132.55	317.525	LSV 12X	109.10 Mhz	384.400	385.000

# FYTTR LOW VISUAL OPERATION CHART | VALID 2014

ATIS  
270.100  
NELLIS GROUND  
275.800  
NELLIS TOWER  
327.000  
NELLIS CONTROL  
317.525  
NELLIS DEP/APP EAST  
384.400  
BLACKJACK  
377.800

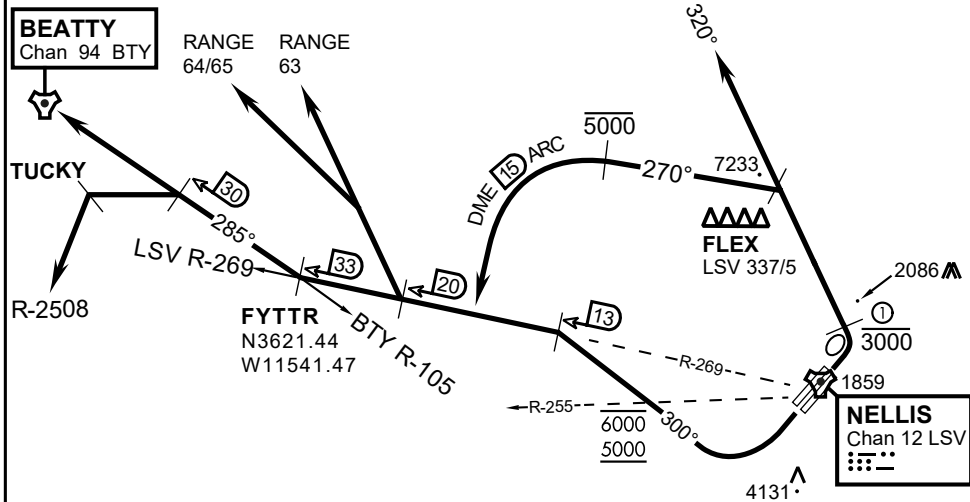
CAUTION: If unable to comply with restrictions advise ATC prior to departure.



## VMC ONLY

### PILOT RESPONSIBLE FOR TERRAIN AVOIDANCE

① 4 NM from RWY 3L/R



### DEPARTURE ROUTE DESCRIPTION

#### TAKEOFF RWY 3L/R:

- Remain below 3,000' MSL until north of Race Track and turned westbound.
- Turn left within 4NM of Nellis direct FLEX. Fly north of FLEX and turn left heading 270°.
- Intercept LSV 15 DME ARC at or below 5,000' MSL.
- ARC south, intercept LSV R-269 outbound. Maintain VFR.

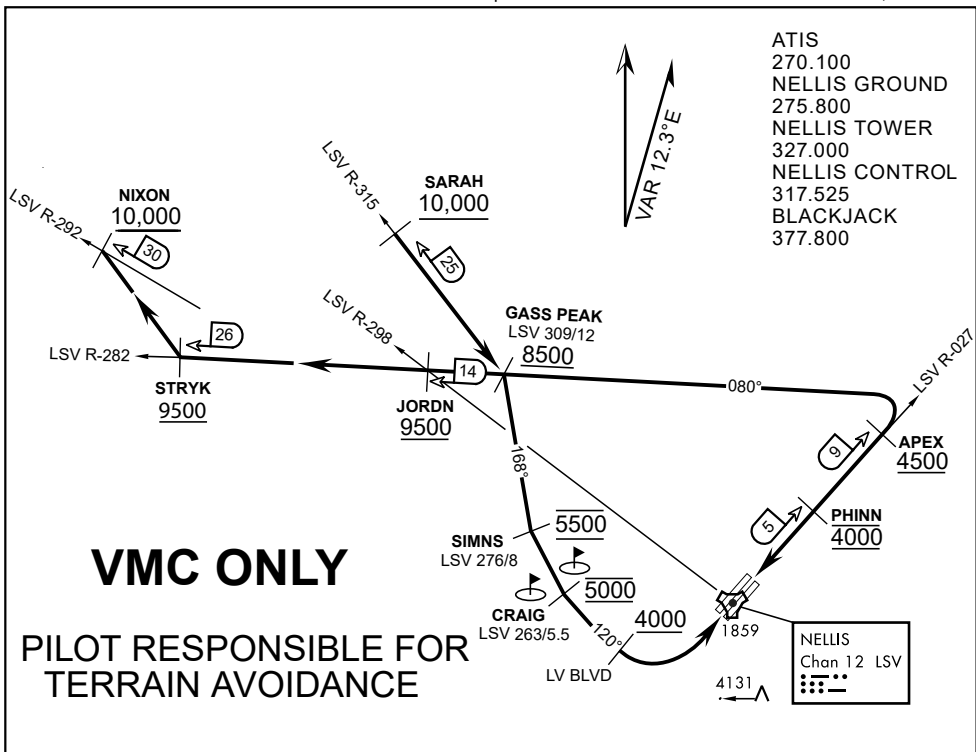
#### TAKEOFF RWY 21L/21R:

- Follow Noise Abatement Procedures.
- Fly runway heading until past Golf Course, turn right heading 300°.
- Cross LSV R-255 between 5,000' and 6,000' , intercept and proceed outbound on the LSV R-269. Recommend climb to 8,500' MSL or appropriate VFR altitude for overflight of North Las Vegas Training Area. Fly routing for appr. mission/transition.

#### TRANSITIONS:

- R-4806:** Turn right at the LSV 269/20 direct to assigned ranges.
- BEATTY:** Turn right at FYTTR direct BTY via the BTY R-105
- R-2508:** Turn right at the FYTTR, intercept the BTY 105/30, direct TUCKY, then direct R-2508

## FYTTR DEPARTURE AND TRANSITIONS (FYTTR LOW)



**APPROACH ROUTE DESCRIPTION**

**APPROACH RWY 3L/R**

Cross STRYK at or above 9,500' MSL, proceed direct GASS PEAK. Cross JORDN at or above 9,500' MSL, cross GASS PEAK at or above 8,500' MSL. Proceed direct SIMNS and cross at 5,500' MSL. Cross Las Vegas Blvd at or above 4,000' MSL then to 3,500' MSL for Initial. Remain within 4 DME if LSV on turn to final.

**VFR STRAIGHT-IN RWY 3L/R**

Depart CRAIG & descend to be at 3,000' MSL by Las Vegas Blvd. Do not descend below 3,000' MSL until within 5 DME of LSV or 4 NM of the runway on turn to final.

**APPROACH RWY 21L/R**

Cross STRYK at or above 9,500' MSL, proceed direct GASS PEAK. Cross JORDN at or above 9,500' MSL, cross GASS PEAK at or above 8,500' MSL. Cross APEX at or above 4,500' MSL then direct 5NM initial. Descend to cross PHINN at 4,000' MSL, Inside 5 NM descend to 3,500' MSL.

**VFR STRAIGHT-IN RWY 21L/R**

Cross APEX at 4,000' MSL. Descend to be at 3,000' MSL at PHINN. Descend to 3,000' MSL at LSV 027/5.

**RANGE 63B EXIT**

**SOUTH:** Via NIXON at or above 10,000' MSL, then direct STRYK.

**EAST:** Via SARAH at or above 10,000' MSL, then direct GASS PEAK.



INDIAN SPRINGS, NEVADA

TACAN INS Chan 87	APCH CRS 065°	Rwy ldg TDZE 3133	9002 3113
		Arpt Elev 3113	

INDIAN SPRINGS AF AUX (KINS)

▼ \* MISSED APPROACH: Straight ahead to INS TACAN, intercept INS R-outbound, cross 17 DME at or above 9500, then direkt KSV TACAN 114

NELLIS CON

CREECH AFB TOWER  
118.30 60.60

GND CON

NOT FOR CIVIL USE

FOR USE UNDER BASIC VFR WEATHER MINIMUMS ONLY

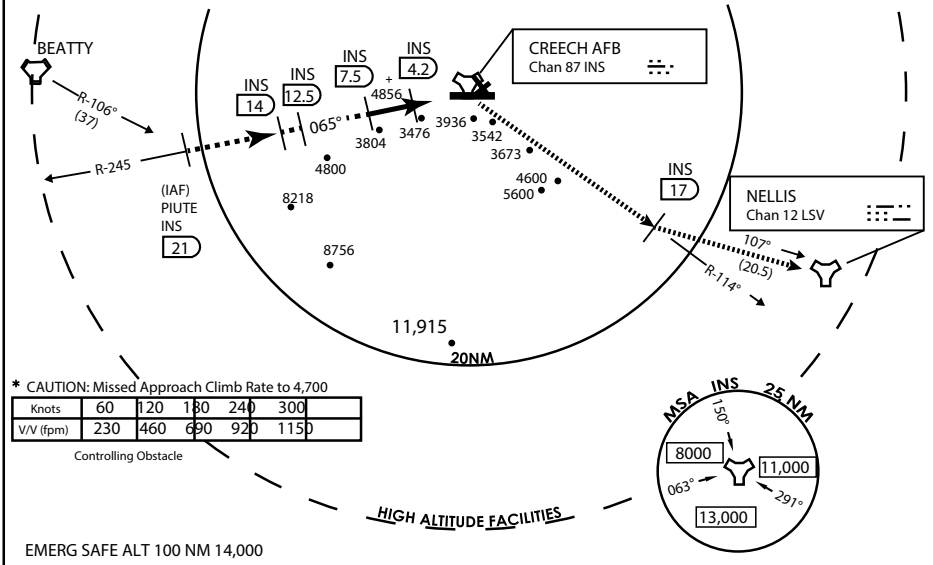
PILOT IS RESPONSIBLE FOR TERRAIN/OBSTACLE AVOIDANCE AND APPROPRIATE VFR CLOUD CLEARANCE FOR ALL

CAUTION: Descent gradients are greater than allowed under standard TERPS criteria and inbound course does not meet straight-in criteria

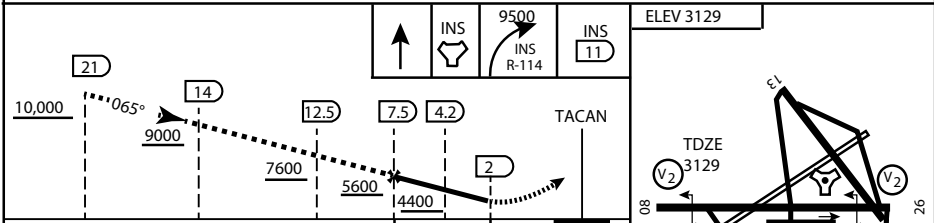
CAUTION: Final approach course crosses Runway centerline at MIDFIELD. Maneuvering left of course required prior to landing. Do not Maneuver farther north than the INS R- 258

Modified by vJaBoG 66 for use with DCS  
NOT FOR REAL LIFE NAVIGATION

Modified by vJaBoG 66 for use with DCS  
NOT FOR REAL LIFE NAVIGATION



EMERG SAFE ALT 100 NM 14,000



CATEGORY	A	B	C	D	E
S-8	3760-1 1/2	627 (700-1 1/2)	3760-1 3/4 627 (700-1 3/4)	3760-2 627 (700-2)	3760-2 1/4 627 (700-2 1/4)
CIRCLING	NOT AUTHORIZED				

MIRL Rwy 8-26

CITY OF INDIAN, NEVADA

INDIAN SPRINGS AF AUX (KINS)

(FOR DAY VFR USE ONLY)



# AIRPORT DIAGRAM

476 VFG

CREECH AFB (KINS)  
INDIAN SPRINGS, NEVADA

ATIS  
 122.5  
 CREECH TOWER  
 118.4 360.7 38.65  
 GND CON  
 118.3 275.8  
 CLNC DEL

FIELD  
 ELEV  
 3127

HOT  
 CARGO  
 PAD

VAR 12.5° E

WEST EOR

CONTROL  
 TOWER  
 BASE  
 OPS

RPA LOLA WEST

RPA LOLA EAST

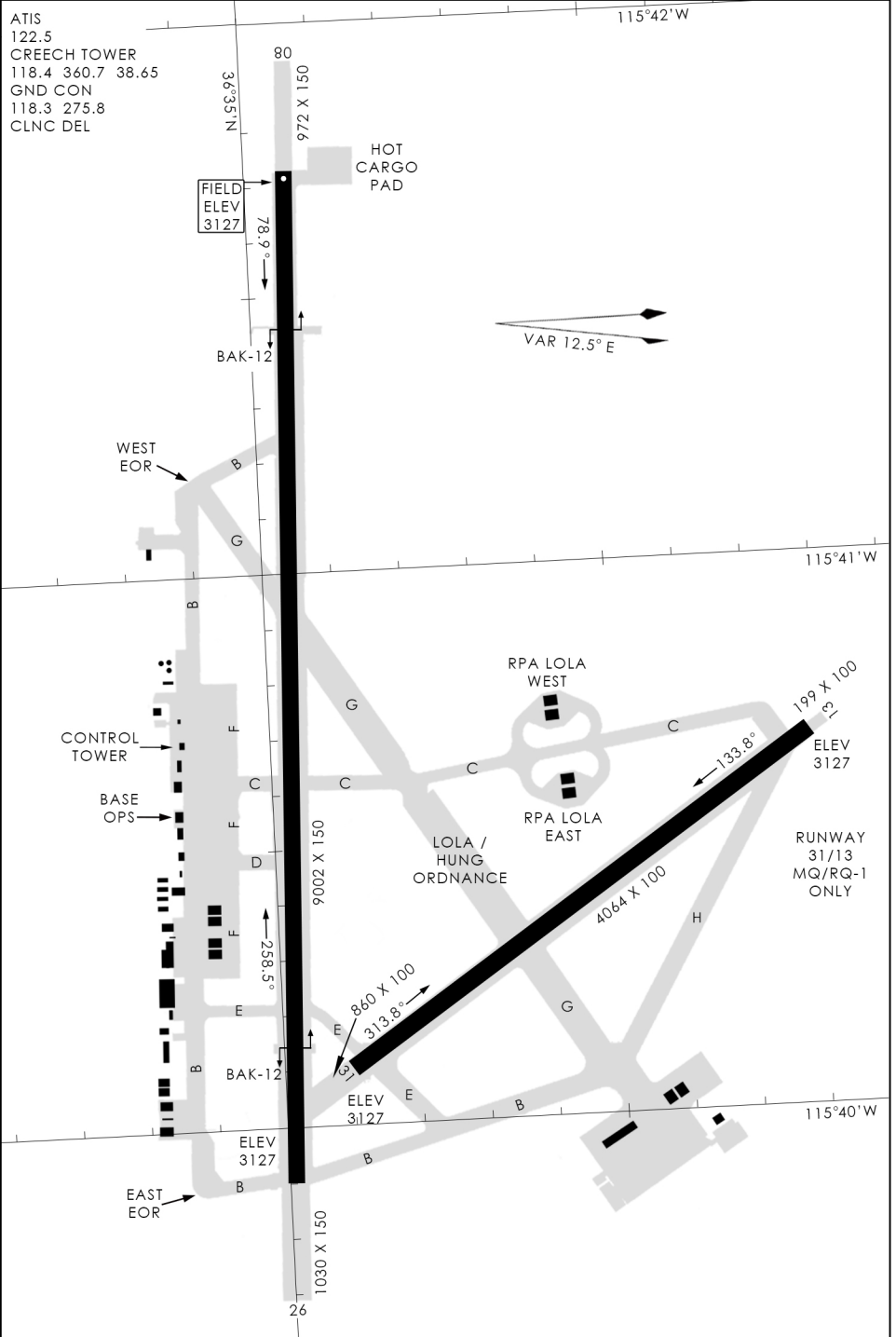
LOLA / HUNG ORDNANCE

RUNWAY  
 31/13  
 MQ/RQ-1  
 ONLY

EAST EOR

476 VFG JAN 2019

476 VFG JAN 2019



# AIRPORT DIAGRAM

INDIAN SPRINGS, NEVADA  
CREECH AFB (KINS)