

MISSION DATA CARD

OPORD		Callsign		Mission		Date/Time		
3587/2025		Nazgul 6		Training		300000JAN25		
Task						Freq		
AO						262.45		
Departure				Recovery				
DREAM FOUR				STRYK				
#	Callsign		Pilot		IFF	TCN	LSR	NET
-1	Nazgul 6-1		Repsus/UTA		1171	1Y	1561	

LOADOUT

A/A	2xA120C, 2xA9M				GUN	100% SAPHEI	
A/G	6xM82, 4xG12				CHF	120	
POD	TGT, NAV				FLR	60	
TKS					FUEL	100%	

TOLD

	Takeoff	Target	Joker	Bingo	Land
FUEL	22588				

AIRBASES

	Name	TCN	ATIS	GND	TWR	RWY	Elev	ILS
Dep	Nellis AFB	12X	270.1	275.8	327.0	21L	1850	109.1
Arr	Nellis AFB	12X	270.1	275.8	327.0	21L	1850	109.1

FLIGHTPLAN

#	Name	Navaid/Coords/DME	ALT	TOT
1	FYTTR	LSV 269/33 (N36 21.440 W115 41.470)	14000	
2	IP Apple	N36 40.090 W115 29.344		
3	ECHO	N36 46.752 W115 26.636		
4	FYTTR	LSV 269/33 (N36 21.440 W115 41.470)	9500	
5	APEX	LSV 027/09 (N36 21.580 W114 54.340)	4500	

RADIO CHANNELS

#	Freq	Name
1		Flight/Squadron specific
2	289.4	Nellis Clearance Delivery
3	275.8	Nellis Ground
4	327.0	Nellis Tower
5	385.4	Nellis Approach/Departure West
6	273.55	Nellis Approach/Departure East
7	317.525	Nellis Control -- Sally
8	254.4	Nellis Control-- Lee
9	305.6	SOF Bullseye
10	343.725	EMERGENCY SINGLE FRQ
11	270.1	Nellis ATIS
12	360.625	Creech AFB Tower
13	250.1	HAVE QUICK 13
14	251.1	HAVE QUICK 14
15	252.1	HAVE QUICK 15
16	377.8	Blackjack
17	265.0	KC-135 AR-641A
18	360.8	KC-135MPRS AR-635
19	319.8	KC-135MPRS AR-625
20	300.05	KC-135 AR-231V

RAMROD

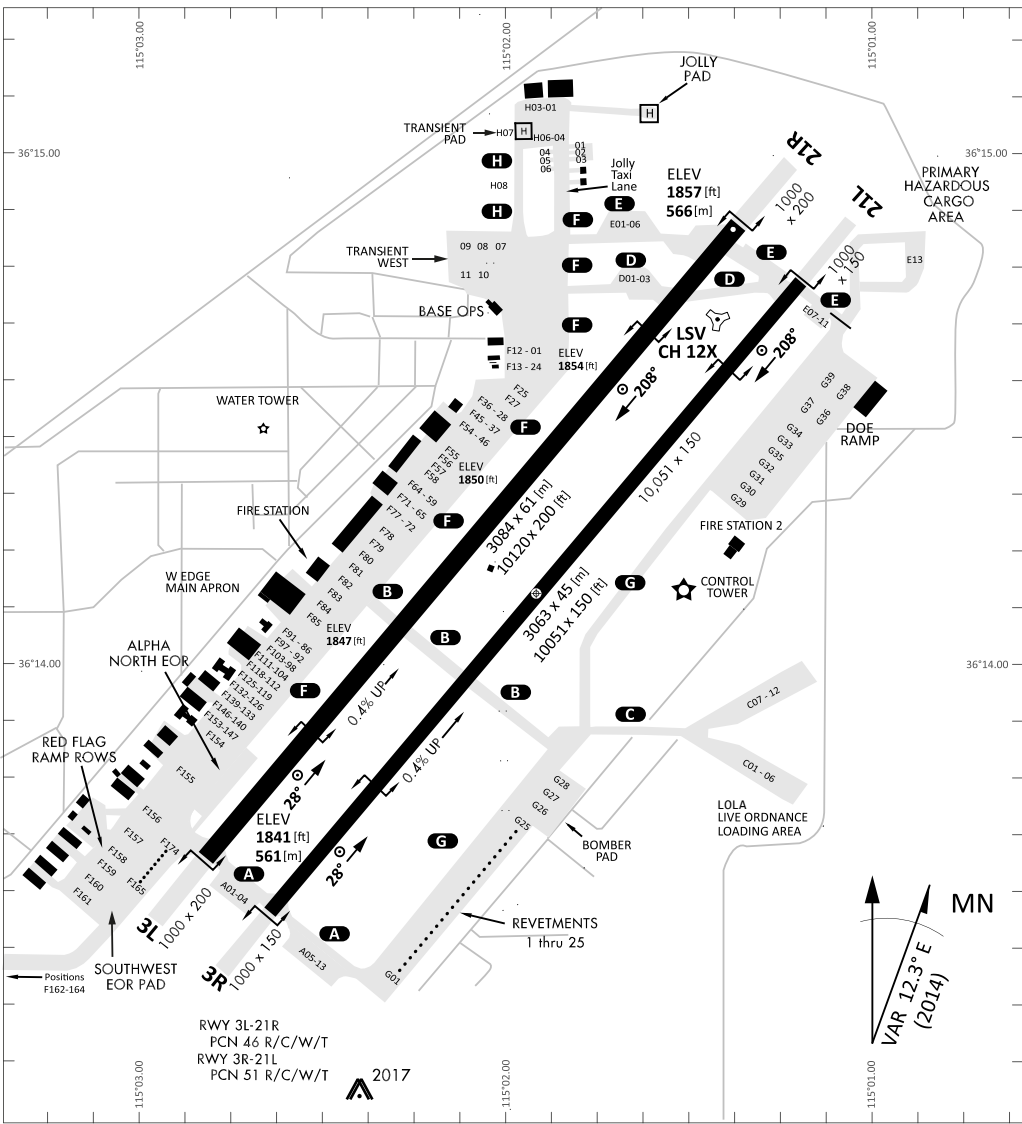
0	1	2	3	4	5	6	7	8	9
M	U	D	S	L	I	N	G	E	R

KTC 1400 C

	0	1	2	3	4	5	6	7	8	9
A	RCIQ	ANK	GFU	PX	TW	VSE	BY	DH	LJ	OM
B	OQXL	UGN	BEF	JD	AW	CIT	KM	HS	YP	VR
C	NWGJ	UPS	IRD	FX	AB	HOC	LQ	KT	ME	VY
D	LXFD	HNB	IQY	OP	RA	MKV	GE	JC	ST	UW
E	TPJA	WSB	CMR	HD	YQ	EOL	FV	KX	IN	GU
F	QNHD	SMP	AWX	GL	KJ	BEF	YV	RT	IU	CO
G	JQUW	OVF	APH	YM	RK	LBS	GD	TN	XI	CE
H	HBCK	JGS	LQU	OT	YW	RFI	XD	MN	EV	PA
I	WHLE	DSB	CMF	JK	PV	QYU	AT	OR	NI	XG
J	QTWC	RLK	AGX	OU	YM	JHP	FD	VN	SE	BI
K	WFKP	GXH	UTA	LO	NJ	SVE	DM	BR	QY	IC
L	YWHS	LVT	RQP	DB	MG	XUA	NK	CO	EJ	IF
M	ILJU	KXH	CFB	NG	VM	YRD	AQ	WE	OT	PS
N	MTHG	VQD	EIF	YB	XA	NUO	LP	CJ	WS	KR
O	MQBT	CWV	GXO	YJ	SD	AKP	HN	LF	RU	IE
P	UMFK	ANS	DVG	EJ	PO	IHC	WQ	YR	TL	XB
Q	DOSL	YWM	PQB	JA	FT	EUI	GR	KC	XN	HV
R	AXDR	TYI	VQS	KO	UJ	GBH	CE	WL	MP	NF
S	GNPK	THW	JSI	MR	UD	QEB	YV	XF	LO	AC
T	DOIX	EGP	QLK	WU	FM	YVS	JN	AB	HT	CR
U	PXLS	VRJ	YNQ	IU	EO	KAG	FC	DW	MT	HB
V	IKPX	GVW	MJB	SN	RL	OYH	DE	FA	TQ	UC
W	KIUS	BQA	CTG	PE	FD	JOH	MN	WV	LR	YX
X	RNDK	JXT	QYE	IL	SO	GUA	WP	HM	FV	BC
Y	PQJT	XSU	YAG	RF	VB	MDN	HE	IC	OK	WL

NAVAIDS

Id	Name	Channel	Position	Elevation
BCE	Bryce Canyon	75	N3741.35 W11218.23	9040
BIH	Bishop	33	N3722.62 W11821.99	4114
BLD	Boulder	114	N3559.75 W11451.82	3650
BTY	Beatty	94	N3648.54 W11644.86	2925
CDC	Cedar City	120	N3747.24 W11304.90	5463
DAG	Daggett	79	N3457.75 W11634.69	1760
EED	Needles	99	N3445.96 W11428.43	650
GFS	Goffs	91	N3507.87 W11510.59	4019
GRL	Groom Lake	18	N3713.91 W11548.16	4475
HEC	Hector	74	N3447.83 W11627.78	1854
ILC	Wilson Creek	110	N3815.02 W11423.65	9318
INS	Creech AFB	87	N3635.20 W11540.12	3101
LAS	McCarran Intl	116	N3604.78 W11509.59	2142
LSV	Nellis	12	N3614.68 W11501.50	1864
MLF	Milford	58	N3821.62 W11300.79	4977
MMM	Mormon Mesa	90	N3646.16 W11416.65	2120
MVA	Mina	98	N3833.92 W11801.97	7860
OAL	Coale Dale	124	N3800.20 W11746.23	4800
PGS	Peach Springs	57	N3537.48 W11332.67	4754
TPH	Tonopah Muni	119	N3801.84 W11702.01	5330
TQQ	Silverbow	77	N3748.00 W11647.00	5500
UTI	St George	23	N3705.29 W11335.53	2871



PAR	RWY	CAT	MINIMA	ARP	ELEV	Scale 1:35'500
	21L	A B D E	2057 - 0.8 200 (200-0.8/1.6) GS 3°	36° 14.060° N 115° 01.058° W	1857 [ft] 566 [m]	0 300 600 900 1200 1500 [m]
	3R	A B D E	2057 - 0.8 200 (200-0.8/1.6) GS 3°			0 1000 2000 3000 4000 5000 [ft]
SRA	21R	A C D E	2257 - 1.2 350 (350-1.2/1.6)			
	3L	A C D E	2257 - 1.2 350 (350-1.2/1.6)			

RWY	TORA	TODA	ASDA	LDA	PSN	THR	ALS
21L	10051 [ft] 3063 [m]	11051 [ft] 3368 [m]	11051 [ft] 3368 [m]	10051 [ft] 3063 [m]	36°14.043' N	115°01.018' W	⊕
3R	10120 [ft] 3084 [m]	11120 [ft] 3398 [m]	11120 [ft] 3398 [m]	10120 [ft] 3084 [m]	36°13.029' N	115°02.038' W	

ATIS	NELLIS GROUND	NELLIS TOWER	NELLIS CONTROL	TACAN	ILS RWY 21L	NELLIS EAST	NELLIS WEST
270.100 MHz	275.800 121.800	327.000 132.55	317.525	LSV 12X	109.10 Mhz	384.400	385.000

DREAM FOUR DEPARTURE DREAM4 | VALID 2014

NELLIS AFB (KLSV)

LAS VEGAS, NEVADA

ATIS
270.100
NELLIS GROUND
275.800
NELLIS TOWER
327.000
NELLIS CONTROL
317.525
NELLIS DEP/APP EAST
384.400
BLACKJACK
377.800

DREAM

N3710.34
W11459.53

MINTT
LAS 351/38
17,000

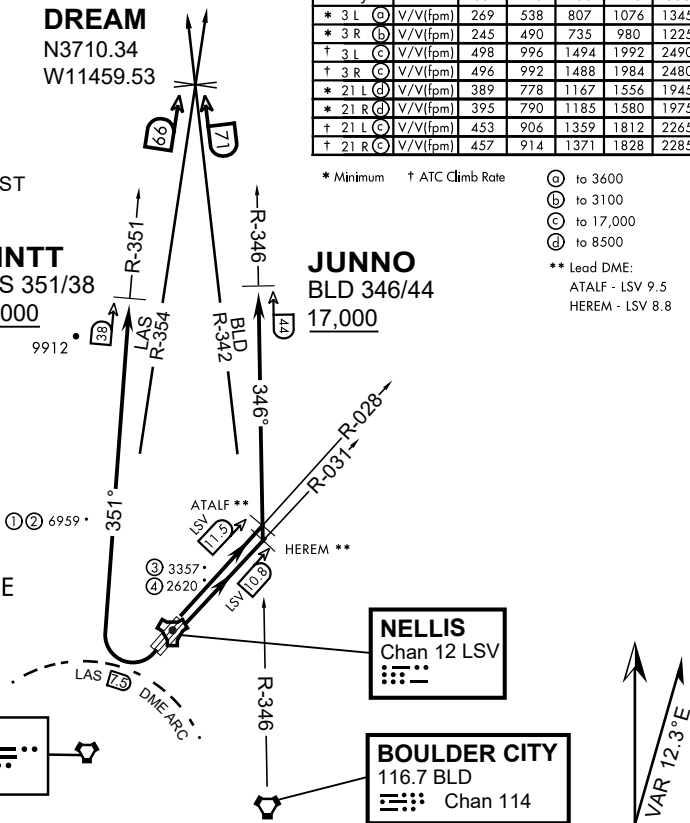
JUNNO
BLD 346/44
17,000

Rwy	Knots	60	120	180	240	300	360
* 3 L (A)	V/Vl(fpm)	269	538	807	1076	1345	1614
* 3 R (B)	V/Vl(fpm)	245	490	735	980	1225	1470
† 3 L (C)	V/Vl(fpm)	498	996	1494	1992	2490	2988
† 3 R (C)	V/Vl(fpm)	496	992	1488	1984	2480	2976
* 21 L (D)	V/Vl(fpm)	389	778	1167	1556	1945	2334
* 21 R (D)	V/Vl(fpm)	395	790	1185	1580	1975	2370
† 21 L (C)	V/Vl(fpm)	453	906	1359	1812	2265	2718
† 21 R (C)	V/Vl(fpm)	457	914	1371	1828	2285	2742

* Minimum † ATC Climb Rate

- (A) to 3600
 - (B) to 3100
 - (C) to 17,000
 - (D) to 8500
- ** Lead DME:
ATALF - LSV 9.5
HEREM - LSV 8.8

- ① 12.24 NM from Rwy 21R
- ② 12.40 NM from Rwy 21L
- ③ 5.67 NM from Rwy 3L
- ④ 5.85 NM from Rwy 3R



NOT FOR CIVIL USE

CAUTION: If unable to comply with restrictions advise ATC prior to departure.

DEPARTURE ROUTE DESCRIPTION

TAKE-OFF RWY 3L

- Fly runway heading to intercept the LSV TACAN R-028 then direct ATALF, intercept the BLD VORTAC R-346 then direct JUNNO, cross JUNNO at or above 17,000, then via assigned route.

TAKE-OFF RWY 3R

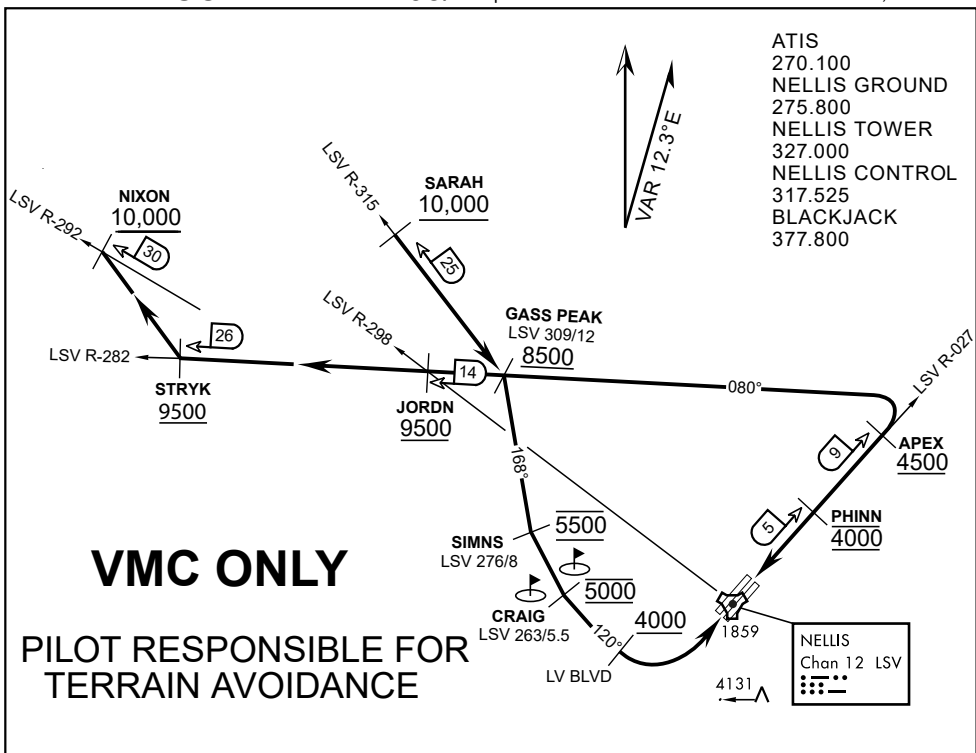
- Fly runway heading to intercept the LSV TACAN R-031 then direct HEREM, intercept the BLD VORTAC R-346 then direct JUNNO, cross JUNNO at or above 17,000, then via assigned route.

TAKE-OFF RWY 21L/R

- Turn right to intercept LAS VORTAC R-351 outbound. Remain North of LAS 7.5 DME turning Northbound. Intercept LAS R-351 between 5000 and 6000, do not proceed West of LAS R-351. Cross MINTT at or above 17,000, then via assigned route.

NOISE ABATMENT PROCEDURES: Fly acc. Nellis Noise Abatement instructions

DREAM FOUR DEPARTURE (DREAM4 • DREAM)



APPROACH ROUTE DESCRIPTION

APPROACH RWY 3L/R

Cross STRYK at or above 9,500' MSL, proceed direct GASS PEAK. Cross JORDN at or above 9,500' MSL, cross GASS PEAK at or above 8,500' MSL. Proceed direct SIMNS and cross at 5,500' MSL. Cross Las Vegas Blvd at or above 4,000' MSL then to 3,500' MSL for Initial. Remain within 4 DME if LSV on turn to final.

VFR STRAIGHT-IN RWY 3L/R

Depart CRAIG & descend to be at 3,000' MSL by Las Vegas Blvd. Do not descend below 3,000' MSL until within 5 DME of LSV or 4 NM of the runway on turn to final.

APPROACH RWY 21L/R

Cross STRYK at or above 9,500' MSL, proceed direct GASS PEAK. Cross JORDN at or above 9,500' MSL, cross GASS PEAK at or above 8,500' MSL. Cross APEX at or above 4,500' MSL then direct 5NM initial. Descend to cross PHINN at 4,000' MSL, Inside 5 NM descend to 3,500' MSL.

VFR STRAIGHT-IN RWY 21L/R

Cross APEX at 4,000' MSL. Descend to be at 3,000' MSL at PHINN. Descend to 3,000' MSL at LSV 027/5.

RANGE 63B EXIT

SOUTH: Via NIXON at or above 10,000' MSL, then direct STRYK.

EAST: Via SARAH at or above 10,000' MSL, then direct GASS PEAK.