

MISSION DATA CARD

OPORD		Callsign		Mission		Date/Time		
3584/2025		Nazgul 7		Training		272000JAN25		
Task						Freq		
AO						262.45		
Departure				Recovery				
FYTTR THREE				STRYK				
#	Callsign		Pilot		IFF	TCN	LSR	NET
-1	Nazgul 7-1		Striver/UTA		1171	1Y	1561	
-2	Nazgul 7-2		Tank		1172	64Y	1562	
-3	Nazgul 7-3		Repsus/Lempo		1173	64X	1563	

LOADOUT

A/A	2xA120C, 2xA9M				GUN	100% SAPHEI
A/G	6xM82, 4xG12				CHF	120
POD	TGT, NAV				FLR	60
TKS					FUEL	100%

TOLD

	Takeoff	Target	Joker	Bingo	Land
FUEL	22588				

AIRBASES

	Name	TCN	ATIS	GND	TWR	RWY	Elev	ILS
Dep	Nellis AFB	12X	270.1	275.8	327.0	21L	1850	109.1
Arr	Nellis AFB	12X	270.1	275.8	327.0	21L	1850	109.1

FLIGHTPLAN

#	Name	Navaid/Coords/DME	ALT	TOT
1	FYTTR	LSV 269/33 (N36 21.440 W115 41.470)	14000	
2	IP	N35 34.881 W116 42.391		
3	ECHO	N35 34.755 W116 43.449	2056	
4	FYTTR	LSV 269/33 (N36 21.440 W115 41.470)	9500	
5	APEX	LSV 027/09 (N36 21.580 W114 54.340)	4500	

OTHER FLIGHTS

Callsign	Mission	Airframe	Freq	TCN	Grpld	Laser
Joker* 4	Training	1x F/A-18C	264.1	13/76		170X
AO	R74C	Task	Range 74C Laser Bombing			
Edelweiss 6	Training	2x F/A-18C	134.65	1/64	40	166X
AO	RANGE 64C	Task				
T-Rex 1	Training	4x A-10C	132.25	1/64	25	165X
AO	GROOM LAKE	Task	SAM Defense			

RADIO CHANNELS

#	Freq	Name
1		Flight/Squadron specific
2	289.4	Nellis Clearance Delivery
3	275.8	Nellis Ground
4	327.0	Nellis Tower
5	385.4	Nellis Approach/Departure West
6	273.55	Nellis Approach/Departure East
7	317.525	Nellis Control -- Sally
8	254.4	Nellis Control-- Lee
9	305.6	SOF Bullseye
10	343.725	EMERGENCY SINGLE FRQ
11	270.1	Nellis ATIS
12	360.625	Creech AFB Tower
13	250.1	HAVE QUICK 13
14	251.1	HAVE QUICK 14
15	252.1	HAVE QUICK 15
16	377.8	Blackjack
17	265.0	KC-135 AR-641A
18	360.8	KC-135MPRS AR-635
19	319.8	KC-135MPRS AR-625
20	300.05	KC-135 AR-231V

RAMROD

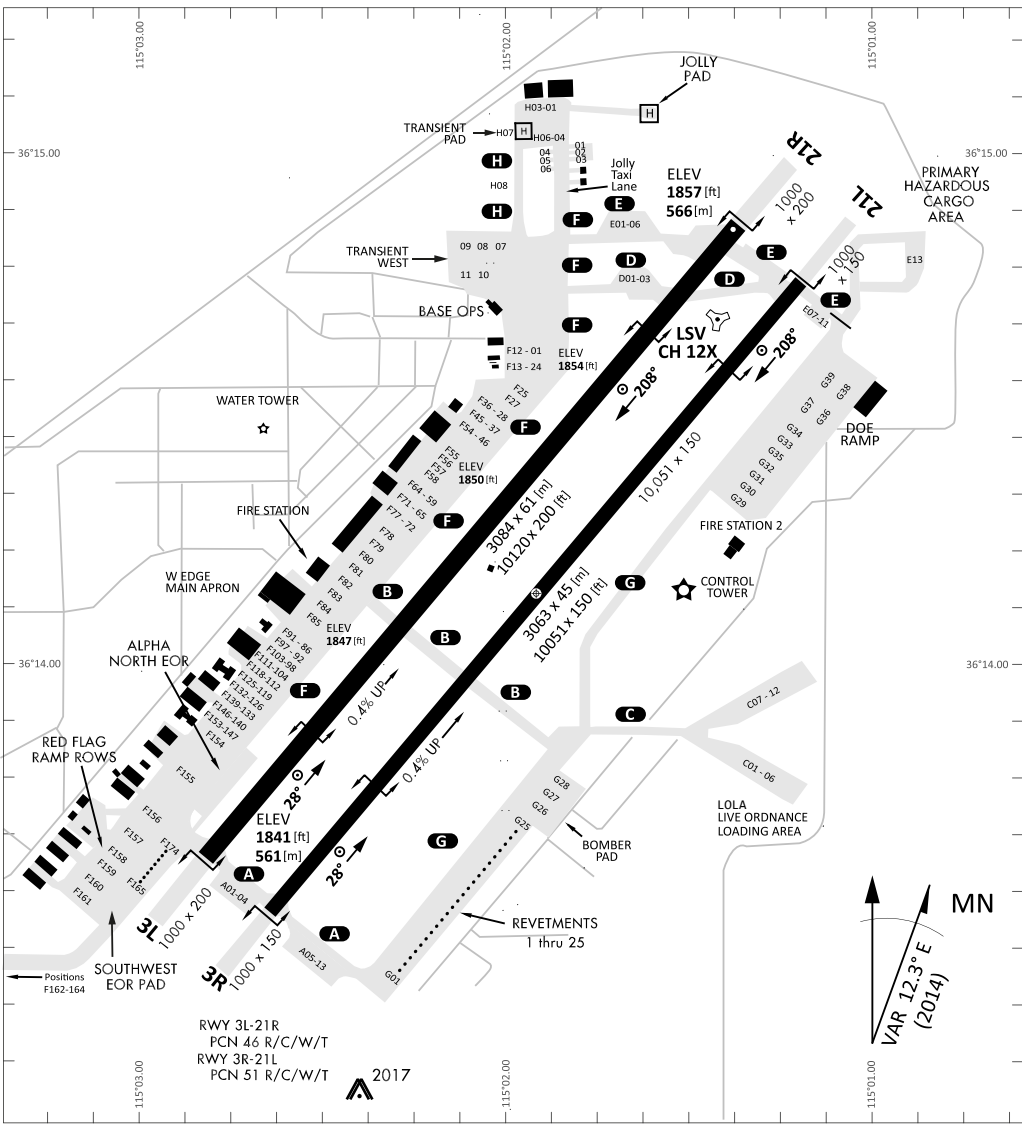
0	1	2	3	4	5	6	7	8	9
O	V	E	R	N	I	G	H	T	S

KTC 1400 C

	0	1	2	3	4	5	6	7	8	9
A	QWRM	ICB	YPO	JE	DN	FST	KH	AV	UL	GX
B	EFHW	NIL	VCX	RQ	AU	MBJ	OD	GT	KS	YP
C	WPDS	JYF	LGU	TX	ME	KHN	BA	IQ	OV	CR
D	KAXL	PHM	BFS	NG	YO	WCQ	DE	UR	TV	IJ
E	FGTJ	PLN	USH	DA	BW	IYO	EM	XV	QR	KC
F	MWFN	QXA	PKV	IH	UE	CBY	RS	GL	TO	JD
G	GAVN	OIQ	JSB	MT	YU	DKH	RC	WF	XP	EL
H	QDOS	JEU	AXF	CK	WP	LRY	NM	VH	IB	TG
I	QKAC	UJM	FPB	TW	EY	NRG	SD	OI	LX	VH
J	AEDL	JVB	RMG	QP	CK	UIF	NS	XO	WT	YH
K	BHAK	LOC	XUQ	FR	GM	EWP	DN	TV	SJ	YI
L	OEBR	KMF	QWG	CU	XA	NIJ	SL	TY	DP	VH
M	GXPO	MVE	WLN	RC	UB	HIY	SQ	TD	JF	AK
N	TXFJ	MNB	QOC	DL	AK	UVE	IS	GW	RY	PH
O	LPYV	KID	XWG	ME	ON	AJT	BS	UF	HQ	RC
P	PNFK	HXL	JSY	EM	AG	DQC	UV	TR	IW	BO
Q	RIAW	KFY	LTE	MN	OQ	XUV	GJ	SP	DB	CH
R	HRKM	POF	IEV	XS	TB	GUL	DW	NQ	YA	JC
S	TKHU	BRD	QFA	LS	GE	PWO	CN	JM	XI	VY
T	BOVR	AHU	SGD	FI	KN	PEJ	QY	LC	XM	WT
U	XHEA	YFR	OTK	DM	UC	WBJ	NP	VI	SL	GQ
V	CLBW	PVE	YSG	DK	HN	MOU	IT	JA	QX	FR
W	GPYW	VIQ	BAC	HS	RL	FEX	UJ	DT	KN	OM
X	AHFS	WPO	UNL	TM	IJ	DQE	GK	RV	BC	YX
Y	WCBM	NYJ	HRI	VS	QA	LXF	EG	TU	PO	KD

NAVAIDS

Id	Name	Channel	Position	Elevation
BCE	Bryce Canyon	75	N3741.35 W11218.23	9040
BIH	Bishop	33	N3722.62 W11821.99	4114
BLD	Boulder	114	N3559.75 W11451.82	3650
BTY	Beatty	94	N3648.54 W11644.86	2925
CDC	Cedar City	120	N3747.24 W11304.90	5463
DAG	Daggett	79	N3457.75 W11634.69	1760
EED	Needles	99	N3445.96 W11428.43	650
GFS	Goffs	91	N3507.87 W11510.59	4019
GRL	Groom Lake	18	N3713.91 W11548.16	4475
HEC	Hector	74	N3447.83 W11627.78	1854
ILC	Wilson Creek	110	N3815.02 W11423.65	9318
INS	Creech AFB	87	N3635.20 W11540.12	3101
LAS	McCarran Intl	116	N3604.78 W11509.59	2142
LSV	Nellis	12	N3614.68 W11501.50	1864
MLF	Milford	58	N3821.62 W11300.79	4977
MMM	Mormon Mesa	90	N3646.16 W11416.65	2120
MVA	Mina	98	N3833.92 W11801.97	7860
OAL	Coale Dale	124	N3800.20 W11746.23	4800
PGS	Peach Springs	57	N3537.48 W11332.67	4754
TPH	Tonopah Muni	119	N3801.84 W11702.01	5330
TQQ	Silverbow	77	N3748.00 W11647.00	5500
UTI	St George	23	N3705.29 W11335.53	2871



RWY 3L-21R
 PCN 46 R/C/W/T
 RWY 3R-21L
 PCN 51 R/C/W/T
 2017

PAR	RWY	CAT	MINIMA		ARP	ELEV	Scale 1:35'500	
	21L	A B D E	2057 - 0.8 200 (200-0.8/1.6)	GS 3°	36° 14.060° N 115° 01.058° W	1857 [ft] 566 [m]	0	300
	3R	A B D E	2057 - 0.8 200 (200-0.8/1.6)	GS 3°			0	1000
	21R	A C D E	2257 - 1.2 350 (350-1.2/1.6)				0	2000
	3L	A C D E	2257 - 1.2 350 (350-1.2/1.6)				0	3000
							0	4000
							0	5000

RWY	TORA	TODA	ASDA	LDA	PSN	THR	ALS
21L	10051 [ft] 3063 [m]	11051 [ft] 3368 [m]	11051 [ft] 3368 [m]	10051 [ft] 3063 [m]	36°14.043' N	115°01.018' W	⊕
3R	10120 [ft] 3084 [m]	11120 [ft] 3398 [m]	11120 [ft] 3398 [m]	10120 [ft] 3084 [m]	36°13.029' N	115°02.038' W	

ATIS	NELLIS GROUND	NELLIS TOWER	NELLIS CONTROL	TACAN	ILS RWY 21L	NELLIS EAST	NELLIS WEST
270.100 MHz	275.800 121.800	327.000 132.55	317.525	LSV 12X	109.10 Mhz	384.400	385.000

FYTTTR THREE DEPARTURE IFR CHART | VALID 2014 LAS VEGAS, NEVADA

ATIS
270.100
NELLIS GROUND
275.800
NELLIS TOWER
327.000
NELLIS CONTROL
317.525
NELLIS DEP/APP EAST
384.400
BLACKJACK
377.800



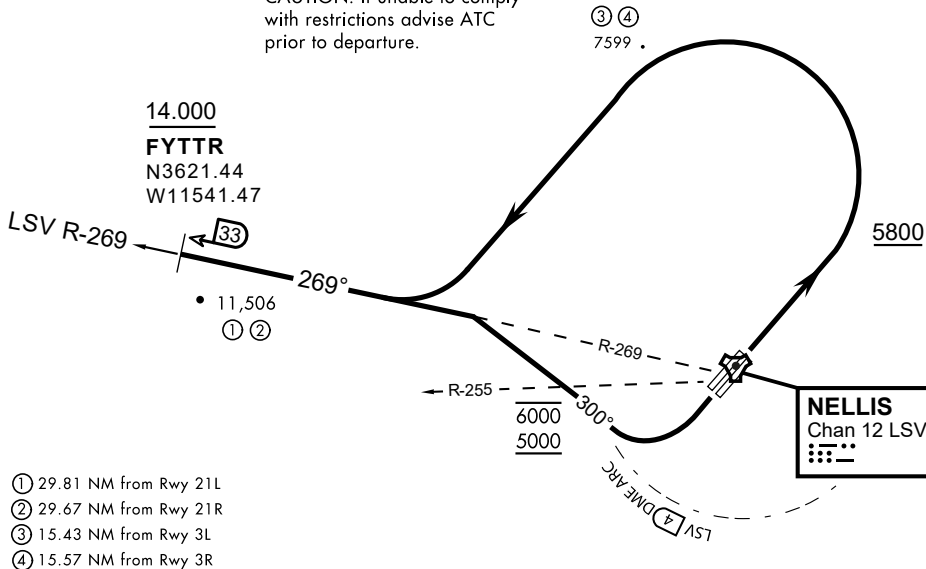
Rwy	Knots	60	120	180	240	300	360
3L (a)	V/V(fpm)	394	788	1182	1576	1970	2364
3R (a)	V/V(fpm)	392	784	1176	1568	1960	2352
21L (b)	V/V(fpm)	388	776	1164	1552	1940	2328
21R (b)	V/V(fpm)	390	780	1170	1560	1950	2340

Minimum Climb Rate

(a) to 9300

(b) to 13 500

CAUTION: If unable to comply with restrictions advise ATC prior to departure.



- ① 29.81 NM from Rwy 21L
- ② 29.67 NM from Rwy 21R
- ③ 15.43 NM from Rwy 3L
- ④ 15.57 NM from Rwy 3R

DEPARTURE ROUTE DESCRIPTION

TAKEOFF RWY 3L/R

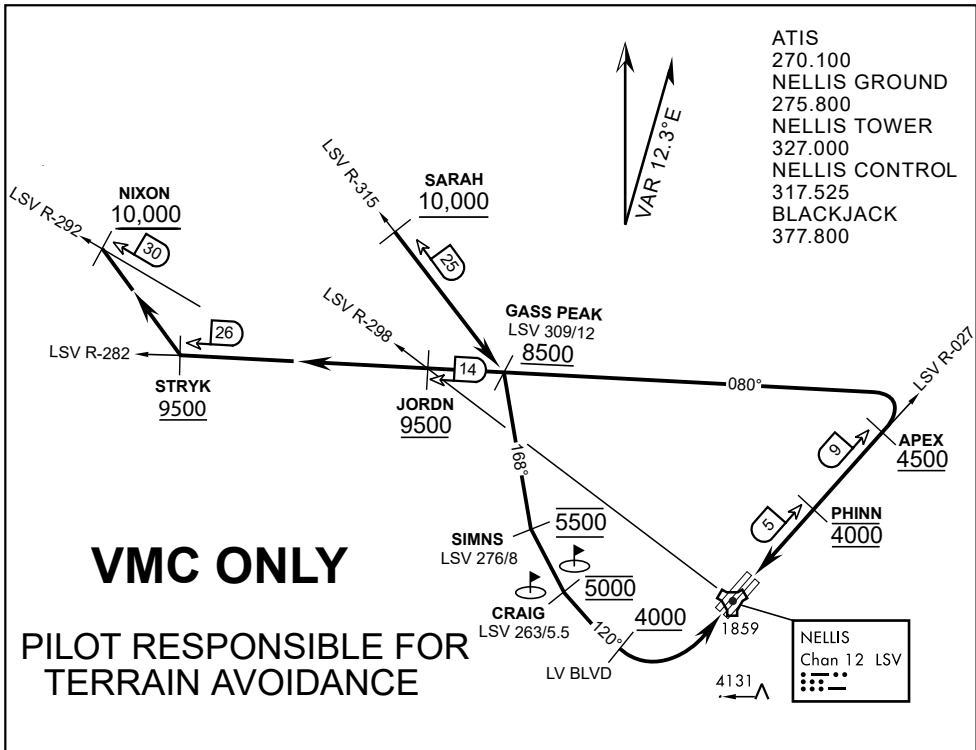
- Fly runway heading until reaching 5,800'.
- Then climbing left turn to intercept LSV TACAN R-269 outbound.
- Cross FYTTTR at or above 14,000' or as assigned, then via assigned route.

TAKEOFF RWY 21L/21R

- Turn right to intercept LSV TACAN R-269 outbound.
- Remain within LSV 4 DME until joining LSV R-269
- Cross R-255 between 5,000' and 6,000'.
- Cross FYTTTR at or above 14,000' or as assigned, then via assigned route.

NOISE ABATEMENT PROCEDURES:

Fly according Nellis Noise Abatement instructions as published



APPROACH ROUTE DESCRIPTION

APPROACH RWY 3L/R

Cross STRYK at or above 9,500' MSL, proceed direct GASS PEAK. Cross JORDN at or above 9,500' MSL, cross GASS PEAK at or above 8,500' MSL. Proceed direct SIMNS and cross at 5,500' MSL. Cross Las Vegas Blvd at or above 4,000' MSL then to 3,500' MSL for Initial. Remain within 4 DME if LSV on turn to final.

VFR STRAIGHT-IN RWY 3L/R

Depart CRAIG & descend to be at 3,000' MSL by Las Vegas Blvd. Do not descend below 3,000' MSL until within 5 DME of LSV or 4 NM of the runway on turn to final.

APPROACH RWY 21L/R

Cross STRYK at or above 9,500' MSL, proceed direct GASS PEAK. Cross JORDN at or above 9,500' MSL, cross GASS PEAK at or above 8,500' MSL. Cross APEX at or above 4,500' MSL then direct 5NM initial. Descend to cross PHINN at 4,000' MSL, Inside 5 NM descend to 3,500' MSL.

VFR STRAIGHT-IN RWY 21L/R

Cross APEX at 4,000' MSL. Descend to be at 3,000' MSL at PHINN. Descend to 3,000' MSL at LSV 027/5.

RANGE 63B EXIT

SOUTH: Via NIXON at or above 10,000' MSL, then direct STRYK.
EAST: Via SARAH at or above 10,000' MSL, then direct GASS PEAK.