

MISSION DATA CARD

OPORD		Callsign		Mission		Date/Time		
3583/2025		T-Rex 1		Training		272000JAN25		
Task	SAM Defense					Freq		
AO	GROOM LAKE					132.25		
Departure				Recovery				
DREAM FOUR				ARCOE				
#	Callsign		Pilot		IFF	TCN	LSR	NET
-1	T-Rex 1-1		Stoner		1511	1Y	1651	25/01
-2	T-Rex 1-2		Toolface		1512	64Y	1652	25/02
-3	T-Rex 1-3		addiks		1513	64X	1653	25/03
-4	T-Rex 1-4		Lenzi		1514	1X	1654	25/04

LOADOUT

A/A	A9M				GUN	100% CM	
A/G	2xA65D, 7M282L				CHF	240	
POD	TGP, A184L				FLR	240	
TKS					FUEL	85%	

TOLD

	Takeoff	Target	Joker	Bingo	Land		
FUEL	9423						

AIRBASES

	Name	TCN	ATIS	GND	TWR	RWY	Elev	ILS
Dep	Nellis AFB	12X	270.1	275.8	327.0	21L	1850	109.1
Arr	Nellis AFB	12X	270.1	275.8	327.0	21L	1850	109.1
Div	Creech AFB	87X	290.45	275.8	360.6			

FLIGHTPLAN

#	Name	Navaid/Coords/DME	ALT	TOT
1	JUNNO	BLD 346/44 (N36 43.800 W114 52.770)		
2	DREAM	LAS 354/66 BLD 342/71 (N37 10.340 W114 59.530)	17000	
3	Groom Lake	INS 339/42 (N37 16.500 W115 48)	14000	
4	SAM	INS 339/42 (N37 13.550 W115 47.410)		
5	ARCOE	LSV 357/30 (N36 44.260 W114 55.020)	15000	
6	APEX	LSV 027/09 (N36 21.580 W114 54.340)	4500	
7	Nellis	N36 14.680 W115 01.500		

COMMS

Radio	Usage
2	11-3-4-16-11-4-3
3	32.00

OTHER FLIGHTS

Callsign	Mission	Airframe	Freq	TCN	Grpld	Laser
Joker* 4	Training	1x F/A-18C	264.1	13/76		170X
AO	R74C	Task	Range 74C Laser Bombing			
Edelweiss 6	Training	2x F/A-18C	134.65	1/64	40	166X
AO	RANGE 64C	Task				
Nazgul 7	Training	4x F-15E	262.45	1/64		156X
AO		Task				

RADIO CHANNELS

#	Freq	Name
1		Flight/Squadron specific
2	289.4	Nellis Clearance Delivery
3	275.8	Nellis Ground
4	327.0	Nellis Tower
5	385.4	Nellis Approach/Departure West
6	273.55	Nellis Approach/Departure East
7	317.525	Nellis Control -- Sally
8	254.4	Nellis Control-- Lee
9	305.6	SOF Bullseye
10	343.725	EMERGENCY SINGLE FRQ
11	270.1	Nellis ATIS
12	360.625	Creech AFB Tower
13	250.1	HAVE QUICK 13
14	251.1	HAVE QUICK 14
15	252.1	HAVE QUICK 15
16	377.8	Blackjack
17	265.0	KC-135 AR-641A
18	360.8	KC-135MPRS AR-635
19	319.8	KC-135MPRS AR-625
20	300.05	KC-135 AR-231V

RAMROD

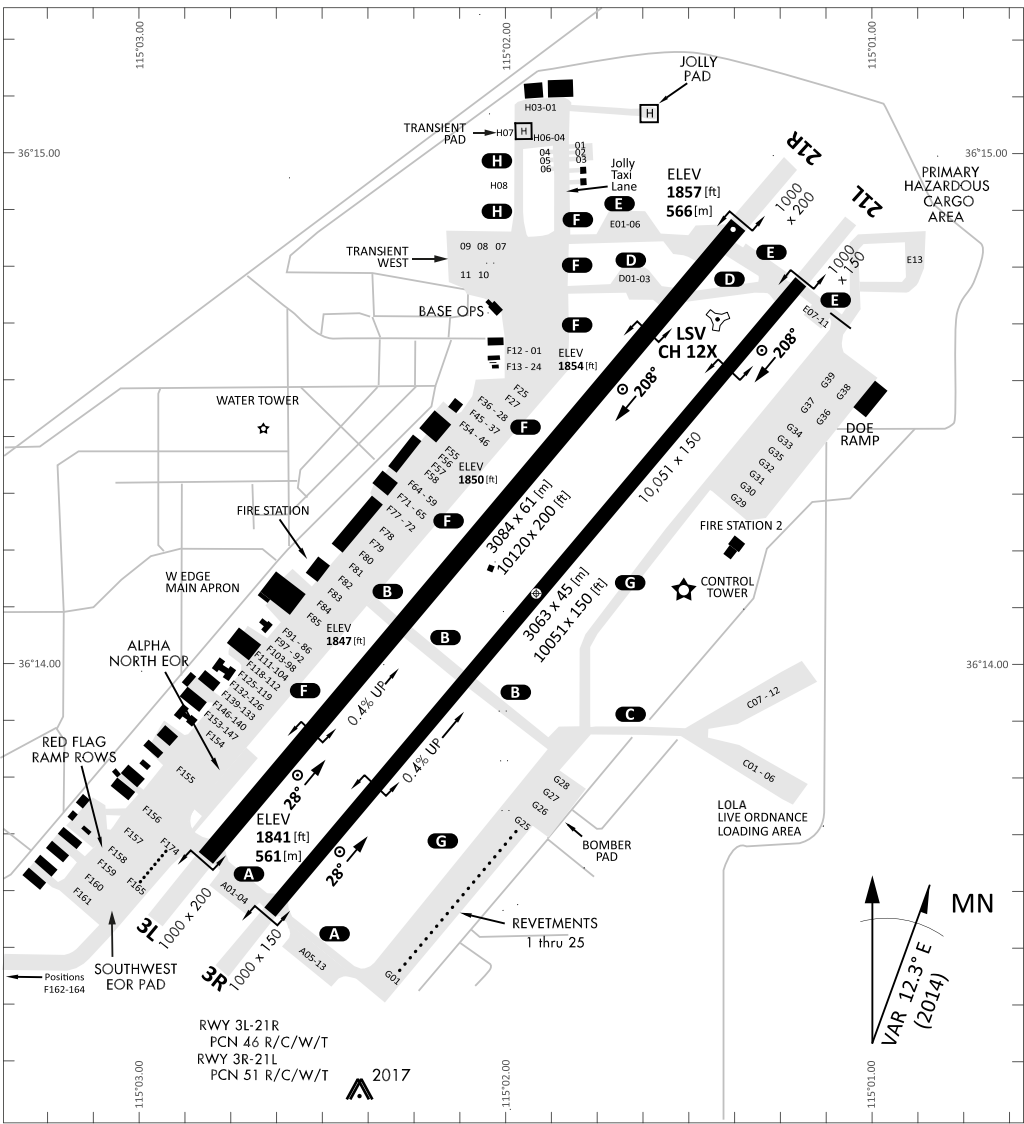
0	1	2	3	4	5	6	7	8	9
O	V	E	R	N	I	G	H	T	S

KTC 1400 C

	0	1	2	3	4	5	6	7	8	9
A	QWRM	ICB	YPO	JE	DN	FST	KH	AV	UL	GX
B	EFHW	NIL	VCX	RQ	AU	MBJ	OD	GT	KS	YP
C	WPDS	JYF	LGU	TX	ME	KHN	BA	IQ	OV	CR
D	KAXL	PHM	BFS	NG	YO	WCQ	DE	UR	TV	IJ
E	FGTJ	PLN	USH	DA	BW	IYO	EM	XV	QR	KC
F	MWFN	QXA	PKV	IH	UE	CBY	RS	GL	TO	JD
G	GAVN	OIQ	JSB	MT	YU	DKH	RC	WF	XP	EL
H	QDOS	JEU	AXF	CK	WP	LRY	NM	VH	IB	TG
I	QKAC	UJM	FPB	TW	EY	NRG	SD	OI	LX	VH
J	AEDL	JVB	RMG	QP	CK	UIF	NS	XO	WT	YH
K	BHAK	LOC	XUQ	FR	GM	EWP	DN	TV	SJ	YI
L	OEBR	KMF	QWG	CU	XA	NIJ	SL	TY	DP	VH
M	GXPO	MVE	WLN	RC	UB	HIY	SQ	TD	JF	AK
N	TXFJ	MNB	QOC	DL	AK	UVE	IS	GW	RY	PH
O	LPYV	KID	XWG	ME	ON	AJT	BS	UF	HQ	RC
P	PNFK	HXL	JSY	EM	AG	DQC	UV	TR	IW	BO
Q	RIAW	KFY	LTE	MN	OQ	XUV	GJ	SP	DB	CH
R	HRKM	POF	IEV	XS	TB	GUL	DW	NQ	YA	JC
S	TKHU	BRD	QFA	LS	GE	PWO	CN	JM	XI	VY
T	BOVR	AHU	SGD	FI	KN	PEJ	QY	LC	XM	WT
U	XHEA	YFR	OTK	DM	UC	WBJ	NP	VI	SL	GQ
V	CLBW	PVE	YSG	DK	HN	MOU	IT	JA	QX	FR
W	GPYW	VIQ	BAC	HS	RL	FEX	UJ	DT	KN	OM
X	AHFS	WPO	UNL	TM	IJ	DQE	GK	RV	BC	YX
Y	WCBM	NYJ	HRI	VS	QA	LXF	EG	TU	PO	KD

NAVAIDS

Id	Name	Channel	Position	Elevation
BCE	Bryce Canyon	75	N3741.35 W11218.23	9040
BIH	Bishop	33	N3722.62 W11821.99	4114
BLD	Boulder	114	N3559.75 W11451.82	3650
BTY	Beatty	94	N3648.54 W11644.86	2925
CDC	Cedar City	120	N3747.24 W11304.90	5463
DAG	Daggett	79	N3457.75 W11634.69	1760
EED	Needles	99	N3445.96 W11428.43	650
GFS	Goffs	91	N3507.87 W11510.59	4019
GRL	Groom Lake	18	N3713.91 W11548.16	4475
HEC	Hector	74	N3447.83 W11627.78	1854
ILC	Wilson Creek	110	N3815.02 W11423.65	9318
INS	Creech AFB	87	N3635.20 W11540.12	3101
LAS	McCarran Intl	116	N3604.78 W11509.59	2142
LSV	Nellis	12	N3614.68 W11501.50	1864
MLF	Milford	58	N3821.62 W11300.79	4977
MMM	Mormon Mesa	90	N3646.16 W11416.65	2120
MVA	Mina	98	N3833.92 W11801.97	7860
OAL	Coale Dale	124	N3800.20 W11746.23	4800
PGS	Peach Springs	57	N3537.48 W11332.67	4754
TPH	Tonopah Muni	119	N3801.84 W11702.01	5330
TQQ	Silverbow	77	N3748.00 W11647.00	5500
UTI	St George	23	N3705.29 W11335.53	2871



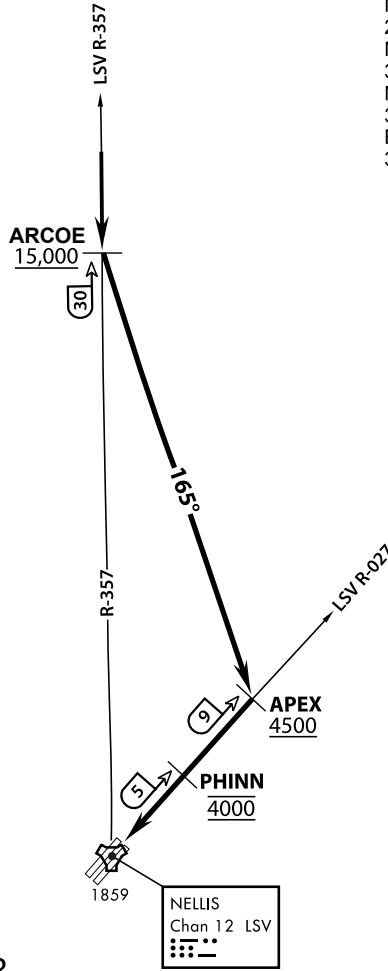
RWY 3L-21R
 PCN 46 R/C/W/T
 RWY 3R-21L
 PCN 51 R/C/W/T
 2017

PAR	RWY	CAT	MINIMA		ARP	ELEV	Scale 1:35'500	
	21L	A B D E	2057 - 0.8 200 (200-0.8/1.6)	GS 3°	36° 14.060° N 115° 01.058° W	1857 [ft] 566 [m]	0 300 600 900 1200 1500 [m]	
	3R	A B D E	2057 - 0.8 200 (200-0.8/1.6)	GS 3°			0 1000 2000 3000 4000 5000 [ft]	
SRA	21R	A C D E	2257 - 1.2 350 (350-1.2/1.6)					
	3L	A C D E	2257 - 1.2 350 (350-1.2/1.6)					

RWY	TORA	TODA	ASDA	LDA	PSN	THR	ALS
21L	10051 [ft] 3063 [m]	11051 [ft] 3368 [m]	11051 [ft] 3368 [m]	10051 [ft] 3063 [m]	36°14.043' N	115°01.018' W	⊕
3R	10120 [ft] 3084 [m]	11120 [ft] 3398 [m]	11120 [ft] 3398 [m]	10120 [ft] 3084 [m]	36°13.029' N	115°02.038' W	

ATIS	NELLIS GROUND	NELLIS TOWER	NELLIS CONTROL	TACAN	ILS RWY 21L	NELLIS EAST	NELLIS WEST
270.100 MHz	275.800 121.800	327.000 132.55	317.525	LSV 12X	109.10 Mhz	384.400	385.000

ATIS
 270.100
 NELLIS GROUND
 275.800
 NELLIS TOWER
 327.000
 NELLIS CONTROL
 317.525
 BLACKJACK
 377.800



VMC ONLY

PILOT RESPONSIBLE FOR
TERRAIN AVOIDANCE

APPROACH ROUTE DESCRIPTION

OVERHEAD

Cross ARCOE at or above 15,000 MSL, then heading 165° to APEX.
 Cross APEX at or above 4,500 MSL, report to tower.
 Cross PHINN (LSV 027/5) at 4,000 MSL then descend to 3,500 MSL for Initial.

VFR STRAIGHT IN RWY 21

Cross APEX at 4,000 feet MSL. Descend to be at 3,000 feet MSL at PHINN (LSV 027/5).



INDIAN SPRINGS, NEVADA

TACAN INS Chan 87	APCH CRS 065°	Rwy ldg TDZE 3133	9002 3113
		Arpt Elev 3113	

INDIAN SPRINGS AF AUX (KINS)

▼ * MISSED APPROACH: Straight ahead to INS TACAN, intercept INS R-outbound, cross 17 DME at or above 9500, then direkt KSV TACAN 114

NELLIS CON

CREECH AFB TOWER
118.30 60.60

GND CON

NOT FOR CIVIL USE

FOR USE UNDER BASIC VFR
WEATHER MINIMUMS ONLY

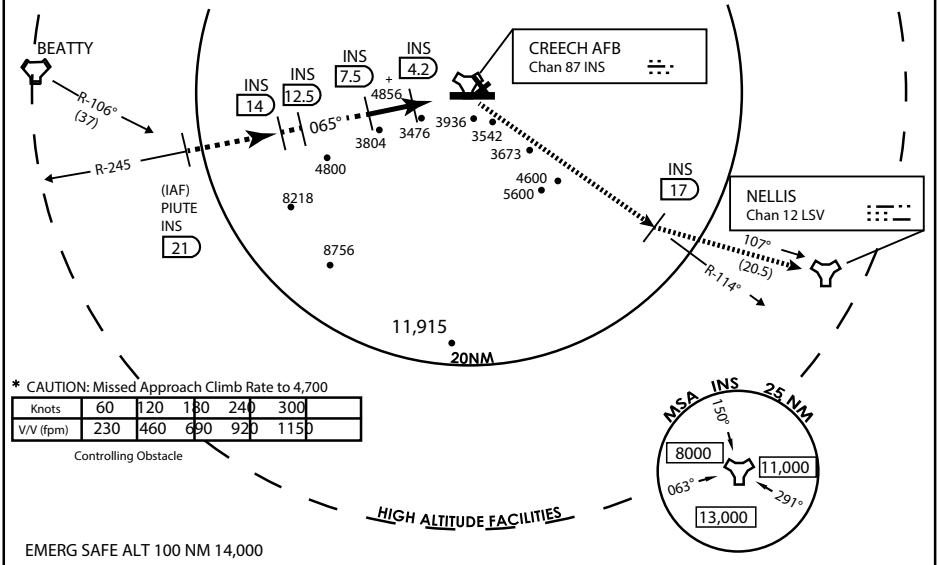
PILOT IS RESPONSIBLE FOR TERRAIN/OBSTACLE
AVOIDANCE AND
APPROPRIATE VFR CLOUD
CLEARANCE FOR ALL

CAUTION: Descent gradients are greater than allowed under standard TERPS criteria and inbound course does not meet straight-in criteria

CAUTION: Final approach course crosses Runway centerline at MIDFIELD. Maneuvering left of course required prior to landing. Do not Maneuver farther north than the INS R- 258

Modified by viaBog 66 for use with DCS
NOT FOR REAL LIFE NAVIGATION

Modified by viaBog 66 for use with DCS
NOT FOR REAL LIFE NAVIGATION



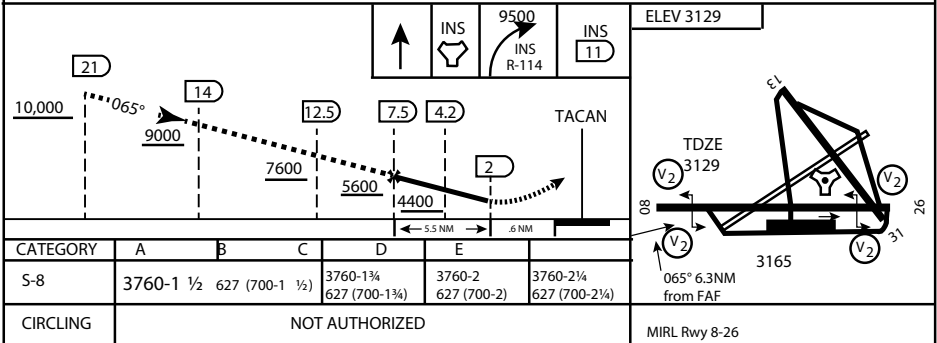
* CAUTION: Missed Approach Climb Rate to 4,700

Knots	60	120	180	240	300
V/V (fpm)	230	460	690	920	1150

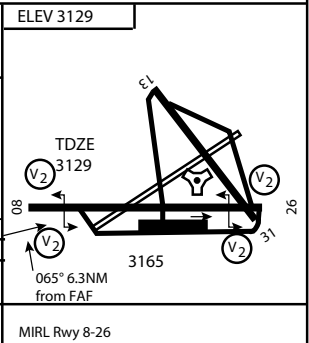
Controlling Obstacle

HIGH ALTITUDE FACILITIES

EMERG SAFE ALT 100 NM 14,000



CATEGORY	A	B	C	D	E
S-8	3760-1 1/2	627 (700-1 1/2)	3760-1 3/4 627 (700-1 3/4)	3760-2 627 (700-2)	3760-2 1/4 627 (700-2 1/4)
CIRCLING	NOT AUTHORIZED				



CITY OF INDIAN, NEVADA

INDIAN SPRINGS AF AUX (KINS)

(FOR DAY VFR USE ONLY)



AIRPORT DIAGRAM

476 VFG

CREECH AFB (KINS)
INDIAN SPRINGS, NEVADA

ATIS
122.5
CREECH TOWER
118.4 360.7 38.65
GND CON
118.3 275.8
CLNC DEL

115°42'W

FIELD
ELEV
3127

80

972 X 150

HOT
CARGO
PAD

78.9°

BAK-12

VAR 12.5° E

WEST
EOR

115°41'W

476 VFG JAN 2019

CONTROL
TOWER

BASE
OPS

RPA LOLA
WEST

RPA LOLA
EAST

LOLA /
HUNG
ORDNANCE

199 X 100
ELEV
3127

RUNWAY
31/13
MQ/RQ-1
ONLY

9002 X 150

258.5°

860 X 100

313.8°

4064 X 100

115°40'W

BAK-12

ELEV
3127

EAST
EOR

1030 X 150

26

476 VFG JAN 2019

AIRPORT DIAGRAM

INDIAN SPRINGS, NEVADA
CREECH AFB (KINS)