

**MISSION DATA CARD**

OPORD	Callsign	Mission	Date/Time			
3582/2025	Edelweiss 6	Training	272000JAN25			
Task						Freq
AO	RANGE 64C					134.65
Departure			Recovery			
FYTTR THREE			HI-TACAN Y RWY 21L			
#	Callsign	Pilot	IFF	TCN	LSR	NET
-1	Edelweiss 6-1	Cloud	1761	1Y	1661	40/01
-2	Edelweiss 6-2	Coach	1762	64Y	1662	40/02

**LOADOUT**

A/A	2xA9X, 2xA120C	GUN	100% HEI-T
A/G		CHF	60
POD		FLR	60
TKS	3xFPU-8A	FUEL	100%

**TOLD**

	Takeoff	Target	Joker	Bingo	Land
FUEL	17535			4000	

**AIRBASES**

	Name	TCN	ATIS	GND	TWR	RWY	Elev	ILS
Dep	Nellis AFB	12X	270.1	275.8	327.0	21L	1850	109.1
Arr	Nellis AFB	12X	270.1	275.8	327.0	21L	1850	109.1
Div	Creech AFB	87X	290.45	275.8	360.6			

**FLIGHTPLAN**

#	Name	Navaid/Coords/DME	ALT	TOT
1	Nellis	N36 14.680 W115 01.500	14000	
2	FYTTR	LSV 269/33 (N36 21.440 W115 41.470)	14000	
3	BTY	N36 48.035 W116 44.858	14000	
4	GFS	N35 07.868 W115 10.587	25000	
5	ARCOE	LSV 357/30 (N36 44.260 W114 55.020)	14000	

**COMMS**

Radio	Usage
1	3,4,16,4,3
2	265.35, 319.8

**SUPPORT****Tanker**

Callsign	TCN	Freq	ALT	TAS
ARCO 1	113Y	319.8	FL250	450
	Pos	AR-625: MVA 168/77 (N3717 W11802)		
SHELL 2	115Y	360.8	FL250	430
	Pos	AR-635: MLF 260/127 (N3831 W11542)		

**OTHER FLIGHTS**

Callsign	Mission	Airframe	Freq	TCN	Grpld	Laser
Joker* 4	Training	1x F/A-18C	264.1	13/76		170X
AO	R74C	Task	Range 74C Laser Bombing			
T-Rex 1	Training	4x A-10C	132.25	1/64	25	165X
AO	GROOM LAKE	Task	SAM Defense			
Nazgul 7	Training	4x F-15E	262.45	1/64		156X
AO		Task				

**RADIO CHANNELS**

#	Freq	Name
1		Flight/Squadron specific
2	289.4	Nellis Clearance Delivery
3	275.8	Nellis Ground
4	327.0	Nellis Tower
5	385.4	Nellis Approach/Departure West
6	273.55	Nellis Approach/Departure East
7	317.525	Nellis Control -- Sally
8	254.4	Nellis Control-- Lee
9	305.6	SOF Bullseye
10	343.725	EMERGENCY SINGLE FRQ
11	270.1	Nellis ATIS
12	360.625	Creech AFB Tower
13	250.1	HAVE QUICK 13
14	251.1	HAVE QUICK 14
15	252.1	HAVE QUICK 15
16	377.8	Blackjack
17	265.0	KC-135 AR-641A
18	360.8	KC-135MPRS AR-635
19	319.8	KC-135MPRS AR-625
20	300.05	KC-135 AR-231V

**RAMROD**

0	1	2	3	4	5	6	7	8	9
O	V	E	R	N	I	G	H	T	S

**KTC 1400 C**

	0	1	2	3	4	5	6	7	8	9
A	QWRM	ICB	YPO	JE	DN	FST	KH	AV	UL	GX
B	EFHW	NIL	VCX	RQ	AU	MBJ	OD	GT	KS	YP
C	WPDS	JYF	LGU	TX	ME	KHN	BA	IQ	OV	CR
D	KAXL	PHM	BFS	NG	YO	WCQ	DE	UR	TV	IJ
E	FGTJ	PLN	USH	DA	BW	IYO	EM	XV	QR	KC
F	MWFN	QXA	PKV	IH	UE	CBY	RS	GL	TO	JD
G	GAVN	OIQ	JSB	MT	YU	DKH	RC	WF	XP	EL
H	QDOS	JEU	AXF	CK	WP	LRY	NM	VH	IB	TG
I	QKAC	UJM	FPB	TW	EY	NRG	SD	OI	LX	VH
J	AEDL	JVB	RMG	QP	CK	UIF	NS	XO	WT	YH
K	BHAK	LOC	XUQ	FR	GM	EWP	DN	TV	SJ	YI
L	OEBR	KMF	QWG	CU	XA	NIJ	SL	TY	DP	VH
M	GXPO	MVE	WLN	RC	UB	HIY	SQ	TD	JF	AK
N	TXFJ	MNB	QOC	DL	AK	UVE	IS	GW	RY	PH
O	LPYV	KID	XWG	ME	ON	AJT	BS	UF	HQ	RC
P	PNFK	HXL	JSY	EM	AG	DQC	UV	TR	IW	BO
Q	RIAW	KFY	LTE	MN	OQ	XUV	GJ	SP	DB	CH
R	HRKM	POF	IEV	XS	TB	GUL	DW	NQ	YA	JC
S	TKHU	BRD	QFA	LS	GE	PWO	CN	JM	XI	VY
T	BOVR	AHU	SGD	FI	KN	PEJ	QY	LC	XM	WT
U	XHEA	YFR	OTK	DM	UC	WBJ	NP	VI	SL	GQ
V	CLBW	PVE	YSG	DK	HN	MOU	IT	JA	QX	FR
W	GPYW	VIQ	BAC	HS	RL	FEX	UJ	DT	KN	OM
X	AHFS	WPO	UNL	TM	IJ	DQE	GK	RV	BC	YX
Y	WCBM	NYJ	HRI	VS	QA	LXF	EG	TU	PO	KD

**NAVAIDS**

<b>Id</b>	<b>Name</b>	<b>Channel</b>	<b>Position</b>	<b>Elevation</b>
BCE	Bryce Canyon	75	N3741.35 W11218.23	9040
BIH	Bishop	33	N3722.62 W11821.99	4114
BLD	Boulder	114	N3559.75 W11451.82	3650
BTY	Beatty	94	N3648.54 W11644.86	2925
CDC	Cedar City	120	N3747.24 W11304.90	5463
DAG	Daggett	79	N3457.75 W11634.69	1760
EED	Needles	99	N3445.96 W11428.43	650
GFS	Goffs	91	N3507.87 W11510.59	4019
GRL	Groom Lake	18	N3713.91 W11548.16	4475
HEC	Hector	74	N3447.83 W11627.78	1854
ILC	Wilson Creek	110	N3815.02 W11423.65	9318
INS	Creech AFB	87	N3635.20 W11540.12	3101
LAS	McCarran Intl	116	N3604.78 W11509.59	2142
LSV	Nellis	12	N3614.68 W11501.50	1864
MLF	Milford	58	N3821.62 W11300.79	4977
MMM	Mormon Mesa	90	N3646.16 W11416.65	2120
MVA	Mina	98	N3833.92 W11801.97	7860
OAL	Coale Dale	124	N3800.20 W11746.23	4800
PGS	Peach Springs	57	N3537.48 W11332.67	4754
TPH	Tonopah Muni	119	N3801.84 W11702.01	5330
TQQ	Silverbow	77	N3748.00 W11647.00	5500
UTI	St George	23	N3705.29 W11335.53	2871



RWY 3L-21R  
 PCN 46 R/C/W/T  
 RWY 3R-21L  
 PCN 51 R/C/W/T  
 2017

PAR	RWY	CAT	MINIMA		ARP	ELEV	Scale 1:35'500	
	21L	A B D E	2057 - 0.8 200	(200-0.8/1.6) GS 3°	36° 14.060° N 115° 01.058° W	1857 [ft] 566 [m]	0	300
	3R	A B D E	2057 - 0.8 200	(200-0.8/1.6) GS 3°			600	900
	21R	A C D E	2257 - 1.2 350	(350-1.2/1.6)			1200	1500 [m]
	3L	A C D E	2257 - 1.2 350	(350-1.2/1.6)			0	1000
							2000	3000
							4000	5000 [ft]

RWY	TORA	TODA	ASDA	LDA	PSN	THR	ALS
21L	10051 [ft] 3063 [m]	11051 [ft] 3368 [m]	11051 [ft] 3368 [m]	10051 [ft] 3063 [m]	36°14.043' N	115°01.018' W	⊕
3R	10120 [ft] 3084 [m]	11120 [ft] 3398 [m]	11120 [ft] 3398 [m]	10120 [ft] 3084 [m]	36°13.029' N	115°02.038' W	

ATIS	NELLIS GROUND	NELLIS TOWER	NELLIS CONTROL	TACAN	ILS RWY 21L	NELLIS EAST	NELLIS WEST
270.100 MHz	275.800   121.800	327.000   132.55	317.525	LSV 12X	109.10 Mhz	384.400	385.000



**FYTTR THREE DEPARTURE** IFR CHART | VALID 2014 LAS VEGAS, NEVADA

ATIS  
270.100  
NELLIS GROUND  
275.800  
NELLIS TOWER  
327.000  
NELLIS CONTROL  
317.525  
NELLIS DEP/APP EAST  
384.400  
BLACKJACK  
377.800



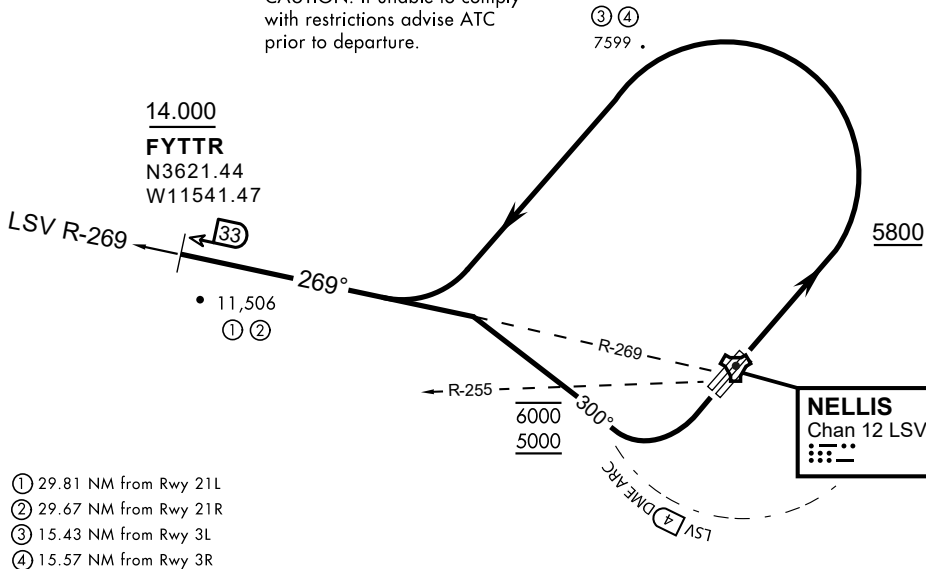
Rwy	Knots	60	120	180	240	300	360
3L (a)	V/V(fpm)	394	788	1182	1576	1970	2364
3R (a)	V/V(fpm)	392	784	1176	1568	1960	2352
21L (b)	V/V(fpm)	388	776	1164	1552	1940	2328
21R (b)	V/V(fpm)	390	780	1170	1560	1950	2340

Minimum Climb Rate

(a) to 9300

(b) to 13 500

CAUTION: If unable to comply with restrictions advise ATC prior to departure.



- ① 29.81 NM from Rwy 21L
- ② 29.67 NM from Rwy 21R
- ③ 15.43 NM from Rwy 3L
- ④ 15.57 NM from Rwy 3R

**DEPARTURE ROUTE DESCRIPTION**

TAKEOFF RWY 3L/R

- Fly runway heading until reaching 5,800'.
- Then climbing left turn to intercept LSV TACAN R-269 outbound.
- Cross FYTTR at or above 14,000' or as assigned, then via assigned route.

TAKEOFF RWY 21L/21R

- Turn right to intercept LSV TACAN R-269 outbound.
- Remain within LSV 4 DME until joining LSV R-269
- Cross R-255 between 5,000' and 6,000'.
- Cross FYTTR at or above 14,000' or as assigned, then via assigned route.

**NOISE ABATEMENT PROCEDURES:**

Fly according Nellis Noise Abatement instructions as published

# HI-TACAN Y RWY 21L

TACAN LSV Chan 12	APCH CRS 210°	Rwy ldg 21L TDZE 10,051 1865 Arprt Elev 1869	Rwy ldg 21R TDZE 10,120 1869
-------------------	---------------	---	------------------------------

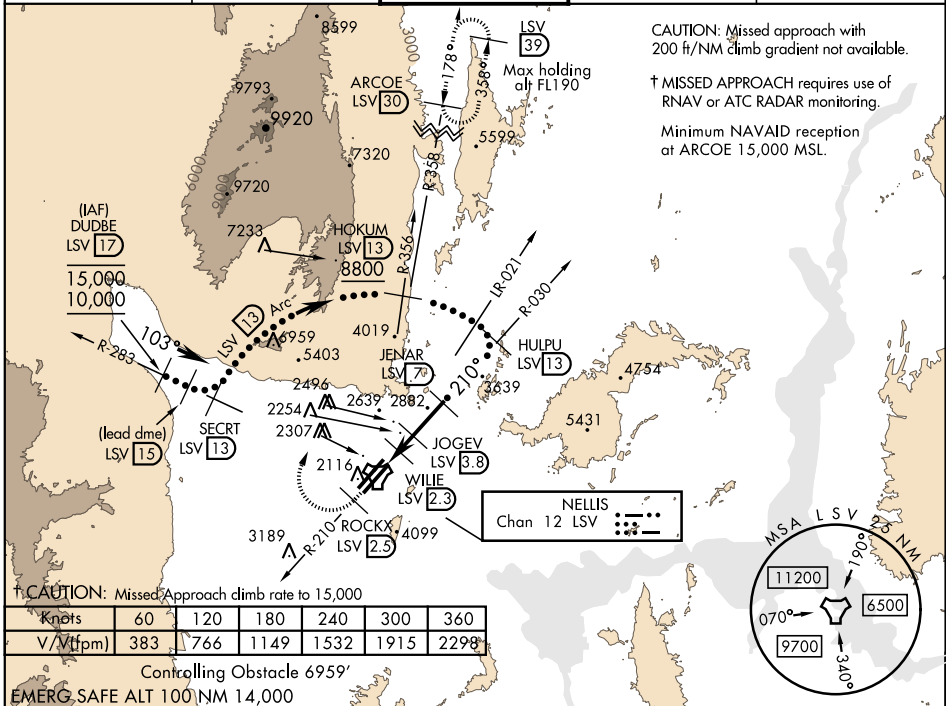
JAL-227 [USAF] NELLIS AFB (KLSV)

\* When ALS inop, increase CAT CDE vis to 1 3/4 miles.  
 \*\* Circling not authorized E of Rwy 3R-21L.



† MISSED APPROACH: Climb to 15,000, intercept LSV TACAN R-210 to 2.5 DME (ROCKX), then climbing right turn heading 020° to join LSV R-358 to ARCOE and hold, continue climb in hold to 15,000. Missed approach not for civil use.

ATIS 270.1	NELLIS APP CON 124.95 273.55	NELLIS TOWER 132.55 327.0	GND CON 121.8 275.8	CLNC DEL 120.9 289.4
------------	------------------------------	---------------------------	---------------------	----------------------

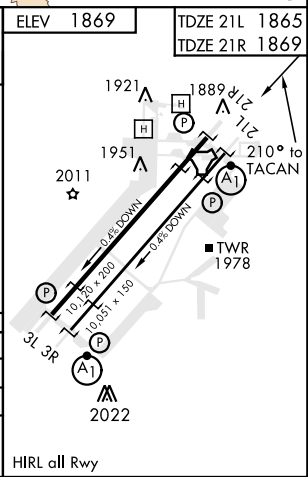
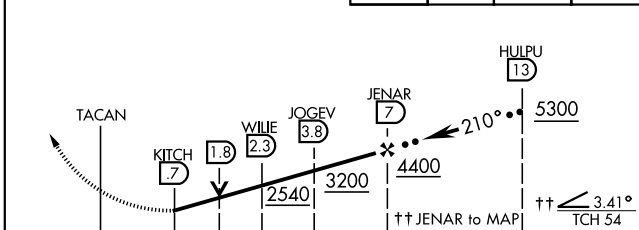


† CAUTION: Missed Approach climb rate to 15,000

Knots	60	120	180	240	300	360
V/Vt (fpm)	383	766	1149	1532	1915	2298

Controlling Obstacle 6959'  
EMERG. SAFE ALT 100 NM 14,000

VGSJ and descent angles not coincident (VGSJ angle 3.00/TCH 54).	15,000 LSV R-210	ROCKX LSV 2.5	hdg 020°	ARCOE R-358 30	ELEV 1869	TDZE 21L 1865	TDZE 21R 1869
--	------------------	---------------	----------	----------------	-----------	---------------	---------------



CATEGORY	C	D	E
S-21L *	2460-1 1/4	595 (600-1 1/4)	
SIDESTEP 21R	2460-1	591 (600-1)	
CIRCLING **	2620-2 1/4 751 (800-2 1/4)	2840-3 971 (1000-3)	3040-3 1171 (1200-3)

# HI-TACAN Y RWY 21L

SW-4, 05 DEC 2019 to 02 JAN 2020

SW-4, 05 DEC 2019 to 02 JAN 2020



INDIAN SPRINGS, NEVADA

TACAN INS Chan 87	APCH CRS 294 °	Rwy Idg TDZE Arprt Elev	9002 3133 3113
----------------------	-------------------	-------------------------------	----------------------

INDIAN SPRINGS AF AUX (KINS)

**▽** \* MISSED APPROACH: Direct INS then outbound INS **t8:2#DME** climbing to 10,000.

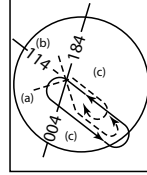
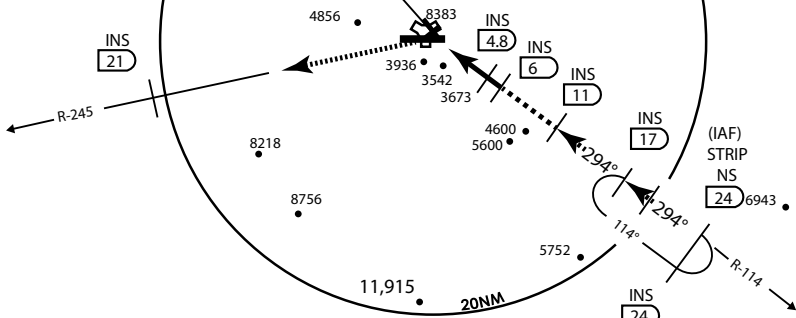
NELLIS CON -	INDIAN SPRINGS TOWER 118.30 <b>U</b> 60.60	GND CON -
-----------------	---	--------------

**NOT FOR CIVIL USE**

5975 •

**CAUTION:** Final approach course does not cross Runway centerline prior to threshold. Maneuvering right of course required prior to landing.

CREECH AFB  
Chan 87 INS



Modified by vJaBoG 66 for use with DCS

Modified by vJaBoG 66 for use with DCS

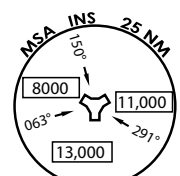
NOT FOR REAL LIFE NAVIGATION

NOT FOR REAL LIFE NAVIGATION

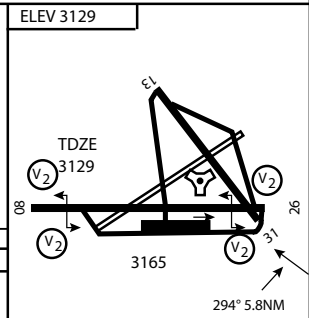
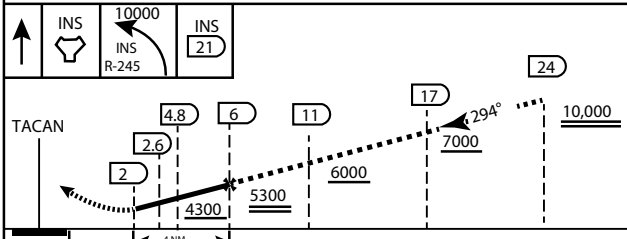
\* CAUTION: Missed Approach Climb Rate to 4,700

Knots	60	120	180	240	300	360
V/V (fpm)	450	900	1350	1800	2250	2700

Controlling Obstacle 3936



EMERG SAFE ALT 100 NM 14,000



CATEGORY	A	B	C	D	E
S-26	3800-2 ¼	697 (700 2 ½)			3800-2 ¼ 697 (700-2 ½)
CIRCLING	NOT AUTHORIZED				

MIRL Rwy 8-26 **0**

CITY OF INDIAN, NEVADA

INDIAN SPRINGS AF AUX (KINS)



# AIRPORT DIAGRAM

476 VFG

CREECH AFB (KINS)  
INDIAN SPRINGS, NEVADA

ATIS  
 122.5  
 CREECH TOWER  
 118.4 360.7 38.65  
 GND CON  
 118.3 275.8  
 CLNC DEL

115°42'W

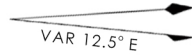
FIELD  
 ELEV  
 3127

80

972 X 150

HOT CARGO PAD

BAK-12

  
 VAR 12.5° E

WEST EOR

115°41'W

476 VFG JAN 2019

476 VFG JAN 2019

CONTROL TOWER  
 BASE OPS

RPA LOLA WEST

RPA LOLA EAST

LOLA / HUNG ORDNANCE

199 X 100  
 ELEV 3127  
 RUNWAY 31/13  
 MQ/RQ-1 ONLY

9002 X 150

258.5°

860 X 100

313.8°

4064 X 100

115°40'W

BAK-12

ELEV 3127

EAST EOR

1030 X 150

26

# AIRPORT DIAGRAM

INDIAN SPRINGS, NEVADA  
CREECH AFB (KINS)