

**MISSION DATA CARD**

OPORD		Callsign		Mission		Date/Time		
3579/2025		Edelweiss 6		Training		261400JAN25		
Task						Freq		
AO	RANGE 64C					134.65		
Departure				Recovery				
FYTTR LOW				HI-TACAN Y RWY 21L				
#	Callsign		Pilot		IFF	TCN	LSR	NET
-1	Edelweiss 6-1		Cloud		1761	1Y	1661	40/01
-2	Edelweiss 6-2		Kosmos		1762	64Y	1662	40/02

**LOADOUT**

A/A	2xA9X, 2xA120C					GUN	100% HEI-T
A/G	4xM82					CHF	60
POD						FLR	60
TKS	3xFPU-8A					FUEL	100%

**TOLD**

	Takeoff	Target	Joker	Bingo	Land
FUEL	17535			4000	

**AIRBASES**

	Name	TCN	ATIS	GND	TWR	RWY	Elev	ILS
Dep	Nellis AFB	12X	270.1	275.8	327.0	21L	1850	109.1
Arr	Nellis AFB	12X	270.1	275.8	327.0	21L	1850	109.1
Div	Creech AFB	87X	290.45	275.8	360.6			

**FLIGHTPLAN**

#	Name	Navaid/Coords/DME	ALT	TOT
1	Nellis	N36 14.680 W115 01.500	14000	
2	FYTTR	LSV 269/33 (N36 21.440 W115 41.470)	14000	
3	Range 64C	N36 39.684 W115 42.200	14000	
4	Groom Lake	INS 339/42 (N37 16.500 W115 48)	24000	
5	Tonopah Airport	N38 03.545 W117 05.088	24000	

**COMMS**

Radio	Usage
1	3,4,16,4,3
2	265.35, 319.8

**SUPPORT****Tanker**

Callsign	TCN	Freq	ALT	TAS
ARCO 1	113Y	319.8	FL250	450
	Pos	AR-625: MVA 168/77 (N3717 W11802)		
SHELL 2	115Y	360.8	FL250	430
	Pos	AR-635: MLF 260/127 (N3831 W11542)		

**RADIO CHANNELS**

#	Freq	Name
1		Flight/Squadron specific
2	289.4	Nellis Clearance Delivery
3	275.8	Nellis Ground
4	327.0	Nellis Tower
5	385.4	Nellis Approach/Departure West
6	273.55	Nellis Approach/Departure East
7	317.525	Nellis Control -- Sally
8	254.4	Nellis Control-- Lee
9	305.6	SOF Bullseye
10	343.725	EMERGENCY SINGLE FRQ
11	270.1	Nellis ATIS
12	360.625	Creech AFB Tower
13	250.1	HAVE QUICK 13
14	251.1	HAVE QUICK 14
15	252.1	HAVE QUICK 15
16	377.8	Blackjack
17	265.0	KC-135 AR-641A
18	360.8	KC-135MPRS AR-635
19	319.8	KC-135MPRS AR-625
20	300.05	KC-135 AR-231V

**RAMROD**

0	1	2	3	4	5	6	7	8	9
M	O	N	A	R	C	H	I	E	S

**KTC 1400 C**

	0	1	2	3	4	5	6	7	8	9
A	GMBU	RCJ	PNV	OW	HE	KDF	AL	TX	SY	QI
B	ERMC	FQD	UWA	YL	KH	IGB	OJ	PN	TS	XV
C	IVAD	SHN	EKG	MO	LP	CUY	TW	RF	BX	JQ
D	VABR	GHO	TJL	MU	EP	IDX	SK	YQ	FC	WN
E	HYIW	QTU	BCJ	OF	GL	XNP	EM	VA	KS	RD
F	JRWG	DVQ	SOX	BY	TP	HLK	UI	CA	MN	EF
G	QH NJ	KGC	PMS	IX	FE	UYW	TR	AB	VD	LO
H	SCIN	YDF	RBP	TL	GA	XHJ	WE	KQ	UV	OM
I	OYPU	QKX	MSF	IC	RH	GAV	DE	NW	JB	LT
J	KABU	XNP	TMD	SY	FQ	GLE	IV	OR	JC	HW
K	NTMC	KGS	EFX	YJ	PO	BAD	QH	UV	IL	WR
L	MUVY	PHC	WAT	ED	XG	SNL	IJ	RK	BO	FQ
M	NJDL	WIX	GRE	HM	BK	CPO	YA	FS	QU	VT
N	JYEN	MIX	COP	TB	FL	DSU	QW	AH	VR	GK
O	IEDX	BJP	RSU	FA	YT	VWL	KO	CN	QM	HG
P	CIOS	JTW	NHD	LK	EA	BMU	VF	XQ	PY	GR
Q	HBLJ	VUE	CRT	IX	FP	MWY	GK	QO	DN	SA
R	QUPJ	FEY	DHM	KV	WB	CGT	SN	AI	LX	OR
S	CHOW	TFM	XIS	ED	GB	AUV	JR	PN	KY	LQ
T	KIXA	RGD	OMP	TJ	VE	NYH	CW	SB	FL	UQ
U	HFPR	KOQ	YIN	BL	GX	JEV	TA	DW	MS	CU
V	TCKX	VQJ	BSL	AG	ON	MWY	FH	UD	ER	IP
W	ULTM	JXF	BGD	OA	RC	YPN	EH	WQ	SV	KI
X	OXAD	EPB	YFN	CV	WT	HIQ	SL	JK	MR	UG
Y	NXSP	JQB	RGV	WI	YL	HCK	MD	TA	FO	EU

**NAVAIDS**

<b>Id</b>	<b>Name</b>	<b>Channel</b>	<b>Position</b>	<b>Elevation</b>
BCE	Bryce Canyon	75	N3741.35 W11218.23	9040
BIH	Bishop	33	N3722.62 W11821.99	4114
BLD	Boulder	114	N3559.75 W11451.82	3650
BTY	Beatty	94	N3648.54 W11644.86	2925
CDC	Cedar City	120	N3747.24 W11304.90	5463
DAG	Daggett	79	N3457.75 W11634.69	1760
EED	Needles	99	N3445.96 W11428.43	650
GFS	Goffs	91	N3507.87 W11510.59	4019
GRL	Groom Lake	18	N3713.91 W11548.16	4475
HEC	Hector	74	N3447.83 W11627.78	1854
ILC	Wilson Creek	110	N3815.02 W11423.65	9318
INS	Creech AFB	87	N3635.20 W11540.12	3101
LAS	McCarran Intl	116	N3604.78 W11509.59	2142
LSV	Nellis	12	N3614.68 W11501.50	1864
MLF	Milford	58	N3821.62 W11300.79	4977
MMM	Mormon Mesa	90	N3646.16 W11416.65	2120
MVA	Mina	98	N3833.92 W11801.97	7860
OAL	Coale Dale	124	N3800.20 W11746.23	4800
PGS	Peach Springs	57	N3537.48 W11332.67	4754
TPH	Tonopah Muni	119	N3801.84 W11702.01	5330
TQQ	Silverbow	77	N3748.00 W11647.00	5500
UTI	St George	23	N3705.29 W11335.53	2871



RWY 3L-21R  
 PCN 46 R/C/W/T  
 RWY 3R-21L  
 PCN 51 R/C/W/T  
 2017

PAR	RWY	CAT	MINIMA		ARP	ELEV	Scale 1:35'500	
	21L	A B D E	2057 - 0.8 200	(200-0.8/1.6) GS 3°	36° 14.060° N 115° 01.058° W	1857 [ft] 566 [m]	0 300 600 900 1200 1500 [m]	
	3R	A B D E	2057 - 0.8 200	(200-0.8/1.6) GS 3°			0 1000 2000 3000 4000 5000 [ft]	
SRA	21R	A C D E	2257 - 1.2 350	(350-1.2/1.6)				
	3L	A C D E	2257 - 1.2 350	(350-1.2/1.6)				

RWY	TORA	TODA	ASDA	LDA	PSN	THR	ALS
21L	10051 [ft] 3063 [m]	11051 [ft] 3368 [m]	11051 [ft] 3368 [m]	10051 [ft] 3063 [m]	36°14.043' N	115°01.018' W	⊕
3R	10120 [ft] 3084 [m]	11120 [ft] 3398 [m]	11120 [ft] 3398 [m]	10120 [ft] 3084 [m]	36°13.029' N	115°02.038' W	

ATIS	NELLIS GROUND	NELLIS TOWER	NELLIS CONTROL	TACAN	ILS RWY 21L	NELLIS EAST	NELLIS WEST
270.100 MHz	275.800   121.800	327.000   132.55	317.525	LSV 12X	109.10 Mhz	384.400	385.000

# FYTTR LOW VISUAL OPERATION CHART | VALID 2014

ATIS  
270.100  
NELLIS GROUND  
275.800  
NELLIS TOWER  
327.000  
NELLIS CONTROL  
317.525  
NELLIS DEP/APP EAST  
384.400  
BLACKJACK  
377.800

CAUTION: If unable to comply with restrictions advise ATC prior to departure.



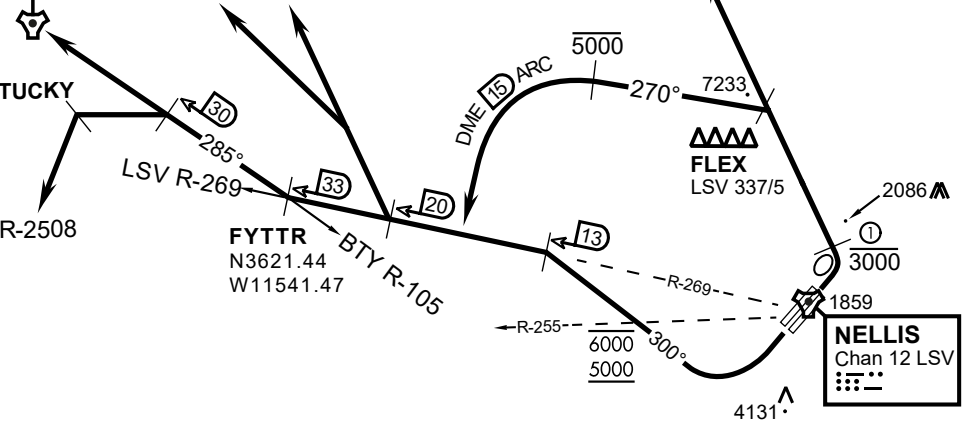
## VMC ONLY

### PILOT RESPONSIBLE FOR TERRAIN AVOIDANCE

① 4 NM from RWY 3L/R

**BEATTY**  
Chan 94 BTY

RANGE 64/65    RANGE 63



### DEPARTURE ROUTE DESCRIPTION

#### TAKEOFF RWY 3L/R:

- Remain below 3,000' MSL until north of Race Track and turned westbound.
- Turn left within 4NM of Nellis direct FLEX. Fly north of FLEX and turn left heading 270°.
- Intercept LSV R-255 DME ARC at or below 5,000' MSL.
- ARC south, intercept LSV R-269 outbound. Maintain VFR.

#### TAKEOFF RWY 21L/21R:

- Follow Noise Abatement Procedures.
- Fly runway heading until past Golf Course, turn right heading 300°.
- Cross LSV R-255 between 5,000' and 6,000' , intercept and proceed outbound on the LSV R-269.Recommend climb to 8,500' MSL or appropriate VFR altitude for overflight of North Las Vegas Training Area. Fly routing for appr. mission/transition.

#### TRANSITIONS:

- R-4806:** Turn right at the LSV 269/20 direct to assigned ranges.
- BEATTY:** Turn right at FYTTR direct BTY via the BTY R-105
- R-2508:** Turn right at the FYTTR, intercept the BTY 105/30, direct TUCKY, then direct R-2508

## FYTTR DEPARTURE AND TRANSITIONS (FYTTR LOW)



# HI-TACAN Y RWY 21L

TACAN LSV Chan 12	APCH CRS 210°	Rwy ldg 21L 10,051 TDZE 1865 Arprt Elev 1869	Rwy ldg 21R 10,120 TDZE 1869
-------------------	---------------	--	------------------------------

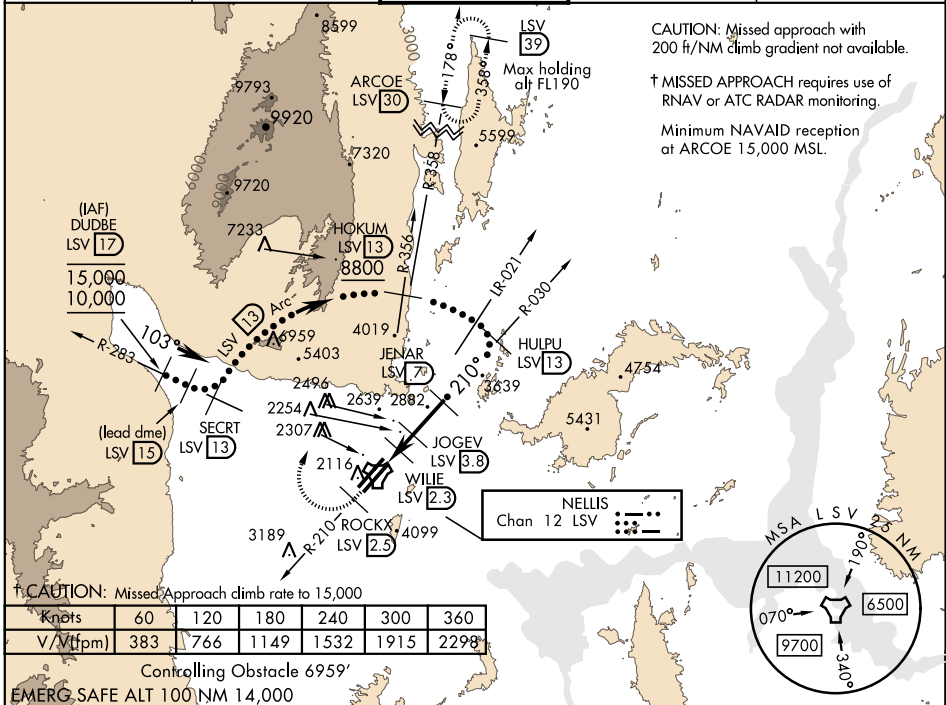
JAL-227 [USAF] NELLIS AFB (KLSV)

\* When ALS inop, increase CAT CDE vis to 1 3/4 miles.  
 \*\* Circling not authorized E of Rwy 3R-21L.



† MISSED APPROACH: Climb to 15,000, intercept LSV TACAN R-210 to 2.5 DME (ROCKX), then climbing right turn heading 020° to join LSV R-358 to ARCOE and hold, continue climb in hold to 15,000. Missed approach not for civil use.

ATIS 270.1	NELLIS APP CON 124.95 273.55	NELLIS TOWER 132.55 327.0	GND CON 121.8 275.8	CLNC DEL 120.9 289.4
------------	------------------------------	---------------------------	---------------------	----------------------



CAUTION: Missed approach with 200 ft/NM climb gradient not available.

† MISSED APPROACH requires use of RNAV or ATC RADAR monitoring.

Minimum NAVAID reception at ARCOE 15,000 MSL.

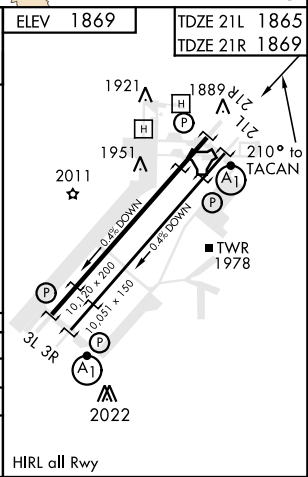
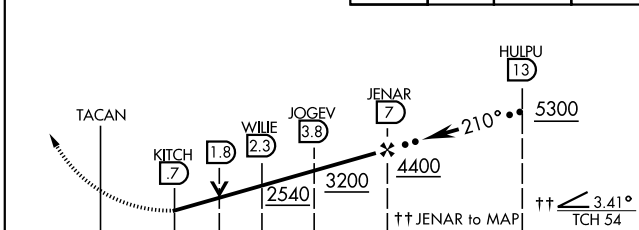
† CAUTION: Missed Approach climb rate to 15,000

Knots	60	120	180	240	300	360
V/Vt (fpm)	383	766	1149	1532	1915	2298

Controlling Obstacle 6959'

EMERG. SAFE ALT 100 NM 14,000

VGSJ and descent angles not coincident (VGSJ angle 3.00/TCH 54).	15,000 LSV R-210	ROCKX LSV 2.5	hdg 020°	ARCOE R-358 30	ELEV 1869	TDZE 21L 1865	TDZE 21R 1869
--	------------------	---------------	----------	----------------	-----------	---------------	---------------



CATEGORY	C	D	E
S-21L *	2460-1 1/4	595 (600-1 1/4)	
SIDESTEP 21R	2460-1	591 (600-1)	
CIRCLING **	2620-2 1/4 751 (800-2 1/4)	2840-3 971 (1000-3)	3040-3 1171 (1200-3)

HIRL all Rwy

# HI-TACAN Y RWY 21L

SW-4, 05 DEC 2019 to 02 JAN 2020

SW-4, 05 DEC 2019 to 02 JAN 2020



INDIAN SPRINGS, NEVADA

TACAN INS Chan 87	APCH CRS 294 °	Rwy Idg TDZE Arprt Elev	9002 3133 3113
----------------------	-------------------	-------------------------------	----------------------

INDIAN SPRINGS AF AUX (KINS)

**▽** \* MISSED APPROACH: Direct INS then outbound INS **t8:2#DME** climbing to 10,000.

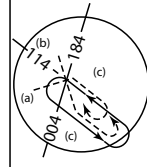
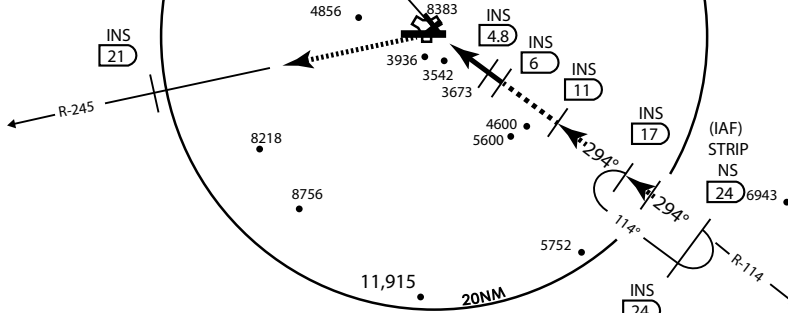
NELLIS CON -	INDIAN SPRINGS TOWER 118.30 <b>U</b> 60.60	GND CON -
-----------------	---	--------------

**NOT FOR CIVIL USE**

5975 •

**CAUTION:** Final approach course does not cross Runway centerline prior to threshold. Maneuvering right of course required prior to landing.

CREECH AFB  
Chan 87 INS



Modified by vJaBoG 66 for use with DCS

Modified by vJaBoG 66 for use with DCS

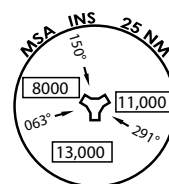
NOT FOR REAL LIFE NAVIGATION

NOT FOR REAL LIFE NAVIGATION

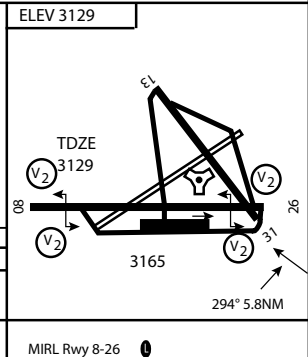
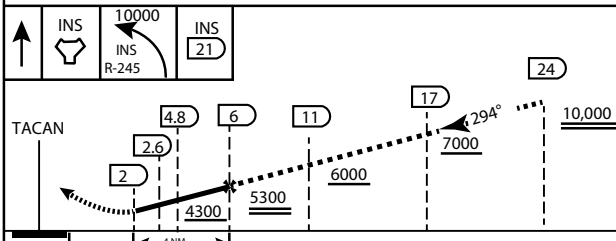
\* CAUTION: Missed Approach Climb Rate to 4,700

Knots	60	120	180	240	300	360
V/V (fpm)	450	900	1350	1800	2250	2700

Controlling Obstacle 3936



EMERG SAFE ALT 100 NM 14,000



CATEGORY	A	B	C	D	E
S-26	3800-2 ¼	697 (700 2 ½)			3800-2 ¼ 697 (700-2 ½)
CIRCLING	NOT AUTHORIZED				

MIRL Rwy 8-26 **0**

CITY OF INDIAN, NEVADA

INDIAN SPRINGS AF AUX (KINS)



# AIRPORT DIAGRAM

476 VFG

CREECH AFB (KINS)  
INDIAN SPRINGS, NEVADA

ATIS  
122.5  
CREECH TOWER  
118.4 360.7 38.65  
GND CON  
118.3 275.8  
CLNC DEL

FIELD  
ELEV  
3127

HOT  
CARGO  
PAD

VAR 12.5° E

BAK-12

WEST  
EOR

115°41'W

476 VFG JAN 2019

476 VFG JAN 2019

CONTROL  
TOWER  
BASE  
OPS

RPA LOLA  
WEST

RPA LOLA  
EAST

LOLA /  
HUNG  
ORDNANCE

199 X 100  
ELEV  
3127  
RUNWAY  
31/13  
MQ/RQ-1  
ONLY

9002 X 150  
258.5°  
860 X 100  
313.8°

4064 X 100  
133.8°

BAK-12  
ELEV  
3127

115°40'W

EAST  
EOR

1030 X 150  
26

# AIRPORT DIAGRAM

INDIAN SPRINGS, NEVADA  
CREECH AFB (KINS)