

**MISSION DATA CARD**

OPORD		Callsign		Mission		Date/Time		
3578/2025		Edelweiss 1		Training		241600JAN25		
Task	IFR & AAR					Freq		
AO						134.5		
Departure				Recovery				
DREAM FOUR				ILS or LOC/DME Z RWY 21L				
#	Callsign		Pilot		IFF	TCN	LSR	NET

**LOADOUT**

A/A	2xA120C, 2xA9X				GUN	100% HEI-T	
A/G					CHF	120	
POD					FLR	0	
TKS	3xFT300				FUEL	100%	

**TOLD**

	Takeoff	Target	Joker	Bingo	Land
FUEL	13172				

**AIRBASES**

	Name	TCN	ATIS	GND	TWR	RWY	Elev	ILS
Dep	Nellis AFB	12X	270.1	275.8	327.0	21L	1850	109.1
Arr	Nellis AFB	12X	270.1	275.8	327.0	21L	1850	109.1

**FLIGHTPLAN**

#	Name	Navaid/Coords/DME	ALT	TOT
1	1	N37 05 57.833 W115 59 59.370	15000	
2	2	N37 28 04.426 W115 59 59.370	15000	
3	3	N37 27 58.110 W115 35 03.158	15000	
4	4	N37 06 01.007 W115 35 03.158	15000	
5	Nellis AFB	N36 13 32 W115 02 37	1500	

**SUPPORT****Tanker**

Callsign	TCN	Freq	ALT	TAS
TEXACO 2	95Y	289.7	FL220	420
Pos	Pegasus.1: CDC 166/102 (N3730 W11440)			

**RADIO CHANNELS**

#	Freq	Name
1		Flight/Squadron specific
2	289.4	Nellis Clearance Delivery
3	275.8	Nellis Ground
4	327.0	Nellis Tower
5	385.4	Nellis Approach/Departure West
6	273.55	Nellis Approach/Departure East
7	317.525	Nellis Control -- Sally
8	254.4	Nellis Control-- Lee
9	305.6	SOF Bullseye
10	343.725	EMERGENCY SINGLE FRQ
11	270.1	Nellis ATIS
12	360.625	Creech AFB Tower
13	250.1	HAVE QUICK 13
14	251.1	HAVE QUICK 14
15	252.1	HAVE QUICK 15
16	377.8	Blackjack
17	265.0	KC-135 AR-641A
18	360.8	KC-135MPRS AR-635
19	319.8	KC-135MPRS AR-625
20	300.05	KC-135 AR-231V

**RAMROD**

0	1	2	3	4	5	6	7	8	9
P	A	L	I	N	D	R	O	M	E

**KTC 1400 C**

	0	1	2	3	4	5	6	7	8	9
A	STLB	NMO	YVA	KE	JP	CXU	FR	QG	IH	WD
B	ABKF	RUL	CSD	VH	XP	OQJ	EY	IW	TG	NM
C	PVOJ	ATW	BEG	YX	KS	RDQ	IN	UF	CM	HL
D	RABW	QJP	VSC	EI	MT	LOF	KH	DU	GY	NX
E	FNTL	VAH	RCO	YM	DG	BJE	US	KX	PW	QI
F	OQVI	ACR	LGX	YP	DW	BKU	MT	NE	FH	JS
G	CKLM	QHY	ORB	SD	XA	IWJ	NG	PF	EV	TU
H	BWJM	VRQ	GOC	PU	AK	XNF	SH	TI	LD	EY
I	DRNX	MCI	WQH	LV	AF	TSY	PJ	KB	UE	OG
J	UOCH	RKB	ATS	JE	PQ	WLX	MI	VY	FG	ND
K	ASYX	PWH	TVJ	LF	NE	DMG	QO	BK	RC	UI
L	SETM	UKC	FGQ	DI	NJ	ROX	WA	YH	VB	LP
M	CETW	XKN	LBD	HA	VJ	RMI	PS	QG	FO	YU
N	IMLE	PSH	QYK	BW	NU	TCR	JG	DF	AV	OX
O	JPXW	IEC	SUM	YV	FG	RDA	OQ	BH	NT	KL
P	MLTA	HBG	WEV	SI	UY	QFK	RC	DP	XO	NJ
Q	EMIN	ABO	KHP	DU	GL	FXS	QR	TV	WJ	CY
R	BJWX	OPK	ERF	VG	TI	MUD	NA	QY	CS	HL
S	BIHW	VYN	AOM	LP	XT	CQG	RF	JU	DK	ES
T	IGFY	EWB	SXQ	NL	KU	JMC	AV	RD	TO	BP
U	WSJM	ORX	KNG	BY	PQ	HDE	CF	UV	LT	IA
V	DMPH	KSB	YWL	AR	CT	IEJ	XU	OF	NV	QG
W	ERVP	GNS	BXK	WD	IA	TQU	YC	HO	MJ	FL
X	OLKS	RGQ	PHT	MN	JV	ADY	WC	FB	EI	UX
Y	QKCR	VTM	HIA	NB	FW	PGD	LE	YU	OX	JS

**NAVAIDS**

<b>Id</b>	<b>Name</b>	<b>Channel</b>	<b>Position</b>	<b>Elevation</b>
BCE	Bryce Canyon	75	N3741.35 W11218.23	9040
BIH	Bishop	33	N3722.62 W11821.99	4114
BLD	Boulder	114	N3559.75 W11451.82	3650
BTY	Beatty	94	N3648.54 W11644.86	2925
CDC	Cedar City	120	N3747.24 W11304.90	5463
DAG	Daggett	79	N3457.75 W11634.69	1760
EED	Needles	99	N3445.96 W11428.43	650
GFS	Goffs	91	N3507.87 W11510.59	4019
GRL	Groom Lake	18	N3713.91 W11548.16	4475
HEC	Hector	74	N3447.83 W11627.78	1854
ILC	Wilson Creek	110	N3815.02 W11423.65	9318
INS	Creech AFB	87	N3635.20 W11540.12	3101
LAS	McCarran Intl	116	N3604.78 W11509.59	2142
LSV	Nellis	12	N3614.68 W11501.50	1864
MLF	Milford	58	N3821.62 W11300.79	4977
MMM	Mormon Mesa	90	N3646.16 W11416.65	2120
MVA	Mina	98	N3833.92 W11801.97	7860
OAL	Coale Dale	124	N3800.20 W11746.23	4800
PGS	Peach Springs	57	N3537.48 W11332.67	4754
TPH	Tonopah Muni	119	N3801.84 W11702.01	5330
TQQ	Silverbow	77	N3748.00 W11647.00	5500
UTI	St George	23	N3705.29 W11335.53	2871



RWY 3L-21R  
 PCN 46 R/C/W/T  
 RWY 3R-21L  
 PCN 51 R/C/W/T  
 2017

PAR	RWY	CAT	MINIMA		ARP	ELEV	Scale 1:35'500	
	21L	A B D E	2057 - 0.8 200 (200-0.8/1.6)	GS 3°	36° 14.060° N 115° 01.058° W	1857 [ft] 566 [m]	0 300 600 900 1200 1500 [m]	
	3R	A B D E	2057 - 0.8 200 (200-0.8/1.6)	GS 3°			0 1000 2000 3000 4000 5000 [ft]	
SRA	21R	A C D E	2257 - 1.2 350 (350-1.2/1.6)					
	3L	A C D E	2257 - 1.2 350 (350-1.2/1.6)					

RWY	TORA	TODA	ASDA	LDA	PSN	THR	ALS
21L	10051 [ft] 3063 [m]	11051 [ft] 3368 [m]	11051 [ft] 3368 [m]	10051 [ft] 3063 [m]	36°14.043' N	115°01.018' W	⊕
3R	10120 [ft] 3084 [m]	11120 [ft] 3398 [m]	11120 [ft] 3398 [m]	10120 [ft] 3084 [m]	36°13.029' N	115°02.038' W	

ATIS	NELLIS GROUND	NELLIS TOWER	NELLIS CONTROL	TACAN	ILS RWY 21L	NELLIS EAST	NELLIS WEST
270.100 MHz	275.800   121.800	327.000   132.55	317.525	LSV 12X	109.10 Mhz	384.400	385.000

# DREAM FOUR DEPARTURE DREAM4 | VALID 2014 LAS VEGAS, NEVADA

**NELLIS AFB (KLSV)**

ATIS  
270.100  
NELLIS GROUND  
275.800  
NELLIS TOWER  
327.000  
NELLIS CONTROL  
317.525  
NELLIS DEP/APP EAST  
384.400  
BLACKJACK  
377.800

**DREAM**

N3710.34  
W11459.53

**MINTT**  
LAS 351/38  
17,000

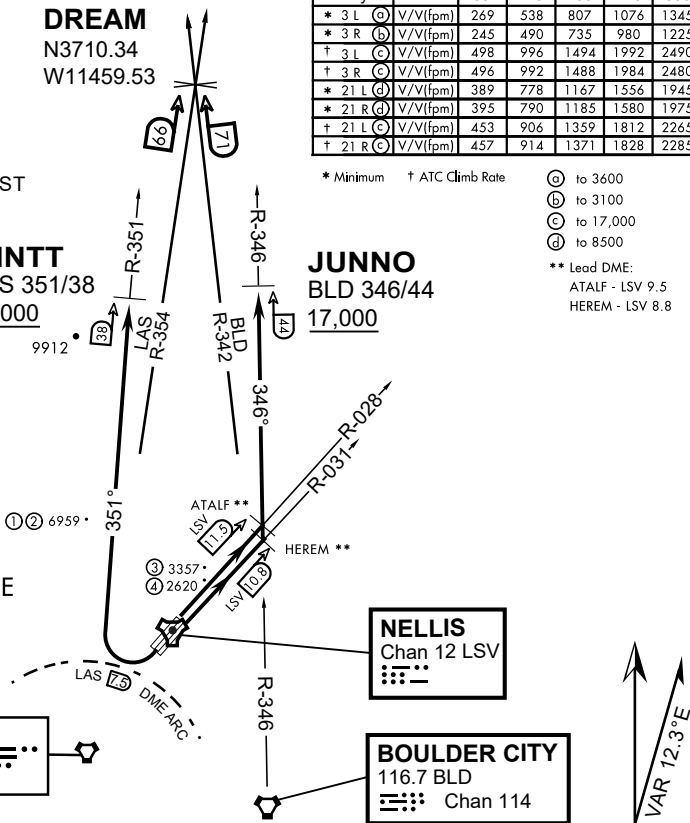
**JUNNO**  
BLD 346/44  
17,000

Rwy	Knots	60	120	180	240	300	360
* 3 L (A)	V/V(fpm)	269	538	807	1076	1345	1614
* 3 R (B)	V/V(fpm)	245	490	735	980	1225	1470
† 3 L (C)	V/V(fpm)	498	996	1494	1992	2490	2988
† 3 R (C)	V/V(fpm)	496	992	1488	1984	2480	2976
* 21 L (D)	V/V(fpm)	389	778	1167	1556	1945	2334
* 21 R (D)	V/V(fpm)	395	790	1185	1580	1975	2370
† 21 L (C)	V/V(fpm)	453	906	1359	1812	2265	2718
† 21 R (C)	V/V(fpm)	457	914	1371	1828	2285	2742

\* Minimum † ATC Climb Rate

- (A) to 3600
  - (B) to 3100
  - (C) to 17,000
  - (D) to 8500
- \*\* Lead DME:  
ATALF - LSV 9.5  
HEREM - LSV 8.8

- ① 12.24 NM from Rwy 21R
- ② 12.40 NM from Rwy 21L
- ③ 5.67 NM from Rwy 3L
- ④ 5.85 NM from Rwy 3R



**NOT FOR CIVIL USE**

CAUTION: If unable to comply with restrictions advise ATC prior to departure.

**DEPARTURE ROUTE DESCRIPTION**

**TAKE-OFF RWY 3L**

- Fly runway heading to intercept the LSV TACAN R-028 then direct ATALF, intercept the BLD VORTAC R-346 then direct JUNNO, cross JUNNO at or above 17,000, then via assigned route.

**TAKE-OFF RWY 3R**

- Fly runway heading to intercept the LSV TACAN R-031 then direct HEREM, intercept the BLD VORTAC R-346 then direct JUNNO, cross JUNNO at or above 17,000, then via assigned route.

**TAKE-OFF RWY 21L/R**

- Turn right to intercept LAS VORTAC R-351 outbound. Remain North of LAS 7.5 DME turning Northbound. Intercept LAS R-351 between 5000 and 6000, do not proceed West of LAS R-351. Cross MINTT at or above 17,000, then via assigned route.

NOISE ABATMENT PROCEDURES: Fly acc. Nellis Noise Abatement instructions

**DREAM FOUR DEPARTURE (DREAM4 • DREAM)**



# ILS or LOC/DME Z RWY 21L

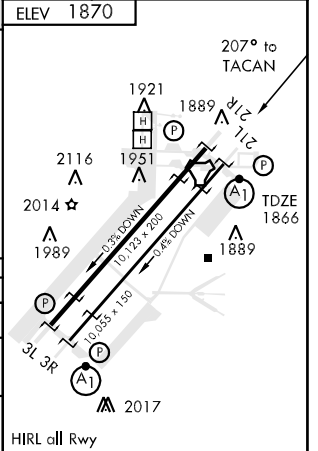
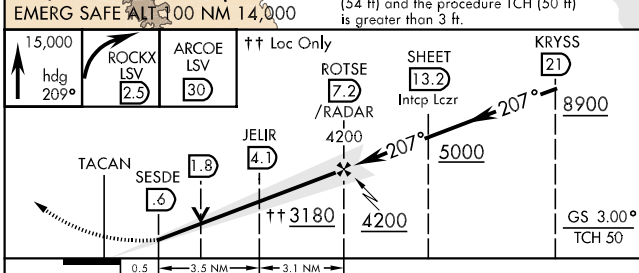
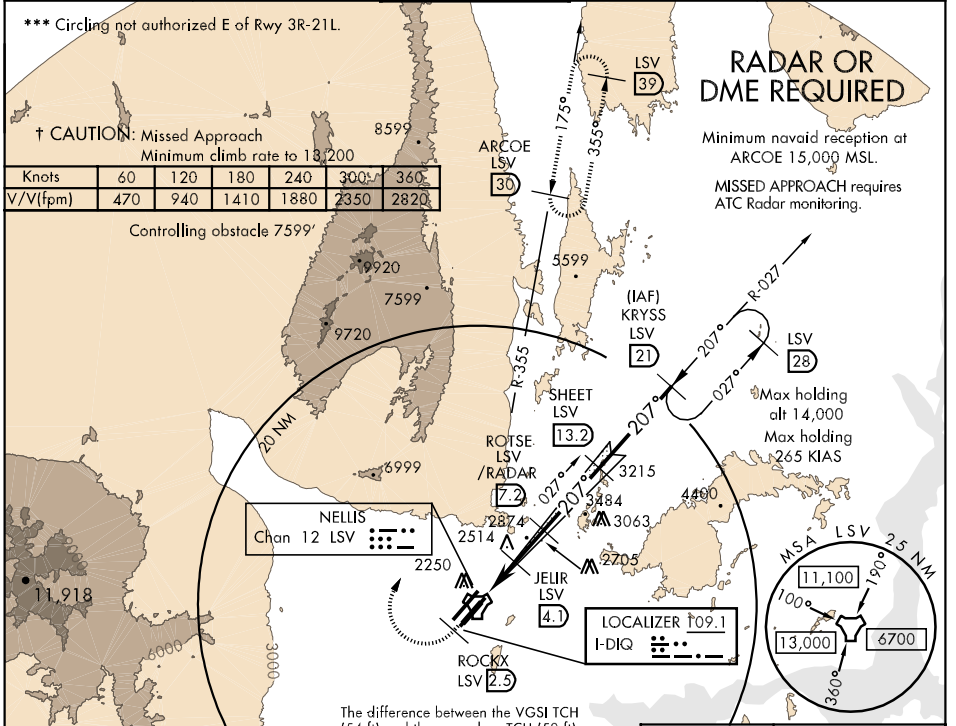
LOC I-DIQ <b>109.1</b>	APCH CRS <b>207°</b>	Rwy ldg <b>10,055</b> TDZE <b>1866</b> Arpt Elev <b>1870</b>
---------------------------	-------------------------	--

AL-227 [USAF]

NELLIS AFB (KLSV)

▼ \* When ALS inop, increase CAT ABCDE RVR to 40, vis to ¾ mile.  
 \*\* When ALS inop, increase CAT AB RVR to 50, vis to 1 mile, CAT C vis to 1½ miles, CAT D vis to 1¾ miles, CAT E vis to 2 miles.  
 † MISSED APPROACH: Climb to 15,000, heading 209° to 2.5 DME (ROCKX), then climbing right turn heading 020° to join LSV TACAN R-355 to ARCOE and hold, continue climb in hold to 15,000.

ATIS <b>270.1</b>	NELLIS APP CON <b>124.95 273.55</b>	NELLIS TOWER <b>132.55 327.0</b>	GND CON <b>121.8 275.8</b>	CLNC DEL <b>120.9 289.4</b>
----------------------	--	-------------------------------------	-------------------------------	--------------------------------



CATEGORY	A	B	C	D	E
S-ILS 21L *	2066/24		200	(200-½)	
S-LOC 21L **	2440/24 574 (600-½)	2440/50 574 (600-1)	2440/60 574 (600-1½)	2440-1½ 574 (600-1½)	
CIRCLING ***	2480-1 610 (700-1)	2680-1¼ 810 (900-1¼)	2680-2¼ 810 (900-2¼)	2680-2½ 810 (900-2½)	2940-3 1070 (1100-3)

# ILS or LOC/DME Z RWY 21L

SW-4, 23 SEP 2010 to 21 OCT 2010

SW-4, 23 SEP 2010 to 21 OCT 2010