

MISSION DATA CARD

OPORD		Callsign		Mission		Date/Time		
3577/2025		Edelweiss 1		Training		020000FEB25		
Task	Bomb Training					Freq		
AO	R64					134.5		
Departure				Recovery				
FYTTR LOW				ILS or LOC/DME Z RWY 21L				
#	Callsign		Pilot		IFF	TCN	LSR	NET
-1	Edelweiss 1-1		Hercules		1711	1Y	1621	

LOADOUT

A/A	2xA120C, 2xA9X				GUN	100% HEI-T	
A/G	6xM82				CHF	60	
POD					FLR	60	
TKS	2xFT300				FUEL	100%	

TOLD

	Takeoff	Target	Joker	Bingo	Land
FUEL	11169				

AIRBASES

	Name	TCN	ATIS	GND	TWR	RWY	Elev	ILS
Dep	Nellis AFB	12X	270.1	275.8	327.0	21L	1850	109.1
Arr	Nellis AFB	12X	270.1	275.8	327.0	21L	1850	109.1
Div	Creech AFB	87X	290.45	275.8	360.6			

FLIGHTPLAN

#	Name	Navaid/Coords/DME	ALT	TOT
1	FYTTR	N36 21 26.400 W115 41 28.200	15000	
2	HOLD	N36 46 07.300 W115 53 04.360	20000	
3	IP	N36 40 46.465 W115 53 03.980	20000	
4	R65 W Circle	N36 40 51.660 W115 40 27.180	3030	
5	SAFE	N36 45 59.212 W115 40 25.183	20000	
6	STRYK	N36 25 37.200 W115 30 42	15000	
7	GASS PEAK	N36 24 08.400 W115 10 39.600	10000	
8	APEX	N36 21 34.800 W114 54 20.400	5000	
9	Nellis AFB	N36 13 32 W115 02 37	3500	

SUPPORT**Tanker**

Callsign	TCN	Freq	ALT	TAS
ARCO 1	113Y	319.8	FL250	450
Pos	AR-625: MVA 168/77 (N3717 W11802)			

RADIO CHANNELS

#	Freq	Name
1		Flight/Squadron specific
2	289.4	Nellis Clearance Delivery
3	275.8	Nellis Ground
4	327.0	Nellis Tower
5	385.4	Nellis Approach/Departure West
6	273.55	Nellis Approach/Departure East
7	317.525	Nellis Control -- Sally
8	254.4	Nellis Control-- Lee
9	305.6	SOF Bullseye
10	343.725	EMERGENCY SINGLE FRQ
11	270.1	Nellis ATIS
12	360.625	Creech AFB Tower
13	250.1	HAVE QUICK 13
14	251.1	HAVE QUICK 14
15	252.1	HAVE QUICK 15
16	377.8	Blackjack
17	265.0	KC-135 AR-641A
18	360.8	KC-135MPRS AR-635
19	319.8	KC-135MPRS AR-625
20	300.05	KC-135 AR-231V

RAMROD

0	1	2	3	4	5	6	7	8	9
M	I	C	R	O	W	A	V	E	D

KTC 1400 C

	0	1	2	3	4	5	6	7	8	9
A	JYMC	RUN	SGE	BQ	TX	FDK	PO	IL	HW	VA
B	SGBV	DEW	YXJ	PN	AQ	LMU	IH	OR	CF	TK
C	MCBY	DIK	SFJ	VW	RT	NGO	HE	LQ	AP	XU
D	QSKN	OIR	GJB	DW	MY	HVT	PL	AC	UE	XF
E	MEGN	XPW	RKB	VH	OS	LCT	QI	UJ	YF	DA
F	MUST	ABX	CIY	PJ	WE	DKF	VL	HR	NG	QO
G	FRIE	VQA	NOX	BM	WY	HCT	UG	PK	JL	DS
H	GAXM	STY	JKN	QD	FE	UCV	WL	PB	IH	OR
I	NAWY	IUB	COX	GQ	EL	VTR	KJ	DF	HP	SM
J	AXLY	JWK	IHC	RS	TE	FUV	GB	PN	MQ	DO
K	YULX	JMP	EIS	CW	HO	RFV	BN	DT	GQ	AK
L	HUED	MPA	BCW	JT	LR	XSY	NK	VI	OF	QG
M	CEMN	XSP	IVW	QB	RG	LYD	UJ	OF	HA	TK
N	UACS	LNO	TYW	BH	MJ	VGX	DQ	KF	IP	ER
O	HBPE	WKM	RQN	SD	VI	OAT	UY	FC	JG	LX
P	WMKA	NFB	CEG	SQ	HU	XLV	IJ	TP	RO	YD
Q	DNSB	YQV	WAR	TJ	XC	LHO	UF	KG	EP	IM
R	IYUC	ATO	LVE	FH	KR	MXP	GW	JQ	SB	ND
S	UKYN	ADG	LEF	XC	RT	HJI	VW	MS	QO	PB
T	AEFX	CIV	DYT	WK	OM	PBN	SU	GR	LH	QJ
U	FUBR	LWT	AIM	NC	PQ	HJX	OK	SV	YE	DG
V	PKTI	JNL	AHQ	OV	XM	SBF	CY	GW	ER	UD
W	SXHD	MYI	JPN	LR	UC	GQK	TE	FW	OV	BA
X	PYLJ	SHC	TBI	DG	QN	XKE	UA	FO	RW	VM
Y	UPDB	WYI	TCQ	EJ	OV	FMA	LH	RG	KX	SN

NAVAIDS

Id	Name	Channel	Position	Elevation
BCE	Bryce Canyon	75	N3741.35 W11218.23	9040
BIH	Bishop	33	N3722.62 W11821.99	4114
BLD	Boulder	114	N3559.75 W11451.82	3650
BTY	Beatty	94	N3648.54 W11644.86	2925
CDC	Cedar City	120	N3747.24 W11304.90	5463
DAG	Daggett	79	N3457.75 W11634.69	1760
EED	Needles	99	N3445.96 W11428.43	650
GFS	Goffs	91	N3507.87 W11510.59	4019
GRL	Groom Lake	18	N3713.91 W11548.16	4475
HEC	Hector	74	N3447.83 W11627.78	1854
ILC	Wilson Creek	110	N3815.02 W11423.65	9318
INS	Creech AFB	87	N3635.20 W11540.12	3101
LAS	McCarran Intl	116	N3604.78 W11509.59	2142
LSV	Nellis	12	N3614.68 W11501.50	1864
MLF	Milford	58	N3821.62 W11300.79	4977
MMM	Mormon Mesa	90	N3646.16 W11416.65	2120
MVA	Mina	98	N3833.92 W11801.97	7860
OAL	Coale Dale	124	N3800.20 W11746.23	4800
PGS	Peach Springs	57	N3537.48 W11332.67	4754
TPH	Tonopah Muni	119	N3801.84 W11702.01	5330
TQQ	Silverbow	77	N3748.00 W11647.00	5500
UTI	St George	23	N3705.29 W11335.53	2871



RWY 3L-21R
 PCN 46 R/C/W/T
 RWY 3R-21L
 PCN 51 R/C/W/T
 2017

PAR	RWY	CAT	MINIMA		ARP	ELEV	Scale 1:35'500	
	21L	A B D E	2057 - 0.8 200	(200-0.8/1.6) GS 3°	36° 14.060° N 115° 01.058° W	1857 [ft] 566 [m]	0 300 600 900 1200 1500 [m]	
	3R	A B D E	2057 - 0.8 200	(200-0.8/1.6) GS 3°			0 1000 2000 3000 4000 5000 [ft]	
SRA	21R	A C D E	2257 - 1.2 350	(350-1.2/1.6)				
	3L	A C D E	2257 - 1.2 350	(350-1.2/1.6)				

RWY	TORA	TODA	ASDA	LDA	PSN	THR	ALS
21L	10051 [ft] 3063 [m]	11051 [ft] 3368 [m]	11051 [ft] 3368 [m]	10051 [ft] 3063 [m]	36°14.043' N	115°01.018' W	⊕
3R	10120 [ft] 3084 [m]	11120 [ft] 3398 [m]	11120 [ft] 3398 [m]	10120 [ft] 3084 [m]	36°13.029' N	115°02.038' W	

ATIS	NELLIS GROUND	NELLIS TOWER	NELLIS CONTROL	TACAN	ILS RWY 21L	NELLIS EAST	NELLIS WEST
270.100 MHz	275.800 121.800	327.000 132.55	317.525	LSV 12X	109.10 Mhz	384.400	385.000

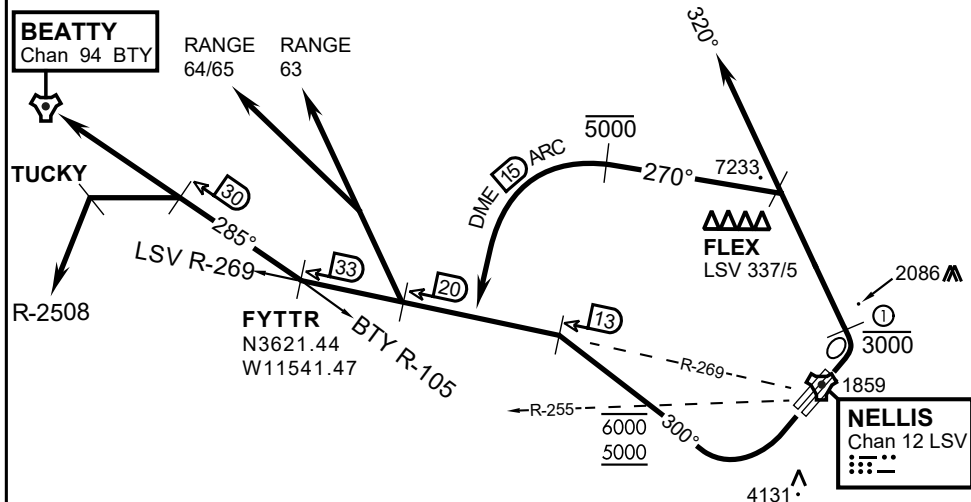
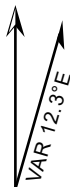
ATIS
270.100
NELLIS GROUND
275.800
NELLIS TOWER
327.000
NELLIS CONTROL
317.525
NELLIS DEP/APP EAST
384.400
BLACKJACK
377.800

CAUTION: If unable to comply
with restrictions advise ATC
prior to departure.

VMC ONLY

PILOT RESPONSIBLE FOR TERRAIN AVOIDANCE

① 4 NM from RWY 3L/R



DEPARTURE ROUTE DESCRIPTION

TAKEOFF RWY 3L/R:

- Remain below 3,000' MSL until north of Race Track and turned westbound.
- Turn left within 4NM of Nellis direct FLEX. Fly north of FLEX and turn left heading 270°.
- Intercept LSV 15 DME ARC at or below 5,000' MSL.
- ARC south, intercept LSV R-269 outbound. Maintain VFR.

TAKEOFF RWY 21L/21R:

- Follow Noise Abatement Procedures.
- Fly runway heading until past Golf Course, turn right heading 300°.
- Cross LSV R-255 between 5,000' and 6,000' , intercept and proceed outbound on the LSV R-269. Recommend climb to 8,500' MSL or appropriate VFR altitude for overflight of North Las Vegas Training Area. Fly routing for appr. mission/transition.

TRANSITIONS:

R-4806: Turn right at the LSV 269/20 direct to assigned ranges.

BEATTY: Turn right at FYTTR direct BTY via the BTY R-105

R-2508: Turn right at the FYTTR, intercept the BTY 105/30, direct TUCKY, then direct R-2508

FYTTR DEPARTURE AND TRANSITIONS (FYTTR LOW)

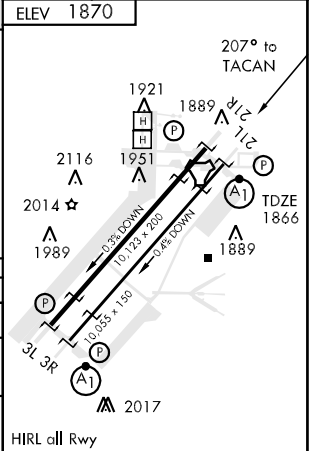
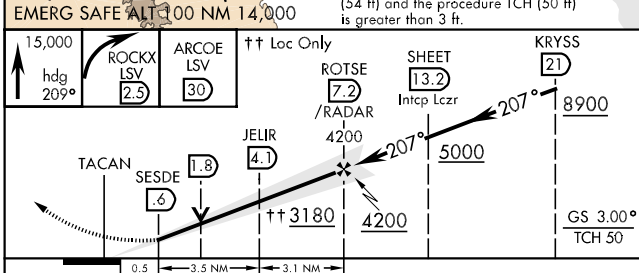
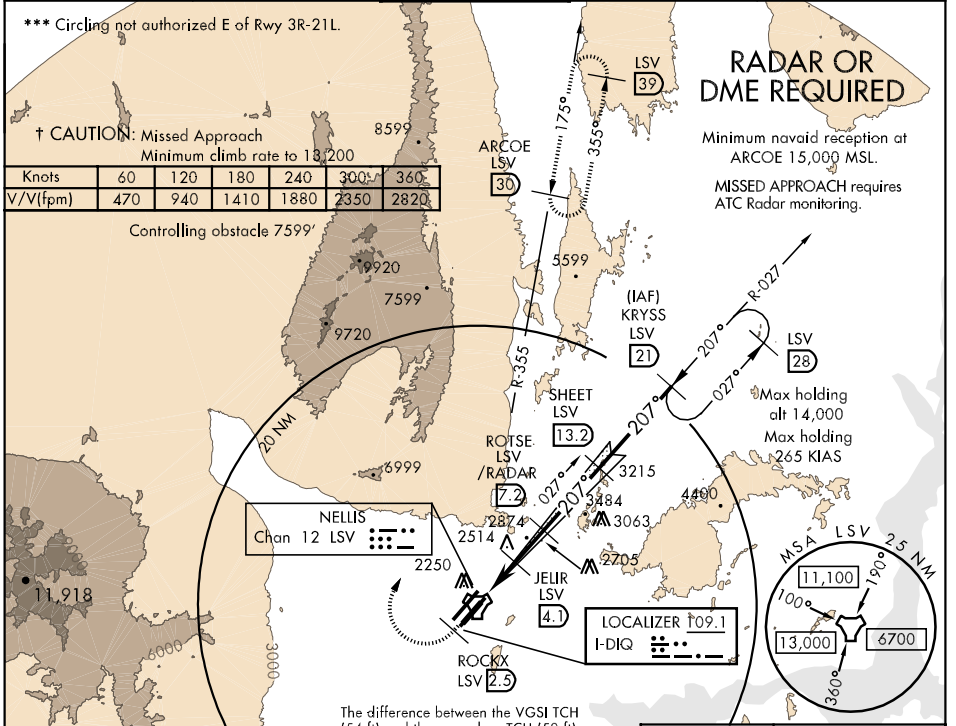
LOC I-DIQ 109.1	APCH CRS 207°	Rwy ldg 10,055 TDZE 1866 Arpt Elev 1870
---------------------------	-------------------------	--

AL-227 [USAF]

NELLIS AFB (KLSV)

▼ * When ALS inop, increase CAT ABCDE RVR to 40, vis to ¾ mile.
** When ALS inop, increase CAT AB RVR to 50, vis to 1 mile, CAT C vis to 1½ miles, CAT D vis to 1¾ miles, CAT E vis to 2 miles.

ATIS 270.1	NELLIS APP CON 124.95 273.55	NELLIS TOWER 132.55 327.0	GND CON 121.8 275.8	CLNC DEL 120.9 289.4
----------------------	--	-------------------------------------	-------------------------------	--------------------------------



CATEGORY	A	B	C	D	E
S-ILS 21L *	2066/24		200	(200-½)	
S-LOC 21L **	2440/24 574 (600-½)		2440/50 574 (600-1)	2440/60 574 (600-1½)	2440-1½ 574 (600-1½)
CIRCLING ***	2480-1 610 (700-1)	2680-1¼ 810 (900-1¼)	2680-2¼ 810 (900-2¼)	2680-2½ 810 (900-2½)	2940-3 1070 (1100-3)

SW-4, 23 SEP 2010 to 21 OCT 2010

SW-4, 23 SEP 2010 to 21 OCT 2010



INDIAN SPRINGS, NEVADA

TACAN INS Chan 87	APCH CRS 065°	Rwy ldg TDZE 3133	9002 3113
		Arpt Elev 3113	

INDIAN SPRINGS AF AUX (KINS)

▼ * MISSED APPROACH: Straight ahead to INS TACAN, intercept INS R-outbound, cross 17 DME at or above 9500, then direkt KSV TACAN 114

NELLIS CON

CREECH AFB TOWER
118.30 60.60

GND CON

NOT FOR CIVIL USE

FOR USE UNDER BASIC VFR
WEATHER MINIMUMS ONLY

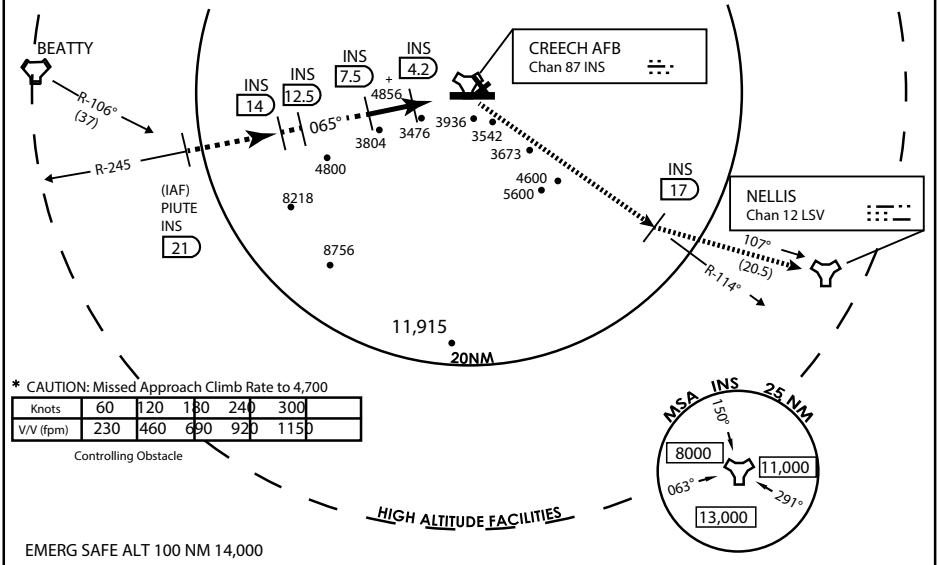
PILOT IS RESPONSIBLE FOR TERRAIN/OBSTACLE AVOIDANCE AND APPROPRIATE VFR CLOUD CLEARANCE FOR ALL

CAUTION: Descent gradients are greater than allowed under standard TERPS criteria and inbound course does not meet straight-in criteria

CAUTION: Final approach course crosses Runway centerline at MIDFIELD. Maneuvering left of course required prior to landing. Do not Maneuver farther north than the INS R- 258

Modified by viaBog 66 for use with DCS
NOT FOR REAL LIFE NAVIGATION

Modified by viaBog 66 for use with DCS
NOT FOR REAL LIFE NAVIGATION



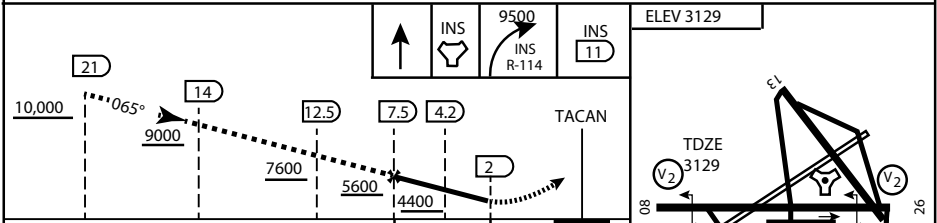
* CAUTION: Missed Approach Climb Rate to 4,700

Knots	60	120	180	240	300
V/V (fpm)	230	460	690	920	1150

Controlling Obstacle

HIGH ALTITUDE FACILITIES

EMERG SAFE ALT 100 NM 14,000



CATEGORY	A	B	C	D	E
S-8	3760-1 1/2	627 (700-1 1/2)	3760-1 3/4 627 (700-1 3/4)	3760-2 627 (700-2)	3760-2 1/4 627 (700-2 1/4)
CIRCLING	NOT AUTHORIZED				

MIRL Rwy 8-26

CITY OF INDIAN, NEVADA

INDIAN SPRINGS AF AUX (KINS)

(FOR DAY VFR USE ONLY)



AIRPORT DIAGRAM

476 VFG

CREECH AFB (KINS)
INDIAN SPRINGS, NEVADA

ATIS
 122.5
 CREECH TOWER
 118.4 360.7 38.65
 GND CON
 118.3 275.8
 CLNC DEL

115°42'W

FIELD
 ELEV
 3127

80

972 X 150

HOT
CARGO
PAD

BAK-12

VAR 12.5° E

WEST
EOR

115°41'W

476 VFG JAN 2019

CONTROL
 TOWER
 BASE
 OPS

RPA LOLA
WEST

RPA LOLA
EAST

LOLA /
HUNG
ORDNANCE

RUNWAY
 31/13
 MQ/RQ-1
 ONLY

9002 X 150

258.5°

860 X 100

313.8°

4064 X 100

199 X 100

ELEV
3127

EAST
EOR

BAK-12

ELEV
3127

1030 X 150

115°40'W

476 VFG JAN 2019

AIRPORT DIAGRAM

INDIAN SPRINGS, NEVADA
CREECH AFB (KINS)