

**MISSION DATA CARD**

OPORD		Callsign		Mission		Date/Time		
3575/2025		Rattler 1		Training		232012JAN25		
Task	Training					Freq		
AO						133.5		
Departure				Recovery				
HELICOPTER DEP				HELICOPTER ARR				
#	Callsign		Pilot		IFF	TCN	LSR	NET
-1	Rattler 1-1		Remotex/Remotex		4611	1Y	1251	01/01
-2	Rattler 1-2		Laud/Laud		4612	64Y	1252	01/02

**LOADOUT**

A/A						GUN	40% HEDP
A/G						CHF	30
POD						FLR	60
TKS	2xFT230					FUEL	50%

**TOLD**

	Takeoff	Target	Joker	Bingo	Land
FUEL	4352			1000	

**AIRBASES**

	Name	TCN	ATIS	GND	TWR	RWY	Elev	ILS
Dep	Nellis AFB	12X	270.1	275.8	327.0	21L	1850	109.1
Arr	Nellis AFB	12X	270.1	275.8	327.0	21L	1850	109.1
Div	Creech AFB	87X	290.45	275.8	360.6			

**FLIGHTPLAN**

#	Name	Navaid/Coords/DME	ALT	TOT
1	WEST FLEX	LSV 307/6.5 (N36 18.640 W115 08)	250	
2	Winner LZ	LSV 356/6 (N36 20.330 W115 00.250)	0	
3	Nellis	N36 14.680 W115 01.500	0	

## OTHER FLIGHTS

Callsign	Mission	Airframe	Freq	TCN	Grpld	Laser
Monster 4	Training	4x A-10C	132.15	1/64	25	155X
AO		Task	SAM Defense			
Nazgul 6	Training	4x F-15E	262.45	1/64		156X
AO	Range 66	Task	CAS Training FAC (A)			
Edelweiss 6	Training	1x F/A-18C	134.65	1/64	40	166X
AO	RANGE 64C	Task				
Tiger 1	Training	4x F/A-18C	261.15	1/64	1	155X
AO	R71S	Task	SEAD			
Edelweiss	Training	2x Ground	264.05	1/64		170X
AO		Task				
Edelweiss 1	CAP	1x F-14B	264.15	1/64	1	171X
AO		Task				

**RADIO CHANNELS**

#	Freq	Name
1		Flight/Squadron specific
2	289.4	Nellis Clearance Delivery
3	275.8	Nellis Ground
4	327.0	Nellis Tower
5	385.4	Nellis Approach/Departure West
6	273.55	Nellis Approach/Departure East
7	317.525	Nellis Control -- Sally
8	254.4	Nellis Control-- Lee
9	305.6	SOF Bullseye
10	343.725	EMERGENCY SINGLE FRQ
11	270.1	Nellis ATIS
12	360.625	Creech AFB Tower
13	250.1	HAVE QUICK 13
14	251.1	HAVE QUICK 14
15	252.1	HAVE QUICK 15
16	377.8	Blackjack
17	265.0	KC-135 AR-641A
18	360.8	KC-135MPRS AR-635
19	319.8	KC-135MPRS AR-625
20	300.05	KC-135 AR-231V

**RAMROD**

0	1	2	3	4	5	6	7	8	9
C	H	A	M	P	I	O	N	E	D

**KTC 1400 C**

	0	1	2	3	4	5	6	7	8	9
A	BXVS	UTK	RAW	IM	GC	YOH	ED	FP	NJ	LQ
B	YQRU	PVJ	BKS	IO	FC	DWL	MG	XA	HT	EN
C	HDAK	WUC	EOI	GM	BS	NPJ	QV	XR	YF	TL
D	SDYR	QKT	OUG	FM	CX	BJE	IH	WA	NP	LV
E	MTAQ	PXS	CYN	BO	DW	KVR	IF	UG	HE	LJ
F	FOBP	GUA	CJI	VM	XW	END	QL	YK	HT	RS
G	QRWN	XGB	KHT	JD	VI	EUS	FO	LA	CP	MY
H	XCAP	MTS	NKI	FQ	UL	VJY	RG	OW	BD	HE
I	AMNS	EYC	RHG	XL	WK	FQD	JO	IB	TV	UP
J	WUSG	VIK	BJH	CR	EF	MNP	DQ	XY	AT	LO
K	XVWR	HCA	NQU	MI	BO	GPE	KD	YT	LF	JS
L	ORNG	FYK	PIC	BD	UX	EVT	JL	WA	MQ	HS
M	JRGT	OEA	LCK	HP	SX	MBN	VD	FU	YW	QI
N	ITNO	DWY	LVB	XS	UR	AQK	GF	PH	EJ	MC
O	OSXK	MWQ	GDB	LI	JA	FYN	TV	PU	HR	EC
P	AUBJ	DMX	PNW	SC	HY	IGF	VO	QK	LR	TE
Q	HCQG	WAN	KBI	MO	VR	YJS	UT	XL	FE	DP
R	SVYP	OMJ	QEW	AI	KD	NTH	RX	GF	UC	BL
S	BYFP	TCD	VKL	EX	RS	GMN	JO	UA	HI	QW
T	OKCY	JMV	QNT	AB	XL	WPD	RI	GE	SF	UH
U	YOGF	MQL	XEA	HI	PD	JKS	RW	BU	VT	NC
V	MGRU	APS	WNX	HK	BJ	QDC	FY	EI	LV	OT
W	NBXW	LCF	IGJ	VR	MU	DYH	EA	OK	PQ	TS
X	YTWf	PAK	QBJ	UD	VX	EGC	RN	LO	SM	HI
Y	JXQE	ADY	FUH	IP	RN	SCB	VW	LK	GT	MO

**NAVAIDS**

<b>Id</b>	<b>Name</b>	<b>Channel</b>	<b>Position</b>	<b>Elevation</b>
BCE	Bryce Canyon	75	N3741.35 W11218.23	9040
BIH	Bishop	33	N3722.62 W11821.99	4114
BLD	Boulder	114	N3559.75 W11451.82	3650
BTY	Beatty	94	N3648.54 W11644.86	2925
CDC	Cedar City	120	N3747.24 W11304.90	5463
DAG	Daggett	79	N3457.75 W11634.69	1760
EED	Needles	99	N3445.96 W11428.43	650
GFS	Goffs	91	N3507.87 W11510.59	4019
GRL	Groom Lake	18	N3713.91 W11548.16	4475
HEC	Hector	74	N3447.83 W11627.78	1854
ILC	Wilson Creek	110	N3815.02 W11423.65	9318
INS	Creech AFB	87	N3635.20 W11540.12	3101
LAS	McCarran Intl	116	N3604.78 W11509.59	2142
LSV	Nellis	12	N3614.68 W11501.50	1864
MLF	Milford	58	N3821.62 W11300.79	4977
MMM	Mormon Mesa	90	N3646.16 W11416.65	2120
MVA	Mina	98	N3833.92 W11801.97	7860
OAL	Coale Dale	124	N3800.20 W11746.23	4800
PGS	Peach Springs	57	N3537.48 W11332.67	4754
TPH	Tonopah Muni	119	N3801.84 W11702.01	5330
TQQ	Silverbow	77	N3748.00 W11647.00	5500
UTI	St George	23	N3705.29 W11335.53	2871



RWY 3L-21R  
 PCN 46 R/C/W/T  
 RWY 3R-21L  
 PCN 51 R/C/W/T  
 2017

PAR	RWY	CAT	MINIMA		ARP	ELEV	Scale 1:35'500	
	21L	A B D E	2057 - 0.8 200	(200-0.8/1.6) GS 3°	36° 14.060° N 115° 01.058° W	1857 [ft] 566 [m]	0 300 600 900 1200 1500 [m]	
	3R	A B D E	2057 - 0.8 200	(200-0.8/1.6) GS 3°			0 1000 2000 3000 4000 5000 [ft]	
SRA	21R	A C D E	2257 - 1.2 350	(350-1.2/1.6)				
	3L	A C D E	2257 - 1.2 350	(350-1.2/1.6)				

RWY	TORA	TODA	ASDA	LDA	PSN	THR	ALS
21L	10051 [ft] 3063 [m]	11051 [ft] 3368 [m]	11051 [ft] 3368 [m]	10051 [ft] 3063 [m]	36°14.043' N	115°01.018' W	⊕
3R	10120 [ft] 3084 [m]	11120 [ft] 3398 [m]	11120 [ft] 3398 [m]	10120 [ft] 3084 [m]	36°13.029' N	115°02.038' W	

ATIS	NELLIS GROUND	NELLIS TOWER	NELLIS CONTROL	TACAN	ILS RWY 21L	NELLIS EAST	NELLIS WEST
270.100 MHz	275.800   121.800	327.000   132.55	317.525	LSV 12X	109.10 Mhz	384.400	385.000

# HELICOPTER ARR/DEP VAD-CHART | VALID 2014

**NELLIS AFB (KLSV)**  
LAS VEGAS, NEVADA

ATIS  
270.100  
NELLIS GROUND  
275.800  
NELLIS TOWER  
327.000  
BLACKJACK  
377.800

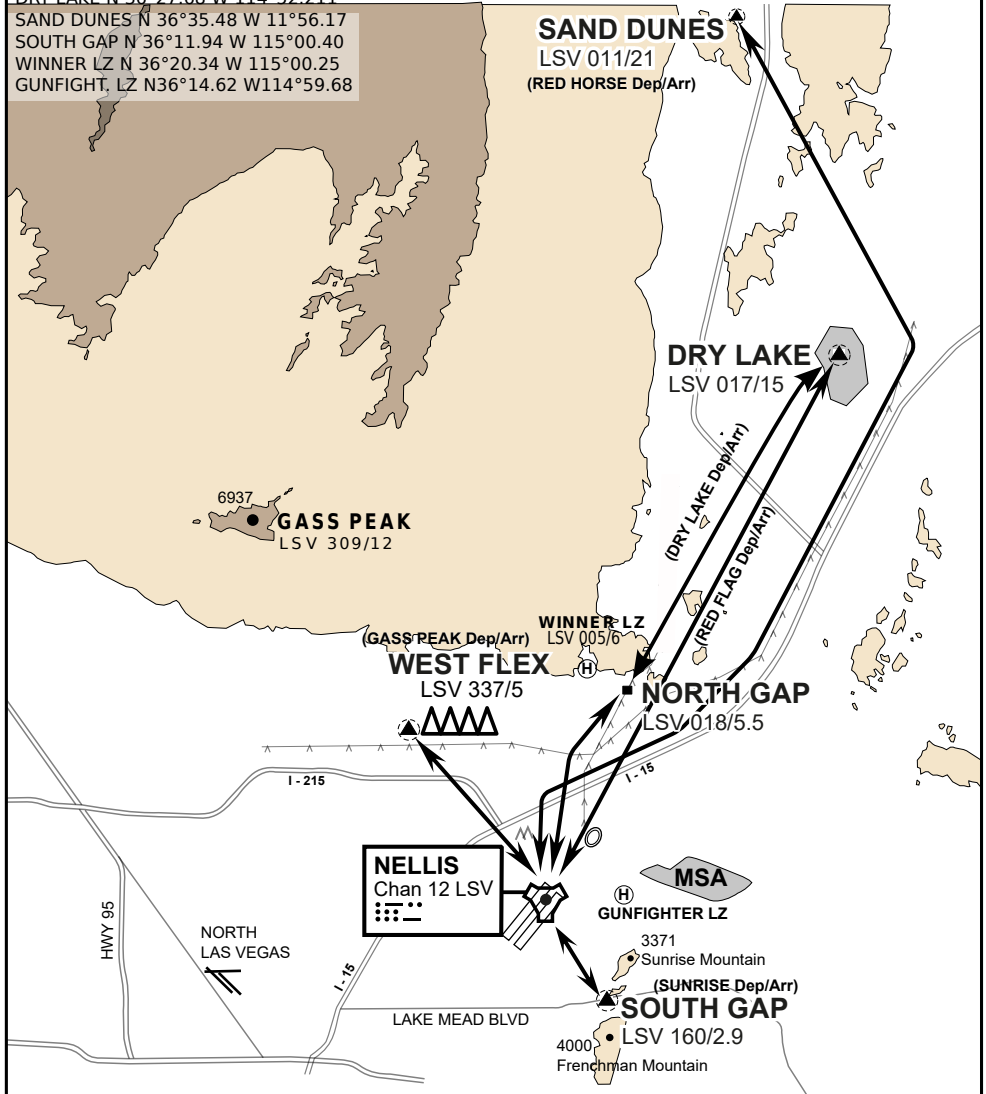
CAUTION: If unable to comply  
with restrictions advise ATC  
prior to departure.

## VMC ONLY

if below WX Minima request SVFR



JOLLY PAD N 36°15.08 W 115°01.65  
WEST FLEX N 36°18.64 W 115°08.00  
NORTH GAP N 36°20.00 W 114°59.30  
DRY LAKE N 36°27.68 W 114°52.211  
SAND DUNES N 36°35.48 W 11°56.17  
SOUTH GAP N 36°11.94 W 115°00.40  
WINNER LZ N 36°20.34 W 115°00.25  
GUNFIGHT, LZ N36°14.62 W114°59.68



vJABeG32NTRR NAV CHART

# HELICOPTER ARRIVAL AND DEPARTURES ROUTES

v.110 22APR20



# HELICOPTER ARR/DEP VAD-CHART | VALID 2014

**NELLIS AFB (KLSV)**  
LAS VEGAS, NEVADA

ATIS  
270.100  
NELLIS GROUND  
275.800  
NELLIS TOWER  
327.000  
BLACKJACK  
377.800

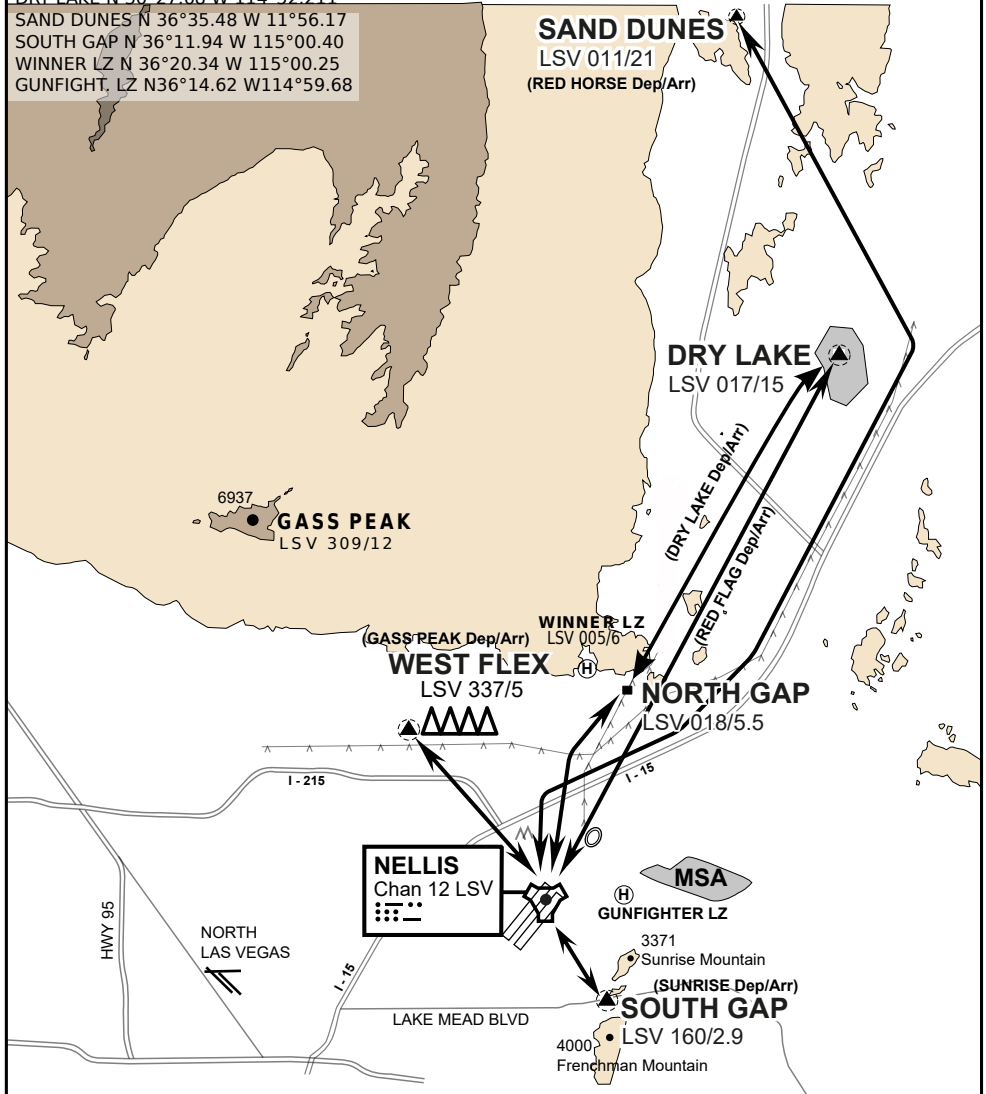
CAUTION: If unable to comply  
with restrictions advise ATC  
prior to departure.

## VMC ONLY

if below WX Minima request SVFR



JOLLY PAD N 36°15.08 W 115°01.65  
WEST FLEX N 36°18.64 W 115°08.00  
NORTH GAP N 36°20.00 W 114°59.30  
DRY LAKE N 36°27.68 W 114°52.211  
SAND DUNES N 36°35.48 W 11°56.17  
SOUTH GAP N 36°11.94 W 115°00.40  
WINNER LZ N 36°20.34 W 115°00.25  
GUNFIGHT, LZ N36°14.62 W114°59.68



vJABeG32NTRR NAV CHART

# HELICOPTER ARRIVAL AND DEPARTURES ROUTES

v.110 22APR20



INDIAN SPRINGS, NEVADA

TACAN INS Chan 87	APCH CRS 065°	Rwy ldg TDZE 3133	9002 3113
		Arpt Elev 3113	

INDIAN SPRINGS AF AUX (KINS)

**▼** \* MISSED APPROACH: Straight ahead to INS TACAN, intercept INS R-outbound, cross 17 DME at or above 9500, then direkt KSV TACAN 114

NELLIS CON

CREECH AFB TOWER  
118.30 60.60

GND CON

**NOT FOR CIVIL USE**

FOR USE UNDER BASIC VFR  
WEATHER MINIMUMS ONLY

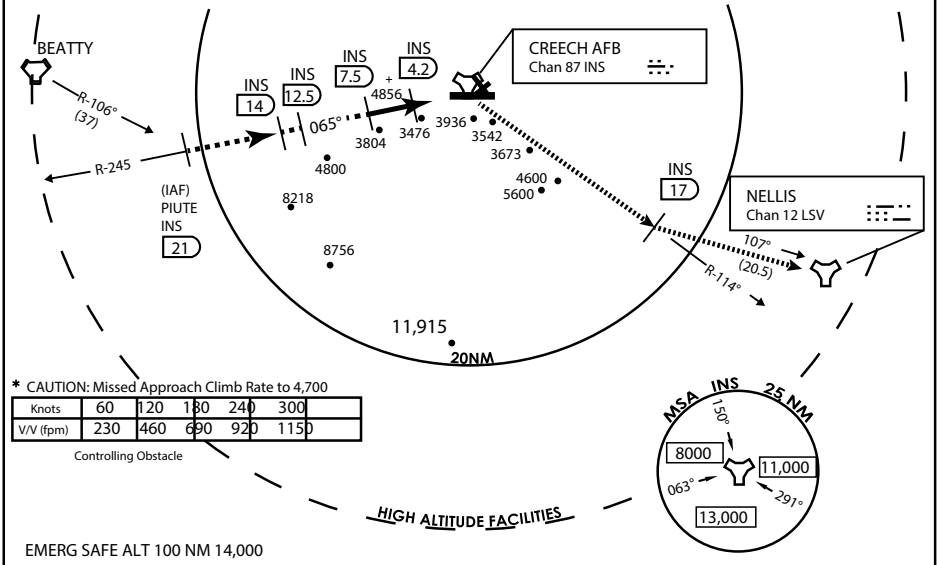
PILOT IS RESPONSIBLE FOR TERRAIN/OBSTACLE AVOIDANCE AND APPROPRIATE VFR CLOUD CLEARANCE FOR ALL

CAUTION: Descent gradients are greater than allowed under standard TERPS criteria and inbound course does not meet straight-in criteria

CAUTION: Final approach course crosses Runway centerline at MIDFIELD. Maneuvering left of course required prior to landing. Do not Maneuver farther north than the INS R- 258

Modified by viaBog 66 for use with DCS  
NOT FOR REAL LIFE NAVIGATION

Modified by viaBog 66 for use with DCS  
NOT FOR REAL LIFE NAVIGATION



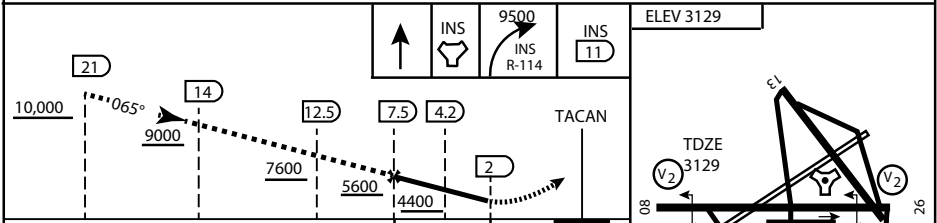
\* CAUTION: Missed Approach Climb Rate to 4,700

Knots	60	120	180	240	300
V/V (fpm)	230	460	690	920	1150

Controlling Obstacle

HIGH ALTITUDE FACILITIES

EMERG SAFE ALT 100 NM 14,000



CATEGORY	A	B	C	D	E
S-8	3760-1 1/2	627 (700-1 1/2)	3760-1 3/4 627 (700-1 3/4)	3760-2 627 (700-2)	3760-2 1/4 627 (700-2 1/4)
CIRCLING	NOT AUTHORIZED				

MIRL Rwy 8-26

CITY OF INDIAN, NEVADA

INDIAN SPRINGS AF AUX (KINS)

(FOR DAY VFR USE ONLY)



# AIRPORT DIAGRAM

476 VFG

CREECH AFB (KINS)  
INDIAN SPRINGS, NEVADA

ATIS  
 122.5  
 CREECH TOWER  
 118.4 360.7 38.65  
 GND CON  
 118.3 275.8  
 CLNC DEL

FIELD  
 ELEV  
 3127

HOT  
 CARGO  
 PAD

VAR 12.5° E

WEST EOR

BAK-12

115°41'W

CONTROL  
 TOWER  
 BASE  
 OPS

RPA LOLA WEST

RPA LOLA EAST

LOLA / HUNG ORDNANCE

RUNWAY  
 31/13  
 MQ/RQ-1  
 ONLY

9002 X 150

258.5°

860 X 100

313.8°

4064 X 100

199 X 100

ELEV 3127

133.8°

BAK-12

ELEV 3127

115°40'W

EAST EOR

1030 X 150

26

476 VFG JAN 2019

476 VFG JAN 2019

# AIRPORT DIAGRAM

INDIAN SPRINGS, NEVADA  
CREECH AFB (KINS)