

MISSION DATA CARD

OPORD		Callsign		Mission		Date/Time	
3573/2025		Tiger 1		Training		232200JAN25	
Task	SEAD					Freq	
AO	R71S					261.15	
Departure				Recovery			
FYTTR LOW				STRYK			
#	Callsign	Pilot	IFF	TCN	LSR	NET	
-1	Tiger 1-1	Ghost	1011	1Y	1551	01/01	
-2	Tiger 1-2	Kosmoss	1012	64Y	1552	01/02	
-3	Tiger 1-3	Hawk	1013	64X	1553	01/03	

LOADOUT

A/A	2xA9X, A120C			GUN	100% HEI-T		
A/G	2xA65F, 2x3x ADM-141A - BRU-42			CHF	90		
POD	TGP			FLR	30		
TKS	FPU-8A			FUEL	100%		

TOLD

	Takeoff	Target	Joker	Bingo	Land
FUEL	13047			4000	

AIRBASES

	Name	TCN	ATIS	GND	TWR	RWY	Elev	ILS
Dep	Nellis AFB	12X	270.1	275.8	327.0	21L	1850	109.1
Arr	Nellis AFB	12X	270.1	275.8	327.0	21L	1850	109.1
Div	Creech AFB	87X	290.45	275.8	360.6			

FLIGHTPLAN

#	Name	Navaid/Coords/DME	ALT	TOT
1	FYTTR	LSV 269/33 (N36 21.440 W115 41.470)	14000	
2	Beatty Airport	N36 51.682 W116 47.186	25000	
3	AR625.1	N37 17 W118 02	24000	
4	LIDAT	N37 25 W117 16	25000	
5	STONEWALL	N37 30 W117 03	25000	
6	Range 71S	N37 36.499 W116 54.340	0	
7	LIDAT	N37 25 W117 16	25000	
8	Beatty Airport	N36 51.682 W116 47.186	25000	
9	STRYK	LSV 282/26 (N36 25.620 W115 30.700)	9500	

COMMS

Radio	Usage
1	11(Atis), 3(NG), 4(NT), 16(BJ), 18(SH), 16(BJ), 4(NT), 3(NG)
2	261.15
3	Mids A 22
4	Mids B 44

SUPPORT**Tanker**

Callsign	TCN	Freq	ALT	TAS
ARCO 1	113Y	319.8	FL250	450
	Pos	AR-625: MVA 168/77 (N3717 W11802)		
SHELL 2	115Y	360.8	FL250	430
	Pos	AR-635: MLF 260/127 (N3831 W11542)		

AWACS

Callsign	Freq	ALT	Pos
MAGIC	377.8	FL270	N3749 W11417 - N3713 W11446

OTHER FLIGHTS

Callsign	Mission	Airframe	Freq	TCN	Grpld	Laser
Monster 4	Training	4x A-10C	132.15	1/64	25	155X
AO		Task	SAM Defense			
Nazgul 6	Training	4x F-15E	262.45	1/64		156X
AO	Range 66	Task	CAS Training FAC (A)			
Edelweiss 6	Training	1x F/A-18C	134.65	1/64	40	166X
AO	RANGE 64C	Task				
Edelweiss	Training	2x Ground	264.05	1/64		170X
AO		Task				
Rattler 1	Training	2x AH-64D	133.5	1/64	1	125X
AO		Task	Training			
Edelweiss 1	CAP	1x F-14B	264.15	1/64	1	171X
AO		Task				

RADIO CHANNELS

#	Freq	Name
1		Flight/Squadron specific
2	289.4	Nellis Clearance Delivery
3	275.8	Nellis Ground
4	327.0	Nellis Tower
5	385.4	Nellis Approach/Departure West
6	273.55	Nellis Approach/Departure East
7	317.525	Nellis Control -- Sally
8	254.4	Nellis Control-- Lee
9	305.6	SOF Bullseye
10	343.725	EMERGENCY SINGLE FRQ
11	270.1	Nellis ATIS
12	360.625	Creech AFB Tower
13	250.1	HAVE QUICK 13
14	251.1	HAVE QUICK 14
15	252.1	HAVE QUICK 15
16	377.8	Blackjack
17	265.0	KC-135 AR-641A
18	360.8	KC-135MPRS AR-635
19	319.8	KC-135MPRS AR-625
20	300.05	KC-135 AR-231V

RAMROD										
0	1	2	3	4	5	6	7	8	9	
C	H	A	M	P	I	O	N	E	D	
KTC 1400 C										
	0	1	2	3	4	5	6	7	8	9
A	BXVS	UTK	RAW	IM	GC	YOH	ED	FP	NJ	LQ
B	YQRU	PVJ	BKS	IO	FC	DWL	MG	XA	HT	EN
C	HDAK	WUC	EOI	GM	BS	NPJ	QV	XR	YF	TL
D	SDYR	QKT	OUG	FM	CX	BJE	IH	WA	NP	LV
E	MTAQ	PXS	CYN	BO	DW	KVR	IF	UG	HE	LJ
F	FOBP	GUA	CJI	VM	XW	END	QL	YK	HT	RS
G	QRWN	XGB	KHT	JD	VI	EUS	FO	LA	CP	MY
H	XCAP	MTS	NKI	FQ	UL	VJY	RG	OW	BD	HE
I	AMNS	EYC	RHG	XL	WK	FQD	JO	IB	TV	UP
J	WUSG	VIK	BJH	CR	EF	MNP	DQ	XY	AT	LO
K	XVWR	HCA	NQU	MI	BO	GPE	KD	YT	LF	JS
L	ORNG	FYK	PIC	BD	UX	EVT	JL	WA	MQ	HS
M	JRGT	OEA	LCK	HP	SX	MBN	VD	FU	YW	QI
N	ITNO	DWY	LVB	XS	UR	AQK	GF	PH	EJ	MC
O	OSXK	MWQ	GDB	LI	JA	FYN	TV	PU	HR	EC
P	AUBJ	DMX	PNW	SC	HY	IGF	VO	QK	LR	TE
Q	HCQG	WAN	KBI	MO	VR	YJS	UT	XL	FE	DP
R	SVYP	OMJ	QEW	AI	KD	NTH	RX	GF	UC	BL
S	BYFP	TCD	VKL	EX	RS	GMN	JO	UA	HI	QW
T	OKCY	JMV	QNT	AB	XL	WPD	RI	GE	SF	UH
U	YOGF	MQL	XEA	HI	PD	JKS	RW	BU	VT	NC
V	MGRU	APS	WNX	HK	BJ	QDC	FY	EI	LV	OT
W	NBXW	LCF	IGJ	VR	MU	DYH	EA	OK	PQ	TS
X	YTWF	PAK	QBJ	UD	VX	EGC	RN	LO	SM	HI
Y	JXQE	ADY	FUH	IP	RN	SCB	VW	LK	GT	MO

NAVAIDS

Id	Name	Channel	Position	Elevation
BCE	Bryce Canyon	75	N3741.35 W11218.23	9040
BIH	Bishop	33	N3722.62 W11821.99	4114
BLD	Boulder	114	N3559.75 W11451.82	3650
BTY	Beatty	94	N3648.54 W11644.86	2925
CDC	Cedar City	120	N3747.24 W11304.90	5463
DAG	Daggett	79	N3457.75 W11634.69	1760
EED	Needles	99	N3445.96 W11428.43	650
GFS	Goffs	91	N3507.87 W11510.59	4019
GRL	Groom Lake	18	N3713.91 W11548.16	4475
HEC	Hector	74	N3447.83 W11627.78	1854
ILC	Wilson Creek	110	N3815.02 W11423.65	9318
INS	Creech AFB	87	N3635.20 W11540.12	3101
LAS	McCarran Intl	116	N3604.78 W11509.59	2142
LSV	Nellis	12	N3614.68 W11501.50	1864
MLF	Milford	58	N3821.62 W11300.79	4977
MMM	Mormon Mesa	90	N3646.16 W11416.65	2120
MVA	Mina	98	N3833.92 W11801.97	7860
OAL	Coale Dale	124	N3800.20 W11746.23	4800
PGS	Peach Springs	57	N3537.48 W11332.67	4754
TPH	Tonopah Muni	119	N3801.84 W11702.01	5330
TQQ	Silverbow	77	N3748.00 W11647.00	5500
UTI	St George	23	N3705.29 W11335.53	2871



RWY 3L-21R
 PCN 46 R/C/W/T
 RWY 3R-21L
 PCN 51 R/C/W/T
 2017

PAR	RWY	CAT	MINIMA		ARP	ELEV	Scale 1:35'500	
	21L	A B D E	2057 - 0.8 200	(200-0.8/1.6) GS 3°	36° 14.060° N 115° 01.058° W	1857 [ft] 566 [m]	0	300
	3R	A B D E	2057 - 0.8 200	(200-0.8/1.6) GS 3°			600	900
	21R	A C D E	2257 - 1.2 350	(350-1.2/1.6)			1200	1500 [m]
	3L	A C D E	2257 - 1.2 350	(350-1.2/1.6)			0	1000
							2000	3000
							4000	5000 [ft]

RWY	TORA	TODA	ASDA	LDA	PSN	THR	ALS
21L	10051 [ft] 3063 [m]	11051 [ft] 3368 [m]	11051 [ft] 3368 [m]	10051 [ft] 3063 [m]	36°14.043' N	115°01.018' W	⊕
3R	10120 [ft] 3084 [m]	11120 [ft] 3398 [m]	11120 [ft] 3398 [m]	10120 [ft] 3084 [m]	36°13.029' N	115°02.038' W	

ATIS	NELLIS GROUND	NELLIS TOWER	NELLIS CONTROL	TACAN	ILS RWY 21L	NELLIS EAST	NELLIS WEST
270.100 MHz	275.800 121.800	327.000 132.55	317.525	LSV 12X	109.10 Mhz	384.400	385.000

FYTTR LOW VISUAL OPERATION CHART | VALID 2014

ATIS
270.100
NELLIS GROUND
275.800
NELLIS TOWER
327.000
NELLIS CONTROL
317.525
NELLIS DEP/APP EAST
384.400
BLACKJACK
377.800

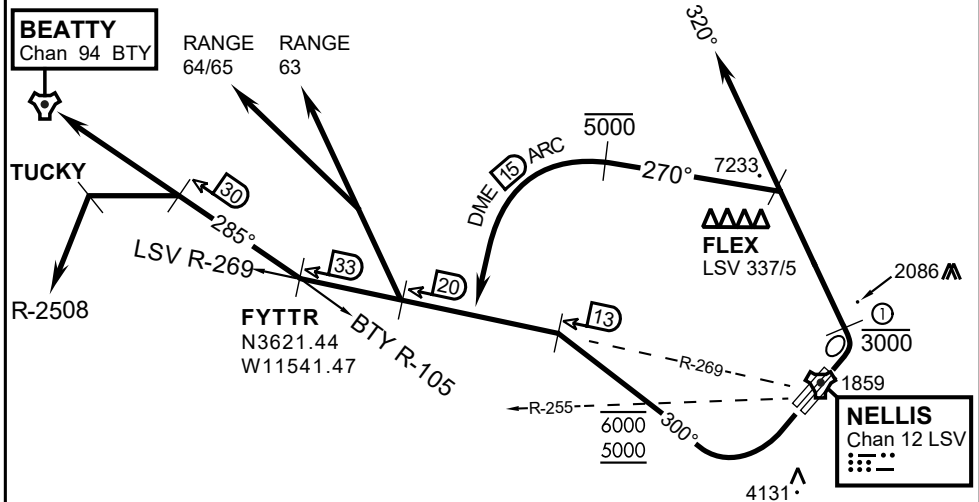
CAUTION: If unable to comply with restrictions advise ATC prior to departure.



VMC ONLY

PILOT RESPONSIBLE FOR TERRAIN AVOIDANCE

① 4 NM from RWY 3L/R



DEPARTURE ROUTE DESCRIPTION

TAKEOFF RWY 3L/R:

- Remain below 3,000' MSL until north of Race Track and turned westbound.
- Turn left within 4NM of Nellis direct FLEX. Fly north of FLEX and turn left heading 270°.
- Intercept LSV 15 DME ARC at or below 5,000' MSL.
- ARC south, intercept LSV R-269 outbound. Maintain VFR.

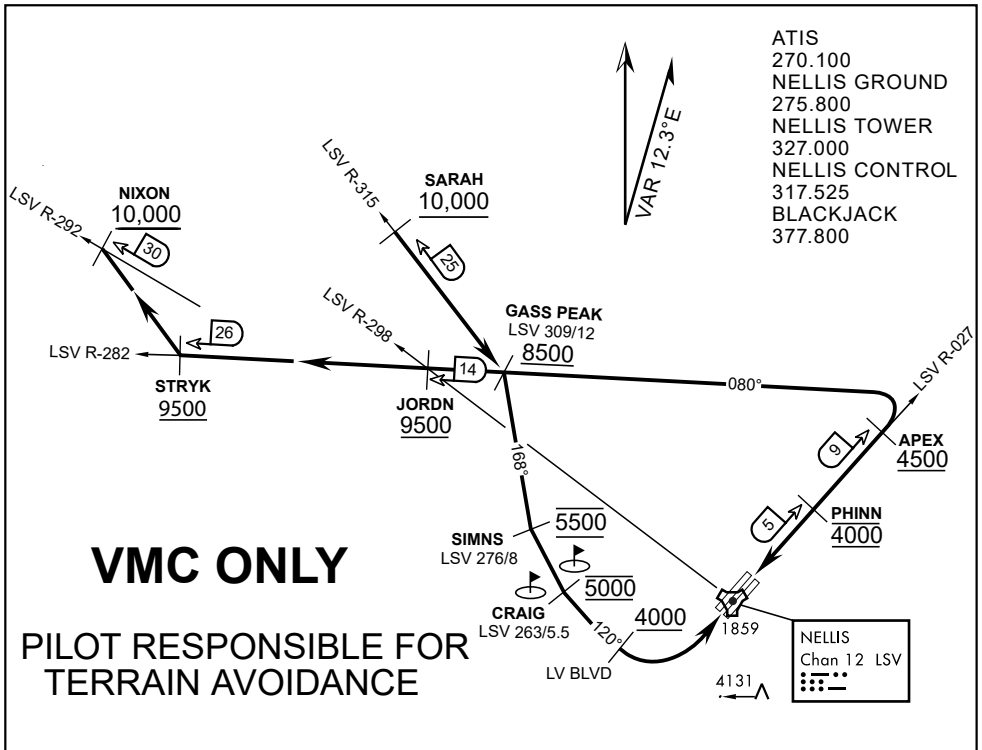
TAKEOFF RWY 21L/21R:

- Follow Noise Abatement Procedures.
- Fly runway heading until past Golf Course, turn right heading 300°.
- Cross LSV R-255 between 5,000' and 6,000' , intercept and proceed outbound on the LSV R-269.Recommend climb to 8,500' MSL or appropriate VFR altitude for overflight of North Las Vegas Training Area. Fly routing for appr. mission/transition.

TRANSITIONS:

- R-4806:** Turn right at the LSV 269/20 direct to assigned ranges.
- BEATTY:** Turn right at FYTTR direct BTY via the BTY R-105
- R-2508:** Turn right at the FYTTR, intercept the BTY 105/30, direct TUCKY, then direct R-2508

FYTTR DEPARTURE AND TRANSITIONS (FYTTR LOW)



APPROACH ROUTE DESCRIPTION

APPROACH RWY 3L/R

Cross STRYK at or above 9,500' MSL, proceed direct GASS PEAK. Cross JORDN at or above 9,500' MSL, cross GASS PEAK at or above 8,500' MSL. Proceed direct SIMNS and cross at 5,500' MSL. Cross Las Vegas Blvd at or above 4,000' MSL then to 3,500' MSL for Initial. Remain within 4 DME if LSV on turn to final.

VFR STRAIGHT-IN RWY 3L/R

Depart CRAIG & descend to be at 3,000' MSL by Las Vegas Blvd. Do not descend below 3,000' MSL until within 5 DME of LSV or 4 NM of the runway on turn to final.

APPROACH RWY 21L/R

Cross STRYK at or above 9,500' MSL, proceed direct GASS PEAK. Cross JORDN at or above 9,500' MSL, cross GASS PEAK at or above 8,500' MSL. Cross APEX at or above 4,500' MSL then direct 5NM initial. Descend to cross PHINN at 4,000' MSL, Inside 5 NM descend to 3,500' MSL.

VFR STRAIGHT-IN RWY 21L/R

Cross APEX at 4,000' MSL. Descend to be at 3,000' MSL at PHINN. Descend to 3,000' MSL at LSV 027/5.

RANGE 63B EXIT

SOUTH: Via NIXON at or above 10,000' MSL, then direct STRYK.
EAST: Via SARAH at or above 10,000' MSL, then direct GASS PEAK.



INDIAN SPRINGS, NEVADA

TACAN INS Chan 87	APCH CRS 065°	Rwy ldg TDZE 3133	9002 3133 3113
----------------------	------------------	-------------------------	----------------------

INDIAN SPRINGS AF AUX (KINS)

▼ * MISSED APPROACH: Straight ahead to INS TACAN, intercept INS R-outbound, cross 17 DME at or above 9500, then direkt KSV TACAN 114

NELLIS CON

CREECH AFB TOWER
118.30 60.60

GND CON

NOT FOR CIVIL USE

FOR USE UNDER BASIC VFR
WEATHER MINIMUMS ONLY

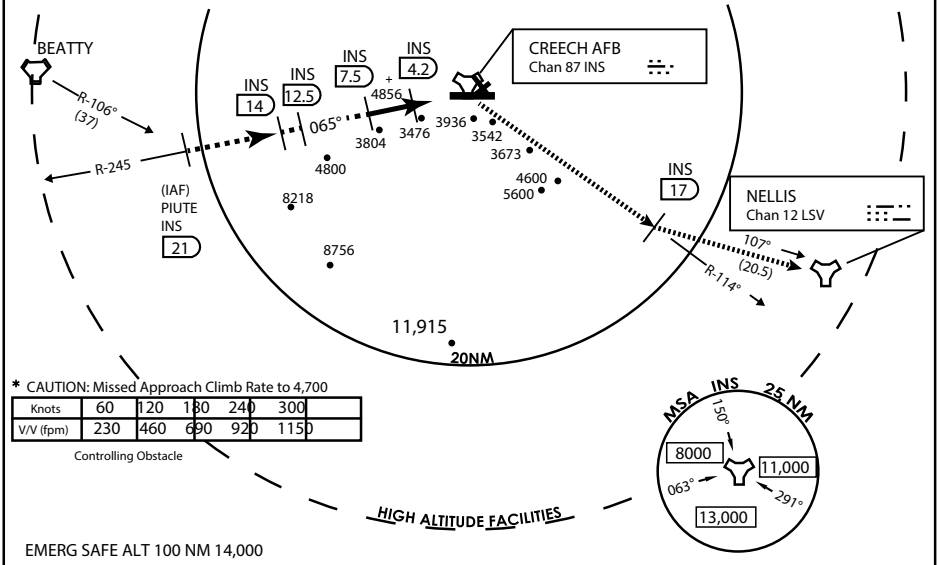
PILOT IS RESPONSIBLE FOR TERRAIN/OBSTACLE AVOIDANCE AND APPROPRIATE VFR CLOUD CLEARANCE FOR ALL

CAUTION: Descent gradients are greater than allowed under standard TERPS criteria and inbound course does not meet straight-in criteria

CAUTION: Final approach course crosses Runway centerline at MIDFIELD. Maneuvering left of course required prior to landing. Do not Maneuver farther north than the INS R- 258

Modified by vJaBoG 66 for use with DCS
NOT FOR REAL LIFE NAVIGATION

Modified by vJaBoG 66 for use with DCS
NOT FOR REAL LIFE NAVIGATION

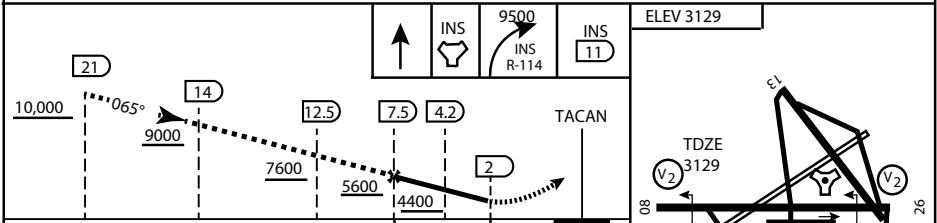


* CAUTION: Missed Approach Climb Rate to 4,700

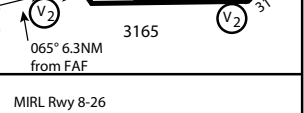
Knots	60	120	180	240	300
V/V (fpm)	230	460	690	920	1150

Controlling Obstacle

HIGH ALTITUDE FACILITIES



CATEGORY	A	B	C	D	E
S-8	3760-1 1/2	627 (700-1 1/2)	3760-1 3/4 627 (700-1 3/4)	3760-2 627 (700-2)	3760-2 1/4 627 (700-2 1/4)
CIRCLING	NOT AUTHORIZED				



CITY OF INDIAN, NEVADA

INDIAN SPRINGS AF AUX (KINS)

(FOR DAY VFR USE ONLY)



AIRPORT DIAGRAM

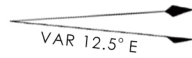
476 VFG

CREECH AFB (KINS)
INDIAN SPRINGS, NEVADA

ATIS
 122.5
 CREECH TOWER
 118.4 360.7 38.65
 GND CON
 118.3 275.8
 CLNC DEL

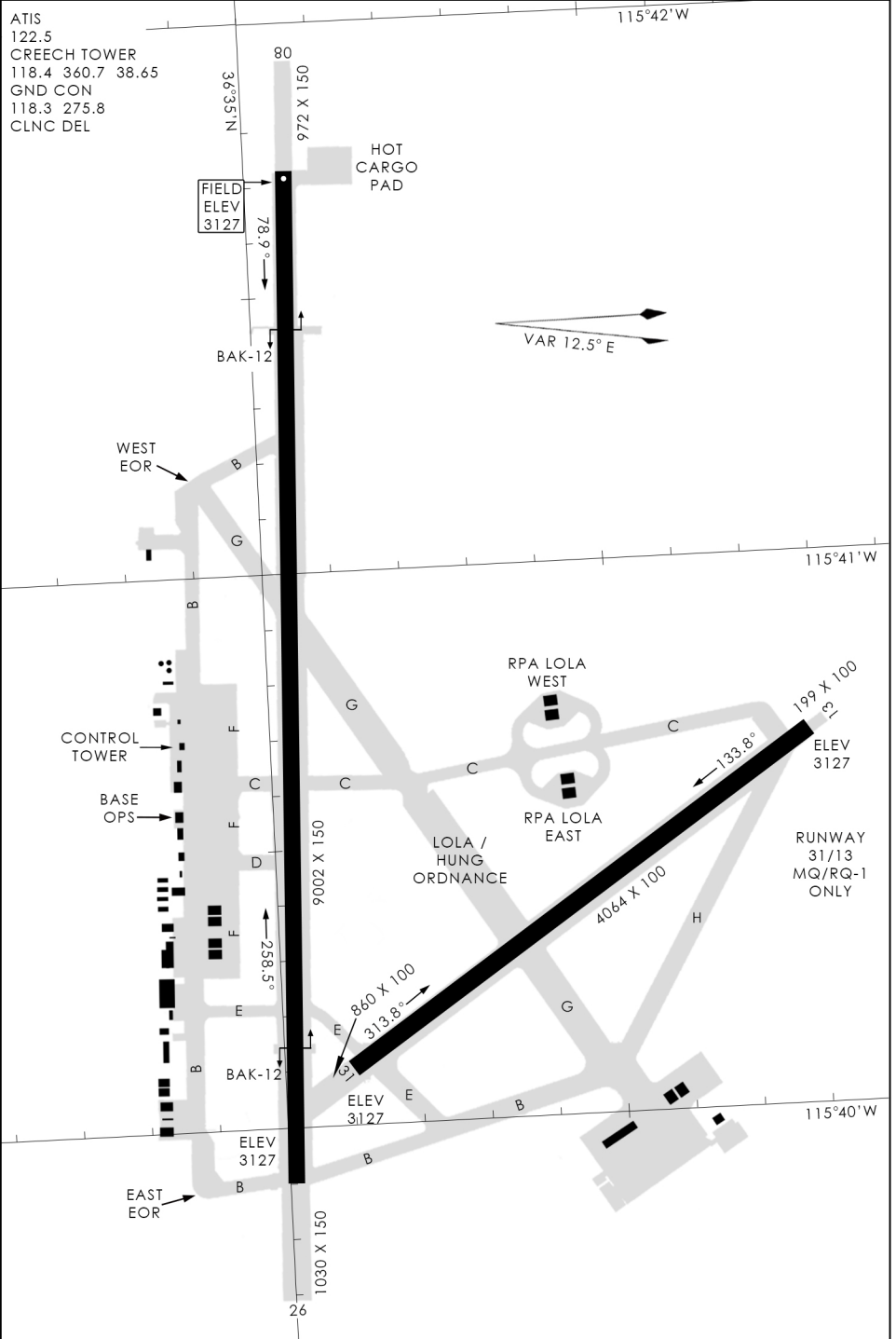
FIELD
 ELEV
 3127

HOT
 CARGO
 PAD



476 VFG JAN 2019

476 VFG JAN 2019



AIRPORT DIAGRAM

INDIAN SPRINGS, NEVADA
CREECH AFB (KINS)