

**MISSION DATA CARD**

OPORD	Callsign	Mission	Date/Time			
3572/2025	Edelweiss 6	Training	232000JAN25			
Task						Freq
AO	RANGE 64C					134.65
Departure			Recovery			
FYTTR LOW			HI-TACAN Y RWY 21L			
#	Callsign	Pilot	IFF	TCN	LSR	NET
-1	Edelweiss 6-1	Coach	1761	1Y	1661	40/01

**LOADOUT**

A/A	2xA9X, 2xA120C	GUN	100% HEI-T
A/G	4xM82	CHF	60
POD		FLR	60
TKS	3xFPU-8A	FUEL	100%

**TOLD**

	Takeoff	Target	Joker	Bingo	Land
FUEL	17535			4000	

**AIRBASES**

	Name	TCN	ATIS	GND	TWR	RWY	Elev	ILS
Dep	Nellis AFB	12X	270.1	275.8	327.0	21L	1850	109.1
Arr	Nellis AFB	12X	270.1	275.8	327.0	21L	1850	109.1
Div	Creech AFB	87X	290.45	275.8	360.6			

**FLIGHTPLAN**

#	Name	Navaid/Coords/DME	ALT	TOT
1	Nellis	N36 14.680 W115 01.500	14000	
2	FYTTR	LSV 269/33 (N36 21.440 W115 41.470)	14000	
3	Range 64C	N36 39.684 W115 42.200	14000	
4	Groom Lake	INS 339/42 (N37 16.500 W115 48)	24000	
5	Tonopah Airport	N38 03.545 W117 05.088	24000	

**COMMS**

Radio	Usage
1	3,4,16,4,3
2	265.35, 16, 134.5, 319.8

**SUPPORT****Tanker**

Callsign	TCN	Freq	ALT	TAS
ARCO 1	113Y	319.8	FL250	450
	Pos	AR-625: MVA 168/77 (N3717 W11802)		
SHELL 2	115Y	360.8	FL250	430
	Pos	AR-635: MLF 260/127 (N3831 W11542)		

## OTHER FLIGHTS

Callsign	Mission	Airframe	Freq	TCN	Grpld	Laser
Monster 4	Training	4x A-10C	132.15	1/64	25	155X
AO		Task	SAM Defense			
Nazgul 6	Training	4x F-15E	262.45	1/64		156X
AO	Range 66	Task	CAS Training FAC (A)			
Tiger 1	Training	4x F/A-18C	261.15	1/64	1	155X
AO	R71S	Task	SEAD			
Edelweiss	Training	2x Ground	264.05	1/64		170X
AO		Task				
Rattler 1	Training	2x AH-64D	133.5	1/64	1	125X
AO		Task	Training			
Edelweiss 1	CAP	1x F-14B	264.15	1/64	1	171X
AO		Task				

**RADIO CHANNELS**

#	Freq	Name
1		Flight/Squadron specific
2	289.4	Nellis Clearance Delivery
3	275.8	Nellis Ground
4	327.0	Nellis Tower
5	385.4	Nellis Approach/Departure West
6	273.55	Nellis Approach/Departure East
7	317.525	Nellis Control -- Sally
8	254.4	Nellis Control-- Lee
9	305.6	SOF Bullseye
10	343.725	EMERGENCY SINGLE FRQ
11	270.1	Nellis ATIS
12	360.625	Creech AFB Tower
13	250.1	HAVE QUICK 13
14	251.1	HAVE QUICK 14
15	252.1	HAVE QUICK 15
16	377.8	Blackjack
17	265.0	KC-135 AR-641A
18	360.8	KC-135MPRS AR-635
19	319.8	KC-135MPRS AR-625
20	300.05	KC-135 AR-231V

RAMROD										
0	1	2	3	4	5	6	7	8	9	
C	H	A	M	P	I	O	N	E	D	
KTC 1400 C										
	0	1	2	3	4	5	6	7	8	9
A	BXVS	UTK	RAW	IM	GC	YOH	ED	FP	NJ	LQ
B	YQRU	PVJ	BKS	IO	FC	DWL	MG	XA	HT	EN
C	HDAK	WUC	EOI	GM	BS	NPJ	QV	XR	YF	TL
D	SDYR	QKT	OUG	FM	CX	BJE	IH	WA	NP	LV
E	MTAQ	PXS	CYN	BO	DW	KVR	IF	UG	HE	LJ
F	FOBP	GUA	CJI	VM	XW	END	QL	YK	HT	RS
G	QRWN	XGB	KHT	JD	VI	EUS	FO	LA	CP	MY
H	XCAP	MTS	NKI	FQ	UL	VJY	RG	OW	BD	HE
I	AMNS	EYC	RHG	XL	WK	FQD	JO	IB	TV	UP
J	WUSG	VIK	BJH	CR	EF	MNP	DQ	XY	AT	LO
K	XVWR	HCA	NQU	MI	BO	GPE	KD	YT	LF	JS
L	ORNG	FYK	PIC	BD	UX	EVT	JL	WA	MQ	HS
M	JRGT	OEA	LCK	HP	SX	MBN	VD	FU	YW	QI
N	ITNO	DWY	LVB	XS	UR	AQK	GF	PH	EJ	MC
O	OSXK	MWQ	GDB	LI	JA	FYN	TV	PU	HR	EC
P	AUBJ	DMX	PNW	SC	HY	IGF	VO	QK	LR	TE
Q	HCQG	WAN	KBI	MO	VR	YJS	UT	XL	FE	DP
R	SVYP	OMJ	QEW	AI	KD	NTH	RX	GF	UC	BL
S	BYFP	TCD	VKL	EX	RS	GMN	JO	UA	HI	QW
T	OKCY	JMV	QNT	AB	XL	WPD	RI	GE	SF	UH
U	YOGF	MQL	XEA	HI	PD	JKS	RW	BU	VT	NC
V	MGRU	APS	WNX	HK	BJ	QDC	FY	EI	LV	OT
W	NBXW	LCF	IGJ	VR	MU	DYH	EA	OK	PQ	TS
X	YTWF	PAK	QBJ	UD	VX	EGC	RN	LO	SM	HI
Y	JXQE	ADY	FUH	IP	RN	SCB	VW	LK	GT	MO

**NAVAIDS**

<b>Id</b>	<b>Name</b>	<b>Channel</b>	<b>Position</b>	<b>Elevation</b>
BCE	Bryce Canyon	75	N3741.35 W11218.23	9040
BIH	Bishop	33	N3722.62 W11821.99	4114
BLD	Boulder	114	N3559.75 W11451.82	3650
BTY	Beatty	94	N3648.54 W11644.86	2925
CDC	Cedar City	120	N3747.24 W11304.90	5463
DAG	Daggett	79	N3457.75 W11634.69	1760
EED	Needles	99	N3445.96 W11428.43	650
GFS	Goffs	91	N3507.87 W11510.59	4019
GRL	Groom Lake	18	N3713.91 W11548.16	4475
HEC	Hector	74	N3447.83 W11627.78	1854
ILC	Wilson Creek	110	N3815.02 W11423.65	9318
INS	Creech AFB	87	N3635.20 W11540.12	3101
LAS	McCarran Intl	116	N3604.78 W11509.59	2142
LSV	Nellis	12	N3614.68 W11501.50	1864
MLF	Milford	58	N3821.62 W11300.79	4977
MMM	Mormon Mesa	90	N3646.16 W11416.65	2120
MVA	Mina	98	N3833.92 W11801.97	7860
OAL	Coale Dale	124	N3800.20 W11746.23	4800
PGS	Peach Springs	57	N3537.48 W11332.67	4754
TPH	Tonopah Muni	119	N3801.84 W11702.01	5330
TQQ	Silverbow	77	N3748.00 W11647.00	5500
UTI	St George	23	N3705.29 W11335.53	2871



PAR	RWY	CAT	MINIMA	ARP	ELEV	Scale
	21L	A B D E	2057 - 0.8 200 (200-0.8/1.6) GS 3°	36° 14.060° N	1857 [ft]	0 300 500
	3R	A B D E	2057 - 0.8 200 (200-0.8/1.6) GS 3°	115° 01.058° W	566 [m]	0 300 600 900 1200 1500 [m]
SRA	21R	A C D E	2257 - 1.2 350 (350-1.2/1.6)			0 1000 2000 3000 4000 5000 [ft]
	3L	A C D E	2257 - 1.2 350 (350-1.2/1.6)			

RWY	TORA	TODA	ASDA	LDA	PSN	THR	ALS
21L	10051 [ft] 3063 [m]	11051 [ft] 3368 [m]	11051 [ft] 3368 [m]	10051 [ft] 3063 [m]	36°14.043' N	115°01.018' W	⊕
3R	10120 [ft] 3084 [m]	11120 [ft] 3398 [m]	11120 [ft] 3398 [m]	10120 [ft] 3084 [m]	36°13.029' N	115°02.038' W	

ATIS	NELLIS GROUND	NELLIS TOWER	NELLIS CONTROL	TACAN	ILS RWY 21L	NELLIS EAST	NELLIS WEST
270.100 MHz	275.800   121.800	327.000   132.55	317.525	LSV 12X	109.10 Mhz	384.400	385.000



# FYTTR LOW VISUAL OPERATION CHART | VALID 2014

ATIS  
270.100  
NELLIS GROUND  
275.800  
NELLIS TOWER  
327.000  
NELLIS CONTROL  
317.525  
NELLIS DEP/APP EAST  
384.400  
BLACKJACK  
377.800

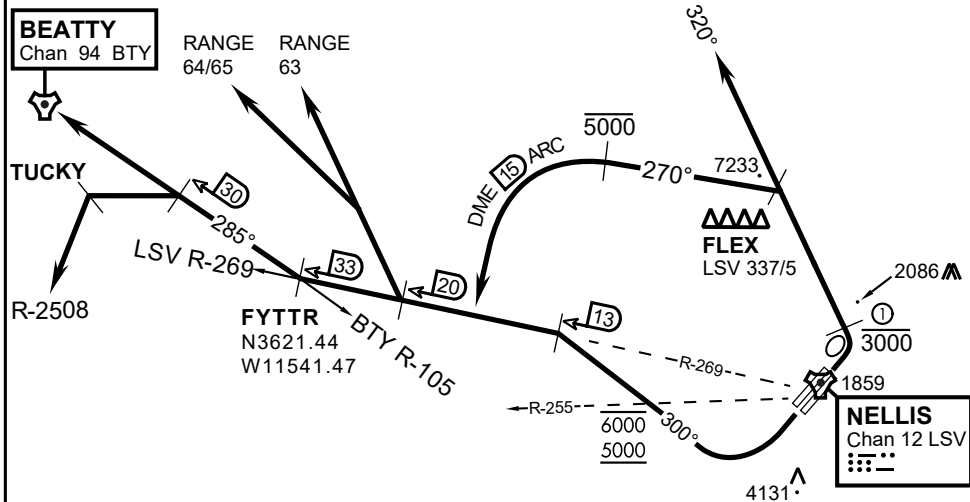
CAUTION: If unable to comply with restrictions advise ATC prior to departure.



## VMC ONLY

### PILOT RESPONSIBLE FOR TERRAIN AVOIDANCE

① 4 NM from RWY 3L/R



### DEPARTURE ROUTE DESCRIPTION

#### TAKEOFF RWY 3L/R:

- Remain below 3,000' MSL until north of Race Track and turned westbound.
- Turn left within 4NM of Nellis direct FLEX. Fly north of FLEX and turn left heading 270°.
- Intercept LSV 15 DME ARC at or below 5,000' MSL.
- ARC south, intercept LSV R-269 outbound. Maintain VFR.

#### TAKEOFF RWY 21L/21R:

- Follow Noise Abatement Procedures.
- Fly runway heading until past Golf Course, turn right heading 300°.
- Cross LSV R-255 between 5,000' and 6,000' , intercept and proceed outbound on the LSV R-269.Recommend climb to 8,500' MSL or appropriate VFR altitude for overflight of North Las Vegas Training Area. Fly routing for appr. mission/transition.

#### TRANSITIONS:

- R-4806:** Turn right at the LSV 269/20 direct to assigned ranges.
- BEATTY:** Turn right at FYTTR direct BTY via the BTY R-105
- R-2508:** Turn right at the FYTTR, intercept the BTY 105/30, direct TUCKY, then direct R-2508

### FYTTR DEPARTURE AND TRANSITIONS (FYTTR LOW)

# HI-TACAN Y RWY 21L

TACAN LSV Chan 12	APCH CRS 210°	Rwy ldg 21L TDZE 10,051 1865 Arprt Elev 1869	Rwy ldg 21R TDZE 10,120 1869
-------------------	---------------	---	------------------------------

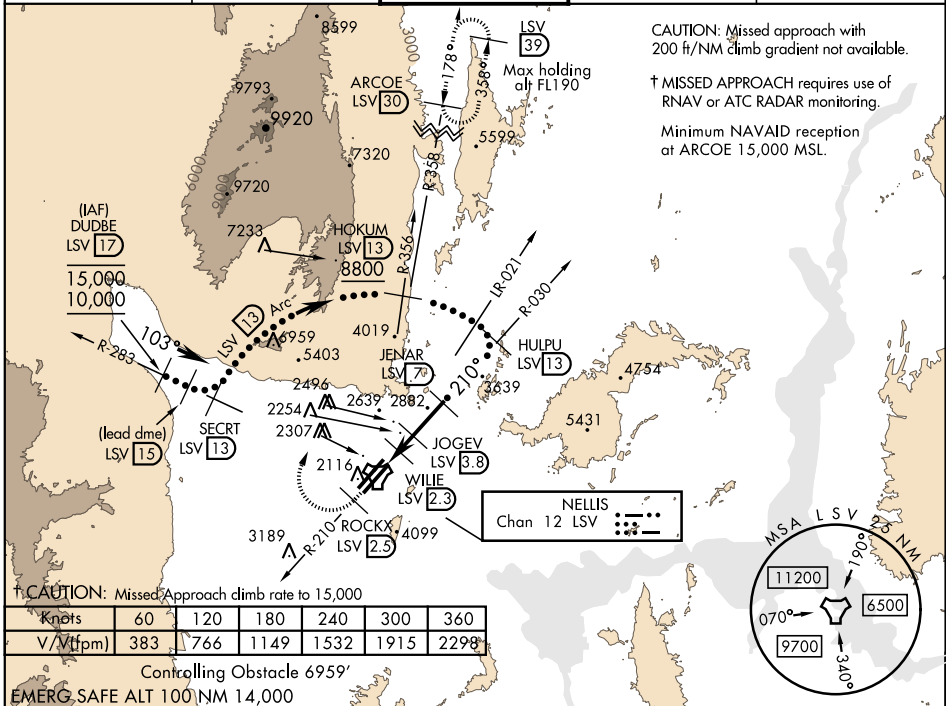
JAL-227 [USAF] NELLIS AFB (KLSV)

\* When ALS inop, increase CAT CDE vis to 1 3/4 miles.  
 \*\* Circling not authorized E of Rwy 3R-21L.



† MISSED APPROACH: Climb to 15,000, intercept LSV TACAN R-210 to 2.5 DME (ROCKX), then climbing right turn heading 020° to join LSV R-358 to ARCOE and hold, continue climb in hold to 15,000. Missed approach not for civil use.

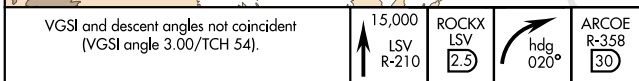
ATIS 270.1	NELLIS APP CON 124.95 273.55	NELLIS TOWER 132.55 327.0	GND CON 121.8 275.8	CLNC DEL 120.9 289.4
------------	------------------------------	---------------------------	---------------------	----------------------



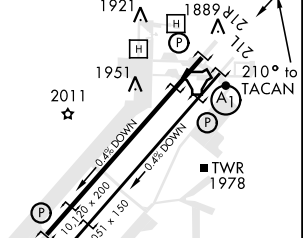
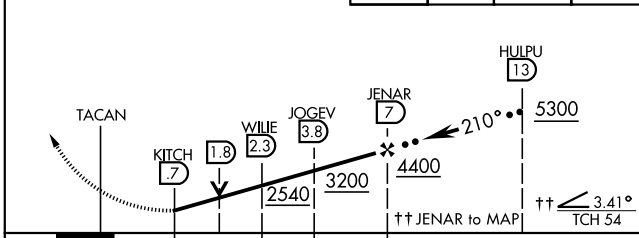
† CAUTION: Missed Approach climb rate to 15,000

Knots	60	120	180	240	300	360
V/Vt (fpm)	383	766	1149	1532	1915	2298

Controlling Obstacle 6959'  
EMERG. SAFE ALT 100 NM 14,000



ELEV 1869	TDZE 21L 1865	TDZE 21R 1869
-----------	---------------	---------------



CATEGORY	C	D	E
S-21L *	2460-1 1/4	595 (600-1 1/4)	
SIDESTEP 21R	2460-1	591 (600-1)	
CIRCLING **	2620-2 1/4 751 (800-2 1/4)	2840-3 971 (1000-3)	3040-3 1171 (1200-3)

HIRL all Rwy

# HI-TACAN Y RWY 21L

SW-4, 05 DEC 2019 to 02 JAN 2020

SW-4, 05 DEC 2019 to 02 JAN 2020



INDIAN SPRINGS, NEVADA

TACAN INS Chan 87	APCH CRS 294 °	Rwy Idg TDZE Arprt Elev	9002 3133 3113
----------------------	-------------------	-------------------------------	----------------------

INDIAN SPRINGS AF AUX (KINS)

**▽** \* MISSED APPROACH: Direct INS then outbound INS **t8:2#DME** climbing to 10,000.

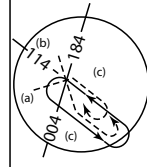
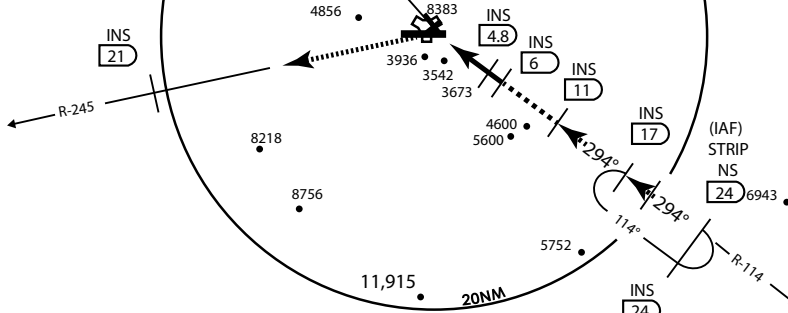
NELLIS CON -	<b>INDIAN SPRINGS TOWER</b> 118.30 <b>660.60</b>	GND CON -
-----------------	---	--------------

**NOT FOR CIVIL USE**

5975 •

**CAUTION:** Final approach course does not cross Runway centerline prior to threshold. Maneuvering right of course required prior to landing.

CREECH AFB  
Chan 87 INS



Modified by vJaBoG 66 for use with DCS

Modified by vJaBoG 66 for use with DCS

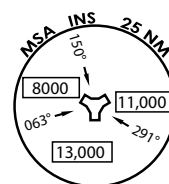
NOT FOR REAL LIFE NAVIGATION

NOT FOR REAL LIFE NAVIGATION

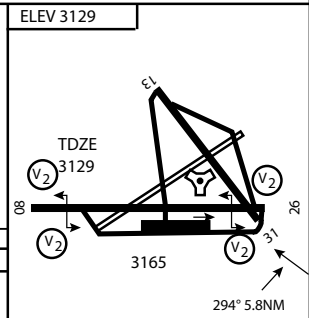
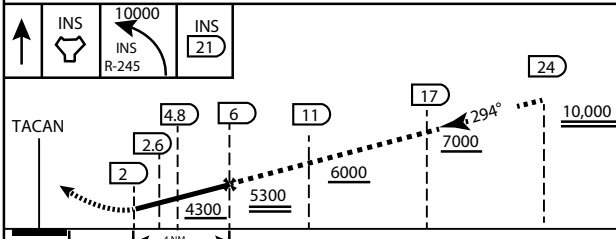
\* CAUTION: Missed Approach Climb Rate to 4,700

Knots	60	120	180	240	300	360
V/V (fpm)	450	900	1350	1800	2250	2700

Controlling Obstacle 3936



EMERG SAFE ALT 100 NM 14,000



CATEGORY	A	B	C	D	E
S-26	3800-2 ¼	697 (700 2 ½)			3800-2 ¼ 697 (700-2 ½)
CIRCLING	NOT AUTHORIZED				

MIRL Rwy 8-26 **0**

CITY OF INDIAN, NEVADA

INDIAN SPRINGS AF AUX (KINS)



