

**MISSION DATA CARD**

OPORD		Callsign		Mission		Date/Time		
3570/2025		Monster 4		Training		232000JAN25		
Task	SAM Defense					Freq		
AO						132.15		
Departure				Recovery				
FYTTR LOW				STRYK				
#	Callsign		Pilot		IFF	TCN	LSR	NET
-1	Monster 4-1		Lenzi		1551	1Y	1551	25/01
-2	Monster 4-2		addiks		1552	64Y	1552	25/02

**LOADOUT**

A/A	2xA9M				GUN	100% CM	
A/G	7M282L				CHF	180	
POD	A184L, TGP				FLR	300	
TKS					FUEL	100%	

**TOLD**

	Takeoff	Target	Joker	Bingo	Land
FUEL	11087				

**AIRBASES**

	Name	TCN	ATIS	GND	TWR	RWY	Elev	ILS
Dep	Nellis AFB	12X	270.1	275.8	327.0	21L	1850	109.1
Arr	Nellis AFB	12X	270.1	275.8	327.0	21L	1850	109.1
Div	Creech AFB	87X	290.45	275.8	360.6			

**FLIGHTPLAN**

#	Name	Navaid/Coords/DME	ALT	TOT
1	Nellis	N36 14.680 W115 01.500		
2	FLEX	LSV 337/5 (N36 18.620 W115 02.360)		
3	FYTTR	LSV 269/33 (N36 21.440 W115 41.470)	12000	
4	T64.12	N36 55.079 W115 38.267	12000	
5	STRYK	LSV 282/26 (N36 25.620 W115 30.700)	9500	
6	GASS PEAK	LSV 309/12 (N36 24.140 W115 10.660)	8500	
7	SIMNS	LSV 276/8 (N36 17.340 W115 10.750)	5500	
8	CRAIG	LSV 263/5.5 (N36 15.250 W115 08.270)	5000	
9	APEX	LSV 027/09 (N36 21.580 W114 54.340)	4500	
10	Nellis	N36 14.680 W115 01.500		

**COMMS**

Radio	Usage
1	132.15
2	11-3-4-16-11-4-3
3	32.00

## NOTES

### SAM Defense

Heute wird zurück geschossen und zwar gegen uns.

Wir fliegen über FYTTR Low raus in die Range T64.12

Dort gehen wir gestaffelt ins Holding und es geht dann einzeln Richtung Groom Lake in die WEZ.

Dort auf Sam Beschuss achten.

Die Launch-Side visuell erfassen, mittels Break-

Turn die Launch-Side auf die 3/9 Uhr Position bringen.

Dann mit Chaff/Flare Break-Turn oder Split-S

oder durch Notching die Bedrohung eliminieren.

Gelände als Deckung nutzen. Alles ist erlaubt.

Danach zurück ins Holding und der nächste Pilot beginnt seinen Anflug in die WEZ.

Wir machen jeweils zwei Anflüge.

Der 1. Anflug aus 12000 Fuss,

der 2. Anflug low Level.

## OTHER FLIGHTS

Callsign	Mission	Airframe	Freq	TCN	Grpld	Laser
Nazgul 6	Training	4x F-15E	262.45	1/64		156X
AO	Range 66	Task	CAS Training FAC (A)			
Edelweiss 6	Training	1x F/A-18C	134.65	1/64	40	166X
AO	RANGE 64C	Task				
Tiger 1	Training	4x F/A-18C	261.15	1/64	1	155X
AO	R71S	Task	SEAD			
Edelweiss	Training	2x Ground	264.05	1/64		170X
AO		Task				
Rattler 1	Training	2x AH-64D	133.5	1/64	1	125X
AO		Task	Training			
Edelweiss 1	CAP	1x F-14B	264.15	1/64	1	171X
AO		Task				

**RADIO CHANNELS**

#	Freq	Name
1		Flight/Squadron specific
2	289.4	Nellis Clearance Delivery
3	275.8	Nellis Ground
4	327.0	Nellis Tower
5	385.4	Nellis Approach/Departure West
6	273.55	Nellis Approach/Departure East
7	317.525	Nellis Control -- Sally
8	254.4	Nellis Control-- Lee
9	305.6	SOF Bullseye
10	343.725	EMERGENCY SINGLE FRQ
11	270.1	Nellis ATIS
12	360.625	Creech AFB Tower
13	250.1	HAVE QUICK 13
14	251.1	HAVE QUICK 14
15	252.1	HAVE QUICK 15
16	377.8	Blackjack
17	265.0	KC-135 AR-641A
18	360.8	KC-135MPRS AR-635
19	319.8	KC-135MPRS AR-625
20	300.05	KC-135 AR-231V

**RAMROD**

0	1	2	3	4	5	6	7	8	9
C	H	A	M	P	I	O	N	E	D

**KTC 1400 C**

	0	1	2	3	4	5	6	7	8	9
A	BXVS	UTK	RAW	IM	GC	YOH	ED	FP	NJ	LQ
B	YQRU	PVJ	BKS	IO	FC	DWL	MG	XA	HT	EN
C	HDAK	WUC	EOI	GM	BS	NPJ	QV	XR	YF	TL
D	SDYR	QKT	OUG	FM	CX	BJE	IH	WA	NP	LV
E	MTAQ	PXS	CYN	BO	DW	KVR	IF	UG	HE	LJ
F	FOBP	GUA	CJI	VM	XW	END	QL	YK	HT	RS
G	QRWN	XGB	KHT	JD	VI	EUS	FO	LA	CP	MY
H	XCAP	MTS	NKI	FQ	UL	VJY	RG	OW	BD	HE
I	AMNS	EYC	RHG	XL	WK	FQD	JO	IB	TV	UP
J	WUSG	VIK	BJH	CR	EF	MNP	DQ	XY	AT	LO
K	XVWR	HCA	NQU	MI	BO	GPE	KD	YT	LF	JS
L	ORNG	FYK	PIC	BD	UX	EVT	JL	WA	MQ	HS
M	JRGT	OEA	LCK	HP	SX	MBN	VD	FU	YW	QI
N	ITNO	DWY	LVB	XS	UR	AQK	GF	PH	EJ	MC
O	OSXK	MWQ	GDB	LI	JA	FYN	TV	PU	HR	EC
P	AUBJ	DMX	PNW	SC	HY	IGF	VO	QK	LR	TE
Q	HCQG	WAN	KBI	MO	VR	YJS	UT	XL	FE	DP
R	SVYP	OMJ	QEW	AI	KD	NTH	RX	GF	UC	BL
S	BYFP	TCD	VKL	EX	RS	GMN	JO	UA	HI	QW
T	OKCY	JMV	QNT	AB	XL	WPD	RI	GE	SF	UH
U	YOGF	MQL	XEA	HI	PD	JKS	RW	BU	VT	NC
V	MGRU	APS	WNX	HK	BJ	QDC	FY	EI	LV	OT
W	NBXW	LCF	IGJ	VR	MU	DYH	EA	OK	PQ	TS
X	YTWf	PAK	QBJ	UD	VX	EGC	RN	LO	SM	HI
Y	JXQE	ADY	FUH	IP	RN	SCB	VW	LK	GT	MO

**NAVAIDS**

<b>Id</b>	<b>Name</b>	<b>Channel</b>	<b>Position</b>	<b>Elevation</b>
BCE	Bryce Canyon	75	N3741.35 W11218.23	9040
BIH	Bishop	33	N3722.62 W11821.99	4114
BLD	Boulder	114	N3559.75 W11451.82	3650
BTY	Beatty	94	N3648.54 W11644.86	2925
CDC	Cedar City	120	N3747.24 W11304.90	5463
DAG	Daggett	79	N3457.75 W11634.69	1760
EED	Needles	99	N3445.96 W11428.43	650
GFS	Goffs	91	N3507.87 W11510.59	4019
GRL	Groom Lake	18	N3713.91 W11548.16	4475
HEC	Hector	74	N3447.83 W11627.78	1854
ILC	Wilson Creek	110	N3815.02 W11423.65	9318
INS	Creech AFB	87	N3635.20 W11540.12	3101
LAS	McCarran Intl	116	N3604.78 W11509.59	2142
LSV	Nellis	12	N3614.68 W11501.50	1864
MLF	Milford	58	N3821.62 W11300.79	4977
MMM	Mormon Mesa	90	N3646.16 W11416.65	2120
MVA	Mina	98	N3833.92 W11801.97	7860
OAL	Coale Dale	124	N3800.20 W11746.23	4800
PGS	Peach Springs	57	N3537.48 W11332.67	4754
TPH	Tonopah Muni	119	N3801.84 W11702.01	5330
TQQ	Silverbow	77	N3748.00 W11647.00	5500
UTI	St George	23	N3705.29 W11335.53	2871



PAR	RWY	CAT	MINIMA	ARP	ELEV	Scale 1:35'500 0 300 600 900 1200 1500 [m] 0 1000 2000 3000 4000 5000 [ft]
SRA	21L 3R 21R 3L	A B D E A B D E A C D E A C D E	2057 - 0.8 200 (200-0.8/1.6) GS 3° 2057 - 0.8 200 (200-0.8/1.6) GS 3° 2257 - 1.2 350 (350-1.2/1.6) 2257 - 1.2 350 (350-1.2/1.6)	36° 14.060° N 115° 01.058° W	1857 [ft] 566 [m]	

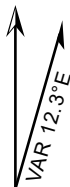
RWY	TORA	TODA	ASDA	LDA	PSN	THR	ALS
21L	10051 [ft] 3063 [m]	11051 [ft] 3368 [m]	11051 [ft] 3368 [m]	10051 [ft] 3063 [m]	36°14.043' N	115°01.018' W	⊕
3R	10120 [ft] 3084 [m]	11120 [ft] 3398 [m]	11120 [ft] 3398 [m]	10120 [ft] 3084 [m]	36°13.029' N	115°02.038' W	

ATIS	NELLIS GROUND	NELLIS TOWER	NELLIS CONTROL	TACAN	ILS RWY 21L	NELLIS EAST	NELLIS WEST
270.100 MHz	275.800   121.800	327.000   132.55	317.525	LSV 12X	109.10 Mhz	384.400	385.000



ATIS  
270.100  
NELLIS GROUND  
275.800  
NELLIS TOWER  
327.000  
NELLIS CONTROL  
317.525  
NELLIS DEP/APP EAST  
384.400  
BLACKJACK  
377.800

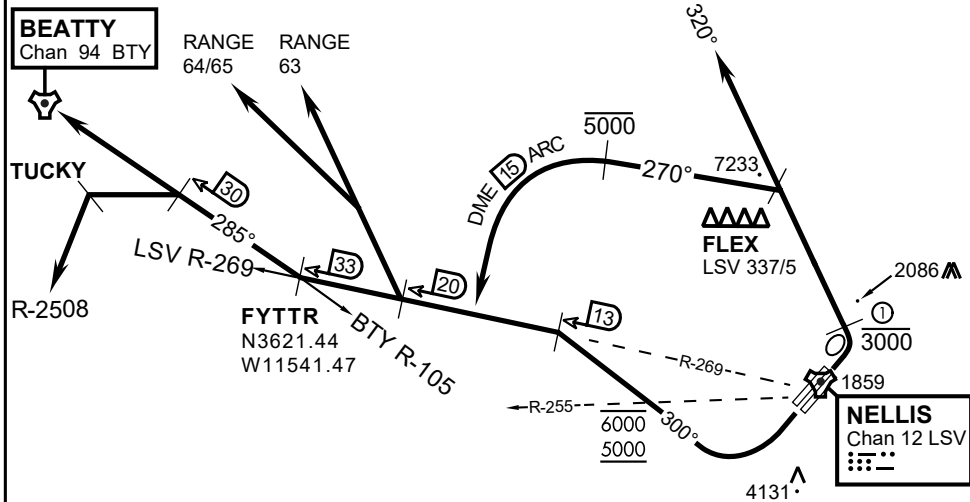
CAUTION: If unable to comply  
with restrictions advise ATC  
prior to departure.



# VMC ONLY

## PILOT RESPONSIBLE FOR TERRAIN AVOIDANCE

① 4 NM from RWY 3L/R



### DEPARTURE ROUTE DESCRIPTION

#### TAKEOFF RWY 3L/R:

- Remain below 3,000' MSL until north of Race Track and turned westbound.
- Turn left within 4NM of Nellis direct FLEX. Fly north of FLEX and turn left heading 270°.
- Intercept LSV 15 DME ARC at or below 5,000' MSL.
- ARC south, intercept LSV R-269 outbound. Maintain VFR.

#### TAKEOFF RWY 21L/21R:

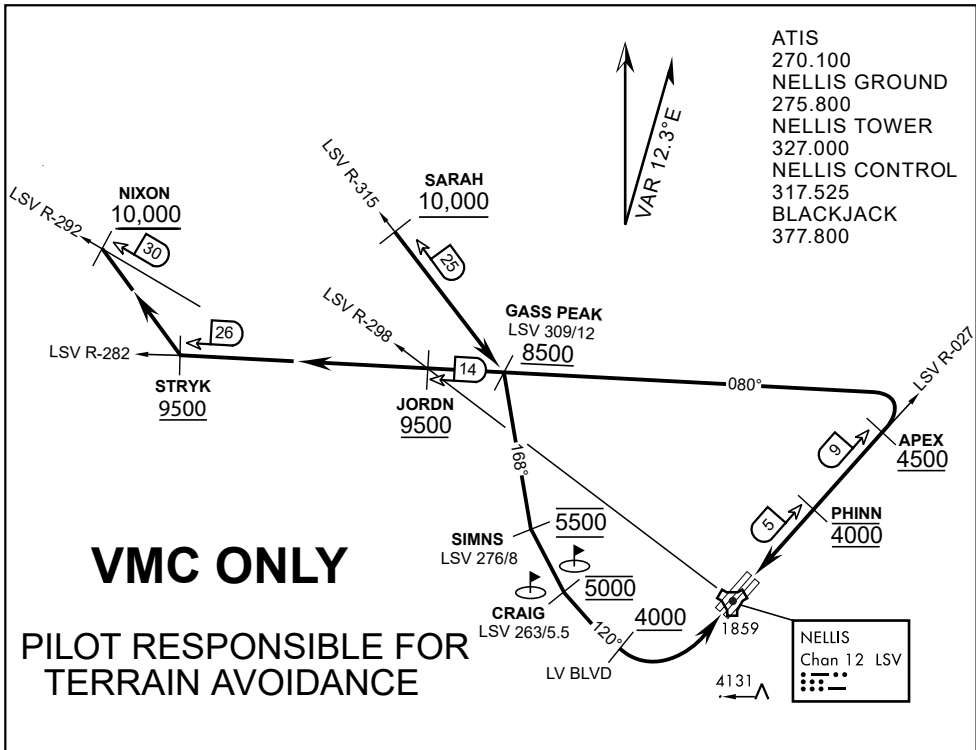
- Follow Noise Abatement Procedures.
- Fly runway heading until past Golf Course, turn right heading 300°.
- Cross LSV R-255 between 5,000' and 6,000' , intercept and proceed outbound on the LSV R-269.Recommend climb to 8,500' MSL or appropriate VFR altitude for overflight of North Las Vegas Training Area. Fly routing for appr. mission/transition.

#### TRANSITIONS:

- R-4806:** Turn right at the LSV 269/20 direct to assigned ranges.
- BEATTY:** Turn right at FYTTR direct BTY via the BTY R-105
- R-2508:** Turn right at the FYTTR, intercept the BTY 105/30, direct TUCKY, then direct R-2508

### FYTTR DEPARTURE AND TRANSITIONS (FYTTR LOW)

v.15 13NOV20 NTR NAV CHART



**APPROACH ROUTE DESCRIPTION**

**APPROACH RWY 3L/R**

Cross STRYK at or above 9,500' MSL, proceed direct GASS PEAK. Cross JORDN at or above 9,500' MSL, cross GASS PEAK at or above 8,500' MSL. Proceed direct SIMNS and cross at 5,500' MSL. Cross Las Vegas Blvd at or above 4,000' MSL then to 3,500' MSL for Initial. Remain within 4 DME if LSV on turn to final.

**VFR STRAIGHT-IN RWY 3L/R**

Depart CRAIG & descend to be at 3,000' MSL by Las Vegas Blvd. Do not descend below 3,000' MSL until within 5 DME of LSV or 4 NM of the runway on turn to final.

**APPROACH RWY 21L/R**

Cross STRYK at or above 9,500' MSL, proceed direct GASS PEAK. Cross JORDN at or above 9,500' MSL, cross GASS PEAK at or above 8,500' MSL. Cross APEX at or above 4,500' MSL then direct 5NM initial. Descend to cross PHINN at 4,000' MSL, Inside 5 NM descend to 3,500' MSL.

**VFR STRAIGHT-IN RWY 21L/R**

Cross APEX at 4,000' MSL. Descend to be at 3,000' MSL at PHINN. Descend to 3,000' MSL at LSV 027/5.

**RANGE 63B EXIT**

**SOUTH:** Via NIXON at or above 10,000' MSL, then direct STRYK.  
**EAST:** Via SARAH at or above 10,000' MSL, then direct GASS PEAK.



INDIAN SPRINGS, NEVADA

TACAN INS Chan 87	APCH CRS 065°	Rwy ldg TDZE 3133	9002 3113
		Arpt Elev 3113	

INDIAN SPRINGS AF AUX (KINS)

**▼** \* MISSED APPROACH: Straight ahead to INS TACAN, intercept INS R-outbound, cross 17 DME at or above 9500, then direkt KSV TACAN 114

NELLIS CON

CREECH AFB TOWER  
118.30 60.60

GND CON

**NOT FOR CIVIL USE**

FOR USE UNDER BASIC VFR  
WEATHER MINIMUMS ONLY

PILOT IS RESPONSIBLE FOR TERRAIN/OBSTACLE AVOIDANCE AND APPROPRIATE VFR CLOUD CLEARANCE FOR ALL

CAUTION: Descent gradients are greater than allowed under standard TERPS criteria and inbound course does not meet straight-in criteria

CAUTION: Final approach course crosses Runway centerline at MIDFIELD. Maneuvering left of course required prior to landing. Do not Maneuver farther north than the INS R- 258

Modified by viaBog 66 for use with DCS  
NOT FOR REAL LIFE NAVIGATION

Modified by viaBog 66 for use with DCS  
NOT FOR REAL LIFE NAVIGATION



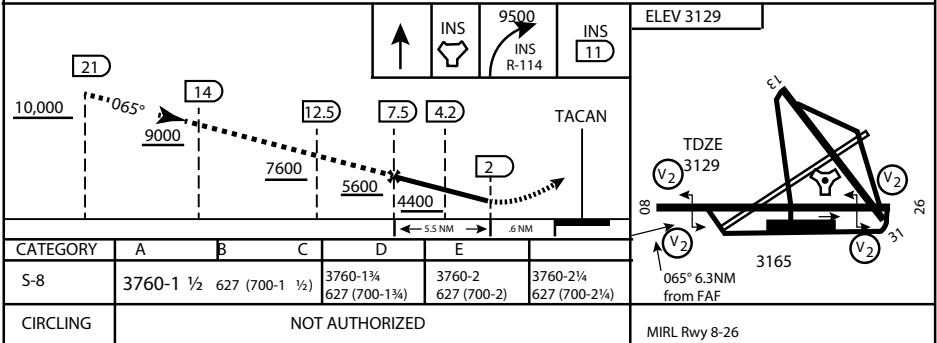
\* CAUTION: Missed Approach Climb Rate to 4,700

Knots	60	120	180	240	300
V/V (fpm)	230	460	690	920	1150

Controlling Obstacle

HIGH ALTITUDE FACILITIES

EMERG SAFE ALT 100 NM 14,000



CITY OF INDIAN, NEVADA

INDIAN SPRINGS AF AUX (KINS)

(FOR DAY VFR USE ONLY)



# AIRPORT DIAGRAM

ATIS  
122.5  
CREECH TOWER  
118.4 360.7 38.65  
GND CON  
118.3 275.8  
CLNC DEL

115°42'W

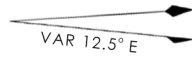
FIELD  
ELEV  
3127

80

972 X 150

HOT  
CARGO  
PAD

BAK-12



WEST  
EOR

115°41'W

476 vFG JAN 2019

CONTROL  
TOWER  
BASE  
OPS

RPA LOLA  
WEST

RPA LOLA  
EAST

LOLA /  
HUNG  
ORDNANCE

199 X 100  
ELEV  
3127  
RUNWAY  
31/13  
MQ/RQ-1  
ONLY

9002 X 150

258.5°

860 X 100  
313.8°

4064 X 100  
133.8°

BAK-12

ELEV  
3127

115°40'W

EAST  
EOR

1030 X 150

26

476 vFG JAN 2019

# AIRPORT DIAGRAM