

MISSION DATA CARD

OPORD		Callsign	Mission	Date/Time		
3568/2025		Edelweiss 1	Training	262000JAN25		
Task	IFR & AAR				Freq	
AO					134.5	
Departure			Recovery			
DREAM FOUR			ILS or LOC/DME Z RWY 21L			
#	Callsign	Pilot	IFF	TCN	LSR	NET
-1	Edelweiss 1-1	Snowbird	1711	1Y	1711	

LOADOUT

A/A	2xA120C, 2xA9X	GUN	100% HEI-T
A/G		CHF	120
POD		FLR	0
TKS	2xFT300	FUEL	100%

TOLD

	Takeoff	Target	Joker	Bingo	Land
FUEL	11169				

AIRBASES

	Name	TCN	ATIS	GND	TWR	RWY	Elev	ILS
Dep	Nellis AFB	12X	270.1	275.8	327.0	21L	1850	109.1
Arr	Nellis AFB	12X	270.1	275.8	327.0	21L	1850	109.1

FLIGHTPLAN

#	Name	Navaid/Coords/DME	ALT	TOT
1	1	N37 05 57.833 W115 59 59.370	15000	
2	2	N37 28 04.426 W115 59 59.370	15000	
3	3	N37 27 58.110 W115 35 03.158	15000	
4	4	N37 06 01.007 W115 35 03.158	15000	
5	Nellis AFB	N36 13 32 W115 02 37	1500	

SUPPORT**Tanker**

Callsign	TCN	Freq	ALT	TAS
TEXACO 2	95Y	289.7	FL220	420
Pos	Pegasus.1: CDC 166/102 (N3730 W11440)			

RADIO CHANNELS

#	Freq	Name
1		Flight/Squadron specific
2	289.4	Nellis Clearance Delivery
3	275.8	Nellis Ground
4	327.0	Nellis Tower
5	385.4	Nellis Approach/Departure West
6	273.55	Nellis Approach/Departure East
7	317.525	Nellis Control -- Sally
8	254.4	Nellis Control-- Lee
9	305.6	SOF Bullseye
10	343.725	EMERGENCY SINGLE FRQ
11	270.1	Nellis ATIS
12	360.625	Creech AFB Tower
13	250.1	HAVE QUICK 13
14	251.1	HAVE QUICK 14
15	252.1	HAVE QUICK 15
16	377.8	Blackjack
17	265.0	KC-135 AR-641A
18	360.8	KC-135MPRS AR-635
19	319.8	KC-135MPRS AR-625
20	300.05	KC-135 AR-231V

RAMROD

0	1	2	3	4	5	6	7	8	9
M	O	N	A	R	C	H	I	E	S

KTC 1400 C

	0	1	2	3	4	5	6	7	8	9
A	GMBU	RCJ	PNV	OW	HE	KDF	AL	TX	SY	QI
B	ERMC	FQD	UWA	YL	KH	IGB	OJ	PN	TS	XV
C	IVAD	SHN	EKG	MO	LP	CUY	TW	RF	BX	JQ
D	VABR	GHO	TJL	MU	EP	IDX	SK	YQ	FC	WN
E	HYIW	QTU	BCJ	OF	GL	XNP	EM	VA	KS	RD
F	JRWG	DVQ	SOX	BY	TP	HLK	UI	CA	MN	EF
G	QH NJ	KGC	PMS	IX	FE	UYW	TR	AB	VD	LO
H	SCIN	YDF	RBP	TL	GA	XHJ	WE	KQ	UV	OM
I	OYPU	QKX	MSF	IC	RH	GAV	DE	NW	JB	LT
J	KABU	XNP	TMD	SY	FQ	GLE	IV	OR	JC	HW
K	NTMC	KGS	EFX	YJ	PO	BAD	QH	UV	IL	WR
L	MUVY	PHC	WAT	ED	XG	SNL	IJ	RK	BO	FQ
M	NJDL	WIX	GRE	HM	BK	CPO	YA	FS	QU	VT
N	JYEN	MIX	COP	TB	FL	DSU	QW	AH	VR	GK
O	IEDX	BJP	RSU	FA	YT	VWL	KO	CN	QM	HG
P	CIOS	JTW	NHD	LK	EA	BMU	VF	XQ	PY	GR
Q	HBLJ	VUE	CRT	IX	FP	MWY	GK	QO	DN	SA
R	QUPJ	FEY	DHM	KV	WB	CGT	SN	AI	LX	OR
S	CHOW	TFM	XIS	ED	GB	AUV	JR	PN	KY	LQ
T	KIXA	RGD	OMP	TJ	VE	NYH	CW	SB	FL	UQ
U	HFPR	KOQ	YIN	BL	GX	JEV	TA	DW	MS	CU
V	TCKX	VQJ	BSL	AG	ON	MWY	FH	UD	ER	IP
W	ULTM	JXF	BGD	OA	RC	YPN	EH	WQ	SV	KI
X	OXAD	EPB	YFN	CV	WT	HIQ	SL	JK	MR	UG
Y	NXSP	JQB	RGV	WI	YL	HCK	MD	TA	FO	EU

NAVAIDS

Id	Name	Channel	Position	Elevation
BCE	Bryce Canyon	75	N3741.35 W11218.23	9040
BIH	Bishop	33	N3722.62 W11821.99	4114
BLD	Boulder	114	N3559.75 W11451.82	3650
BTY	Beatty	94	N3648.54 W11644.86	2925
CDC	Cedar City	120	N3747.24 W11304.90	5463
DAG	Daggett	79	N3457.75 W11634.69	1760
EED	Needles	99	N3445.96 W11428.43	650
GFS	Goffs	91	N3507.87 W11510.59	4019
GRL	Groom Lake	18	N3713.91 W11548.16	4475
HEC	Hector	74	N3447.83 W11627.78	1854
ILC	Wilson Creek	110	N3815.02 W11423.65	9318
INS	Creech AFB	87	N3635.20 W11540.12	3101
LAS	McCarran Intl	116	N3604.78 W11509.59	2142
LSV	Nellis	12	N3614.68 W11501.50	1864
MLF	Milford	58	N3821.62 W11300.79	4977
MMM	Mormon Mesa	90	N3646.16 W11416.65	2120
MVA	Mina	98	N3833.92 W11801.97	7860
OAL	Coale Dale	124	N3800.20 W11746.23	4800
PGS	Peach Springs	57	N3537.48 W11332.67	4754
TPH	Tonopah Muni	119	N3801.84 W11702.01	5330
TQQ	Silverbow	77	N3748.00 W11647.00	5500
UTI	St George	23	N3705.29 W11335.53	2871



RWY 3L-21R
 PCN 46 R/C/W/T
 RWY 3R-21L
 PCN 51 R/C/W/T
 2017

PAR	RWY	CAT	MINIMA		ARP	ELEV	Scale 1:35'500	
	21L	A B D E	2057 - 0.8 200	(200-0.8/1.6) GS 3°	36° 14.060° N 115° 01.058° W	1857 [ft] 566 [m]	0 300 600 900 1200 1500 [m]	
	3R	A B D E	2057 - 0.8 200	(200-0.8/1.6) GS 3°			0 1000 2000 3000 4000 5000 [ft]	
SRA	21R	A C D E	2257 - 1.2 350	(350-1.2/1.6)				
	3L	A C D E	2257 - 1.2 350	(350-1.2/1.6)				

RWY	TORA	TODA	ASDA	LDA	PSN	THR	ALS
21L	10051 [ft] 3063 [m]	11051 [ft] 3368 [m]	11051 [ft] 3368 [m]	10051 [ft] 3063 [m]	36°14.043' N	115°01.018' W	⊕
3R	10120 [ft] 3084 [m]	11120 [ft] 3398 [m]	11120 [ft] 3398 [m]	10120 [ft] 3084 [m]	36°13.029' N	115°02.038' W	

ATIS	NELLIS GROUND	NELLIS TOWER	NELLIS CONTROL	TACAN	ILS RWY 21L	NELLIS EAST	NELLIS WEST
270.100 MHz	275.800 121.800	327.000 132.55	317.525	LSV 12X	109.10 Mhz	384.400	385.000

DREAM FOUR DEPARTURE DREAM4 | VALID 2014

NELLIS AFB (KLSV)
LAS VEGAS, NEVADA

ATIS
270.100
NELLIS GROUND
275.800
NELLIS TOWER
327.000
NELLIS CONTROL
317.525
NELLIS DEP/APP EAST
384.400
BLACKJACK
377.800

DREAM
N3710.34
W11459.53

Rwy	Knots	60	120	180	240	300	360
* 3 L (A)	V/V(fpm)	269	538	807	1076	1345	1614
* 3 R (B)	V/V(fpm)	245	490	735	980	1225	1470
† 3 L (C)	V/V(fpm)	498	996	1494	1992	2490	2988
† 3 R (C)	V/V(fpm)	496	992	1488	1984	2480	2976
* 21 L (D)	V/V(fpm)	389	778	1167	1556	1945	2334
* 21 R (D)	V/V(fpm)	395	790	1185	1580	1975	2370
† 21 L (C)	V/V(fpm)	453	906	1359	1812	2265	2718
† 21 R (C)	V/V(fpm)	457	914	1371	1828	2285	2742

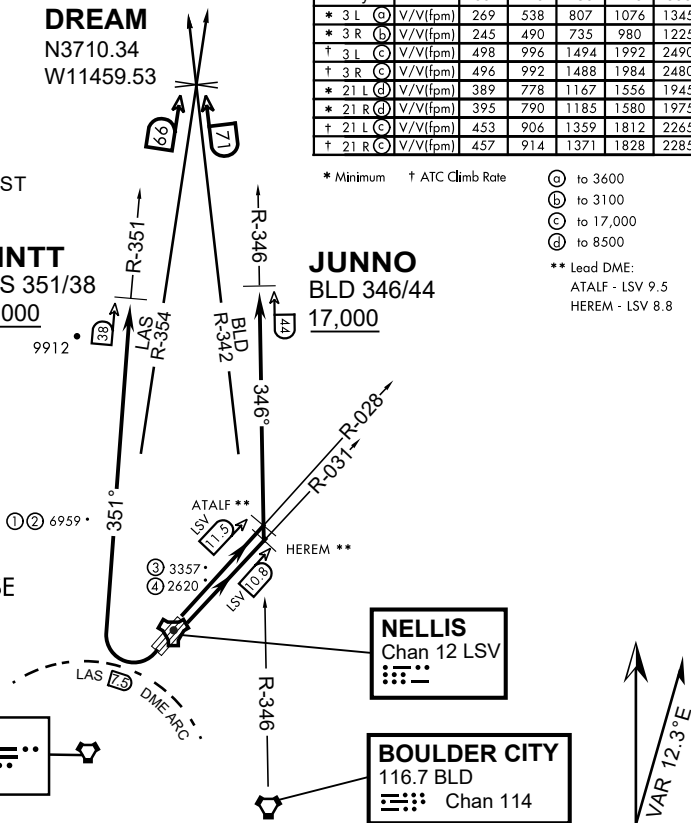
* Minimum † ATC Climb Rate

- (A) to 3600
 - (B) to 3100
 - (C) to 17,000
 - (D) to 8500
- ** Lead DME:
ATALF - LSV 9.5
HEREM - LSV 8.8

MINTT
LAS 351/38
17,000

JUNNO
BLD 346/44
17,000

- ① 12.24 NM from Rwy 21R
- ② 12.40 NM from Rwy 21L
- ③ 5.67 NM from Rwy 3L
- ④ 5.85 NM from Rwy 3R



NOT FOR CIVIL USE

CAUTION: If unable to comply with restrictions advise ATC prior to departure.

DEPARTURE ROUTE DESCRIPTION

TAKE-OFF RWY 3L

- Fly runway heading to intercept the LSV TACAN R-028 then direct ATALF, intercept the BLD VORTAC R-346 then direct JUNNO, cross JUNNO at or above 17,000, then via assigned route.

TAKE-OFF RWY 3R

- Fly runway heading to intercept the LSV TACAN R-031 then direct HEREM, intercept the BLD VORTAC R-346 then direct JUNNO, cross JUNNO at or above 17,000, then via assigned route.

TAKE-OFF RWY 21L/R

- Turn right to intercept LAS VORTAC R-351 outbound. Remain North of LAS 7.5 DME turning Northbound. Intercept LAS R-351 between 5000 and 6000, do not proceed West of LAS R-351. Cross MINTT at or above 17,000, then via assigned route.

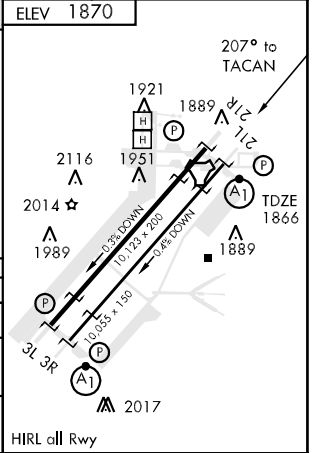
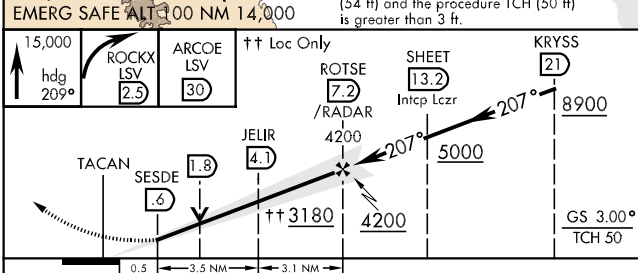
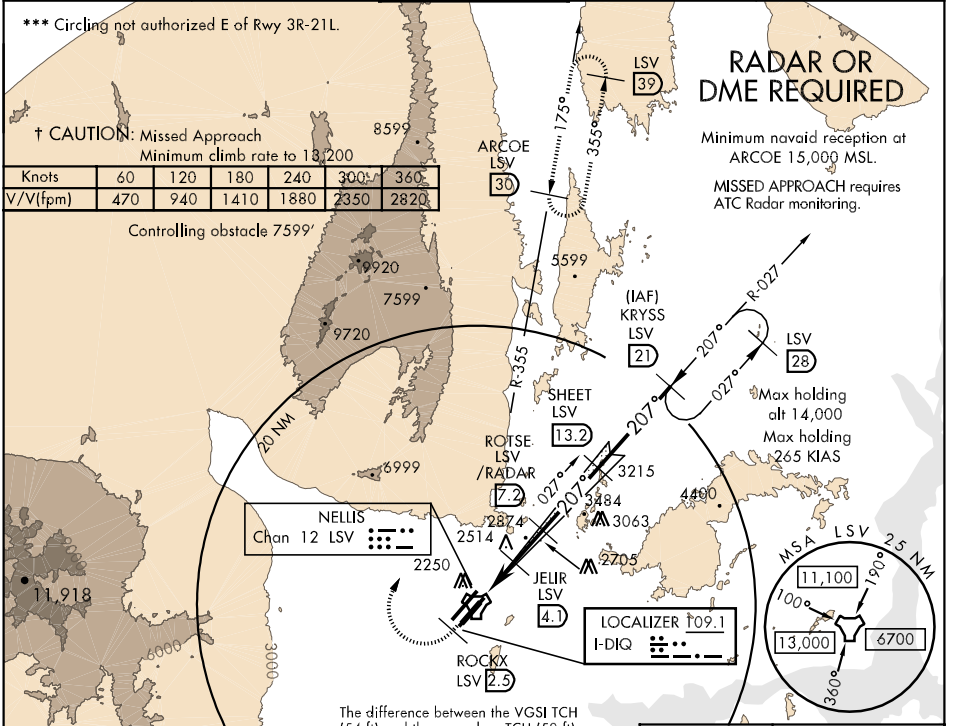
NOISE ABATMENT PROCEDURES: Fly acc. Nellis Noise Abatement instructions

DREAM FOUR DEPARTURE (DREAM4 • DREAM)

ILS or LOC/DME Z RWY 21L

LOC I-DIQ 109.1	APCH CRS 207°	Rwy Idg 10,055 TDZE 1866 Arpt Elev 1870	AL-227 [USAF]	NELLIS AFB (KLSV)
<p>▼ * When ALS inop, increase CAT ABCDE RVR to 40, vis to 3/4 mile. ** When ALS inop, increase CAT AB RVR to 50, vis to 1 mile, CAT C vis to 1 1/2 miles, CAT D vis to 1 3/4 miles, CAT E vis to 2 miles.</p>			<p>ALSF-1 </p>	<p>† MISSED APPROACH: Climb to 15,000, heading 209° to 2.5 DME (ROCKX), then climbing right turn heading 020° to join LSV TACAN R-355 to ARCOE and hold, continue climb in hold to 15,000.</p>

ATIS 270.1	NELLIS APP CON 124.95 273.55	NELLIS TOWER 132.55 327.0	GND CON 121.8 275.8	CLNC DEL 120.9 289.4
-----------------------------	---	--	--------------------------------------	---------------------------------------



CATEGORY	A	B	C	D	E
S-ILS 21L *	2066/24		200	(200-1/2)	
S-LOC 21L **	2440/24 574 (600-1/2)		2440/50 574 (600-1)	2440/60 574 (600-1 1/4)	2440-1 1/2 574 (600-1 1/2)
CIRCLING ***	2480-1 610 (700-1)	2680-1 1/4 810 (900-1 1/4)	2680-2 1/4 810 (900-2 1/4)	2680-2 1/2 810 (900-2 1/2)	2940-3 1070 (1100-3)

ILS or LOC/DME Z RWY 21L

SW-4, 23 SEP 2010 to 21 OCT 2010

SW-4, 23 SEP 2010 to 21 OCT 2010