

MISSION DATA CARD

| | | | | | | | | |
|----------------|-------------|-----------|------------------|----------------|------|-------------|------|-----|
| OPORD | | Callsign | | Mission | | Date/Time | | |
| 3565/2025 | | Rattler 5 | | Training | | 202000JAN25 | | |
| Task | | | | | | Freq | | |
| AO | | | | | | 133.5 | | |
| Departure | | | | Recovery | | | | |
| HELICOPTER DEP | | | | HELICOPTER ARR | | | | |
| # | Callsign | | Pilot | | IFF | TCN | LSR | NET |
| -1 | Rattler 5-1 | | Hudson/Laud | | 4651 | 1Y | 1711 | |
| -2 | Rattler 5-2 | | Remotex/Warblade | | 4652 | 64Y | 1712 | |

LOADOUT

| | | | | | | | |
|-----|----------------------|--|--|--|--|------|----------|
| A/A | | | | | | GUN | 25% HEDP |
| A/G | 4xAGM114K, 4xAGM114L | | | | | CHF | 30 |
| POD | | | | | | FLR | 60 |
| TKS | | | | | | FUEL | 100% |

TOLD

| | | | | | |
|------|---------|--------|-------|-------|------|
| | Takeoff | Target | Joker | Bingo | Land |
| FUEL | 2513 | | | | |

AIRBASES

| | | | | | | | | |
|-----|------------|-----|-------|-------|-------|-----|------|-------|
| | Name | TCN | ATIS | GND | TWR | RWY | Elev | ILS |
| Dep | Nellis AFB | 12X | 270.1 | 275.8 | 327.0 | 21L | 1850 | 109.1 |
| Arr | Nellis AFB | 12X | 270.1 | 275.8 | 327.0 | 21L | 1850 | 109.1 |

FLIGHTPLAN

| # | Name | Navaid/Coords/DME | ALT | TOT |
|---|-----------|------------------------------------|-----|-----|
| 1 | SOUTH GAP | LSV 160/2.9 (N36 11.94 W115 00.40) | | |
| 2 | LATNC1 | N36 26 W115 24 | | |

COMMS

| Radio | Usage |
|-------|---------------|
| 1 | 133.5 |
| 2 | 270.1 / 327.0 |
| 3 | 35.35 |

OTHER FLIGHTS

| Callsign | Mission | Airframe | Freq | TCN | Grpld | Laser |
|-------------|----------|------------|---------------|------|-------|-------|
| Raptor 1 | Training | 4x F-16C | 134.0 | 1/64 | | 162X |
| AO | R64 | Task | Bomb Training | | | |
| Edelweiss 1 | Training | 4x F-16C | 134.5 | 1/64 | | 162X |
| AO | R64 | Task | Bomb Training | | | |
| Edelweiss 6 | Training | 1x F/A-18C | 134.65 | 1/64 | 40 | 166X |
| AO | R64 | Task | | | | |
| Tiger 1 | Training | 4x F/A-18C | 261.15 | 1/64 | | 155X |
| AO | R71S | Task | SEAD | | | |
| Panther 1 | Training | 4x F/A-18C | 261.35 | 1/64 | | 157X |
| AO | R71S | Task | Strike | | | |
| Joker* 1 | Training | 1x F/A-18C | 261.35 | 1/64 | | 157X |
| AO | R71S | Task | Strike | | | |

RADIO CHANNELS

| # | Freq | Name |
|----|---------|--------------------------------|
| 1 | | Flight/Squadron specific |
| 2 | 289.4 | Nellis Clearance Delivery |
| 3 | 275.8 | Nellis Ground |
| 4 | 327.0 | Nellis Tower |
| 5 | 385.4 | Nellis Approach/Departure West |
| 6 | 273.55 | Nellis Approach/Departure East |
| 7 | 317.525 | Nellis Control -- Sally |
| 8 | 254.4 | Nellis Control-- Lee |
| 9 | 305.6 | SOF Bullseye |
| 10 | 343.725 | EMERGENCY SINGLE FRQ |
| 11 | 270.1 | Nellis ATIS |
| 12 | 360.625 | Creech AFB Tower |
| 13 | 250.1 | HAVE QUICK 13 |
| 14 | 251.1 | HAVE QUICK 14 |
| 15 | 252.1 | HAVE QUICK 15 |
| 16 | 377.8 | Blackjack |
| 17 | 265.0 | KC-135 AR-641A |
| 18 | 360.8 | KC-135MPRS AR-635 |
| 19 | 319.8 | KC-135MPRS AR-625 |
| 20 | 300.05 | KC-135 AR-231V |

RAMROD

| | | | | | | | | | |
|---|---|---|---|---|---|---|---|---|---|
| 0 | 1 | 2 | 3 | 4 | 5 | 6 | 7 | 8 | 9 |
| U | N | W | O | R | K | A | B | L | E |

KTC 1400 C

| | 0 | 1 | 2 | 3 | 4 | 5 | 6 | 7 | 8 | 9 |
|---|-------|-----|-----|----|----|-----|----|----|----|----|
| A | DFVM | XBI | YNL | PJ | OH | USW | TA | GK | EQ | CR |
| B | UOHC | DFQ | KGV | RN | XW | STM | JP | IB | YA | EL |
| C | FCLV | MGO | NEQ | RK | TW | SJX | UH | BP | IA | DY |
| D | WFRH | YDX | JIN | VO | SG | ALP | UB | QE | CK | TM |
| E | KDEX | OFW | QPY | TV | AC | SRI | UN | GL | HM | JB |
| F | NO PQ | AYM | ITB | XH | GW | JSR | CV | UE | KF | DL |
| G | DCUE | OGI | QHX | RP | BL | VMN | TS | JY | KA | FW |
| H | PMHK | WQL | BCT | NF | JD | EUS | RV | YO | XG | IA |
| I | DMTS | NRI | OYB | PC | GQ | EWA | HV | XF | UJ | LK |
| J | MPEW | KLU | DXB | GN | HT | OAQ | FJ | YS | IC | VR |
| K | FVBH | LGK | PTC | YD | UW | IRJ | XQ | AM | SO | EN |
| L | QWUI | VYB | SGA | JM | HE | TFD | KL | RC | PO | XN |
| M | PMLQ | BKV | SFN | YE | TJ | UDO | HI | RG | XW | AC |
| N | IEGC | BNX | KAL | PH | SQ | JOV | YW | RU | TM | FD |
| O | TLAY | RQS | CWD | BJ | XO | HIV | NM | PU | EF | KG |
| P | LGDE | TVR | XUN | PI | JW | SCO | AK | QB | YH | FM |
| Q | AQVW | BXJ | CUS | NK | IF | LPO | TH | EY | RG | DM |
| R | XFLC | GAV | YEB | KN | QM | WSU | HP | RD | OT | IJ |
| S | WIQE | HMD | XVF | SK | PY | RAC | LJ | TG | OU | BN |
| T | OGNP | XWH | QSV | ER | TY | JFK | DA | MB | IC | LU |
| U | QWTI | FNV | CJO | RY | MG | XLU | AH | SK | BD | PE |
| V | NASD | XMW | HIO | FY | UB | VQT | KP | EC | LJ | RG |
| W | BSGL | TOX | RMU | WC | QJ | FYH | AD | VN | EP | KI |
| X | WROA | GVC | NQL | JY | EU | FKP | XI | MS | TH | DB |
| Y | HTVU | QCL | IDO | ES | XW | MYA | NG | PB | KR | JF |

NAVAIDS

| Id | Name | Channel | Position | Elevation |
|-----------|---------------|----------------|--------------------|------------------|
| BCE | Bryce Canyon | 75 | N3741.35 W11218.23 | 9040 |
| BIH | Bishop | 33 | N3722.62 W11821.99 | 4114 |
| BLD | Boulder | 114 | N3559.75 W11451.82 | 3650 |
| BTY | Beatty | 94 | N3648.54 W11644.86 | 2925 |
| CDC | Cedar City | 120 | N3747.24 W11304.90 | 5463 |
| DAG | Daggett | 79 | N3457.75 W11634.69 | 1760 |
| EED | Needles | 99 | N3445.96 W11428.43 | 650 |
| GFS | Goffs | 91 | N3507.87 W11510.59 | 4019 |
| GRL | Groom Lake | 18 | N3713.91 W11548.16 | 4475 |
| HEC | Hector | 74 | N3447.83 W11627.78 | 1854 |
| ILC | Wilson Creek | 110 | N3815.02 W11423.65 | 9318 |
| INS | Creech AFB | 87 | N3635.20 W11540.12 | 3101 |
| LAS | McCarran Intl | 116 | N3604.78 W11509.59 | 2142 |
| LSV | Nellis | 12 | N3614.68 W11501.50 | 1864 |
| MLF | Milford | 58 | N3821.62 W11300.79 | 4977 |
| MMM | Mormon Mesa | 90 | N3646.16 W11416.65 | 2120 |
| MVA | Mina | 98 | N3833.92 W11801.97 | 7860 |
| OAL | Coale Dale | 124 | N3800.20 W11746.23 | 4800 |
| PGS | Peach Springs | 57 | N3537.48 W11332.67 | 4754 |
| TPH | Tonopah Muni | 119 | N3801.84 W11702.01 | 5330 |
| TQQ | Silverbow | 77 | N3748.00 W11647.00 | 5500 |
| UTI | St George | 23 | N3705.29 W11335.53 | 2871 |



| PAR | RWY | CAT | MINIMA | ARP | ELEV | Scale |
|-----|-----|---------|------------------------------------|---------------------------------|----------------------|---------------------------------|
| | 21L | A B D E | 2057 - 0.8 200 (200-0.8/1.6) GS 3° | 36° 14.060° N 115° 01.058° W | 1857 [ft] 566 [m] | 0 300 500 |
| | 3R | A B D E | 2057 - 0.8 200 (200-0.8/1.6) GS 3° | | | 0 300 600 900 1200 1500 [m] |
| | 21R | A C D E | 2257 - 1.2 350 (350-1.2/1.6) | | | 0 1000 2000 3000 4000 5000 [ft] |
| | 3L | A C D E | 2257 - 1.2 350 (350-1.2/1.6) | | | |

| RWY | TORA | TODA | ASDA | LDA | PSN | THR | ALS |
|-----|---------------------|---------------------|---------------------|---------------------|--------------|---------------|-----|
| 21L | 10051 [ft] 3063 [m] | 11051 [ft] 3368 [m] | 11051 [ft] 3368 [m] | 10051 [ft] 3063 [m] | 36°14.043' N | 115°01.018' W | ⊕ |
| 3R | 10120 [ft] 3084 [m] | 11120 [ft] 3398 [m] | 11120 [ft] 3398 [m] | 10120 [ft] 3084 [m] | 36°13.029' N | 115°02.038' W | |
| | | | | | | | |
| | | | | | | | |

| ATIS | NELLIS GROUND | NELLIS TOWER | NELLIS CONTROL | TACAN | ILS RWY 21L | NELLIS EAST | NELLIS WEST |
|-------------|-------------------|------------------|----------------|---------|-------------|-------------|-------------|
| 270.100 MHz | 275.800 121.800 | 327.000 132.55 | 317.525 | LSV 12X | 109.10 Mhz | 384.400 | 385.000 |

HELICOPTER ARR/DEP VAD-CHART | VALID 2014

NELLIS AFB (KLSV)
LAS VEGAS, NEVADA

ATIS
270.100
NELLIS GROUND
275.800
NELLIS TOWER
327.000
BLACKJACK
377.800

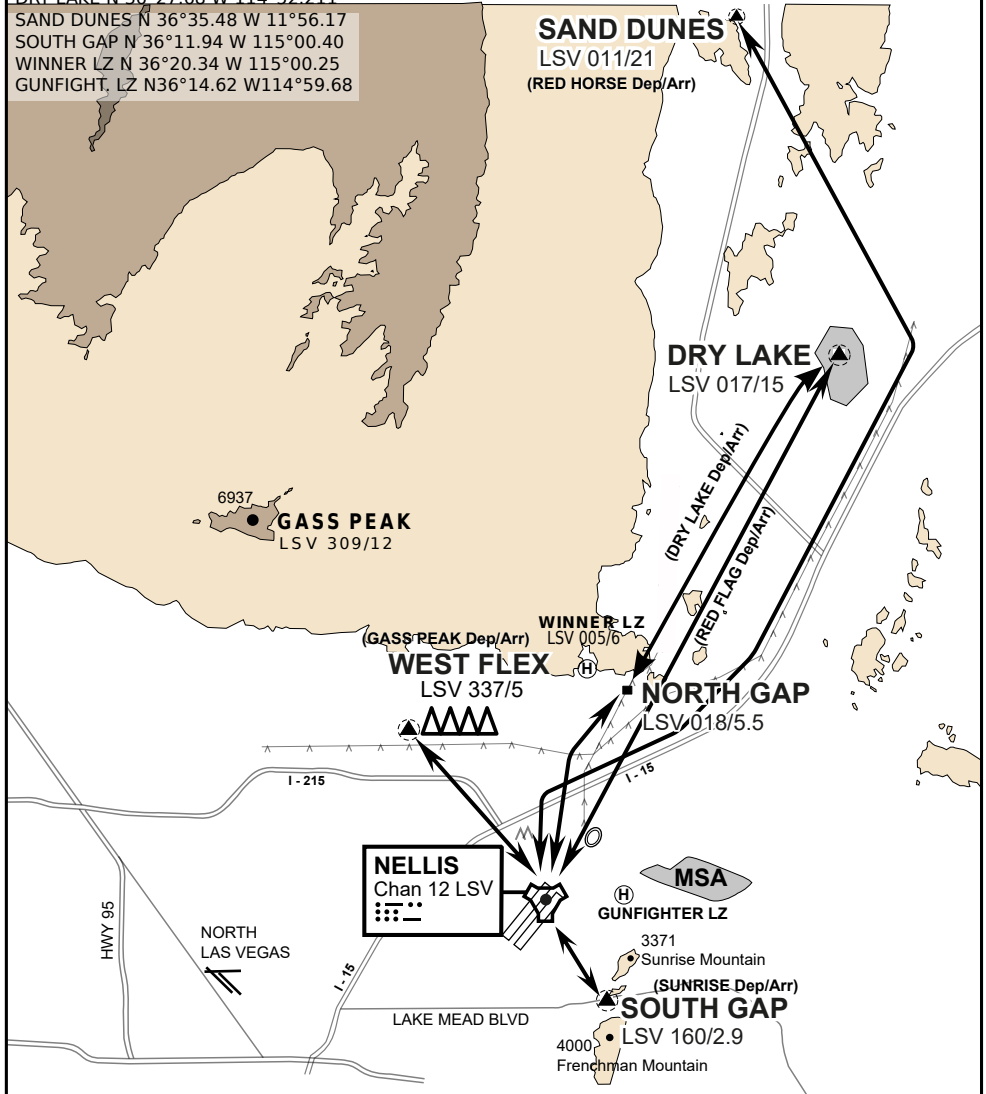
CAUTION: If unable to comply
with restrictions advise ATC
prior to departure.

VMC ONLY

if below WX Minima request SVFR



JOLLY PAD N 36°15.08 W 115°01.65
WEST FLEX N 36°18.64 W 115°08.00
NORTH GAP N 36°20.00 W 114°59.30
DRY LAKE N 36°27.68 W 114°52.211
SAND DUNES N 36°35.48 W 11°56.17
SOUTH GAP N 36°11.94 W 115°00.40
WINNER LZ N 36°20.34 W 115°00.25
GUNFIGHT, LZ N36°14.62 W114°59.68



vJABeG32NTRR NAV CHART

HELICOPTER ARRIVAL AND DEPARTURES ROUTES

v.110 22APR20

HELICOPTER ARR/DEP VAD-CHART | VALID 2014

NELLIS AFB (KLSV)
LAS VEGAS, NEVADA

ATIS
270.100
NELLIS GROUND
275.800
NELLIS TOWER
327.000
BLACKJACK
377.800

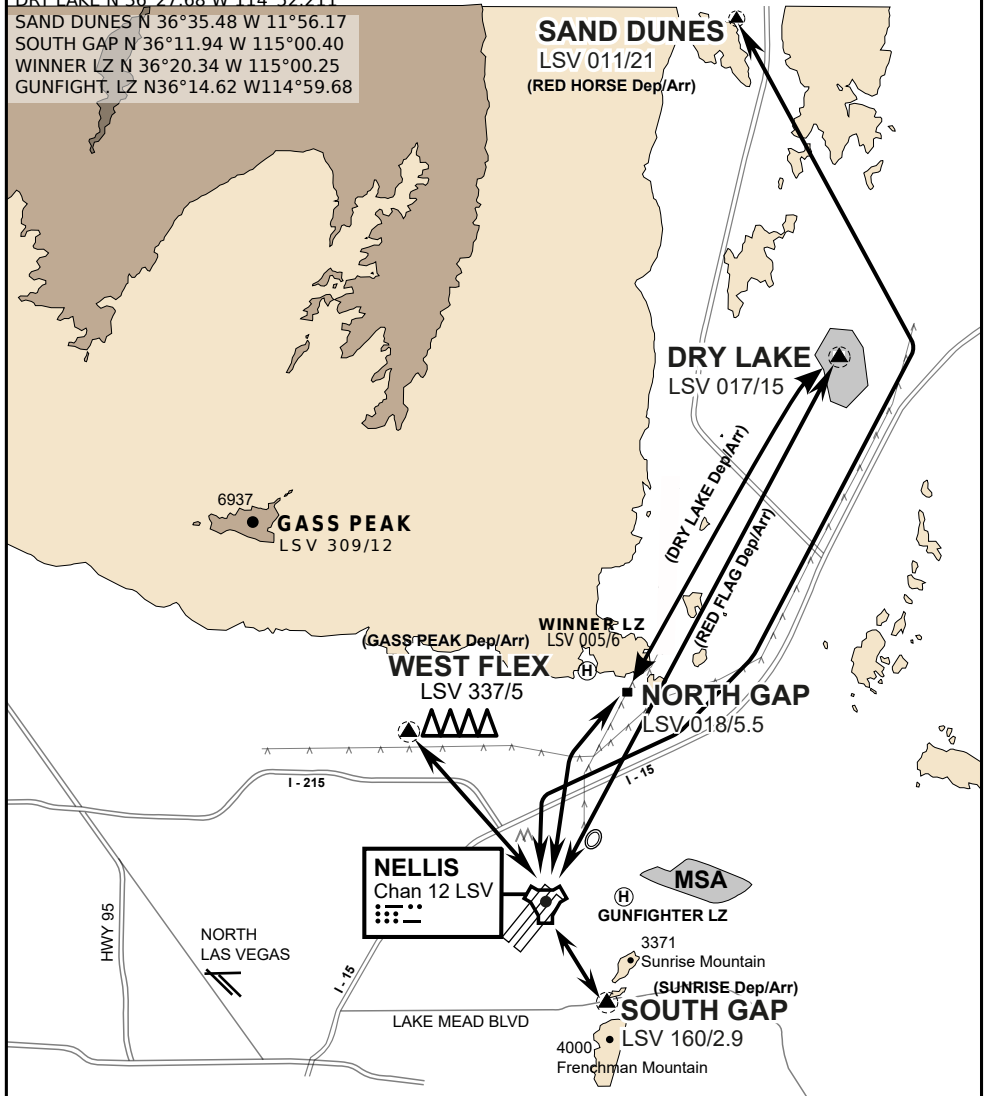
CAUTION: If unable to comply
with restrictions advise ATC
prior to departure.

VMC ONLY

if below WX Minima request SVFR



JOLLY PAD N 36°15.08 W 115°01.65
WEST FLEX N 36°18.64 W 115°08.00
NORTH GAP N 36°20.00 W 114°59.30
DRY LAKE N 36°27.68 W 114°52.211
SAND DUNES N 36°35.48 W 11°56.17
SOUTH GAP N 36°11.94 W 115°00.40
WINNER LZ N 36°20.34 W 115°00.25
GUNFIGHT, LZ N36°14.62 W114°59.68



vJABeG32NTRR NAV CHART

HELICOPTER ARRIVAL AND DEPARTURES ROUTES

v.110 22APR20