

MISSION DATA CARD

OPORD		Callsign		Mission		Date/Time	
3564/2025		Monster 4		Training		200000JAN25	
Task	UNG ROCKET TRAINING					Freq	
AO	R65C					132.15	
Departure				Recovery			
FYTTR LOW				STRYK			
#	Callsign	Pilot		IFF	TCN	LSR	NET
-1	Monster 4-1	Lenzi		1431	1Y	1611	21/01
-2	Monster 4-2	addiks		1432	64Y	1612	21/02

LOADOUT

A/A	C9M				GUN	100% CM	
A/G	13x7M151				CHF	120	
POD	A184L, TGP				FLR	360	
TKS					FUEL	80%	

TOLD

	Takeoff	Target	Joker	Bingo	Land
FUEL	8869				

AIRBASES

	Name	TCN	ATIS	GND	TWR	RWY	Elev	ILS
Dep	Nellis AFB	12X	270.1	275.8	327.0	21L	1850	109.1
Arr	Nellis AFB	12X	270.1	275.8	327.0	21L	1850	109.1

FLIGHTPLAN

#	Name	Navaid/Coords/DME	ALT	TOT
1	FLEX	LSV 337/5 (N36 18.620 W115 02.360)		
2	FYTTR	LSV 269/33 (N36 21.440 W115 41.470)	12000	
3	T65.01	N36 41.328 W115 47.685		
4	T65.03	N36 42.589 W115 46.126		
5	T65.05	N36 44.411 W115 44.792		
6	T65.08	N36 47.310 W115 44.793		
7	T65.06	N36 43.666 W115 48.167		
8	STRYK	LSV 282/26 (N36 25.620 W115 30.700)	9500	
9	GASS PEAK	LSV 309/12 (N36 24.140 W115 10.660)	8500	
10	APEX	LSV 027/09 (N36 21.580 W114 54.340)	4500	
11	SIMNS	LSV 276/8 (N36 17.340 W115 10.750)	5500	
12	CRAIG	LSV 263/5.5 (N36 15.250 W115 08.270)	5000	
13	Nellis	N36 14.680 W115 01.500		

COMMS

Radio	Usage
1	132.15
2	11-3-4-16-11-4-3
3	32.00

NOTES

CAUTION: Python-1 (4x F-16) Crossing R65 at 13.000ft !!!

STAY 12.000ft OR BELOW

Target Elevations: (Am besten Radio Altimeter verwenden)

65-01 : 3959 ft

65-02 : 3929 ft

65-03 : 4253 ft

65-04 : 4564 ft

65.05 : 4650 ft

65-06 : 4293 ft

65-07 : 4254 ft

65-08 : 4492 ft

65-10 : 4271 ft

Low Altitude Tactical Rocket (LATR)

Dive Angle von bis zu 20 Grad

Slant Range von 10.000 ft (1,7 NM). Minimum Altitude ist 1000ft.

3 LAR : 1.6nm Base: 700ft Track: 600ft Release: 500ft Abort: 250ft

6 LAR : 4.2nm Base: 5.0 Track: 4.6 Release: 4.0 Abort: 3.5

(Optional) Loft Rockets:

Slant Range von 10.000 ft. LR wird mit CCRP durchgeführt.

10LR : 8.0nm Base: 8.0 Track: 5.0 Release: 5.4 Abort: 6.0

(Optional 2): Tanken

SUPPORT**Tanker**

Callsign	TCN	Freq	ALT	TAS
TEXACO 1	94Y	265.0	17000	290
Pos	AR-641A: CDC 242/78 (N3728 W11439)			

RADIO CHANNELS

#	Freq	Name
1		Flight/Squadron specific
2	289.4	Nellis Clearance Delivery
3	275.8	Nellis Ground
4	327.0	Nellis Tower
5	385.4	Nellis Approach/Departure West
6	273.55	Nellis Approach/Departure East
7	317.525	Nellis Control -- Sally
8	254.4	Nellis Control-- Lee
9	305.6	SOF Bullseye
10	343.725	EMERGENCY SINGLE FRQ
11	270.1	Nellis ATIS
12	360.625	Creech AFB Tower
13	250.1	HAVE QUICK 13
14	251.1	HAVE QUICK 14
15	252.1	HAVE QUICK 15
16	377.8	Blackjack
17	265.0	KC-135 AR-641A
18	360.8	KC-135MPRS AR-635
19	319.8	KC-135MPRS AR-625
20	300.05	KC-135 AR-231V

RAMROD

0	1	2	3	4	5	6	7	8	9
U	N	W	O	R	K	A	B	L	E

KTC 1400 C

	0	1	2	3	4	5	6	7	8	9
A	DFVM	XBI	YNL	PJ	OH	USW	TA	GK	EQ	CR
B	UOHC	DFQ	KGV	RN	XW	STM	JP	IB	YA	EL
C	FCLV	MGO	NEQ	RK	TW	SJX	UH	BP	IA	DY
D	WFRH	YDX	JIN	VO	SG	ALP	UB	QE	CK	TM
E	KDEX	OFW	QPY	TV	AC	SRI	UN	GL	HM	JB
F	NO PQ	AYM	ITB	XH	GW	JSR	CV	UE	KF	DL
G	DCUE	OGI	QHX	RP	BL	VMN	TS	JY	KA	FW
H	PMHK	WQL	BCT	NF	JD	EUS	RV	YO	XG	IA
I	DMTS	NRI	OYB	PC	GQ	EWA	HV	XF	UJ	LK
J	MPEW	KLU	DXB	GN	HT	OAQ	FJ	YS	IC	VR
K	FVBH	LGK	PTC	YD	UW	IRJ	XQ	AM	SO	EN
L	QWUI	VYB	SGA	JM	HE	TFD	KL	RC	PO	XN
M	PMLQ	BKV	SFN	YE	TJ	UDO	HI	RG	XW	AC
N	IEGC	BNX	KAL	PH	SQ	JOV	YW	RU	TM	FD
O	TLAY	RQS	CWD	BJ	XO	HIV	NM	PU	EF	KG
P	LGDE	TVR	XUN	PI	JW	SCO	AK	QB	YH	FM
Q	AQVW	BXJ	CUS	NK	IF	LPO	TH	EY	RG	DM
R	XFLC	GAV	YEB	KN	QM	WSU	HP	RD	OT	IJ
S	WIQE	HMD	XVF	SK	PY	RAC	LJ	TG	OU	BN
T	OGNP	XWH	QSV	ER	TY	JFK	DA	MB	IC	LU
U	QWTI	FNV	CJO	RY	MG	XLU	AH	SK	BD	PE
V	NASD	XMW	HIO	FY	UB	VQT	KP	EC	LJ	RG
W	BSGL	TOX	RMU	WC	QJ	FYH	AD	VN	EP	KI
X	WROA	GVC	NQL	JY	EU	FKP	XI	MS	TH	DB
Y	HTVU	QCL	IDO	ES	XW	MYA	NG	PB	KR	JF

NAVAIDS

Id	Name	Channel	Position	Elevation
BCE	Bryce Canyon	75	N3741.35 W11218.23	9040
BIH	Bishop	33	N3722.62 W11821.99	4114
BLD	Boulder	114	N3559.75 W11451.82	3650
BTY	Beatty	94	N3648.54 W11644.86	2925
CDC	Cedar City	120	N3747.24 W11304.90	5463
DAG	Daggett	79	N3457.75 W11634.69	1760
EED	Needles	99	N3445.96 W11428.43	650
GFS	Goffs	91	N3507.87 W11510.59	4019
GRL	Groom Lake	18	N3713.91 W11548.16	4475
HEC	Hector	74	N3447.83 W11627.78	1854
ILC	Wilson Creek	110	N3815.02 W11423.65	9318
INS	Creech AFB	87	N3635.20 W11540.12	3101
LAS	McCarran Intl	116	N3604.78 W11509.59	2142
LSV	Nellis	12	N3614.68 W11501.50	1864
MLF	Milford	58	N3821.62 W11300.79	4977
MMM	Mormon Mesa	90	N3646.16 W11416.65	2120
MVA	Mina	98	N3833.92 W11801.97	7860
OAL	Coale Dale	124	N3800.20 W11746.23	4800
PGS	Peach Springs	57	N3537.48 W11332.67	4754
TPH	Tonopah Muni	119	N3801.84 W11702.01	5330
TQQ	Silverbow	77	N3748.00 W11647.00	5500
UTI	St George	23	N3705.29 W11335.53	2871



RWY 3L-21R
 PCN 46 R/C/W/T
 RWY 3R-21L
 PCN 51 R/C/W/T
 2017

PAR	RWY	CAT	MINIMA		ARP	ELEV	Scale 1:35'500	
	21L	A B D E	2057 - 0.8 200 (200-0.8/1.6)	GS 3°	36° 14.060° N 115° 01.058° W	1857 [ft] 566 [m]	0 300 600 900 1200 1500 [m]	
	3R	A B D E	2057 - 0.8 200 (200-0.8/1.6)	GS 3°			0 1000 2000 3000 4000 5000 [ft]	
SRA	21R	A C D E	2257 - 1.2 350 (350-1.2/1.6)					
	3L	A C D E	2257 - 1.2 350 (350-1.2/1.6)					

RWY	TORA	TODA	ASDA	LDA	PSN	THR	ALS
21L	10051 [ft] 3063 [m]	11051 [ft] 3368 [m]	11051 [ft] 3368 [m]	10051 [ft] 3063 [m]	36°14.043' N	115°01.018' W	⊕
3R	10120 [ft] 3084 [m]	11120 [ft] 3398 [m]	11120 [ft] 3398 [m]	10120 [ft] 3084 [m]	36°13.029' N	115°02.038' W	

ATIS	NELLIS GROUND	NELLIS TOWER	NELLIS CONTROL	TACAN	ILS RWY 21L	NELLIS EAST	NELLIS WEST
270.100 MHz	275.800 121.800	327.000 132.55	317.525	LSV 12X	109.10 Mhz	384.400	385.000

FYTTR LOW VISUAL OPERATION CHART | VALID 2014

ATIS
270.100
NELLIS GROUND
275.800
NELLIS TOWER
327.000
NELLIS CONTROL
317.525
NELLIS DEP/APP EAST
384.400
BLACKJACK
377.800

CAUTION: If unable to comply with restrictions advise ATC prior to departure.



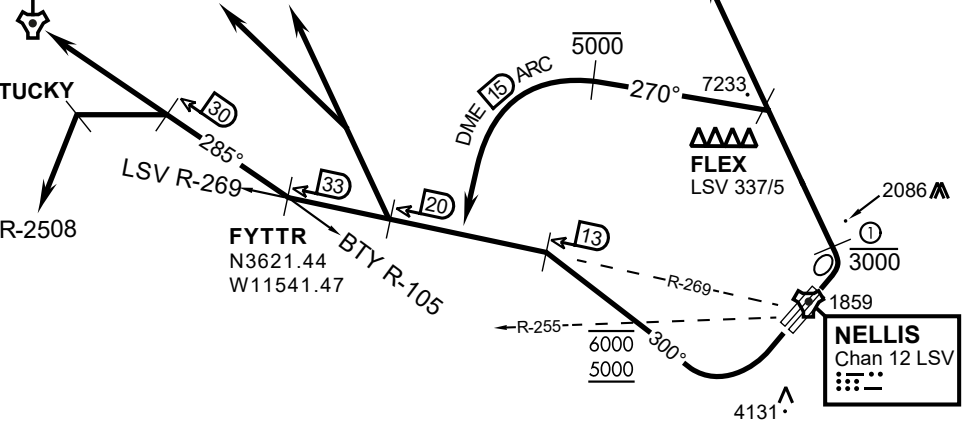
VMC ONLY

PILOT RESPONSIBLE FOR TERRAIN AVOIDANCE

① 4 NM from RWY 3L/R

BEATTY
Chan 94 BTY

RANGE 64/65
RANGE 63



v.1486502 NITTR NAV CHART

DEPARTURE ROUTE DESCRIPTION

TAKEOFF RWY 3L/R:

- Remain below 3,000' MSL until north of Race Track and turned westbound.
- Turn left within 4NM of Nellis direct FLEX. Fly north of FLEX and turn left heading 270°.
- Intercept LSV 15 DME ARC at or below 5,000' MSL.
- ARC south, intercept LSV R-269 outbound. Maintain VFR.

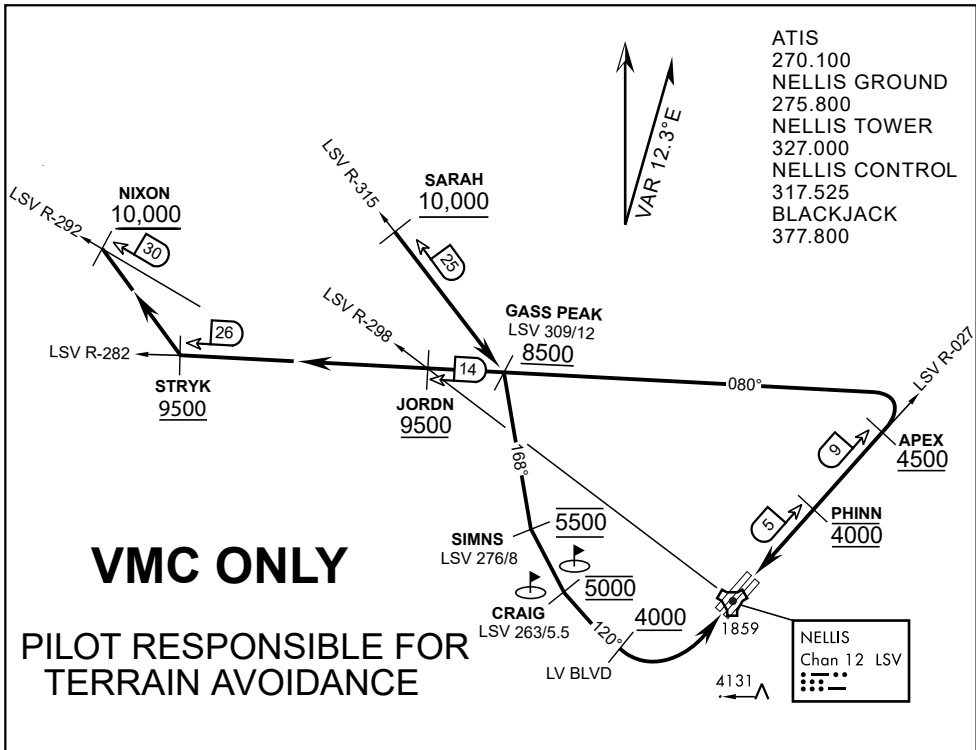
TAKEOFF RWY 21L/21R:

- Follow Noise Abatement Procedures.
- Fly runway heading until past Golf Course, turn right heading 300°.
- Cross LSV R-255 between 5,000' and 6,000' , intercept and proceed outbound on the LSV R-269.Recommend climb to 8,500' MSL or appropriate VFR altitude for overflight of North Las Vegas Training Area. Fly routing for appr. mission/transition.

TRANSITIONS:

- R-4806:** Turn right at the LSV 269/20 direct to assigned ranges.
- BEATTY:** Turn right at FYTTR direct BTY via the BTY R-105
- R-2508:** Turn right at the FYTTR, intercept the BTY 105/30, direct TUCKY, then direct R-2508

FYTTR DEPARTURE AND TRANSITIONS (FYTTR LOW)



APPROACH ROUTE DESCRIPTION

APPROACH RWY 3L/R

Cross STRYK at or above 9,500' MSL, proceed direct GASS PEAK. Cross JORDN at or above 9,500' MSL, cross GASS PEAK at or above 8,500' MSL. Proceed direct SIMNS and cross at 5,500' MSL. Cross Las Vegas Blvd at or above 4,000' MSL then to 3,500' MSL for Initial. Remain within 4 DME if LSV on turn to final.

VFR STRAIGHT-IN RWY 3L/R

Depart CRAIG & descend to be at 3,000' MSL by Las Vegas Blvd. Do not descend below 3,000' MSL until within 5 DME of LSV or 4 NM of the runway on turn to final.

APPROACH RWY 21L/R

Cross STRYK at or above 9,500' MSL, proceed direct GASS PEAK. Cross JORDN at or above 9,500' MSL, cross GASS PEAK at or above 8,500' MSL. Cross APEX at or above 4,500' MSL then direct 5NM initial. Descend to cross PHINN at 4,000' MSL, Inside 5 NM descend to 3,500' MSL.

VFR STRAIGHT-IN RWY 21L/R

Cross APEX at 4,000' MSL. Descend to be at 3,000' MSL at PHINN. Descend to 3,000' MSL at LSV 027/5.

RANGE 63B EXIT

SOUTH: Via NIXON at or above 10,000' MSL, then direct STRYK.

EAST: Via SARAH at or above 10,000' MSL, then direct GASS PEAK.