

MISSION DATA CARD

OPORD		Callsign		Mission		Date/Time		
3548/2025		Panther 1		Training		162002JAN25		
Task	SAM Training SA-3					Freq		
AO	Groom Lake					261.15		
Departure				Recovery				
FYTTR THREE				HI-TACAN Y RWY 21L				
#	Callsign		Pilot		IFF	TCN	LSR	NET
-1	Panther 1-1		Prinz		1011	1Y	1551	01/01
-2	Panther 1-2		Kosmoss		1012	64Y	1552	01/02
-3	Panther 1-3		Hawk		1013	64X	1553	01/03
-4	Panther 1-4		Ghost		1014	1X	1554	01/04

LOADOUT

A/A	2xA9X, A120C				GUN	100% HEI-T	
A/G	2xA88C, 2x2x ADM-141A - BRU-42				CHF	90	
POD	TGP				FLR	30	
TKS	FPU-8A				FUEL	100%	

TOLD

	Takeoff	Target	Joker	Bingo	Land		
FUEL	13047			3500	2000		

AIRBASES

	Name	TCN	ATIS	GND	TWR	RWY	Elev	ILS
Dep	Nellis AFB	12X	270.1	275.8	327.0	21L	1850	109.1
Arr	Nellis AFB	12X	270.1	275.8	327.0	21L	1850	109.1
Div	Creech AFB	87X	290.45	275.8	360.6			

FLIGHTPLAN

#	Name	Navaid/Coords/DME	ALT	TOT
1	FYTTR	N36 21 26.400 W115 41 28.200	15000	
2	Pahute Mesa Airstrip	N37 06 09.190 W116 18 44.953	15000	
3	IP Cover	N37 09 24.466 W115 52 51.640	5000	
4	Target Area	N37 14 13.708 W115 48 07.106	4482	
5	Creech AFB	N36 35 09.627 W115 40 30.875	15000	
6	STRYK	N36 25 37.200 W115 30 42	10000	
7	GASS PEAK	N36 24 08.400 W115 10 39.600	8800	
8	APEX	N36 21 34.800 W114 54 20.400	4500	
9	Nellis AFB	N36 13 32 W115 02 37	1843	

COMMS

Radio	Usage
1	11(Atis), 3(NG), 4(NT), 16(BJ), 18(SH), 16(BJ), 4(NT), 3(NG)
2	Inhouse 261.15
3	MIDS A: 22 / B: 44

SUPPORT**Tanker**

Callsign	TCN	Freq	ALT	TAS
ARCO 1	113Y	319.8	FL250	450
	Pos	AR-625: MVA 168/77 (N3717 W11802)		
SHELL 2	115Y	360.8	FL250	430
	Pos	AR-635: MLF 260/127 (N3831 W11542)		

AWACS

Callsign	Freq	ALT	Pos
MAGIC	377.8	FL270	N3749 W11417 - N3713 W11446

OTHER FLIGHTS

Callsign	Mission	Airframe	Freq	TCN	Grpld	Laser
Python* 1	Training	4x F-16C	131.0	5/68		162X
AO		Task	Mk-84 bombing run pattern			
Monster 3	Training	4x A-10C	132.15	1/64	21	161X
AO	R65C	Task	UNG ROCKET TRAINING			
Edelweiss 1	Training	4x F-16C	134.5	1/64		171X
AO		Task				

RADIO CHANNELS

#	Freq	Name
1		Flight/Squadron specific
2	289.4	Nellis Clearance Delivery
3	275.8	Nellis Ground
4	327.0	Nellis Tower
5	385.4	Nellis Approach/Departure West
6	273.55	Nellis Approach/Departure East
7	317.525	Nellis Control -- Sally
8	254.4	Nellis Control-- Lee
9	305.6	SOF Bullseye
10	343.725	EMERGENCY SINGLE FRQ
11	270.1	Nellis ATIS
12	360.625	Creech AFB Tower
13	250.1	HAVE QUICK 13
14	251.1	HAVE QUICK 14
15	252.1	HAVE QUICK 15
16	377.8	Blackjack
17	265.0	KC-135 AR-641A
18	360.8	KC-135MPRS AR-635
19	319.8	KC-135MPRS AR-625
20	300.05	KC-135 AR-231V

RAMROD

0	1	2	3	4	5	6	7	8	9
C	H	A	R	M	I	N	G	L	Y

KTC 1400 C

	0	1	2	3	4	5	6	7	8	9
A	PFLW	IJY	GBX	KT	UM	DEQ	VH	CO	NA	SR
B	VJRT	PQD	WMY	FX	AG	USI	KC	LE	NH	BO
C	YUGK	RAJ	LTC	PQ	FV	BMX	DS	OE	HW	NI
D	IDEM	GXT	KJU	LQ	SC	YPW	HV	BN	RO	FA
E	XEAR	CFT	HID	BK	LG	NQO	VJ	WP	YS	UM
F	ISNX	RKA	TOH	JP	YW	LFG	BU	VQ	EM	CD
G	LECV	IPY	UNT	XD	JG	HOB	KS	AR	QW	MF
H	MUHW	FOQ	JEL	KP	GX	TVB	SC	NY	IR	AD
I	RDFB	TLJ	XEH	UA	VN	YQG	OK	WI	PC	SM
J	EJSP	UFL	AQT	BD	CO	XRG	WY	IV	NH	MK
K	SKFD	ING	TMJ	LE	PU	BXO	CV	WY	RQ	HA
L	IKUE	DQV	JYL	HF	SX	PAW	TC	NM	OB	GR
M	QILA	HVS	DWR	FK	JU	XGP	BM	EC	YN	TO
N	MQGO	SLR	WVH	FN	EC	PXT	JD	IU	BK	YA
O	GERL	KWM	SAF	PC	HV	OYI	UJ	DN	XQ	BT
P	JHNL	SOG	XIR	PU	VM	KDY	EW	FB	QA	TC
Q	UCAY	MBI	WXD	QG	EH	FOS	JK	LV	TN	RP
R	GEOS	LIQ	JKA	VN	MC	PXB	TH	RW	FY	UD
S	VTYH	RBE	UXJ	FD	CW	POG	SI	NK	QA	ML
T	WCXU	QPF	TNH	DM	KR	LJI	OV	AY	GE	SB
U	XFBN	ESV	DMI	UG	JH	YRW	CT	PO	AL	QK
V	CRPE	IAO	DHK	WF	SM	UYG	JB	NV	TX	QL
W	RMDY	KNH	PQI	ST	JL	AVU	FB	XE	OC	GW
X	MGFB	CQO	TPR	KE	LH	WDY	VA	XJ	IU	NS
Y	XWBC	PLG	UEK	YF	QI	NHV	MA	JD	SR	OT

NAVAIDS

Id	Name	Channel	Position	Elevation
BCE	Bryce Canyon	75	N3741.35 W11218.23	9040
BIH	Bishop	33	N3722.62 W11821.99	4114
BLD	Boulder	114	N3559.75 W11451.82	3650
BTY	Beatty	94	N3648.54 W11644.86	2925
CDC	Cedar City	120	N3747.24 W11304.90	5463
DAG	Daggett	79	N3457.75 W11634.69	1760
EED	Needles	99	N3445.96 W11428.43	650
GFS	Goffs	91	N3507.87 W11510.59	4019
GRL	Groom Lake	18	N3713.91 W11548.16	4475
HEC	Hector	74	N3447.83 W11627.78	1854
ILC	Wilson Creek	110	N3815.02 W11423.65	9318
INS	Creech AFB	87	N3635.20 W11540.12	3101
LAS	McCarran Intl	116	N3604.78 W11509.59	2142
LSV	Nellis	12	N3614.68 W11501.50	1864
MLF	Milford	58	N3821.62 W11300.79	4977
MMM	Mormon Mesa	90	N3646.16 W11416.65	2120
MVA	Mina	98	N3833.92 W11801.97	7860
OAL	Coale Dale	124	N3800.20 W11746.23	4800
PGS	Peach Springs	57	N3537.48 W11332.67	4754
TPH	Tonopah Muni	119	N3801.84 W11702.01	5330
TQQ	Silverbow	77	N3748.00 W11647.00	5500
UTI	St George	23	N3705.29 W11335.53	2871



RWY 3L-21R
 PCN 46 R/C/W/T
 RWY 3R-21L
 PCN 51 R/C/W/T
 2017

PAR	RWY	CAT	MINIMA	ARP	ELEV	Scale
	21L	A B D E	2057 - 0.8 200 (200-0.8/1.6) GS 3°	36° 14.060° N 115° 01.058° W	1857 [ft] 566 [m]	0 300 600 900 1200 1500 [m] 0 1000 2000 3000 4000 5000 [ft]
	3R	A B D E	2057 - 0.8 200 (200-0.8/1.6) GS 3°			
	21R	A C D E	2257 - 1.2 350 (350-1.2/1.6)			
	3L	A C D E	2257 - 1.2 350 (350-1.2/1.6)			

RWY	TORA	TODA	ASDA	LDA	PSN	THR	ALS
21L	10051 [ft] 3063 [m]	11051 [ft] 3368 [m]	11051 [ft] 3368 [m]	10051 [ft] 3063 [m]	36°14.043' N	115°01.018' W	⊕
3R	10120 [ft] 3084 [m]	11120 [ft] 3398 [m]	11120 [ft] 3398 [m]	10120 [ft] 3084 [m]	36°13.029' N	115°02.038' W	

ATIS	NELLIS GROUND	NELLIS TOWER	NELLIS CONTROL	TACAN	ILS RWY 21L	NELLIS EAST	NELLIS WEST
270.100 MHz	275.800 121.800	327.000 132.55	317.525	LSV 12X	109.10 Mhz	384.400	385.000

FYTTR THREE DEPARTURE IFR CHART | VALID 2014 LAS VEGAS, NEVADA

ATIS
270.100
NELLIS GROUND
275.800
NELLIS TOWER
327.000
NELLIS CONTROL
317.525
NELLIS DEP/APP EAST
384.400
BLACKJACK
377.800



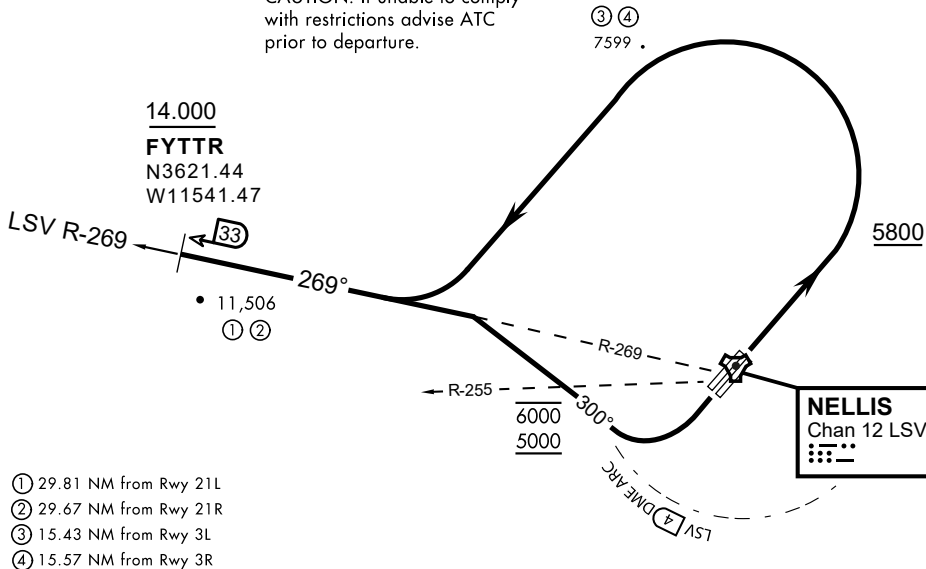
Rwy	Knots	60	120	180	240	300	360
3L (a)	V/V(fpm)	394	788	1182	1576	1970	2364
3R (a)	V/V(fpm)	392	784	1176	1568	1960	2352
21L (b)	V/V(fpm)	388	776	1164	1552	1940	2328
21R (b)	V/V(fpm)	390	780	1170	1560	1950	2340

Minimum Climb Rate

(a) to 9300

(b) to 13 500

CAUTION: If unable to comply with restrictions advise ATC prior to departure.



- ① 29.81 NM from Rwy 21L
- ② 29.67 NM from Rwy 21R
- ③ 15.43 NM from Rwy 3L
- ④ 15.57 NM from Rwy 3R

DEPARTURE ROUTE DESCRIPTION

TAKEOFF RWY 3L/R

- Fly runway heading until reaching 5,800'.
- Then climbing left turn to intercept LSV TACAN R-269 outbound.
- Cross FYTTR at or above 14,000' or as assigned, then via assigned route.

TAKEOFF RWY 21L/21R

- Turn right to intercept LSV TACAN R-269 outbound.
- Remain within LSV 4 DME until joining LSV R-269
- Cross R-255 between 5,000' and 6,000'.
- Cross FYTTR at or above 14,000' or as assigned, then via assigned route.

NOISE ABATEMENT PROCEDURES:

Fly according Nellis Noise Abatement instructions as published

HI-TACAN Y RWY 21L

TACAN LSV Chan 12	APCH CRS 210°	Rwy ldg 21L 10,051 TDZE 1865 Arprt Elev 1869	Rwy ldg 21R 10,120 TDZE 1869
-------------------	---------------	--	------------------------------

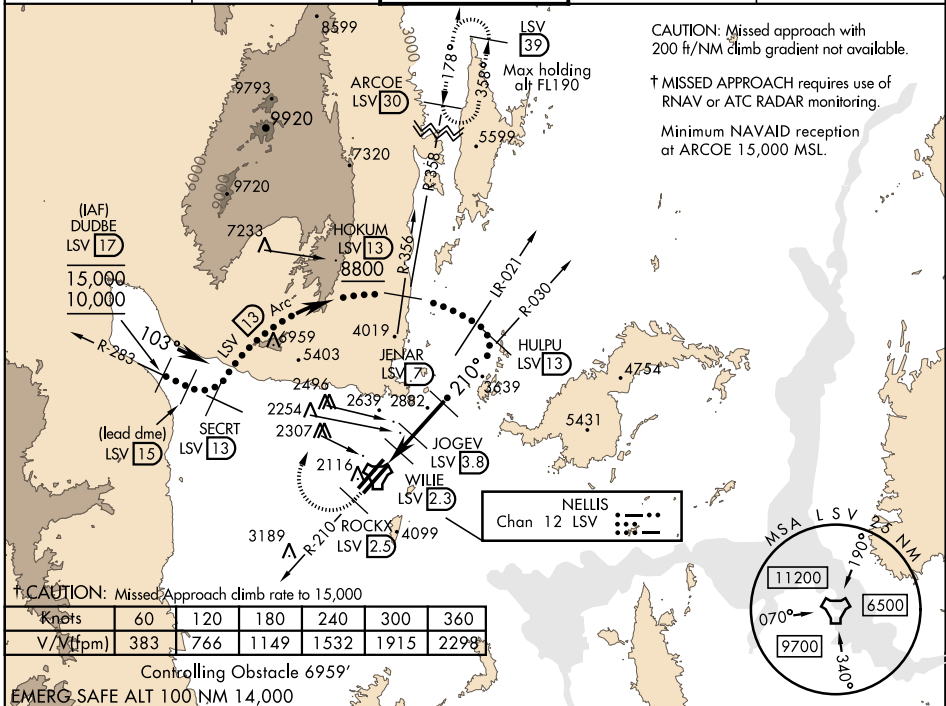
JAL-227 [USAF] NELLIS AFB (KLSV)

* When ALS inop, increase CAT CDE vis to 1 3/4 miles.
 ** Circling not authorized E of Rwy 3R-21L.



† MISSED APPROACH: Climb to 15,000, intercept LSV TACAN R-210 to 2.5 DME (ROCKX), then climbing right turn heading 020° to join LSV R-358 to ARCOE and hold, continue climb in hold to 15,000. Missed approach not for civil use.

ATIS 270.1	NELLIS APP CON 124.95 273.55	NELLIS TOWER 132.55 327.0	GND CON 121.8 275.8	CLNC DEL 120.9 289.4
------------	------------------------------	---------------------------	---------------------	----------------------

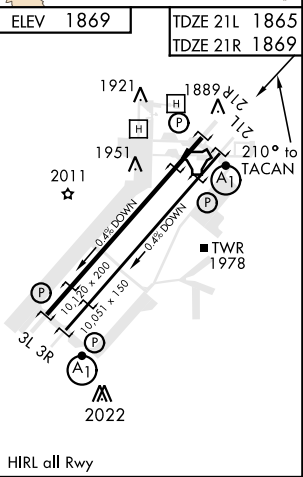
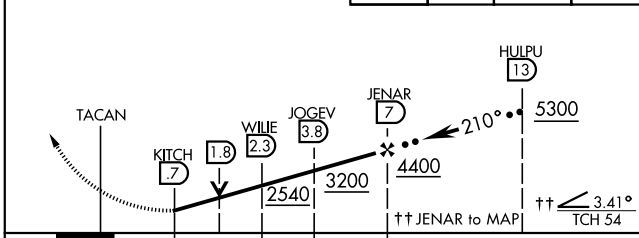


† CAUTION: Missed Approach climb rate to 15,000

Knots	60	120	180	240	300	360
V/Vt (fpm)	383	766	1149	1532	1915	2298

Controlling Obstacle 6959'
EMERG. SAFE ALT 100 NM 14,000

VGSI and descent angles not coincident (VGSI angle 3.00/TCH 54).	ELEV 1869	ROCKX LSV R-210 2.5	ARCOE R-358 30	TDZE 21L 1865	TDZE 21R 1869
--	-----------	---------------------	----------------	---------------	---------------



CATEGORY	C	D	E
S-21L *	2460-1 1/4	595 (600-1 1/4)	
SIDESTEP 21R	2460-1	591 (600-1)	
CIRCLING **	2620-2 1/4 751 (800-2 1/4)	2840-3 971 (1000-3)	3040-3 1171 (1200-3)

HI-TACAN Y RWY 21L

SW-4, 05 DEC 2019 to 02 JAN 2020

SW-4, 05 DEC 2019 to 02 JAN 2020



INDIAN SPRINGS, NEVADA

TACAN INS Chan 87	APCH CRS 065°	Rwy ldg TDZE 3133	9002 3113
	Arpt Elev 3113		

INDIAN SPRINGS AF AUX (KINS)

▼ * MISSED APPROACH: Straight ahead to INS TACAN, intercept INS R-outbound, cross 17 DME at or above 9500, then direkt KSV TACAN 114

NELLIS CON

CREECH AFB TOWER
118.30 60.60

GND CON

NOT FOR CIVIL USE

FOR USE UNDER BASIC VFR
WEATHER MINIMUMS ONLY

PILOT IS RESPONSIBLE FOR TERRAIN/OBSTACLE AVOIDANCE AND APPROPRIATE VFR CLOUD CLEARANCE FOR ALL

CAUTION: Descent gradients are greater than allowed under standard TERPS criteria and inbound course does not meet straight-in criteria

CAUTION: Final approach course crosses Runway centerline at MIDFIELD. Maneuvering left of course required prior to landing. Do not Maneuver farther north than the INS R- 258

Modified by viaBog 66 for use with DCS
NOT FOR REAL LIFE NAVIGATION

Modified by viaBog 66 for use with DCS
NOT FOR REAL LIFE NAVIGATION



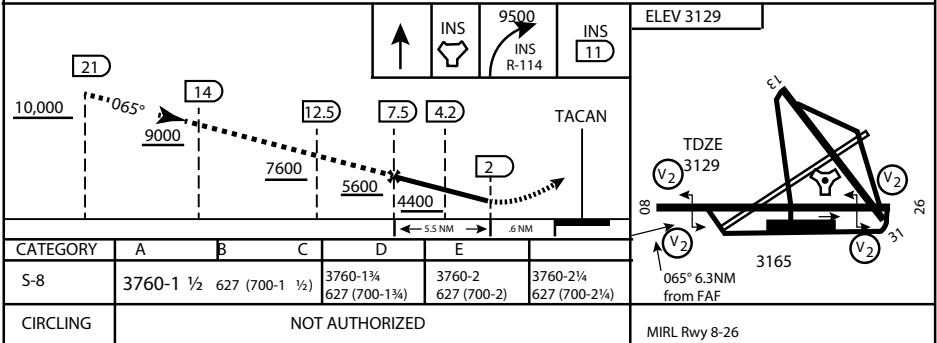
* CAUTION: Missed Approach Climb Rate to 4,700

Knots	60	120	180	240	300
V/V (fpm)	230	460	690	920	1150

Controlling Obstacle

HIGH ALTITUDE FACILITIES

EMERG SAFE ALT 100 NM 14,000



CATEGORY	A	B	C	D	E	ELEV 3129
S-8	3760-1 1/2	627 (700-1 1/2)	3760-1 3/4 627 (700-1 3/4)	3760-2 627 (700-2)	3760-2 1/4 627 (700-2 1/4)	
CIRCLING	NOT AUTHORIZED					MIRL Rwy 8-26

CITY OF INDIAN, NEVADA

INDIAN SPRINGS AF AUX (KINS)

(FOR DAY VFR USE ONLY)



AIRPORT DIAGRAM

476 VFG

CREECH AFB (KINS)
INDIAN SPRINGS, NEVADA

ATIS
122.5
CREECH TOWER
118.4 360.7 38.65
GND CON
118.3 275.8
CLNC DEL

115°42'W

FIELD
ELEV
3127

80

972 X 150

HOT
CARGO
PAD

78.9°

BAK-12

VAR 12.5° E

WEST
EOR

115°41'W

476 VFG JAN 2019

476 VFG JAN 2019

CONTROL
TOWER

BASE
OPS

RPA LOLA
WEST

RPA LOLA
EAST

LOLA /
HUNG
ORDNANCE

199 X 100
ELEV
3127

RUNWAY
31/13
MQ/RQ-1
ONLY

9002 X 150

258.5°

860 X 100

313.8°

4064 X 100

115°40'W

BAK-12

ELEV
3127

EAST
EOR

1030 X 150

26

AIRPORT DIAGRAM

INDIAN SPRINGS, NEVADA
CREECH AFB (KINS)