

MISSION DATA CARD

OPORD		Callsign		Mission		Date/Time	
3547/2025		Monster 3		Training		162000JAN25	
Task	UNG ROCKET TRAINING					Freq	
AO	R65C					132.15	
Departure				Recovery			
FYTTR LOW				STRYK			
#	Callsign	Pilot		IFF	TCN	LSR	NET
-1	Monster 3-1	addiks		1431	1Y	1611	21/01
-2	Monster 3-2	Stoner		1432	64Y	1612	21/02
-3	Monster 3-3	Marsy		1433	64X	1613	21/03
-4	Monster 3-4	Lenzi		1434	1X	1614	21/04

LOADOUT

A/A	C9M				GUN	100% CM
A/G	13x7M151				CHF	120
POD	A184L, TGP				FLR	360
TKS					FUEL	80%

TOLD

	Takeoff	Target	Joker	Bingo	Land
FUEL	8869				

AIRBASES

	Name	TCN	ATIS	GND	TWR	RWY	Elev	ILS
Dep	Nellis AFB	12X	270.1	275.8	327.0	21L	1850	109.1
Arr	Nellis AFB	12X	270.1	275.8	327.0	21L	1850	109.1

FLIGHTPLAN

#	Name	Navaid/Coords/DME	ALT	TOT
1	FLEX	LSV 337/5 (N36 18.620 W115 02.360)		
2	FYTTR	LSV 269/33 (N36 21.440 W115 41.470)	12000	
3	T65.01	N36 41.328 W115 47.685		
4	T65.03	N36 42.589 W115 46.126		
5	T65.05	N36 44.411 W115 44.792		
6	T65.08	N36 47.310 W115 44.793		
7	T65.06	N36 43.666 W115 48.167		
8	STRYK	LSV 282/26 (N36 25.620 W115 30.700)	9500	
9	GASS PEAK	LSV 309/12 (N36 24.140 W115 10.660)	8500	
10	APEX	LSV 027/09 (N36 21.580 W114 54.340)	4500	
11	SIMNS	LSV 276/8 (N36 17.340 W115 10.750)	5500	
12	CRAIG	LSV 263/5.5 (N36 15.250 W115 08.270)	5000	
13	Nellis	N36 14.680 W115 01.500		

COMMS

Radio	Usage
1	132.15
2	11-3-4-16-11-4-3
3	32.00

NOTES

CAUTION: Python-1 (4x F-16) Crossing R65 at 13.000ft !!!

STAY 12.000ft OR BELOW

Target Elevations: (Am besten Radio Altimeter verwenden)

65-01 : 3959 ft

65-02 : 3929 ft

65-03 : 4253 ft

65-04 : 4564 ft

65.05 : 4650 ft

65-06 : 4293 ft

65-07 : 4254 ft

65-08 : 4492 ft

65-10 : 4271 ft

Low Altitude Tactical Rocket (LATR)

Dive Angle von bis zu 20 Grad

Slant Range von 10.000 ft (1,7 NM). Minimum Altitude ist 1000ft.

3 LAR : 1.6nm Base: 700ft Track: 600ft Release: 500ft Abort: 250ft

6 LAR : 4.2nm Base: 5.0 Track: 4.6 Release: 4.0 Abort: 3.5

(Optional) Loft Rockets:

Slant Range von 10.000 ft. LR wird mit CCRP durchgeführt.

10LR : 8.0nm Base: 8.0 Track: 5.0 Release: 5.4 Abort: 6.0

(Optional 2): Tanken

SUPPORT**Tanker**

Callsign	TCN	Freq	ALT	TAS
TEXACO 1	94Y	265.0	17000	290
Pos	AR-641A: CDC 242/78 (N3728 W11439)			

OTHER FLIGHTS

Callsign	Mission	Airframe	Freq	TCN	Grpld	Laser
Python* 1	Training	4x F-16C	131.0	5/68		162X
AO		Task	Mk-84 bombing run pattern			
Panther 1	Training	4x F/A-18C	261.15	1/64	1	155X
AO	Groom Lake	Task	SAM Training SA-3			
Edelweiss 1	Training	4x F-16C	134.5	1/64		171X
AO		Task				

RADIO CHANNELS

#	Freq	Name
1		Flight/Squadron specific
2	289.4	Nellis Clearance Delivery
3	275.8	Nellis Ground
4	327.0	Nellis Tower
5	385.4	Nellis Approach/Departure West
6	273.55	Nellis Approach/Departure East
7	317.525	Nellis Control -- Sally
8	254.4	Nellis Control-- Lee
9	305.6	SOF Bullseye
10	343.725	EMERGENCY SINGLE FRQ
11	270.1	Nellis ATIS
12	360.625	Creech AFB Tower
13	250.1	HAVE QUICK 13
14	251.1	HAVE QUICK 14
15	252.1	HAVE QUICK 15
16	377.8	Blackjack
17	265.0	KC-135 AR-641A
18	360.8	KC-135MPRS AR-635
19	319.8	KC-135MPRS AR-625
20	300.05	KC-135 AR-231V

RAMROD

0	1	2	3	4	5	6	7	8	9
C	H	A	R	M	I	N	G	L	Y

KTC 1400 C

	0	1	2	3	4	5	6	7	8	9
A	PFLW	IJY	GBX	KT	UM	DEQ	VH	CO	NA	SR
B	VJRT	PQD	WMY	FX	AG	USI	KC	LE	NH	BO
C	YUGK	RAJ	LTC	PQ	FV	BMX	DS	OE	HW	NI
D	IDEM	GXT	KJU	LQ	SC	YPW	HV	BN	RO	FA
E	XEAR	CFT	HID	BK	LG	NQO	VJ	WP	YS	UM
F	ISNX	RKA	TOH	JP	YW	LFG	BU	VQ	EM	CD
G	LECV	IPY	UNT	XD	JG	HOB	KS	AR	QW	MF
H	MUHW	FOQ	JEL	KP	GX	TVB	SC	NY	IR	AD
I	RDFB	TLJ	XEH	UA	VN	YQG	OK	WI	PC	SM
J	EJSP	UFL	AQT	BD	CO	XRG	WY	IV	NH	MK
K	SKFD	ING	TMJ	LE	PU	BXO	CV	WY	RQ	HA
L	IKUE	DQV	JYL	HF	SX	PAW	TC	NM	OB	GR
M	QILA	HVS	DWR	FK	JU	XGP	BM	EC	YN	TO
N	MQGO	SLR	WVH	FN	EC	PXT	JD	IU	BK	YA
O	GERL	KWM	SAF	PC	HV	OYI	UJ	DN	XQ	BT
P	JHNL	SOG	XIR	PU	VM	KDY	EW	FB	QA	TC
Q	UCAY	MBI	WXD	QG	EH	FOS	JK	LV	TN	RP
R	GEOS	LIQ	JKA	VN	MC	PXB	TH	RW	FY	UD
S	VTYH	RBE	UXJ	FD	CW	POG	SI	NK	QA	ML
T	WCXU	QPF	TNH	DM	KR	LJI	OV	AY	GE	SB
U	XFBN	ESV	DMI	UG	JH	YRW	CT	PO	AL	QK
V	CRPE	IAO	DHK	WF	SM	UYG	JB	NV	TX	QL
W	RMDY	KNH	PQI	ST	JL	AVU	FB	XE	OC	GW
X	MGFB	CQO	TPR	KE	LH	WDY	VA	XJ	IU	NS
Y	XWBC	PLG	UEK	YF	QI	NHV	MA	JD	SR	OT

NAVAIDS

Id	Name	Channel	Position	Elevation
BCE	Bryce Canyon	75	N3741.35 W11218.23	9040
BIH	Bishop	33	N3722.62 W11821.99	4114
BLD	Boulder	114	N3559.75 W11451.82	3650
BTY	Beatty	94	N3648.54 W11644.86	2925
CDC	Cedar City	120	N3747.24 W11304.90	5463
DAG	Daggett	79	N3457.75 W11634.69	1760
EED	Needles	99	N3445.96 W11428.43	650
GFS	Goffs	91	N3507.87 W11510.59	4019
GRL	Groom Lake	18	N3713.91 W11548.16	4475
HEC	Hector	74	N3447.83 W11627.78	1854
ILC	Wilson Creek	110	N3815.02 W11423.65	9318
INS	Creech AFB	87	N3635.20 W11540.12	3101
LAS	McCarran Intl	116	N3604.78 W11509.59	2142
LSV	Nellis	12	N3614.68 W11501.50	1864
MLF	Milford	58	N3821.62 W11300.79	4977
MMM	Mormon Mesa	90	N3646.16 W11416.65	2120
MVA	Mina	98	N3833.92 W11801.97	7860
OAL	Coale Dale	124	N3800.20 W11746.23	4800
PGS	Peach Springs	57	N3537.48 W11332.67	4754
TPH	Tonopah Muni	119	N3801.84 W11702.01	5330
TQQ	Silverbow	77	N3748.00 W11647.00	5500
UTI	St George	23	N3705.29 W11335.53	2871



RWY 3L-21R
 PCN 46 R/C/W/T
 RWY 3R-21L
 PCN 51 R/C/W/T
 2017

PAR	RWY	CAT	MINIMA		ARP	ELEV	Scale 1:35'500	
	21L	A B D E	2057 - 0.8 200	(200-0.8/1.6) GS 3°	36° 14.060° N 115° 01.058° W	1857 [ft] 566 [m]	0	300
	3R	A B D E	2057 - 0.8 200	(200-0.8/1.6) GS 3°			600	900
	21R	A C D E	2257 - 1.2 350	(350-1.2/1.6)			1200	1500 [m]
	3L	A C D E	2257 - 1.2 350	(350-1.2/1.6)			0	1000
							2000	3000
							4000	5000 [ft]

RWY	TORA	TODA	ASDA	LDA	PSN	THR	ALS
21L	10051 [ft] 3063 [m]	11051 [ft] 3368 [m]	11051 [ft] 3368 [m]	10051 [ft] 3063 [m]	36°14.043' N	115°01.018' W	⊕
3R	10120 [ft] 3084 [m]	11120 [ft] 3398 [m]	11120 [ft] 3398 [m]	10120 [ft] 3084 [m]	36°13.029' N	115°02.038' W	

ATIS	NELLIS GROUND	NELLIS TOWER	NELLIS CONTROL	TACAN	ILS RWY 21L	NELLIS EAST	NELLIS WEST
270.100 MHz	275.800 121.800	327.000 132.55	317.525	LSV 12X	109.10 Mhz	384.400	385.000

FYTTR LOW VISUAL OPERATION CHART | VALID 2014

ATIS
270.100
NELLIS GROUND
275.800
NELLIS TOWER
327.000
NELLIS CONTROL
317.525
NELLIS DEP/APP EAST
384.400
BLACKJACK
377.800

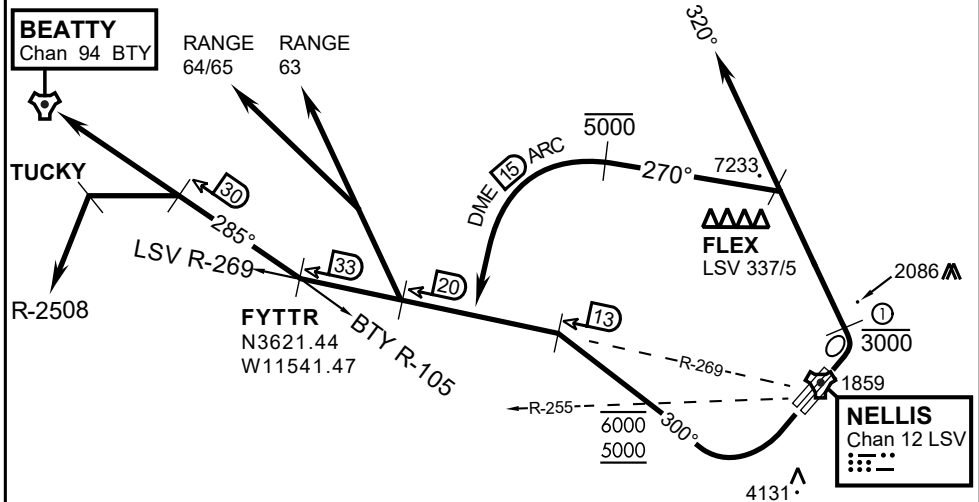
CAUTION: If unable to comply with restrictions advise ATC prior to departure.



VMC ONLY

PILOT RESPONSIBLE FOR TERRAIN AVOIDANCE

① 4 NM from RWY 3L/R



DEPARTURE ROUTE DESCRIPTION

TAKEOFF RWY 3L/R:

- Remain below 3,000' MSL until north of Race Track and turned westbound.
- Turn left within 4NM of Nellis direct FLEX. Fly north of FLEX and turn left heading 270°.
- Intercept LSV 15 DME ARC at or below 5,000' MSL.
- ARC south, intercept LSV R-269 outbound. Maintain VFR.

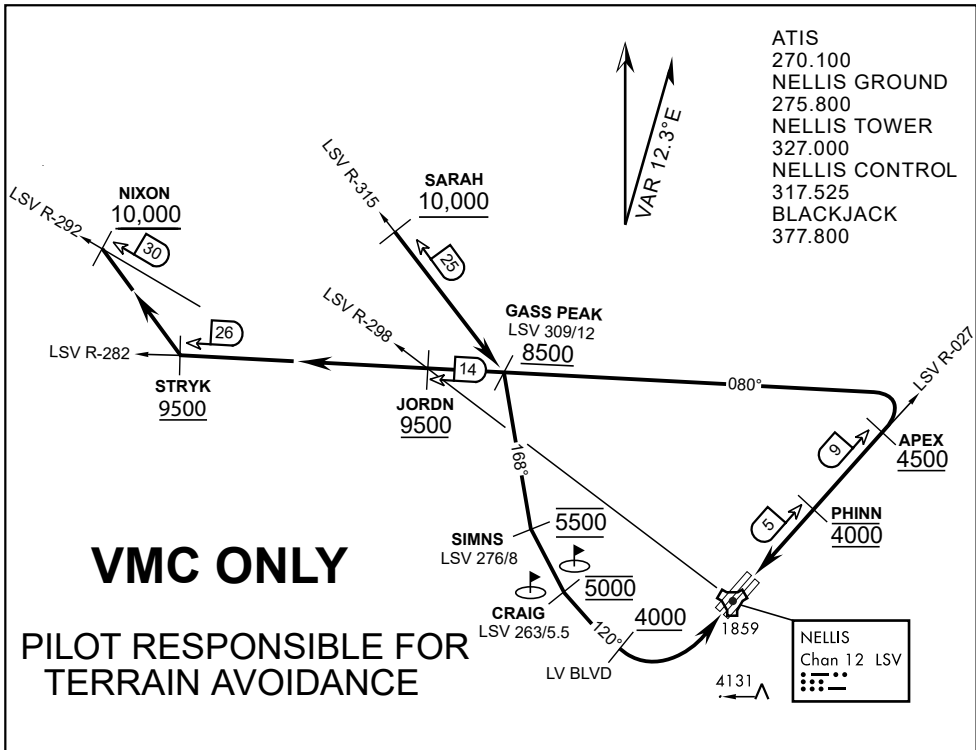
TAKEOFF RWY 21L/21R:

- Follow Noise Abatement Procedures.
- Fly runway heading until past Golf Course, turn right heading 300°.
- Cross LSV R-255 between 5,000' and 6,000' , intercept and proceed outbound on the LSV R-269.Recommend climb to 8,500' MSL or appropriate VFR altitude for overflight of North Las Vegas Training Area. Fly routing for appr. mission/transition.

TRANSITIONS:

- R-4806:** Turn right at the LSV 269/20 direct to assigned ranges.
- BEATTY:** Turn right at FYTTR direct BTY via the BTY R-105
- R-2508:** Turn right at the FYTTR, intercept the BTY 105/30, direct TUCKY, then direct R-2508

FYTTR DEPARTURE AND TRANSITIONS (FYTTR LOW)



APPROACH ROUTE DESCRIPTION

APPROACH RWY 3L/R

Cross STRYK at or above 9,500' MSL, proceed direct GASS PEAK. Cross JORDN at or above 9,500' MSL, cross GASS PEAK at or above 8,500' MSL. Proceed direct SIMNS and cross at 5,500' MSL. Cross Las Vegas Blvd at or above 4,000' MSL then to 3,500' MSL for Initial. Remain within 4 DME if LSV on turn to final.

VFR STRAIGHT-IN RWY 3L/R

Depart CRAIG & descend to be at 3,000' MSL by Las Vegas Blvd. Do not descend below 3,000' MSL until within 5 DME of LSV or 4 NM of the runway on turn to final.

APPROACH RWY 21L/R

Cross STRYK at or above 9,500' MSL, proceed direct GASS PEAK. Cross JORDN at or above 9,500' MSL, cross GASS PEAK at or above 8,500' MSL. Cross APEX at or above 4,500' MSL then direct 5NM initial. Descend to cross PHINN at 4,000' MSL, Inside 5 NM descend to 3,500' MSL.

VFR STRAIGHT-IN RWY 21L/R

Cross APEX at 4,000' MSL. Descend to be at 3,000' MSL at PHINN. Descend to 3,000' MSL at LSV 027/5.

RANGE 63B EXIT

SOUTH: Via NIXON at or above 10,000' MSL, then direct STRYK.
EAST: Via SARAH at or above 10,000' MSL, then direct GASS PEAK.