

**MISSION DATA CARD**

OPORD		Callsign		Mission		Date/Time		
3546/2025		Edelweiss 5		Training		151430JAN25		
Task	LCR Check Test					Freq		
AO						264.55		
Departure				Recovery				
FYTTR THREE				STRYK				
#	Callsign		Pilot		IFF	TCN	LSR	NET
-1	Edelweiss 5-1		Cloud		1751	12X	1751	01/01

**LOADOUT**

A/A	2xA9X, 2xA120C				GUN	100% HEI-T	
A/G	4xBDU-45B				CHF	120	
POD					FLR	0	
TKS	FPU-8A				FUEL	100%	

**TOLD**

	Takeoff	Target	Joker	Bingo	Land
FUEL	13047				

**AIRBASES**

	Name	TCN	ATIS	GND	TWR	RWY	Elev	ILS
Dep	Nellis AFB	12X	270.1	275.8	327.0	21L	1850	109.1
Arr	Nellis AFB	12X	270.1	275.8	327.0	21L	1850	109.1
Div	Creech AFB	87X	290.45	275.8	360.6			

**FLIGHTPLAN**

#	Name	Navaid/Coords/DME	ALT	TOT
1	FYTTR	LSV 269/33 (N36 21.440 W115 41.470)		
2	Creech	N36 35.208 W115 40.961		
3	STRYK	LSV 282/26 (N36 25.620 W115 30.700)		

**SUPPORT****Tanker**

Callsign	TCN	Freq	ALT	TAS
SHELL 2	115Y	360.8	FL250	430
	Pos	AR-635: MLF 260/127 (N3831 W11542)		

**AWACS**

Callsign	Freq	ALT	Pos
MAGIC	377.8	FL270	N3749 W11417 - N3713 W11446

**RADIO CHANNELS**

#	Freq	Name
1		Flight/Squadron specific
2	289.4	Nellis Clearance Delivery
3	275.8	Nellis Ground
4	327.0	Nellis Tower
5	385.4	Nellis Approach/Departure West
6	273.55	Nellis Approach/Departure East
7	317.525	Nellis Control -- Sally
8	254.4	Nellis Control-- Lee
9	305.6	SOF Bullseye
10	343.725	EMERGENCY SINGLE FRQ
11	270.1	Nellis ATIS
12	360.625	Creech AFB Tower
13	250.1	HAVE QUICK 13
14	251.1	HAVE QUICK 14
15	252.1	HAVE QUICK 15
16	377.8	Blackjack
17	265.0	KC-135 AR-641A
18	360.8	KC-135MPRS AR-635
19	319.8	KC-135MPRS AR-625
20	300.05	KC-135 AR-231V

**RAMROD**

0	1	2	3	4	5	6	7	8	9
M	A	C	K	I	N	T	O	S	H

**KTC 1400 C**

	0	1	2	3	4	5	6	7	8	9
A	FOQM	GRL	EVD	BA	SJ	PIH	TN	CY	KW	UX
B	ITLP	WFX	CMG	BV	YS	AQD	KE	UJ	HN	OR
C	ORPC	LXK	SNH	DQ	WM	BEU	IJ	AG	VF	YT
D	FQCE	DMA	KIT	UN	GJ	VRS	YH	OB	LP	WX
E	EVYU	MCK	DFH	GX	TJ	QLW	PI	AR	SO	BN
F	UVMY	KXJ	PBH	ID	WQ	ACT	FR	EO	SL	NG
G	MDXI	APO	WKV	SR	QF	UYC	TG	HB	NE	LJ
H	JUTW	ORH	XQP	LK	NI	VDC	SY	FE	AB	MG
I	AWPX	HLT	EDY	JG	VC	QOI	KS	UM	BN	RF
J	GRLF	JDC	QIA	MP	KO	SUE	BT	VH	NX	YW
K	CVHE	LIY	NAM	XF	JW	RSO	DQ	BU	GP	KT
L	LWVF	QDE	SNR	BX	UK	HCA	JP	TM	IG	YO
M	AIUC	LHK	BMD	YF	NW	TRE	QJ	PV	XS	GO
N	DMGR	CUO	NWQ	PL	VB	TYS	EX	JH	IF	KA
O	XIQN	GVW	UDM	ER	YF	TCP	JS	OK	AL	BH
P	TYHP	AQK	GLE	MR	XB	VUC	WN	DI	JF	SO
Q	WTKG	DJI	HQF	MN	EY	LCV	OA	SU	XR	PB
R	ATWE	VFO	UCI	HN	KS	GJX	RP	QB	YM	LD
S	UAML	ITY	RVH	SG	FP	EQO	NB	CJ	XD	KW
T	MCEF	KRY	TXL	VH	SW	QAP	JI	DB	GN	UO
U	JPEN	DCA	OTQ	KV	FR	IGY	HL	XU	MS	WB
V	GQWH	OSN	UIM	EC	XK	ALV	YB	DJ	PR	TF
W	SHEN	OIK	QAL	WM	CV	XDB	PU	RF	GY	JT
X	JHKT	RBC	EYU	LD	OA	VNP	GS	XF	MI	QW
Y	IXNF	LGU	ODJ	HS	BC	YQA	EW	PT	RV	KM

**NAVAIDS**

<b>Id</b>	<b>Name</b>	<b>Channel</b>	<b>Position</b>	<b>Elevation</b>
BCE	Bryce Canyon	75	N3741.35 W11218.23	9040
BIH	Bishop	33	N3722.62 W11821.99	4114
BLD	Boulder	114	N3559.75 W11451.82	3650
BTY	Beatty	94	N3648.54 W11644.86	2925
CDC	Cedar City	120	N3747.24 W11304.90	5463
DAG	Daggett	79	N3457.75 W11634.69	1760
EED	Needles	99	N3445.96 W11428.43	650
GFS	Goffs	91	N3507.87 W11510.59	4019
GRL	Groom Lake	18	N3713.91 W11548.16	4475
HEC	Hector	74	N3447.83 W11627.78	1854
ILC	Wilson Creek	110	N3815.02 W11423.65	9318
INS	Creech AFB	87	N3635.20 W11540.12	3101
LAS	McCarran Intl	116	N3604.78 W11509.59	2142
LSV	Nellis	12	N3614.68 W11501.50	1864
MLF	Milford	58	N3821.62 W11300.79	4977
MMM	Mormon Mesa	90	N3646.16 W11416.65	2120
MVA	Mina	98	N3833.92 W11801.97	7860
OAL	Coale Dale	124	N3800.20 W11746.23	4800
PGS	Peach Springs	57	N3537.48 W11332.67	4754
TPH	Tonopah Muni	119	N3801.84 W11702.01	5330
TQQ	Silverbow	77	N3748.00 W11647.00	5500
UTI	St George	23	N3705.29 W11335.53	2871



PAR	RWY	CAT	MINIMA		ARP	ELEV	Scale 1:35'500	
	21L	A B D E	2057 - 0.8 200 (200-0.8/1.6)	GS 3°	36° 14.060° N 115° 01.058° W	1857 [ft] 566 [m]	0 300 600 900 1200 1500 [m]	
	3R	A B D E	2057 - 0.8 200 (200-0.8/1.6)	GS 3°			0 1000 2000 3000 4000 5000 [ft]	
SRA	21R	A C D E	2257 - 1.2 350 (350-1.2/1.6)					
	3L	A C D E	2257 - 1.2 350 (350-1.2/1.6)					

RWY	TORA	TODA	ASDA	LDA	PSN	THR	ALS
21L	10051 [ft] 3063 [m]	11051 [ft] 3368 [m]	11051 [ft] 3368 [m]	10051 [ft] 3063 [m]	36°14.043' N	115°01.018' W	⊕
3R	10120 [ft] 3084 [m]	11120 [ft] 3398 [m]	11120 [ft] 3398 [m]	10120 [ft] 3084 [m]	36°13.029' N	115°02.038' W	

ATIS	NELLIS GROUND	NELLIS TOWER	NELLIS CONTROL	TACAN	ILS RWY 21L	NELLIS EAST	NELLIS WEST
270.100 MHz	275.800   121.800	327.000   132.55	317.525	LSV 12X	109.10 Mhz	384.400	385.000

# FYTTR THREE DEPARTURE IFR CHART | VALID 2014 LAS VEGAS, NEVADA

ATIS  
 270.100  
 NELLIS GROUND  
 275.800  
 NELLIS TOWER  
 327.000  
 NELLIS CONTROL  
 317.525  
 NELLIS DEP/APP EAST  
 384.400  
 BLACKJACK  
 377.800

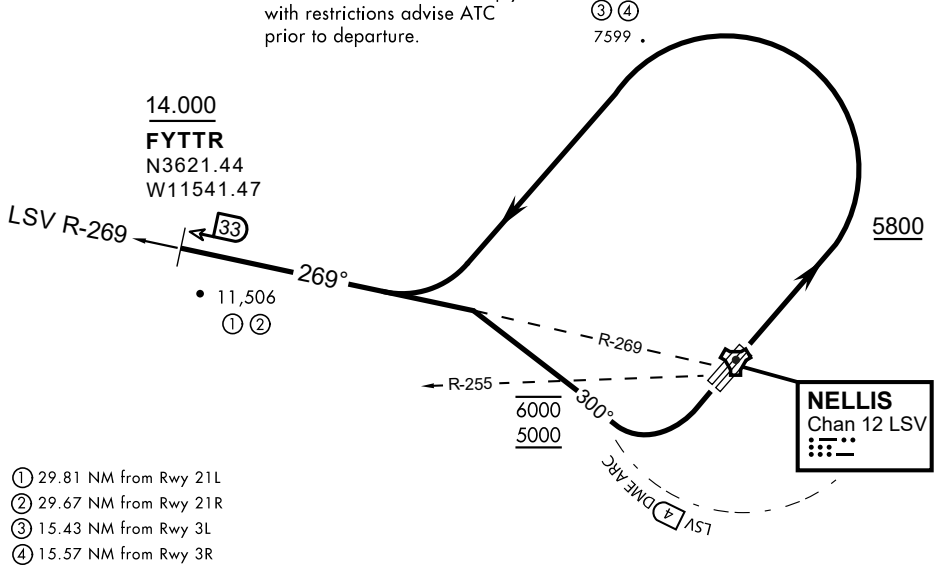


Rwy	Knots	60	120	180	240	300	360
3L (a)	V/V(fpm)	394	788	1182	1576	1970	2364
3R (a)	V/V(fpm)	392	784	1176	1568	1960	2352
21L (b)	V/V(fpm)	388	776	1164	1552	1940	2328
21R (b)	V/V(fpm)	390	780	1170	1560	1950	2340

Minimum Climb Rate

- (a) to 9300
- (b) to 13 500

CAUTION: If unable to comply with restrictions advise ATC prior to departure.



- (1) 29.81 NM from Rwy 21L
- (2) 29.67 NM from Rwy 21R
- (3) 15.43 NM from Rwy 3L
- (4) 15.57 NM from Rwy 3R

## DEPARTURE ROUTE DESCRIPTION

### TAKEOFF RWY 3L/R

- Fly runway heading until reaching 5,800'.
- Then climbing left turn to intercept LSV TACAN R-269 outbound.
- Cross FYTTR at or above 14,000' or as assigned, then via assigned route.

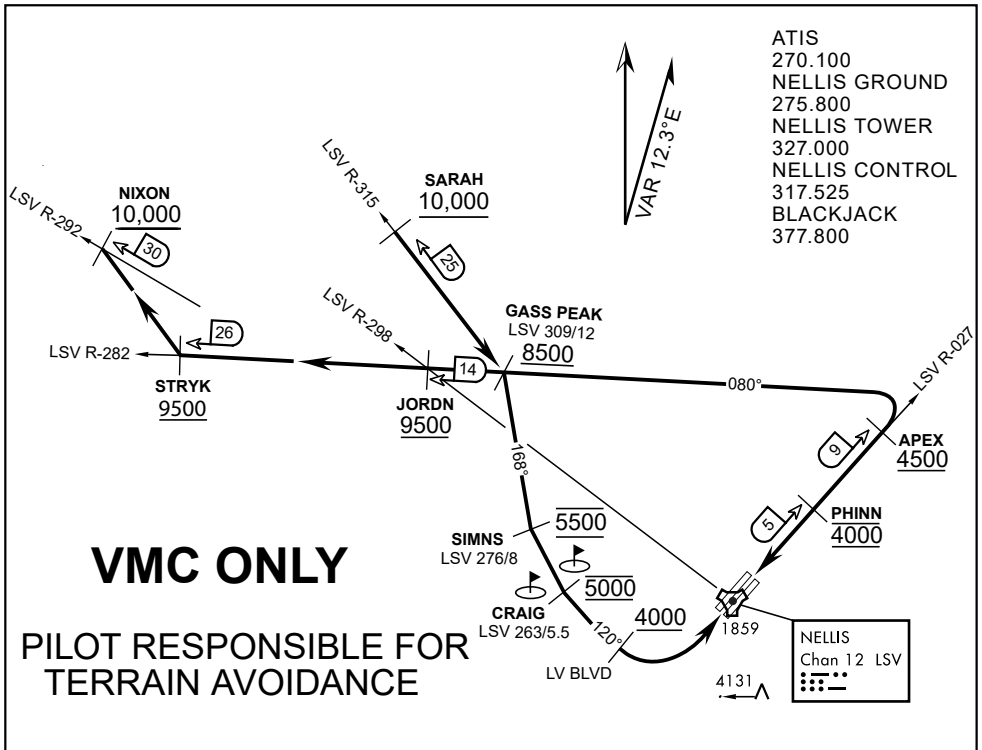
### TAKEOFF RWY 21L/21R

- Turn right to intercept LSV TACAN R-269 outbound.
- Remain within LSV 4 DME until joining LSV R-269
- Cross R-255 between 5,000' and 6,000'.
- Cross FYTTR at or above 14,000' or as assigned, then via assigned route.

### NOISE ABATEMENT PROCEDURES:

Fly according Nellis Noise Abatement instructions as published





ATIS  
270.100  
NELLIS GROUND  
275.800  
NELLIS TOWER  
327.000  
NELLIS CONTROL  
317.525  
BLACKJACK  
377.800

**VMC ONLY**

**PILOT RESPONSIBLE FOR  
TERRAIN AVOIDANCE**

**APPROACH ROUTE DESCRIPTION**

**APPROACH RWY 3L/R**

Cross STRYK at or above 9,500' MSL, proceed direct GASS PEAK. Cross JORDN at or above 9,500' MSL, cross GASS PEAK at or above 8,500' MSL. Proceed direct SIMNS and cross at 5,500' MSL. Cross Las Vegas Blvd at or above 4,000' MSL then to 3,500' MSL for Initial. Remain within 4 DME if LSV on turn to final.

**VFR STRAIGHT-IN RWY 3L/R**

Depart CRAIG & descend to be at 3,000' MSL by Las Vegas Blvd. Do not descend below 3,000' MSL until within 5 DME of LSV or 4 NM of the runway on turn to final.

**APPROACH RWY 21L/R**

Cross STRYK at or above 9,500' MSL, proceed direct GASS PEAK. Cross JORDN at or above 9,500' MSL, cross GASS PEAK at or above 8,500' MSL. Cross APEX at or above 4,500' MSL then direct 5NM initial. Descend to cross PHINN at 4,000' MSL, Inside 5 NM descend to 3,500' MSL.

**VFR STRAIGHT-IN RWY 21L/R**

Cross APEX at 4,000' MSL. Descend to be at 3,000' MSL at PHINN. Descend to 3,000' MSL at LSV 027/5.

**RANGE 63B EXIT**

**SOUTH:** Via NIXON at or above 10,000' MSL, then direct STRYK.

**EAST:** Via SARAH at or above 10,000' MSL, then direct GASS PEAK.



INDIAN SPRINGS, NEVADA

TACAN INS Chan 87	APCH CRS 065°	Rwy ldg TDZE 3133	9002 3113
		Arpt Elev 3113	

INDIAN SPRINGS AF AUX (KINS)

**▽** \* MISSED APPROACH: Straight ahead to INS TACAN, intercept INS R-outbound, cross 17 DME at or above 9500, then direkt KSV TACAN 114

NELLIS CON

CREECH AFB TOWER  
118.30 60.60

GND CON

**NOT FOR CIVIL USE**

FOR USE UNDER BASIC VFR  
WEATHER MINIMUMS ONLY

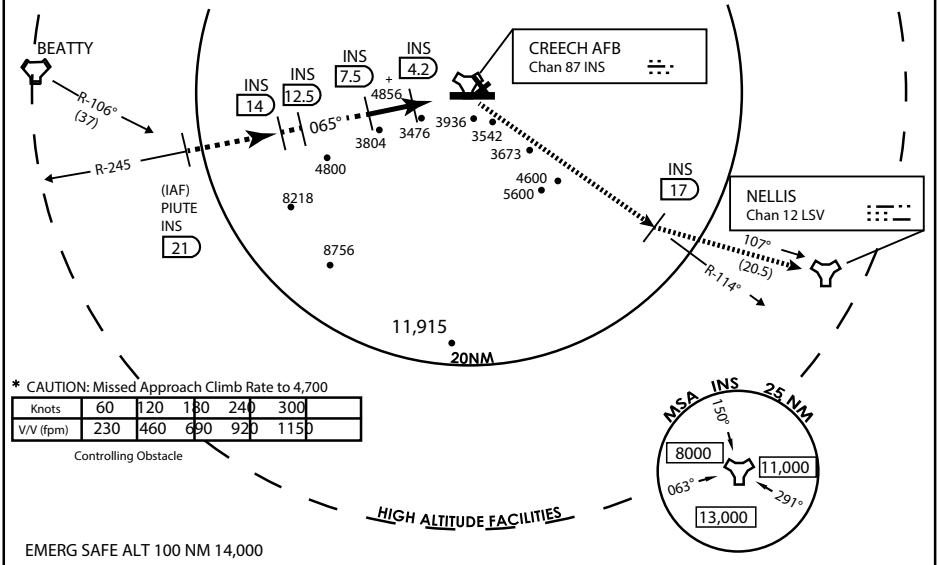
PILOT IS RESPONSIBLE FOR TERRAIN/OBSTACLE AVOIDANCE AND APPROPRIATE VFR CLOUD CLEARANCE FOR ALL

**CAUTION:** Descent gradients are greater than allowed under standard TERPS criteria and inbound course does not meet straight-in criteria

**CAUTION:** Final approach course crosses Runway centerline at MIDFIELD. Maneuvering left of course required prior to landing. Do not Maneuver farther north than the INS R- 258

Modified by viaBog 66 for use with DCS  
NOT FOR REAL LIFE NAVIGATION

Modified by viaBog 66 for use with DCS  
NOT FOR REAL LIFE NAVIGATION



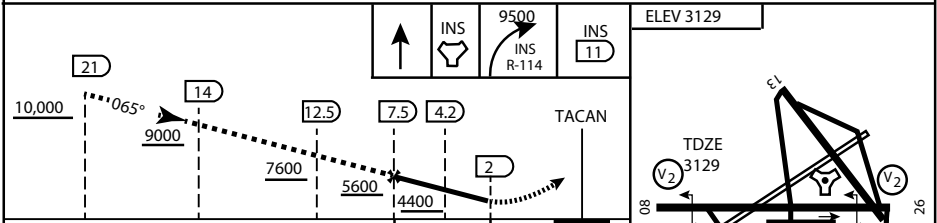
\* CAUTION: Missed Approach Climb Rate to 4,700

Knots	60	120	180	240	300
V/V (fpm)	230	460	690	920	1150

Controlling Obstacle

HIGH ALTITUDE FACILITIES

EMERG SAFE ALT 100 NM 14,000



CATEGORY	A	B	C	D	E
S-8	3760-1 1/2	627 (700-1 1/2)	3760-1 3/4 627 (700-1 3/4)	3760-2 627 (700-2)	3760-2 1/4 627 (700-2 1/4)
CIRCLING	NOT AUTHORIZED				

MIRL Rwy 8-26

CITY OF INDIAN, NEVADA

INDIAN SPRINGS AF AUX (KINS)

(FOR DAY VFR USE ONLY)



# AIRPORT DIAGRAM

476 VFG

CREECH AFB (KINS)  
INDIAN SPRINGS, NEVADA

ATIS  
122.5  
CREECH TOWER  
118.4 360.7 38.65  
GND CON  
118.3 275.8  
CLNC DEL

115°42'W

FIELD  
ELEV  
3127

80  
972 X 150

HOT  
CARGO  
PAD

BAK-12

VAR 12.5° E

WEST  
EOR

115°41'W

476 VFG JAN 2019

476 VFG JAN 2019

CONTROL  
TOWER  
BASE  
OPS

RPA LOLA  
WEST

RPA LOLA  
EAST

LOLA /  
HUNG  
ORDNANCE

199 X 100  
ELEV  
3127  
RUNWAY  
31/13  
MQ/RQ-1  
ONLY

9002 X 150

4064 X 100

258.5°

860 X 100  
313.8°

BAK-12

ELEV  
3127

115°40'W

EAST  
EOR

1030 X 150  
26

# AIRPORT DIAGRAM

INDIAN SPRINGS, NEVADA  
CREECH AFB (KINS)