

MISSION DATA CARD

OPORD	Callsign	Mission	Date/Time			
3539/2025	Nazgul 6	Training	132000JAN25			
Task						Freq
AO	Range 66					262.45
Departure			Recovery			
FYTTR THREE			STRYK			
#	Callsign	Pilot	IFF	TCN	LSR	NET
-1	Nazgul 6-1	Striver	1161	1Y	1561	
-2	Nazgul 6-2	Tank	1162	64Y	1562	
-3	Nazgul 6-3	Razorback	1163	64X	1563	

LOADOUT

A/A	2xA9M, 2xA120C	GUN	100% SAPHEI
A/G	3xG311B, 4xG12	CHF	120
POD	TGT, NAV	FLR	60
TKS	FT610	FUEL	100%

TOLD

	Takeoff	Target	Joker	Bingo	Land
FUEL	26553				

AIRBASES

	Name	TCN	ATIS	GND	TWR	RWY	Elev	ILS
Dep	Nellis AFB	12X	270.1	275.8	327.0	21L	1850	109.1
Arr	Nellis AFB	12X	270.1	275.8	327.0	21L	1850	109.1

FLIGHTPLAN

#	Name	Navaid/Coords/DME	ALT	TOT
1	FYTTR	LSV 269/33 (N36 21.440 W115 41.470)	14000	
2	T66.01	N35 34.881 W116 42.391		
3	NIXON	LSV 292/30 (N36 32.010 W115 32.250)	10000	
4	FYTTR	LSV 269/33 (N36 21.440 W115 41.470)	9500	
5	APEX	LSV 027/09 (N36 21.580 W114 54.340)	4500	

SUPPORT**AWACS**

Callsign

Freq

ALT

Pos

MAGIC

377.8

FL270

N3749 W11417 - N3713 W11446

OTHER FLIGHTS

Callsign	Mission	Airframe	Freq	TCN	Grpld	Laser
Tiger 1	Training	2x F/A-18C	261.15	1/64	1	155X
AO		Task	SAM Training			
Raptor 1	Training	4x F-16C	134.0	1/64		162X
AO	EAST NTTR	Task	Tac Formation			
Raptor 2	Training	4x F-16C	134.5	1/64		162X
AO	EAST NTTR	Task	Tac Formation			
Cowboy 1	Training	2x AH-64D	133.5	1/64		170X
AO	LATNC	Task				
Edelweiss 5	Training	2x F/A-18C	264.55	12/75	1	175X
AO	SAM Training Area	Task	LCR Check Testflight, SAM, BVR, AAR			
T-Rex 3	Training	4x A-10C	132.25	1/64	25	165X
AO	Range 64	Task	Gun Employment Moving Targets			
Panther 3	Training	2x F/A-18C	261.35	1/64		157X
AO	RANGE 63 Circle	Task				
Tiger 2	Training	3x F/A-18C	261.25	2/65	2	156X
AO		Task	SAM Training			
Monster 4	Training	2x A-10C	132.15	1/64	26	155X
AO	Range 64	Task	Gun Employment Moving Targets			
Balrog 7	Training	4x F-15E	262.45	1/64		156X
AO	Range 66	Task				

RADIO CHANNELS

#	Freq	Name
1		Flight/Squadron specific
2	289.4	Nellis Clearance Delivery
3	275.8	Nellis Ground
4	327.0	Nellis Tower
5	385.4	Nellis Approach/Departure West
6	273.55	Nellis Approach/Departure East
7	317.525	Nellis Control -- Sally
8	254.4	Nellis Control-- Lee
9	305.6	SOF Bullseye
10	343.725	EMERGENCY SINGLE FRQ
11	270.1	Nellis ATIS
12	360.625	Creech AFB Tower
13	250.1	HAVE QUICK 13
14	251.1	HAVE QUICK 14
15	252.1	HAVE QUICK 15
16	377.8	Blackjack
17	265.0	KC-135 AR-641A
18	360.8	KC-135MPRS AR-635
19	319.8	KC-135MPRS AR-625
20	300.05	KC-135 AR-231V

RAMROD

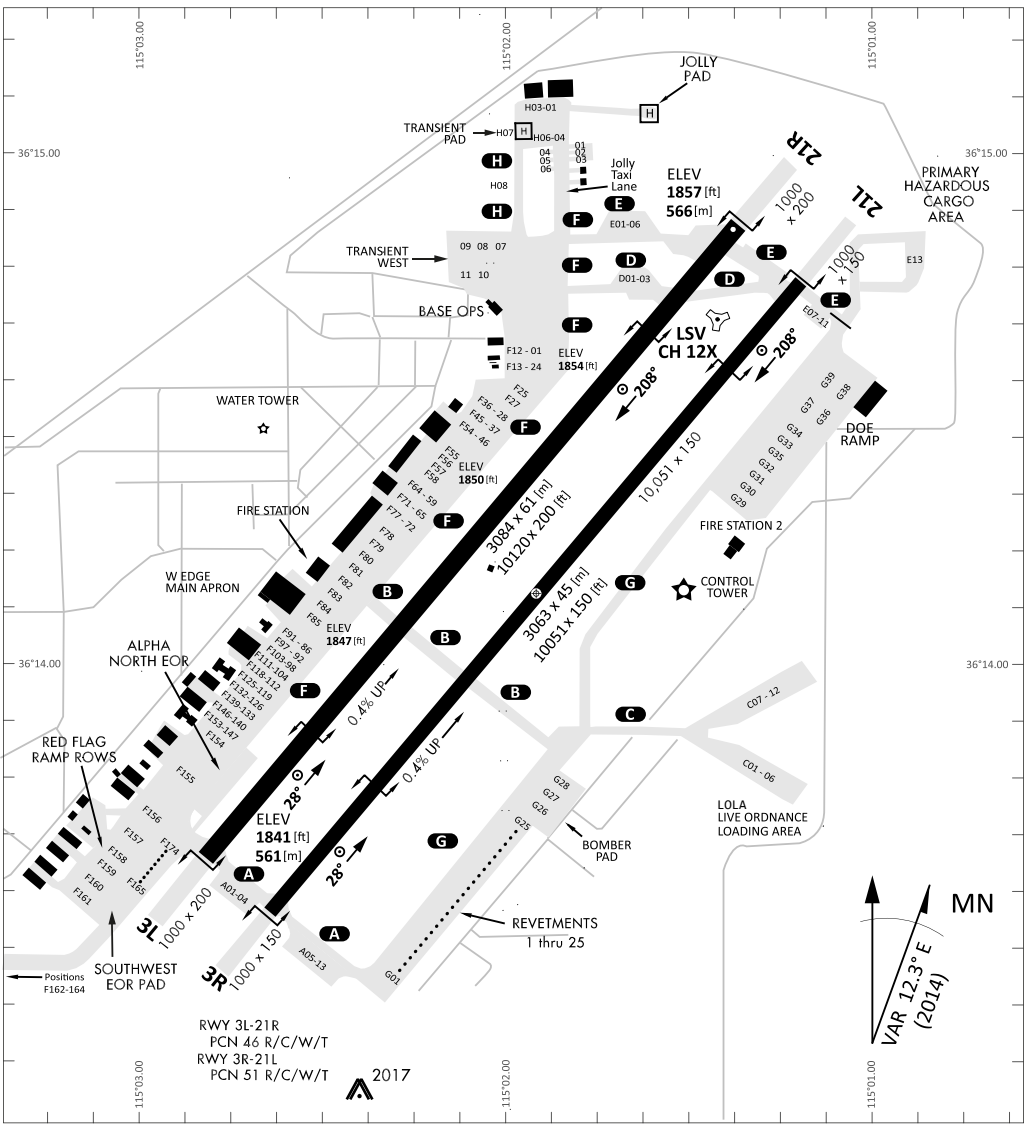
0	1	2	3	4	5	6	7	8	9
R	H	E	U	M	A	T	I	C	S

KTC 1400 C

	0	1	2	3	4	5	6	7	8	9
A	QEJS	OPI	BUK	YV	GH	NDR	WF	TX	AM	LC
B	DIRB	TLV	JCS	NO	HP	WEQ	YF	GK	XM	UA
C	JQBS	LOG	CUR	PM	DV	TAI	KY	WX	FH	NE
D	MRJK	NBF	EDG	OY	VQ	ULT	IS	XH	CP	AW
E	DCVH	EMF	BLA	RU	IN	YSK	WX	JG	PQ	OT
F	YIJF	RQL	UOV	EX	CH	TWM	SA	GD	KB	PN
G	YGXD	IWF	VUC	KP	TO	NLB	JH	QR	MA	ES
H	DUWH	EBA	TLV	XI	KF	PRN	OC	MY	SJ	GQ
I	KOYI	UWP	FQS	VH	LJ	NCT	MR	XA	GB	DE
J	QVAN	EJU	RYI	TK	CG	SWB	MP	LX	OD	FH
K	NETO	AHR	KBC	UQ	YI	LVJ	PW	FX	GS	DM
L	EDPI	JBW	QNO	YG	TV	RCS	KL	MF	UX	AH
M	GHLC	FSK	YQU	RO	VA	EIX	BW	PJ	DT	MN
N	TVWP	AFJ	QSO	KY	BL	RDM	IG	EH	XU	CN
O	KJSI	XAU	MYP	FV	HN	GTQ	WB	LD	EC	RO
P	EABD	QPY	NCJ	UK	GX	SFL	OH	VM	IW	RT
Q	YAQX	ILR	ODK	WH	UN	FVS	BE	MG	CP	JT
R	JLIP	HEC	FQV	NB	YS	DKX	AW	MU	TG	OR
S	GLHK	NVM	EXW	UJ	QC	SAP	FB	OT	IR	DY
T	VCUG	MYL	NJH	QE	FI	ARK	SD	XT	OB	WP
U	KXCL	EJN	DAU	OF	PB	HYV	GW	SR	TM	IQ
V	GVTF	JRQ	LIA	KY	XC	HSW	UB	MD	EP	NO
W	TGFD	ILC	OSW	BA	NV	MPX	UH	RQ	JE	YK
X	BQRK	TSF	AYV	NI	HX	ELU	CG	WP	OM	JD
Y	QKJR	LNA	USC	HB	XW	DEF	TM	VO	YP	IG

NAVAIDS

Id	Name	Channel	Position	Elevation
BCE	Bryce Canyon	75	N3741.35 W11218.23	9040
BIH	Bishop	33	N3722.62 W11821.99	4114
BLD	Boulder	114	N3559.75 W11451.82	3650
BTY	Beatty	94	N3648.54 W11644.86	2925
CDC	Cedar City	120	N3747.24 W11304.90	5463
DAG	Daggett	79	N3457.75 W11634.69	1760
EED	Needles	99	N3445.96 W11428.43	650
GFS	Goffs	91	N3507.87 W11510.59	4019
GRL	Groom Lake	18	N3713.91 W11548.16	4475
HEC	Hector	74	N3447.83 W11627.78	1854
ILC	Wilson Creek	110	N3815.02 W11423.65	9318
INS	Creech AFB	87	N3635.20 W11540.12	3101
LAS	McCarran Intl	116	N3604.78 W11509.59	2142
LSV	Nellis	12	N3614.68 W11501.50	1864
MLF	Milford	58	N3821.62 W11300.79	4977
MMM	Mormon Mesa	90	N3646.16 W11416.65	2120
MVA	Mina	98	N3833.92 W11801.97	7860
OAL	Coale Dale	124	N3800.20 W11746.23	4800
PGS	Peach Springs	57	N3537.48 W11332.67	4754
TPH	Tonopah Muni	119	N3801.84 W11702.01	5330
TQQ	Silverbow	77	N3748.00 W11647.00	5500
UTI	St George	23	N3705.29 W11335.53	2871



RWY 3L-21R
 PCN 46 R/C/W/T
 RWY 3R-21L
 PCN 51 R/C/W/T
 2017

PAR	RWY	CAT	MINIMA		ARP	ELEV	Scale 1:35'500 0 300 600 900 1200 1500 [m] 0 1000 2000 3000 4000 5000 [ft]
	21L	A B D E	2057 - 0.8 200 (200-0.8/1.6)	GS 3°	36° 14.060° N	1857 [ft]	
	3R	A B D E	2057 - 0.8 200 (200-0.8/1.6)	GS 3°	115° 01.058° W	566 [m]	
SRA	21R	A C D E	2257 - 1.2 350 (350-1.2/1.6)				
	3L	A C D E	2257 - 1.2 350 (350-1.2/1.6)				

RWY	TORA	TODA	ASDA	LDA	PSN	THR	ALS
21L	10051 [ft] 3063 [m]	11051 [ft] 3368 [m]	11051 [ft] 3368 [m]	10051 [ft] 3063 [m]	36°14.043' N	115°01.018' W	⊕
3R	10120 [ft] 3084 [m]	11120 [ft] 3398 [m]	11120 [ft] 3398 [m]	10120 [ft] 3084 [m]	36°13.029' N	115°02.038' W	

ATIS	NELLIS GROUND	NELLIS TOWER	NELLIS CONTROL	TACAN	ILS RWY 21L	NELLIS EAST	NELLIS WEST
270.100 MHz	275.800 121.800	327.000 132.55	317.525	LSV 12X	109.10 Mhz	384.400	385.000

FYTTTR THREE DEPARTURE IFR CHART | VALID 2014 LAS VEGAS, NEVADA

ATIS
270.100
NELLIS GROUND
275.800
NELLIS TOWER
327.000
NELLIS CONTROL
317.525
NELLIS DEP/APP EAST
384.400
BLACKJACK
377.800



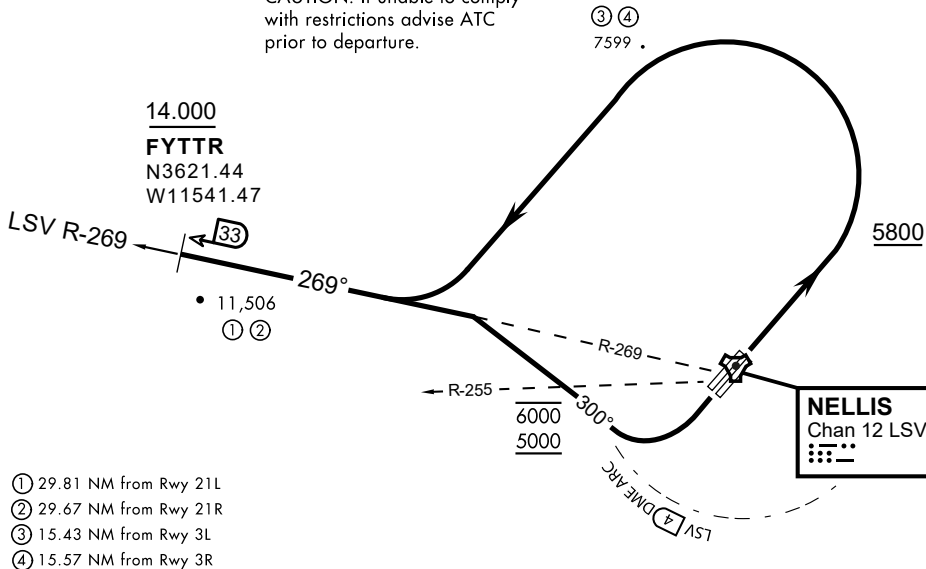
Rwy	Knots	60	120	180	240	300	360
3L (a)	V/V(fpm)	394	788	1182	1576	1970	2364
3R (a)	V/V(fpm)	392	784	1176	1568	1960	2352
21L (b)	V/V(fpm)	388	776	1164	1552	1940	2328
21R (b)	V/V(fpm)	390	780	1170	1560	1950	2340

Minimum Climb Rate

(a) to 9300

(b) to 13 500

CAUTION: If unable to comply with restrictions advise ATC prior to departure.



- ① 29.81 NM from Rwy 21L
- ② 29.67 NM from Rwy 21R
- ③ 15.43 NM from Rwy 3L
- ④ 15.57 NM from Rwy 3R

DEPARTURE ROUTE DESCRIPTION

TAKEOFF RWY 3L/R

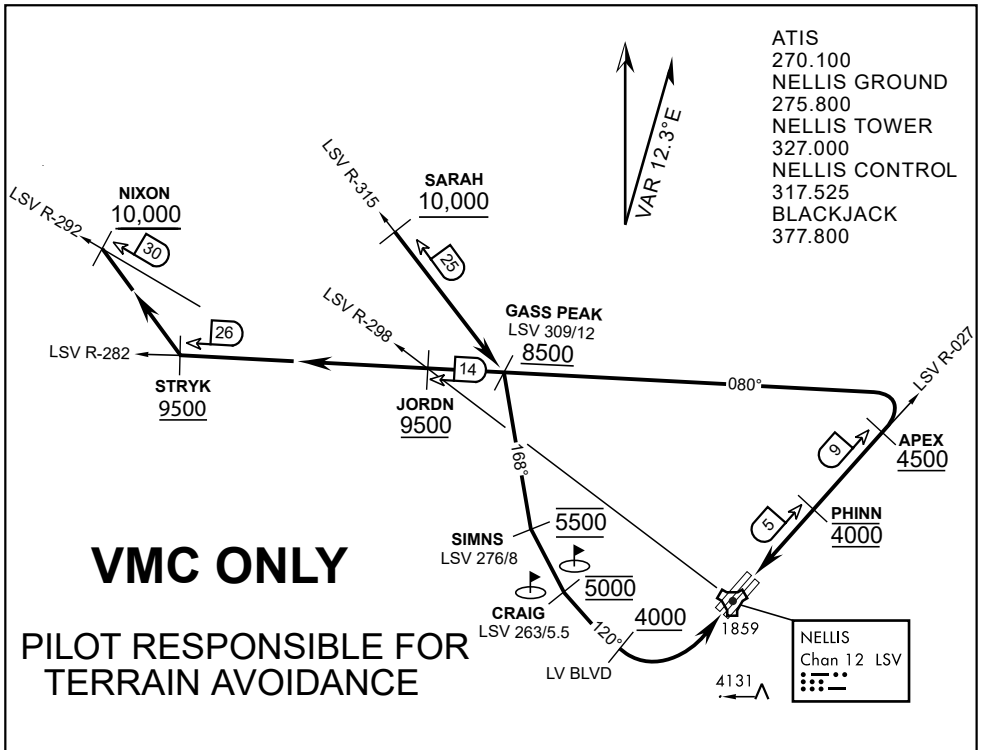
- Fly runway heading until reaching 5,800'.
- Then climbing left turn to intercept LSV TACAN R-269 outbound.
- Cross FYTTTR at or above 14,000' or as assigned, then via assigned route.

TAKEOFF RWY 21L/21R

- Turn right to intercept LSV TACAN R-269 outbound.
- Remain within LSV 4 DME until joining LSV R-269
- Cross R-255 between 5,000' and 6,000'.
- Cross FYTTTR at or above 14,000' or as assigned, then via assigned route.

NOISE ABATEMENT PROCEDURES:

Fly according Nellis Noise Abatement instructions as published



- ATIS
- 270.100
- NELLIS GROUND
- 275.800
- NELLIS TOWER
- 327.000
- NELLIS CONTROL
- 317.525
- BLACKJACK
- 377.800

VMC ONLY

PILOT RESPONSIBLE FOR TERRAIN AVOIDANCE

APPROACH ROUTE DESCRIPTION

APPROACH RWY 3L/R

Cross STRYK at or above 9,500' MSL, proceed direct GASS PEAK. Cross JORDN at or above 9,500' MSL, cross GASS PEAK at or above 8,500' MSL. Proceed direct SIMNS and cross at 5,500' MSL. Cross Las Vegas Blvd at or above 4,000' MSL then to 3,500' MSL for Initial. Remain within 4 DME if LSV on turn to final.

VFR STRAIGHT-IN RWY 3L/R

Depart CRAIG & descend to be at 3,000' MSL by Las Vegas Blvd. Do not descend below 3,000' MSL until within 5 DME of LSV or 4 NM of the runway on turn to final.

APPROACH RWY 21L/R

Cross STRYK at or above 9,500' MSL, proceed direct GASS PEAK. Cross JORDN at or above 9,500' MSL, cross GASS PEAK at or above 8,500' MSL. Cross APEX at or above 4,500' MSL then direct 5NM initial. Descend to cross PHINN at 4,000' MSL, Inside 5 NM descend to 3,500' MSL.

VFR STRAIGHT-IN RWY 21L/R

Cross APEX at 4,000' MSL. Descend to be at 3,000' MSL at PHINN. Descend to 3,000' MSL at LSV 027/5.

RANGE 63B EXIT

- SOUTH:** Via NIXON at or above 10,000' MSL, then direct STRYK.
- EAST:** Via SARAH at or above 10,000' MSL, then direct GASS PEAK.