

**MISSION DATA CARD**

OPORD		Callsign		Mission		Date/Time		
3534/2025		Raptor 1		Training		132000JAN25		
Task	Tac Formation					Freq		
AO	EAST NTTR					134.0		
Departure				Recovery				
DREAM FOUR				STRYK				
#	Callsign		Pilot		IFF	TCN	LSR	NET
-1	Raptor 1-1		Nerkub		1611	1Y	1621	
-2	Raptor 1-2		Beathovenz		1612	64Y	1622	
-3	Raptor 1-3		Newbie		1613	64X	1623	
-4	Raptor 1-4		Hercules		1614	1X	1624	

**LOADOUT**

A/A	2xA120C, 2xA9X				GUN	100% HEI-T	
A/G					CHF	120	
POD					FLR	0	
TKS	3xFT300				FUEL	100%	

**TOLD**

	Takeoff	Target	Joker	Bingo	Land
FUEL	13172				

**AIRBASES**

	Name	TCN	ATIS	GND	TWR	RWY	Elev	ILS
Dep	Nellis AFB	12X	270.1	275.8	327.0	21L	1850	109.1
Arr	Nellis AFB	12X	270.1	275.8	327.0	21L	1850	109.1
Div	Creech AFB	87X	290.45	275.8	360.6			

**FLIGHTPLAN**

#	Name	Navaid/Coords/DME	ALT	TOT
1	DREAM	N37 10 20.400 W114 59 31.800	15000	
2	BIGHORN	N37 52 W115 01 60	15000	
3	3	N37 52 00.640 W113 00 02.789	15000	
4	4	N36 59 55.118 W112 59 55.025	15000	
5	5	N37 00 10.995 W114 59 20.189	15000	
6	SARAH	N36 36 27 W115 18 01.800	15000	
7	GASS PEAK	N36 24 08.400 W115 10 39.600	15000	
8	SIMNS	N36 17 20.400 W115 10 45	15000	
9	CRAIG	N36 15 15 W115 08 16.200	15000	
10	Nellis AFB	N36 13 32 W115 02 37	1500	

**SUPPORT****Tanker**

Callsign	TCN	Freq	ALT	TAS
TEXACO 2	95Y	289.7	FL220	420
Pos	Pegasus.1: CDC 166/102 (N3730 W11440)			

## OTHER FLIGHTS

Callsign	Mission	Airframe	Freq	TCN	Grpld	Laser
Tiger 1	Training	2x F/A-18C	261.15	1/64	1	155X
AO		Task	SAM Training			
Raptor 2	Training	4x F-16C	134.5	1/64		162X
AO	EAST NTTR	Task	Tac Formation			
Cowboy 1	Training	2x AH-64D	133.5	1/64		170X
AO	LATNC	Task				
Edelweiss 5	Training	2x F/A-18C	264.55	12/75	1	175X
AO	SAM Training Area	Task	LCR Check Testflight, SAM, BVR, AAR			
T-Rex 3	Training	4x A-10C	132.25	1/64	25	165X
AO	Range 64	Task	Gun Employment Moving Targets			
Nazgul 6	Training	4x F-15E	262.45	1/64		156X
AO	Range 66	Task				
Panther 3	Training	2x F/A-18C	261.35	1/64		157X
AO	RANGE 63 Circle	Task				
Tiger 2	Training	3x F/A-18C	261.25	2/65	2	156X
AO		Task	SAM Training			
Monster 4	Training	2x A-10C	132.15	1/64	26	155X
AO	Range 64	Task	Gun Employment Moving Targets			
Balrog 7	Training	4x F-15E	262.45	1/64		156X
AO	Range 66	Task				

**RADIO CHANNELS**

#	Freq	Name
1		Flight/Squadron specific
2	289.4	Nellis Clearance Delivery
3	275.8	Nellis Ground
4	327.0	Nellis Tower
5	385.4	Nellis Approach/Departure West
6	273.55	Nellis Approach/Departure East
7	317.525	Nellis Control -- Sally
8	254.4	Nellis Control-- Lee
9	305.6	SOF Bullseye
10	343.725	EMERGENCY SINGLE FRQ
11	270.1	Nellis ATIS
12	360.625	Creech AFB Tower
13	250.1	HAVE QUICK 13
14	251.1	HAVE QUICK 14
15	252.1	HAVE QUICK 15
16	377.8	Blackjack
17	265.0	KC-135 AR-641A
18	360.8	KC-135MPRS AR-635
19	319.8	KC-135MPRS AR-625
20	300.05	KC-135 AR-231V

**RAMROD**

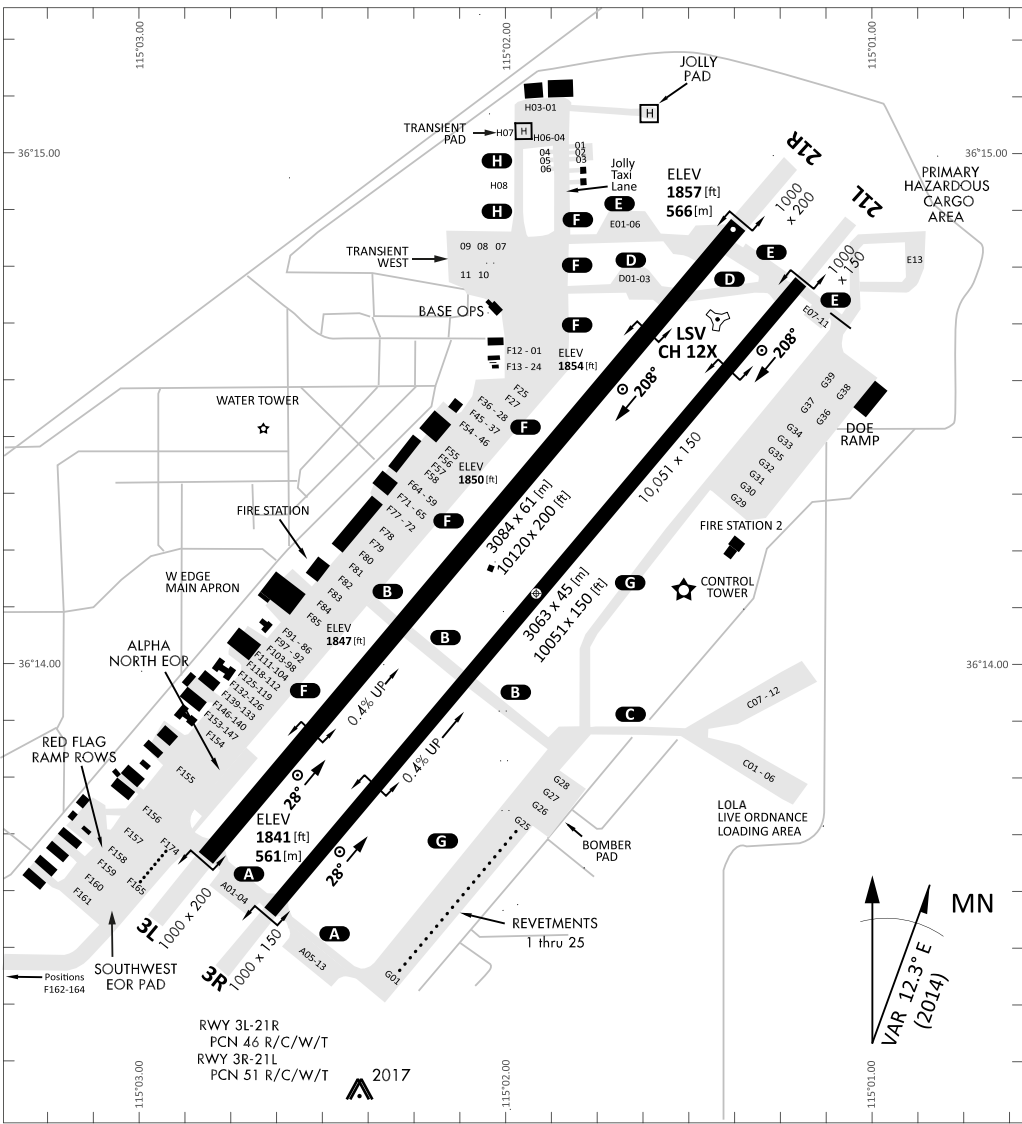
0	1	2	3	4	5	6	7	8	9
R	H	E	U	M	A	T	I	C	S

**KTC 1400 C**

	0	1	2	3	4	5	6	7	8	9
A	QEJS	OPI	BUK	YV	GH	NDR	WF	TX	AM	LC
B	DIRB	TLV	JCS	NO	HP	WEQ	YF	GK	XM	UA
C	JQBS	LOG	CUR	PM	DV	TAI	KY	WX	FH	NE
D	MRJK	NBF	EDG	OY	VQ	ULT	IS	XH	CP	AW
E	DCVH	EMF	BLA	RU	IN	YSK	WX	JG	PQ	OT
F	YIJF	RQL	UOV	EX	CH	TWM	SA	GD	KB	PN
G	YGXD	IWF	VUC	KP	TO	NLB	JH	QR	MA	ES
H	DUWH	EBA	TLV	XI	KF	PRN	OC	MY	SJ	GQ
I	KOYI	UWP	FQS	VH	LJ	NCT	MR	XA	GB	DE
J	QVAN	EJU	RYI	TK	CG	SWB	MP	LX	OD	FH
K	NETO	AHR	KBC	UQ	YI	LVJ	PW	FX	GS	DM
L	EDPI	JBW	QNO	YG	TV	RCS	KL	MF	UX	AH
M	GHLC	FSK	YQU	RO	VA	EIX	BW	PJ	DT	MN
N	TVWP	AFJ	QSO	KY	BL	RDM	IG	EH	XU	CN
O	KJSI	XAU	MYP	FV	HN	GTQ	WB	LD	EC	RO
P	EABD	QPY	NCJ	UK	GX	SFL	OH	VM	IW	RT
Q	YAQX	ILR	ODK	WH	UN	FVS	BE	MG	CP	JT
R	JLIP	HEC	FQV	NB	YS	DKX	AW	MU	TG	OR
S	GLHK	NVM	EXW	UJ	QC	SAP	FB	OT	IR	DY
T	VCUG	MYL	NJH	QE	FI	ARK	SD	XT	OB	WP
U	KXCL	EJN	DAU	OF	PB	HYV	GW	SR	TM	IQ
V	GVTF	JRQ	LIA	KY	XC	HSW	UB	MD	EP	NO
W	TGFD	ILC	OSW	BA	NV	MPX	UH	RQ	JE	YK
X	BQRK	TSF	AYV	NI	HX	ELU	CG	WP	OM	JD
Y	QKJR	LNA	USC	HB	XW	DEF	TM	VO	YP	IG

**NAVAIDS**

<b>Id</b>	<b>Name</b>	<b>Channel</b>	<b>Position</b>	<b>Elevation</b>
BCE	Bryce Canyon	75	N3741.35 W11218.23	9040
BIH	Bishop	33	N3722.62 W11821.99	4114
BLD	Boulder	114	N3559.75 W11451.82	3650
BTY	Beatty	94	N3648.54 W11644.86	2925
CDC	Cedar City	120	N3747.24 W11304.90	5463
DAG	Daggett	79	N3457.75 W11634.69	1760
EED	Needles	99	N3445.96 W11428.43	650
GFS	Goffs	91	N3507.87 W11510.59	4019
GRL	Groom Lake	18	N3713.91 W11548.16	4475
HEC	Hector	74	N3447.83 W11627.78	1854
ILC	Wilson Creek	110	N3815.02 W11423.65	9318
INS	Creech AFB	87	N3635.20 W11540.12	3101
LAS	McCarran Intl	116	N3604.78 W11509.59	2142
LSV	Nellis	12	N3614.68 W11501.50	1864
MLF	Milford	58	N3821.62 W11300.79	4977
MMM	Mormon Mesa	90	N3646.16 W11416.65	2120
MVA	Mina	98	N3833.92 W11801.97	7860
OAL	Coale Dale	124	N3800.20 W11746.23	4800
PGS	Peach Springs	57	N3537.48 W11332.67	4754
TPH	Tonopah Muni	119	N3801.84 W11702.01	5330
TQQ	Silverbow	77	N3748.00 W11647.00	5500
UTI	St George	23	N3705.29 W11335.53	2871



RWY 3L-21R  
 PCN 46 R/C/W/T  
 RWY 3R-21L  
 PCN 51 R/C/W/T  
 2017

PAR	RWY	CAT	MINIMA		ARP	ELEV	Scale 1:35'500	
	21L	A B D E	2057 - 0.8 200	(200-0.8/1.6) GS 3°	36° 14.060° N 115° 01.058° W	1857 [ft] 566 [m]	0 300 600 900 1200 1500 [m]	
	3R	A B D E	2057 - 0.8 200	(200-0.8/1.6) GS 3°			0 1000 2000 3000 4000 5000 [ft]	
SRA	21R	A C D E	2257 - 1.2 350	(350-1.2/1.6)				
	3L	A C D E	2257 - 1.2 350	(350-1.2/1.6)				

RWY	TORA	TODA	ASDA	LDA	PSN	THR	ALS
21L	10051 [ft] 3063 [m]	11051 [ft] 3368 [m]	11051 [ft] 3368 [m]	10051 [ft] 3063 [m]	36°14.043' N	115°01.018' W	⊕
3R	10120 [ft] 3084 [m]	11120 [ft] 3398 [m]	11120 [ft] 3398 [m]	10120 [ft] 3084 [m]	36°13.029' N	115°02.038' W	

ATIS	NELLIS GROUND	NELLIS TOWER	NELLIS CONTROL	TACAN	ILS RWY 21L	NELLIS EAST	NELLIS WEST
270.100 MHz	275.800   121.800	327.000   132.55	317.525	LSV 12X	109.10 Mhz	384.400	385.000



# DREAM FOUR DEPARTURE DREAM4 | VALID 2014

**NELLIS AFB (KLSV)**  
LAS VEGAS, NEVADA

ATIS  
270.100  
NELLIS GROUND  
275.800  
NELLIS TOWER  
327.000  
NELLIS CONTROL  
317.525  
NELLIS DEP/APP EAST  
384.400  
BLACKJACK  
377.800

**DREAM**  
N3710.34  
W11459.53

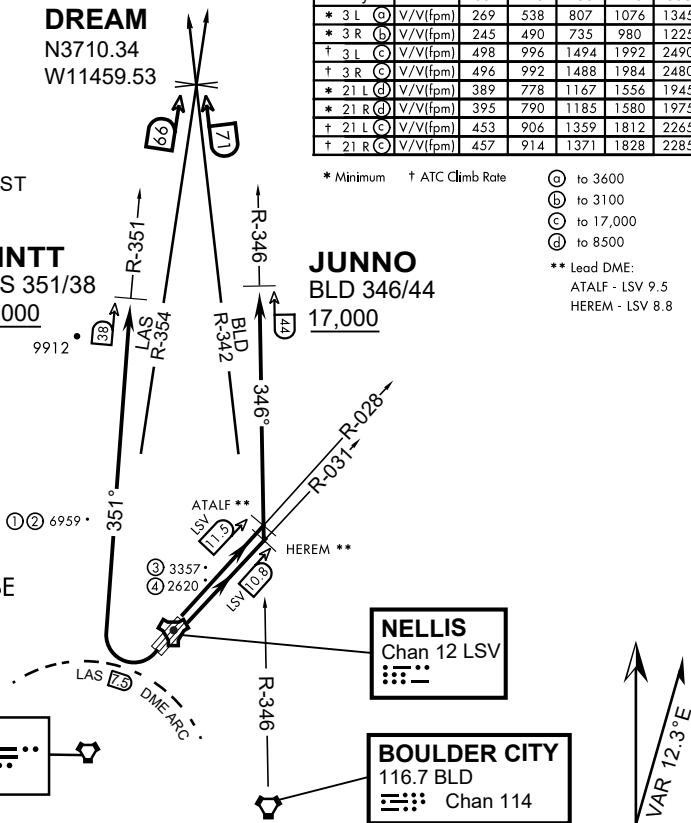
**MINTT**  
LAS 351/38  
17,000

Rwy	Knots	60	120	180	240	300	360
* 3 L (A)	V/V(fpm)	269	538	807	1076	1345	1614
* 3 R (B)	V/V(fpm)	245	490	735	980	1225	1470
† 3 L (C)	V/V(fpm)	498	996	1494	1992	2490	2988
† 3 R (C)	V/V(fpm)	496	992	1488	1984	2480	2976
* 21 L (D)	V/V(fpm)	389	778	1167	1556	1945	2334
* 21 R (D)	V/V(fpm)	395	790	1185	1580	1975	2370
† 21 L (C)	V/V(fpm)	453	906	1359	1812	2265	2718
† 21 R (C)	V/V(fpm)	457	914	1371	1828	2285	2742

\* Minimum † ATC Climb Rate

- (A) to 3600
  - (B) to 3100
  - (C) to 17,000
  - (D) to 8500
- \*\* Lead DME:  
ATALF - LSV 9.5  
HEREM - LSV 8.8

- ① 12.24 NM from Rwy 21R
- ② 12.40 NM from Rwy 21L
- ③ 5.67 NM from Rwy 3L
- ④ 5.85 NM from Rwy 3R



## NOT FOR CIVIL USE

CAUTION: If unable to comply with restrictions advise ATC prior to departure.

## DEPARTURE ROUTE DESCRIPTION

### TAKE-OFF RWY 3L

- Fly runway heading to intercept the LSV TACAN R-028 then direct ATALF, intercept the BLD VORTAC R-346 then direct JUNNO, cross JUNNO at or above 17,000, then via assigned route.

### TAKE-OFF RWY 3R

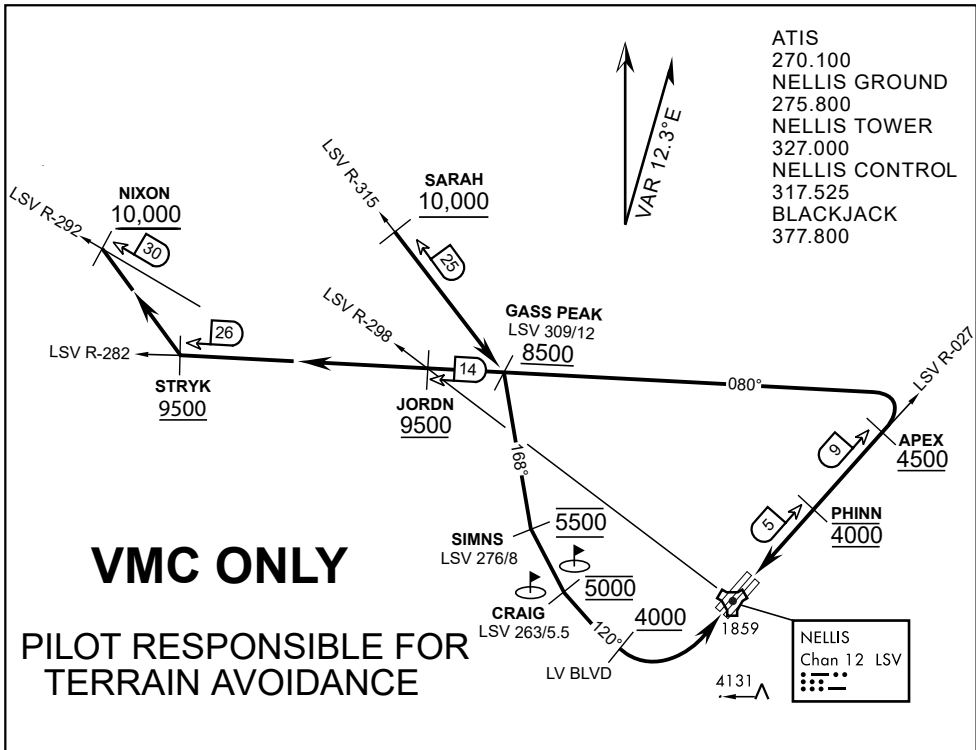
- Fly runway heading to intercept the LSV TACAN R-031 then direct HEREM, intercept the BLD VORTAC R-346 then direct JUNNO, cross JUNNO at or above 17,000, then via assigned route.

### TAKE-OFF RWY 21L/R

- Turn right to intercept LAS VORTAC R-351 outbound. Remain North of LAS 7.5 DME turning Northbound. Intercept LAS R-351 between 5000 and 6000, do not proceed West of LAS R-351. Cross MINTT at or above 17,000, then via assigned route.

NOISE ABATMENT PROCEDURES: Fly acc. Nellis Noise Abatement instructions

# DREAM FOUR DEPARTURE (DREAM4 • DREAM)



**APPROACH ROUTE DESCRIPTION**

**APPROACH RWY 3L/R**

Cross STRYK at or above 9,500' MSL, proceed direct GASS PEAK. Cross JORDN at or above 9,500' MSL, cross GASS PEAK at or above 8,500' MSL. Proceed direct SIMNS and cross at 5,500' MSL. Cross Las Vegas Blvd at or above 4,000' MSL then to 3,500' MSL for Initial. Remain within 4 DME if LSV on turn to final.

**VFR STRAIGHT-IN RWY 3L/R**

Depart CRAIG & descend to be at 3,000' MSL by Las Vegas Blvd. Do not descend below 3,000' MSL until within 5 DME of LSV or 4 NM of the runway on turn to final.

**APPROACH RWY 21L/R**

Cross STRYK at or above 9,500' MSL, proceed direct GASS PEAK. Cross JORDN at or above 9,500' MSL, cross GASS PEAK at or above 8,500' MSL. Cross APEX at or above 4,500' MSL then direct 5NM initial. Descend to cross PHINN at 4,000' MSL, Inside 5 NM descend to 3,500' MSL.

**VFR STRAIGHT-IN RWY 21L/R**

Cross APEX at 4,000' MSL. Descend to be at 3,000' MSL at PHINN. Descend to 3,000' MSL at LSV 027/5.

**RANGE 63B EXIT**

**SOUTH:** Via NIXON at or above 10,000' MSL, then direct STRYK.  
**EAST:** Via SARAH at or above 10,000' MSL, then direct GASS PEAK.



INDIAN SPRINGS, NEVADA

TACAN INS Chan 87	APCH CRS 065°	Rwy ldg TDZE 3133	9002 3113
		Arpt Elev 3113	

INDIAN SPRINGS AF AUX (KINS)

**▼** \* MISSED APPROACH: Straight ahead to INS TACAN, intercept INS R-outbound, cross 17 DME at or above 9500, then direkt KSV TACAN 114

NELLIS CON

CREECH AFB TOWER  
118.30 60.60

GND CON

**NOT FOR CIVIL USE**

FOR USE UNDER BASIC VFR  
WEATHER MINIMUMS ONLY

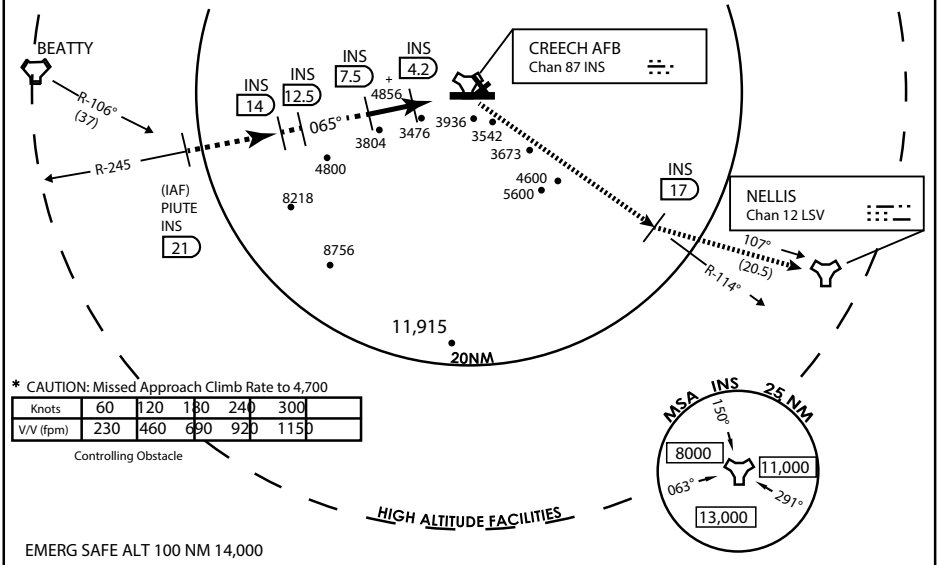
PILOT IS RESPONSIBLE FOR TERRAIN/OBSTACLE AVOIDANCE AND APPROPRIATE VFR CLOUD CLEARANCE FOR ALL

**CAUTION:** Descent gradients are greater than allowed under standard TERPS criteria and inbound course does not meet straight-in criteria

**CAUTION:** Final approach course crosses Runway centerline at MIDFIELD. Maneuvering left of course required prior to landing. Do not Maneuver farther north than the INS R- 258

Modified by viaBog 66 for use with DCS  
NOT FOR REAL LIFE NAVIGATION

Modified by viaBog 66 for use with DCS  
NOT FOR REAL LIFE NAVIGATION

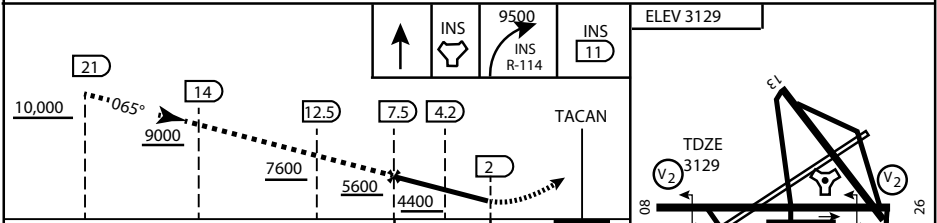


\* CAUTION: Missed Approach Climb Rate to 4,700

Knots	60	120	180	240	300
V/V (fpm)	230	460	690	920	1150

Controlling Obstacle

HIGH ALTITUDE FACILITIES



CATEGORY	A	B	C	D	E
S-8	3760-1 1/2	627 (700-1 1/2)	3760-1 3/4 627 (700-1 3/4)	3760-2 627 (700-2)	3760-2 1/4 627 (700-2 1/4)
CIRCLING	NOT AUTHORIZED				

MIRL Rwy 8-26

CITY OF INDIAN, NEVADA

INDIAN SPRINGS AF AUX (KINS)

(FOR DAY VFR USE ONLY)



# AIRPORT DIAGRAM

476 VFG

CREECH AFB (KINS)  
INDIAN SPRINGS, NEVADA

ATIS  
 122.5  
 CREECH TOWER  
 118.4 360.7 38.65  
 GND CON  
 118.3 275.8  
 CLNC DEL

FIELD  
 ELEV  
 3127

HOT  
 CARGO  
 PAD

VAR 12.5° E

WEST EOR

CONTROL  
 TOWER  
 BASE  
 OPS

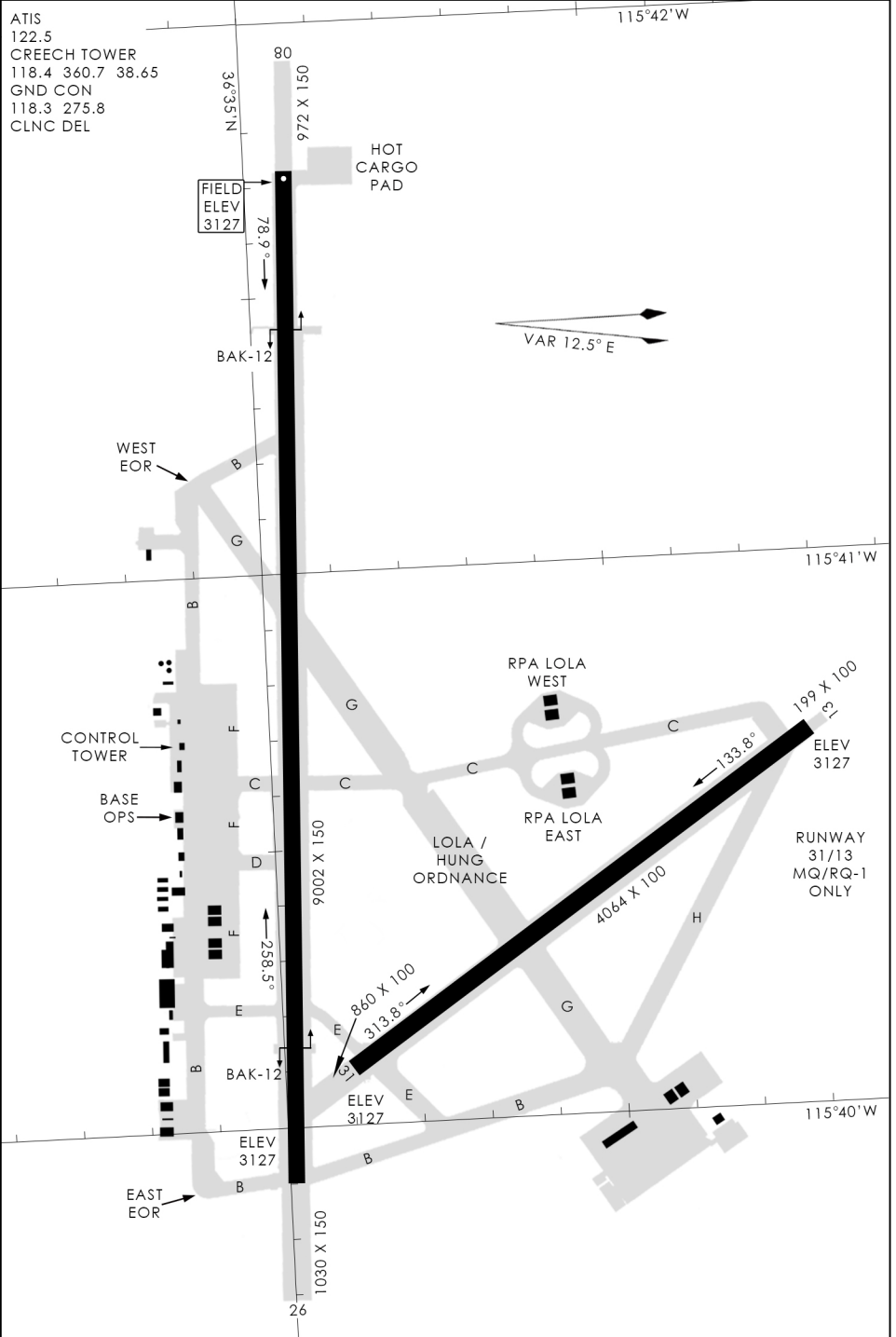
RPA LOLA WEST

RPA LOLA EAST

LOLA / HUNG ORDNANCE

RUNWAY  
 31/13  
 MQ/RQ-1  
 ONLY

EAST EOR



476 VFG JAN 2019

476 VFG JAN 2019

# AIRPORT DIAGRAM

INDIAN SPRINGS, NEVADA  
CREECH AFB (KINS)