

**MISSION DATA CARD**

OPORD		Callsign		Mission		Date/Time		
3533/2025		Tiger 1		Training		122000JAN25		
Task	SAM Training					Freq		
AO						261.15		
Departure				Recovery				
SID RWY 03				Tacan RWY 03				
#	Callsign		Pilot		IFF	TCN	LSR	NET
-1	Tiger 1-1		Ghost		1011	1Y	1551	01/01

**LOADOUT**

A/A	2xA9X, A120B				GUN	100% HEI-T	
A/G					CHF	90	
POD	TGP				FLR	30	
TKS	FPU-8A				FUEL	100%	

**TOLD**

	Takeoff	Target	Joker	Bingo	Land		
FUEL	13047			3500	2000		

**AIRBASES**

	Name	TCN	ATIS	GND	TWR	RWY	Elev	ILS
Dep	Rovaniemi	14X	282.8	282.5	250.55	21	643	111.7
Arr	Rovaniemi	14X	282.8	282.5	250.55	21	643	111.7
Div	CVN-71 USS Theodore Roosevelt	71X		ICLS 7	304.0			

**FLIGHTPLAN**

#	Name	Navaid/Coords/DME	ALT	TOT
1	Luleo	N65 32.552 E022	15000	
2	FMV TestRange	N66 21.611 E019	20000	
3	Nemgu	N66 18.465 E024 37.342	3000	
4	17 DME	N66 28.537 E025	2500	
5	Intial 03	N66 25.288 E025 34.661	2500	
6	Rovanieme	N66 33.934 E025 49.910	0	

**COMMS**

Radio	Usage
1	11(Atis), 3(NG), 4(NT), 16(BJ), 18(SH), 16(BJ), 4(NT), 3(NG)
2	Inhouse 261.15
3	MIDS A: 22 / B: 44

**SUPPORT****Tanker**

Callsign	TCN	Freq	ALT	TAS
SHELL 1	41Y	360.8		

Pos

**AWACS**

Callsign	Freq	ALT	Pos
HEIMDALL	348.7		
LOKI	347.8		

## RADIO CHANNELS

#	Freq	Name
1		Flight/Squadron specific
2	282.8	Rovaniemi ATIS
3	282.5	Rovaniemi Ground
4	250.55	Rovaniemi Tower
5	320.7	Bodo ATIS
6	250.75	Bodo Tower
7	235.45	Kallax ATIS
8	250.3	Kallax Tower
9	265.0	Texaco-1   KC-135   Medium / Slow   71Y
10	319.8	Arco-1   KC-135   High / Fast   22Y
11	360.8	Shell-1   KC-135 MPRS   High / Fast   41Y
12	304.0	CVN-71 Rough Rider (RRR)   71X
13	303.0	LHA-1 Tarawa (TWA)   79X
14	247.8	S-3B Mauler-1 (MAU)  64Y
15	347.8	Loki (E-2D)
16	348.7	Heimdall (E-3A)
17	242.17	ESR02 - CAS Range Operator
18	34.7	ESR02 - JTAC Odin
19	270.5	Blue
20	270.75	Red

**RAMROD**

0	1	2	3	4	5	6	7	8	9
P	L	A	T	F	O	R	M	E	D

**KTC 1400 C**

	0	1	2	3	4	5	6	7	8	9
A	EABJ	USP	QRC	KX	VM	OWN	IY	LD	GF	HT
B	UAIG	XSH	JBM	DC	ET	QPN	YK	RO	FV	LW
C	SKTY	QPF	BHD	GN	CX	LOA	UR	EI	MJ	WV
D	DXSI	BVN	CMR	FH	UP	LKO	TJ	EQ	WG	AY
E	MNSG	CQY	KOT	XV	HP	FBJ	EW	DU	IR	LA
F	IKTB	HVR	WXA	ND	LC	YJQ	UO	FM	EG	SP
G	LFGS	PEM	DCB	UK	XI	OYN	RJ	HA	QW	TV
H	SWXI	VFH	QJK	AC	LM	TDU	EO	NP	GY	BR
I	BWUC	TVO	GHD	FY	EN	XIA	SP	LR	JQ	MK
J	NBVG	DUT	MIS	AO	EK	PHL	XC	YW	QJ	FR
K	FCNR	KYA	HJT	EI	SG	MOP	UQ	WL	XV	DB
L	UNRD	AQP	KCW	BX	GH	ITM	EV	FJ	OS	LY
M	RVIO	PAT	DGB	JU	FW	HEM	YX	QN	LS	CK
N	AXWL	MJG	FSP	HN	YB	KTC	QD	UI	EO	VR
O	PTNX	UER	OWS	CM	LG	IVK	FJ	HB	DY	QA
P	QWSN	XUE	YDH	KP	IB	AFV	OT	LR	MG	CJ
Q	EXFC	QJD	SNB	GH	VI	KPT	YO	LU	AR	MW
R	MJCR	BKE	AOL	FW	YS	GUV	TN	XP	HQ	DI
S	VQFN	XSO	WUH	PY	JB	MKT	RL	ED	GC	IA
T	CJVQ	ANG	DRX	YE	BK	PIS	HW	LO	TU	FM
U	WRBE	GTX	VCH	UA	SK	NDM	PJ	LO	QY	FI
V	DNUO	SLW	KGI	PM	YR	HJX	AF	EQ	BT	CV
W	XDKC	HTY	VIJ	UA	RG	FMB	SL	NW	OQ	EP
X	DKOS	JIF	RYC	XB	LH	TWA	GQ	VN	EU	PM
Y	BKPU	LRW	QJY	MX	FD	ACT	HG	OE	SV	NI

**NAVAIDS**

Id	Name	Channel	Position	Elevation
BOO	Bodo	45	N67 15.838 E014 20.046	43
BNK	Banak	47	N70 03.937 E024 58.181	17
OYA	Andoya	28	N69 17.175 E016 08.658	19

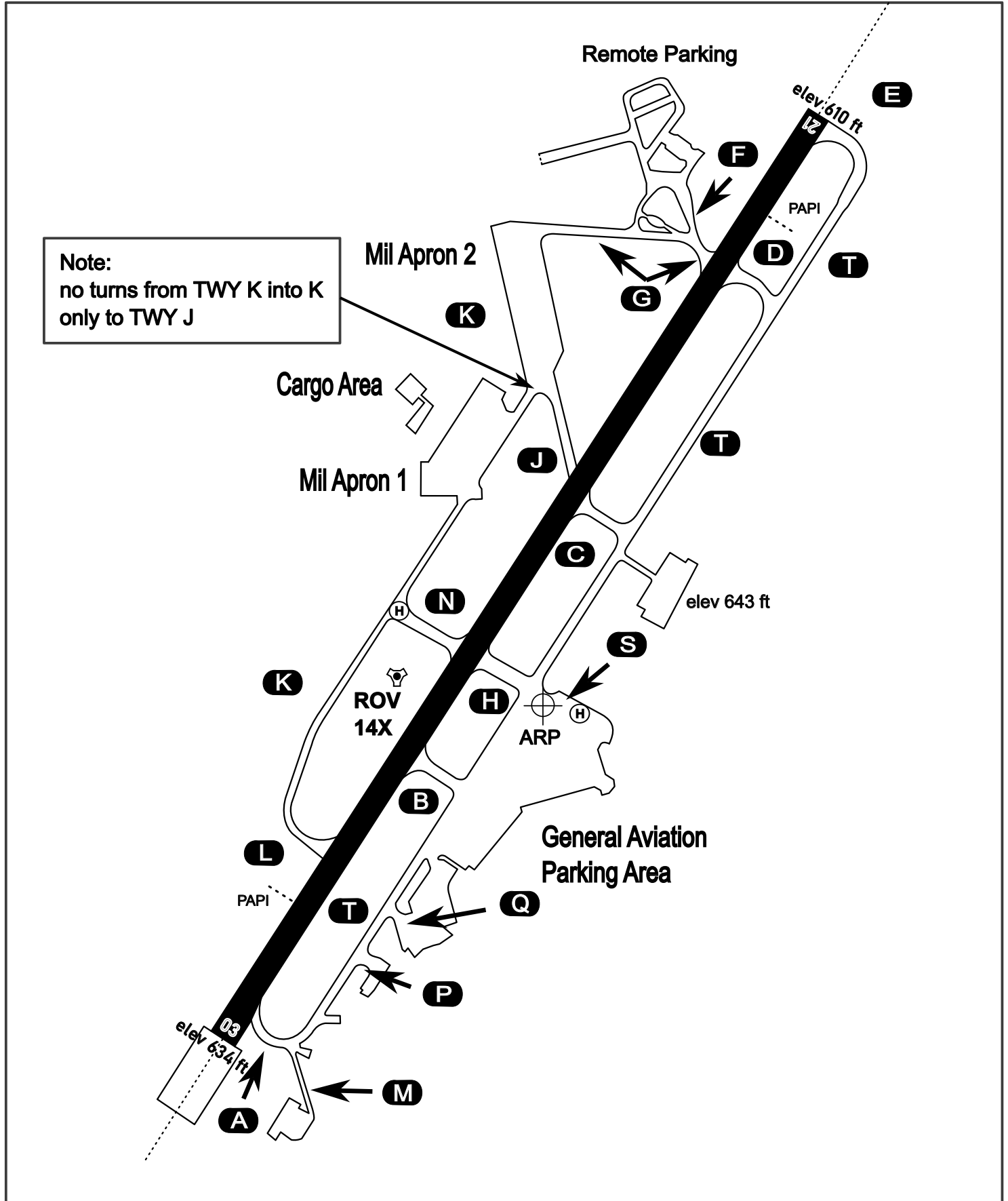
# AERODROME CHART

Rovaniemi Aerodrome

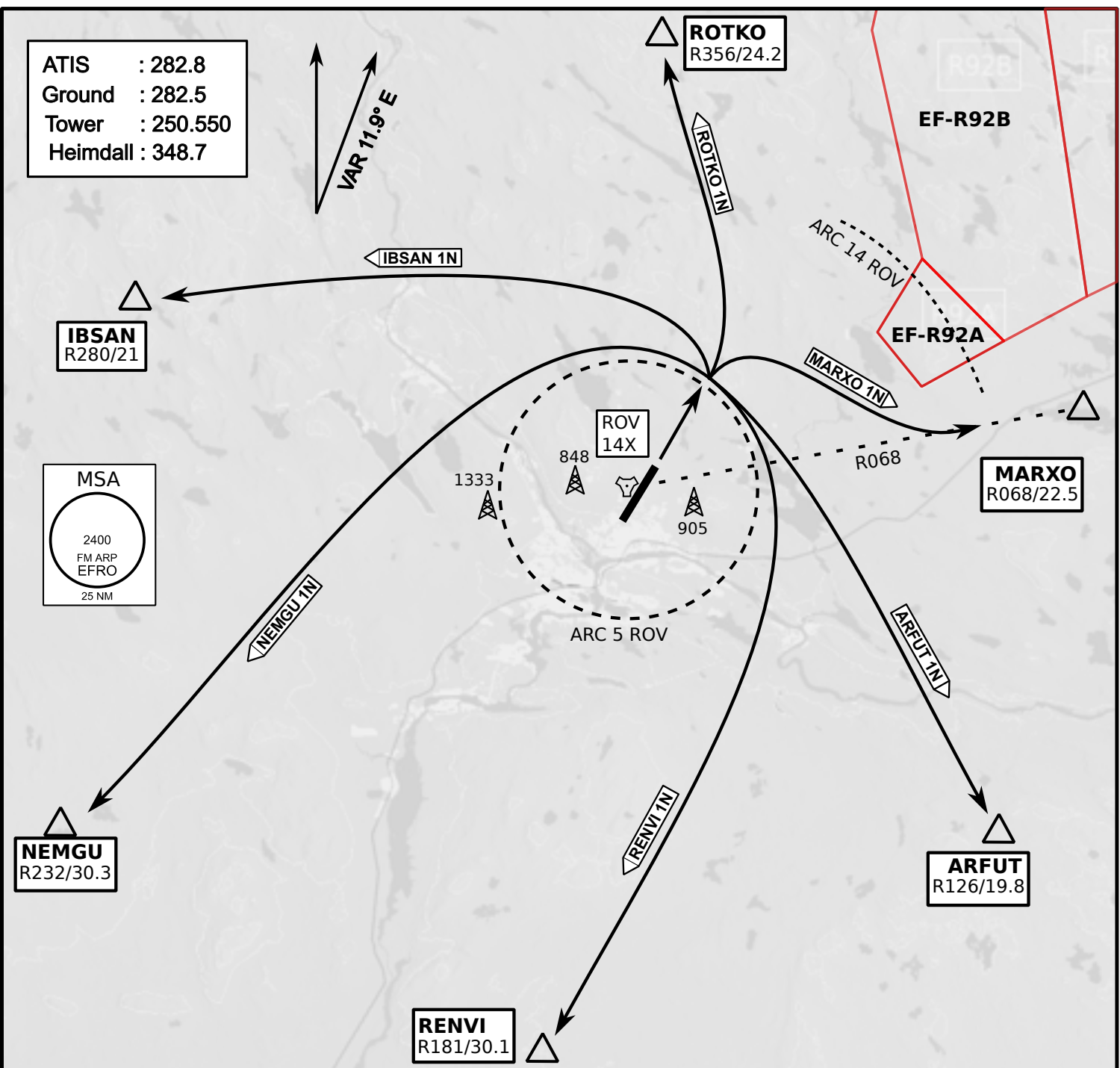
ARP N66° 33' 42" E025° 49' 51"

elev 643 ft

## ROVANIEMI, FINLAND



ATIS	Ground	Tower	Radar
282.800	282.500	250.550	348.700



- Climb on Rwy heading to min A2000ft
- when passing A2000ft OR 5 DME ROV (whichever is later) turn to exit point
- Stay outside ARC 5 ROV
- if EF-R92B is active :  
intercept R068 ROV inside 14 DME ROV to MARXO
- AB usage only if necessary for flight safety



