

MISSION DATA CARD

OPORD		Callsign		Mission		Date/Time		
3531/2025		Python* 1		Training		162030JAN25		
Task	Mk-84 bombing run pattern					Freq		
AO						131.0		
Departure				Recovery				
FYTTR THREE				STRYK				
#	Callsign		Pilot		IFF	TCN	LSR	NET
-1	Python* 1-1		Cyking		1611	5Y	1621	
-2	Python* 1-2		Jinx		1612	68Y	1622	
-3	Python* 1-3		Void		1613	68X	1623	
-4	Python* 1-4		Nerkub		1614	5X	1624	

LOADOUT

A/A	2xA120B, 2xA9L				GUN	100% HEI-T	
A/G	4xM84A-TP				CHF	30	
POD					FLR	90	
TKS	FT300				FUEL	100%	

TOLD

	Takeoff	Target	Joker	Bingo	Land		
FUEL	9166	8000	4000	2000	1000		

AIRBASES

	Name	TCN	ATIS	GND	TWR	RWY	Elev	ILS
Dep	Nellis AFB	12X	270.1	275.8	327.0	21L	1850	109.1
Arr	Nellis AFB	12X	270.1	275.8	327.0	21L	1850	109.1
Div	Creech AFB	87X	290.45	275.8	360.6			

FLIGHTPLAN

#	Name	Navaid/Coords/DME	ALT	TOT
1	FYTTR	N36 21 43.705 W115 41 18.305	15000	
2	2	N36 57 49.246 W115 55 45.189	13000	
3	Push Pt	N37 00 35.606 W115 47 39.227	8000	
4	IP AGL	N36 56 07.819 W115 37 26.895	500	
5	Bomb Circle	N36 37 11.400 W115 29 24.600	3040	
6	STRYK	N36 25 53.782 W115 30 38.299	11000	
7	GASS PEAK	N36 24 08.400 W115 10 39.600	11000	
8	APEX	N36 21 50.540 W114 54 29.847	5000	
9	Nellis AFB	N36 13 32 W115 02 37	1500	

COMMS

Radio	Usage
1	3,4,16,4,3

NOTES

Baseline 500ft, 550kts IAS

Offset right 5nm 30°

PUP 40°

Pulldown 7000ft, Apex 9000ft

Rel Angel 20-25°

Rel Alt >4000ft, Hard deck 3000ft (frag pattern)

SUPPORT**Tanker**

Callsign	TCN	Freq	ALT	TAS
TEXACO 3	22Y	300.05	15000	280
Pos	AR-231V: BTY 126/37 (N3620 W11614)			

OTHER FLIGHTS

Callsign	Mission	Airframe	Freq	TCN	Grpld	Laser
Monster 3	Training	4x A-10C	132.15	1/64	21	161X
AO	R65C	Task	UNG ROCKET TRAINING			
Panther 1	Training	4x F/A-18C	261.15	1/64	1	155X
AO	Groom Lake	Task	SAM Training SA-3			
Edelweiss 1	Training	4x F-16C	134.5	1/64		171X
AO		Task				

RADIO CHANNELS

#	Freq	Name
1		Flight/Squadron specific
2	289.4	Nellis Clearance Delivery
3	275.8	Nellis Ground
4	327.0	Nellis Tower
5	385.4	Nellis Approach/Departure West
6	273.55	Nellis Approach/Departure East
7	317.525	Nellis Control -- Sally
8	254.4	Nellis Control-- Lee
9	305.6	SOF Bullseye
10	343.725	EMERGENCY SINGLE FRQ
11	270.1	Nellis ATIS
12	360.625	Creech AFB Tower
13	250.1	HAVE QUICK 13
14	251.1	HAVE QUICK 14
15	252.1	HAVE QUICK 15
16	377.8	Blackjack
17	265.0	KC-135 AR-641A
18	360.8	KC-135MPRS AR-635
19	319.8	KC-135MPRS AR-625
20	300.05	KC-135 AR-231V

RAMROD

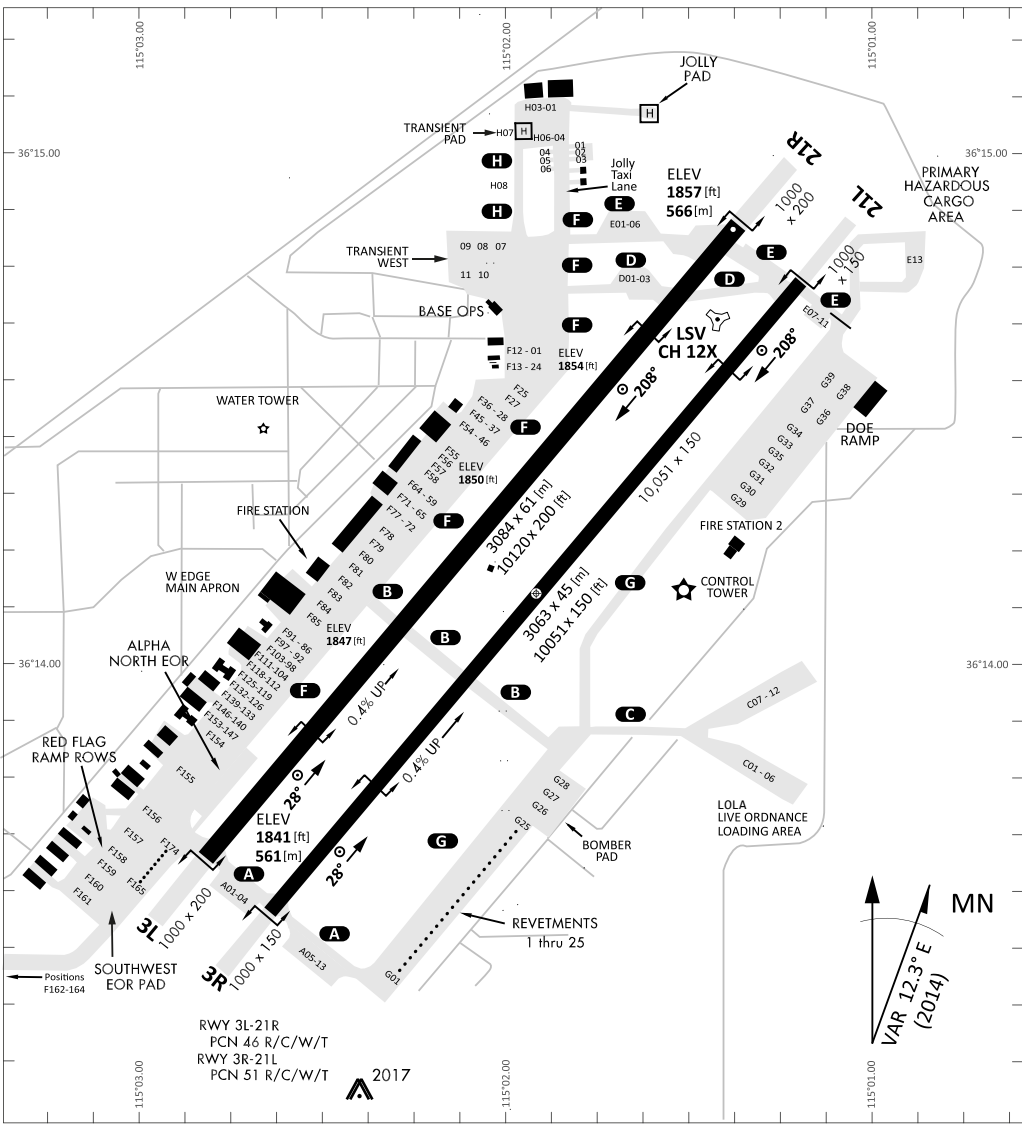
0	1	2	3	4	5	6	7	8	9
C	H	A	R	M	I	N	G	L	Y

KTC 1400 C

	0	1	2	3	4	5	6	7	8	9
A	PFLW	IJY	GBX	KT	UM	DEQ	VH	CO	NA	SR
B	VJRT	PQD	WMY	FX	AG	USI	KC	LE	NH	BO
C	YUGK	RAJ	LTC	PQ	FV	BMX	DS	OE	HW	NI
D	IDEM	GXT	KJU	LQ	SC	YPW	HV	BN	RO	FA
E	XEAR	CFT	HID	BK	LG	NQO	VJ	WP	YS	UM
F	ISNX	RKA	TOH	JP	YW	LFG	BU	VQ	EM	CD
G	LECV	IPY	UNT	XD	JG	HOB	KS	AR	QW	MF
H	MUHW	FOQ	JEL	KP	GX	TVB	SC	NY	IR	AD
I	RDFB	TLJ	XEH	UA	VN	YQG	OK	WI	PC	SM
J	EJSP	UFL	AQT	BD	CO	XRG	WY	IV	NH	MK
K	SKFD	ING	TMJ	LE	PU	BXO	CV	WY	RQ	HA
L	IKUE	DQV	JYL	HF	SX	PAW	TC	NM	OB	GR
M	QILA	HVS	DWR	FK	JU	XGP	BM	EC	YN	TO
N	MQGO	SLR	WVH	FN	EC	PXT	JD	IU	BK	YA
O	GERL	KWM	SAF	PC	HV	OYI	UJ	DN	XQ	BT
P	JHNL	SOG	XIR	PU	VM	KDY	EW	FB	QA	TC
Q	UCAY	MBI	WXD	QG	EH	FOS	JK	LV	TN	RP
R	GEOS	LIQ	JKA	VN	MC	PXB	TH	RW	FY	UD
S	VTYH	RBE	UXJ	FD	CW	POG	SI	NK	QA	ML
T	WCXU	QPF	TNH	DM	KR	LJI	OV	AY	GE	SB
U	XFBN	ESV	DMI	UG	JH	YRW	CT	PO	AL	QK
V	CRPE	IAO	DHK	WF	SM	UYG	JB	NV	TX	QL
W	RMDY	KNH	PQI	ST	JL	AVU	FB	XE	OC	GW
X	MGFB	CQO	TPR	KE	LH	WDY	VA	XJ	IU	NS
Y	XWBC	PLG	UEK	YF	QI	NHV	MA	JD	SR	OT

NAVAIDS

Id	Name	Channel	Position	Elevation
BCE	Bryce Canyon	75	N3741.35 W11218.23	9040
BIH	Bishop	33	N3722.62 W11821.99	4114
BLD	Boulder	114	N3559.75 W11451.82	3650
BTY	Beatty	94	N3648.54 W11644.86	2925
CDC	Cedar City	120	N3747.24 W11304.90	5463
DAG	Daggett	79	N3457.75 W11634.69	1760
EED	Needles	99	N3445.96 W11428.43	650
GFS	Goffs	91	N3507.87 W11510.59	4019
GRL	Groom Lake	18	N3713.91 W11548.16	4475
HEC	Hector	74	N3447.83 W11627.78	1854
ILC	Wilson Creek	110	N3815.02 W11423.65	9318
INS	Creech AFB	87	N3635.20 W11540.12	3101
LAS	McCarran Intl	116	N3604.78 W11509.59	2142
LSV	Nellis	12	N3614.68 W11501.50	1864
MLF	Milford	58	N3821.62 W11300.79	4977
MMM	Mormon Mesa	90	N3646.16 W11416.65	2120
MVA	Mina	98	N3833.92 W11801.97	7860
OAL	Coale Dale	124	N3800.20 W11746.23	4800
PGS	Peach Springs	57	N3537.48 W11332.67	4754
TPH	Tonopah Muni	119	N3801.84 W11702.01	5330
TQQ	Silverbow	77	N3748.00 W11647.00	5500
UTI	St George	23	N3705.29 W11335.53	2871



RWY 3L-21R
 PCN 46 R/C/W/T
 RWY 3R-21L
 PCN 51 R/C/W/T
 2017

PAR	RWY	CAT	MINIMA	ARP	ELEV	Scale
	21L	A B D E	2057 - 0.8 200 (200-0.8/1.6) GS 3°	36° 14.060° N 115° 01.058° W	1857 [ft] 566 [m]	0 300 600 900 1200 1500 [m] 0 1000 2000 3000 4000 5000 [ft]
	3R	A B D E	2057 - 0.8 200 (200-0.8/1.6) GS 3°			
	21R	A C D E	2257 - 1.2 350 (350-1.2/1.6)			
	3L	A C D E	2257 - 1.2 350 (350-1.2/1.6)			

RWY	TORA	TODA	ASDA	LDA	PSN	THR	ALS
21L	10051 [ft] 3063 [m]	11051 [ft] 3368 [m]	11051 [ft] 3368 [m]	10051 [ft] 3063 [m]	36°14.043' N	115°01.018' W	⊕
3R	10120 [ft] 3084 [m]	11120 [ft] 3398 [m]	11120 [ft] 3398 [m]	10120 [ft] 3084 [m]	36°13.029' N	115°02.038' W	

ATIS	NELLIS GROUND	NELLIS TOWER	NELLIS CONTROL	TACAN	ILS RWY 21L	NELLIS EAST	NELLIS WEST
270.100 MHz	275.800 121.800	327.000 132.55	317.525	LSV 12X	109.10 Mhz	384.400	385.000

FYTTR THREE DEPARTURE IFR CHART | VALID 2014 LAS VEGAS, NEVADA

ATIS
270.100
NELLIS GROUND
275.800
NELLIS TOWER
327.000
NELLIS CONTROL
317.525
NELLIS DEP/APP EAST
384.400
BLACKJACK
377.800

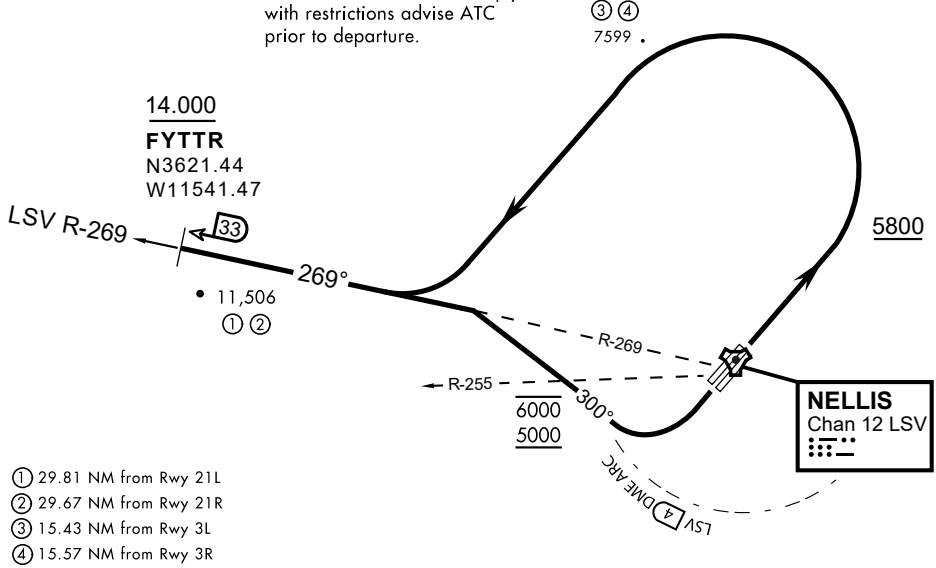


Rwy	Knots	60	120	180	240	300	360
3L (a)	V/V(fpm)	394	788	1182	1576	1970	2364
3R (a)	V/V(fpm)	392	784	1176	1568	1960	2352
21L (b)	V/V(fpm)	388	776	1164	1552	1940	2328
21R (b)	V/V(fpm)	390	780	1170	1560	1950	2340

Minimum Climb Rate

- (a) to 9300
- (b) to 13 500

CAUTION: If unable to comply with restrictions advise ATC prior to departure.



- (1) 29.81 NM from Rwy 21L
- (2) 29.67 NM from Rwy 21R
- (3) 15.43 NM from Rwy 3L
- (4) 15.57 NM from Rwy 3R

DEPARTURE ROUTE DESCRIPTION

TAKEOFF RWY 3L/R

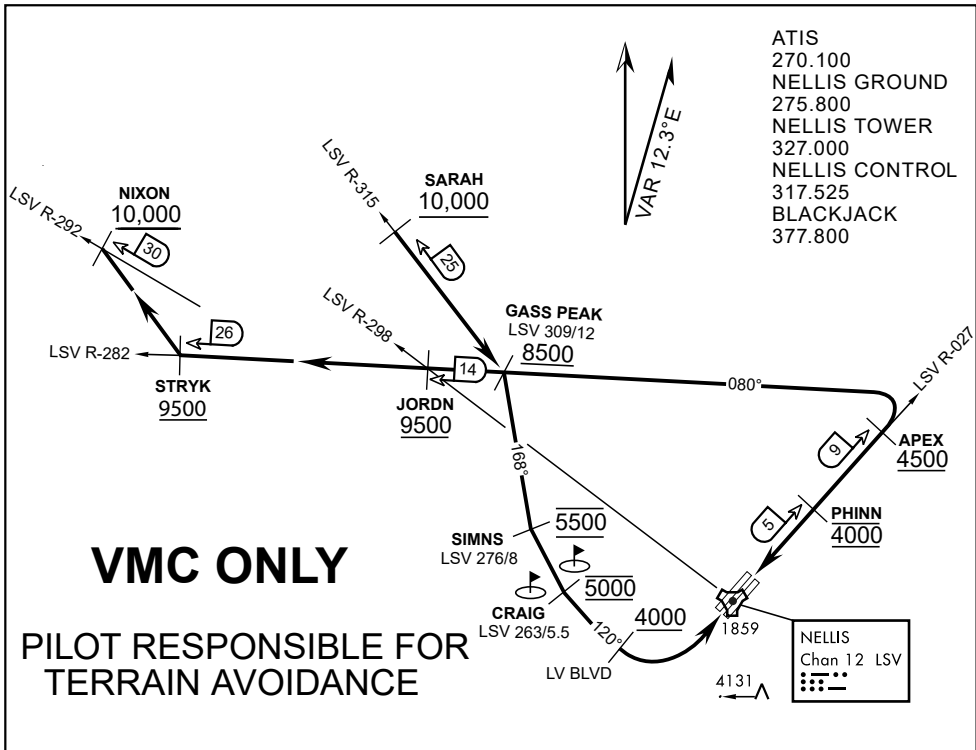
- Fly runway heading until reaching 5,800'.
- Then climbing left turn to intercept LSV TACAN R-269 outbound.
- Cross FYTTR at or above 14,000' or as assigned, then via assigned route.

TAKEOFF RWY 21L/21R

- Turn right to intercept LSV TACAN R-269 outbound.
- Remain within LSV 4 DME until joining LSV R-269
- Cross R-255 between 5,000' and 6,000'.
- Cross FYTTR at or above 14,000' or as assigned, then via assigned route.

NOISE ABATEMENT PROCEDURES:

Fly according Nellis Noise Abatement instructions as published



APPROACH ROUTE DESCRIPTION

APPROACH RWY 3L/R

Cross STRYK at or above 9,500' MSL, proceed direct GASS PEAK. Cross JORDN at or above 9,500' MSL, cross GASS PEAK at or above 8,500' MSL. Proceed direct SIMNS and cross at 5,500' MSL. Cross Las Vegas Blvd at or above 4,000' MSL then to 3,500' MSL for Initial. Remain within 4 DME if LSV on turn to final.

VFR STRAIGHT-IN RWY 3L/R

Depart CRAIG & descend to be at 3,000' MSL by Las Vegas Blvd. Do not descend below 3,000' MSL until within 5 DME of LSV or 4 NM of the runway on turn to final.

APPROACH RWY 21L/R

Cross STRYK at or above 9,500' MSL, proceed direct GASS PEAK. Cross JORDN at or above 9,500' MSL, cross GASS PEAK at or above 8,500' MSL. Cross APEX at or above 4,500' MSL then direct 5NM initial. Descend to cross PHINN at 4,000' MSL, Inside 5 NM descend to 3,500' MSL.

VFR STRAIGHT-IN RWY 21L/R

Cross APEX at 4,000' MSL. Descend to be at 3,000' MSL at PHINN. Descend to 3,000' MSL at LSV 027/5.

RANGE 63B EXIT

SOUTH: Via NIXON at or above 10,000' MSL, then direct STRYK.
EAST: Via SARAH at or above 10,000' MSL, then direct GASS PEAK.



INDIAN SPRINGS, NEVADA

TACAN INS Chan 87	APCH CRS 065°	Rwy ldg TDZE 3133	9002 3113
		Arpt Elev 3113	

INDIAN SPRINGS AF AUX (KINS)

▼ * MISSED APPROACH: Straight ahead to INS TACAN, intercept INS R-outbound, cross 17 DME at or above 9500, then direkt KSV TACAN 114

NELLIS CON

CREECH AFB TOWER
118.30 60.60

GND CON

NOT FOR CIVIL USE

FOR USE UNDER BASIC VFR
WEATHER MINIMUMS ONLY

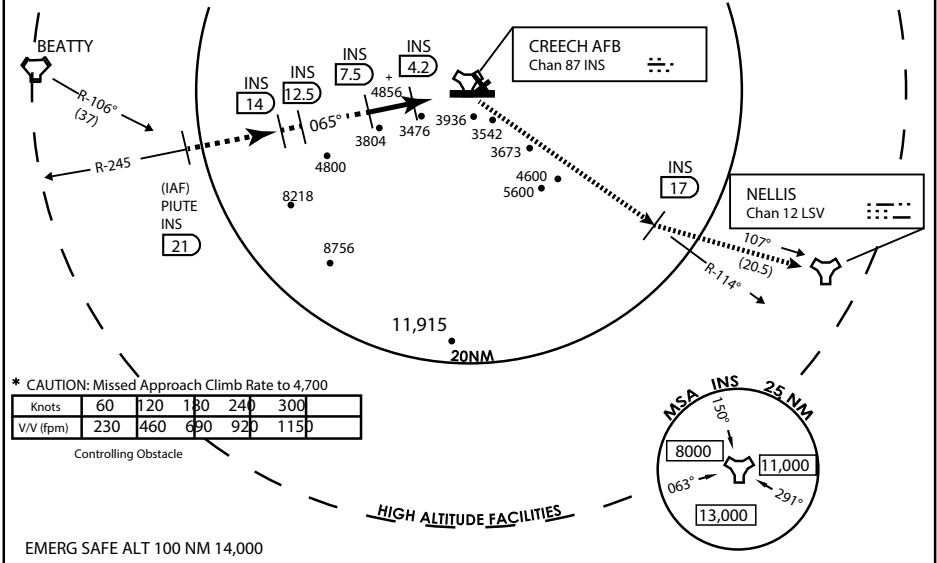
PILOT IS RESPONSIBLE FOR TERRAIN/OBSTACLE AVOIDANCE AND APPROPRIATE VFR CLOUD CLEARANCE FOR ALL

CAUTION: Descent gradients are greater than allowed under standard TERPS criteria and inbound course does not meet straight-in criteria

CAUTION: Final approach course crosses Runway centerline at MIDFIELD. Maneuvering left of course required prior to landing. Do not Maneuver farther north than the INS R- 258

Modified by viaBog 66 for use with DCS
NOT FOR REAL LIFE NAVIGATION

Modified by viaBog 66 for use with DCS
NOT FOR REAL LIFE NAVIGATION

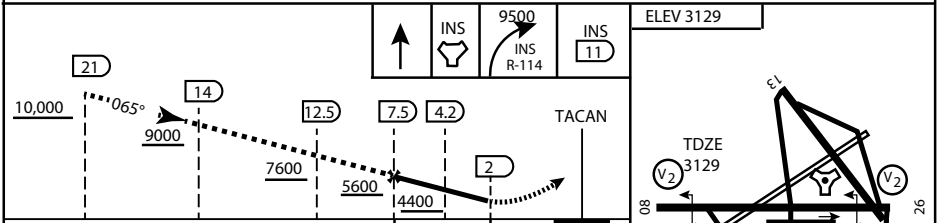


* CAUTION: Missed Approach Climb Rate to 4,700

Knots	60	120	180	240	300
V/V (fpm)	230	460	690	920	1150

Controlling Obstacle

HIGH ALTITUDE FACILITIES



CATEGORY	A	B	C	D	E
S-8	3760-1 1/2	627 (700-1 1/2)	3760-1 3/4 627 (700-1 3/4)	3760-2 627 (700-2)	3760-2 1/4 627 (700-2 1/4)
CIRCLING	NOT AUTHORIZED				

MIRL Rwy 8-26

CITY OF INDIAN, NEVADA

INDIAN SPRINGS AF AUX (KINS)

(FOR DAY VFR USE ONLY)



AIRPORT DIAGRAM

476 VFG

CREECH AFB (KINS)
INDIAN SPRINGS, NEVADA

ATIS
 122.5
 CREECH TOWER
 118.4 360.7 38.65
 GND CON
 118.3 275.8
 CLNC DEL

115°42'W

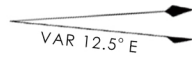
FIELD
 ELEV
 3127

80

972 X 150

HOT CARGO PAD

BAK-12



WEST EOR

115°41'W

476 VFG JAN 2019

CONTROL TOWER
 BASE OPS

RPA LOLA WEST

RPA LOLA EAST

LOLA / HUNG ORDNANCE

RUNWAY
 31/13
 MQ/RQ-1
 ONLY

9002 X 150

258.5°

860 X 100

313.8°

4064 X 100

199 X 100

ELEV 3127

BAK-12

ELEV 3127

115°40'W

EAST EOR

1030 X 150

26

476 VFG JAN 2019

AIRPORT DIAGRAM

INDIAN SPRINGS, NEVADA
CREECH AFB (KINS)