

MISSION DATA CARD

| | | | | | | | | |
|------------|----------------------|-------------|-------|--------------------|------|-------------|------|-------|
| OPORD | | Callsign | | Mission | | Date/Time | | |
| 3529/2025 | | Edelweiss 5 | | Training | | 101430JAN25 | | |
| Task | LCR Check Testflight | | | | | Freq | | |
| AO | SAM Training Area | | | | | 264.55 | | |
| Departure | | | | Recovery | | | | |
| DREAM FOUR | | | | HI-TACAN Y RWY 21L | | | | |
| # | Callsign | | Pilot | | IFF | TCN | LSR | NET |
| -1 | Edelweiss 5-1 | | Cloud | | 1751 | 12X | 1751 | 01/01 |

LOADOUT

| | | | | | | | |
|-----|----------------|--|--|--|------|------------|--|
| A/A | 2xA9X, 2xA120C | | | | GUN | 100% HEI-T | |
| A/G | | | | | CHF | 120 | |
| POD | | | | | FLR | 0 | |
| TKS | FPU-8A | | | | FUEL | 100% | |

TOLD

| | | | | | |
|------|---------|--------|-------|-------|------|
| | Takeoff | Target | Joker | Bingo | Land |
| FUEL | 13047 | | 4000 | 2500 | |

AIRBASES

| | | | | | | | | |
|-----|------------|-----|--------|-------|-------|-----|------|-------|
| | Name | TCN | ATIS | GND | TWR | RWY | Elev | ILS |
| Dep | Nellis AFB | 12X | 270.1 | 275.8 | 327.0 | 21L | 1850 | 109.1 |
| Arr | Nellis AFB | 12X | 270.1 | 275.8 | 327.0 | 21L | 1850 | 109.1 |
| Div | Creech AFB | 87X | 290.45 | 275.8 | 360.6 | | | |

FLIGHTPLAN

| # | Name | Navaid/Coords/DME | ALT | TOT |
|---|----------------------|--|-----|-----|
| 1 | DREAM | LAS 354/66 BLD 342/71 (N37 10.340 W114 59.530) | | |
| 2 | PIUTE | INS 245/21 (N36 30.680 W116 05.690) | | |
| 3 | Beatty | N36 48.540 W116 44.860 | | |
| 4 | Pahute Mesa Airstrip | N37 06.100 W116 18.774 | | |
| 5 | DUDBE | N36 21.849 W115 20.581 | | |

COMMS

| Radio | Usage |
|-------|--|
| 1 | 11(ATIS), 3(NG), 4(NT), 16(BJ), 4(NT), 3(NG) |
| 2 | MIDS A: 22 / B: 44 |

SUPPORT**Tanker**

| Callsign | TCN | Freq | ALT | TAS |
|----------|------|-----------------------------------|-------|-----|
| ARCO 1 | 113Y | 319.8 | FL250 | 450 |
| | Pos | AR-625: MVA 168/77 (N3717 W11802) | | |

AWACS

| Callsign | Freq | ALT | Pos |
|----------|-------|-------|-----------------------------|
| MAGIC | 377.8 | FL270 | N3749 W11417 - N3713 W11446 |

RADIO CHANNELS

| # | Freq | Name |
|----|---------|--------------------------------|
| 1 | | Flight/Squadron specific |
| 2 | 289.4 | Nellis Clearance Delivery |
| 3 | 275.8 | Nellis Ground |
| 4 | 327.0 | Nellis Tower |
| 5 | 385.4 | Nellis Approach/Departure West |
| 6 | 273.55 | Nellis Approach/Departure East |
| 7 | 317.525 | Nellis Control -- Sally |
| 8 | 254.4 | Nellis Control-- Lee |
| 9 | 305.6 | SOF Bullseye |
| 10 | 343.725 | EMERGENCY SINGLE FRQ |
| 11 | 270.1 | Nellis ATIS |
| 12 | 360.625 | Creech AFB Tower |
| 13 | 250.1 | HAVE QUICK 13 |
| 14 | 251.1 | HAVE QUICK 14 |
| 15 | 252.1 | HAVE QUICK 15 |
| 16 | 377.8 | Blackjack |
| 17 | 265.0 | KC-135 AR-641A |
| 18 | 360.8 | KC-135MPRS AR-635 |
| 19 | 319.8 | KC-135MPRS AR-625 |
| 20 | 300.05 | KC-135 AR-231V |

| RAMROD | | | | | | | | | | |
|------------|------|-----|-----|----|----|-----|----|----|----|----|
| 0 | 1 | 2 | 3 | 4 | 5 | 6 | 7 | 8 | 9 | |
| D | E | B | A | U | C | H | I | N | G | |
| KTC 1400 C | | | | | | | | | | |
| | 0 | 1 | 2 | 3 | 4 | 5 | 6 | 7 | 8 | 9 |
| A | JXKT | IGO | CPR | LH | BQ | NDS | MY | EA | VF | UW |
| B | KLBR | ONI | UVJ | HF | CE | XDM | QP | YT | AW | SG |
| C | XWNH | LDU | STP | AE | FQ | YKO | BI | GM | JC | VR |
| D | JPMK | WBX | LHQ | VE | CY | NFU | TG | DA | RI | OS |
| E | MKVJ | RGF | SEN | QO | WL | PHX | AY | IB | DT | UC |
| F | JCGB | SRX | LUQ | HP | FK | MTO | IA | EW | VN | DY |
| G | PSXB | FLW | OTU | QA | MH | RVD | IG | JN | EY | KC |
| H | KONP | VEG | SCQ | FR | YW | LDU | XB | JM | TI | AH |
| I | NVCY | FRH | JKU | QX | SE | LPB | GD | OA | MI | WT |
| J | AQIM | LNO | GHS | PK | YV | XRW | FJ | DB | EC | TU |
| K | UDLF | TCA | JGM | PB | SK | OXE | RN | YQ | IH | WV |
| L | ETSU | HMY | GFP | LB | JN | DAQ | VR | XK | WI | OC |
| M | FTAD | VCI | WMQ | PS | GX | JEK | LN | OY | HB | RU |
| N | XPWV | KIF | SRO | QY | CH | LMG | DU | NA | BT | JE |
| O | UKOA | FQG | ICY | TB | WN | MXV | EJ | SR | PL | HD |
| P | NDKX | MJA | UGI | BL | HQ | WTY | CV | SP | OE | FR |
| Q | DEVF | KWN | QTL | OP | MB | CXR | YG | IH | US | AJ |
| R | VUFI | OWQ | ADN | EJ | SP | YRG | MX | TC | KH | BL |
| S | IJVA | ROE | BYX | NG | UD | CPT | FH | KL | WM | SQ |
| T | FVQW | HEN | LGK | MS | AB | CDY | JX | TR | UI | OP |
| U | TPFO | SEN | QUL | WY | CV | AHM | RK | XG | DJ | BI |
| V | UQPH | ONA | ITD | SW | BE | YJR | VL | KM | CX | FG |
| W | OLKA | BPR | GCJ | HV | TI | YWD | EN | XF | QU | SM |
| X | PNXM | EWC | RDI | LK | QG | AJB | SH | FY | TO | UV |
| Y | FBXA | RTJ | CWN | YM | QG | KIS | UP | LH | OE | VD |

NAVAIDS

| Id | Name | Channel | Position | Elevation |
|-----------|---------------|----------------|--------------------|------------------|
| BCE | Bryce Canyon | 75 | N3741.35 W11218.23 | 9040 |
| BIH | Bishop | 33 | N3722.62 W11821.99 | 4114 |
| BLD | Boulder | 114 | N3559.75 W11451.82 | 3650 |
| BTY | Beatty | 94 | N3648.54 W11644.86 | 2925 |
| CDC | Cedar City | 120 | N3747.24 W11304.90 | 5463 |
| DAG | Daggett | 79 | N3457.75 W11634.69 | 1760 |
| EED | Needles | 99 | N3445.96 W11428.43 | 650 |
| GFS | Goffs | 91 | N3507.87 W11510.59 | 4019 |
| GRL | Groom Lake | 18 | N3713.91 W11548.16 | 4475 |
| HEC | Hector | 74 | N3447.83 W11627.78 | 1854 |
| ILC | Wilson Creek | 110 | N3815.02 W11423.65 | 9318 |
| INS | Creech AFB | 87 | N3635.20 W11540.12 | 3101 |
| LAS | McCarran Intl | 116 | N3604.78 W11509.59 | 2142 |
| LSV | Nellis | 12 | N3614.68 W11501.50 | 1864 |
| MLF | Milford | 58 | N3821.62 W11300.79 | 4977 |
| MMM | Mormon Mesa | 90 | N3646.16 W11416.65 | 2120 |
| MVA | Mina | 98 | N3833.92 W11801.97 | 7860 |
| OAL | Coale Dale | 124 | N3800.20 W11746.23 | 4800 |
| PGS | Peach Springs | 57 | N3537.48 W11332.67 | 4754 |
| TPH | Tonopah Muni | 119 | N3801.84 W11702.01 | 5330 |
| TQQ | Silverbow | 77 | N3748.00 W11647.00 | 5500 |
| UTI | St George | 23 | N3705.29 W11335.53 | 2871 |



RWY 3L-21R
 PCN 46 R/C/W/T
 RWY 3R-21L
 PCN 51 R/C/W/T
 2017

| PAR | RWY | CAT | MINIMA | | ARP | ELEV | Scale 1:35'500 | |
|-----|-----|---------|------------------------------|-------|---------------------------------|----------------------|---------------------------------|--|
| | 21L | A B D E | 2057 - 0.8 200 (200-0.8/1.6) | GS 3° | 36° 14.060° N 115° 01.058° W | 1857 [ft] 566 [m] | 0 300 600 900 1200 1500 [m] | |
| | 3R | A B D E | 2057 - 0.8 200 (200-0.8/1.6) | GS 3° | | | 0 1000 2000 3000 4000 5000 [ft] | |
| SRA | 21R | A C D E | 2257 - 1.2 350 (350-1.2/1.6) | | | | | |
| | 3L | A C D E | 2257 - 1.2 350 (350-1.2/1.6) | | | | | |

| RWY | TORA | TODA | ASDA | LDA | PSN | THR | ALS |
|-----|---------------------|---------------------|---------------------|---------------------|--------------|---------------|-----|
| 21L | 10051 [ft] 3063 [m] | 11051 [ft] 3368 [m] | 11051 [ft] 3368 [m] | 10051 [ft] 3063 [m] | 36°14.043' N | 115°01.018' W | ⊕ |
| 3R | 10120 [ft] 3084 [m] | 11120 [ft] 3398 [m] | 11120 [ft] 3398 [m] | 10120 [ft] 3084 [m] | 36°13.029' N | 115°02.038' W | |

| ATIS | NELLIS GROUND | NELLIS TOWER | NELLIS CONTROL | TACAN | ILS RWY 21L | NELLIS EAST | NELLIS WEST |
|-------------|-------------------|------------------|----------------|---------|-------------|-------------|-------------|
| 270.100 MHz | 275.800 121.800 | 327.000 132.55 | 317.525 | LSV 12X | 109.10 Mhz | 384.400 | 385.000 |

DREAM FOUR DEPARTURE DREAM4 | VALID 2014 LAS VEGAS, NEVADA

NELLIS AFB (KLSV)
LAS VEGAS, NEVADA

ATIS
270.100
NELLIS GROUND
275.800
NELLIS TOWER
327.000
NELLIS CONTROL
317.525
NELLIS DEP/APP EAST
384.400
BLACKJACK
377.800

DREAM
N3710.34
W11459.53

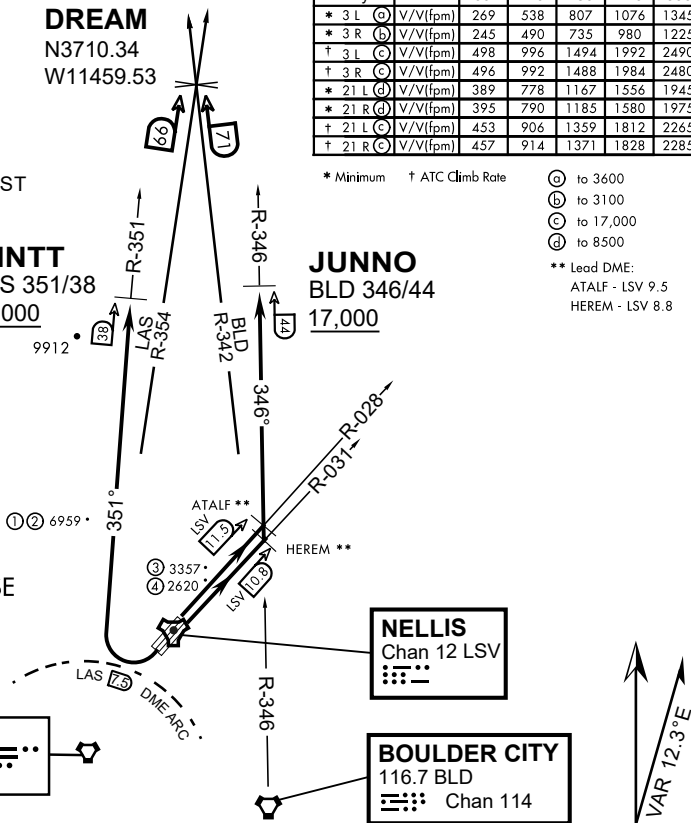
MINTT
LAS 351/38
17,000

| Rwy | Knots | 60 | 120 | 180 | 240 | 300 | 360 |
|------------|----------|-----|-----|------|------|------|------|
| * 3 L (A) | V/V(fpm) | 269 | 538 | 807 | 1076 | 1345 | 1614 |
| * 3 R (B) | V/V(fpm) | 245 | 490 | 735 | 980 | 1225 | 1470 |
| † 3 L (C) | V/V(fpm) | 498 | 996 | 1494 | 1992 | 2490 | 2988 |
| † 3 R (C) | V/V(fpm) | 496 | 992 | 1488 | 1984 | 2480 | 2976 |
| * 21 L (D) | V/V(fpm) | 389 | 778 | 1167 | 1556 | 1945 | 2334 |
| * 21 R (D) | V/V(fpm) | 395 | 790 | 1185 | 1580 | 1975 | 2370 |
| † 21 L (C) | V/V(fpm) | 453 | 906 | 1359 | 1812 | 2265 | 2718 |
| † 21 R (C) | V/V(fpm) | 457 | 914 | 1371 | 1828 | 2285 | 2742 |

* Minimum † ATC Climb Rate

- (A) to 3600
 - (B) to 3100
 - (C) to 17,000
 - (D) to 8500
- ** Lead DME:
ATALF - LSV 9.5
HEREM - LSV 8.8

- ① 12.24 NM from Rwy 21R
- ② 12.40 NM from Rwy 21L
- ③ 5.67 NM from Rwy 3L
- ④ 5.85 NM from Rwy 3R



NOT FOR CIVIL USE

CAUTION: If unable to comply with restrictions advise ATC prior to departure.

DEPARTURE ROUTE DESCRIPTION

TAKE-OFF RWY 3L

- Fly runway heading to intercept the LSV TACAN R-028 then direct ATALF, intercept the BLD VORTAC R-346 then direct JUNNO, cross JUNNO at or above 17,000, then via assigned route.

TAKE-OFF RWY 3R

- Fly runway heading to intercept the LSV TACAN R-031 then direct HEREM, intercept the BLD VORTAC R-346 then direct JUNNO, cross JUNNO at or above 17,000, then via assigned route.

TAKE-OFF RWY 21L/R

- Turn right to intercept LAS VORTAC R-351 outbound. Remain North of LAS 7.5 DME turning Northbound. Intercept LAS R-351 between 5000 and 6000, do not proceed West of LAS R-351. Cross MINTT at or above 17,000, then via assigned route.

NOISE ABATMENT PROCEDURES: Fly acc. Nellis Noise Abatement instructions

DREAM FOUR DEPARTURE (DREAM4 • DREAM)

HI-TACAN Y RWY 21L

| | | | |
|-------------------|---------------|---|------------------------------|
| TACAN LSV Chan 12 | APCH CRS 210° | Rwy ldg 21L 10,051 TDZE 1865 Arprt Elev 1869 | Rwy ldg 21R 10,120 TDZE 1869 |
|-------------------|---------------|---|------------------------------|

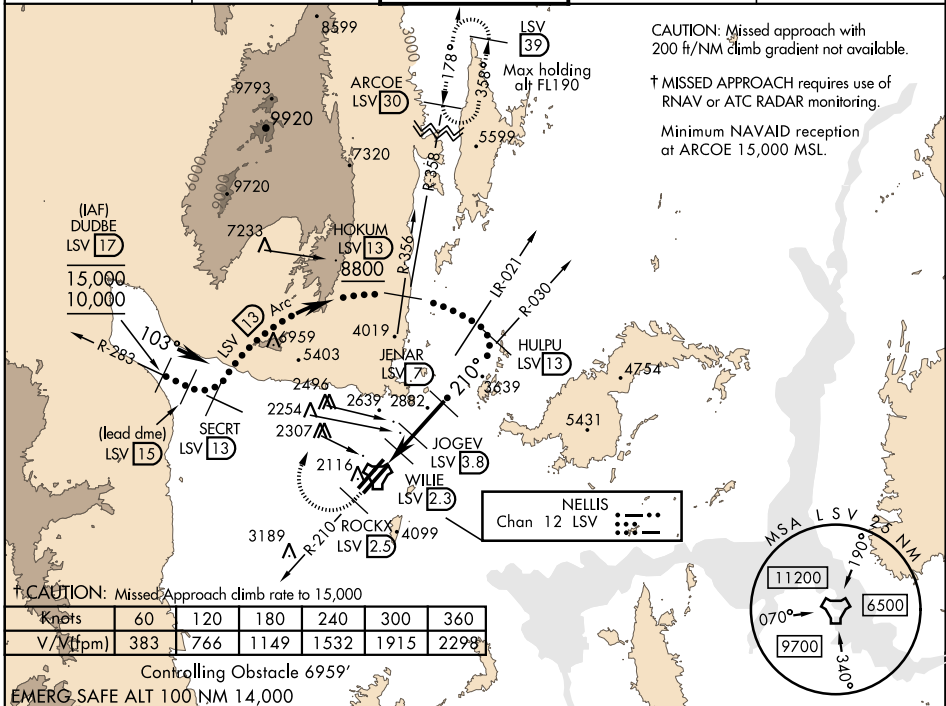
JAL-227 [USAF] NELLIS AFB (KLSV)

* When ALS inop, increase CAT CDE vis to 1 3/4 miles.
 ** Circling not authorized E of Rwy 3R-21L.



† MISSED APPROACH: Climb to 15,000, intercept LSV TACAN R-210 to 2.5 DME (ROCKX), then climbing right turn heading 020° to join LSV R-358 to ARCOE and hold, continue climb in hold to 15,000. Missed approach not for civil use.

| | | | | |
|------------|------------------------------|---------------------------|---------------------|----------------------|
| ATIS 270.1 | NELLIS APP CON 124.95 273.55 | NELLIS TOWER 132.55 327.0 | GND CON 121.8 275.8 | CLNC DEL 120.9 289.4 |
|------------|------------------------------|---------------------------|---------------------|----------------------|



CAUTION: Missed approach with 200 ft/NM climb gradient not available.

† MISSED APPROACH requires use of RNAV or ATC RADAR monitoring.

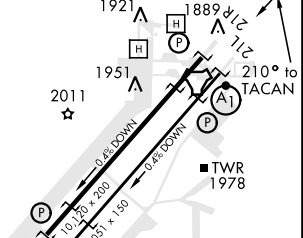
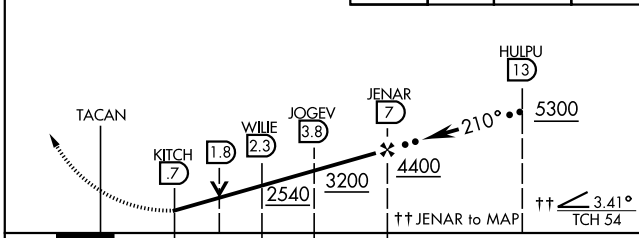
Minimum NAVAID reception at ARCOE 15,000 MSL.

† CAUTION: Missed Approach climb rate to 15,000

| | | | | | | |
|------------|-----|-----|------|------|------|------|
| Knots | 60 | 120 | 180 | 240 | 300 | 360 |
| V/Vt (fpm) | 383 | 766 | 1149 | 1532 | 1915 | 2298 |

Controlling Obstacle 6959'
EMERG. SAFE ALT 100 NM 14,000

| | | | | | | | |
|--|------------------|---------------|----------|----------------|-----------|---------------|---------------|
| VGSJ and descent angles not coincident (VGSJ angle 3.00/TCH 54). | 15,000 LSV R-210 | ROCKX LSV 2.5 | hdg 020° | ARCOE R-358 30 | ELEV 1869 | TDZE 21L 1865 | TDZE 21R 1869 |
|--|------------------|---------------|----------|----------------|-----------|---------------|---------------|



| | | | |
|--------------|-------------------------------|------------------------|-------------------------|
| CATEGORY | C | D | E |
| S-21L * | 2460-1 1/4 | 595 (600-1 1/4) | |
| SIDESTEP 21R | 2460-1 | 591 (600-1) | |
| CIRCLING ** | 2620-2 1/4 751 (800-2 1/4) | 2840-3 971 (1000-3) | 3040-3 1171 (1200-3) |

HIRL all Rwy

HI-TACAN Y RWY 21L

SW-4, 05 DEC 2019 to 02 JAN 2020

SW-4, 05 DEC 2019 to 02 JAN 2020



INDIAN SPRINGS, NEVADA

| | | |
|----------------------|------------------|-------------------|
| TACAN INS Chan 87 | APCH CRS 065° | Rwy Idg 9002 |
| | | TDZE 3133 |
| | | Arpt Elev 3113 |

INDIAN SPRINGS AF AUX (KINS)

▼ * MISSED APPROACH: Straight ahead to INS TACAN, intercept INS R-outbound, cross 17 DME at or above 9500, then direkt KSV TACAN 114

NELLIS CON

CREECH AFB TOWER
118.30 60.60

GND CON

NOT FOR CIVIL USE

FOR USE UNDER BASIC VFR
WEATHER MINIMUMS ONLY

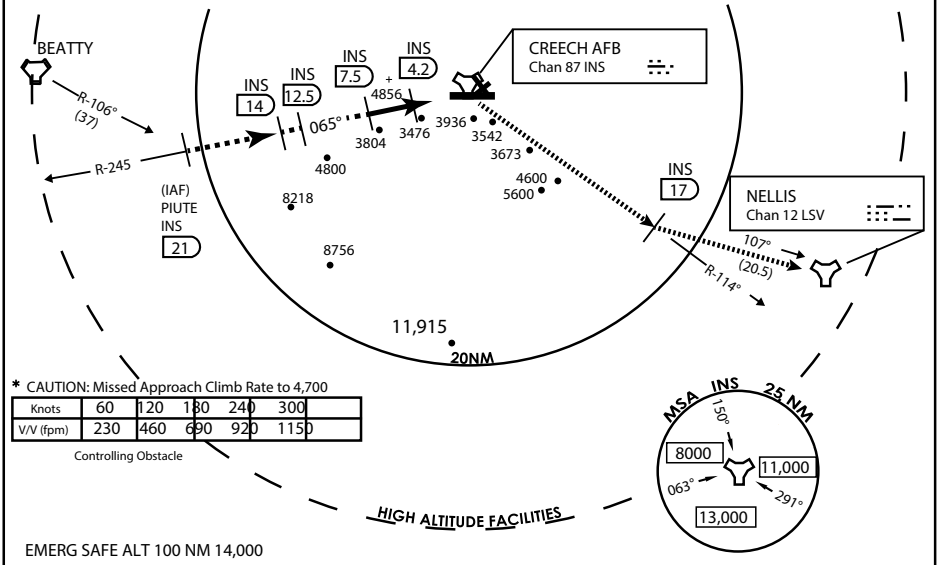
PILOT IS RESPONSIBLE FOR TERRAIN/OBSTACLE
AVOIDANCE AND
APPROPRIATE VFR CLOUD
CLEARANCE FOR ALL

CAUTION: Descent gradients are greater than allowed under standard TERPS criteria and inbound course does not meet straight-in criteria

CAUTION: Final approach course crosses Runway centerline at MIDFIELD. Maneuvering left of course required prior to landing. Do not Maneuver farther north than the INS R- 258

Modified by vJaBoG 66 for use with DCS
NOT FOR REAL LIFE NAVIGATION

Modified by vJaBoG 66 for use with DCS
NOT FOR REAL LIFE NAVIGATION



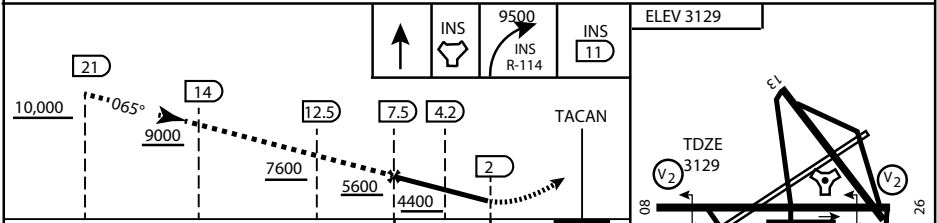
* CAUTION: Missed Approach Climb Rate to 4,700

| | | | | | |
|-----------|-----|-----|-----|-----|------|
| Knots | 60 | 120 | 180 | 240 | 300 |
| V/V (fpm) | 230 | 460 | 690 | 920 | 1150 |

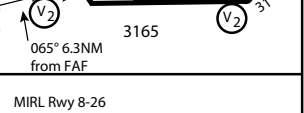
Controlling Obstacle

HIGH ALTITUDE FACILITIES

EMERG SAFE ALT 100 NM 14,000



| | | | | | |
|----------|----------------|-----------------|-------------------------------|-----------------------|-------------------------------|
| CATEGORY | A | B | C | D | E |
| S-8 | 3760-1 1/2 | 627 (700-1 1/2) | 3760-1 3/4 627 (700-1 3/4) | 3760-2 627 (700-2) | 3760-2 1/4 627 (700-2 1/4) |
| CIRCLING | NOT AUTHORIZED | | | | |



CITY OF INDIAN, NEVADA

INDIAN SPRINGS AF AUX (KINS)

(FOR DAY VFR USE ONLY)



AIRPORT DIAGRAM

476 VFG

CREECH AFB (KINS)
INDIAN SPRINGS, NEVADA

ATIS
 122.5
 CREECH TOWER
 118.4 360.7 38.65
 GND CON
 118.3 275.8
 CLNC DEL

115°42'W

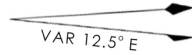
FIELD
 ELEV
 3127

80

972 X 150

HOT CARGO PAD

BAK-12


 VAR 12.5° E

WEST EOR

115°41'W

476 VFG JAN 2019

476 VFG JAN 2019

CONTROL TOWER
 BASE OPS

RPA LOLA WEST

RPA LOLA EAST

LOLA / HUNG ORDNANCE

199 X 100
 ELEV 3127
 RUNWAY 31/13
 MQ/RQ-1 ONLY

9002 X 150

258.5°

860 X 100

313.8°

4064 X 100

115°40'W

BAK-12

ELEV 3127

EAST EOR

1030 X 150

26

AIRPORT DIAGRAM

INDIAN SPRINGS, NEVADA
CREECH AFB (KINS)