

MISSION DATA CARD

OPORD		Callsign		Mission		Date/Time		
3526/2025		Tiger 1		Training		132000JAN25		
Task	SAM Training					Freq		
AO						261.15		
Departure				Recovery				
FYTTR THREE				TACAN RWY 21L				
#	Callsign		Pilot		IFF	TCN	LSR	NET
-1	Tiger 1-1		Prinz		1011	1Y	1551	01/01
-2	Tiger 1-2		Cloud		1012	64Y	1552	01/02

LOADOUT

A/A	2xA9X, A120C				GUN	100% HEI-T	
A/G	2xA88C, 2x2x ADM-141A - BRU-42				CHF	90	
POD	TGP				FLR	30	
TKS	FPU-8A				FUEL	100%	

TOLD

	Takeoff	Target	Joker	Bingo	Land
FUEL	13047			3500	2000

AIRBASES

	Name	TCN	ATIS	GND	TWR	RWY	Elev	ILS
Dep	Nellis AFB	12X	270.1	275.8	327.0	21L	1850	109.1
Arr	Nellis AFB	12X	270.1	275.8	327.0	21L	1850	109.1
Div	Creech AFB	87X	290.45	275.8	360.6			

FLIGHTPLAN

#	Name	Navaid/Coords/DME	ALT	TOT
1	FYTTR	N36 21 26.400 W115 41 28.200	15000	
2	Pahute Mesa Airstrip	N37 06 09.190 W116 18 44.953	15000	
3	IP Cover	N37 09 24.466 W115 52 51.640	5000	
4	Target Area	N37 14 13.708 W115 48 07.106	4482	
5	Creech AFB	N36 35 09.627 W115 40 30.875	15000	
6	STRYK	N36 25 37.200 W115 30 42	10000	
7	GASS PEAK	N36 24 08.400 W115 10 39.600	8800	
8	APEX	N36 21 34.800 W114 54 20.400	4500	
9	Nellis AFB	N36 13 32 W115 02 37	1843	

COMMS

Radio	Usage
1	11(Atis), 3(NG), 4(NT), 16(BJ), 18(SH), 16(BJ), 4(NT), 3(NG)
2	Inhouse 261.15
3	MIDS A: 22 / B: 44

SUPPORT**Tanker**

Callsign	TCN	Freq	ALT	TAS
ARCO 1	113Y	319.8	FL250	450
	Pos	AR-625: MVA 168/77 (N3717 W11802)		
SHELL 2	115Y	360.8	FL250	430
	Pos	AR-635: MLF 260/127 (N3831 W11542)		

AWACS

Callsign	Freq	ALT	Pos
MAGIC	377.8	FL270	N3749 W11417 - N3713 W11446

OTHER FLIGHTS

Callsign	Mission	Airframe	Freq	TCN	Grpld	Laser
Raptor 1	Training	4x F-16C	134.0	1/64		162X
AO	EAST NTTR	Task	Tac Formation			
Raptor 2	Training	4x F-16C	134.5	1/64		162X
AO	EAST NTTR	Task	Tac Formation			
Cowboy 1	Training	2x AH-64D	133.5	1/64		170X
AO	LATNC	Task				
Edelweiss 5	Training	2x F/A-18C	264.55	12/75	1	175X
AO	SAM Training Area	Task	LCR Check Testflight, SAM, BVR, AAR			
T-Rex 3	Training	4x A-10C	132.25	1/64	25	165X
AO	Range 64	Task	Gun Employment Moving Targets			
Nazgul 6	Training	4x F-15E	262.45	1/64		156X
AO	Range 66	Task				
Panther 3	Training	2x F/A-18C	261.35	1/64		157X
AO	RANGE 63 Circle	Task				
Tiger 2	Training	3x F/A-18C	261.25	2/65	2	156X
AO		Task	SAM Training			
Monster 4	Training	2x A-10C	132.15	1/64	26	155X
AO	Range 64	Task	Gun Employment Moving Targets			
Balrog 7	Training	4x F-15E	262.45	1/64		156X
AO	Range 66	Task				

RADIO CHANNELS

#	Freq	Name
1		Flight/Squadron specific
2	289.4	Nellis Clearance Delivery
3	275.8	Nellis Ground
4	327.0	Nellis Tower
5	385.4	Nellis Approach/Departure West
6	273.55	Nellis Approach/Departure East
7	317.525	Nellis Control -- Sally
8	254.4	Nellis Control-- Lee
9	305.6	SOF Bullseye
10	343.725	EMERGENCY SINGLE FRQ
11	270.1	Nellis ATIS
12	360.625	Creech AFB Tower
13	250.1	HAVE QUICK 13
14	251.1	HAVE QUICK 14
15	252.1	HAVE QUICK 15
16	377.8	Blackjack
17	265.0	KC-135 AR-641A
18	360.8	KC-135MPRS AR-635
19	319.8	KC-135MPRS AR-625
20	300.05	KC-135 AR-231V

RAMROD

0	1	2	3	4	5	6	7	8	9
R	H	E	U	M	A	T	I	C	S

KTC 1400 C

	0	1	2	3	4	5	6	7	8	9
A	QEJS	OPI	BUK	YV	GH	NDR	WF	TX	AM	LC
B	DIRB	TLV	JCS	NO	HP	WEQ	YF	GK	XM	UA
C	JQBS	LOG	CUR	PM	DV	TAI	KY	WX	FH	NE
D	MRJK	NBF	EDG	OY	VQ	ULT	IS	XH	CP	AW
E	DCVH	EMF	BLA	RU	IN	YSK	WX	JG	PQ	OT
F	YIJF	RQL	UOV	EX	CH	TWM	SA	GD	KB	PN
G	YGXD	IWF	VUC	KP	TO	NLB	JH	QR	MA	ES
H	DUWH	EBA	TLV	XI	KF	PRN	OC	MY	SJ	GQ
I	KOYI	UWP	FQS	VH	LJ	NCT	MR	XA	GB	DE
J	QVAN	EJU	RYI	TK	CG	SWB	MP	LX	OD	FH
K	NETO	AHR	KBC	UQ	YI	LVJ	PW	FX	GS	DM
L	EDPI	JBW	QNO	YG	TV	RCS	KL	MF	UX	AH
M	GHLC	FSK	YQU	RO	VA	EIX	BW	PJ	DT	MN
N	TVWP	AFJ	QSO	KY	BL	RDM	IG	EH	XU	CN
O	KJSI	XAU	MYP	FV	HN	GTQ	WB	LD	EC	RO
P	EABD	QPY	NCJ	UK	GX	SFL	OH	VM	IW	RT
Q	YAQX	ILR	ODK	WH	UN	FVS	BE	MG	CP	JT
R	JLIP	HEC	FQV	NB	YS	DKX	AW	MU	TG	OR
S	GLHK	NVM	EXW	UJ	QC	SAP	FB	OT	IR	DY
T	VCUG	MYL	NJH	QE	FI	ARK	SD	XT	OB	WP
U	KXCL	EJN	DAU	OF	PB	HYV	GW	SR	TM	IQ
V	GVTF	JRQ	LIA	KY	XC	HSW	UB	MD	EP	NO
W	TGFD	ILC	OSW	BA	NV	MPX	UH	RQ	JE	YK
X	BQRK	TSF	AYV	NI	HX	ELU	CG	WP	OM	JD
Y	QKJR	LNA	USC	HB	XW	DEF	TM	VO	YP	IG

NAVAIDS

Id	Name	Channel	Position	Elevation
BCE	Bryce Canyon	75	N3741.35 W11218.23	9040
BIH	Bishop	33	N3722.62 W11821.99	4114
BLD	Boulder	114	N3559.75 W11451.82	3650
BTY	Beatty	94	N3648.54 W11644.86	2925
CDC	Cedar City	120	N3747.24 W11304.90	5463
DAG	Daggett	79	N3457.75 W11634.69	1760
EED	Needles	99	N3445.96 W11428.43	650
GFS	Goffs	91	N3507.87 W11510.59	4019
GRL	Groom Lake	18	N3713.91 W11548.16	4475
HEC	Hector	74	N3447.83 W11627.78	1854
ILC	Wilson Creek	110	N3815.02 W11423.65	9318
INS	Creech AFB	87	N3635.20 W11540.12	3101
LAS	McCarran Intl	116	N3604.78 W11509.59	2142
LSV	Nellis	12	N3614.68 W11501.50	1864
MLF	Milford	58	N3821.62 W11300.79	4977
MMM	Mormon Mesa	90	N3646.16 W11416.65	2120
MVA	Mina	98	N3833.92 W11801.97	7860
OAL	Coale Dale	124	N3800.20 W11746.23	4800
PGS	Peach Springs	57	N3537.48 W11332.67	4754
TPH	Tonopah Muni	119	N3801.84 W11702.01	5330
TQQ	Silverbow	77	N3748.00 W11647.00	5500
UTI	St George	23	N3705.29 W11335.53	2871



RWY 3L-21R
 PCN 46 R/C/W/T
 RWY 3R-21L
 PCN 51 R/C/W/T
 2017

PAR	RWY	CAT	MINIMA		ARP	ELEV	Scale 1:35'500 0 300 600 900 1200 1500 [m] 0 1000 2000 3000 4000 5000 [ft]
	21L	A B D E	2057 - 0.8 200 (200-0.8/1.6)	GS 3°	36° 14.060° N	1857 [ft]	
	3R	A B D E	2057 - 0.8 200 (200-0.8/1.6)	GS 3°	115° 01.058° W	566 [m]	
SRA	21R	A C D E	2257 - 1.2 350 (350-1.2/1.6)				
	3L	A C D E	2257 - 1.2 350 (350-1.2/1.6)				

RWY	TORA	TODA	ASDA	LDA	PSN	THR	ALS
21L	10051 [ft] 3063 [m]	11051 [ft] 3368 [m]	11051 [ft] 3368 [m]	10051 [ft] 3063 [m]	36°14.043' N	115°01.018' W	⊕
3R	10120 [ft] 3084 [m]	11120 [ft] 3398 [m]	11120 [ft] 3398 [m]	10120 [ft] 3084 [m]	36°13.029' N	115°02.038' W	

ATIS	NELLIS GROUND	NELLIS TOWER	NELLIS CONTROL	TACAN	ILS RWY 21L	NELLIS EAST	NELLIS WEST
270.100 MHz	275.800 121.800	327.000 132.55	317.525	LSV 12X	109.10 Mhz	384.400	385.000

FYTTTR THREE DEPARTURE IFR CHART | VALID 2014 LAS VEGAS, NEVADA

ATIS
270.100
NELLIS GROUND
275.800
NELLIS TOWER
327.000
NELLIS CONTROL
317.525
NELLIS DEP/APP EAST
384.400
BLACKJACK
377.800



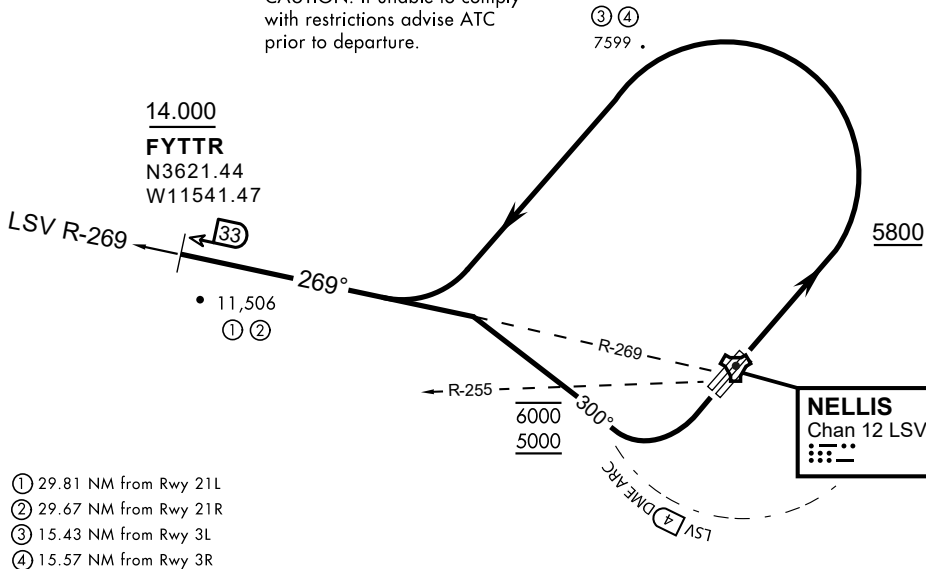
Rwy	Knots	60	120	180	240	300	360
3L (a)	V/V(fpm)	394	788	1182	1576	1970	2364
3R (a)	V/V(fpm)	392	784	1176	1568	1960	2352
21L (b)	V/V(fpm)	388	776	1164	1552	1940	2328
21R (b)	V/V(fpm)	390	780	1170	1560	1950	2340

Minimum Climb Rate

(a) to 9300

(b) to 13 500

CAUTION: If unable to comply with restrictions advise ATC prior to departure.



- ① 29.81 NM from Rwy 21L
- ② 29.67 NM from Rwy 21R
- ③ 15.43 NM from Rwy 3L
- ④ 15.57 NM from Rwy 3R



DEPARTURE ROUTE DESCRIPTION

TAKEOFF RWY 3L/R

- Fly runway heading until reaching 5,800'.
- Then climbing left turn to intercept LSV TACAN R-269 outbound.
- Cross FYTTTR at or above 14,000' or as assigned, then via assigned route.

TAKEOFF RWY 21L/21R

- Turn right to intercept LSV TACAN R-269 outbound.
- Remain within LSV 4 DME until joining LSV R-269
- Cross R-255 between 5,000' and 6,000'.
- Cross FYTTTR at or above 14,000' or as assigned, then via assigned route.

NOISE ABATEMENT PROCEDURES:

Fly according Nellis Noise Abatement instructions as published

LAS VEGAS, NEVADA

TACAN RWY 21L

TACAN LSV Chan 12	APCH CRS 207°	Rwy Idg 10,055 TDZE 1866 Arprt Elev 1870
----------------------	------------------	--

AL-227 [USAF]

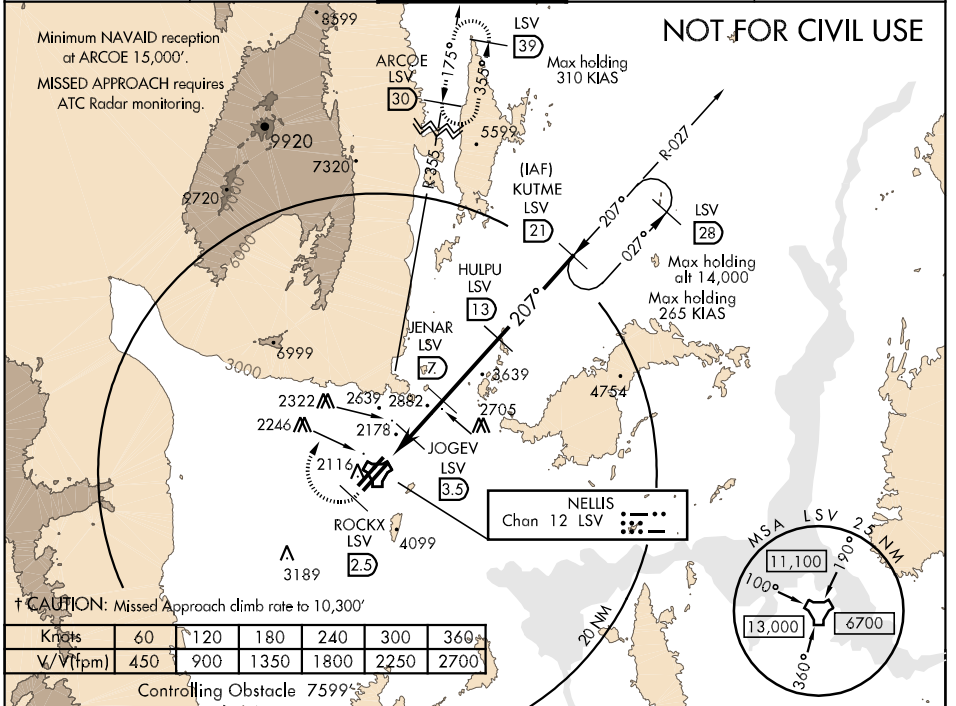
NELLIS AFB (KLSV)

▼ * When ALS inop, increase CAT AB RVR to 50, vis to 1 mile, CAT C vis to 1¼ miles, CAT D vis to 2 miles, CAT E vis to 2½ miles.
** Circling not authorized E of Rwy 3R-21L.



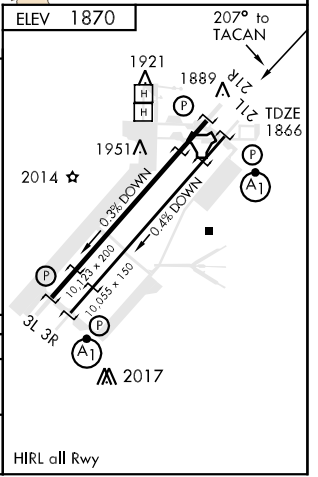
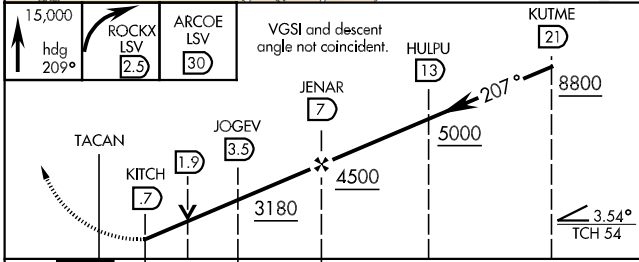
† MISSED APPROACH: Climb to 15,000, heading 209° to 2.5 DME (ROCKX), then climbing right turn heading 020° to join LSV TACAN R-355 to ARCOE and hold, continue climb in hold to 15,000.

ATIS 270.1	NELLIS APP CON 124.95 273.55	NELLIS TOWER 132.55 327.0	GND CON 121.8 275.8	CINC DEL 120.9 289.4
---------------	---------------------------------	------------------------------	------------------------	-------------------------



Knots	60	120	180	240	300	360
√ V (fpm)	450	900	1350	1800	2250	2700

Controlling Obstacle 7599'
EMERG SAFE ALT 100 NM 14,000'



CATEGORY	A	B	C	D	E
S-21L *	2480/24 614 (700-½)		2480/60 614 (700-1¼)	2480-1½ 614 (700-1½)	2480-1¾ 614 (700-1¾)
CIRCLING **	2480-1 610 (700-1)	2680-1¼ 810 (900-1¼)	2680-2¼ 810 (900-2¼)	2680-2½ 810 (900-2½)	2940-3 1070(1100-3)

LAS VEGAS, NEVADA
Amdt 3 10266

36°14'N-115°02'W

NELLIS AFB (KLSV)

TACAN RWY 21L

SW-4, 23 SEP 2010 to 21 OCT 2010

SW-4, 23 SEP 2010 to 21 OCT 2010



INDIAN SPRINGS, NEVADA

TACAN INS Chan 87	APCH CRS 065°	Rwy ldg TDZE 3133	9002 3113
		Arpt Elev 3113	

INDIAN SPRINGS AF AUX (KINS)

▼ * MISSED APPROACH: Straight ahead to INS TACAN, intercept INS R-outbound, cross 17 DME at or above 9500, then direkt KSV TACAN 114

NELLIS CON

CREECH AFB TOWER
118.30 60.60

GND CON

NOT FOR CIVIL USE

FOR USE UNDER BASIC VFR
WEATHER MINIMUMS ONLY

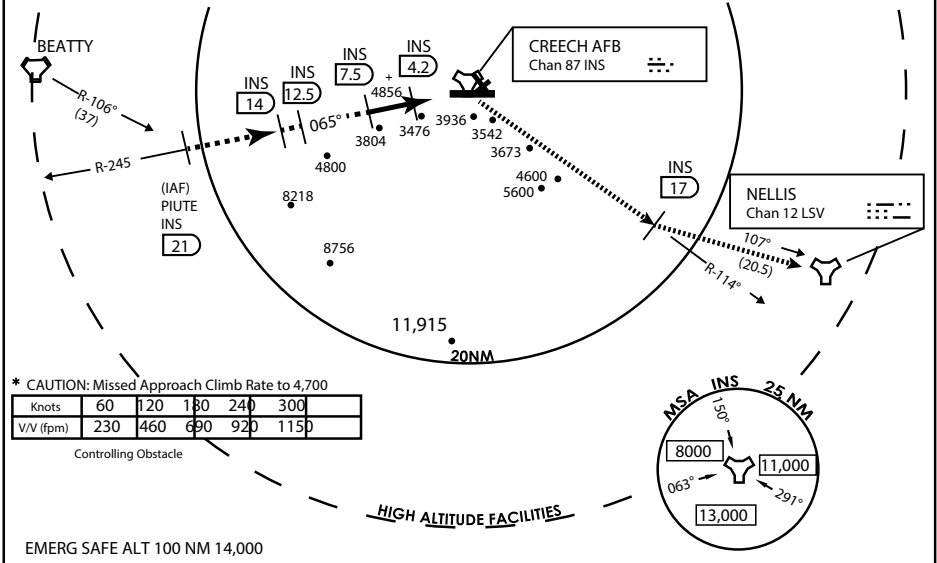
PILOT IS RESPONSIBLE FOR TERRAIN/OBSTACLE AVOIDANCE AND APPROPRIATE VFR CLOUD CLEARANCE FOR ALL

CAUTION: Descent gradients are greater than allowed under standard TERPS criteria and inbound course does not meet straight-in criteria

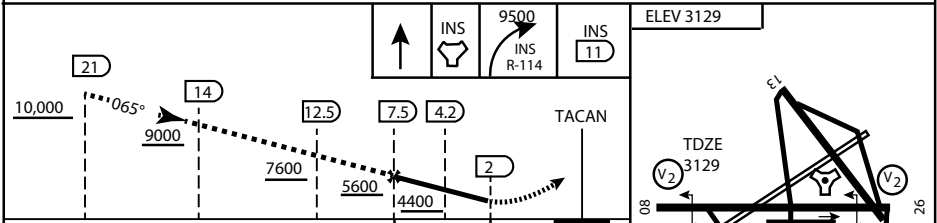
CAUTION: Final approach course crosses Runway centerline at MIDFIELD. Maneuvering left of course required prior to landing. Do not Maneuver farther north than the INS R- 258

Modified by viaBog 66 for use with DCS
NOT FOR REAL LIFE NAVIGATION

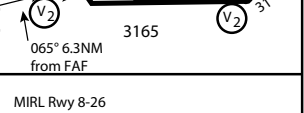
Modified by viaBog 66 for use with DCS
NOT FOR REAL LIFE NAVIGATION



EMERG SAFE ALT 100 NM 14,000



CATEGORY	A	B	C	D	E
S-8	3760-1 1/2	627 (700-1 1/2)	3760-1 3/4 627 (700-1 3/4)	3760-2 627 (700-2)	3760-2 1/4 627 (700-2 1/4)
CIRCLING	NOT AUTHORIZED				



CITY OF INDIAN, NEVADA

INDIAN SPRINGS AF AUX (KINS)

(FOR DAY VFR USE ONLY)



AIRPORT DIAGRAM

476 VFG

CREECH AFB (KINS)
INDIAN SPRINGS, NEVADA

ATIS
 122.5
 CREECH TOWER
 118.4 360.7 38.65
 GND CON
 118.3 275.8
 CLNC DEL

115°42'W

FIELD
 ELEV
 3127

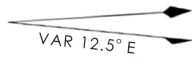
80

972 X 150

HOT CARGO PAD

78.9°

BAK-12



WEST EOR

115°41'W

CONTROL TOWER

BASE OPS

RPA LOLA WEST

RPA LOLA EAST

LOLA / HUNG ORDNANCE

199 X 100
 ELEV 3127
 RUNWAY 31/13
 MQ/RQ-1 ONLY

9002 X 150

258.5°

860 X 100

313.8°

4064 X 100

115°40'W

BAK-12

ELEV 3127

EAST EOR

1030 X 150

26

476 VFG JAN 2019

476 VFG JAN 2019

AIRPORT DIAGRAM

INDIAN SPRINGS, NEVADA
CREECH AFB (KINS)