

**MISSION DATA CARD**

OPORD		Callsign		Mission		Date/Time		
3525/2025		Panther 7		Training		092005JAN25		
Task	Fam Flight Rovaniemi					Freq		
AO						261.35		
Departure				Recovery				
SID RWY 03				Tacan RWY 03				
#	Callsign		Pilot		IFF	TCN	LSR	NET

**LOADOUT**

A/A		GUN	
A/G		CHF	
POD		FLR	
TKS		FUEL	

**TOLD**

	Takeoff	Target	Joker	Bingo	Land
FUEL	10803				

**AIRBASES**

	Name	TCN	ATIS	GND	TWR	RWY	Elev	ILS
Dep	Rovaniemi	14X	282.8	282.5	250.55	21	643	111.7
Arr	Rovaniemi	14X	282.8	282.5	250.55	21	643	111.7

**SUPPORT****Tanker**

Callsign	TCN	Freq	ALT	TAS
TEXACO 1	71Y	265.0		
	Pos			
ARCO 1	22Y	319.8		
	Pos			
SHELL 1	41Y	360.8		
	Pos			

## RADIO CHANNELS

#	Freq	Name
1		Flight/Squadron specific
2	282.8	Rovaniemi ATIS
3	282.5	Rovaniemi Ground
4	250.55	Rovaniemi Tower
5	320.7	Bodo ATIS
6	250.75	Bodo Tower
7	235.45	Kallax ATIS
8	250.3	Kallax Tower
9	265.0	Texaco-1   KC-135   Medium / Slow   71Y
10	319.8	Arco-1   KC-135   High / Fast   22Y
11	360.8	Shell-1   KC-135 MPRS   High / Fast   41Y
12	304.0	CVN-71 Rough Rider (RRR)   71X
13	303.0	LHA-1 Tarawa (TWA)   79X
14	247.8	S-3B Mauler-1 (MAU)  64Y
15	347.8	Loki (E-2D)
16	348.7	Heimdall (E-3A)
17	242.17	ESR02 - CAS Range Operator
18	34.7	ESR02 - JTAC Odin
19	270.5	Blue
20	270.75	Red

**RAMROD**

0	1	2	3	4	5	6	7	8	9
H	Y	S	T	E	R	I	C	A	L

**KTC 1400 C**

	0	1	2	3	4	5	6	7	8	9
A	XJBD	PVH	YMG	AC	QL	NUS	ER	WI	TF	KO
B	RAVN	XGC	DLQ	MW	FU	POS	KE	JB	HT	YI
C	GEYH	OAP	FDU	TK	SL	BQM	RJ	IN	CX	WV
D	CWBV	IKP	HJL	TR	DX	FEU	YO	SG	NM	AQ
E	OPJM	FEL	VQK	NG	UR	DAX	YB	ST	HI	WC
F	OEXV	TDS	QLJ	IN	KY	PRW	GC	MU	BH	AF
G	EBOY	TVJ	AHD	CL	WS	RGK	IU	PF	QM	NX
H	IOLP	TMH	FNR	QJ	UK	YXS	CG	BW	ED	AV
I	DOVK	RXC	TWP	UB	AH	QLS	JN	IF	ME	YG
J	LUBS	KRF	OGH	XI	QJ	NVY	ME	PD	TC	WA
K	IKNG	AJU	BXY	QW	DE	OVF	MH	SR	LC	TP
L	KTDH	JCQ	IXV	FS	GN	YME	WB	RO	UP	LA
M	MSGV	OUA	PBJ	YT	KW	RED	XC	IH	FN	QL
N	ILFA	JTC	PMS	UE	XR	HWQ	BD	OY	NG	KV
O	EVNG	TIM	KXU	AO	WD	BLP	SF	CJ	HY	QR
P	IROT	LAV	HSY	WX	BP	KNM	UD	JQ	FG	EC
Q	VNUI	SKL	QFT	WC	OB	ARJ	DX	PH	EG	MY
R	VHEM	DPW	YIB	FN	OC	JUA	XL	SK	RT	QG
S	YCMO	VHP	DLT	WB	RK	JFE	GA	QS	NX	UI
T	OWIE	CXR	UAY	JD	LN	VQK	PF	TM	HB	SG
U	DIUG	REJ	AXC	HS	WM	OFP	NQ	BY	VL	TK
V	ENUT	QDV	LKY	SJ	CP	ORA	FH	MG	WI	BX
W	HMUJ	POC	TWF	DY	GI	NRS	AB	XE	LV	QK
X	TBXU	RSN	EAF	GY	DC	QJW	IK	HO	LP	MV
Y	LQMW	NJC	PYA	TI	OD	VBU	RE	FH	XG	KS

**NAVAIDS**

Id	Name	Channel	Position	Elevation
BOO	Bodo	45	N67 15.838 E014 20.046	43
BNK	Banak	47	N70 03.937 E024 58.181	17
OYA	Andoya	28	N69 17.175 E016 08.658	19

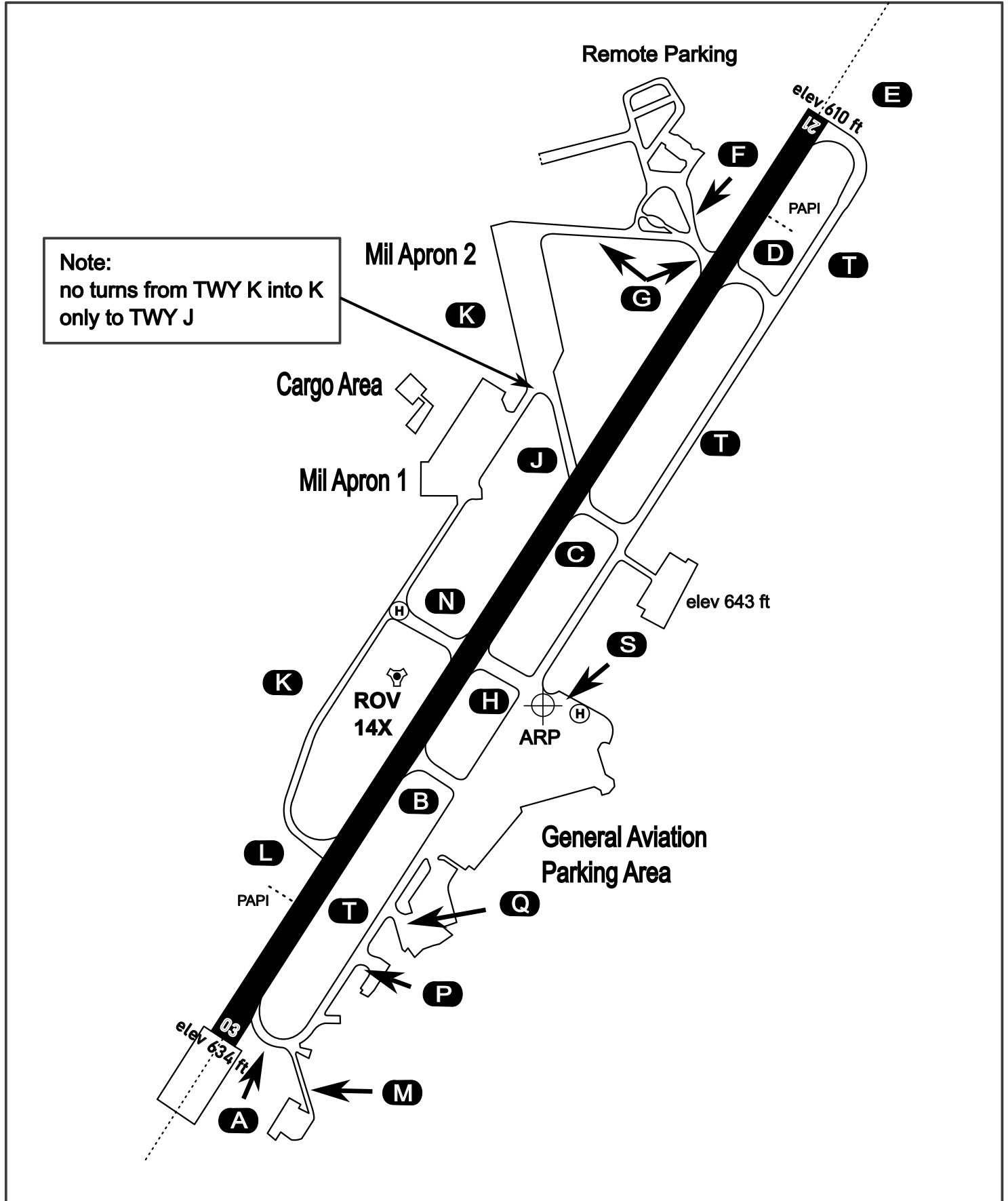
# AERODROME CHART

Rovaniemi Aerodrome

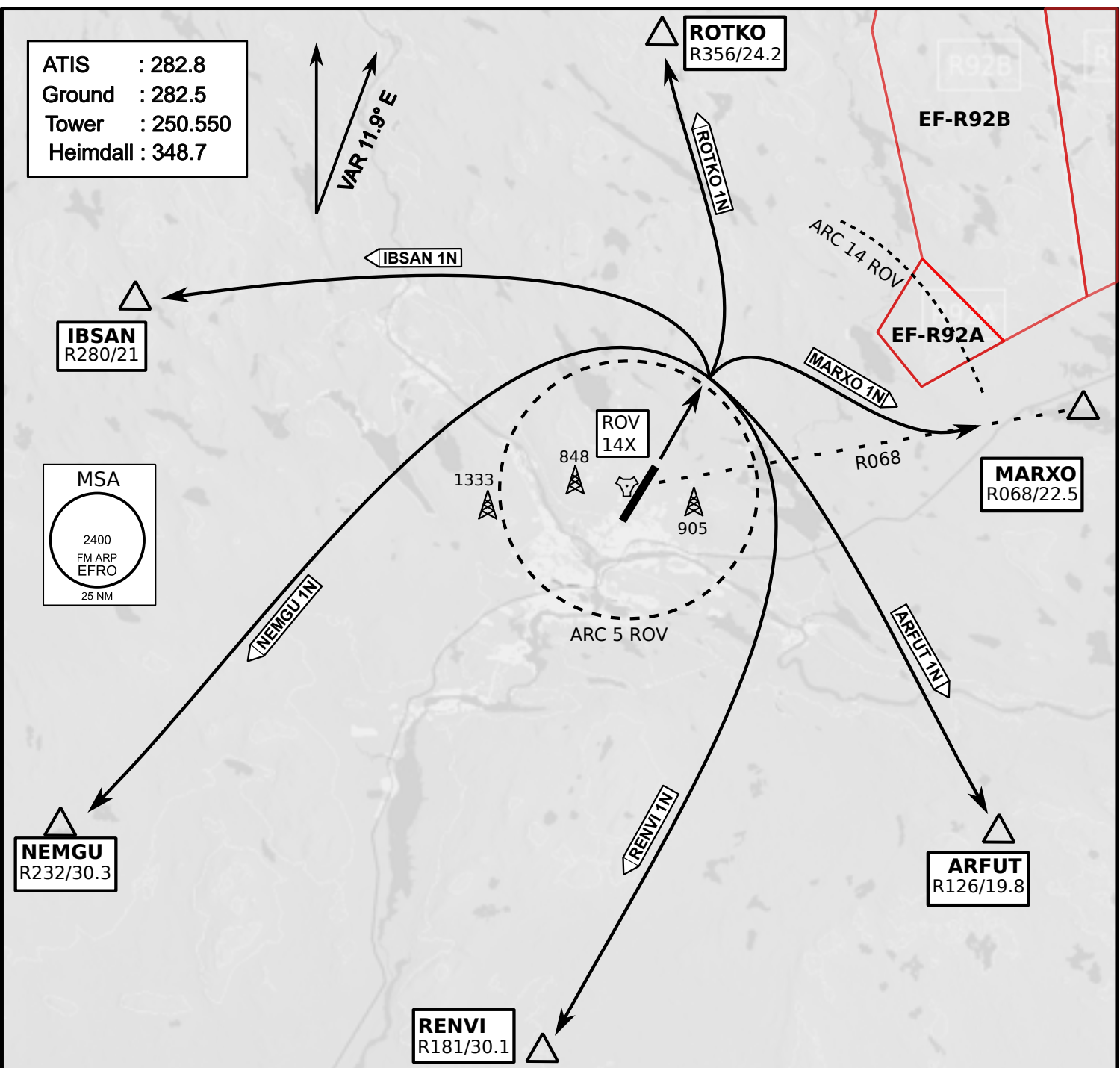
ARP N66° 33' 42" E025° 49' 51"

elev 643 ft

## ROVANIEMI, FINLAND



ATIS	Ground	Tower	Radar
282.800	282.500	250.550	348.700



- Climb on Rwy heading to min A2000ft
- when passing A2000ft OR 5 DME ROV (whichever is later) turn to exit point
- Stay outside ARC 5 ROV
- if EF-R92B is active :  
intercept R068 ROV inside 14 DME ROV to MARXO
- AB usage only if necessary for flight safety

